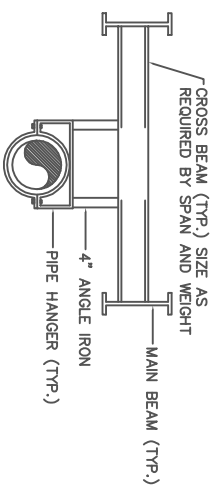
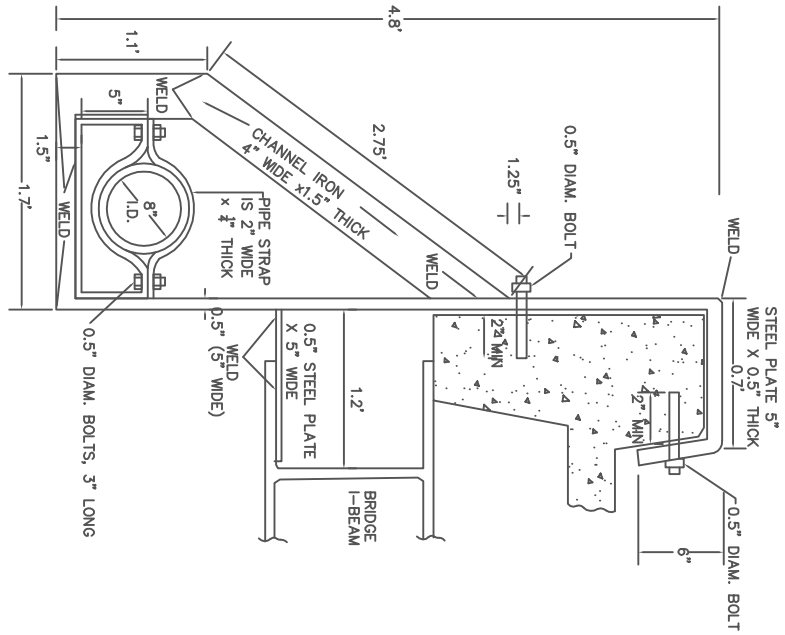


DIMENSION IN INCHES FOR PIPE HANGERS			
PIPE SIZE	A	B	C (RADIUS)
8	6.53	2.00	4.53
12	8.60	2.00	6.60
16	10.70	2.00	6.70

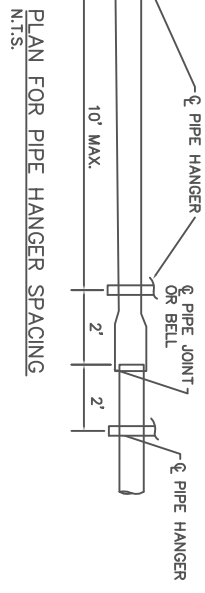


**TYPICAL WATER MAIN SUPPORT DETAILS**  
N.T.S.

- NOTES:**
1. PRIMER SHALL BE NO. 1-8 ORANGE PRIMER AND CONFORM TO GEORGIA D.O.T. ARTICLE 670.02 PRIMER SHALL BE APPLIED TO A MINIMUM THICKNESS OF 4 MILS.
  2. PAINT SHALL BE NO. 3-A GREEN, BRUSHING, ROLLER, AIRLESS TYPE AND CONFORM TO GEORGIA D.O.T. ARTICLE 670.02. PAINT SHALL BE APPLIED TO A MINIMUM THICKNESS OF 10 MILS.
  3. TWO BOTTOM ASSEMBLIES USED TOGETHER MAY BE REQUIRED FOR SOME INSTALLATIONS.
  4. PROVIDE TWO SUPPORTS PER JOINT, TWO FEET FROM JOINT.
  5. DESIGN SUPPORTS DETAILS FOR WATER MAIN LARGER THAN 16".
  6. STEEL SHALL BE A-36.
  7. WELDING SHALL BE E-70XX.



**PIPE HANGER SECTION**  
(FOR 8" DIAMETER PIPE)  
N.T.S.



**PLAN FOR PIPE HANGER SPACING**  
N.T.S.

- NOTES:**
1. PROVIDE TWO SUPPORTS PER JOINT, TWO FEET FROM JOINT
  2. ENGINEER SHALL DESIGN SUPPORT DETAILS FOR WATER MAINS LARGER THAN 8" IN DIAMETER
  3. STEEL SHALL BE A-36
  4. WELDING SHALL BE E-70XX
  5. ALTERNATE DESIGN MAY BE SUBMITTED BY THE ENGINEER FOR APPROVAL BY FULTON COUNTY PUBLIC WORKS DEPARTMENT
  6. RESTRAINED JOINTS EQUAL TO GRIP TIGHT OR APPROVED EQUAL SHALL BE USED TWO JOINTS EITHER SIDE OF THE SUSPENDED PIPE

**FULTON COUNTY STANDARD DETAIL 119**  
**TYPICAL PIPE HANGER AND SUPPORT DETAILS**

DATE	REVISIONS	DATE	REVISIONS
8/08	NRR		

DGS /DRN /CHKD: CMS  
APPROVED: REW  
DATE: 12-2-05



FULTON COUNTY PUBLIC WORKS  
141 PRYOR ST. ATLANTA, GA. 30303  
404-612-7400 FAX: 404-224-0498