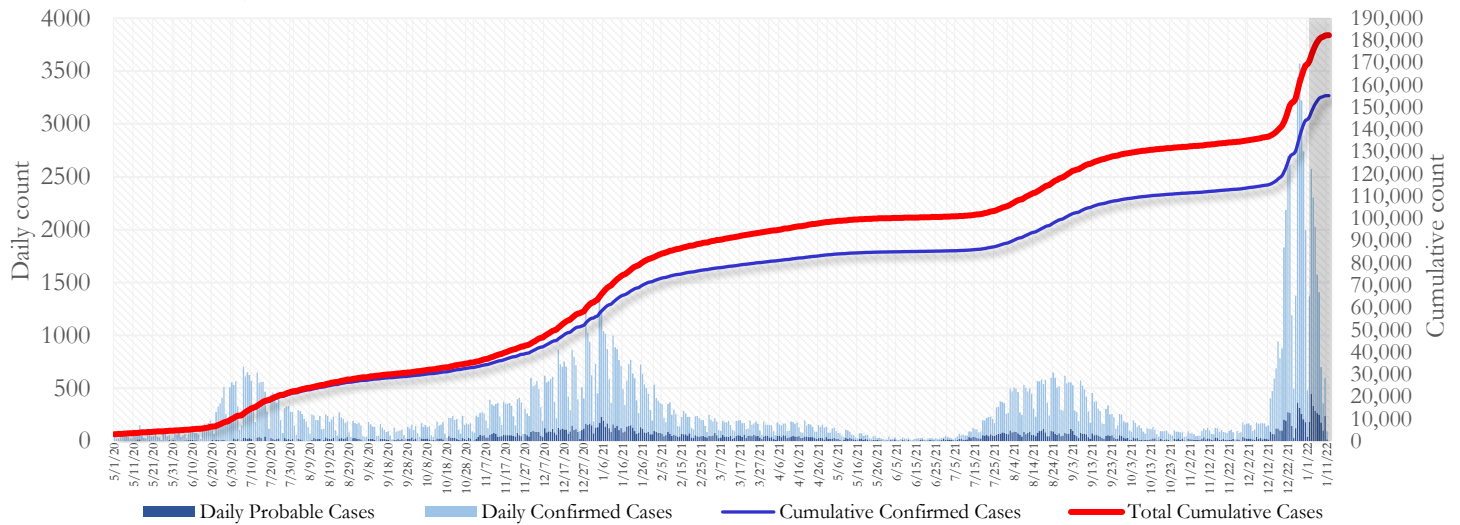


SUMMARY

- As of January 12, 2022, Fulton County has recorded **157,278 confirmed cases** and **27,160 probable cases** of COVID-19.
- Figure 1 shows both confirmed and probable case counts but the ensuing tables and figures use data from **confirmed cases only**.
- As of January 12, 2022, Fulton County has recorded **1,745 confirmed COVID-19 deaths**. 88 deaths are currently under review by GA DPH to confirm cause of death.
- By city, new confirmed COVID-19 case rates range from 343.1 per 100,000 persons (Mountain Park) to 3574.4 per 100,000 persons (Union City). [**Fulton County Diagnoses Rates (per 100,000 persons): Cumulative –14774.2; Incidence – 2688.8**]. See map showing incident case rate by ZIP code on Pg.7.
- Of all PCR testing done in Fulton County between December 20, 2021 and January 2, 2022, the **percent positivity rate was 33.2%**.

Fig 1. Daily and Cumulative Confirmed and Probable COVID-19 cases in Fulton County, GA



Counts shown reflect the number of cases as of 9:00 am on 1/12/22 using the date of first positive sample collection. Where date of sample collection was not available or missing, the date of report creation in GA SendSS was used instead. The Georgia Department of Public Health defines a confirmed cases as someone with a positive molecular test, also known as PCR. A probable case is defined as a positive antigen test, though probable cases are still considered positive cases and individuals who tested positive through an antigen test should follow all DPH isolation and quarantine guidance. **Note:** Delays in data reporting may cause changes in data counts, particularly in the shaded portion. Data throughout this report are preliminary and subject to ongoing data cleaning processes, and thus are subject to change.

THE FOLLOWING ANALYSES (PAGES 1-19) ARE USING DATA ON CONFIRMED CASES ONLY.

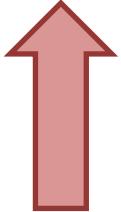
DISTRIBUTION OF COVID-19 CASES BY REGION

New cases: 38% of the new COVID-19 cases in the past 2 weeks occurred in Atlanta while 32% and 25% occurred in the Northern and Southern regions of the county respectively.

Fulton Region	% Cumulative count	% New cases*
Atlanta	42.5%	38.1%
North ¹	31.7%	31.7%
South ²	22.5%	25.3%
Unincorporated/Unknown	3.3%	4.8%

¹Includes all Fulton County cities north of Atlanta (Alpharetta, Johns Creek, Milton, Mountain Park, Roswell, Sandy Springs.) ²Includes all cities south of Atlanta (Chattahoochee Hills, College Park, East Point, Fairburn, Hapeville, Palmetto, South Fulton, and Union City) ***New cases:** Cases diagnosed in the past 2 weeks only (between 12/23/21 – 1/5/22).

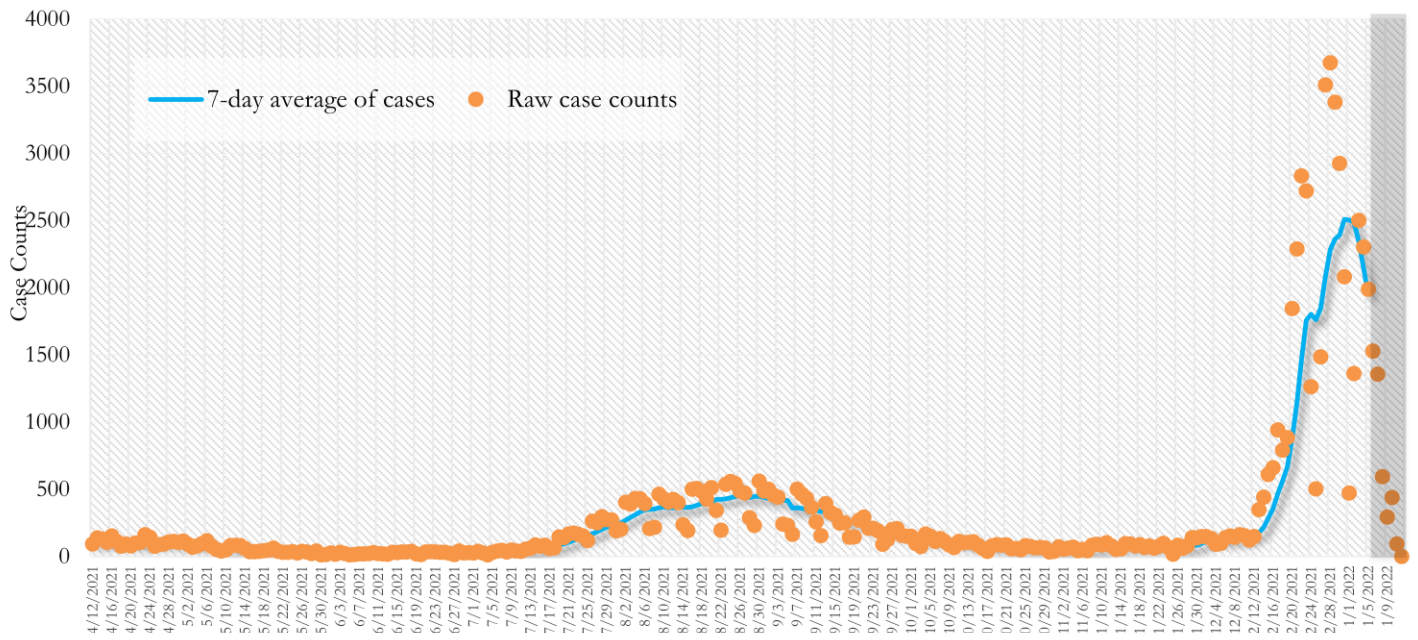
In the recent two week reporting period (12/23-1/5), there were more new cases of COVID-19 in Fulton County than the previous two weeks (12/9-12/22).



**Delayed a week to account for testing results turnaround time.*

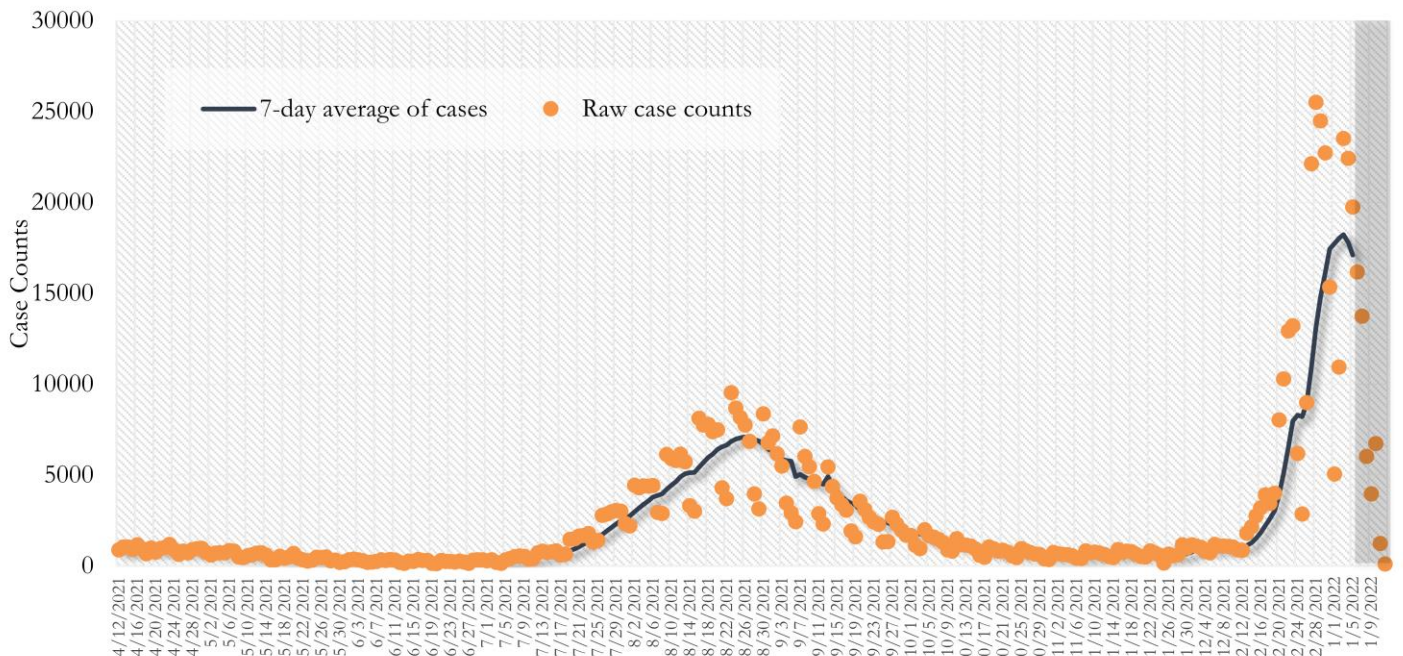
TRENDS IN COVID-19 CASES, HOSPITALIZATIONS AND DEATHS (7-DAY MOVING AVE.)

Fig. 2. New COVID-19 Cases in Fulton County Daily (Averaged over 7 days)



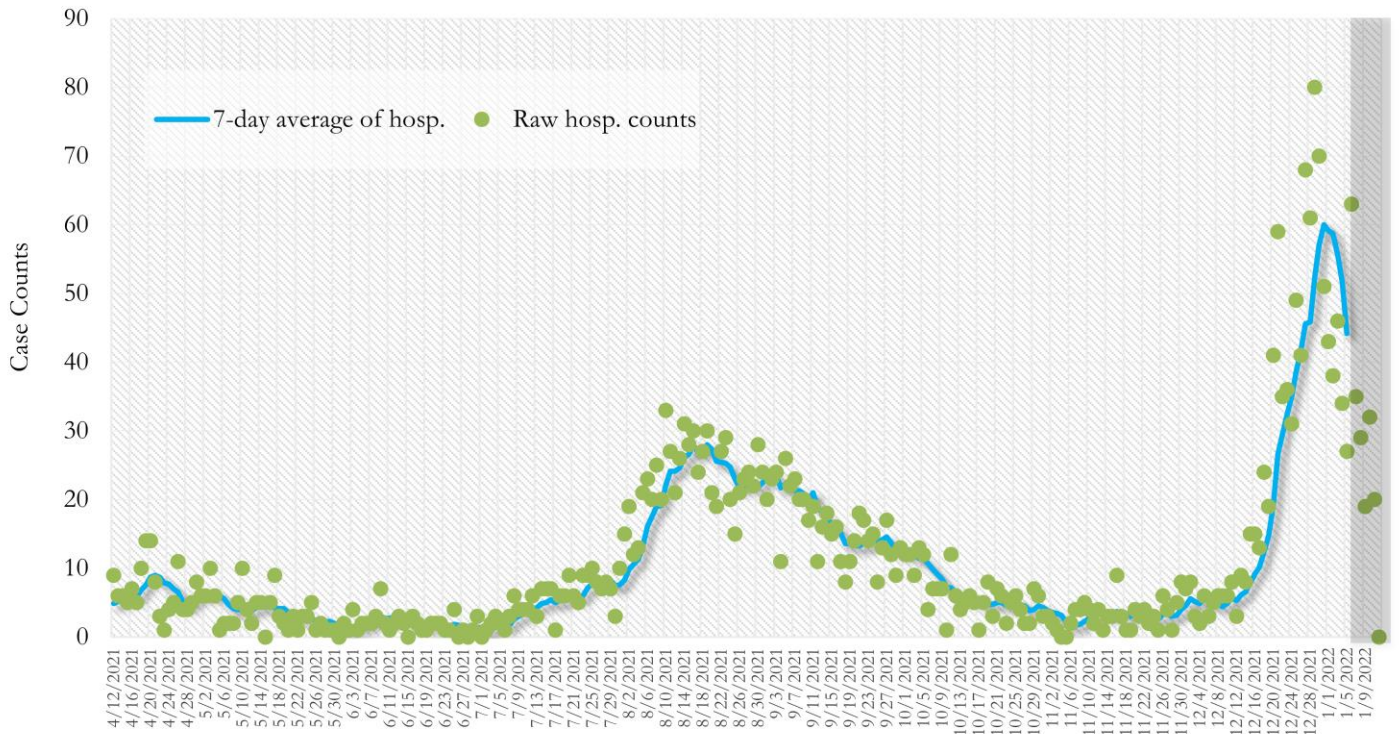
*Date of collection of first positive sample used (report creation date used where sample collection date is missing). Graph above reflects the trend in COVID-19 diagnosis. Due to the high volume of testing in recent weeks, there have been delays in reporting lab results. Thus, the trend is subject to change as more lab results get added to the state surveillance database.

Fig. 3. New COVID-19 Cases in Georgia State Daily (Averaged over 7 days)



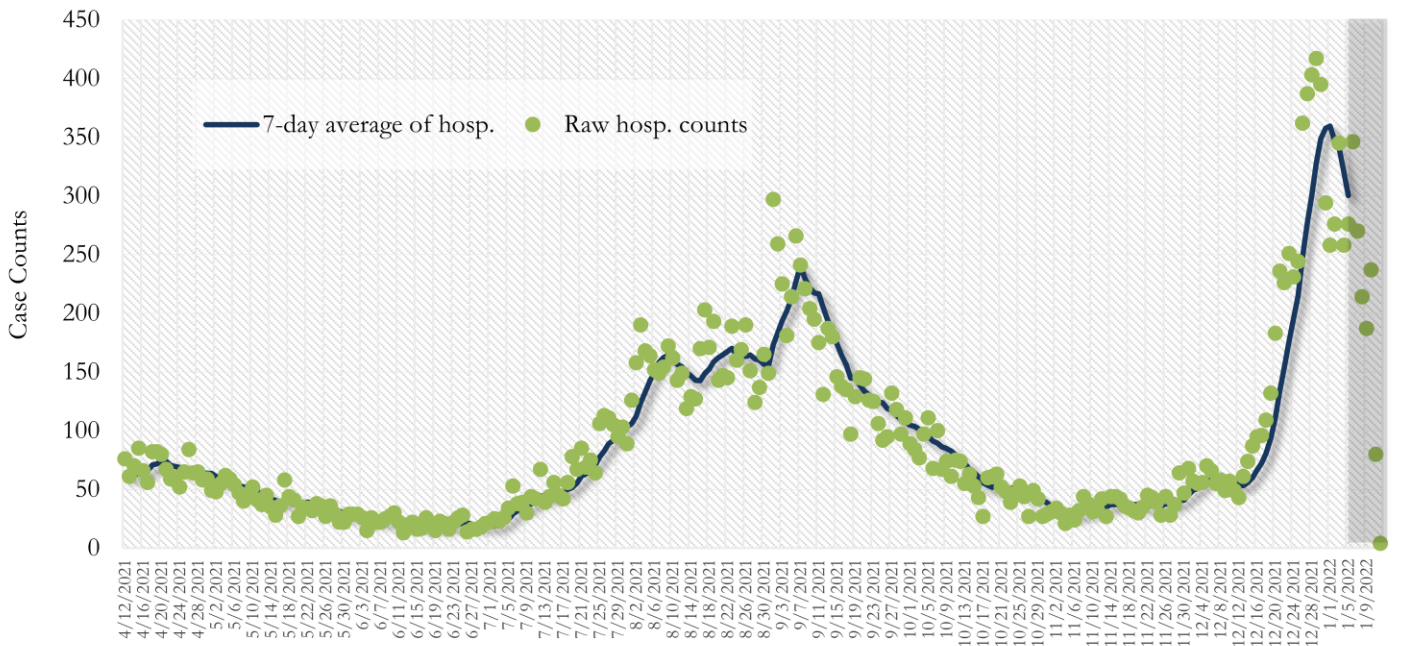
*Date of collection of first positive sample used (report creation date used where sample collection date is missing). Graph above reflects the trend in COVID-19 diagnosis. Due to the high volume of testing in recent weeks, there have been delays in reporting lab results. Thus, the trend is subject to change as more lab results get added to the state surveillance database.

Fig. 4. COVID-19 Hospitalizations in Fulton County Daily (Averaged over 7 days)



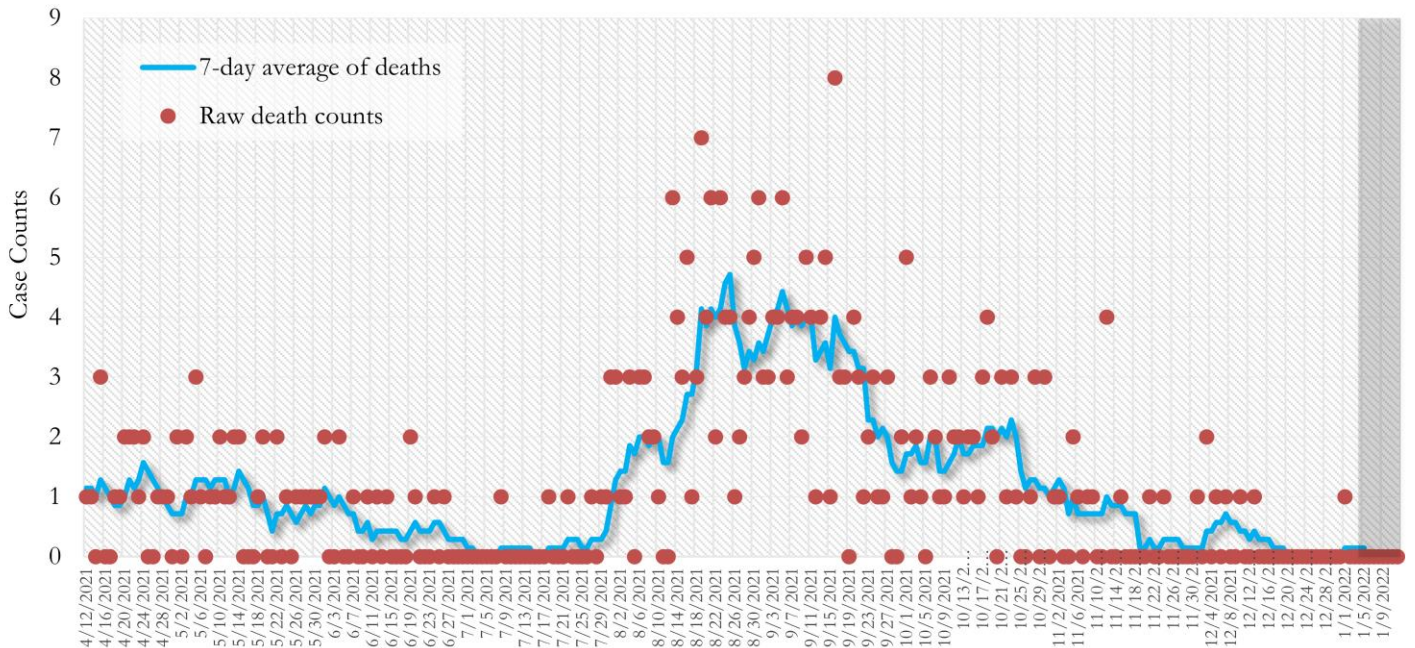
*Reported date of hospital admission used. Graph above reflects the trend in COVID-19 hospitalizations. Due to the high volume of new cases being added daily, there have been delays in reporting hospitalization data. Thus, the trend is likely to change as more hospitalization data is reported in the state surveillance database. Numbers may include those who tested positive for Covid-19 while hospitalized for a different reason.

Fig. 5. COVID-19 Hospitalizations in Georgia State Daily (Averaged over 7 days)



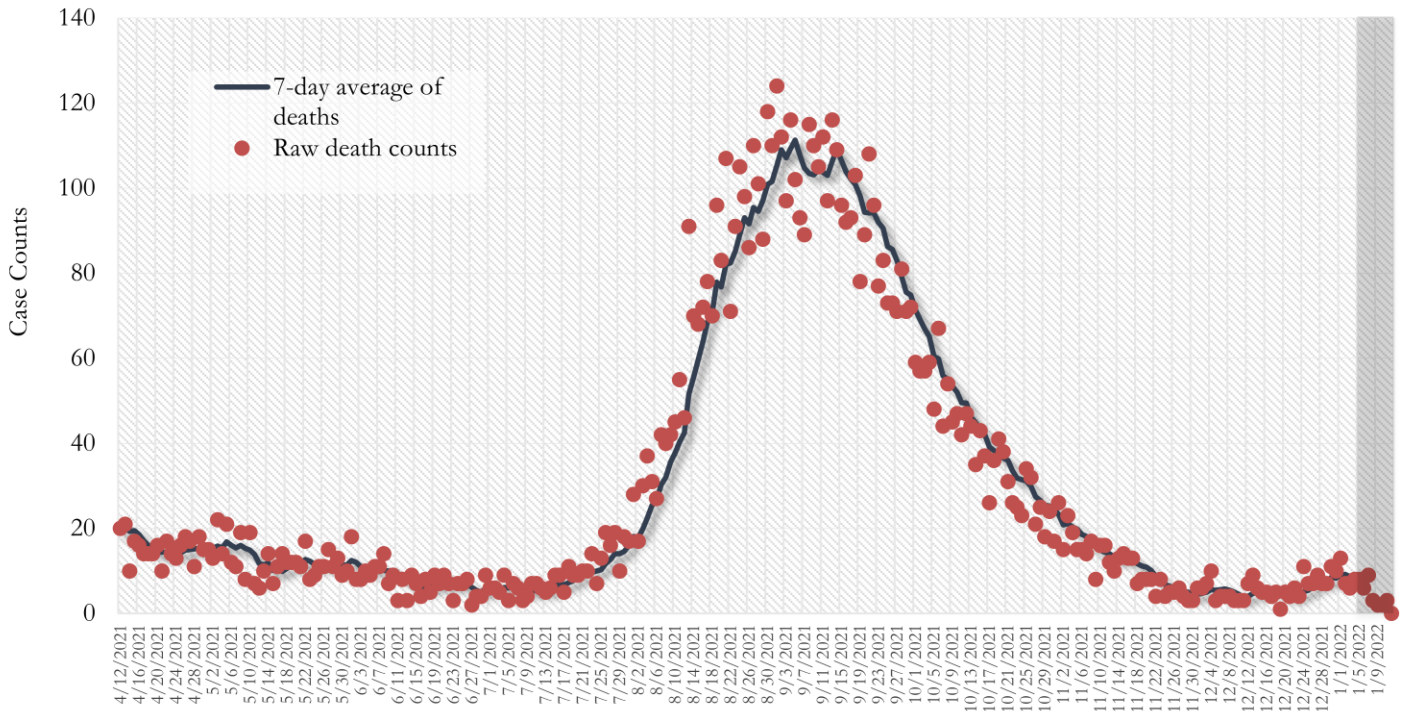
*Reported date of hospital admission used. Graph above reflects the trend in COVID-19 hospitalizations. Due to the high volume of new cases being added daily, there have been delays in reporting hospitalization data. Thus, the trend is likely to change as more hospitalization data is reported in the state surveillance database. Numbers may include those who tested positive for Covid-19 while hospitalized for a different reason.

Fig. 6. COVID-19 Deaths in Fulton County Daily (Averaged over 7 days)



*Reported date of death used. Graph above reflects the trend in deaths attributed to COVID-19. The trend is likely to change as more data on deaths among persons with COVID-19 is reported in the state surveillance database.

Fig. 7. COVID-19 Deaths in Georgia State Daily (Averaged over 7 days)



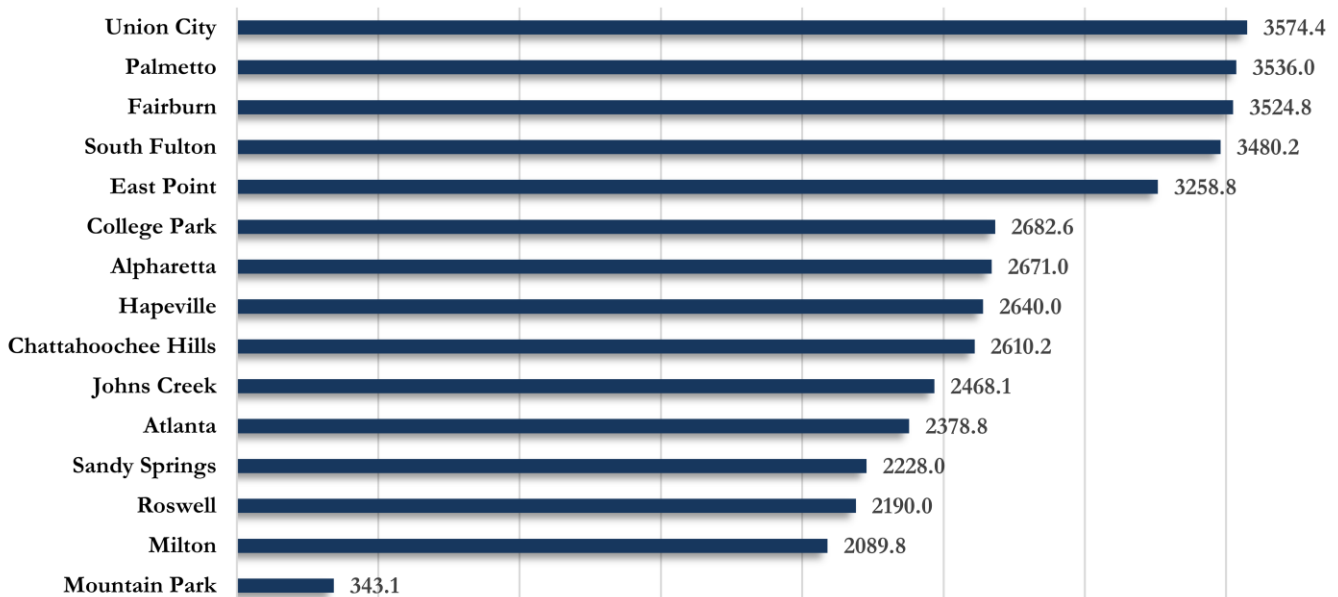
*Reported date of death used. Graph above reflects the trend in deaths attributed to COVID-19. The trend is likely to change as more data on deaths among persons with COVID-19 is reported in the state surveillance database.

COVID-19 CASE COUNTS AND RATES BY CITY

	Recent 14-day reporting period ¹	Preceding 14-day reporting period	% Change from preceding 14 days (%) ²	14-Day Incidence Rate ³
	12/23-1/5	12/9-12/22		
Alpharetta	1758	318	↑ 452.8%	2671.0
Atlanta	10910	4044	↑ 169.8%	2378.8
Chattahoochee Hills	77	18	↑ 327.8%	2610.2
College Park	346	107	↑ 223.4%	2682.6
East Point	1250	357	↑ 250.1%	3258.8
Fairburn	581	119	↑ 388.2%	3524.8
Hapeville	173	34	↑ 408.8%	2640.0
Johns Creek	2035	406	↑ 401.2%	2468.1
Milton	863	194	↑ 344.8%	2089.8
Mountain Park	<10	0	-	343.1
Palmetto	139	29	↑ 379.3%	3536.0
Roswell	2033	446	↑ 355.8%	2190.0
Sandy Springs	2408	681	↑ 253.6%	2228.0
South Fulton	3739	1103	↑ 239.0%	3480.2
Union City	959	235	↑ 308.1%	3574.4
Unknown	1386	175	-	-

¹**New cases:** Cases diagnosed in most recent 14 days (based on reported dates of positive sample collection). To allow for lag in reporting results of new diagnoses from samples collected in the most recent week, data used for incident diagnoses analyses were moved back by one week. ²**% change:** These reflect the percentage increase or decrease in new diagnoses between the 14 days preceding the most recent 7 days and the 14 days preceding that. ³**(Incidence) Rate:** Rate of new diagnoses in the last 14 day period preceding the immediate past week. Population estimates come from 2020 Census data. ****Data cleaning** (either during case interviews or address geo-coding) may lead to reassignment of few cases from one territory to another based on their corrected addresses. These may appear as “decreases” when compared to the previous counts. These do not reflect errors in the data collection or analysis process but only reflect the minor day-to-day fluctuations in case counts that arise in an evolving public health database like COVID’s. ⁴Incidence rate is skewed high due to small population. **Note: All data reported are preliminary and subject to change.**

Fig. 8. Incidence Rates by Fulton City for Recent 14-day Reporting Period



*Rates shown are per 100,000 persons | All data shown are preliminary and are subject to change as testing results get updated.

Fig. 9. Density Map – New COVID-19 Cases (December 23, 2021 – January 5, 2022) in Fulton County

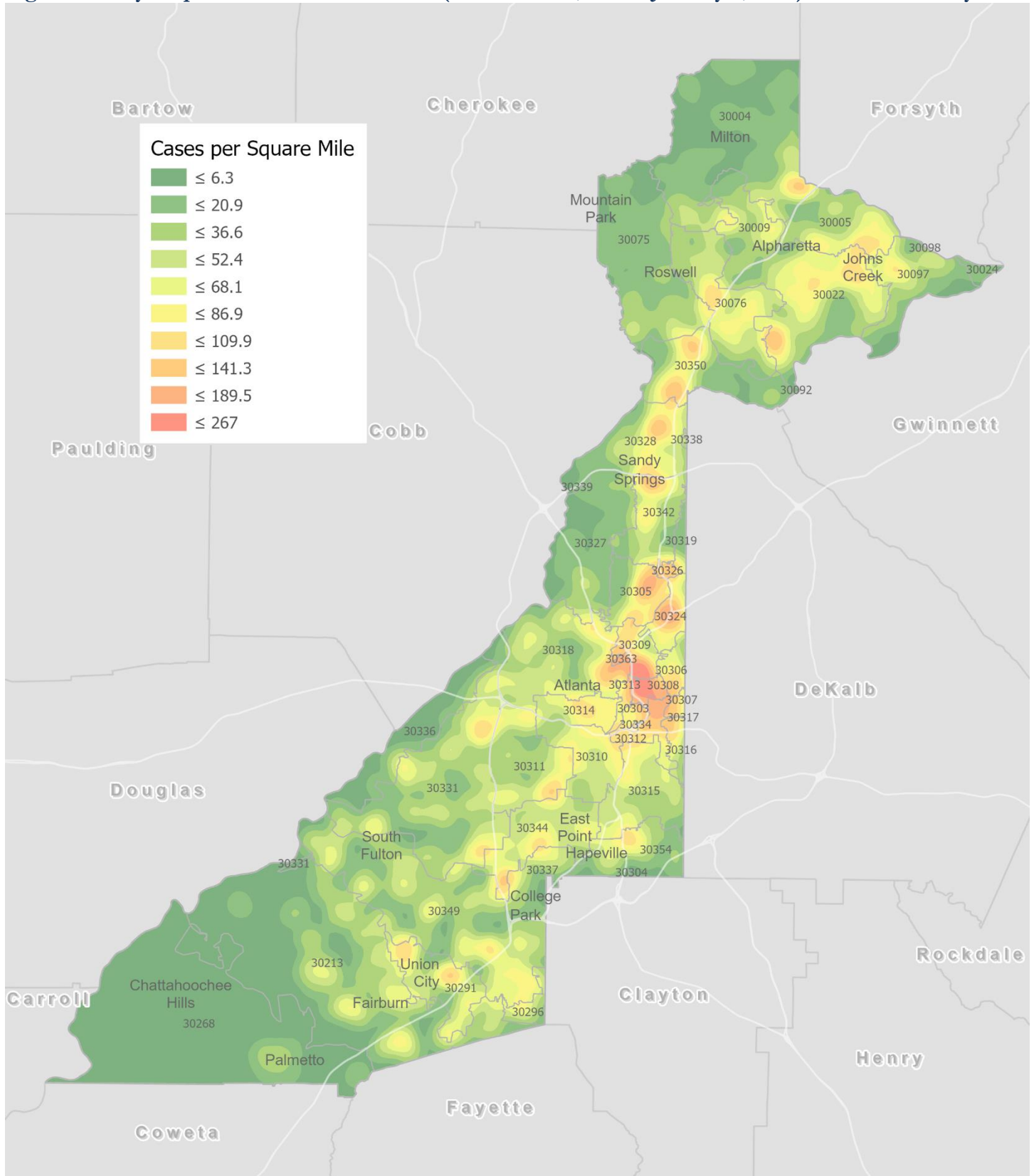
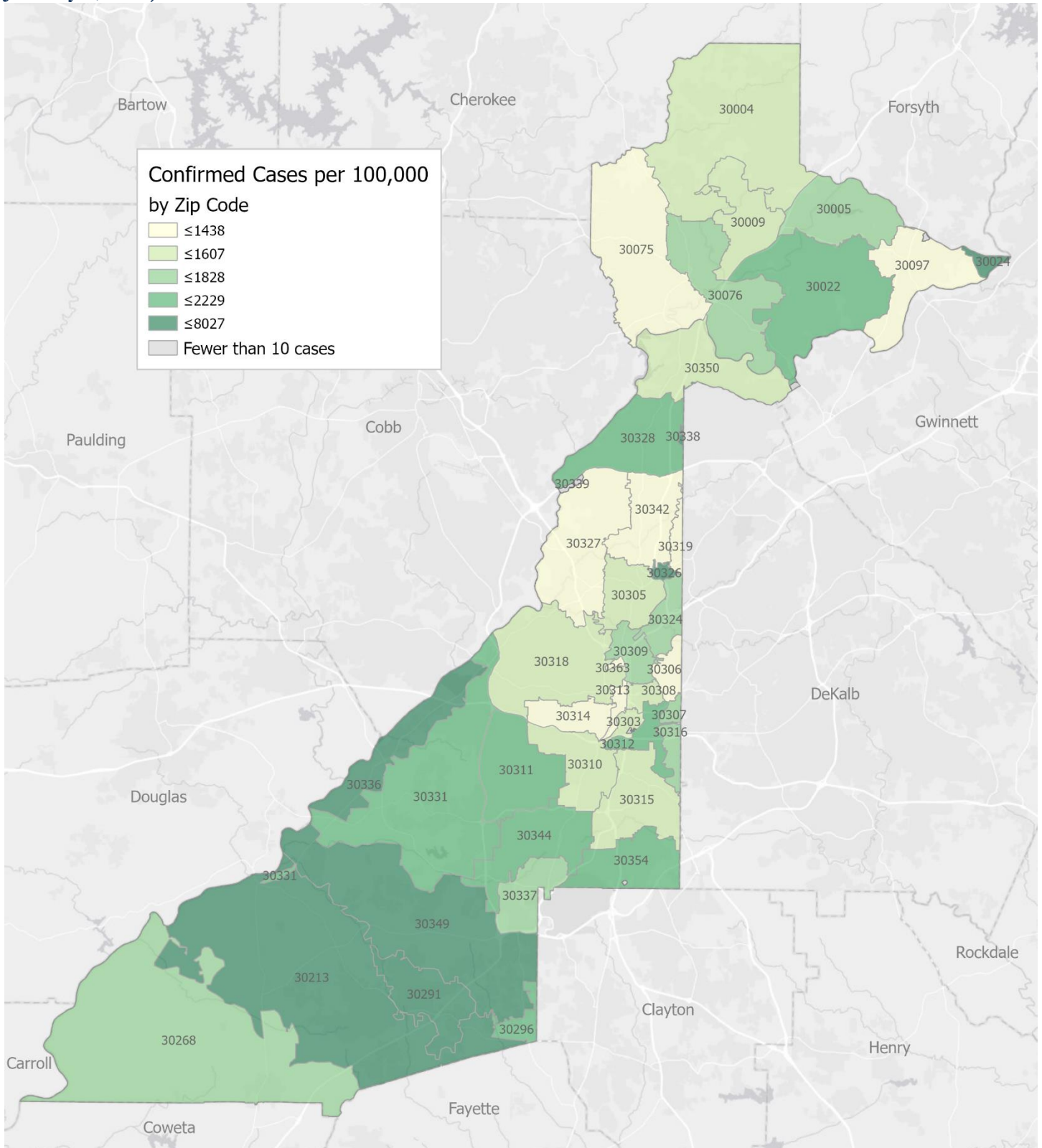


Fig. 10. New COVID-19 Diagnoses Rates (per 100,000 population) by Zip Code (December 23, 2021 – January 5, 2022)



*Rates shown are per 100,000 populations.

New COVID-19 cases: Cases diagnosed in most recent 14 days (based on reported dates of positive sample collection). To allow for lag in reporting results of positive cases from samples collected in the immediate past 7 days, data used for incident diagnoses analyses are moved back by one week. Data used excludes outbreak-related cases at long-term care facilities and map shown reflects only the new non-LTCF cases diagnosed between the dates shown in map title. See page 8 for zip code break down table.

COVID-19 NEW CASE¹ COUNTS BY ZIP CODE

Zip Code	Recent 14-day reporting period (12/23– 1/5)	Previous 14-day reporting period (12/9– 12/22)	% Change between reporting periods ²
All Fulton	28637	8260	↑ 246.7%
30004	1228	234	↑ 424.8%
30005	928	173	↑ 436.4%
30009	442	95	↑ 365.3%
30022	1958	390	↑ 402.1%
30024	36	15	↑ 140.0%
30075	749	178	↑ 320.8%
30076	1119	216	↑ 418.1%
30092	<10	0	↑ 139.5%
30097	522	86	↑ 507.0%
30098	0	0	-
30213	1586	335	↑ 373.4%
30268	236	54	↑ 337.0%
30291	884	234	↑ 277.8%
30296	127	38	↑ 234.2%
30303	140	41	↑ 241.5%
30305	651	296	↑ 119.9%
30306	326	118	↑ 176.3%
30307	170	60	↑ 183.3%
30308	491	205	↑ 139.5%
30309	755	321	↑ 135.2%
30310	661	262	↑ 152.3%
30311	928	278	↑ 233.8%
30312	650	274	↑ 137.2%
30313	183	72	↑ 154.2%
30314	476	158	↑ 201.3%
30315	832	277	↑ 200.4%
30316	318	137	↑ 132.1%
30317	13	<10	↑ 1200.0%
30318	1514	486	↑ 211.5%
30319	115	38	↑ 202.6%
30324	731	261	↑ 180.1%
30326	194	81	↑ 139.5%
30327	413	136	↑ 203.7%
30328	911	259	↑ 251.7%
30331	1976	736	↑ 168.5%
30334	<10	<10	-
30336	77	11	↑ 600.0%
30337	333	105	↑ 217.1%

Zip Code	Recent 14-day reporting period (12/23– 1/5)	Previous 14-day reporting period (12/9– 12/22)	% Change between reporting periods
30338	51	<10	↑ 920.0%
30339	176	22	↑ 700.0%
30340	<10	0	-
30341	<10	0	-
30342	764	211	↑ 262.1%
30344	1154	305	↑ 278.4%
30349	2169	588	↑ 268.9%
30350	793	222	↑ 257.2%
30354	465	93	↑ 400.0%
30358	0	<10	↓ 100.0%
30363	96	37	↑ 159.5%
30606	0	0	-
31131	0	0	-
31150	0	0	-
Unknown	263	103	-

¹**New cases:** Cases diagnosed in most recent 28 days (based on reported dates of positive sample collection). To allow for lag in reporting results of new diagnoses from samples collected in the most recent week, data used for incident diagnoses analyses were moved back by one week. ²**Percent change:** These reflect the percentage increase or decrease of new diagnoses between the 14 days preceding the past 7 days and the 14 days preceding that. Changes in ZIP codes with less than 10 cases in both 2 week intervals are not reported. Some zip codes that refer only to PO Box zip codes and not actual residential addresses were recently removed from the above table.

COVID-19 HOSPITALIZATIONS, ICU ADMISSIONS AND DEATHS IN FULTON

Fig. 11. Fulton County Covid-19 Cases Hospitalized and Admitted to ICU by Month

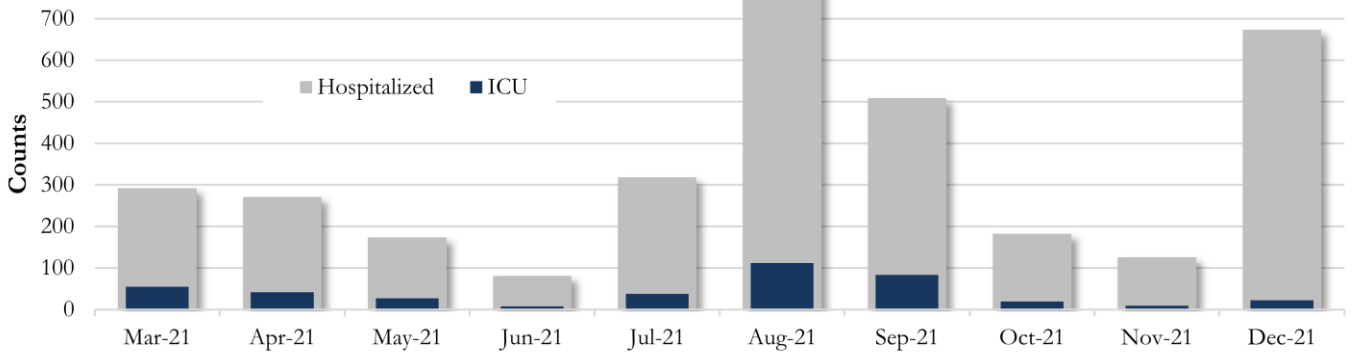
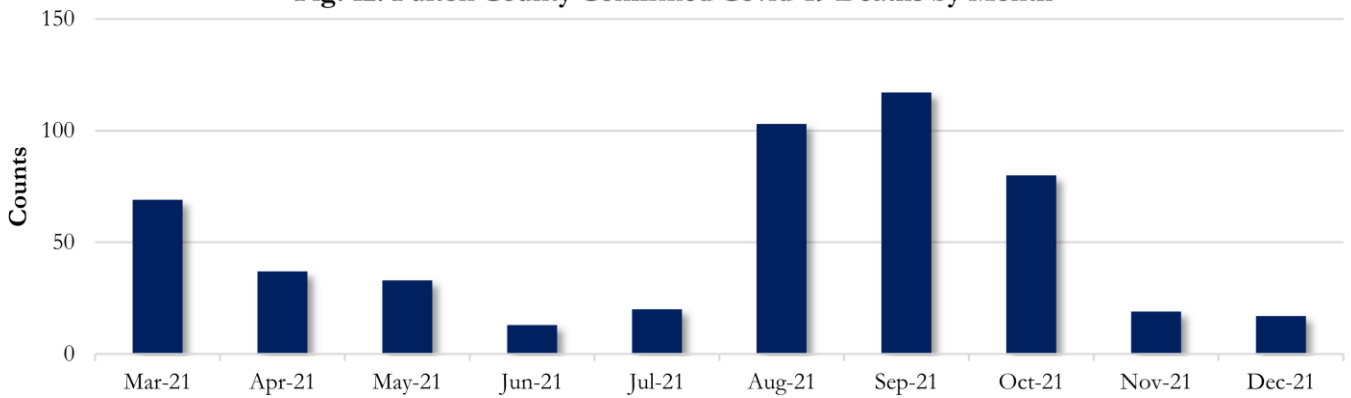
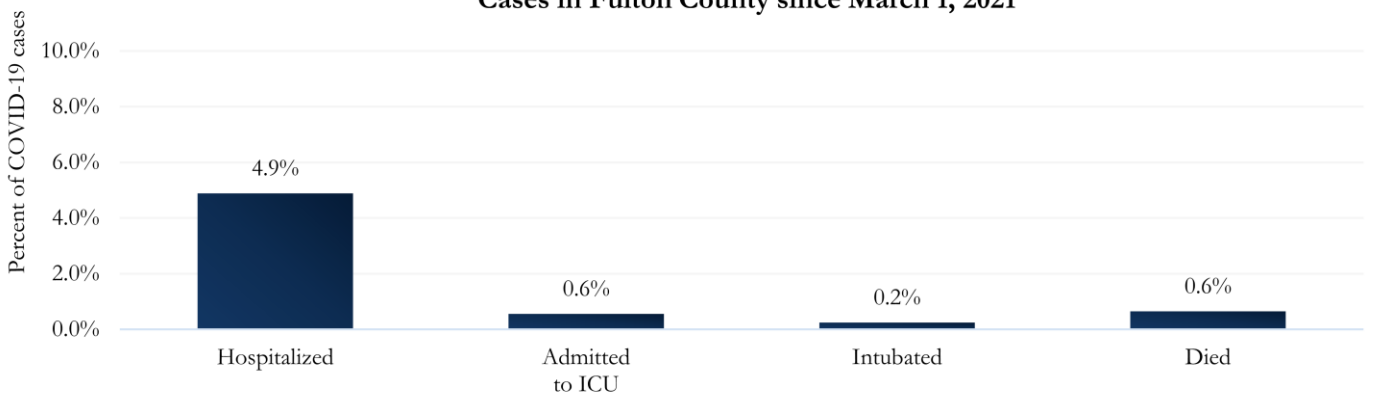


Fig. 12. Fulton County Confirmed Covid-19 Deaths by Month

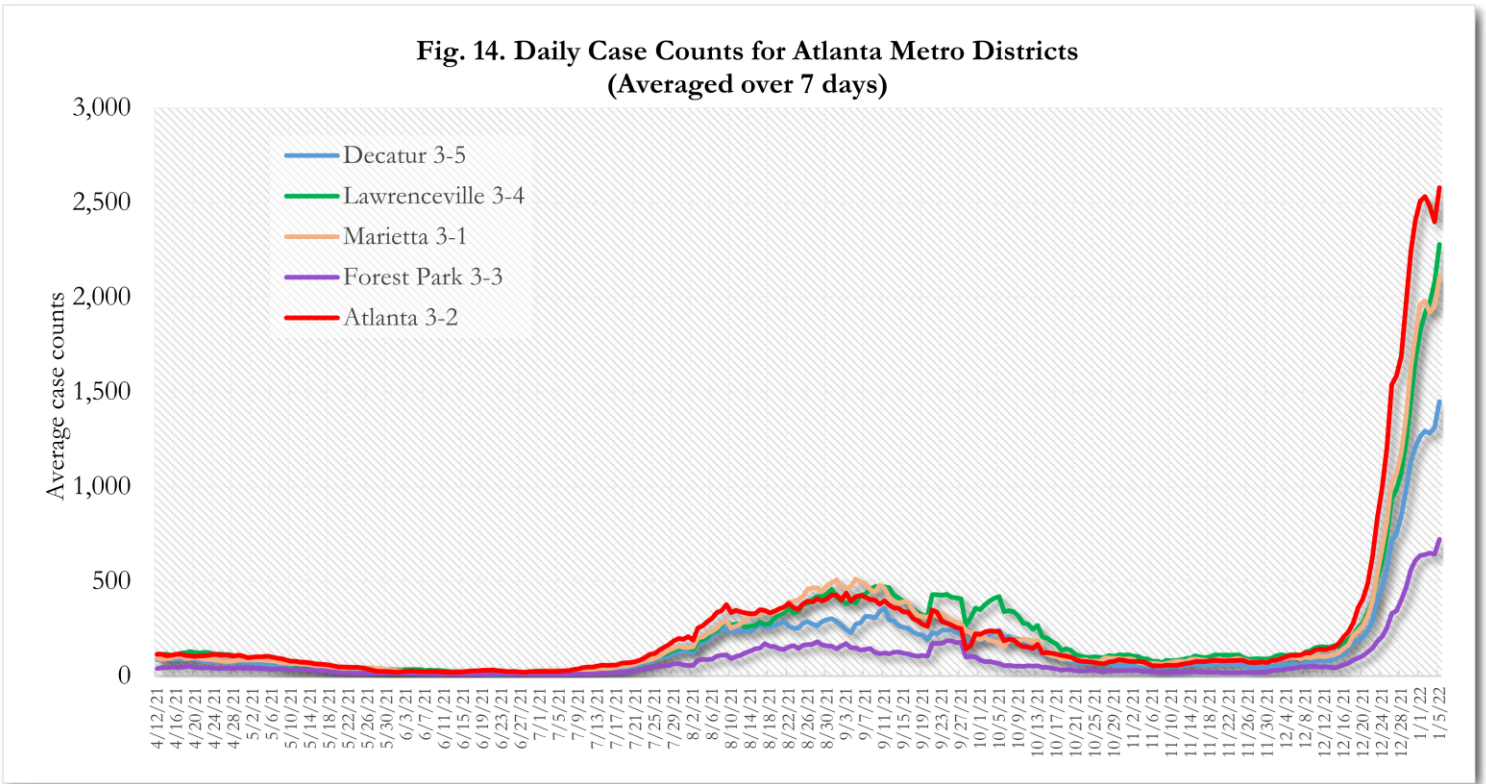


Values for November and December 2021 in figures 11 and 12 are subject to change as more hospitalizations, ICU admissions, and deaths get reported to state and local entities.

Fig. 13. Hospitalizations, ICU Admissions, Intubations, and Deaths among all Covid-19 Cases in Fulton County since March 1, 2021



COVID-19 CASE TRENDS IN FULTON AND SURROUNDING DISTRICTS



This figure uses date of report as provided from DPH.

DEMOGRAPHIC DISTRIBUTIONS – COVID-19 CASES AND DEATHS

Table A - Cumulative and recent confirmed Covid-19 case and death counts by gender, age, and race/ethnicity in Fulton County, Georgia. Past 28 day period refers to December 9, 2021 – January 5, 2022

	Total Confirmed Cases	% of Total Cases	Confirmed Cases past 28 days	% of Confirmed Cases past 28 days	Total Confirmed Deaths	% of Total Deaths	Confirmed Deaths past 28 days	% of Confirmed Deaths past 28 days
TOTAL	157278		36925		1745		12	
Female	85163	54.1%	20914	56.6%	836	47.9%	<10	50.0%
Male	71202	45.3%	15600	42.2%	909	52.1%	<10	50.0%
Unknown*	913	<1%	411	<1%	0	-	0	-
0-9	9217	5.9%	2478	6.7%	0	-	0	-
10-19	18449	11.7%	4063	11.0%	<10	<1%	0	-
20-29	34077	21.7%	8356	22.6%	<10	<1%	0	-
30-39	31130	19.8%	8036	21.8%	51	2.9%	0	-
40-49	23826	15.1%	5809	15.7%	64	3.7%	0	-
50-59	19758	12.6%	4375	11.8%	188	10.8%	0	-
60-69	11395	7.2%	2290	6.2%	332	19.0%	<10	25.0%
≥70	9311	5.9%	1485	4.0%	1103	63.2%	<10	75.0%
Unknown*	115	<1%	<10	<1%	0	-	0	-
Asian, NH	6510	4.1%	1662	4.5%	26	1.5%	<10	8.3%
Black, NH	70457	44.8%	15875	43.0%	1111	63.7%	<10	33.3%
White, NH	45064	28.7%	6953	18.8%	524	30.0%	<10	41.7%
Hispanic, all races	14278	9.1%	2366	6.4%	74	4.2%	<10	8.3%
Other, NH	4726	3.0%	999	2.7%	10	<1%	<10	8.3%
Unknown*	16243	10.3%	9070	24.6%	0	-	0	-

*Unknown includes cases not yet interviewed. 28 days delayed by seven to account for lag in reporting lab results. Deaths refer to all persons who had a positive PCR test result for Covid-19 and there is evidence that Covid-19 was the cause of death or a significant contributor to their death.

The following data are updated every two weeks.

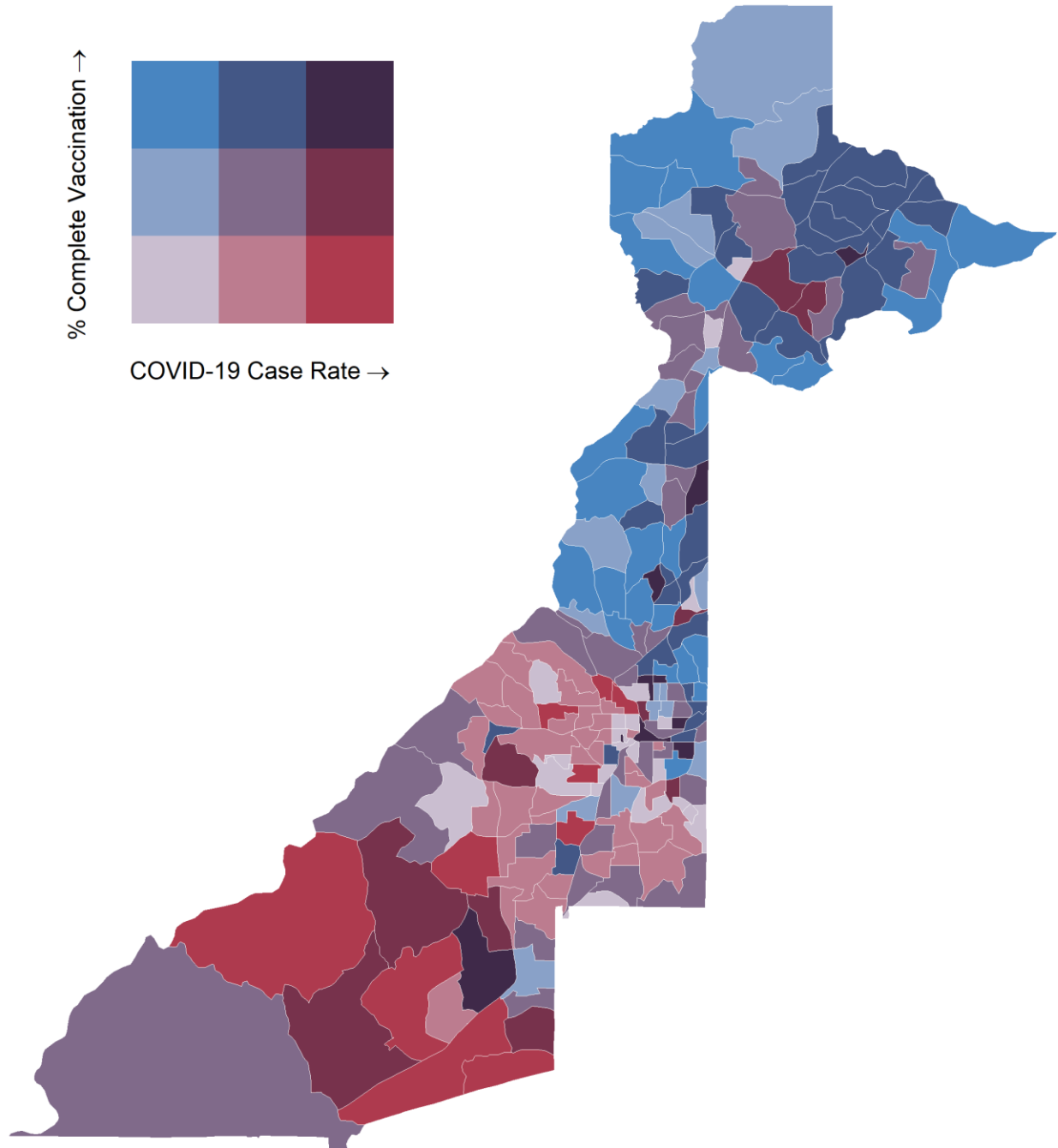
Last updated 1/5/2022

Data are from confirmed cases and PCR testing only.

These data are generated using a fixed start date and counted forward in 14-day intervals. Using these time blocks allows for the stability in trends over time and accounts for delays in reporting lab results.

Please visit the Georgia Department of Public Health Daily Status Report [here](#) for cumulative daily counts.

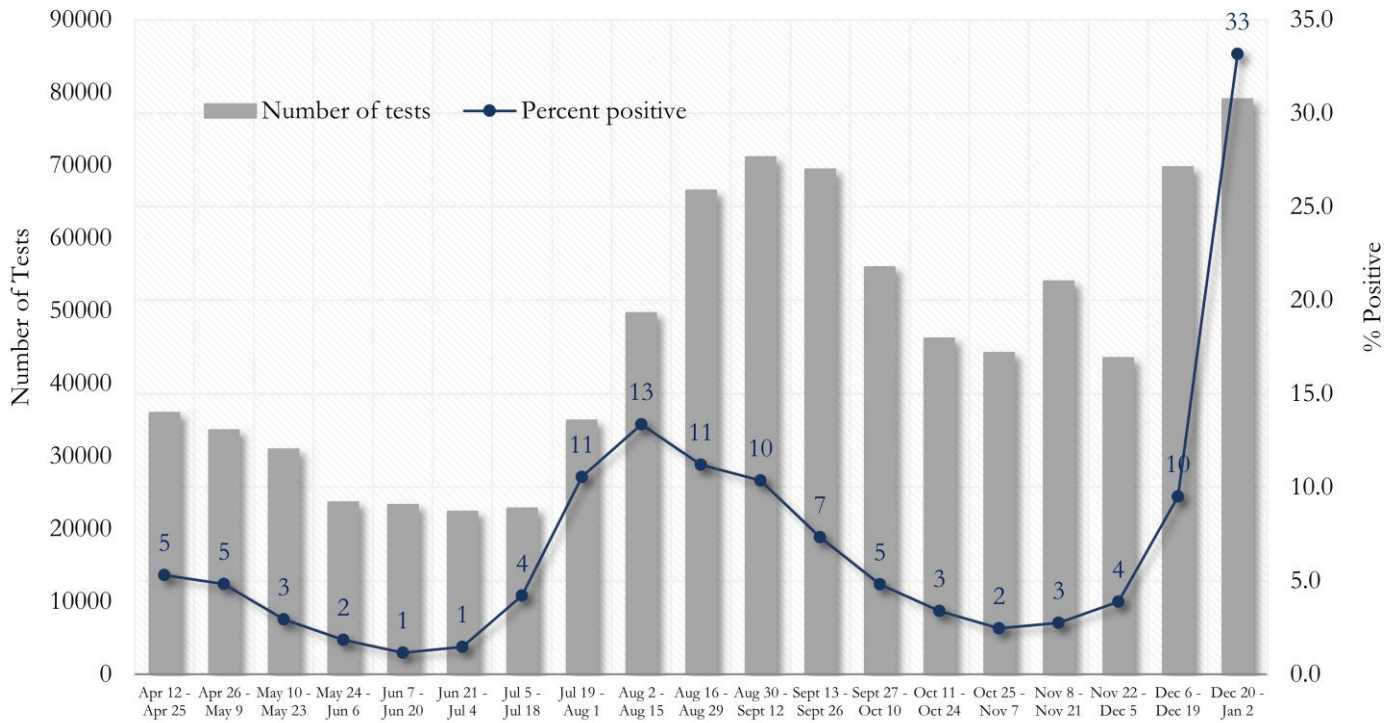
Fig. 15. Percent Complete Vaccination and COVID-19 Case Rate (per 100,000 population) by Census Tract December 6, 2021 – January 2, 2022



How to interpret these colors: The darker the blue, the better. The upper most blue box indicates low COVID-19 case rates and high vaccination coverage. Red is not ideal as red indicates high COVID-19 case rates and low vaccination coverage. Colors in between indicate varying combinations of COVID-19 case rates and vaccination coverage. COVID-19 case rate reflects new COVID-19 cases diagnosed between December 6, 2021 and January 2, 2022 across Fulton County. Vaccination data from: <https://experience.arcgis.com/experience/3d8eea39f5c1443db1743a4cb8948a9c>

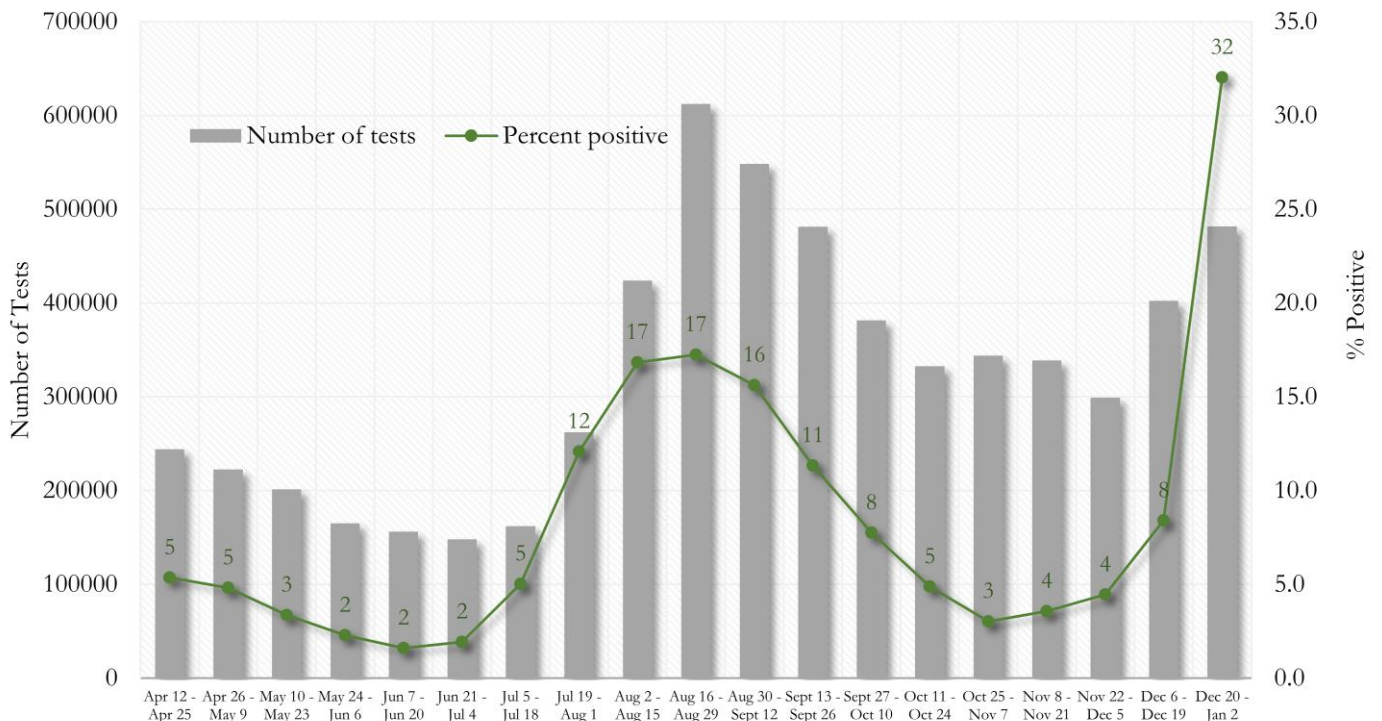
COVID-19 TESTING AND POSITIVITY IN FULTON COUNTY AND GEORGIA

Fig. 16. Trends in Positive Covid-19 Tests in Fulton County by 14-day Periods



*Data on Polymerase Chain Reaction (PCR) tests only included.

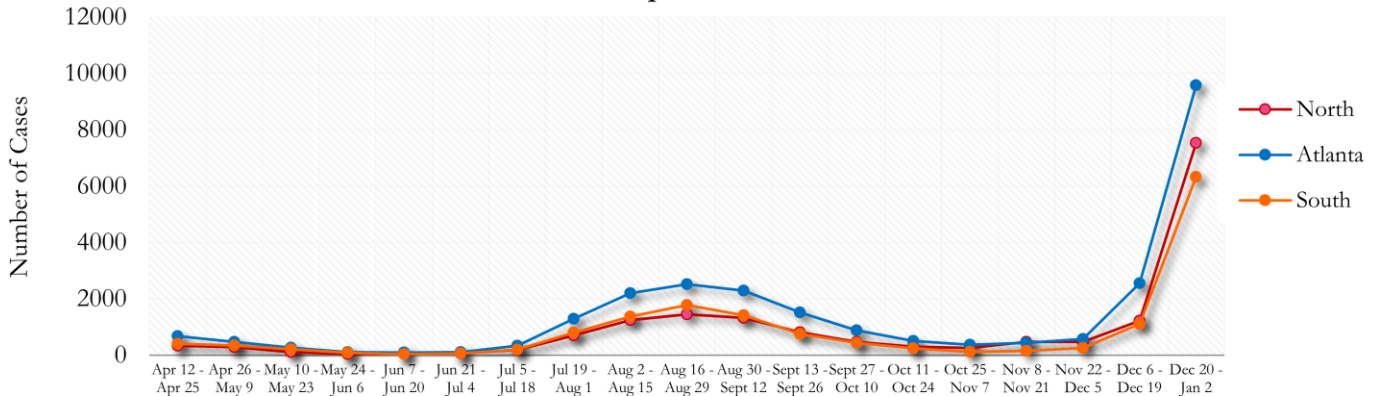
Fig. 17. Trends in Positive Covid-19 Tests in Georgia by 14-day Periods



*Data on Polymerase Chain Reaction (PCR) tests only included.

TRENDS IN COVID-19 CASES AMONG DEMOGRAPHIC GROUPS (14 DAY PERIODS)

Fig. 18. Trends in Geographic distribution of Covid-19 Cases in Fulton County by 14-day periods



In the past two weeks, Atlanta accounted for the majority of new cases.

*North - Includes all Fulton cities north of Atlanta (Alpharetta, Johns Creek, Milton, Mountain Park, Roswell, Sandy Springs)

*South - Includes all Fulton cities south of Atlanta (Chattahoochee Hills, College Park, East Point, Fairburn, Hapeville, Palmetto, South Fulton, and Union City)

Fig. 19. Trends in Racial Distribution of Covid-19 Cases in Fulton County by 14-day periods

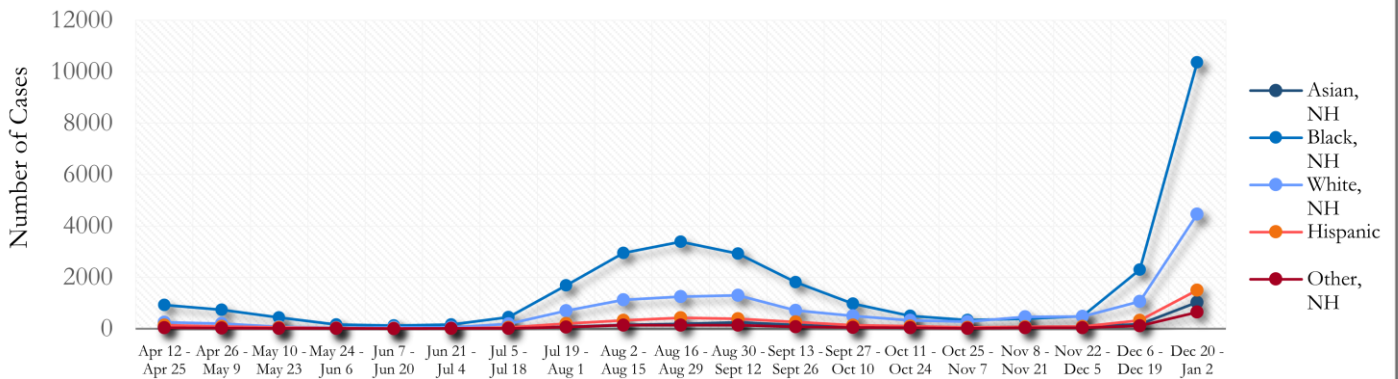
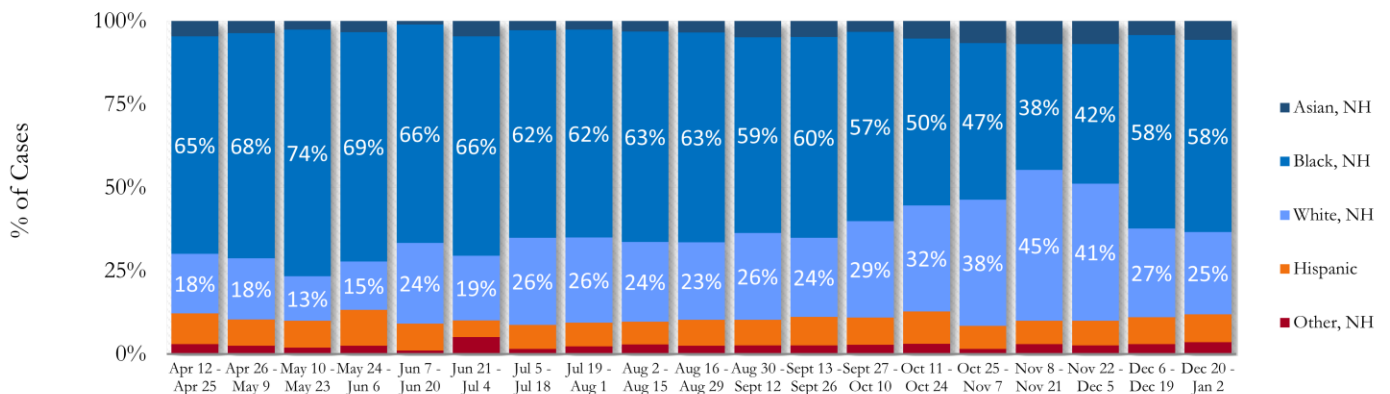


Fig. 20. Racial Distribution of Covid-19 Cases in Fulton County by 14-day periods



About 9% of all Fulton County COVID cases are missing data on patient race and ethnicity and in the past two weeks, about 26% of cases are missing this data. Percentages do not include the missing data and thus are subject to change as data are cleaned.

Fig. 21. Trends in Sex Distribution of Covid-19 Cases in Fulton County by 14-day periods

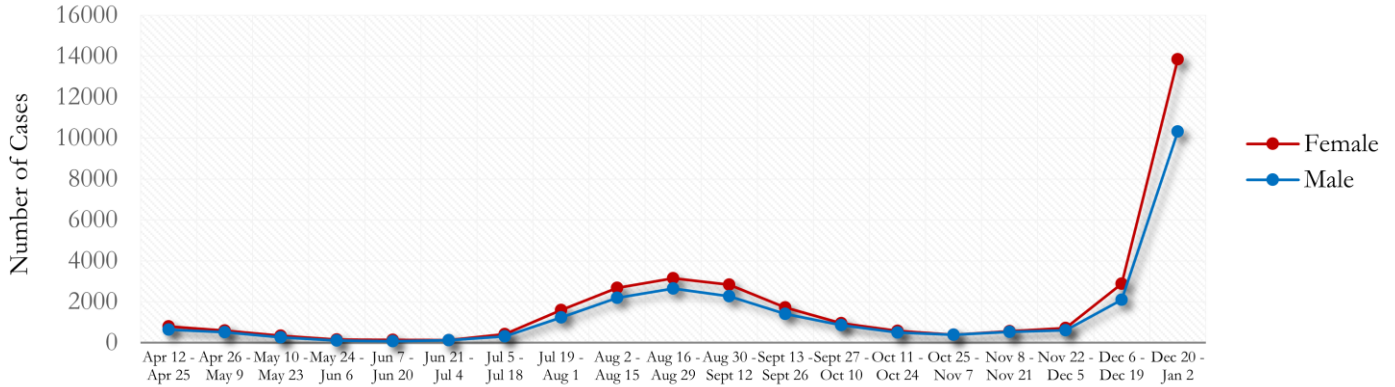
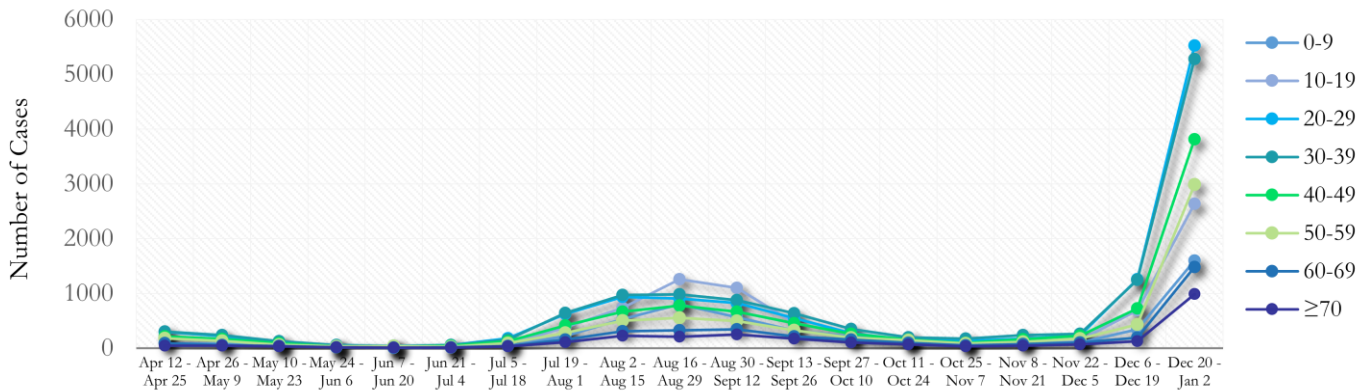
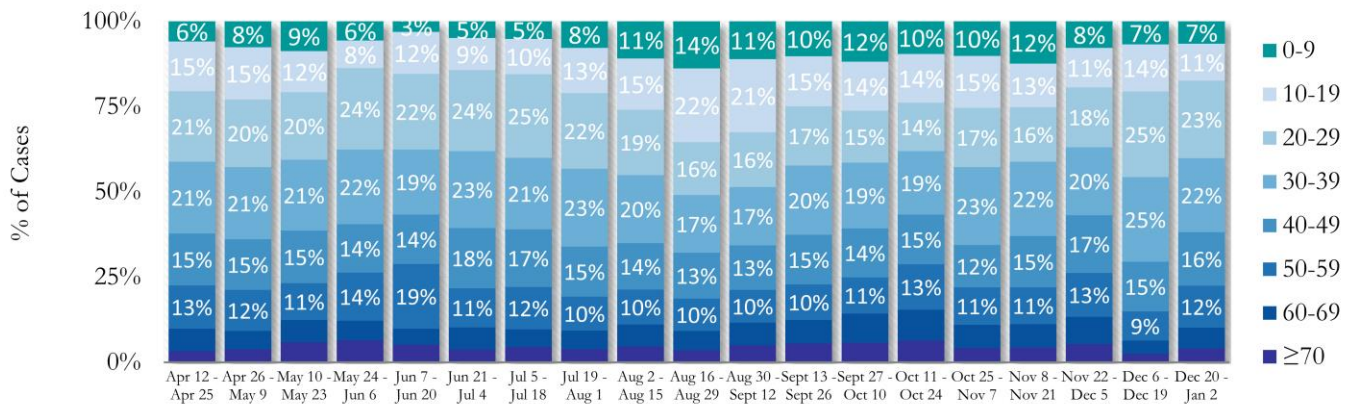


Fig. 22. Trends in Age Distribution of Covid-19 Cases in Fulton County by 14-day periods



In the most recent two weeks, 20-29 year olds and 30-39 year olds accounted for the majority of new cases.

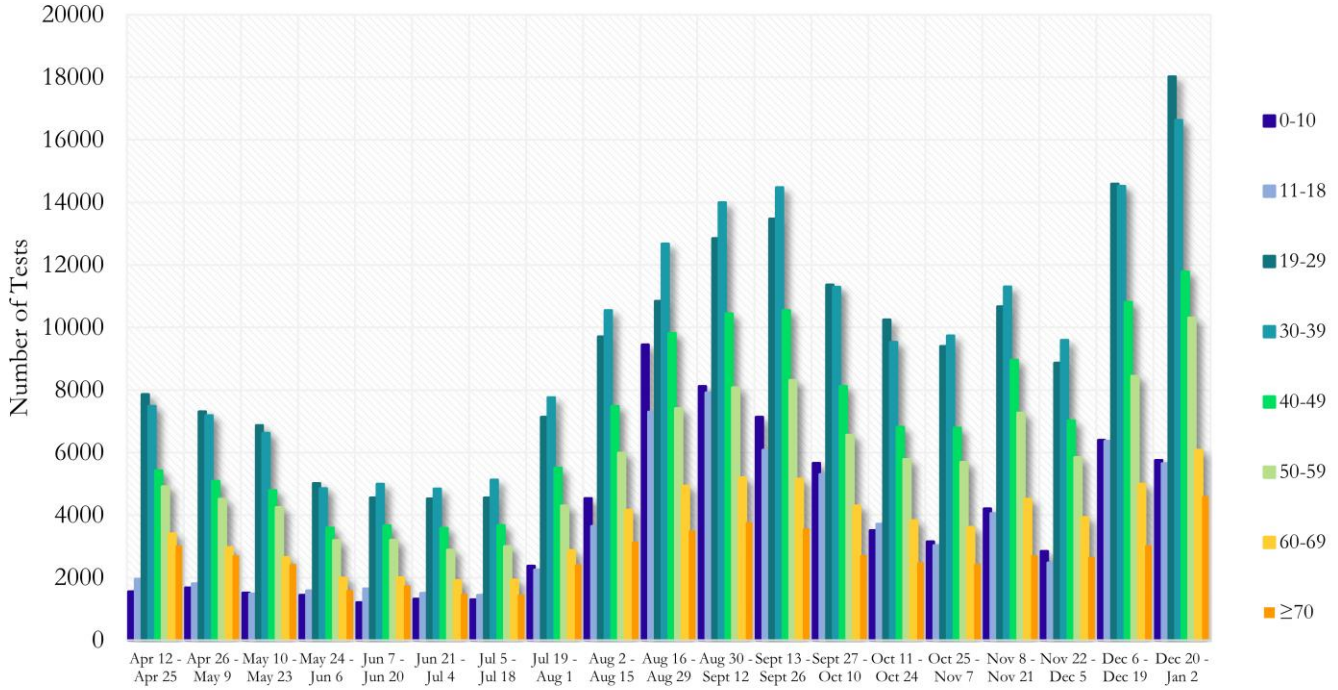
Fig. 23. Age Distribution of Covid-19 Cases in Fulton County by 14-day periods



Value labels under 10% are not shown. Percentages do not include the missing data and thus are subject to change as data are cleaned.

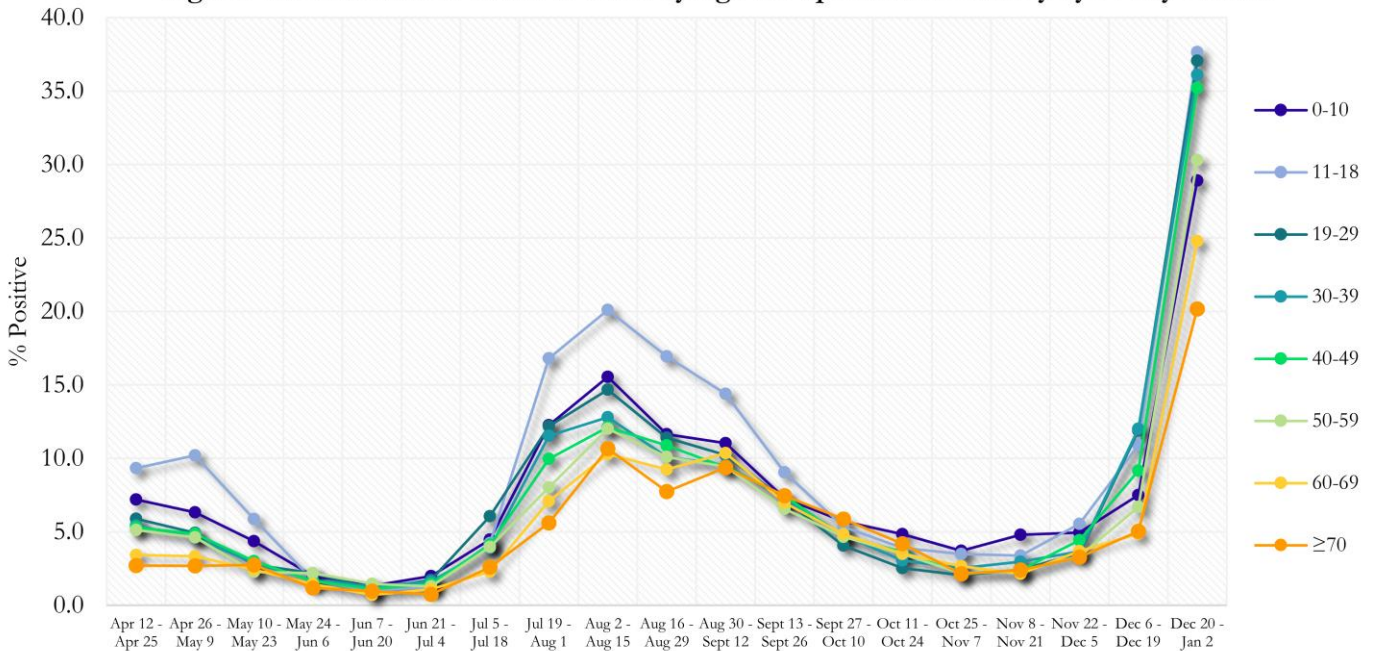
COVID-19 TESTING AND POSITIVITY IN FULTON COUNTY BY AGE AND RACE

Fig. 24. Covid-19 Tests by Age in Fulton County by 14-day Periods



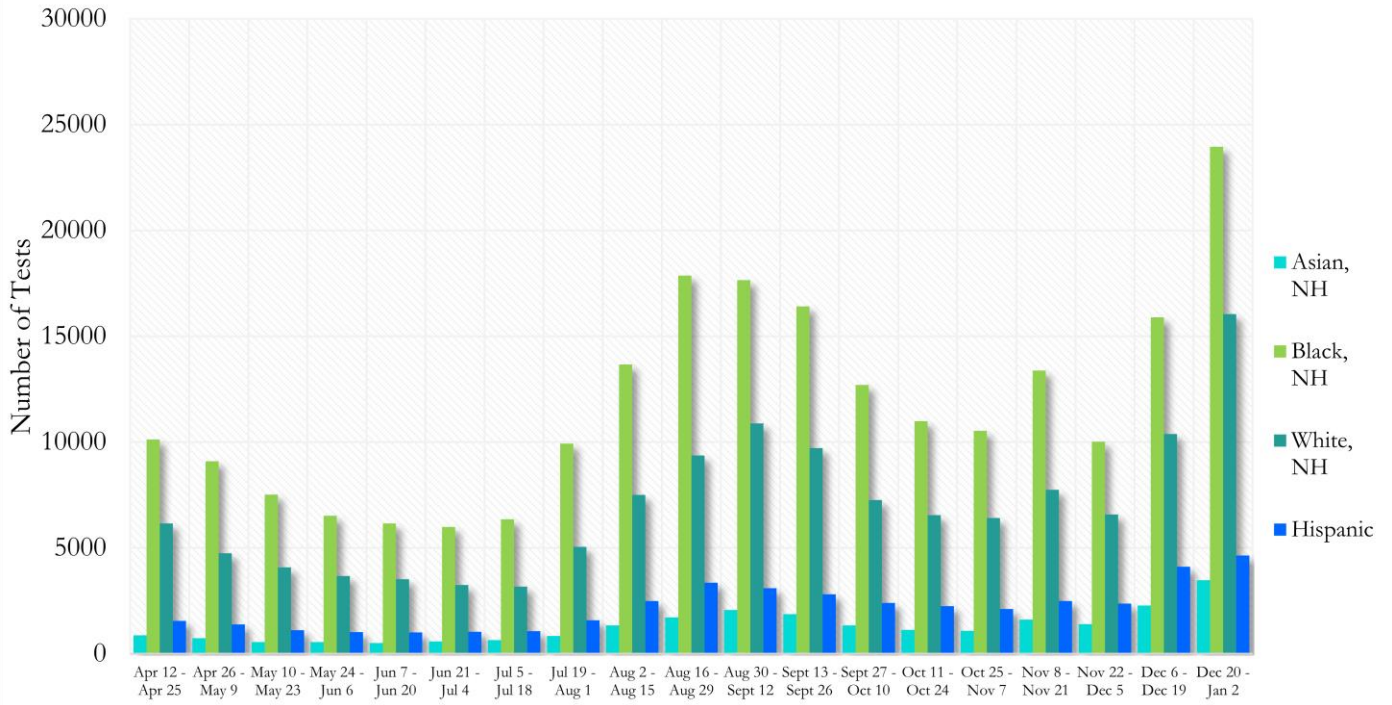
*Data on Polymerase Chain Reaction (PCR) tests only included.

Fig. 25. Percent Positive Covid-19 Tests by Age Group in Fulton County by 14-day Periods



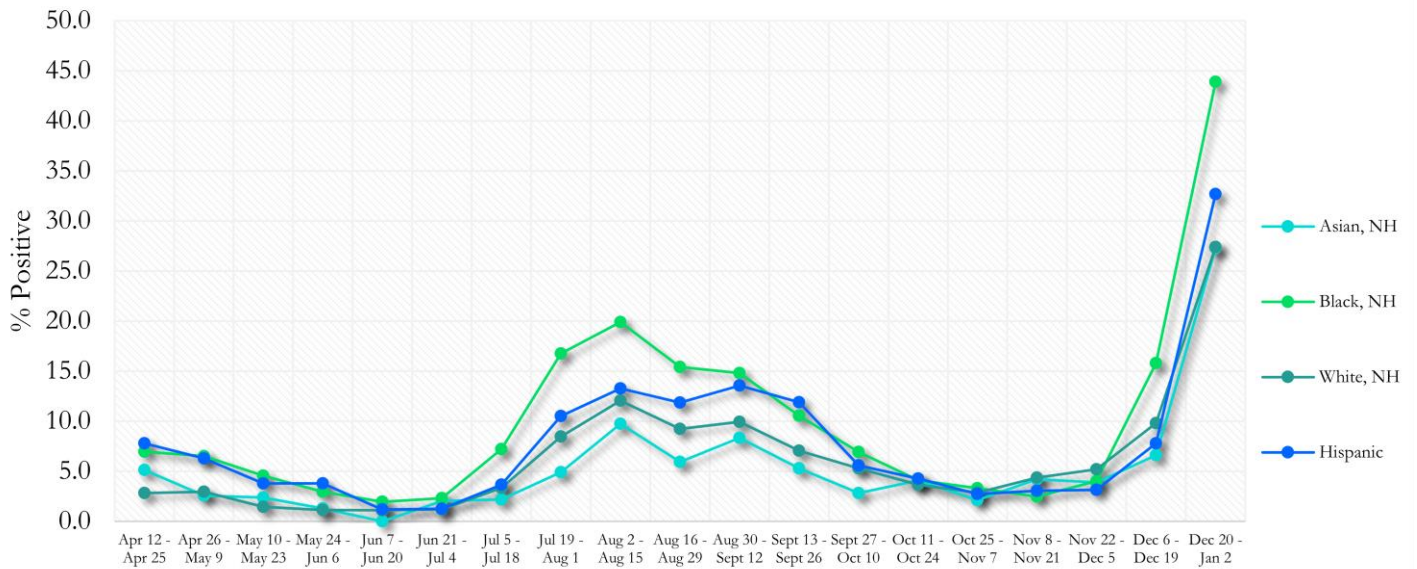
*Data on Polymerase Chain Reaction (PCR) tests only included.

Fig. 26. Covid-19 Tests by Race and Ethnicity in Fulton County by 14-day Periods



*Data on Polymerase Chain Reaction (PCR) tests only included. For the recent two weeks, 51% of test results did not have race/ethnicity information.

Fig. 27. Percent Positive Covid-19 Tests by Race and Ethnicity in Fulton County by 14-day Periods

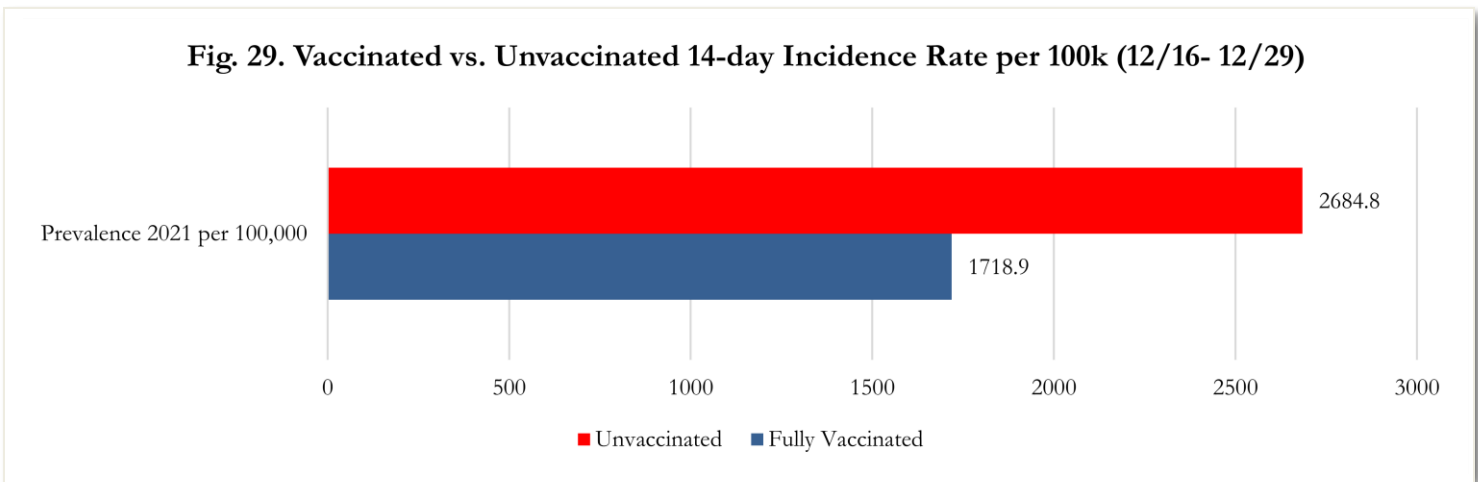
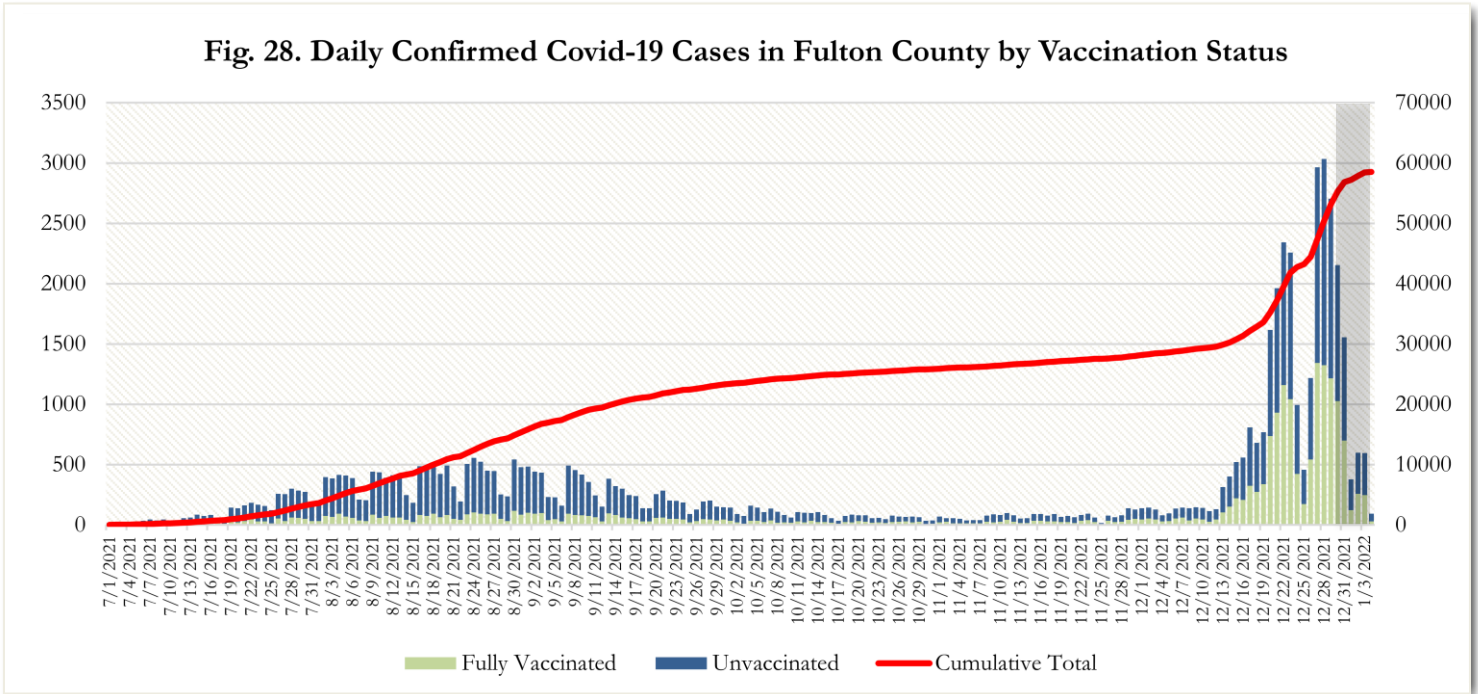


*Data on Polymerase Chain Reaction (PCR) tests only included.

FULTON COUNTY VACCINATION CASE DATA

There are currently **596,247 fully vaccinated residents** in Fulton County, of which **3% have been a confirmed case of Covid-19 since 12/31/20**. Of the **470,463 partially vaccinated or unvaccinated** Fulton County residents, **15% have been a confirmed case of Covid-19 since 12/31/20**.

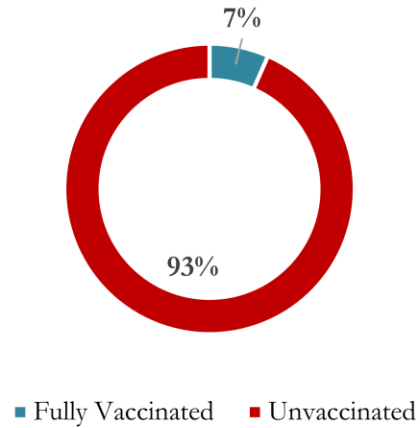
Since July 1, 2021, Fulton County has reported **58,519 new confirmed Covid-19 cases**. **67% (39,244)** of these new cases occurred in **unvaccinated individuals**. **33% (19,275)** of these new cases occurred in **fully vaccinated individuals**.



Incidence rate for each population is calculated using the number of new Covid-19 cases during the 14 day reporting period by vaccination status over the number of individuals in each population (vaccinated residents vs. unvaccinated residents). The number of individuals in each population is provided on the DPH Covid-19 Vaccine Dashboard.

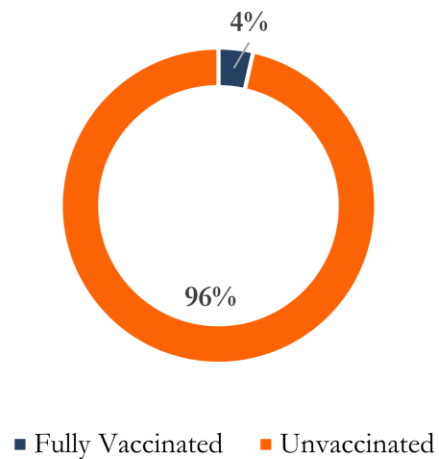
SEVERE OUTCOMES BY VACCINATION STATUS

Fig. 30. Confirmed Cases Hospitalized for Any Reason by Vaccination Status



In accordance with DPH, data is displayed as confirmed **cases hospitalized “for any reason” and tested positive for Covid-19**. They were not necessarily hospitalized due to Covid-19.

Fig. 31. Confirmed Covid-19 Deaths by Vaccination Status



Of the 4% of deaths that occurred in vaccinated individuals, 95% were over the age of 60. Of that, 85% were over the age of 70.

Data on breakthrough cases among those fully vaccinated with booster is forthcoming.