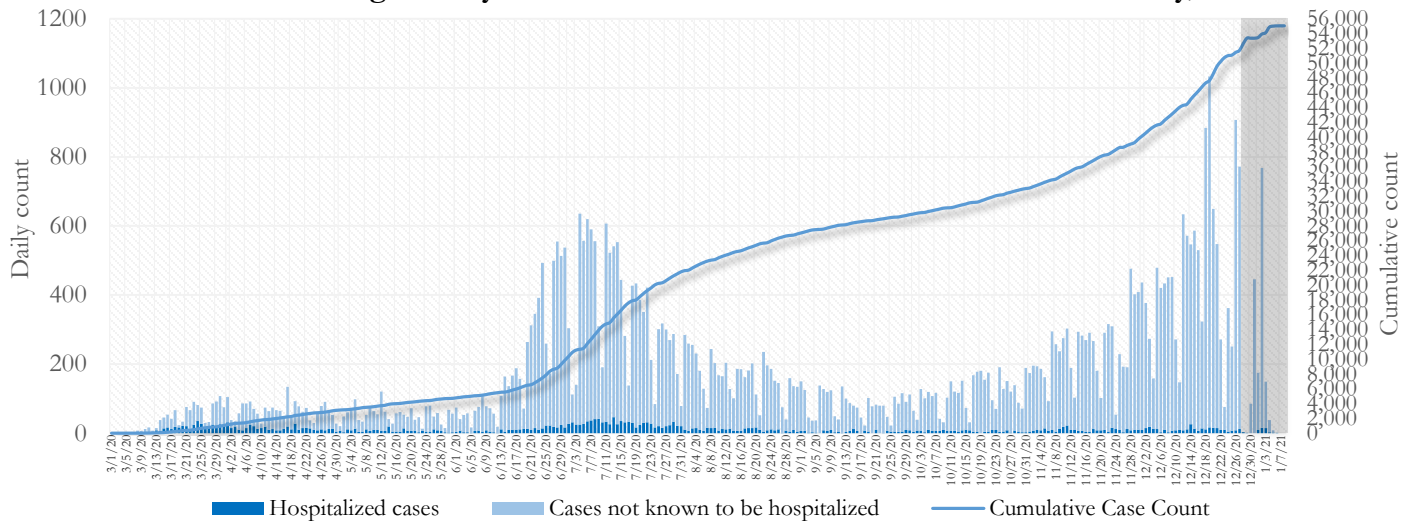


SUMMARY

- As of January 8, 2021, Fulton County has recorded **55,059 cases of the 2019 novel coronavirus (COVID-19)** and **759 confirmed COVID-19 deaths**. 113 deaths are currently being reviewed by GA DPH to confirm cause of death.
- Of the **6,685 new cases** between December 19 and January 1, the central portion of the county (Atlanta) accounted for 39% while the northern and southern parts accounted for 41% and 17% respectively.
- By city, new COVID-19 case rates range from 367.5 per 100,000 persons (College Park) to 1120.0 per 100,000 persons (Mountain Park). [**Fulton County Diagnoses Rates (per 100,000 persons): Cumulative – 5009.1; Incidence –608.2**]. See map showing incidence case rate by ZIP code on Pg.17.
- Among all persons diagnosed with COVID-19 in Fulton County since July 1, **4.7% required hospitalization and 0.9% died**.
- Of all testing done in Fulton County between December 7 and December 20, the percent positivity rate was **9.4%.***

Fig 1. Daily and Cumulative COVID-19 cases in Fulton County, GA



*Counts shown reflect the number of confirmed cases as of 10:00 pm on 1/7/21 using the date of first positive sample collection. Where date of sample collection was not available or missing, the date of report creation in GA SENDSS was used instead. **Note:** Delays in data reporting may cause changes in data counts, particularly in the shaded portion. Data throughout this report are preliminary and subject to ongoing data cleaning processes, and thus are subject to change. This report includes data on confirmed PCR tests only. For data on antigen testing, see the [GA DPH County Indicator Reports here](#).

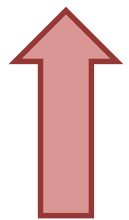
DISTRIBUTION OF NEW COVID-19 CASES BY REGION

New cases: 39% of the new COVID-19 cases in the past 2 weeks occurred in Atlanta while 41% and 17% occurred in the Northern and Southern regions of the county respectively.

Fulton Region	% Cumulative count	% New cases*
Atlanta	42.8%	39.0%
North ¹	33.2%	41.4%
South ²	19.1%	16.6%
Unincorporated/Unknown	4.9%	3.0%

¹Includes all Fulton County cities north of Atlanta (Alpharetta, Johns Creek, Milton, Mountain Park, Roswell, Sandy Springs) | ²Includes all cities south of Atlanta (Chattahoochee Hills, College Park, East Point, Fairburn, Hapeville, Palmetto, South Fulton, and Union City) ***New cases:** Cases diagnosed in the past 2 weeks only (between 12/19/20 – 1/1/21).

In the recent two week reporting period (12/19-1/1), there were more new cases of COVID-19 in Fulton County than the previous two weeks (12/5-12/18).



*Delayed a week to account for testing results turnaround time.

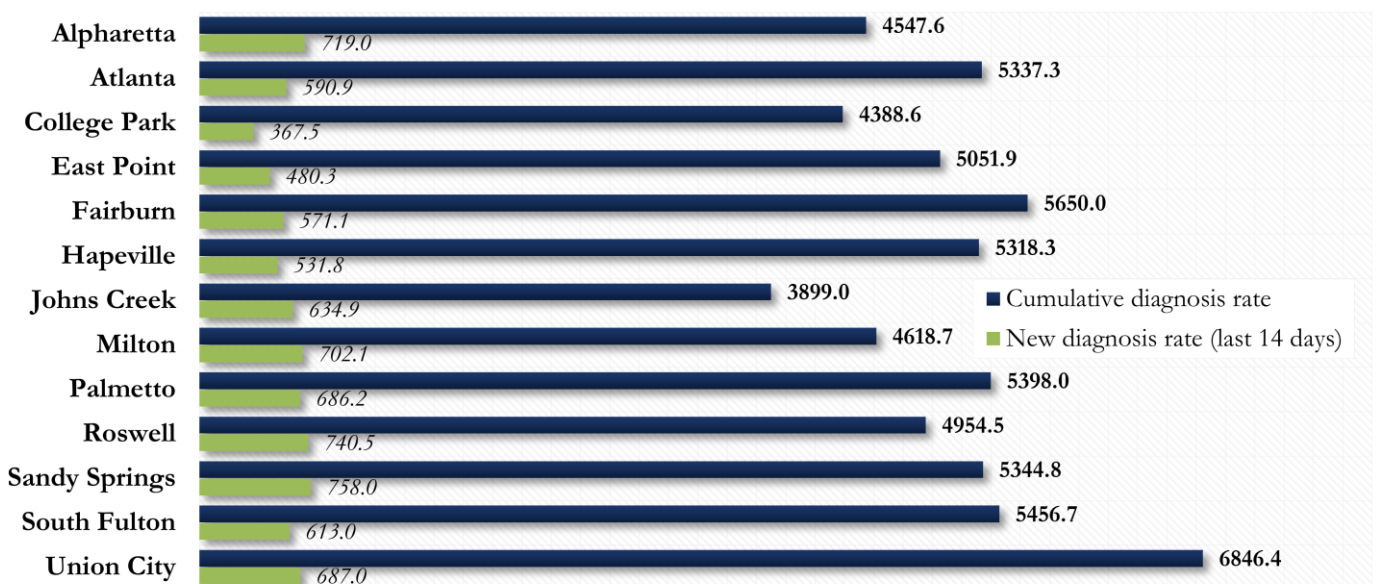
*Due to a technological delay on the SendSS database, the demographic and testing data on pgs. 10-11 and 15-16 has not yet been updated.

COVID-19 CASE COUNTS AND RATES BY CITY

	Prior (1/6/21)	Current Total (1/8/21)			New Cases (Period: 12/5/20 – 1/1/21) ¹			
	Count	Count	%	Cum. Rate ²	Recent 14 d. (12/19–1/1)	Prior 14 d. (12/5–12/18)	% change ³	Rate ⁴ (Last 14 d).
Alpharetta	2864	2941	5.3%	4547.6	465	417	↑ 11.5%	719.0
Atlanta	23042	23547	42.8%	5337.3	2607	2395	↑ 8.9%	590.9
Chattahoochee Hills	77	80	0.1%	2790.4	13	13	-	453.4
College Park	587	609	1.1%	4388.6	51	48	↑ 6.3%	367.5
East Point	1720	1767	3.2%	5051.9	168	163	↑ 3.1%	480.3
Fairburn	809	831	1.5%	5650.0	84	79	↑ 6.3%	571.1
Hapeville	348	350	0.6%	5318.3	35	24	↑ 45.8%	531.8
Johns Creek	3167	3261	5.9%	3899.0	531	466	↑ 13.9%	634.9
Milton	1696	1763	3.2%	4618.7	268	208	↑ 28.8%	702.1
Mountain Park	19	20	0.0%	3200.0	<10	<10	↑ 250.0%	1120.0 ⁵
Palmetto	222	236	0.4%	5398.0	30	29	↑ 3.4%	686.2
Roswell	4532	4670	8.5%	4954.5	698	496	↑ 40.7%	740.5
Sandy Springs	5474	5634	10.2%	5344.8	799	684	↑ 16.8%	758.0
South Fulton	5024	5190	9.4%	5456.7	583	463	↑ 25.9%	613.0
Union City	1400	1435	2.6%	6846.4	144	164	↓ 12.2%	687.0
Unknown	2661	2725	4.9%	-	196	134	-	-

¹**New cases:** Cases diagnosed in most recent 28 days (based on reported dates of positive sample collection). To allow for lag in reporting results of new diagnoses from samples collected in the most recent week, data used for incident diagnoses analyses were moved back by one week. ²**Cumulative diagnosis rate:** Population estimates from US Census Bureau used to calculate cumulative diagnoses rate. All rates shown are per 100,000 persons. ³**% change:** These reflect the percentage increase or decrease in new diagnoses between the 14 days preceding the most recent 7 days and the 14 days preceding that. ⁴**(Incidence) Rate:** Rate of new diagnoses in the last 14 day period preceding the immediate past week. ****Data cleaning** (either during case interviews or address geo-coding) may lead to reassignment of few cases from one territory to another based on their corrected addresses. These may appear as “decreases” when compared to the previous day’s count. These do not reflect errors in the data collection or analysis process but only reflect the minor day-to-day fluctuations in case counts that arise in an evolving public health database like COVID’s. ⁵Incidence rate is skewed high due to small population. **Note: All data reported are preliminary and subject to change.**

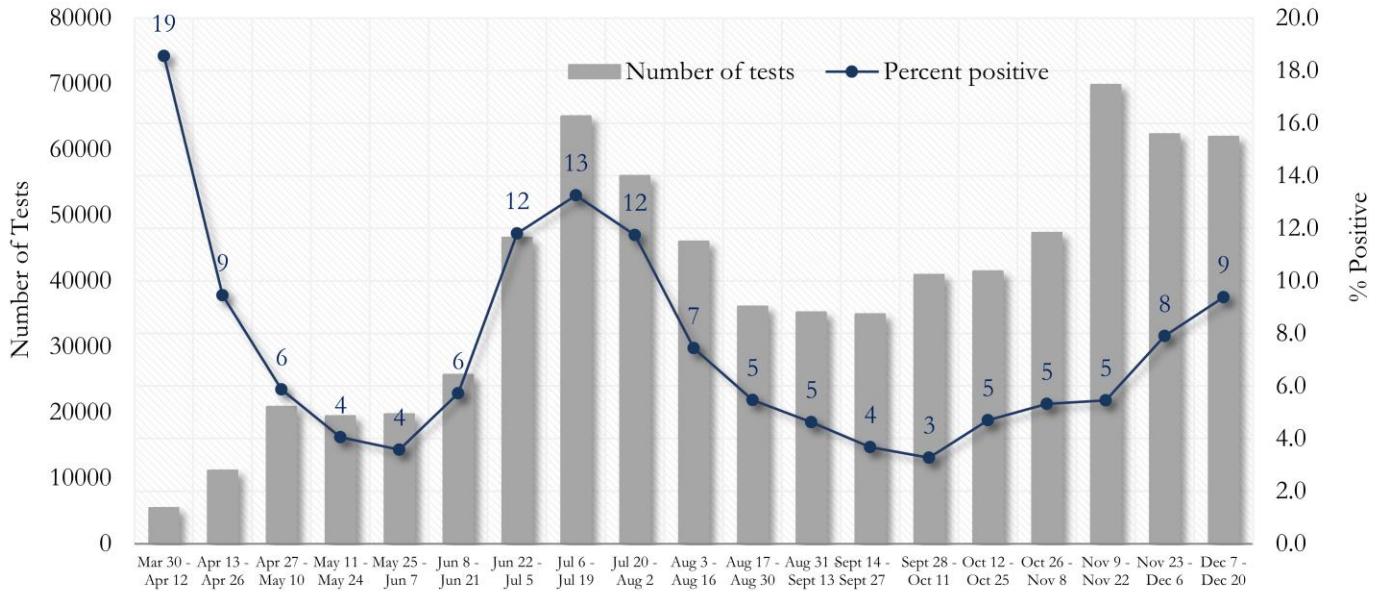
Fig. 2. Incident & Cumulative Diagnoses Rates for COVID-19 by City



*Rates shown are per 100,000 persons | **Note:** Mass testing in specific locations (e.g. long term care facilities) may cause sharp increases in the cumulative rate of COVID-19 diagnosis in those territories. All data shown are preliminary and are subject to change as testing results get updated.

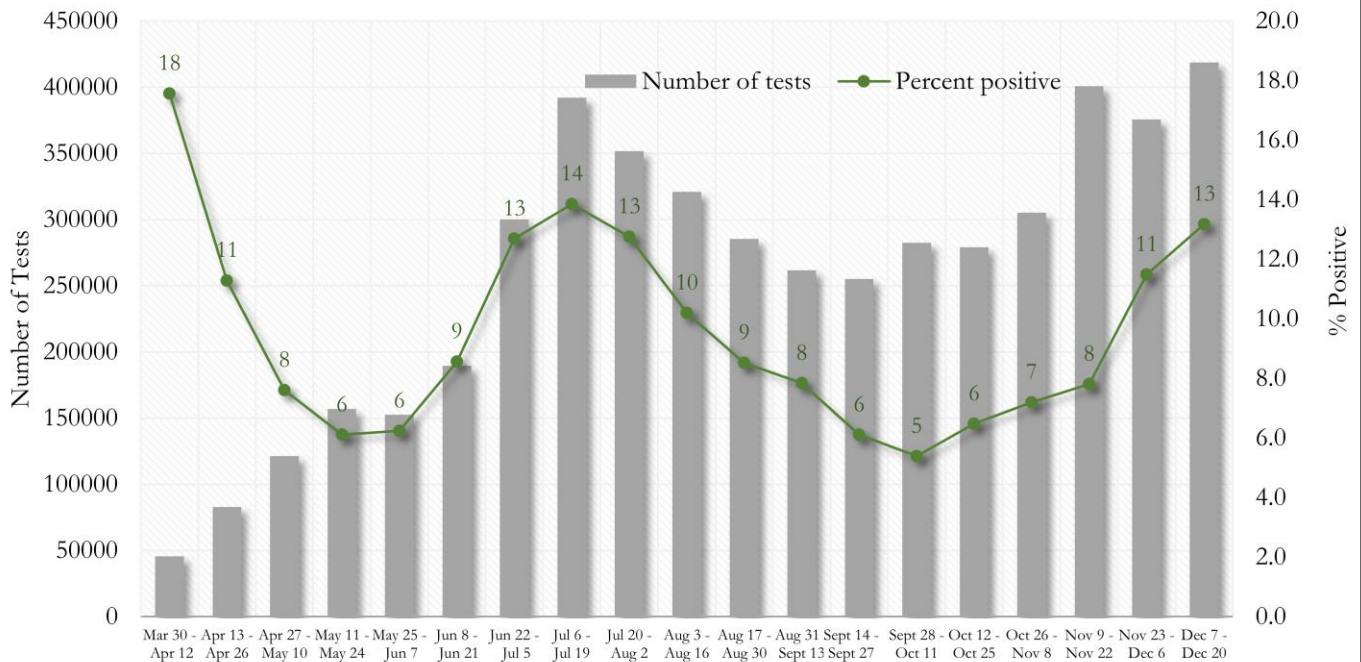
COVID-19 TESTING AND POSITIVITY IN FULTON COUNTY AND GEORGIA

Fig. 3. Trends in Positive COVID-19 Tests in Fulton County by 14-day Periods



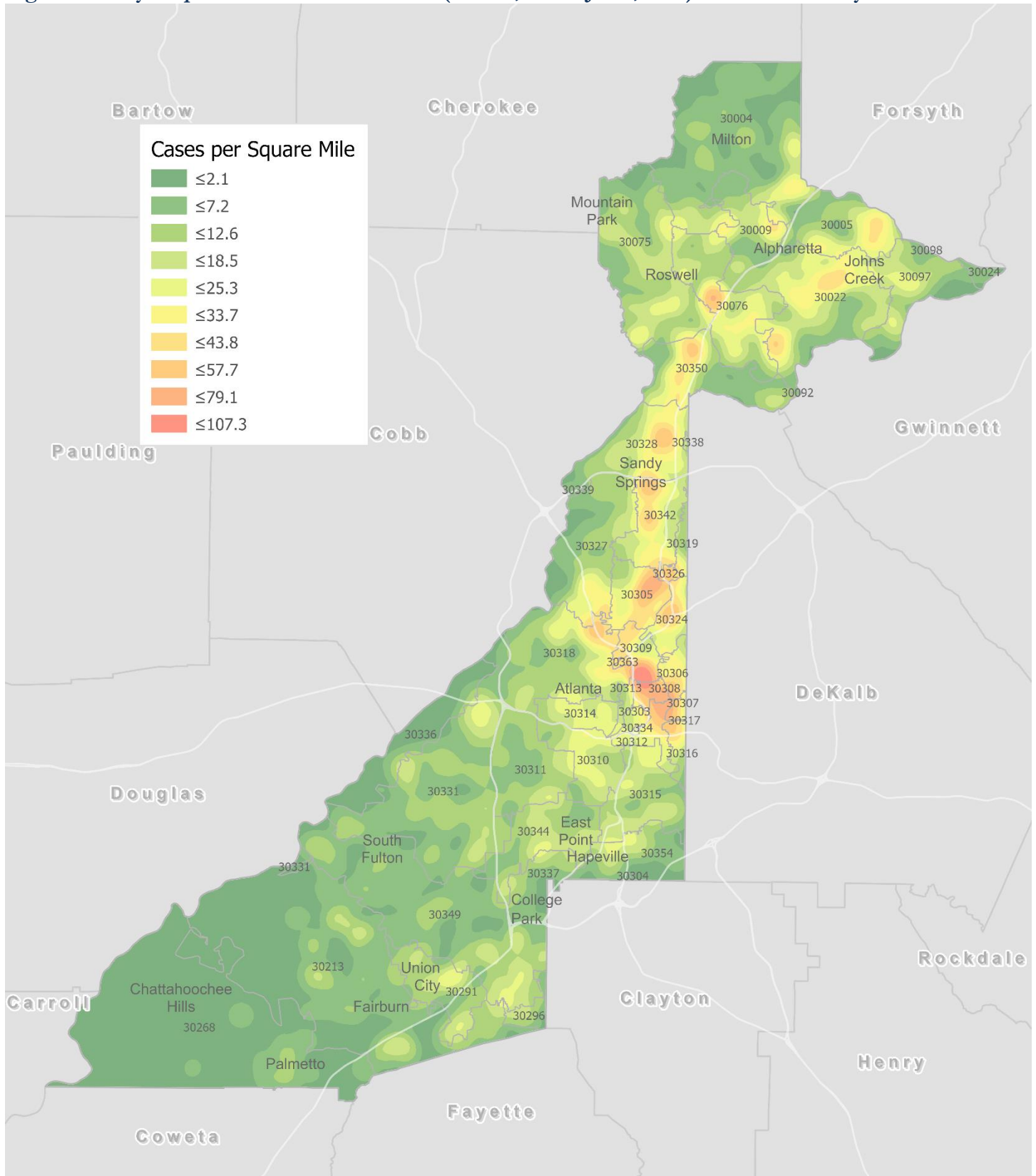
*Data on Polymerase Chain Reaction (PCR) tests only included. This rate is subject to change as more test results are reported.

Fig. 4. Trends in Positive COVID-19 Tests in Georgia by 14-day Periods



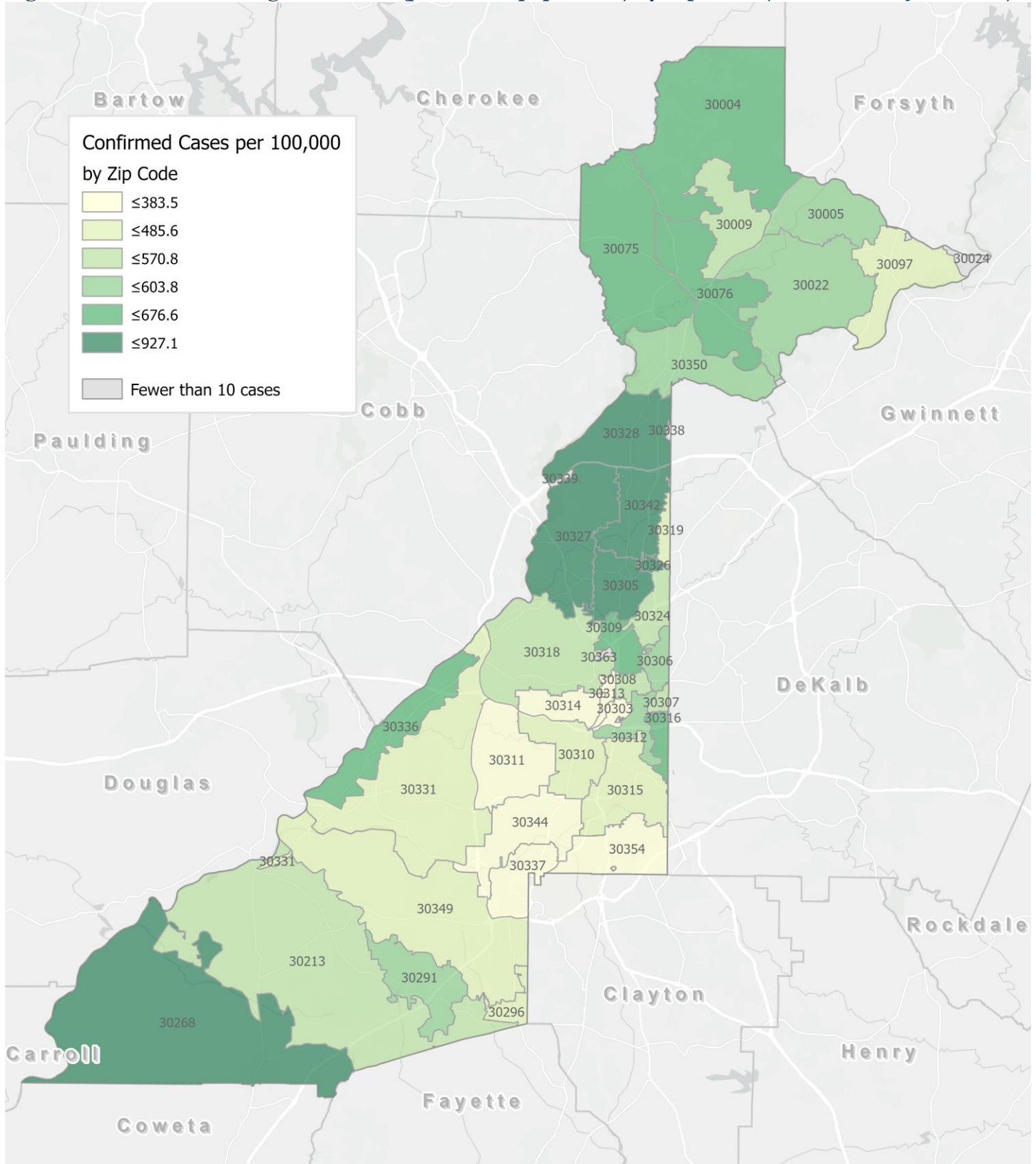
*Data on Polymerase Chain Reaction (PCR) tests only included. This rate is subject to change as more test results are reported.

Fig. 5. Density Map – New COVID-19 Cases (Dec 19, 2020– Jan 1, 2021) in Fulton County



New COVID-19 cases: Cases diagnosed in most recent 14 days (based on reported dates of positive sample collection). To allow for lag in reporting results of positive cases from samples collected in the immediate past 7 days, data used for incident diagnoses analyses are moved back by one week. Map reflects new COVID-19 cases diagnosed between Dec 19th 2020 and Jan 1st, 2021 across Fulton County, excluding LTCF cases.

Fig. 6. New COVID-19 Diagnoses Rates (per 100,000 population) by Zip Code (Dec 19, 2020– Jan 1, 2021)



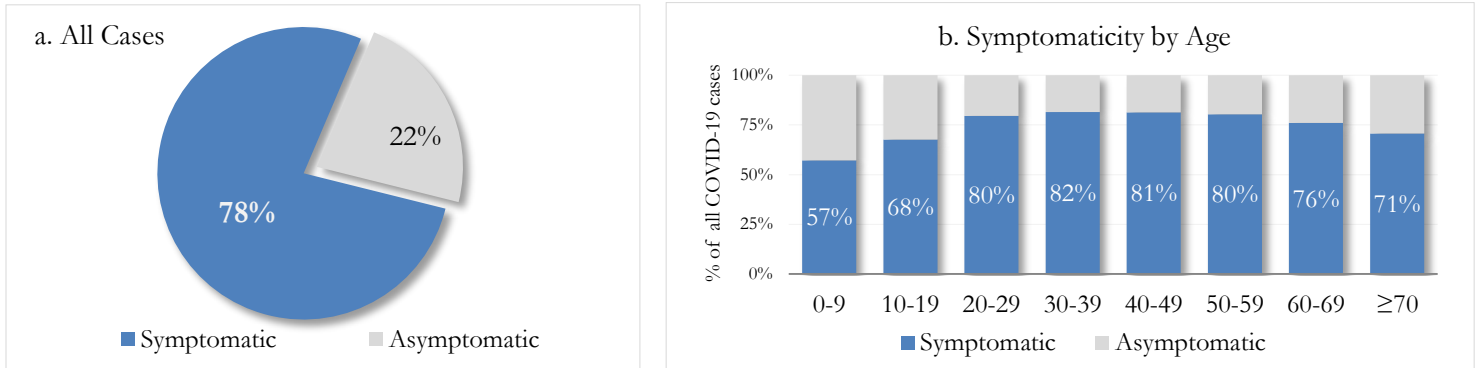
*Rates shown are per 100,000 populations.

New COVID-19 cases: Cases diagnosed in most recent 14 days (based on reported dates of positive sample collection). To allow for lag in reporting results of positive cases from samples collected in the immediate past 7 days, data used for incident diagnoses analyses are moved back by one week. Data used excludes outbreak-related cases at long-term care facilities and map shown reflects only the new non-LTCF cases diagnosed between the dates shown in map title. See page 17 for zip code break down table.

REPORTING SYMPTOMS AMONG PERSONS WITH COVID-19 IN FULTON

People with COVID-19 have reported a wide range of symptoms ranging from mild symptoms to severe illness. Symptoms may appear 2-14 days after exposure to the virus. Symptoms reported include: cough, shortness of breath/difficulty breathing, fever, chills, muscle pain, headache, sore throat, congestion, nausea or vomiting, diarrhea, congestion, runny nose, or new loss of taste or smell – Centers for Disease Control and Prevention (CDC) <https://www.cdc.gov/coronavirus/2019-ncov/symptoms-testing/symptoms.html>

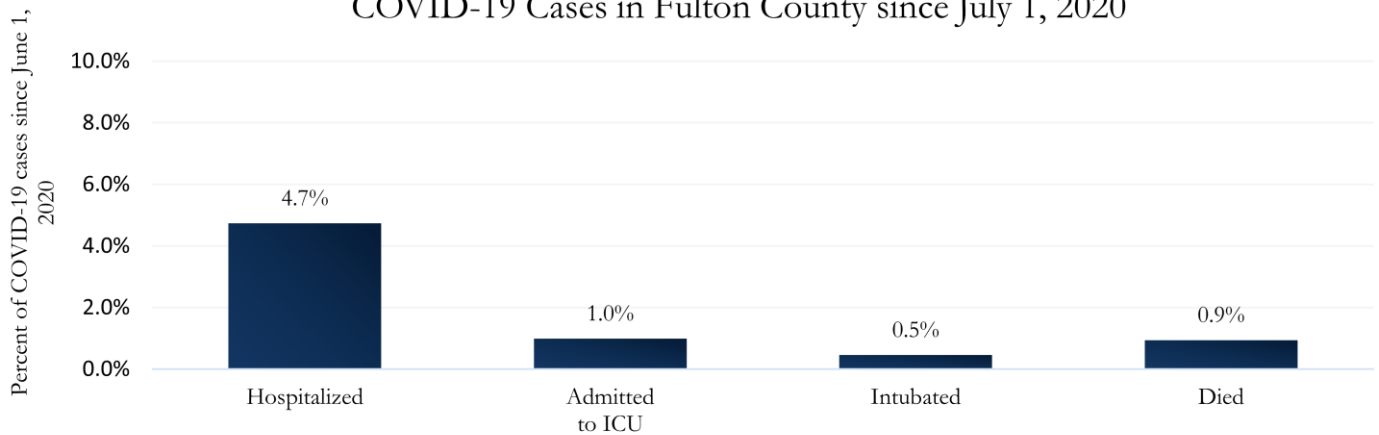
Fig. 7a & b. Total Proportion Reporting Symptoms in Fulton County



COVID-19 cases who have been case interviewed or had medical charts reviewed as of 1/8/21 only. n = 32,841

COVID-19 HOSPITALIZATIONS, ICU ADMISSIONS AND DEATHS IN FULTON

Fig. 8. Hospitalizations, ICU Admissions, Intubations, and Deaths among COVID-19 Cases in Fulton County since July 1, 2020



DEMOGRAPHIC DISTRIBUTIONS – COVID-19 CASES AND DEATHS

A. Distribution of COVID-19 cases by gender, age, and race in Fulton County by Fulton Region

	North Fulton Cities ¹ Count (%)	Atlanta Count (%)	South Fulton Cities ² Count (%)	Unknown City Count (%)	All Fulton Count (%)
Total COVID-19 cases	18289	23547	10498	2725	55059
Gender: Female	9507 (52%)	11873 (50%)	6017 (57%)	1365 (50%)	28762 (52%)
Male	8639 (47%)	11431 (49%)	4416 (42%)	1277 (47%)	25763 (47%)
Unknown*	143 (1%)	243 (1%)	65 (1%)	83 (3%)	534 (1%)
Age: 0-9	701 (4%)	540 (2%)	375 (4%)	75 (3%)	1691 (3%)
10-19	2491 (14%)	1722 (7%)	830 (8%)	198 (7%)	5241 (10%)
20-29	3687 (20%)	6822 (29%)	1912 (18%)	664 (24%)	13085 (24%)
30-39	2802 (15%)	5233 (22%)	2137 (20%)	566 (21%)	10738 (20%)
40-49	2902 (16%)	3162 (13%)	1913 (18%)	429 (16%)	8406 (15%)
50-59	2862 (16%)	2572 (11%)	1531 (15%)	366 (13%)	7331 (13%)
60-69	1499 (8%)	1697 (7%)	958 (9%)	221 (8%)	4375 (8%)
≥70	1335 (7%)	1735 (7%)	831 (8%)	194 (7%)	4095 (7%)
Unknown*	10 (0%)	64 (0%)	11 (0%)	12 (0%)	97 (0%)
Race: Asian, NH	991 (5%)	462 (2%)	52 (0%)	71 (3%)	1576 (3%)
Black, NH	1946 (11%)	9881 (42%)	7552 (72%)	945 (35%)	20324 (37%)
White, NH	8274 (45%)	6839 (29%)	599 (6%)	703 (26%)	16415 (30%)
Hispanic	2929 (16%)	1438 (6%)	837 (8%)	260 (10%)	5464 (10%)
Other, NH	1000 (5%)	1031 (4%)	274 (3%)	125 (5%)	2430 (4%)
Unknown*	3149 (17%)	3896 (17%)	1184 (11%)	621 (23%)	8850 (16%)

*Unknown includes cases not yet interviewed.

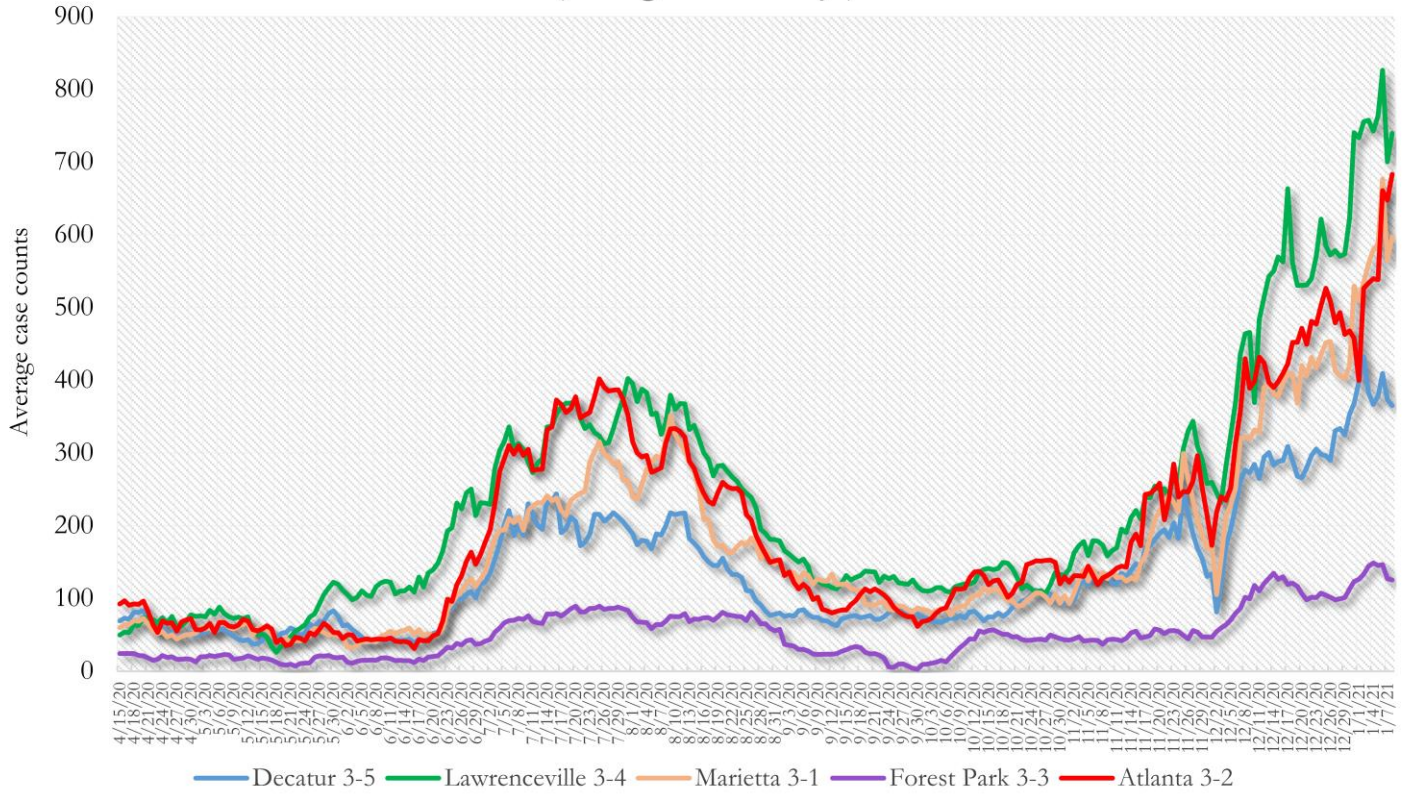
B. Distribution of COVID-19 deaths by gender, age, and race in Fulton County by Fulton Region

	North Fulton Cities ¹ Count (%)	Atlanta Count (%)	South Fulton Cities ² Count (%)	Unknown City Count (%)	All Fulton Count (%)
Total COVID-19 deaths	165	362	204	28	759
Gender: Female	77 (47%)	166 (46%)	100 (49%)	11 (39%)	354 (47%)
Male	88 (53%)	196 (54%)	104 (51%)	17 (61%)	405 (53%)
Unknown	0	0	0	0	0
Age: ≤ 29	<10	<10	<10	0	<10
30-39	<10	<10	<10	<10	14 (2%)
40-49	<10	<10	11 (5%)	<10	28 (4%)
50-59	<10	30 (8%)	25 (12%)	<10	66 (9%)
60-69	20 (12%)	68 (19%)	45 (22%)	<10	136 (18%)
≥70	130 (79%)	244 (67%)	118 (58%)	18 (64%)	510 (67%)
Unknown	0	0	0	0	0
Race: Asian, NH	<10	<10	<10	<10	12 (2%)
Black, NH	28 (17%)	289 (80%)	167 (82%)	11 (39%)	495 (65%)
White, NH	118 (72%)	61 (17%)	27 (13%)	14 (50%)	220 (29%)
Hispanic	15 (9%)	<10	<10	<10	29 (4%)
Other, NH	0	<10	<10	0	<10
Unknown	0	<10	0	0	<10

¹Includes all Fulton County cities north of Atlanta (Alpharetta, Johns Creek, Milton, Mountain Park, Roswell, Sandy Springs) ²Includes all cities south of Atlanta (College Park, Chattahoochee Hills, East Point, Fairburn, Hapeville, Palmetto, South Fulton, Union City). **Note:** All data reported are preliminary and subject to change. This table includes data on only confirmed COVID-19 deaths and is subject to change as GA DPH completes cause of death confirmation processes.

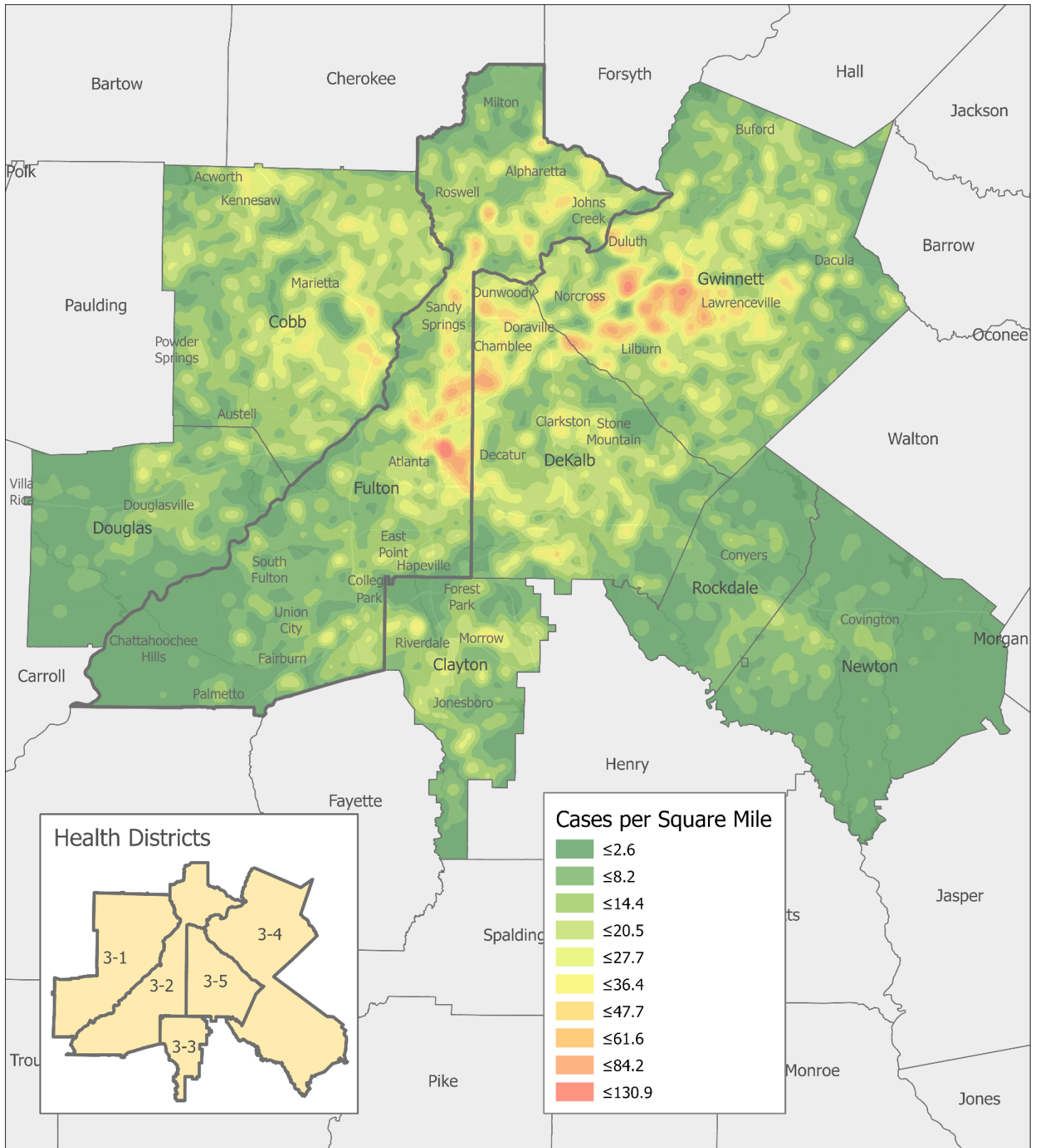
COVID-19 CASE TRENDS IN FULTON AND SURROUNDING DISTRICTS

**Fig. 9. Daily Case Counts for Atlanta Metro Districts
(Averaged over 7 days)**



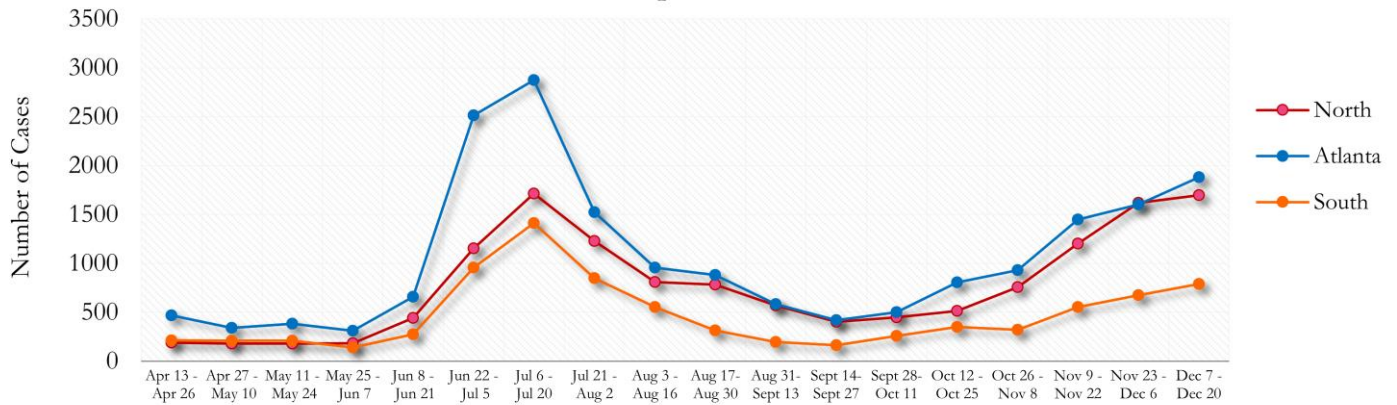
*Graph shows the average number of cases calculated from the daily cumulative case counts in the metro Atlanta districts. Increases in daily cumulative case counts may include cases diagnosed earlier during the pandemic but were only recently reported to the state as cases diagnosed belonging to these districts. Delays in data reporting may cause the trend line to appear as decreasing.

Fig. 10. COVID-19 Cases in Fulton County and Surrounding Districts (Dec 19, 2020– Jan 1, 2021)



TRENDS IN COVID-19 CASES AMONG DEMOGRAPHIC GROUPS (14 DAY PERIODS)

Fig. 11. Trends in Geographic distribution of COVID-19 Cases in Fulton County by 14-day periods



*North - Includes all Fulton cities north of Atlanta (Alpharetta, Johns Creek, Milton, Mountain Park, Roswell, Sandy Springs)

*South - Includes all Fulton cities south of Atlanta (College Park, Chattahoochee Hills, East Point, Fairburn, Hapeville, Palmetto, South Fulton, and Union City)

Fig. 12. Trends in Racial Distribution of COVID-19 Cases in Fulton County by 14-day periods

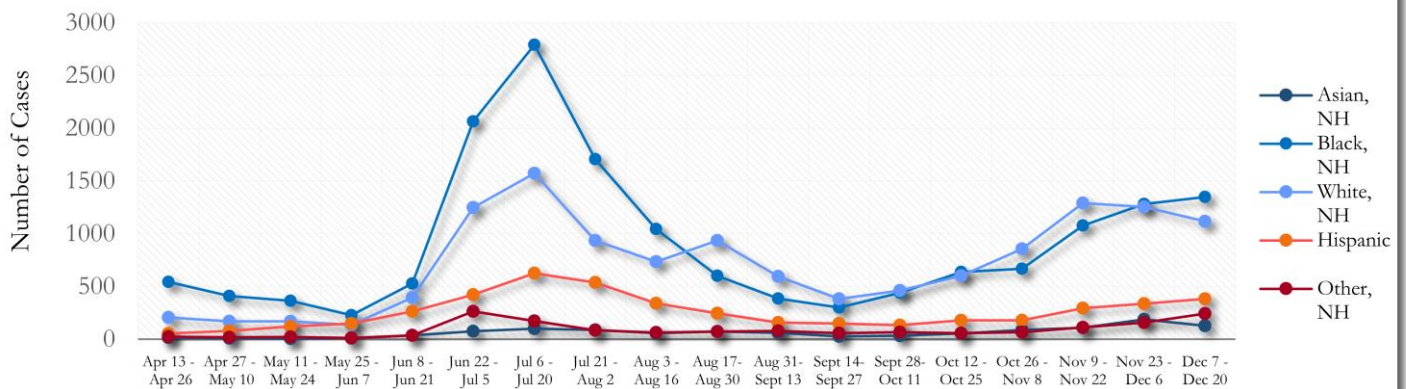
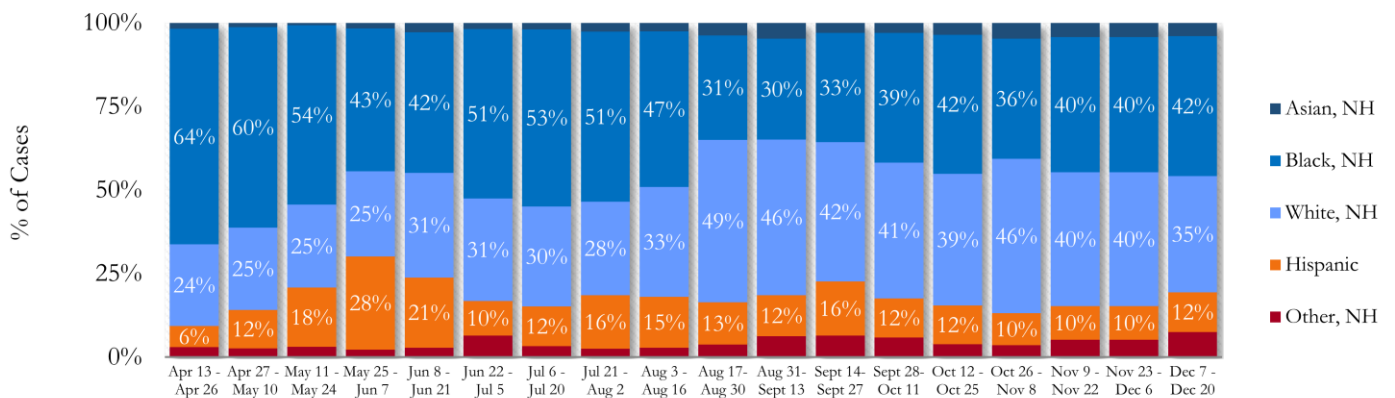


Fig. 13. Racial Distribution of COVID-19 Cases in Fulton County by 14-day periods



About 16% of COVID cases are missing data on patient race and ethnicity. The majority of new cases in the past two weeks were Black, NH (42%) and White, NH (35%).

Fig. 14. Trends in Gender Distribution of COVID-19 Cases in Fulton County by 14-day periods

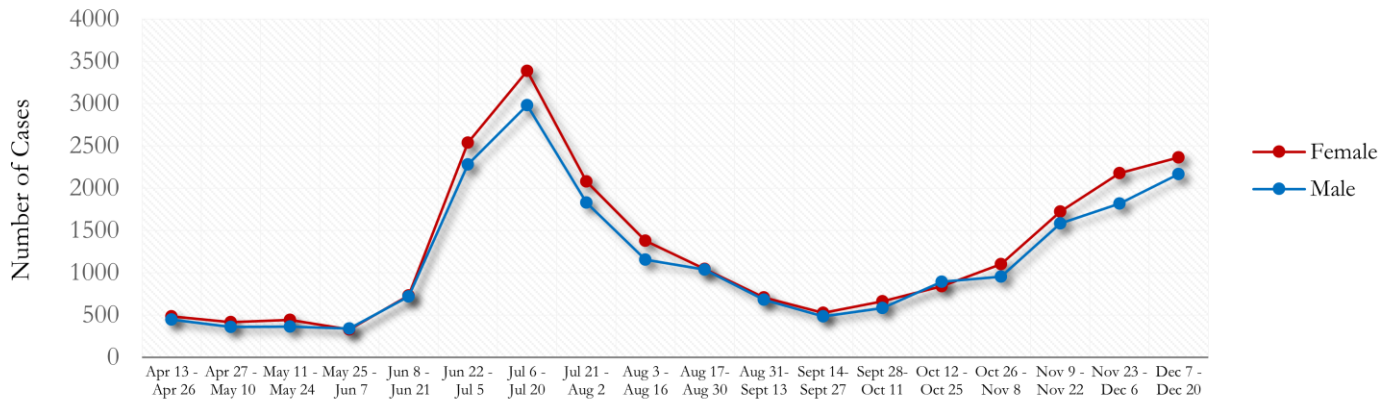
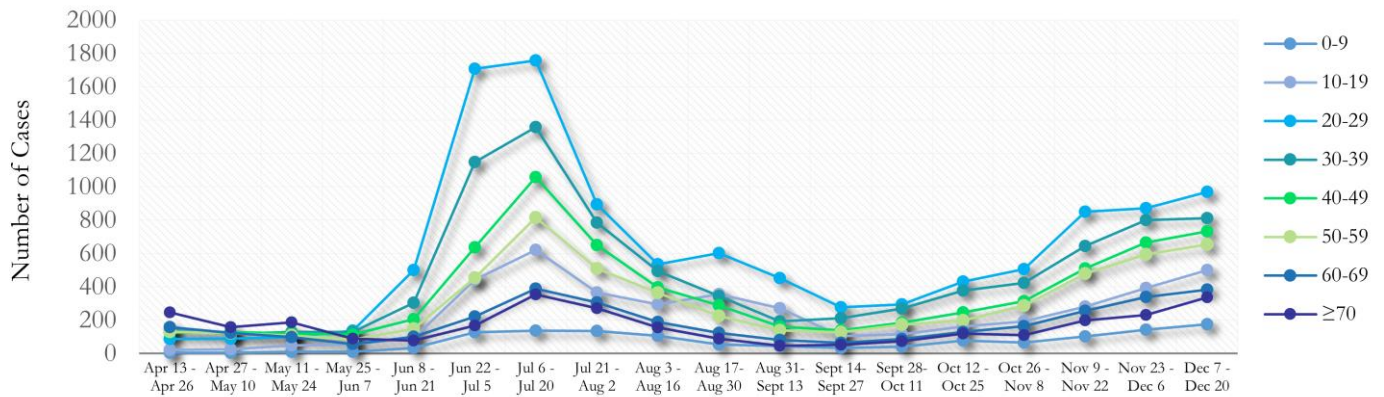
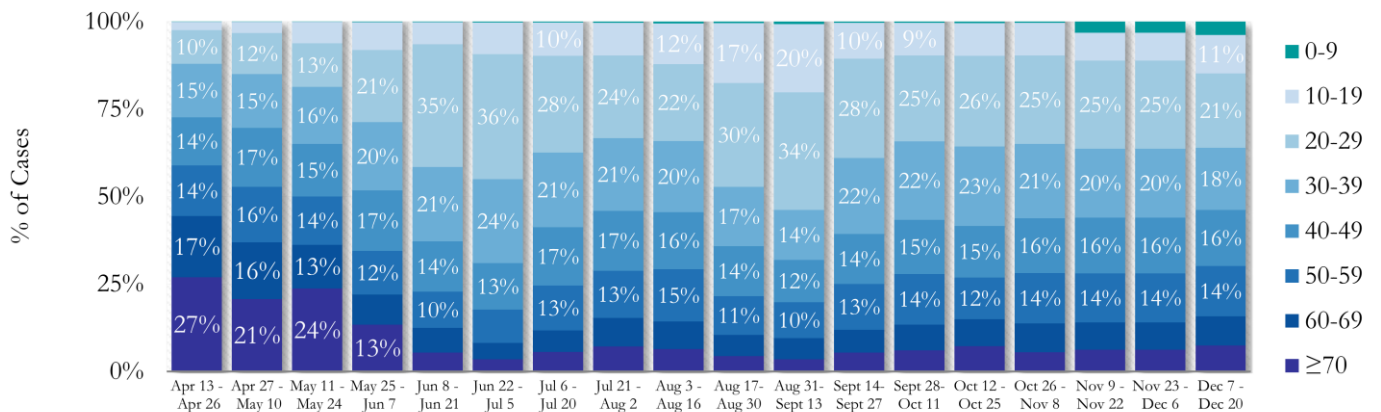


Fig. 15. Trends in Age Distribution of COVID-19 Cases in Fulton County by 14-day periods



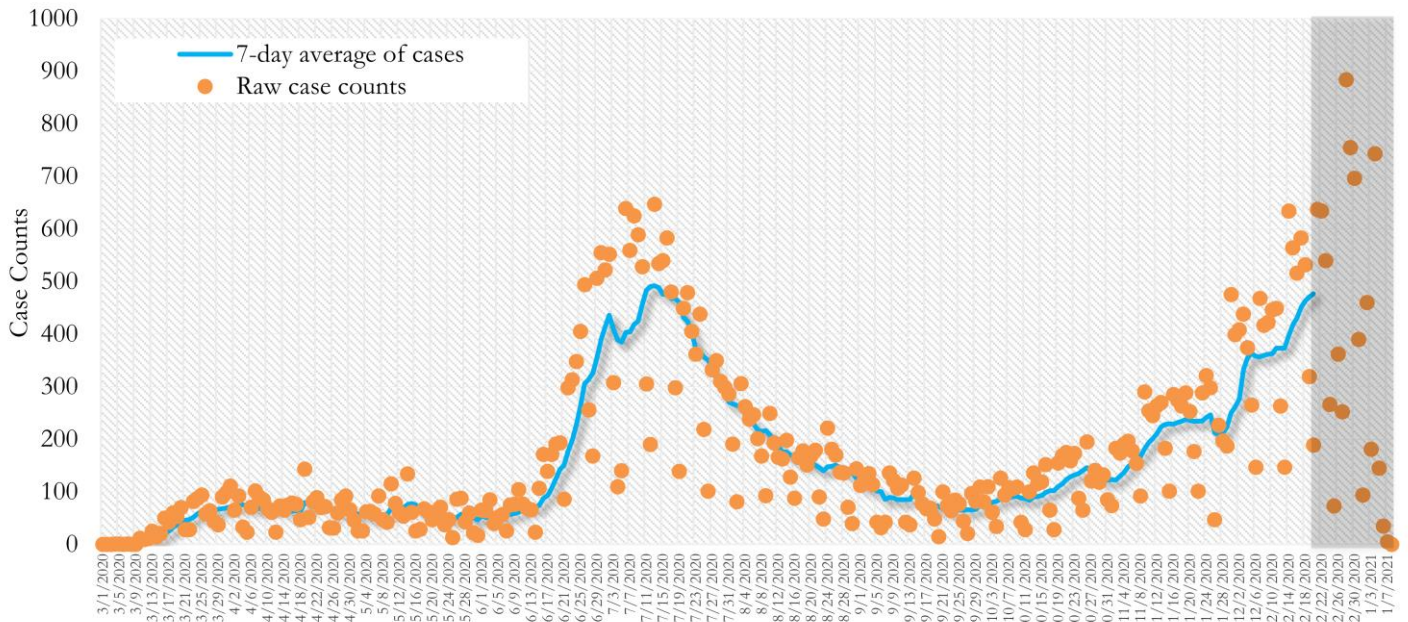
Earlier (March-May 2020) large proportions of reported cases were among persons aged 60 and older. In the most recent two weeks, 20-29 year olds accounted for the highest number of new cases among all age groups, followed by 30-39 year olds.

Fig. 16. Age Distribution of COVID-19 Cases in Fulton County by 14-day periods



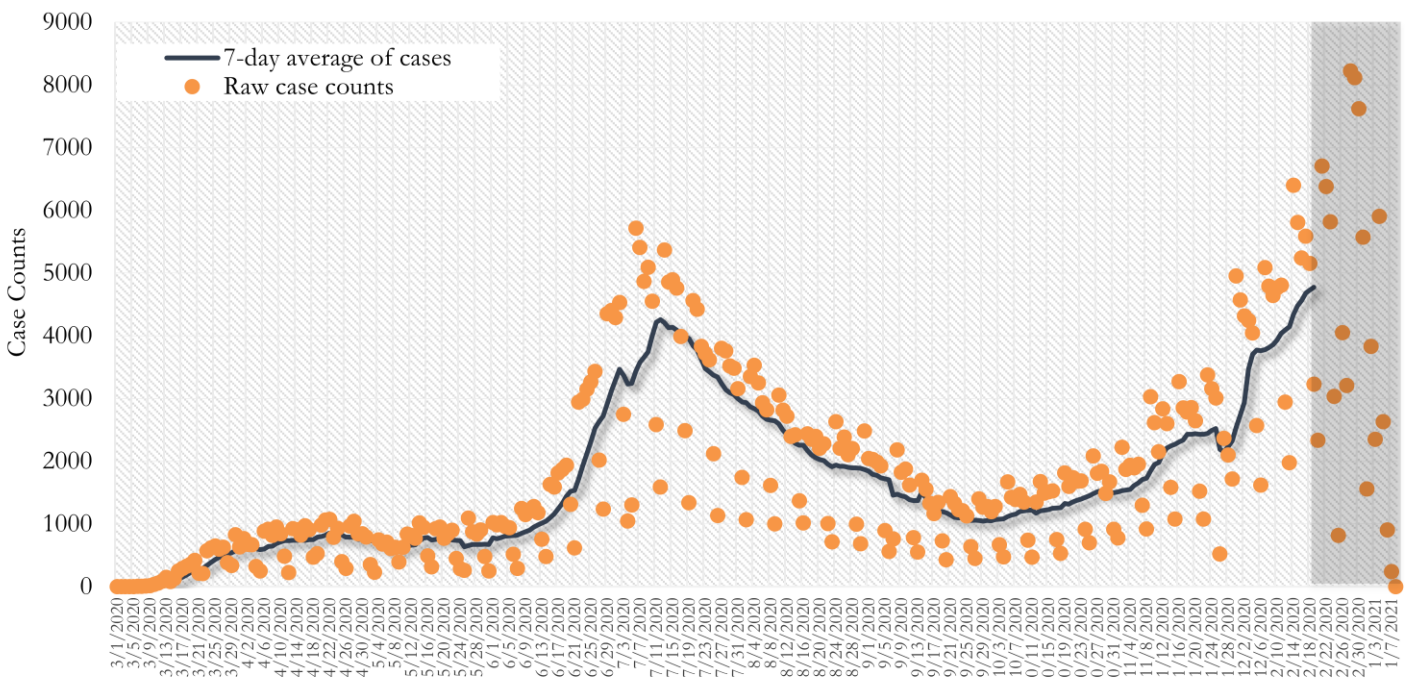
TRENDS IN COVID-19 CASES, HOSPITALIZATIONS AND DEATHS (7-DAY MOVING AVE.)

Fig. 17. New COVID-19 Cases in Fulton County Daily (Averaged over 7 days)



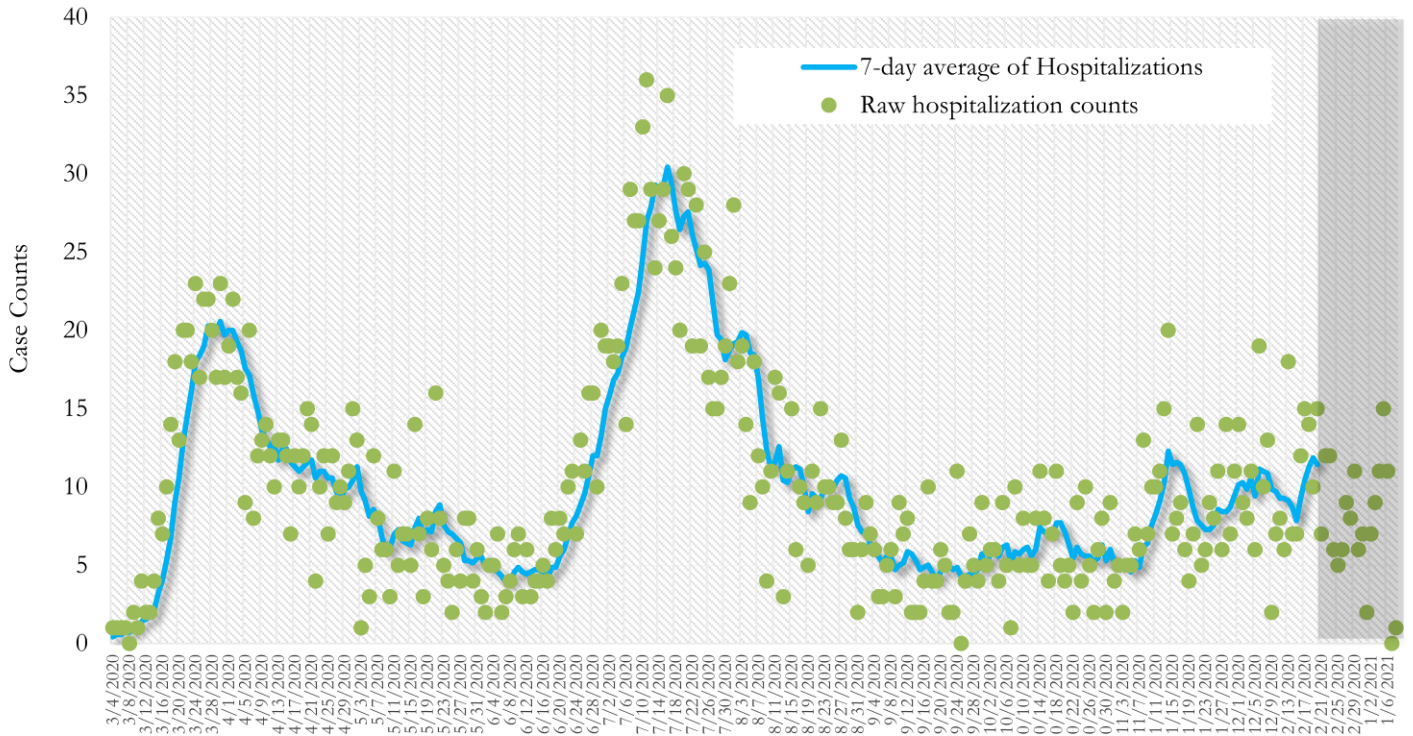
*Date of collection of first positive sample used (report creation date used where sample collection date is missing). Graph above reflects the trend in COVID-19 diagnosis. Due to the high volume of testing in recent weeks, there have been delays in reporting lab results. Thus, the trend is subject to change as more lab results get added to the state surveillance database.

Fig. 18. New COVID-19 Cases in Georgia State Daily (Averaged over 7 days)



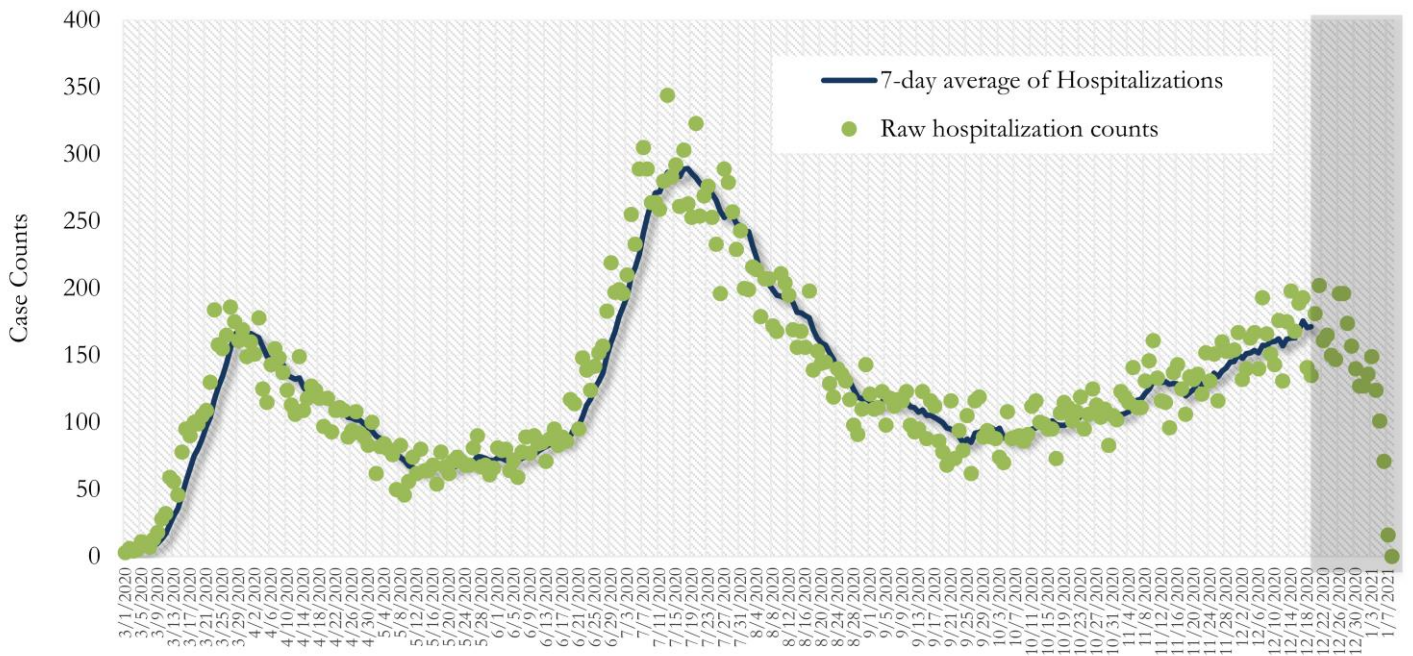
*Date of collection of first positive sample used (report creation date used where sample collection date is missing). Graph above reflects the trend in COVID-19 diagnosis. Due to the high volume of testing in recent weeks, there have been delays in reporting lab results. Thus, the trend is subject to change as more lab results get added to the state surveillance database.

Fig. 19. COVID-19 Hospitalizations in Fulton County Daily (Averaged over 7 days)



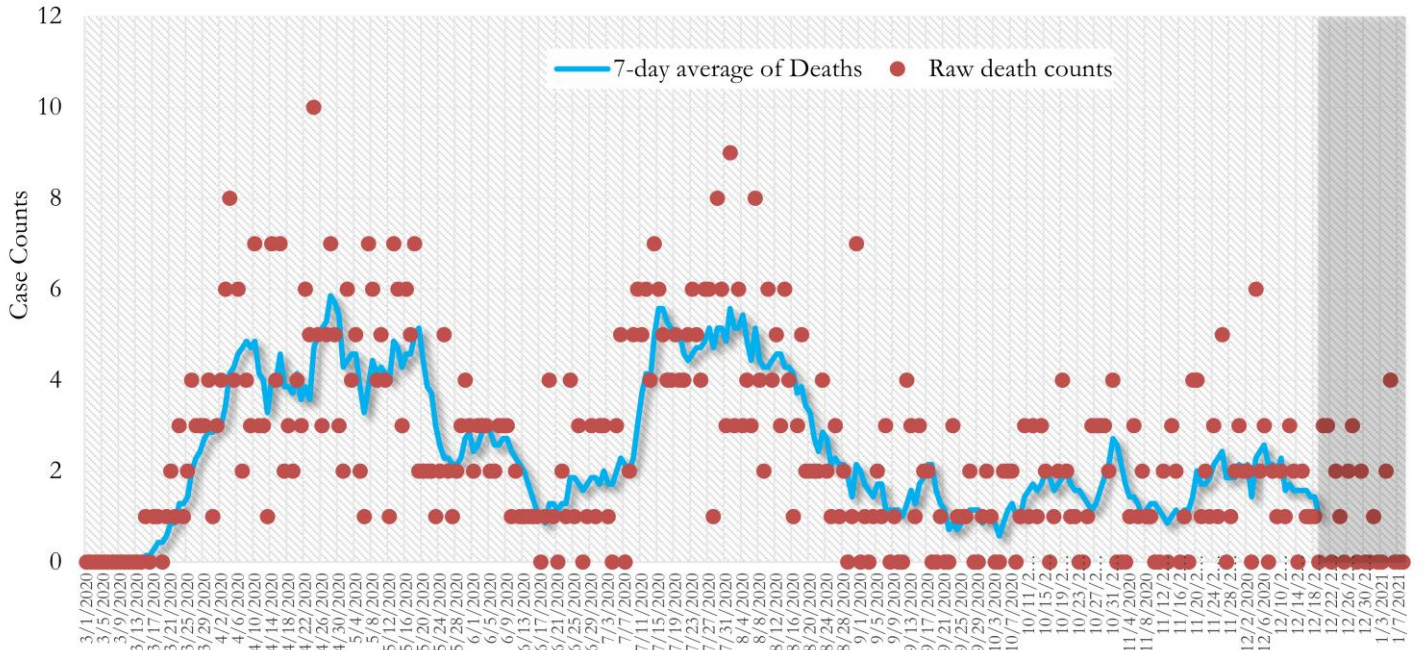
*Reported date of hospital admission used. Graph above reflects the trend in COVID-19 hospitalizations. Due to the high volume of new cases being added daily, there have been delays in reporting hospitalization data. Thus, the trend is likely to change as more hospitalization data is reported in the state surveillance database.

Fig. 20. COVID-19 Hospitalizations in Georgia State Daily (Averaged over 7 days)



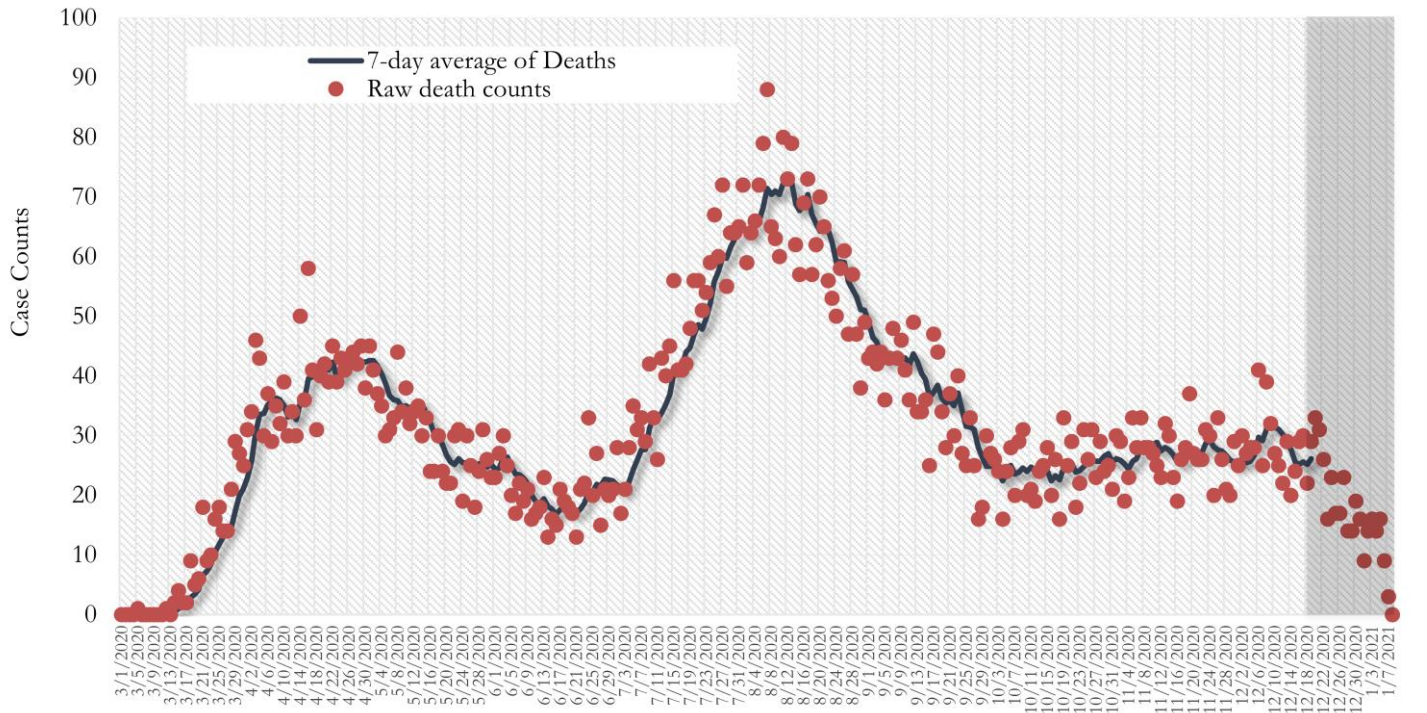
*Reported date of hospital admission used. Graph above reflects the trend in COVID-19 hospitalizations. Due to the high volume of new cases being added daily, there have been delays in reporting hospitalization data. Thus, the trend is likely to change as more hospitalization data is reported in the state surveillance database.

Fig. 21. COVID-19 Deaths in Fulton County Daily (Averaged over 7 days)



* Reported date of death used. Graph above reflects the trend in deaths attributed to COVID-19. The trend is likely to change as more data on deaths among persons with COVID-19 is reported in the state surveillance database.

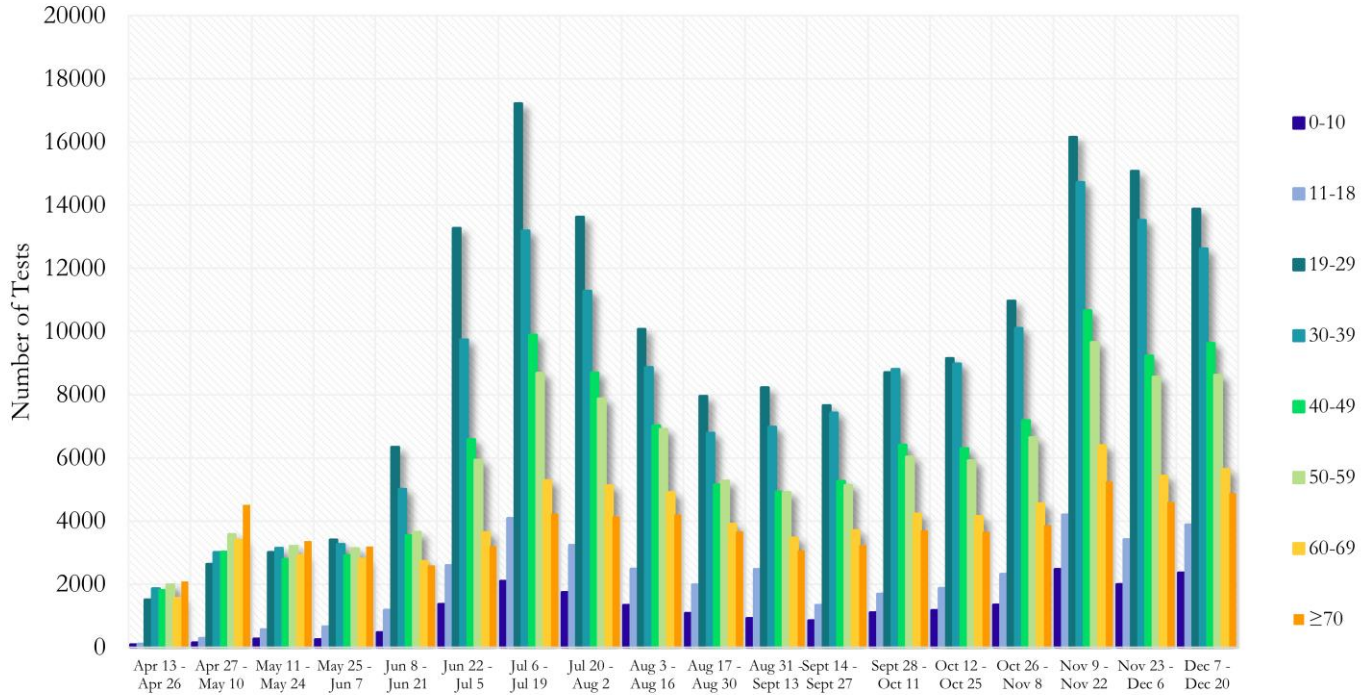
Fig. 22. COVID-19 Deaths in Georgia State Daily (Averaged over 7 days)



* Reported date of death used. Graph above reflects the trend in deaths attributed to COVID-19. The trend is likely to change as more data on deaths among persons with COVID-19 is reported in the state surveillance database.

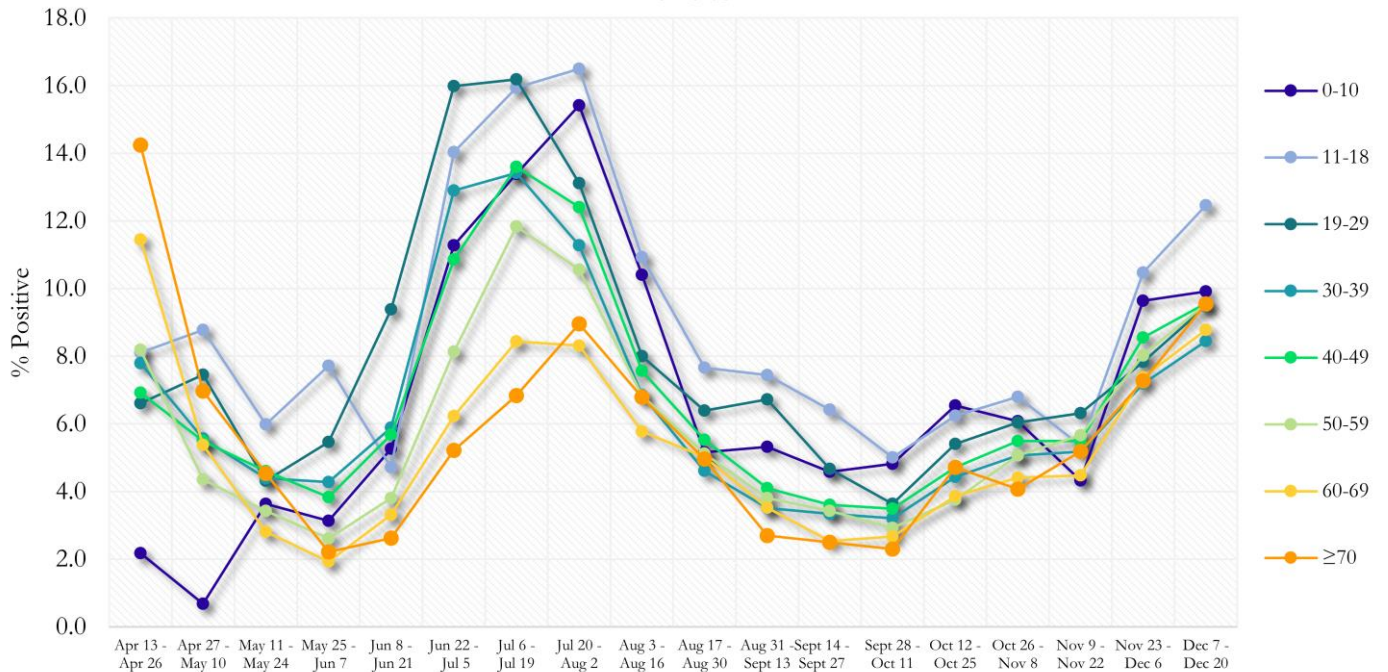
COVID-19 TESTING AND POSITIVITY IN FULTON COUNTY BY AGE AND RACE

Fig. 23. COVID-19 Tests by Age in Fulton County by 14-day Periods



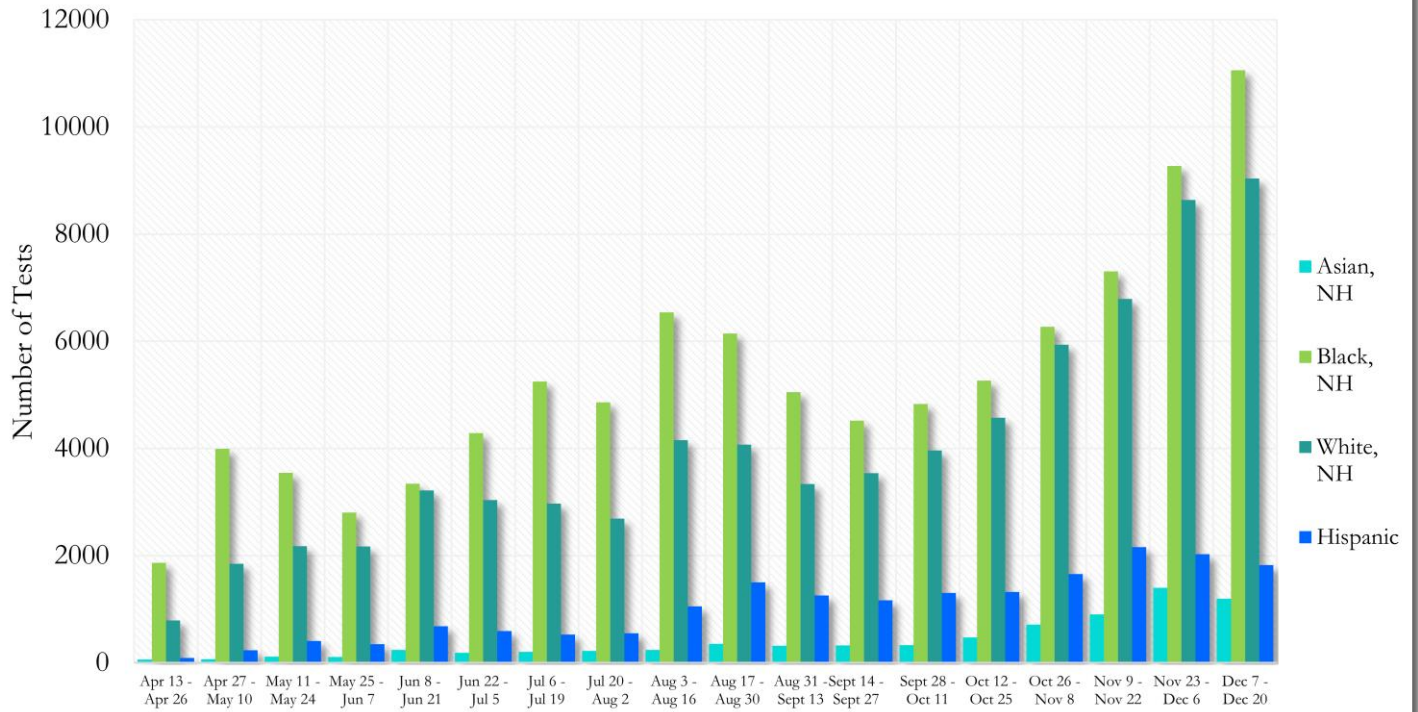
*Data on Polymerase Chain Reaction (PCR) tests only included.

Fig. 24. Percent Positive COVID-19 Tests by Age Group in Fulton County by 14-day Periods



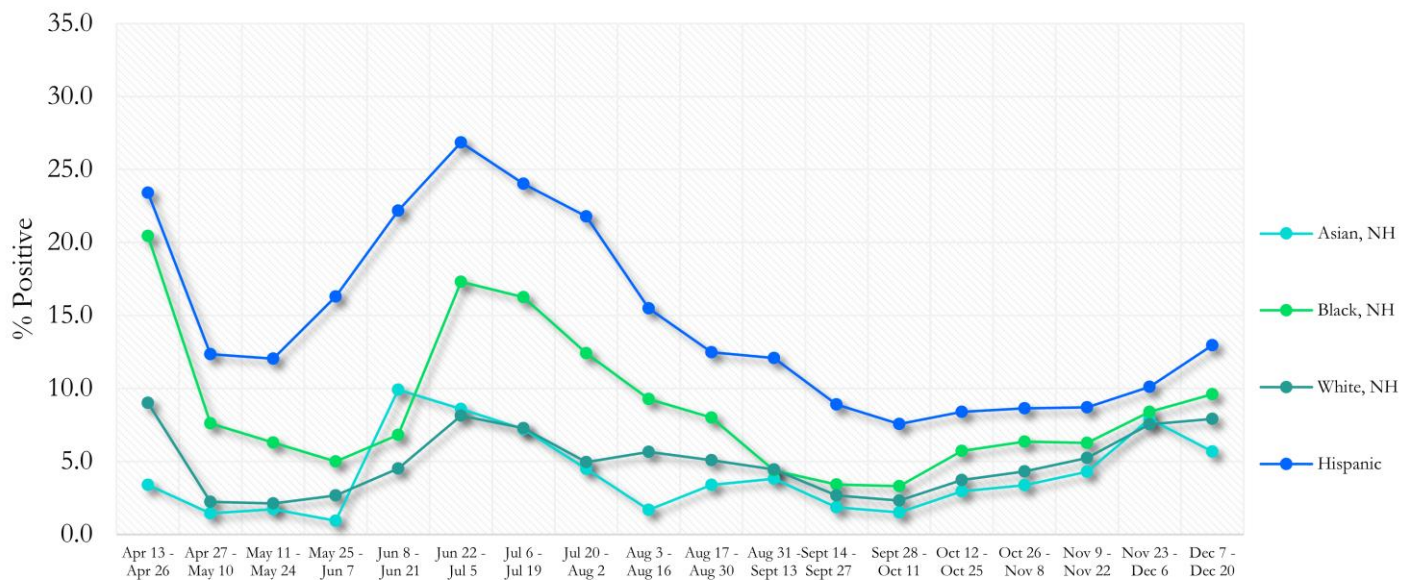
*Data on Polymerase Chain Reaction (PCR) tests only included.

Fig. 25. COVID-19 Tests by Race and Ethnicity in Fulton County by 14-day Periods



*Data on Polymerase Chain Reaction (PCR) tests only included.

Fig. 26. Percent Positive COVID-19 Tests by Race and Ethnicity in Fulton County by 14-day Periods



*Data on Polymerase Chain Reaction (PCR) tests only included.

COVID-19 CASE COUNTS BY ZIP CODE

	Prior (1/6/21)	Current Total (1/8/21)		New Cases (Period: 12/5/20 – 1/1/21) ¹		
	Count	Count	%	Recent 14 d. (Dec 19- Jan 1)	Prior 14 d. (Dec 5- Dec 18)	% change ²
All Fulton	53642	55059	100%	6685	5790	↑ 15.5%
30004	2169	2255	4.1%	357	260	↑ 37.3%
30005	1342	1386	2.5%	237	210	↑ 12.9%
30009	979	1002	1.8%	124	130	↓ 4.6%
30022	2920	3001	0.8%	482	422	↑ 14.2%
30023	15	15	<0.1%	<10	<10	-
30024	47	50	<0.1%	<10	<10	-
30075	2158	2218	4.0%	330	223	↑ 48.0%
30076	2170	2239	4.1%	325	235	↑ 38.3%
30080	<10	<10	<0.1%	0	0	-
30097	832	862	1.6%	145	124	↑ 16.9%
30098	-	-	-	0	0	-
30135	<10	<10	<0.1%	<10	0	-
30138	<10	<10	<0.1%	0	0	-
30139	-	-	-	0	0	-
30213	1991	2066	3.8%	222	199	↑ 11.6%
30268	363	380	0.7%	62	49	↑ 26.5%
30291	1356	1400	2.5%	130	140	↓ 7.1%
30296	143	150	0.3%	22	14	↑ 57.1%
30301	22	23	<0.1%	<10	<10	-
30303	526	517	0.9%	27	39	↓ 30.8%
30305	1720	1758	3.2%	241	199	↑ 21.1%
30306	741	758	1.4%	105	76	↑ 38.2%
30307	360	367	0.7%	40	34	↑ 17.6%
30308	1134	1162	2.1%	113	113	-
30309	1677	1727	3.1%	215	157	↑ 36.9%
30310	1291	1323	2.4%	139	140	↓ 0.7%
30311	1316	1339	2.4%	122	134	↓ 9.0%
30312	1498	1526	2.8%	148	150	↓ 1.3%
30313	440	444	0.8%	18	36	↓ 50.0%
30314	892	902	1.6%	87	82	↑ 6.1%
30315	1646	1689	3.1%	177	218	↓ 18.8%
30316	658	669	1.2%	92	49	↑ 87.8%
30318	3119	3186	5.8%	357	318	↑ 12.3%
30319	322	337	0.6%	49	34	↑ 44.1%
30321	15	14	<0.1%	0	0	-
30324	1600	1619	2.9%	154	124	↑ 24.2%
30326	523	533	1.0%	45	55	↓ 18.2%
30327	1344	1398	2.5%	217	173	↑ 25.4%
30328	1939	1992	3.6%	297	253	↑ 17.4%
30331	2917	3004	5.5%	324	288	↑ 12.5%
30334	14	14	<0.1%	<10	0	-
30336	132	134	0.2%	11	<10	↑ 83.3%
30337	555	578	1.0%	47	46	↑ 2.2%
30338	124	126	0.2%	<10	<10	-
30339	314	324	0.6%	32	<10	↑ 433.3%
30340	36	35	<0.1%	0	<10	↓ 100.0%
30341	36	37	<0.1%	0	<10	↓ 100.0%
30342	2237	2307	4.2%	295	248	↑ 19.0%
30344	1579	1620	2.9%	152	153	↓ 0.7%
30345	25	25	<0.1%	0	0	-

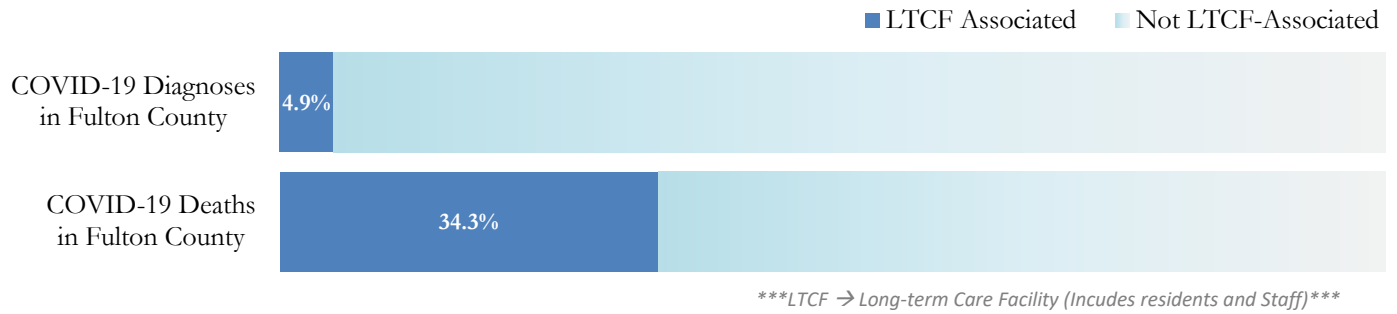
30349	3034	3092	5.6%	316	267	↑ 18.4%
30350	1502	1548	2.8%	241	204	↑ 18.1%
30354	746	759	1.4%	73	63	↑ 15.9%
30358	<10	<10	<0.1%	<10	<10	-
30363	137	143	0.3%	10	17	↓ 41.2%
30374	40	40	<0.1%	<10	<10	-
30606	<10	<10	<0.1%	0	0	-
31131	<10	<10	<0.1%	0	<10	↓ 100.0%
31150	<10	<10	<0.1%	<10	0	-
Unknown	918	938	1.7%	76	79	-

¹**New cases:** Cases diagnosed in most recent 28 days (based on reported dates of positive sample collection). To allow for lag in reporting results of new diagnoses from samples collected in the most recent week, data used for incident diagnoses analyses were moved back by one week. ²**Percent change:** These reflect the percentage increase or decrease of new diagnoses between the 14 days preceding the past 7 days and the 14 days preceding that. Changes in ZIP codes with less than 10 cases in both 2 week intervals are not reported**Data cleaning (either during case interviews or address geo-coding) may lead to reassignment of few cases from one territory to another based on their corrected addresses. These may appear as “decreases” when compared to the previous day’s count. These do not reflect errors in the data collection or analysis process but only reflect the minor day-to-day fluctuations in case counts that arise in an evolving public health database like COVID’s. **Note:** Sharp increases in territorial COVID case counts often reflect new cases diagnosed at long term care facilities located in those territories during facility-wide /mass screening events **All data reported are preliminary and subject to change.**

COVID-19 IN LONG-TERM CARE FACILITIES IN FULTON COUNTY

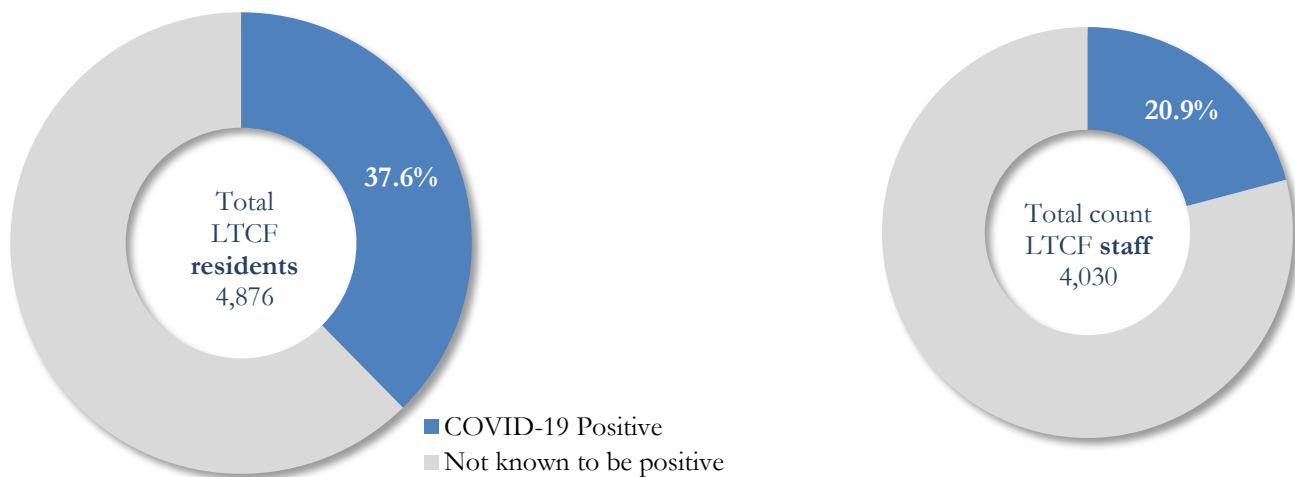
Older persons (aged 65 years and older) and persons who live in nursing homes or other long-term care facilities seem to be at higher risk for developing more serious complications from COVID-19. Extra precautions are recommended for individuals within this risk groups – Centers for Disease Control and Prevention (CDC 2020) <https://www.cdc.gov/coronavirus/2019-ncov/need-extra-precautions/people-at-higher-risk.html>

Fig. 27. COVID-19 Diagnoses and Deaths in Fulton County Associated with Long-Term Care Facilities



COVID-19 POSITIVITY:

Fig. 28. COVID-19 Positivity at 64 reporting Long-Term Care Facilities (LTCF) in Fulton County



COVID-19 Cases, Hospitalizations, and Deaths among 64 reporting Long-Term Care Facilities in Fulton County

	LTCF Residents (n=4,876)			LTCF Staff (n=4,030)		
	Cases	Hospitalizations	Deaths	Cases	Hospitalizations	Deaths
Average (count per fac.) ¹	29	5	4	13	1	<0.1
Median (count per fac.) ¹	11	3	1	9	0	0
Lowest counts	0	0	0	0	0	0
Highest counts	143	48	30	70	8	2
Total Count	1835 (37.6%) ^a	337 (18.4%) ^b	255 (13.9%) ^b	841 (20.9%) ^a	33 (3.9%) ^b	5 (<1.0%) ^b

^a Percentage shown reflects proportion of total residents/staff tested who were positive (i.e. COVID-19 Positivity). | ^b Percentages shown are proportions of persons residents/staff diagnosed with COVID-19 who were hospitalized or died after diagnoses.