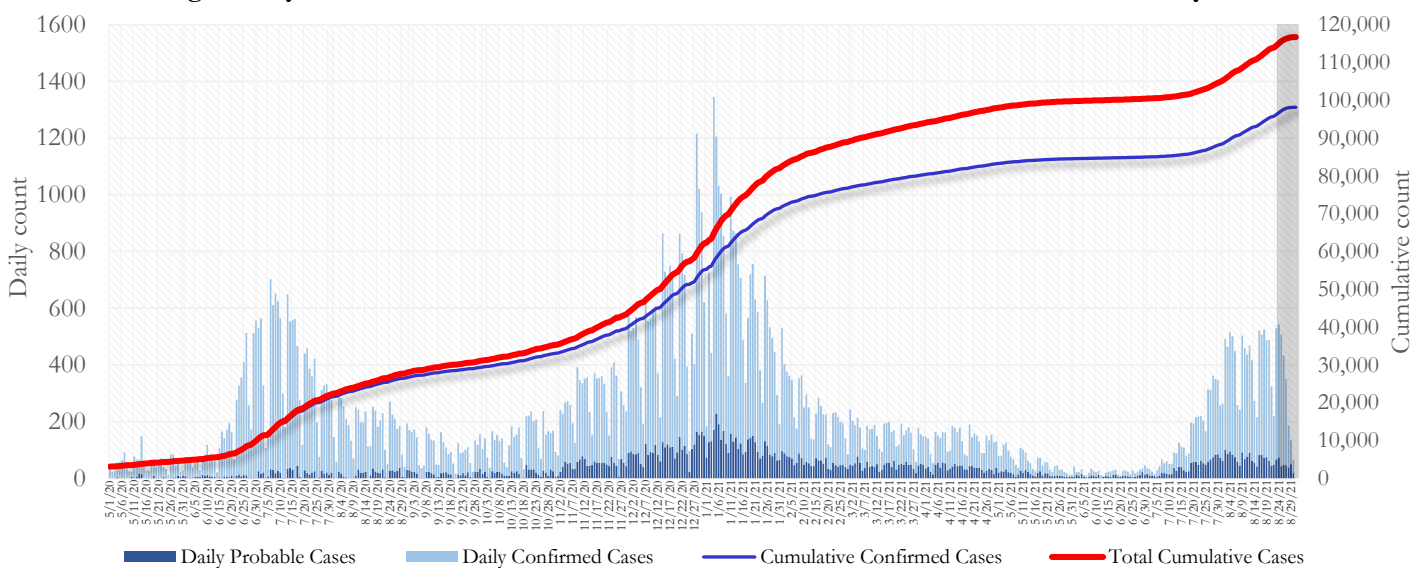


SUMMARY

- As of August 31, 2021, Fulton County has recorded **98,227 confirmed cases** and **18,569 probable cases** of COVID-19.
- Figure 1 shows both confirmed and probable case counts but the ensuing tables and figures use data from **confirmed cases only**.
- As of August 31, 2021, Fulton County has recorded **1,412 confirmed COVID-19 deaths**. 164 deaths are currently under review by GA DPH to confirm cause of death.
- By city, new confirmed COVID-19 case rates range from 307.3 per 100,000 persons (Johns Creek) to 1121.2 per 100,000 persons (Union City). [**Fulton County Diagnoses Rates (per 100,000 persons): Cumulative – 8936.4; Incidence – 492.6**]. See map showing incident case rate by ZIP code on Pg.7.
- Of all PCR testing done in Fulton County between August 16 and August 29, the **percent positivity rate was 11.7%**.

Fig 1. Daily and Cumulative Confirmed and Probable COVID-19 cases in Fulton County, GA



Counts shown reflect the number of cases as of 9:00 am on 8/31/21 using the date of first positive sample collection. Where date of sample collection was not available or missing, the date of report creation in GA SendSS was used instead. The Georgia Department of Health defines a confirmed cases as someone with a positive molecular test, also known as PCR. A probable case is defined as a positive antigen test, though probable cases are still considered positive cases and individuals who tested positive through an antigen test should follow all DPH isolation and quarantine guidance. **Note:** Delays in data reporting may cause changes in data counts, particularly in the shaded portion. Data throughout this report are preliminary and subject to ongoing data cleaning processes, and thus are subject to change.

THE FOLLOWING ANALYSES (PAGES 1-19) ARE USING DATA ON CONFIRMED CASES ONLY.

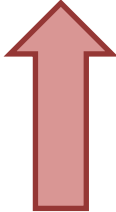
DISTRIBUTION OF COVID-19 CASES BY REGION

New cases: 43% of the new COVID-19 cases in the past 2 weeks occurred in Atlanta while 24% and 29% occurred in the Northern and Southern regions of the county respectively.

Fulton Region	% Cumulative count	% New cases*
Atlanta	43.0%	43.1%
North ¹	32.4%	24.3%
South ²	21.3%	28.9%
Unincorporated/Unknown	3.3%	3.7%

¹Includes all Fulton County cities north of Atlanta (Alpharetta, Johns Creek, Milton, Mountain Park, Roswell, Sandy Springs.) ²Includes all cities south of Atlanta (Chattahoochee Hills, College Park, East Point, Fairburn, Hapeville, Palmetto, South Fulton, and Union City) ***New cases:** Cases diagnosed in the past 2 weeks only (between 8/11/21 – 8/24/21).

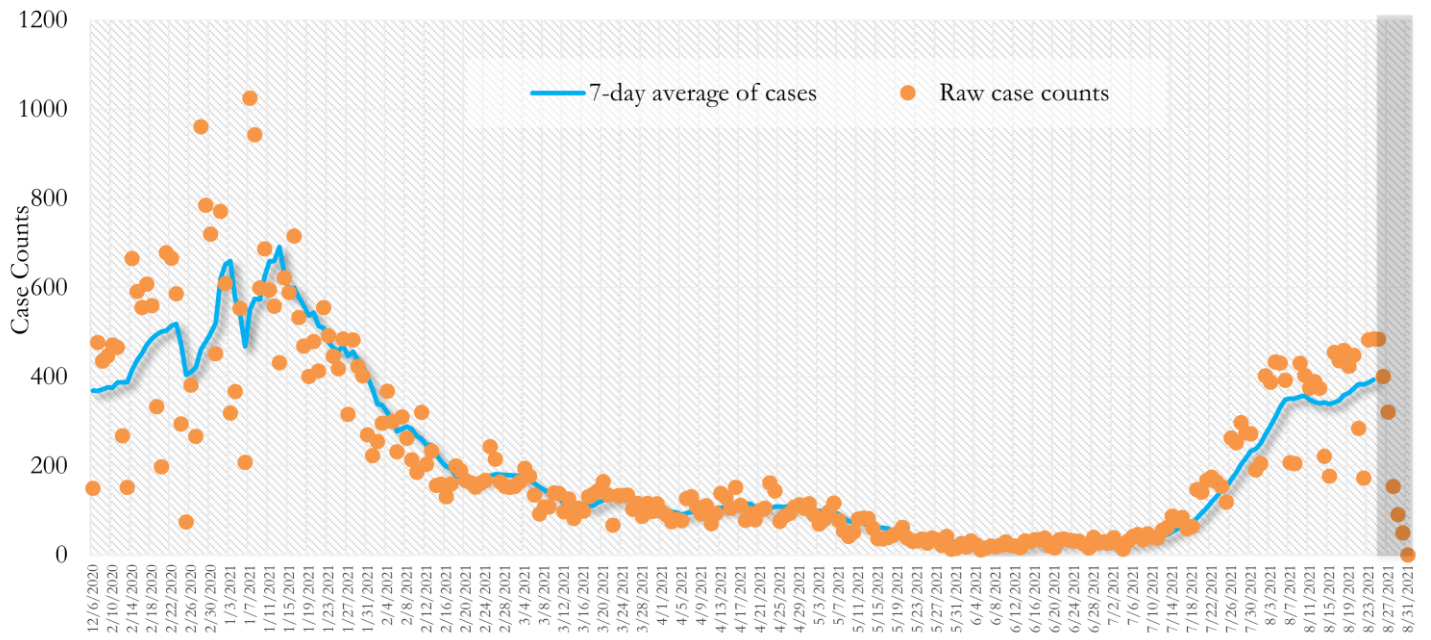
In the recent two week reporting period (8/11-8/24), there were more new cases of COVID-19 in Fulton County than the previous two weeks (7/28-8/10).



*Delayed a week to account for testing results turnaround time.

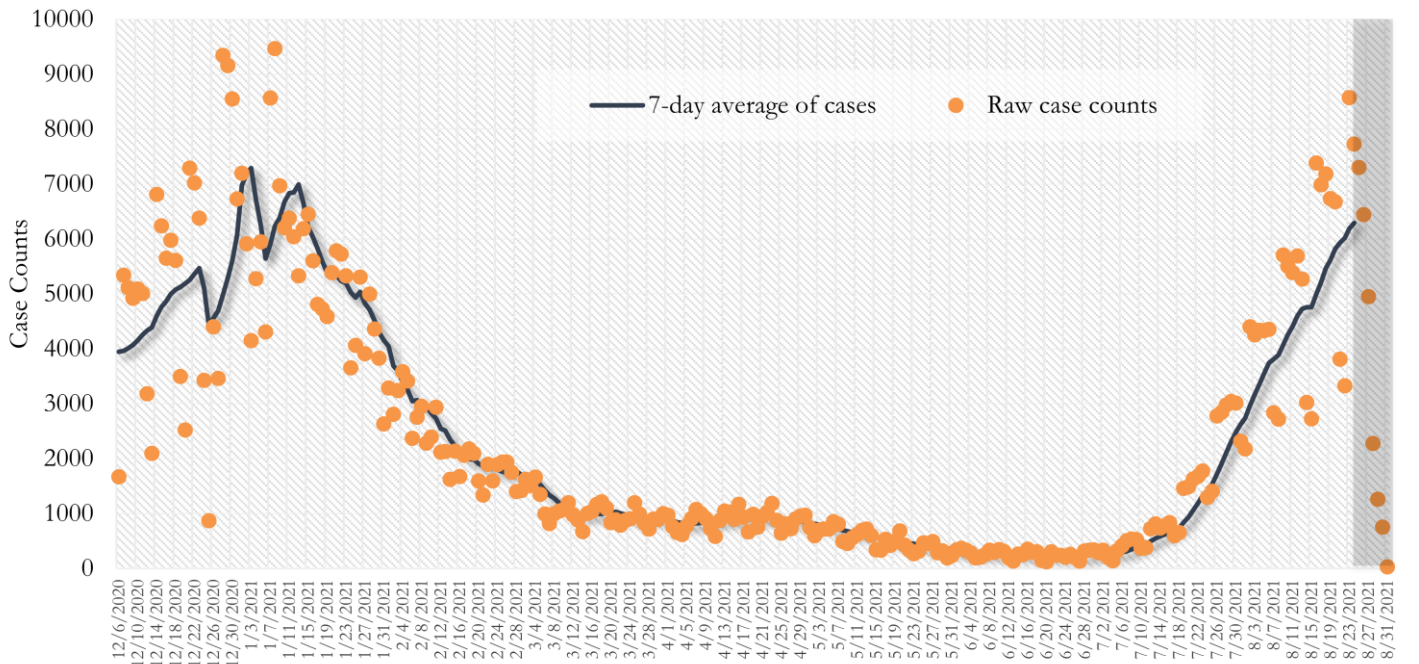
TRENDS IN COVID-19 CASES, HOSPITALIZATIONS AND DEATHS (7-DAY MOVING AVE.)

Fig. 2. New COVID-19 Cases in Fulton County Daily (Averaged over 7 days)



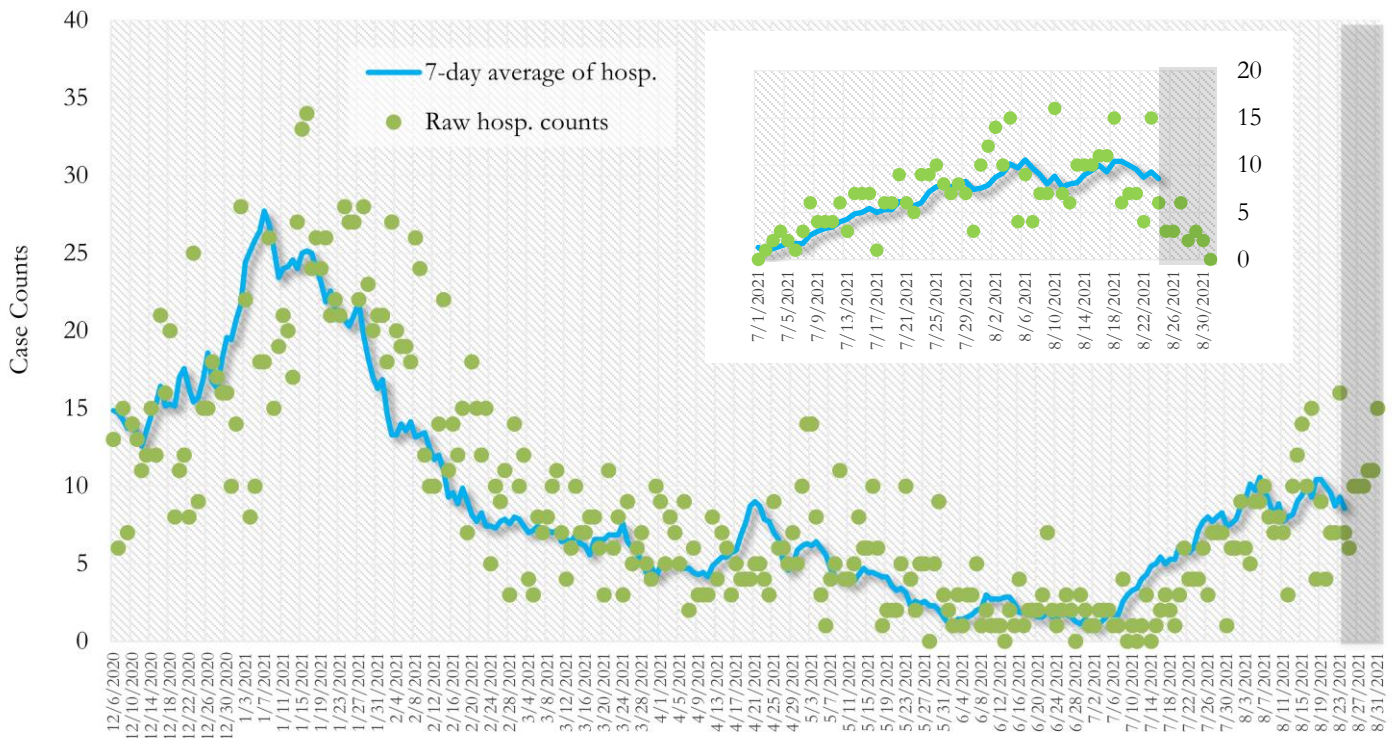
*Date of collection of first positive sample used (report creation date used where sample collection date is missing). Graph above reflects the trend in COVID-19 diagnosis. Due to the high volume of testing in recent weeks, there have been delays in reporting lab results. Thus, the trend is subject to change as more lab results get added to the state surveillance database.

Fig. 3. New COVID-19 Cases in Georgia State Daily (Averaged over 7 days)



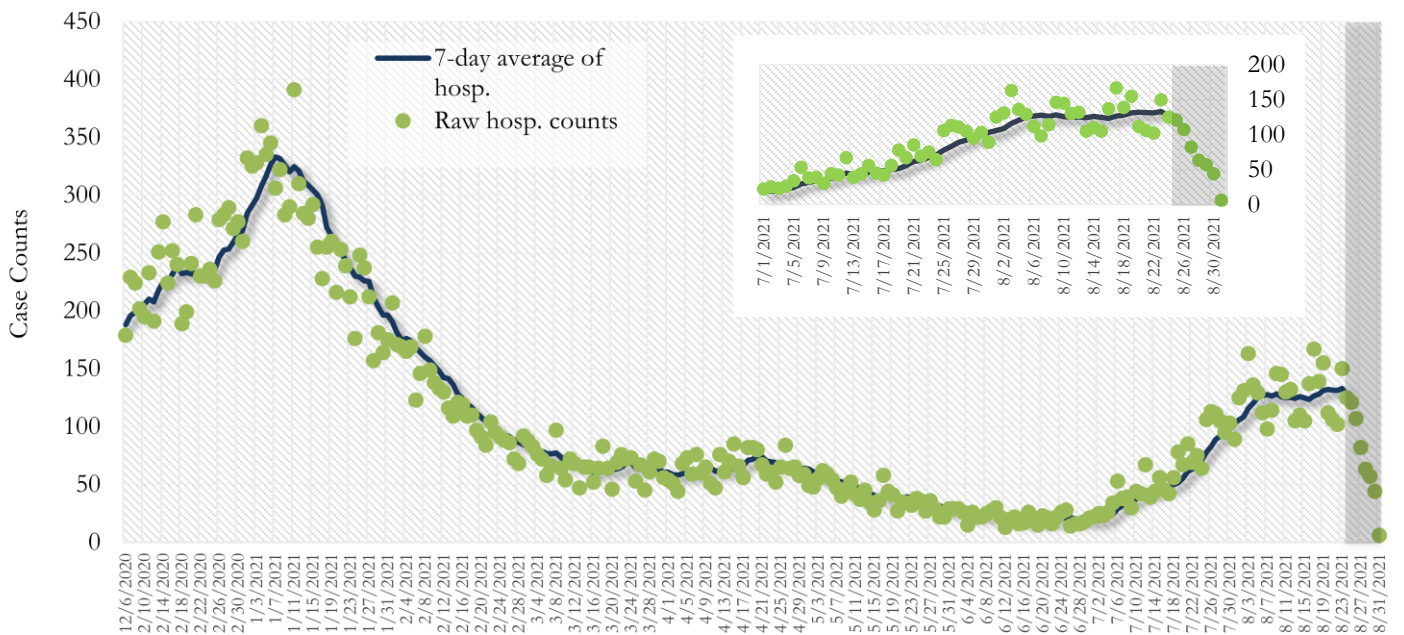
*Date of collection of first positive sample used (report creation date used where sample collection date is missing). Graph above reflects the trend in COVID-19 diagnosis. Due to the high volume of testing in recent weeks, there have been delays in reporting lab results. Thus, the trend is subject to change as more lab results get added to the state surveillance database.

Fig. 4. COVID-19 Hospitalizations in Fulton County Daily (Averaged over 7 days)



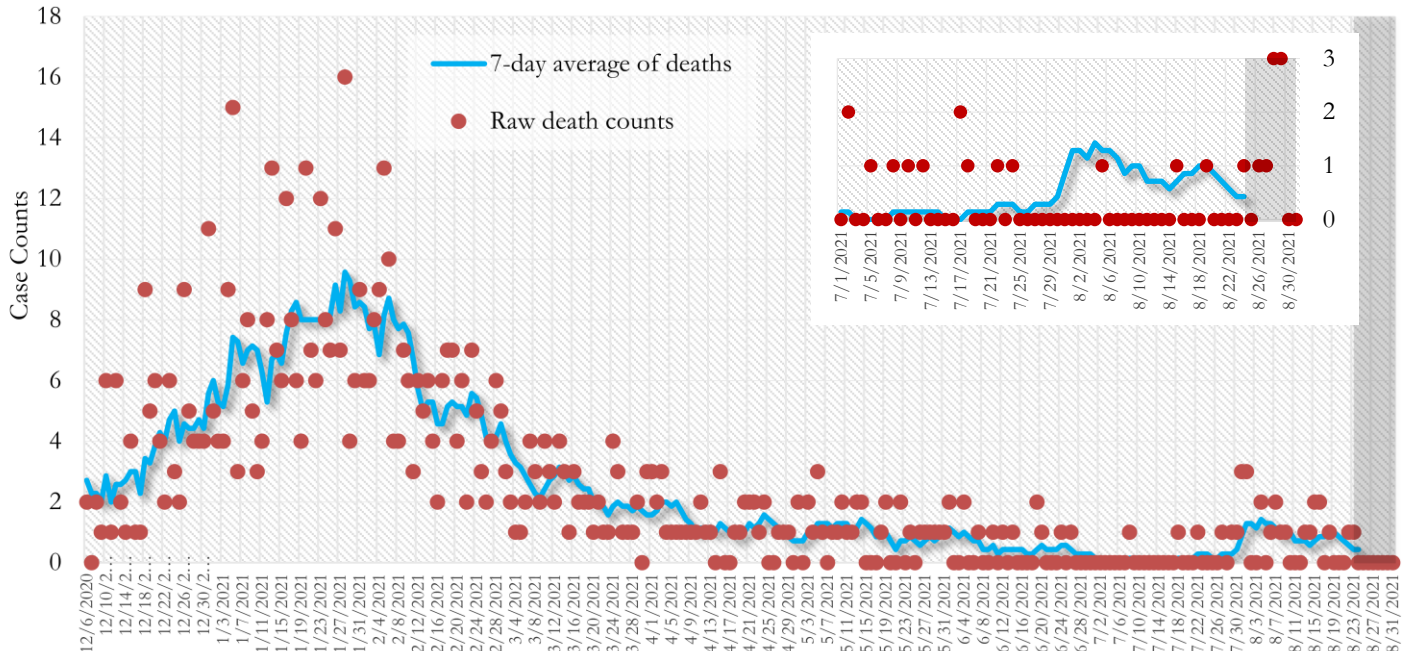
*Reported date of hospital admission used. Graph above reflects the trend in COVID-19 hospitalizations. Due to the high volume of new cases being added daily, there have been delays in reporting hospitalization data. Thus, the trend is likely to change as more hospitalization data is reported in the state surveillance database.

Fig. 5. COVID-19 Hospitalizations in Georgia State Daily (Averaged over 7 days)



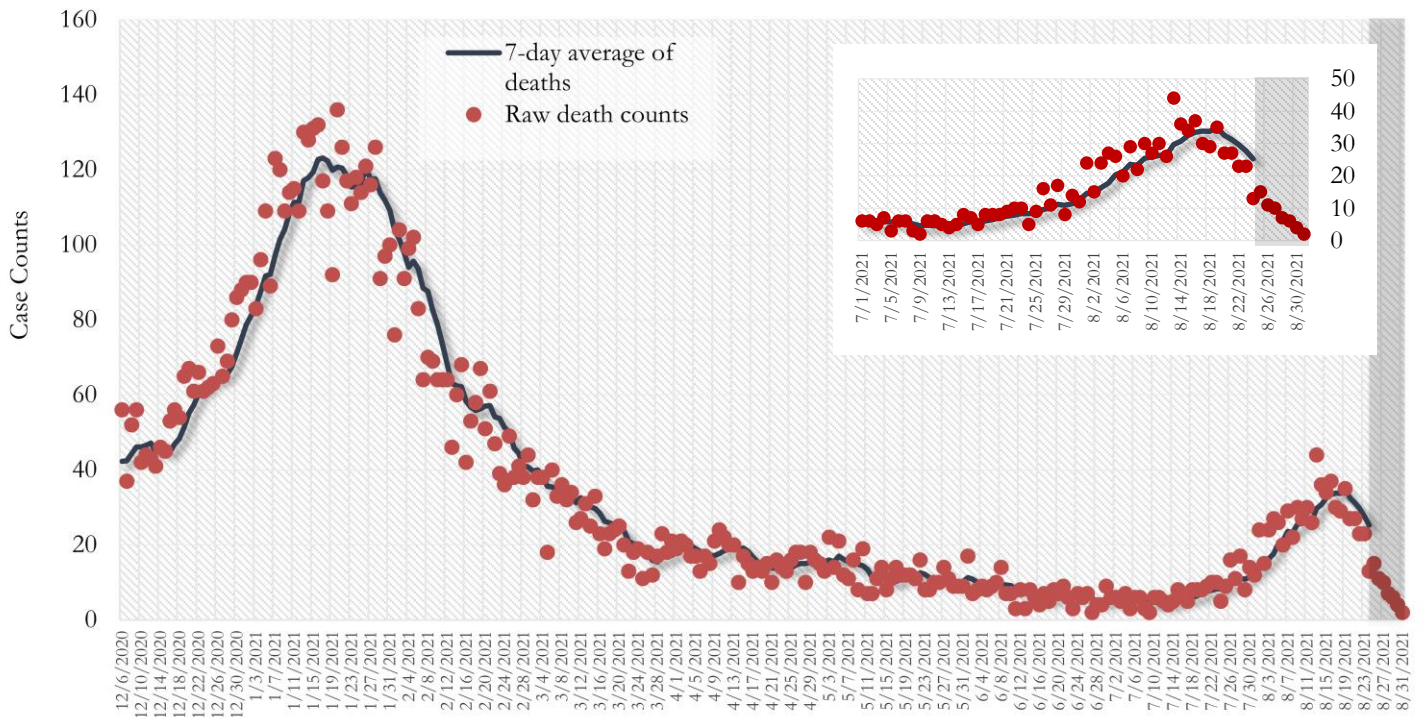
*Reported date of hospital admission used. Graph above reflects the trend in COVID-19 hospitalizations. Due to the high volume of new cases being added daily, there have been delays in reporting hospitalization data. Thus, the trend is likely to change as more hospitalization data is reported in the state surveillance database.

Fig. 6. COVID-19 Deaths in Fulton County Daily (Averaged over 7 days)



*Reported date of death used. Graph above reflects the trend in deaths attributed to COVID-19. The trend is likely to change as more data on deaths among persons with COVID-19 is reported in the state surveillance database.

Fig. 7. COVID-19 Deaths in Georgia State Daily (Averaged over 7 days)



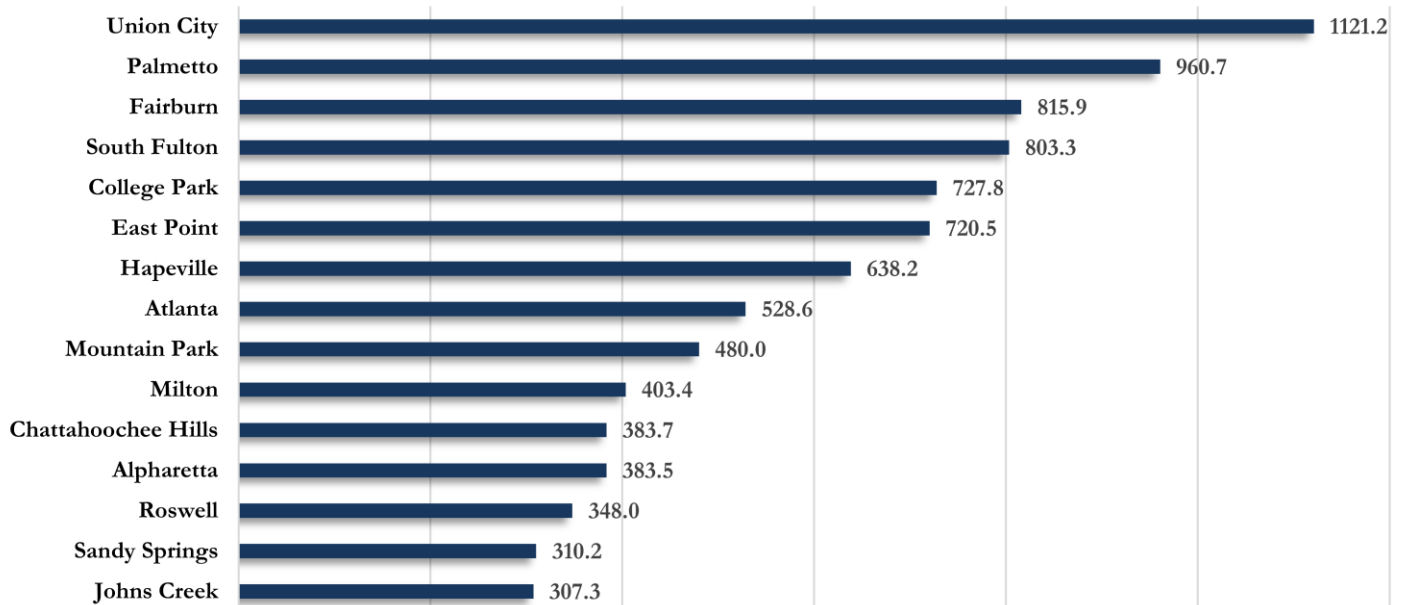
*Reported date of death used. Graph above reflects the trend in deaths attributed to COVID-19. The trend is likely to change as more data on deaths among persons with COVID-19 is reported in the state surveillance database.

COVID-19 CASE COUNTS AND RATES BY CITY

	Recent 14-day reporting period ¹	Preceding 14-day reporting period	% Change from preceding 14 days (%) ²	Incidence Rate ³
	8/11-8/24	7/28-8/10		
Alpharetta	248	163	↑ 52.1%	383.5
Atlanta	2332	1757	↑ 32.7%	528.6
Chattahoochee Hills	11	10	↑ 10.0%	383.7
College Park	101	67	↑ 50.7%	727.8
East Point	252	175	↑ 44.0%	720.5
Fairburn	120	66	↑ 81.8%	815.9
Hapeville	42	39	↑ 7.7%	638.2
Johns Creek	257	195	↑ 31.8%	307.3
Milton	154	104	↑ 48.1%	403.4
Mountain Park	<10	0	-	480.0
Palmetto	42	27	↑ 55.6%	960.7
Roswell	328	272	↑ 20.6%	348.0
Sandy Springs	327	279	↑ 17.2%	310.2
South Fulton	764	543	↑ 40.7%	803.3
Union City	235	157	↑ 49.7%	1121.2
Unknown	198	136	-	-

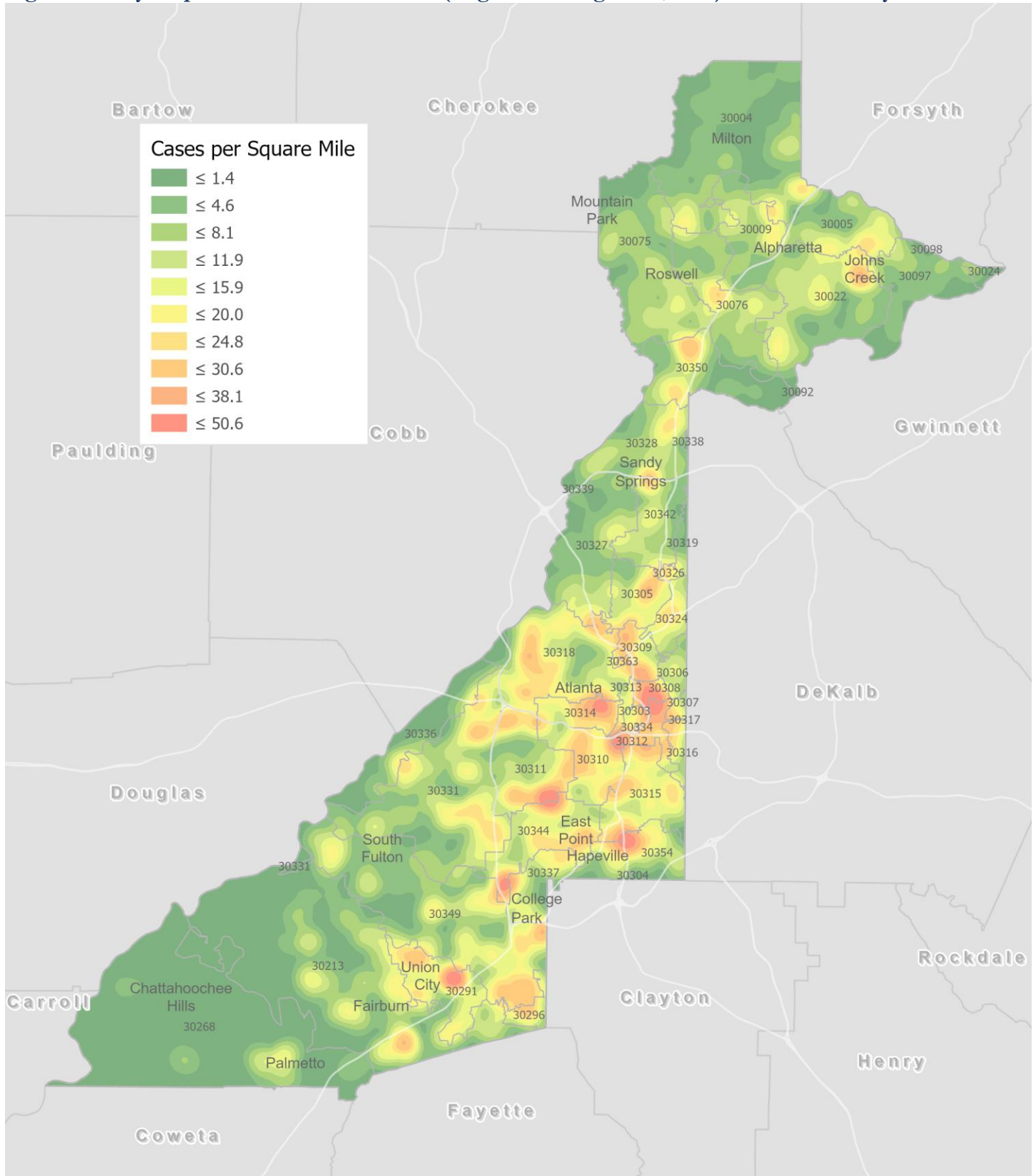
¹**New cases:** Cases diagnosed in most recent 14 days (based on reported dates of positive sample collection). To allow for lag in reporting results of new diagnoses from samples collected in the most recent week, data used for incident diagnoses analyses were moved back by one week. ²**% change:** These reflect the percentage increase or decrease in new diagnoses between the 14 days preceding the most recent 7 days and the 14 days preceding that. ³**(Incidence) Rate:** Rate of new diagnoses in the last 14 day period preceding the immediate past week. ****Data cleaning** (either during case interviews or address geo-coding) may lead to reassignment of few cases from one territory to another based on their corrected addresses. These may appear as "decreases" when compared to the previous counts. These do not reflect errors in the data collection or analysis process but only reflect the minor day-to-day fluctuations in case counts that arise in an evolving public health database like COVID's. **Note: All data reported are preliminary and subject to change.**

Fig. 8. Incidence Rates by Fulton City for Recent 14-day Reporting Period



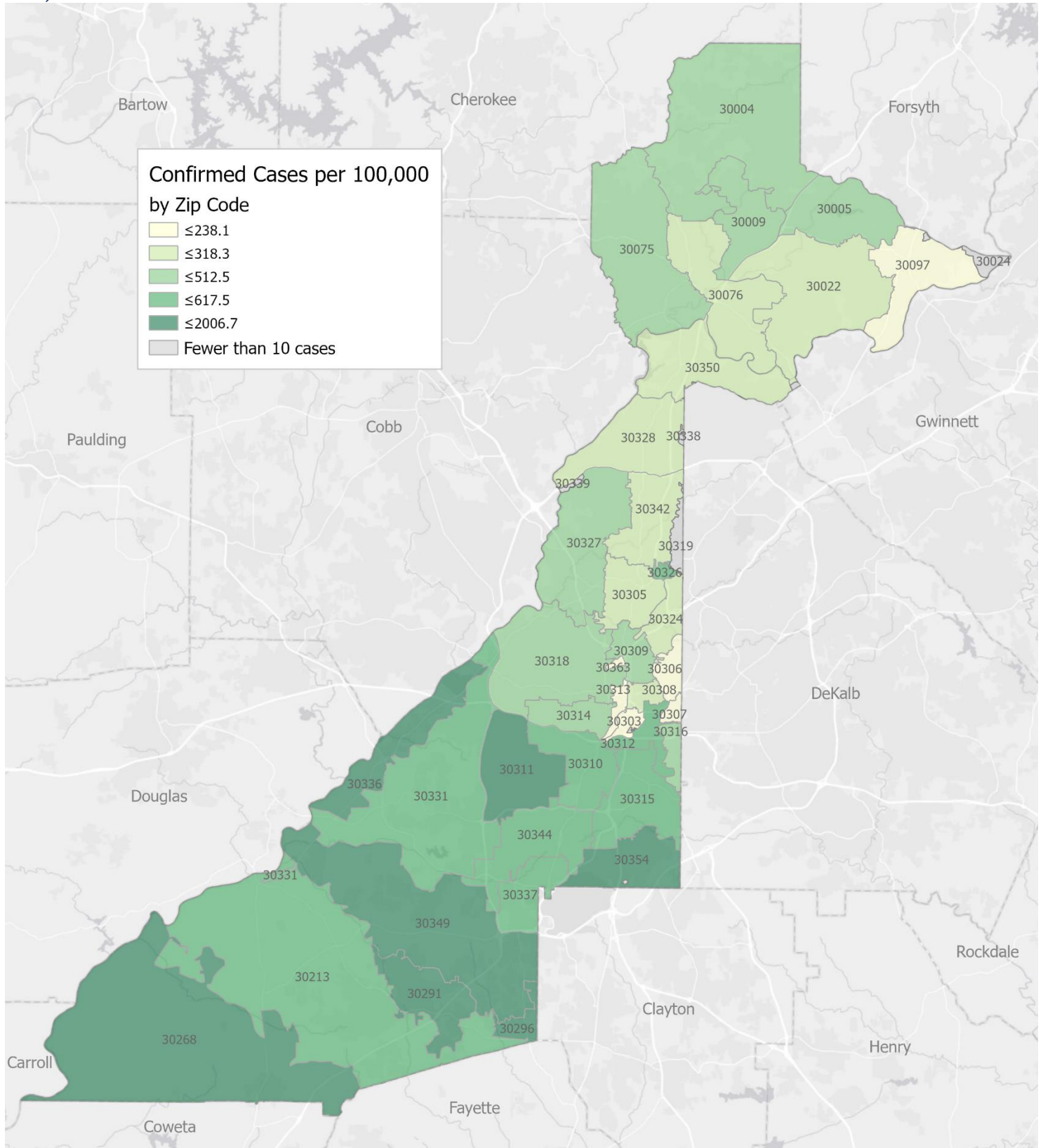
*Rates shown are per 100,000 persons | All data shown are preliminary and are subject to change as testing results get updated.

Fig. 9. Density Map – New COVID-19 Cases (August 11 – August 24, 2021) in Fulton County



New COVID-19 cases: Cases diagnosed in most recent 14 days (based on reported dates of positive sample collection). To allow for lag in reporting results of positive cases from samples collected in the immediate past 7 days, data used for incident diagnoses analyses are moved back by one week. Map reflects new COVID-19 cases diagnosed between August 11th and August 24th, 2021 across Fulton County, excluding LTCF cases.

Fig. 10. New COVID-19 Diagnoses Rates (per 100,000 population) by Zip Code (August 11 – August 24, 2021)



*Rates shown are per 100,000 populations.

New COVID-19 cases: Cases diagnosed in most recent 14 days (based on reported dates of positive sample collection). To allow for lag in reporting results of positive cases from samples collected in the immediate past 7 days, data used for incident diagnoses analyses are moved back by one week. Data used excludes outbreak-related cases at long-term care facilities and map shown reflects only the new non-LTCF cases diagnosed between the dates shown in map title. See page 8 for zip code break down table.

COVID-19 NEW CASE¹ COUNTS BY ZIP CODE

Zip Code	Recent 14-day reporting period (8/11–8/24)	Previous 14-day reporting period (7/28–8/10)	% Change between reporting periods ²
All Fulton	5415	3991	↑ 35.7%
30004	238	139	↑ 71.2%
30005	136	89	↑ 52.8%
30009	76	50	↑ 52.0%
30022	225	190	↑ 18.4%
30023	0	0	-
30024	<10	<10	-
30075	185	133	↑ 39.1%
30076	139	112	↑ 24.1%
30080	0	0	-
30097	42	33	↑ 27.3%
30098	0	0	-
30135	0	0	-
30138	0	0	-
30139	0	0	-
30213	302	205	↑ 47.3%
30268	60	40	↑ 50.0%
30291	239	159	↑ 50.3%
30296	39	15	↑ 160.0%
30301	0	<10	↓ 100.0%
30303	17	20	↓ 15.0%
30305	106	73	↑ 45.2%
30306	32	28	↑ 14.3%
30307	18	19	↓ 5.3%
30308	70	49	↑ 42.9%
30309	102	84	↑ 21.4%
30310	183	120	↑ 52.5%
30311	258	157	↑ 64.3%
30312	144	122	↑ 18.0%
30313	18	25	↓ 28.0%
30314	130	73	↑ 78.1%
30315	242	160	↑ 51.3%
30316	59	43	↑ 37.2%
30318	361	276	↑ 30.8%
30319	10	12	↓ 16.7%
30321	0	<10	↓ 100.0%
30324	68	75	↓ 9.3%
30326	28	21	↑ 33.3%
30327	105	81	↑ 29.6%
30328	118	109	↑ 8.3%
30331	399	341	↑ 17.0%
30334	<10	<10	-
30336	18	12	↑ 50.0%
30337	84	65	↑ 29.2%

Zip Code	Recent 14-day reporting period (8/11–8/24)	Previous 14-day reporting period (7/28–8/10)	% Change between reporting periods
30338	<10	<10	-
30339	29	32	↓ 9.4%
30340	0	0	-
30341	<10	<10	-
30342	111	95	↑ 16.8%
30344	226	161	↑ 40.4%
30345	<10	<10	-
30349	465	310	↑ 50.0%
30350	124	85	↑ 45.9%
30354	141	120	↑ 17.5%
30358	0	0	-
30363	11	14	↓ 21.4%
30374	<10	0	-
30606	0	0	-
31131	0	0	-
31150	0	0	-
Unknown	40	31	-

¹**New cases:** Cases diagnosed in most recent 28 days (based on reported dates of positive sample collection). To allow for lag in reporting results of new diagnoses from samples collected in the most recent week, data used for incident diagnoses analyses were moved back by one week. ²**Percent change:** These reflect the percentage increase or decrease of new diagnoses between the 14 days preceding the past 7 days and the 14 days preceding that. Changes in ZIP codes with less than 10 cases in both 2 week intervals are not reported.

COVID-19 HOSPITALIZATIONS, ICU ADMISSIONS AND DEATHS IN FULTON

Fig. 11. Fulton County Covid-19 Cases Hospitalized and Admitted to ICU by Month

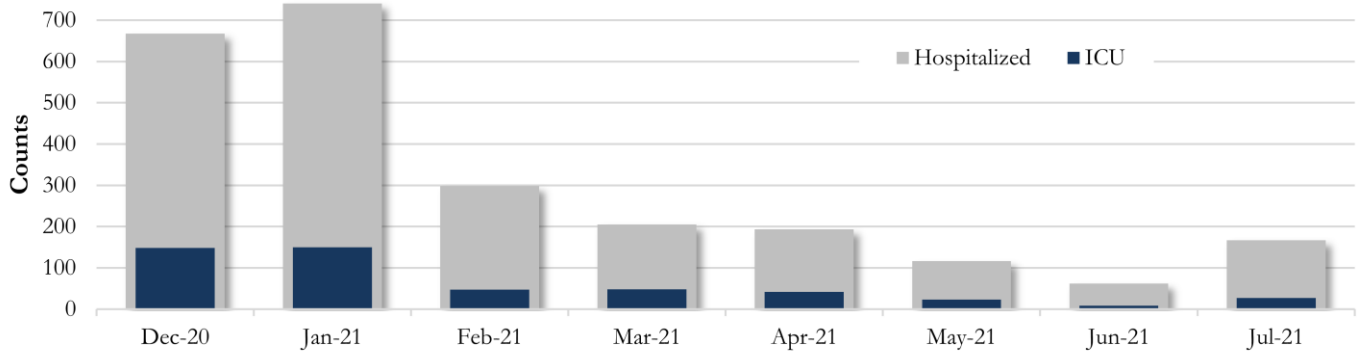
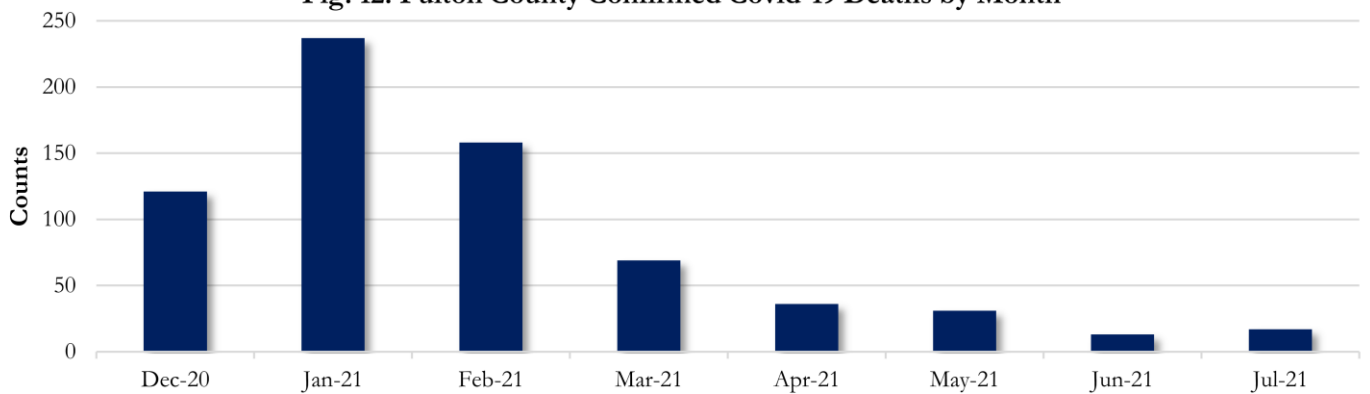
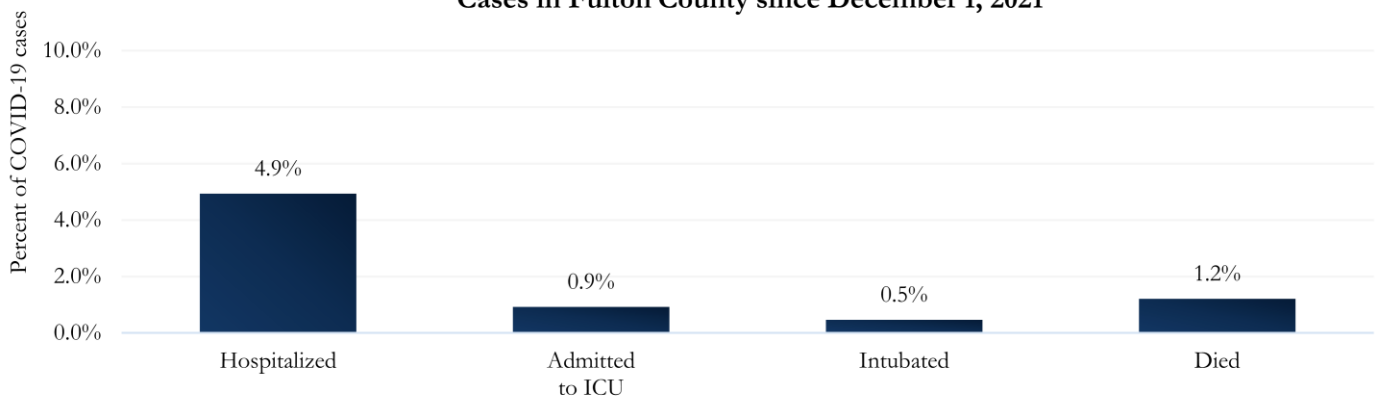


Fig. 12. Fulton County Confirmed Covid-19 Deaths by Month



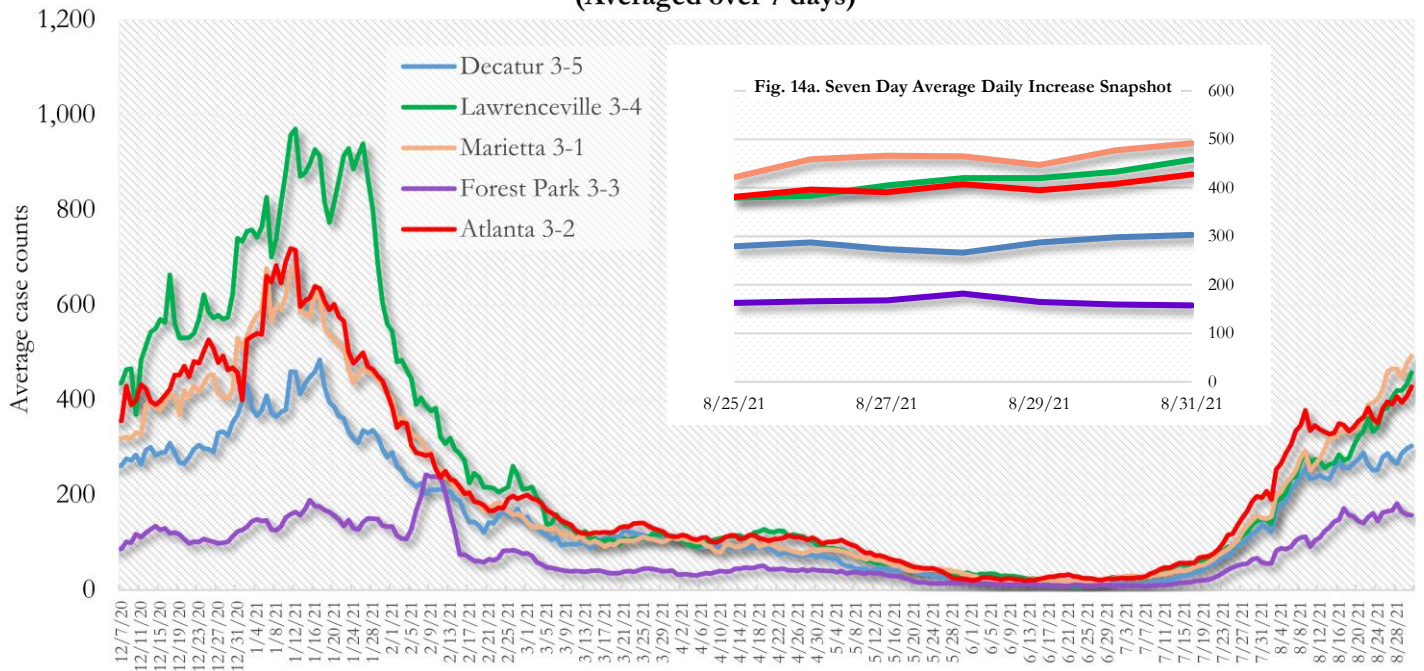
Values for July 2021 in figures 13 and 14 are subject to change as more hospitalizations, ICU admissions, and deaths get reported to state and local entities.

Fig. 13. Hospitalizations, ICU Admissions, Intubations, and Deaths among all Covid-19 Cases in Fulton County since December 1, 2021



COVID-19 CASE TRENDS IN FULTON AND SURROUNDING DISTRICTS

**Fig. 14. Daily Case Counts for Atlanta Metro Districts
(Averaged over 7 days)**



DEMOGRAPHIC DISTRIBUTIONS – COVID-19 CASES AND DEATHS

Table A - Cumulative and recent confirmed Covid-19 case and death counts by gender, age, and race/ethnicity in Fulton County, Georgia. Past 28 day period refers to July 28 – August 24, 2021

	Total Confirmed Cases	% of Total Cases	Confirmed Cases past 28 days	% of Confirmed Cases past 28 days	Total Confirmed Deaths	% of Total Deaths	Confirmed Deaths past 28 days	% of Confirmed Deaths past 28 days
TOTAL	98227		9406		1412		24	
Female	52078	53.0%	5085	54.1%	674	47.7%	14	58.3%
Male	45677	46.5%	4254	45.2%	738	52.3%	10	41.7%
Unknown*	472	<1%	67	<1%	0	-	0	-
0-9	4614	4.7%	1128	12.0%	0	-	0	-
10-19	11057	11.3%	1595	17.0%	<10	<1%	0	-
20-29	21732	22.1%	1690	18.0%	<10	<1%	0	-
30-39	18868	19.2%	1751	18.6%	29	2.1%	0	-
40-49	14819	15.1%	1307	13.9%	44	3.1%	<10	8.3%
50-59	12868	13.1%	956	10.2%	132	9.3%	<10	12.5%
60-69	7514	7.6%	551	5.9%	259	18.3%	<10	8.3%
>70	6689	6.8%	408	4.3%	942	66.7%	17	70.8%
Unknown*	66	<1%	20	<1%	0	-	0	-
Asian, NH	3609	3.7%	231	2.5%	24	1.7%	0	-
Black, NH	42970	43.7%	5088	54.1%	874	61.9%	13	54.2%
White, NH	31340	31.9%	1814	19.3%	449	31.8%	10	41.7%
Hispanic, all races	9958	10.1%	629	6.7%	59	4.2%	<10	4.2%
Other, NH	3259	3.3%	292	3.1%	<10	<1%	0	-
Unknown*	7091	7.2%	1352	14.4%	0	-	0	-

*Unknown includes cases not yet interviewed. 28 days delayed by seven to account for lag in reporting lab results. Deaths refer to all persons who had a positive PCR test result for Covid-19 and there is evidence that Covid-19 was the cause of death or a significant contributor to their death.

The following data are updated every two weeks.

Last updated 8/31/2021

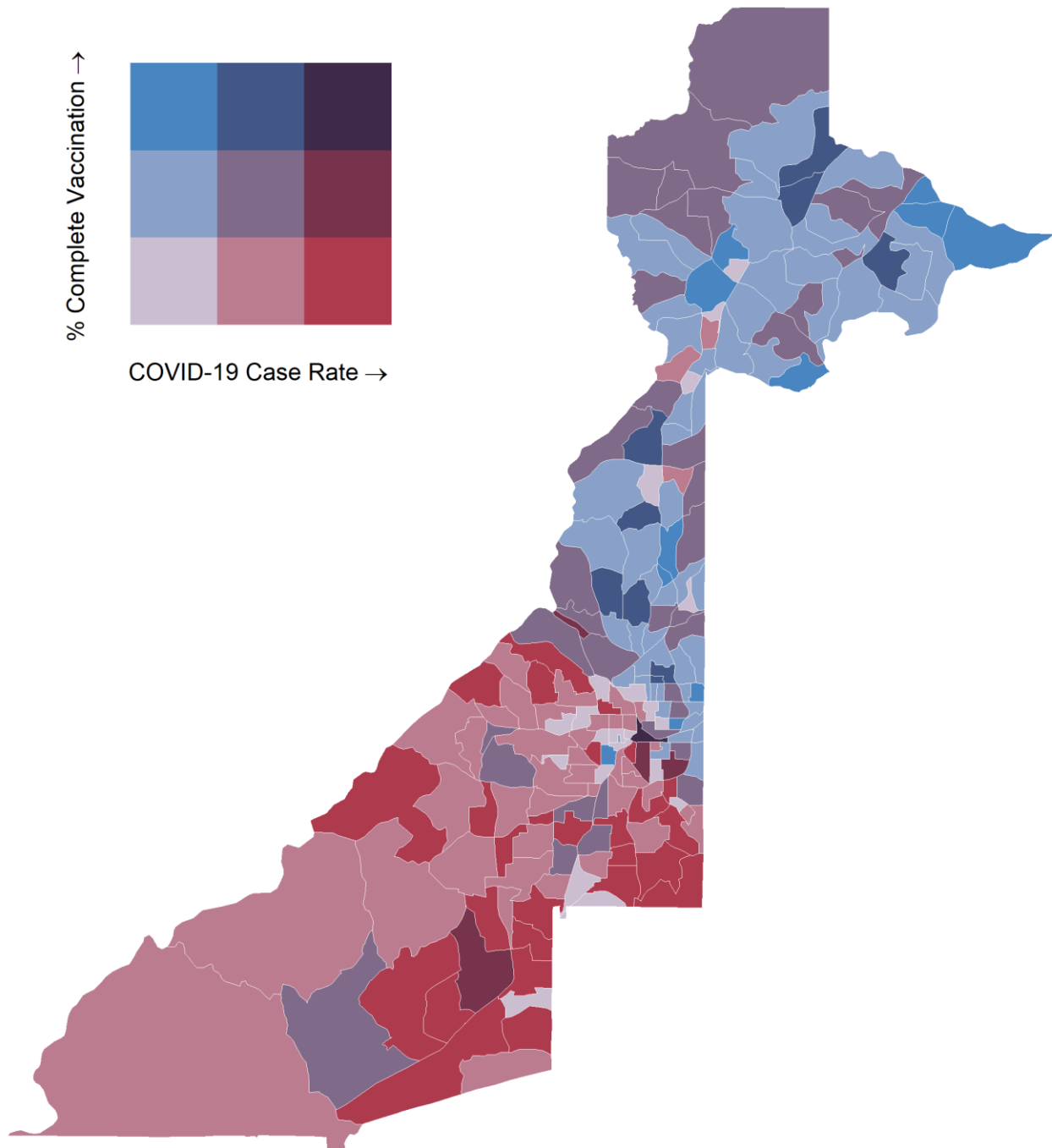
Data are from confirmed cases and PCR testing only.

These data are generated using a fixed start date and counted forward in 14-day intervals. Using these time blocks allows for the stability in trends over time and accounts for delays in reporting lab results.

In the interest of keeping the reports concise and useful, the cumulative counts updated on a monthly basis can now be viewed between updates at the Fulton County Board of Health website [here](#).

Please visit the Georgia Department of Public Health Daily Status Report [here](#) for cumulative daily counts.

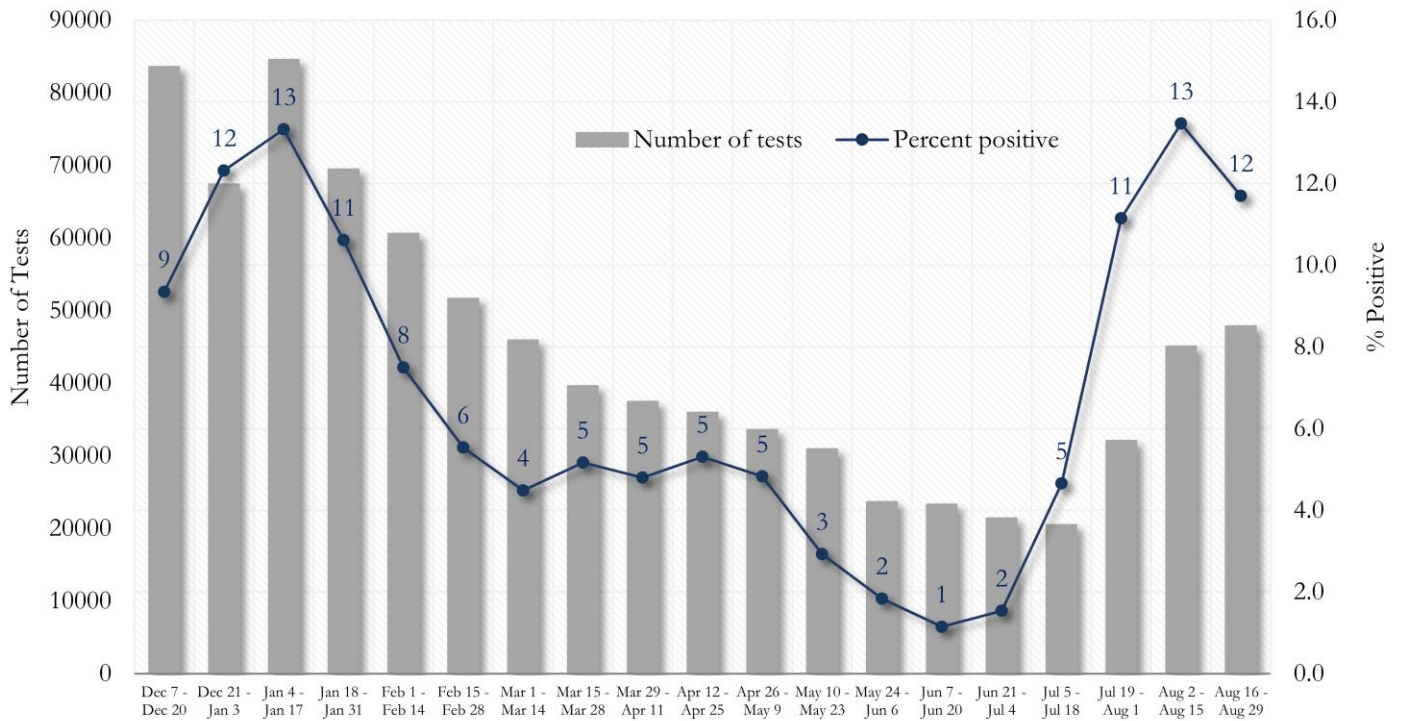
Fig. 15. Percent Complete Vaccination and COVID-19 Case Rate (per 100,000 population) by Census Tract



How to interpret these colors: The darker the blue, the better. The upper most blue box indicates low COVID-19 case rates and high vaccination coverage. Red is not ideal as red indicates high COVID-19 case rates and low vaccination coverage. Colors in between indicate varying combinations of COVID-19 case rates and vaccination coverage. COVID-19 case rate reflects new COVID-19 cases diagnosed between Aug 2nd and August 29th, 2021 across Fulton County. Vaccination data from: <https://experience.arcgis.com/experience/3d8eea39f5c1443db1743a4cb8948a9c>

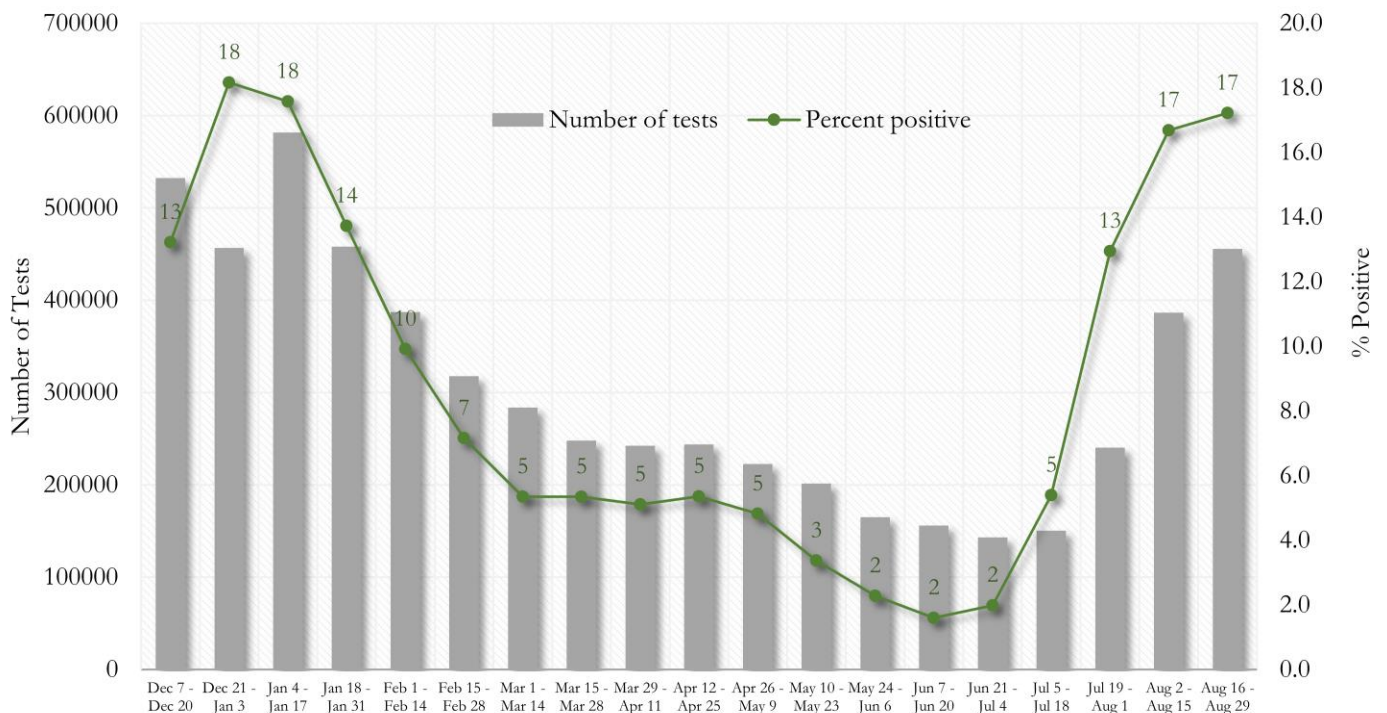
COVID-19 TESTING AND POSITIVITY IN FULTON COUNTY AND GEORGIA

Fig. 16. Trends in Positive Covid-19 Tests in Fulton County by 14-day Periods



*Data on Polymerase Chain Reaction (PCR) tests only included.

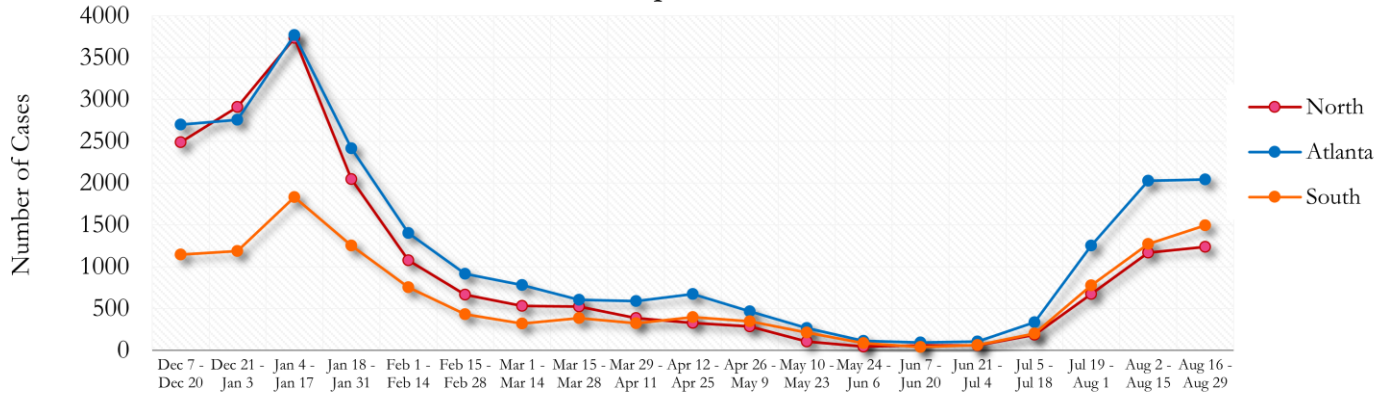
Fig. 17. Trends in Positive Covid-19 Tests in Georgia by 14-day Periods



*Data on Polymerase Chain Reaction (PCR) tests only included.

TRENDS IN COVID-19 CASES AMONG DEMOGRAPHIC GROUPS (14 DAY PERIODS)

Fig. 18. Trends in Geographic distribution of Covid-19 Cases in Fulton County by 14-day periods



In the past two weeks, Atlanta accounted for the majority of new cases.

*North - Includes all Fulton cities north of Atlanta (Alpharetta, Johns Creek, Milton, Mountain Park, Roswell, Sandy Springs)

*South - Includes all Fulton cities south of Atlanta (Chattahoochee Hills, College Park, East Point, Fairburn, Hapeville, Palmetto, South Fulton, and Union City)

Fig. 19. Trends in Racial Distribution of Covid-19 Cases in Fulton County by 14-day periods

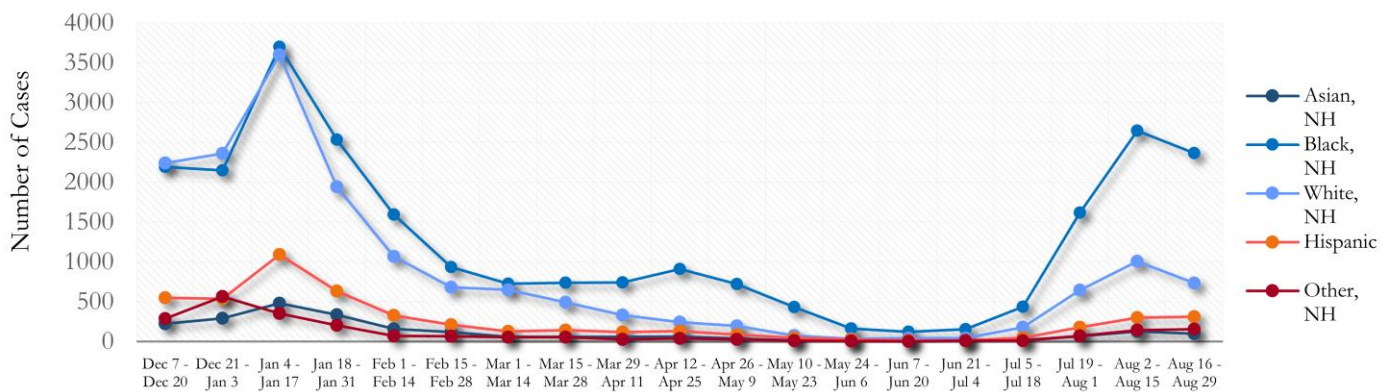
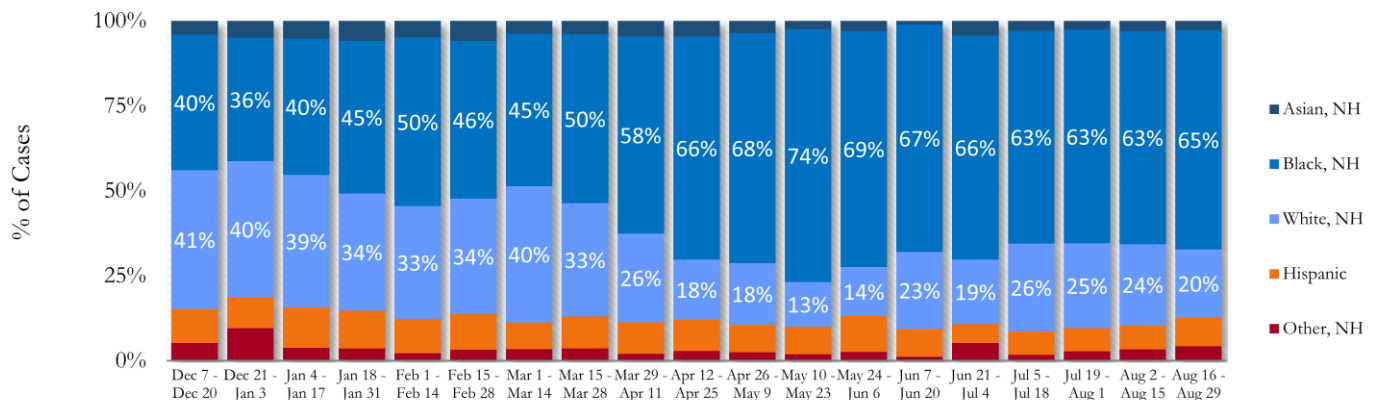


Fig. 20. Racial Distribution of Covid-19 Cases in Fulton County by 14-day periods



About 7% of all Fulton County COVID cases are missing data on patient race and ethnicity and in the past two weeks, about 26% of cases are missing this data. Percentages do not include the missing data and thus are subject to change as data are cleaned.

Fig. 21. Trends in Gender Distribution of Covid-19 Cases in Fulton County by 14-day periods

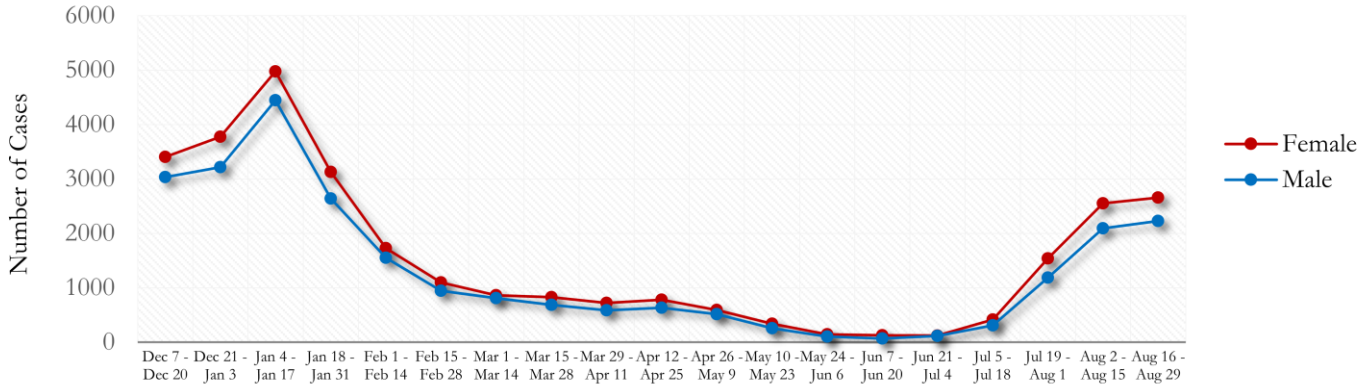
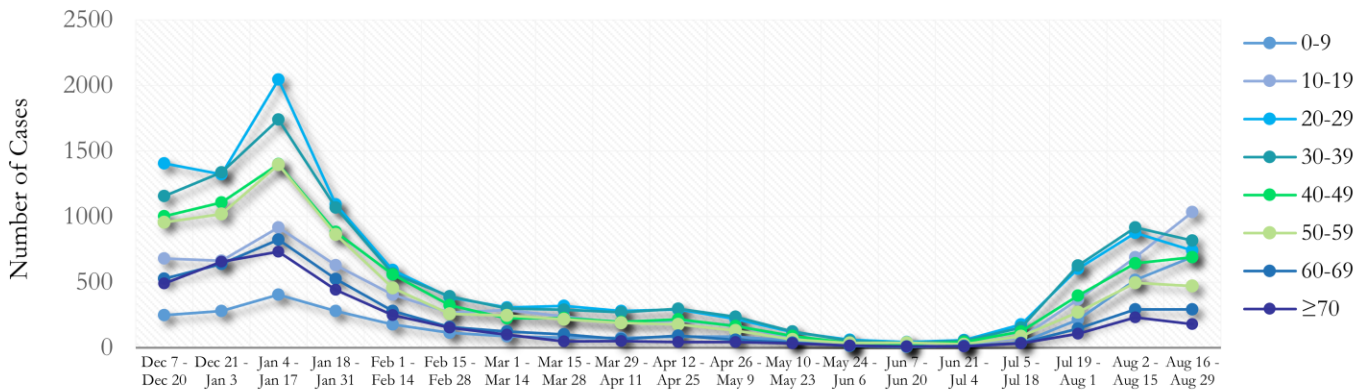
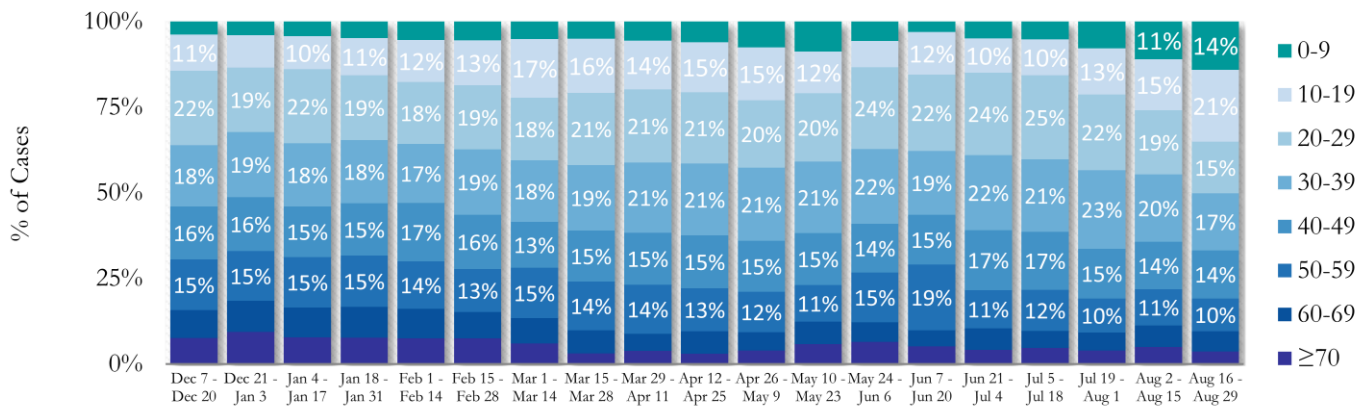


Fig. 22. Trends in Age Distribution of Covid-19 Cases in Fulton County by 14-day periods



In the most recent two weeks, 10-19 year olds and 30-39 year olds accounted for the majority of new cases.

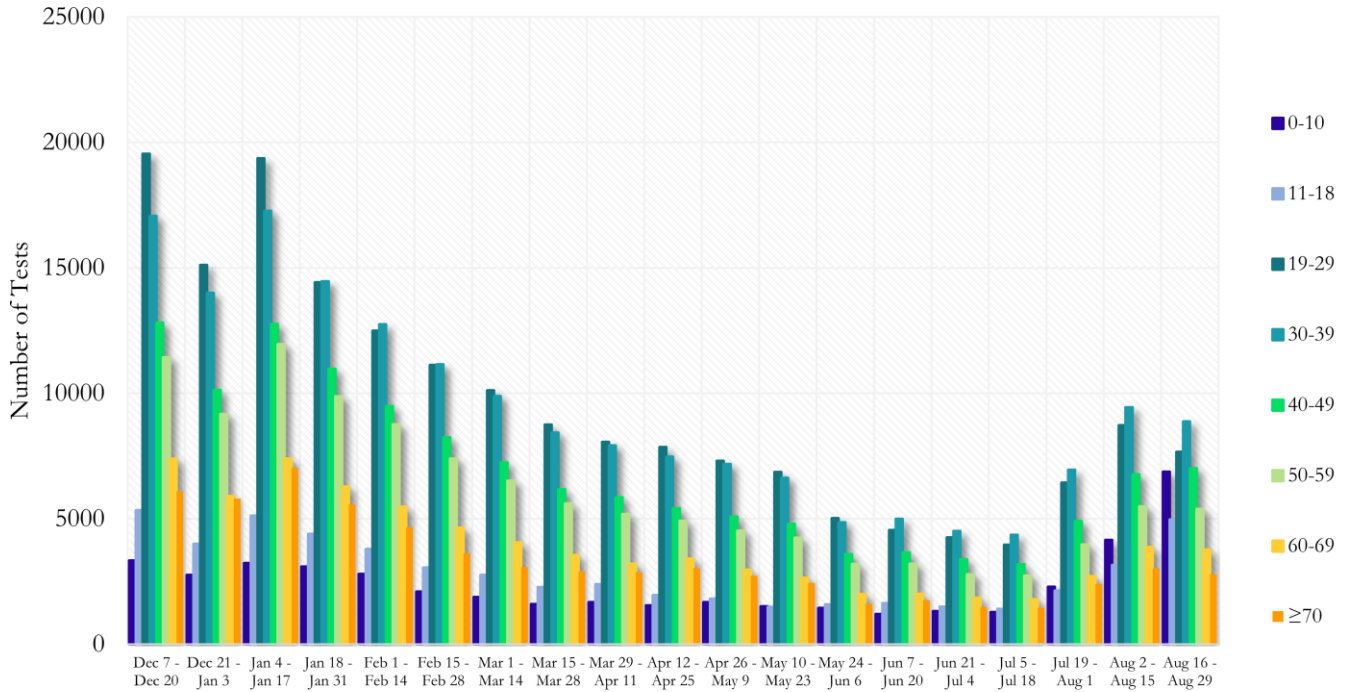
Fig. 23. Age Distribution of Covid-19 Cases in Fulton County by 14-day periods



Value labels under 10% are not shown. Percentages do not include the missing data and thus are subject to change as data are cleaned.

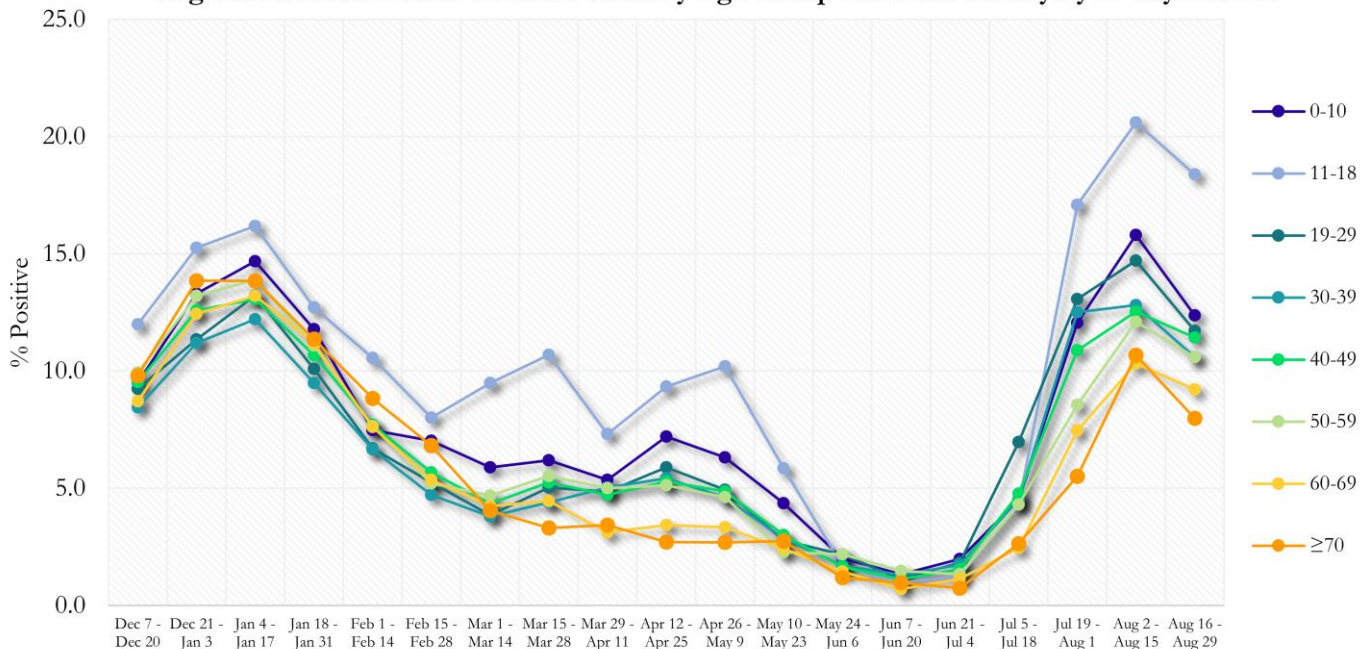
COVID-19 TESTING AND POSITIVITY IN FULTON COUNTY BY AGE AND RACE

Fig. 24. Covid-19 Tests by Age in Fulton County by 14-day Periods



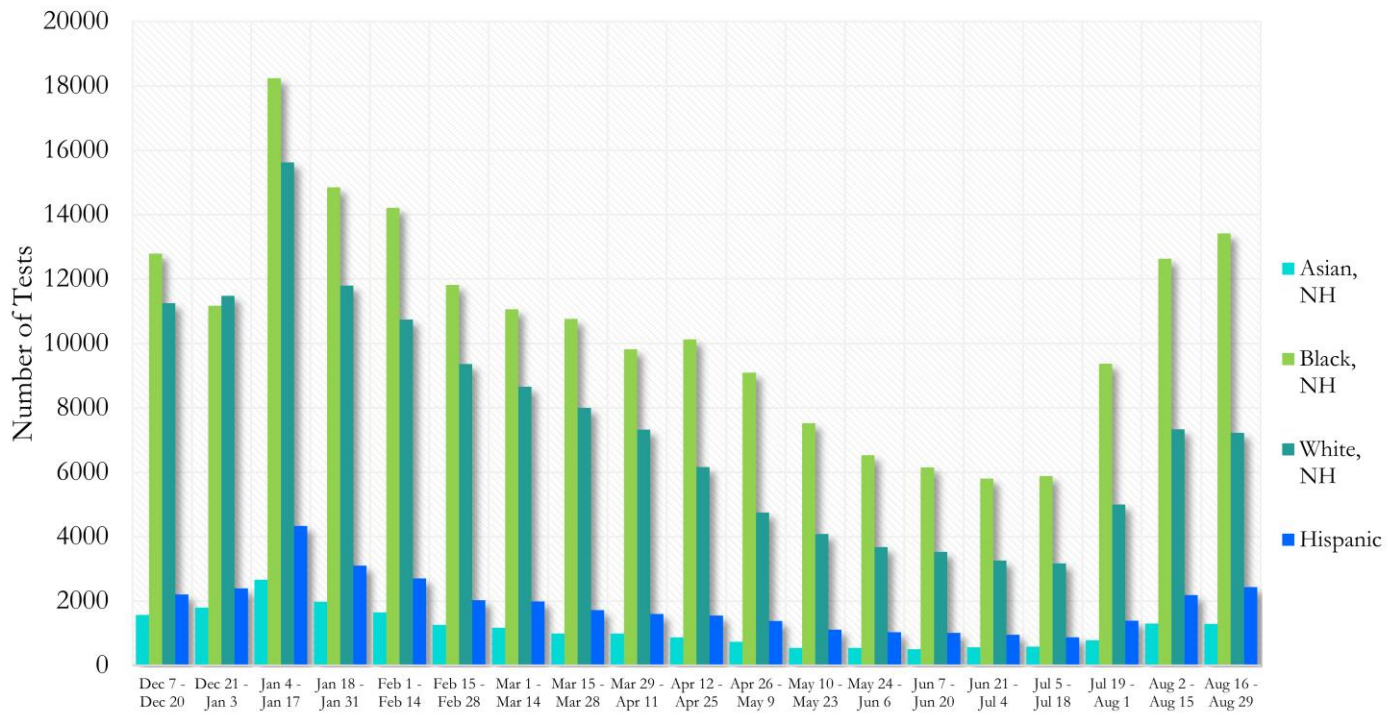
*Data on Polymerase Chain Reaction (PCR) tests only included.

Fig. 25. Percent Positive Covid-19 Tests by Age Group in Fulton County by 14-day Periods



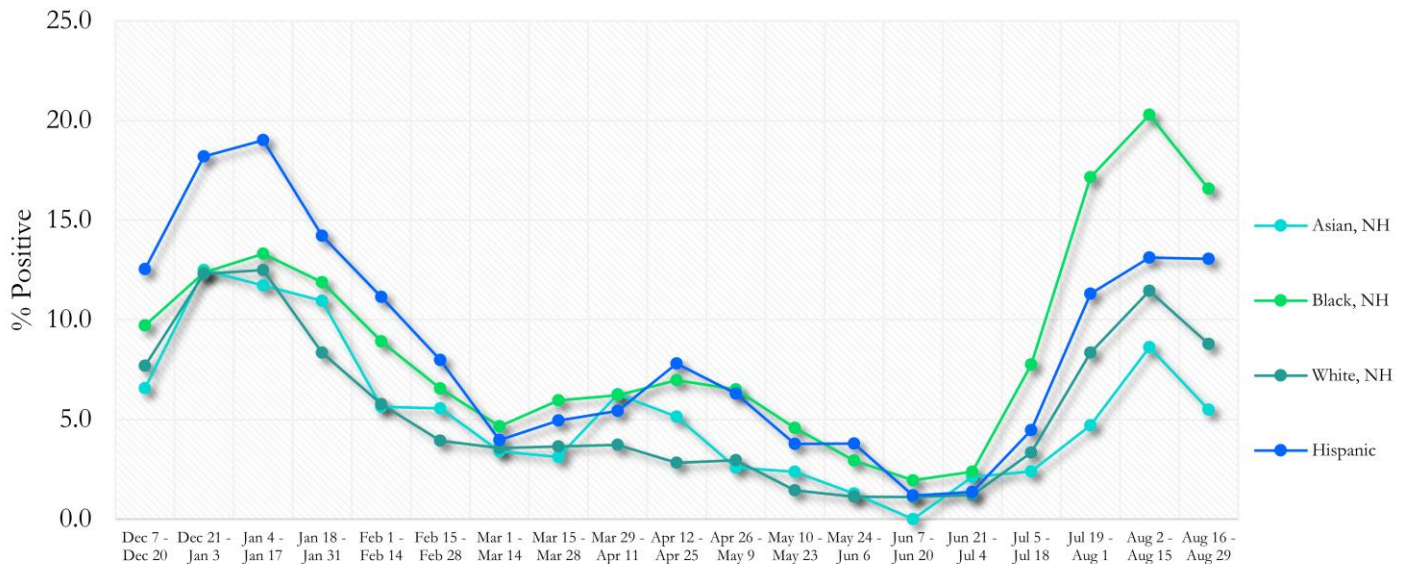
*Data on Polymerase Chain Reaction (PCR) tests only included.

Fig. 26. Covid-19 Tests by Race and Ethnicity in Fulton County by 14-day Periods



*Data on Polymerase Chain Reaction (PCR) tests only included. For the recent two weeks, 49% of test results did not have race/ethnicity information.

Fig. 27. Percent Positive Covid-19 Tests by Race and Ethnicity in Fulton County by 14-day Periods



*Data on Polymerase Chain Reaction (PCR) tests only included.