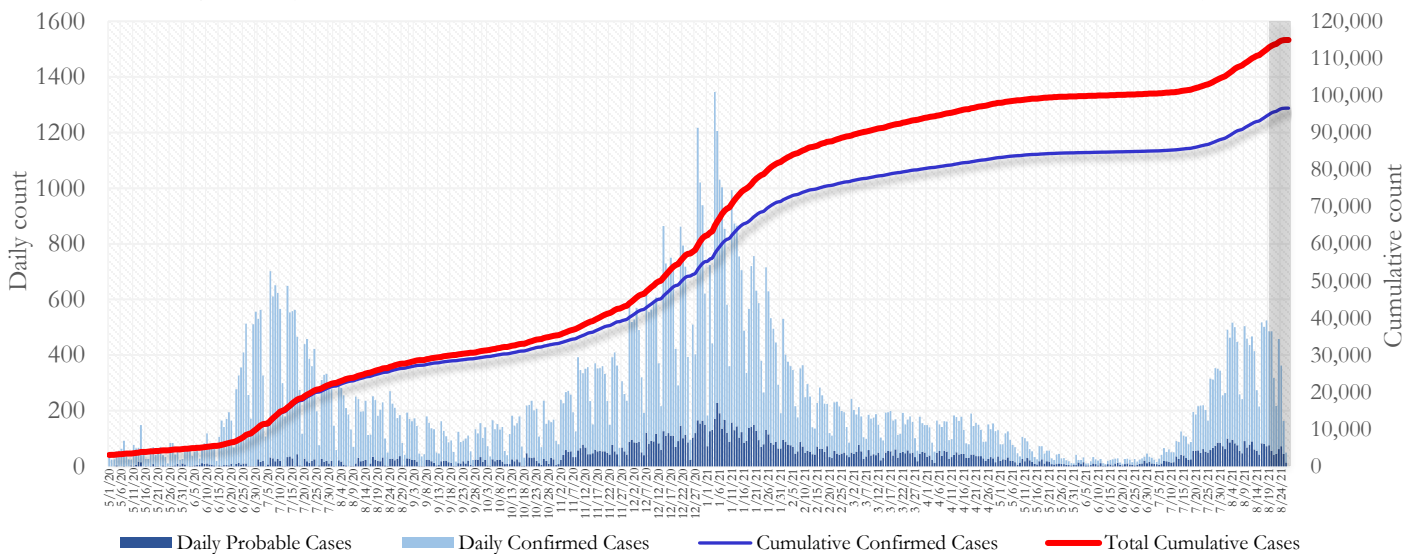


## SUMMARY

- As of August 27, 2021, Fulton County has recorded **96,618 confirmed cases** and **18,378 probable cases** of COVID-19.
- Figure 1 shows both confirmed and probable case counts but the ensuing tables and figures use data from **confirmed cases only**.
- As of August 27, 2021, Fulton County has recorded **1,409 confirmed COVID-19 deaths**. 164 deaths are currently under review by GA DPH to confirm cause of death.
- By city, new confirmed COVID-19 case rates range from 304.9 per 100,000 persons (Johns Creek) to 1006.7 per 100,000 persons (Union City). [**Fulton County Diagnoses Rates (per 100,000 persons): Cumulative – 8790.0; Incidence – 472.9**]. See map showing incident case rate by ZIP code on Pg.7.
- Of all PCR testing done in Fulton County between August 2 and August 15, the **percent positivity rate was 12.8%**.

**Fig 1. Daily and Cumulative Confirmed and Probable COVID-19 cases in Fulton County, GA**



Counts shown reflect the number of cases as of 9:00 am on 8/27/21 using the date of first positive sample collection. Where date of sample collection was not available or missing, the date of report creation in GA SendSS was used instead. The Georgia Department of Health defines a confirmed cases as someone with a positive molecular test, also known as PCR. A probable case is defined as a positive antigen test, though probable cases are still considered positive cases and individuals who tested positive through an antigen test should follow all DPH isolation and quarantine guidance. **Note:** Delays in data reporting may cause changes in data counts, particularly in the shaded portion. Data throughout this report are preliminary and subject to ongoing data cleaning processes, and thus are subject to change.

**THE FOLLOWING ANALYSES (PAGES 1-19) ARE USING DATA ON CONFIRMED CASES ONLY.**

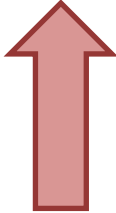
## DISTRIBUTION OF COVID-19 CASES BY REGION

**New cases:** 43% of the new COVID-19 cases in the past 2 weeks occurred in Atlanta while 25% and 28% occurred in the Northern and Southern regions of the county respectively.

Fulton Region	% Cumulative count	% New cases*
Atlanta	43.0%	43.0%
North <sup>1</sup>	32.5%	24.6%
South <sup>2</sup>	21.2%	28.2%
Unincorporated/Unknown	3.3%	4.3%

<sup>1</sup>Includes all Fulton County cities north of Atlanta (Alpharetta, Johns Creek, Milton, Mountain Park, Roswell, Sandy Springs.) <sup>2</sup>Includes all cities south of Atlanta (Chattahoochee Hills, College Park, East Point, Fairburn, Hapeville, Palmetto, South Fulton, and Union City) \***New cases:** Cases diagnosed in the past 2 weeks only (between 8/7/21 – 8/20/21).

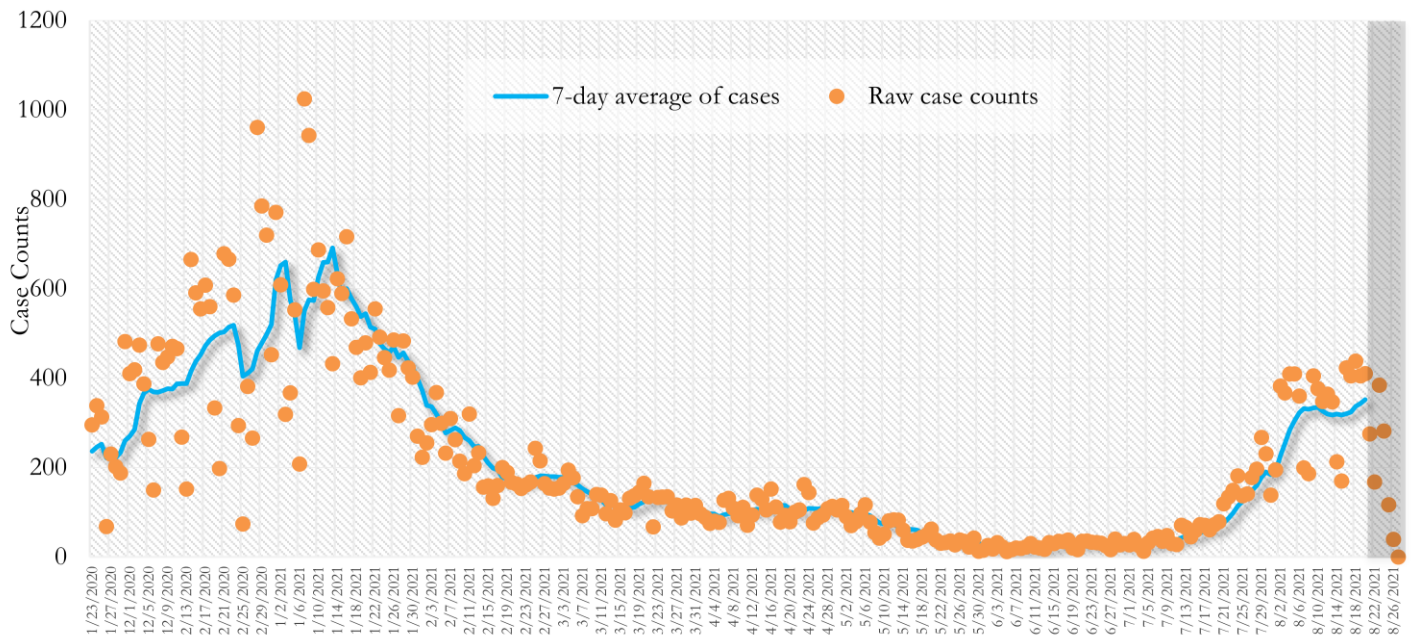
**In the recent two week reporting period (8/7-8/20), there were more new cases of COVID-19 in Fulton County than the previous two weeks (7/24-8/6).**



\*Delayed a week to account for testing results turnaround time.

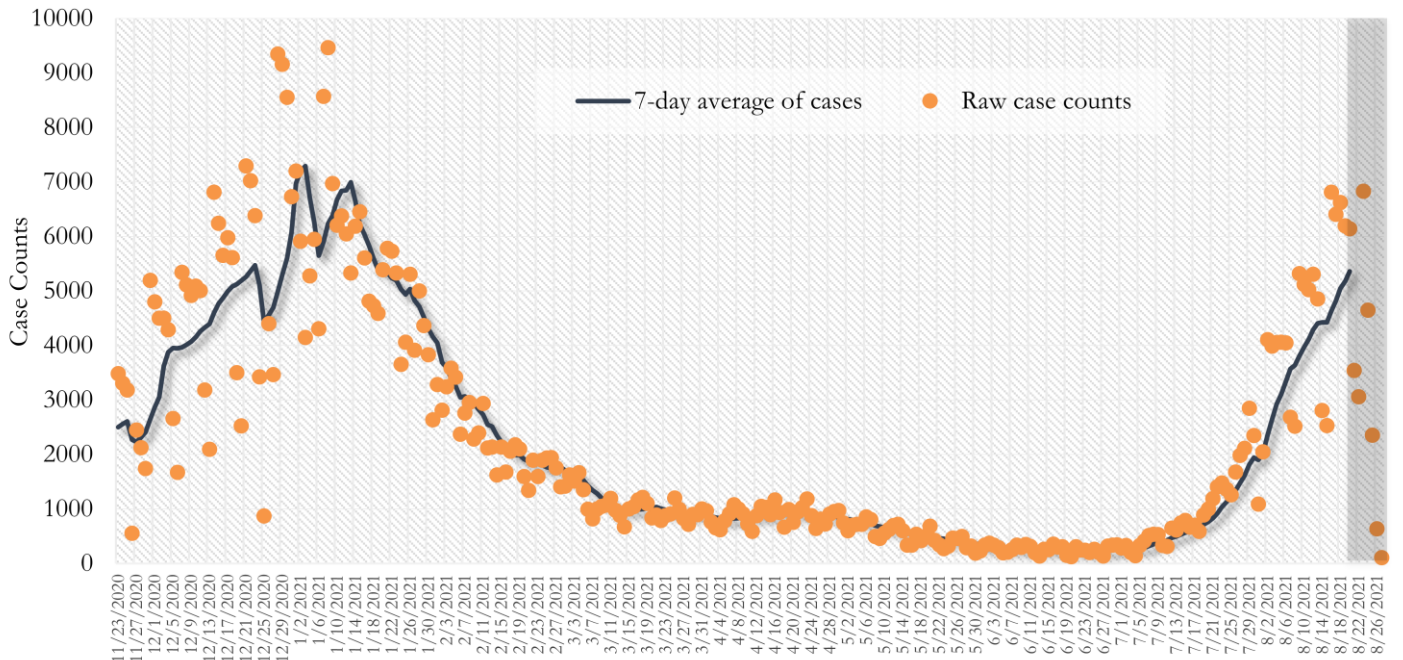
**TRENDS IN COVID-19 CASES, HOSPITALIZATIONS AND DEATHS (7-DAY MOVING AVE.)**

**Fig. 2. New COVID-19 Cases in Fulton County Daily (Averaged over 7 days)**



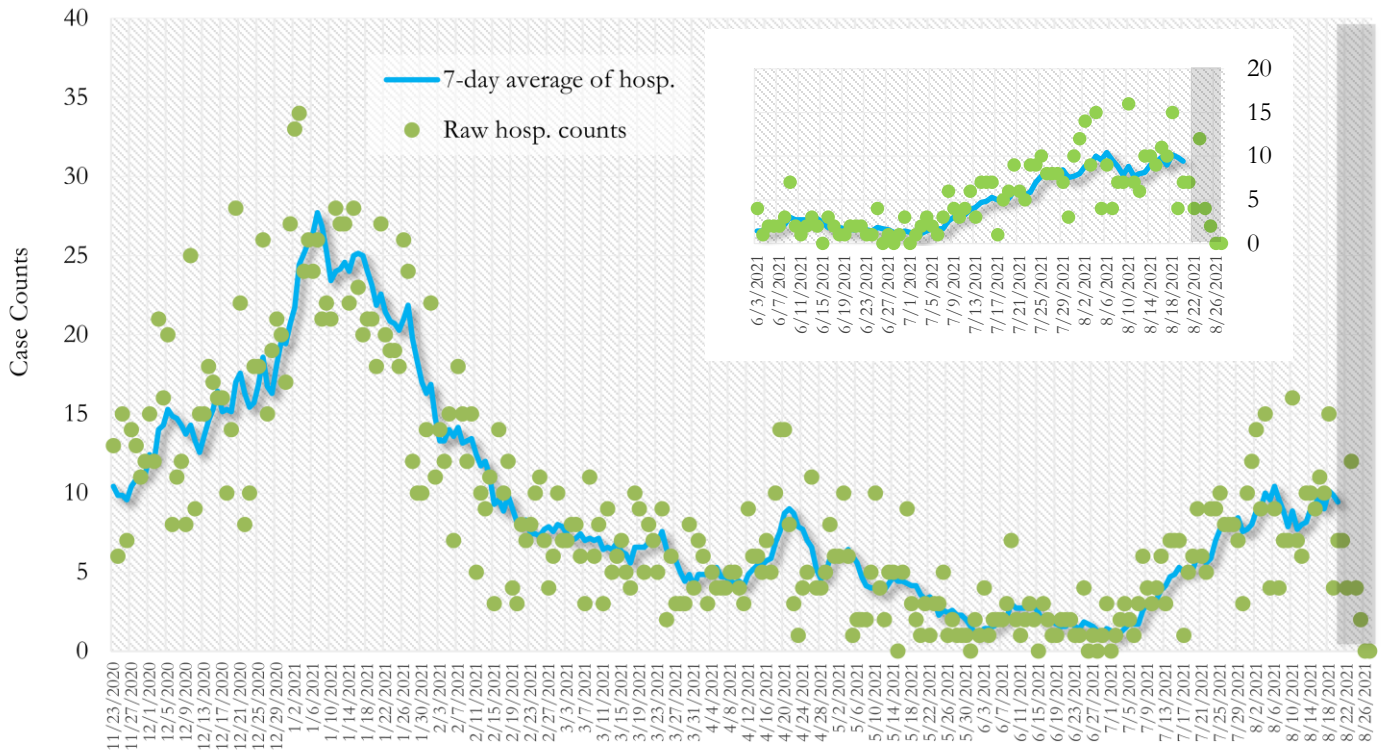
\*Date of collection of first positive sample used (report creation date used where sample collection date is missing). Graph above reflects the trend in COVID-19 diagnosis. Due to the high volume of testing in recent weeks, there have been delays in reporting lab results. Thus, the trend is subject to change as more lab results get added to the state surveillance database.

**Fig. 3. New COVID-19 Cases in Georgia State Daily (Averaged over 7 days)**



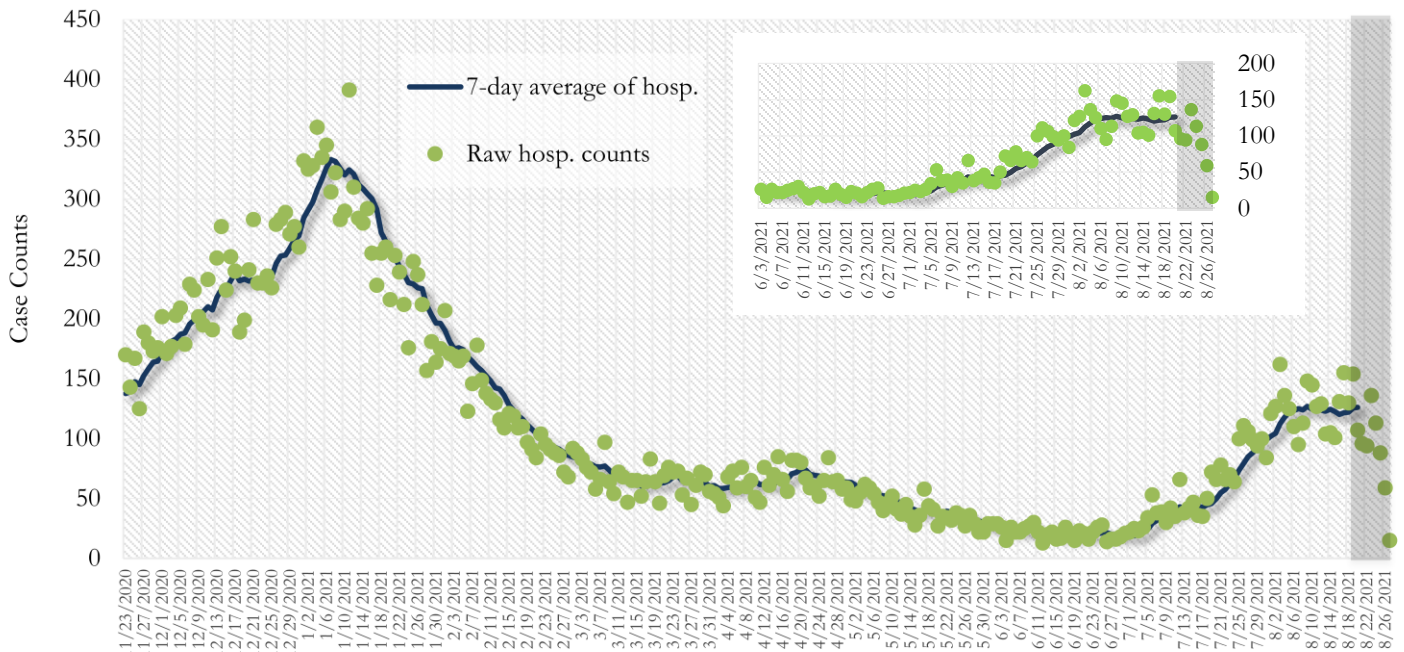
\*Date of collection of first positive sample used (report creation date used where sample collection date is missing). Graph above reflects the trend in COVID-19 diagnosis. Due to the high volume of testing in recent weeks, there have been delays in reporting lab results. Thus, the trend is subject to change as more lab results get added to the state surveillance database.

**Fig. 4. COVID-19 Hospitalizations in Fulton County Daily (Averaged over 7 days)**



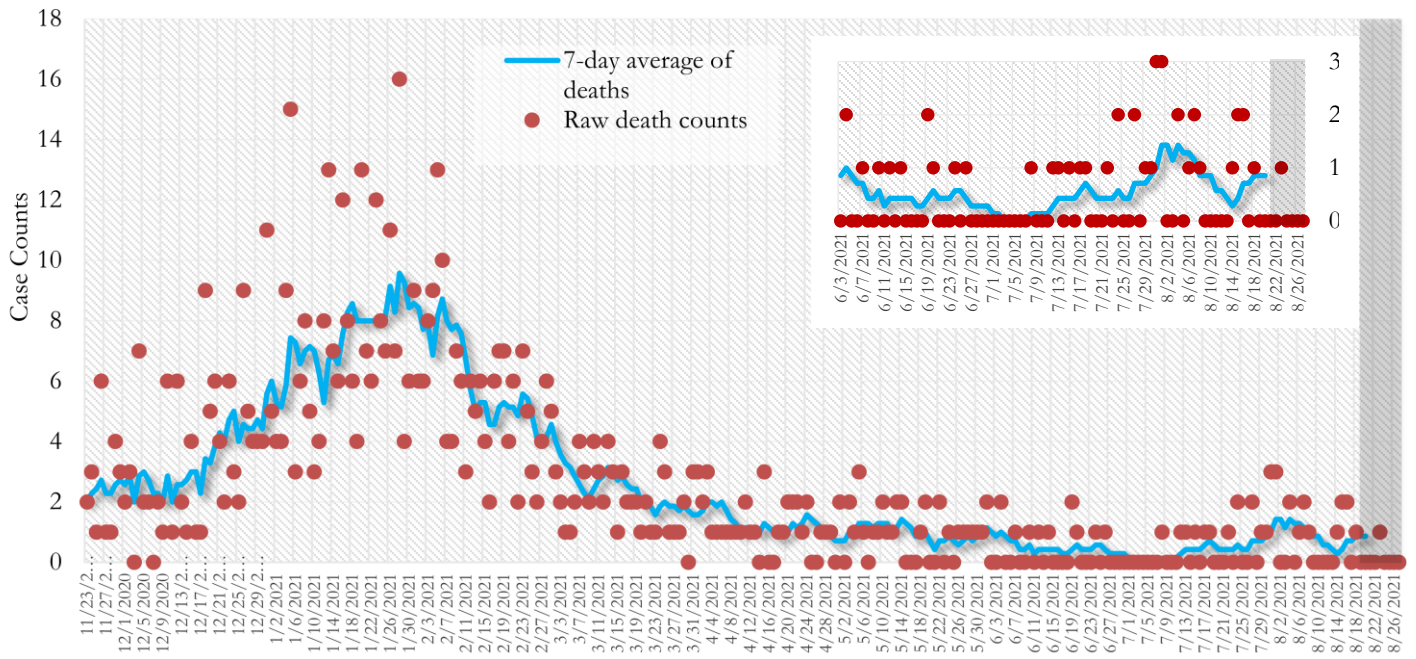
\*Reported date of hospital admission used. Graph above reflects the trend in COVID-19 hospitalizations. Due to the high volume of new cases being added daily, there have been delays in reporting hospitalization data. Thus, the trend is likely to change as more hospitalization data is reported in the state surveillance database.

**Fig. 5. COVID-19 Hospitalizations in Georgia State Daily (Averaged over 7 days)**



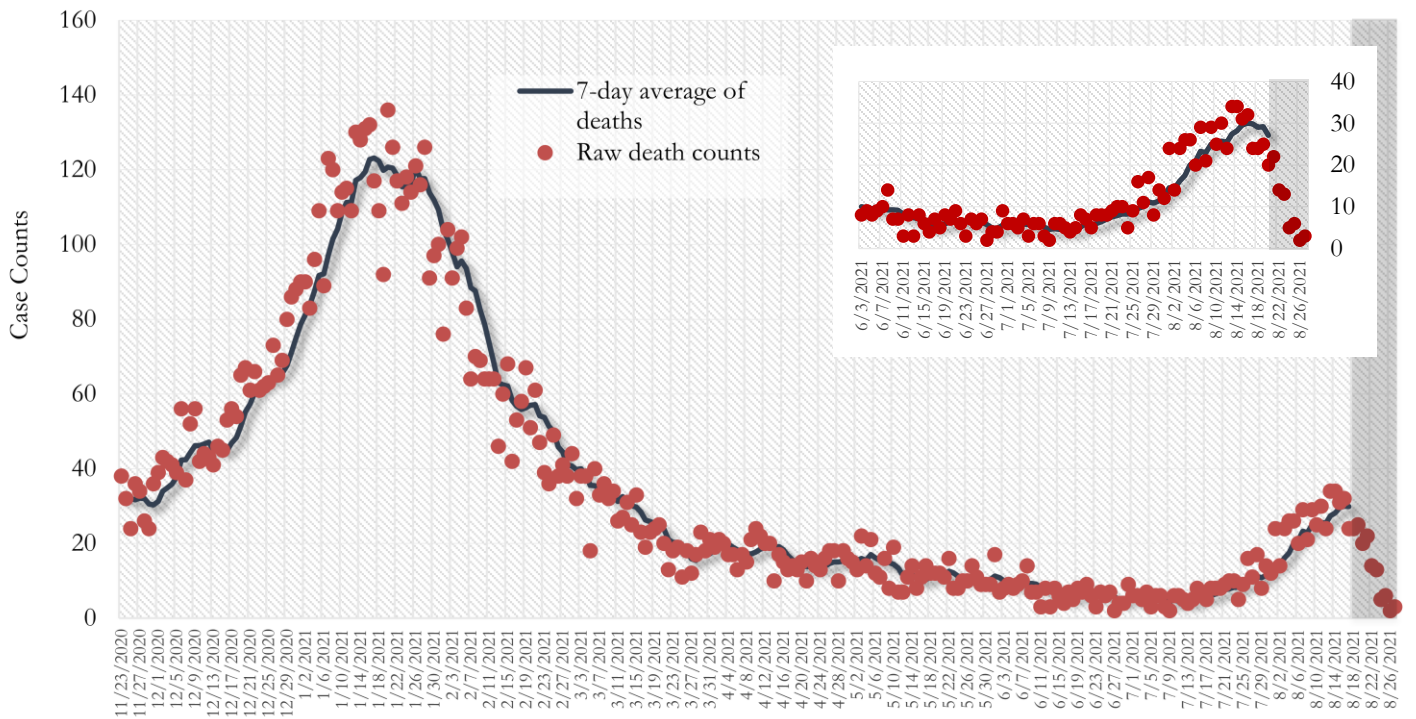
\*Reported date of hospital admission used. Graph above reflects the trend in COVID-19 hospitalizations. Due to the high volume of new cases being added daily, there have been delays in reporting hospitalization data. Thus, the trend is likely to change as more hospitalization data is reported in the state surveillance database.

Fig. 6. COVID-19 Deaths in Fulton County Daily (Averaged over 7 days)



\*Reported date of death used. Graph above reflects the trend in deaths attributed to COVID-19. The trend is likely to change as more data on deaths among persons with COVID-19 is reported in the state surveillance database.

Fig. 7. COVID-19 Deaths in Georgia State Daily (Averaged over 7 days)



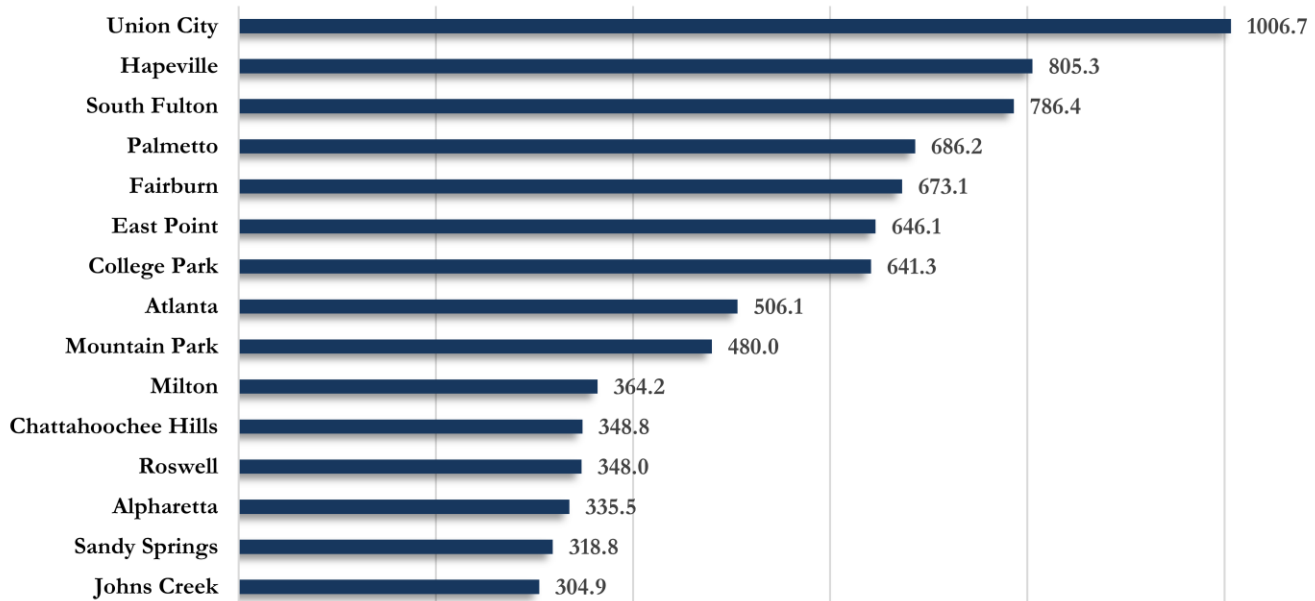
\*Reported date of death used. Graph above reflects the trend in deaths attributed to COVID-19. The trend is likely to change as more data on deaths among persons with COVID-19 is reported in the state surveillance database.

## COVID-19 CASE COUNTS AND RATES BY CITY

	Recent 14-day reporting period <sup>1</sup>	Preceding 14-day reporting period	% Change from preceding 14 days (%) <sup>2</sup>	Incidence Rate <sup>3</sup>
	8/7-8/20	7/24-8/6		
Alpharetta	217	152	↑ 42.8%	335.5
Atlanta	2233	1603	↑ 39.3%	506.1
Chattahoochee Hills	10	<10	↑ 25.0%	348.8
College Park	89	65	↑ 36.9%	641.3
East Point	226	169	↑ 33.7%	646.1
Fairburn	99	68	↑ 45.6%	673.1
Hapeville	53	26	↑ 103.8%	805.3
Johns Creek	255	171	↑ 49.1%	304.9
Milton	139	83	↑ 67.5%	364.2
Mountain Park	<10	0	-	480.0
Palmetto	30	36	↓ 16.7%	686.2
Roswell	328	238	↑ 37.8%	348.0
Sandy Springs	336	247	↑ 36.0%	318.8
South Fulton	748	465	↑ 60.9%	786.4
Union City	211	143	↑ 47.6%	1006.7
Unknown	219	84	-	-

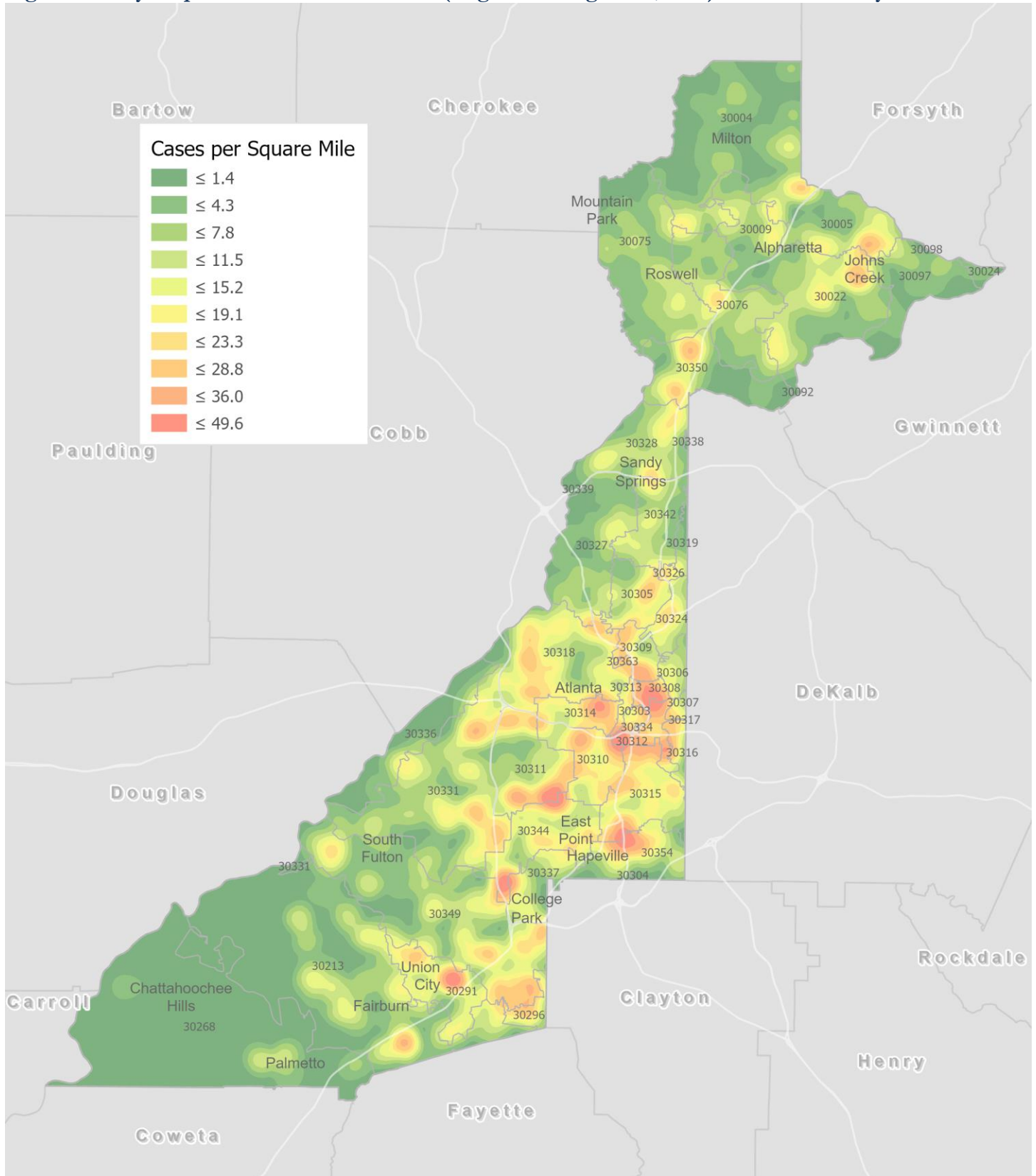
<sup>1</sup>**New cases:** Cases diagnosed in most recent 14 days (based on reported dates of positive sample collection). To allow for lag in reporting results of new diagnoses from samples collected in the most recent week, data used for incident diagnoses analyses were moved back by one week. <sup>2</sup>**% change:** These reflect the percentage increase or decrease in new diagnoses between the 14 days preceding the most recent 7 days and the 14 days preceding that. <sup>3</sup>**(Incidence) Rate:** Rate of new diagnoses in the last 14 day period preceding the immediate past week. **\*\*Data cleaning** (either during case interviews or address geo-coding) may lead to reassignment of few cases from one territory to another based on their corrected addresses. These may appear as "decreases" when compared to the previous counts. These do not reflect errors in the data collection or analysis process but only reflect the minor day-to-day fluctuations in case counts that arise in an evolving public health database like COVID's. **Note: All data reported are preliminary and subject to change.**

**Fig. 8. Incidence Rates by Fulton City for Recent 14-day Reporting Period**



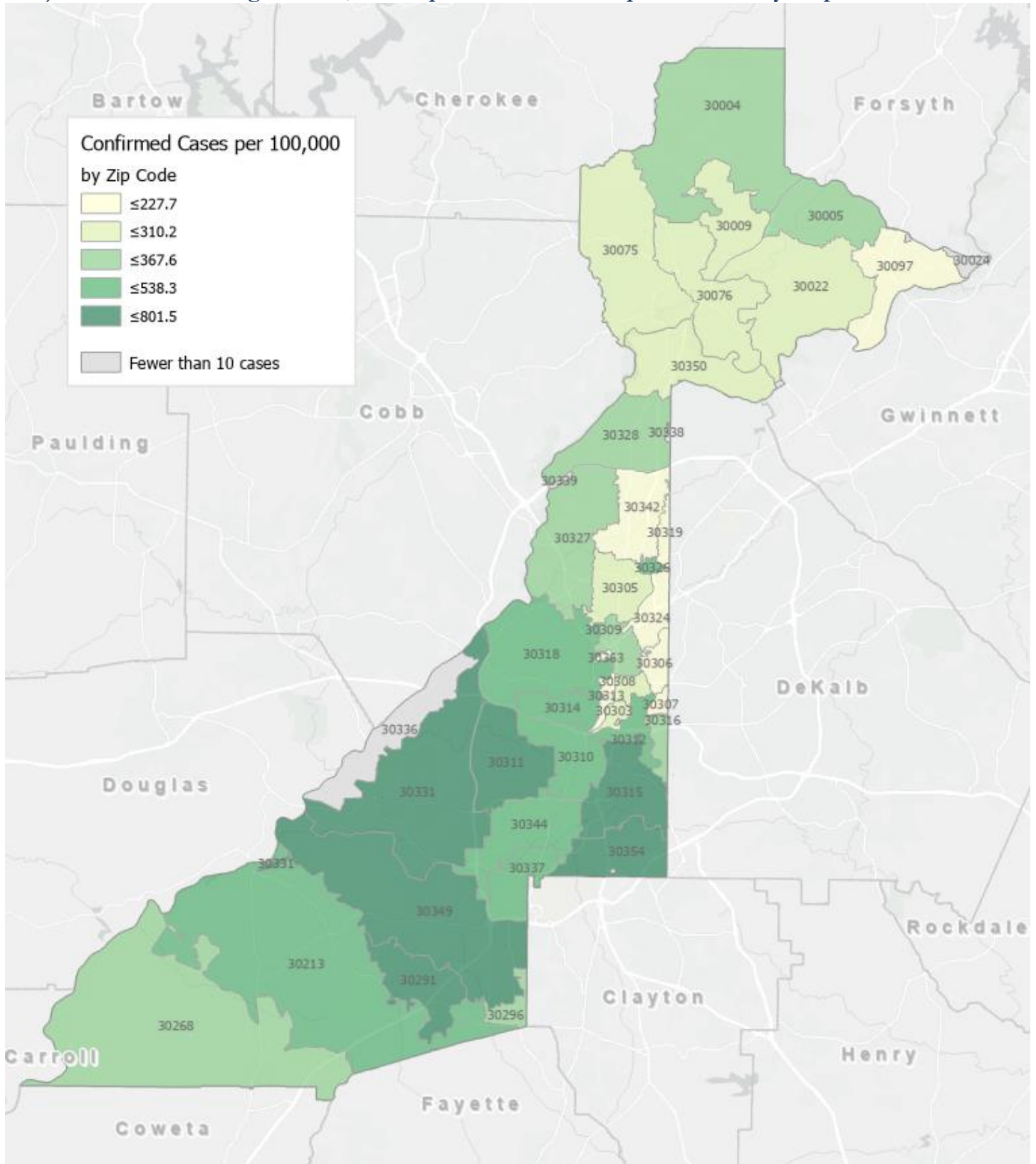
\*Rates shown are per 100,000 persons | All data shown are preliminary and are subject to change as testing results get updated.

Fig. 9. Density Map – New COVID-19 Cases (August 7 – August 20, 2021) in Fulton County



**New COVID-19 cases:** Cases diagnosed in most recent 14 days (based on reported dates of positive sample collection). To allow for lag in reporting results of positive cases from samples collected in the immediate past 7 days, data used for incident diagnoses analyses are moved back by one week. Map reflects new COVID-19 cases diagnosed between August 7<sup>th</sup> and August 20<sup>th</sup>, 2021 across Fulton County, excluding LTCF cases.

Fig. 10. New COVID-19 Diagnoses Rates (per 100,000 population) by Zip Code (August 4 – August 17, 2021) – Due to a technological error, this map was unable to be updated for today’s report



\*Rates shown are per 100,000 populations.

**New COVID-19 cases:** Cases diagnosed in the most recent 14 days (based on reported dates of positive sample collection). To allow for lag in reporting results of positive cases from samples collected in the immediate past 7 days, data used for incident diagnoses analyses are moved back by one week. Data used excludes outbreak-related cases at long-term care facilities and map shown reflects only the new non-LTCF cases diagnosed between the dates shown in map title. See page 8 for zip code break down table.

## COVID-19 NEW CASE<sup>1</sup> COUNTS BY ZIP CODE

Zip Code	Recent 14-day reporting period (8/7– 8/20)	Previous 14-day reporting period (7/24– 8/6)	% Change between reporting periods <sup>2</sup>
<b>All Fulton</b>	<b>5198</b>	<b>3559</b>	<b>↑ 46.1%</b>
30004	218	111	↑ 96.4%
30005	137	64	↑ 114.1%
30009	62	53	↑ 17.0%
30022	224	167	↑ 34.1%
30023	0	0	-
30024	<10	<10	-
30075	178	121	↑ 47.1%
30076	137	97	↑ 41.2%
30080	0	0	-
30097	39	34	↑ 14.7%
30098	0	<10	↓ 100.0%
30135	0	0	-
30138	0	0	-
30139	0	0	-
30213	271	188	↑ 44.1%
30268	47	45	↑ 4.4%
30291	219	146	↑ 50.0%
30296	35	13	↑ 169.2%
30301	<10	0	-
30303	23	11	↑ 109.1%
30305	92	78	↑ 17.9%
30306	33	26	↑ 26.9%
30307	17	18	↓ 5.6%
30308	65	50	↑ 30.0%
30309	96	74	↑ 29.7%
30310	171	122	↑ 40.2%
30311	237	146	↑ 62.3%
30312	148	106	↑ 39.6%
30313	21	31	↓ 32.3%
30314	111	64	↑ 73.4%
30315	239	140	↑ 70.7%
30316	56	34	↑ 64.7%
30318	343	262	↑ 30.9%
30319	10	11	↓ 9.1%
30321	0	<10	↓ 100.0%
30324	64	73	↓ 12.3%
30326	25	24	↑ 4.2%
30327	100	68	↑ 47.1%
30328	130	89	↑ 46.1%
30331	423	265	↑ 59.6%
30334	<10	0	-
30336	12	11	↑ 9.1%
30337	79	67	↑ 17.9%

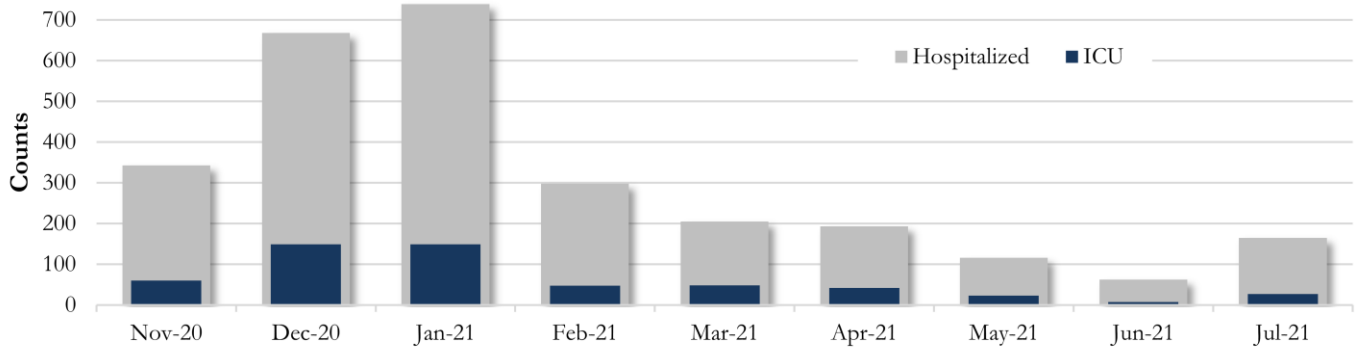
Zip Code	Recent 14-day reporting period (8/7– 8/20)	Previous 14-day reporting period (7/24– 8/6)	% Change between reporting periods
30338	<10	<10	-
30339	38	19	↑ 100.0%
30340	0	0	-
30341	<10	<10	-
30342	105	90	↑ 16.7%
30344	206	155	↑ 32.9%
30345	<10	<10	-
30349	451	273	↑ 65.2%
30350	122	75	↑ 62.7%
30354	144	94	↑ 53.2%
30358	0	0	-
30363	14	12	↑ 16.7%
30374	<10	<10	-
30606	0	0	-
31131	0	0	-
31150	0	0	-
Unknown	40	22	-

<sup>1</sup>**New cases:** Cases diagnosed in most recent 28 days (based on reported dates of positive sample collection). To allow for lag in reporting results of new diagnoses from samples collected in the most recent week, data used for incident diagnoses analyses were moved back by one week. <sup>2</sup>**Percent change:** These reflect the percentage increase or decrease of new diagnoses between the 14 days preceding the past 7 days and the 14 days preceding that. Changes in ZIP codes with less than 10 cases in both 2 week intervals are not reported.

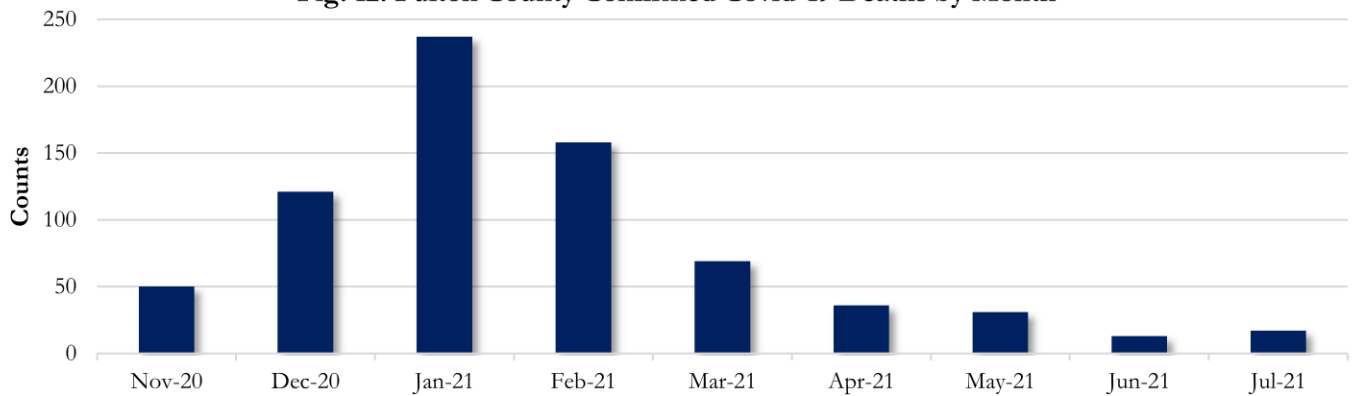


**COVID-19 HOSPITALIZATIONS, ICU ADMISSIONS AND DEATHS IN FULTON**

**Fig. 11. Fulton County Covid-19 Cases Hospitalized and Admitted to ICU by Month**

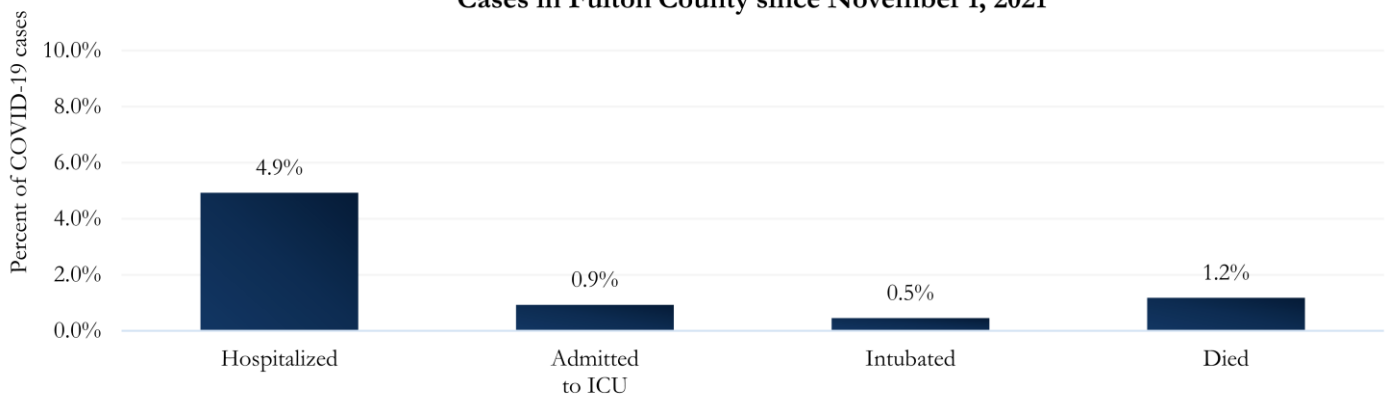


**Fig. 12. Fulton County Confirmed Covid-19 Deaths by Month**



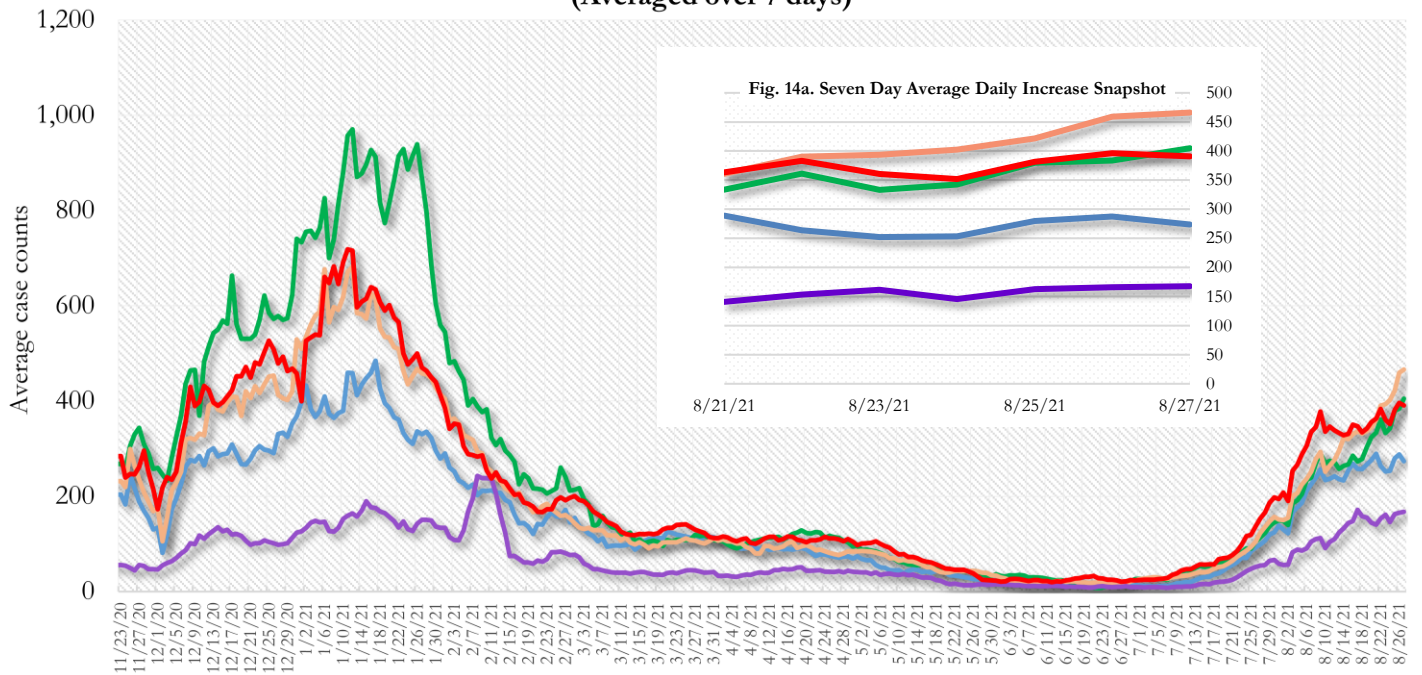
Values for July 2021 in figures 13 and 14 are subject to change as more hospitalizations, ICU admissions, and deaths get reported to state and local entities.

**Fig. 13. Hospitalizations, ICU Admissions, Intubations, and Deaths among all Covid-19 Cases in Fulton County since November 1, 2021**



### COVID-19 CASE TRENDS IN FULTON AND SURROUNDING DISTRICTS

**Fig. 14. Daily Case Counts for Atlanta Metro Districts  
(Averaged over 7 days)**



## DEMOGRAPHIC DISTRIBUTIONS – COVID-19 CASES AND DEATHS

**Table A** - Cumulative and recent confirmed Covid-19 case and death counts by gender, age, and race/ethnicity in Fulton County, Georgia. Past 28 day period refers to July 24 – August 20, 2021

	Total Confirmed Cases	% of Total Cases	Confirmed Cases past 28 days	% of Confirmed Cases past 28 days	Total Confirmed Deaths	% of Total Deaths	Confirmed Deaths past 28 days	% of Confirmed Deaths past 28 days
<b>TOTAL</b>	<b>96618</b>		<b>8757</b>		<b>1409</b>		<b>26</b>	
Female	51198	53.0%	4767	54.4%	673	47.8%	14	53.8%
Male	44961	46.5%	3933	44.9%	736	52.2%	12	46.2%
Unknown*	459	<1%	57	<1%	0	-	0	-
0-9	4412	4.6%	988	11.3%	0	-	0	-
10-19	10714	11.1%	1396	15.9%	<10	<1%	0	-
20-29	21491	22.2%	1654	18.9%	<10	<1%	0	-
30-39	18583	19.2%	1701	19.4%	29	2.1%	0	-
40-49	14613	15.1%	1219	13.9%	44	3.1%	<10	7.7%
50-59	12713	13.2%	891	10.2%	131	9.3%	<10	15.4%
60-69	7400	7.7%	509	5.8%	258	18.3%	<10	7.7%
>70	6627	6.9%	381	4.4%	941	66.8%	18	69.2%
Unknown*	65	<1%	18	<1%	0	-	0	-
Asian, NH	3568	3.7%	222	2.5%	24	1.7%	0	-
Black, NH	42237	43.7%	4857	55.5%	871	61.8%	14	53.8%
White, NH	31009	32.1%	1741	19.9%	449	31.9%	11	42.3%
Hispanic, all races	9859	10.2%	565	6.5%	59	4.2%	<10	3.8%
Other, NH	3201	3.3%	256	2.9%	<10	<1%	0	-
Unknown*	6744	7.0%	1116	12.7%	0	-	0	-

\*Unknown includes cases not yet interviewed. 28 days delayed by seven to account for lag in reporting lab results. Deaths refer to all persons who had a positive PCR test result for Covid-19 and there is evidence that Covid-19 was the cause of death or a significant contributor to their death.

The following data are updated every two weeks.

Last updated 8/17/2021

Data are from confirmed cases and PCR testing only.

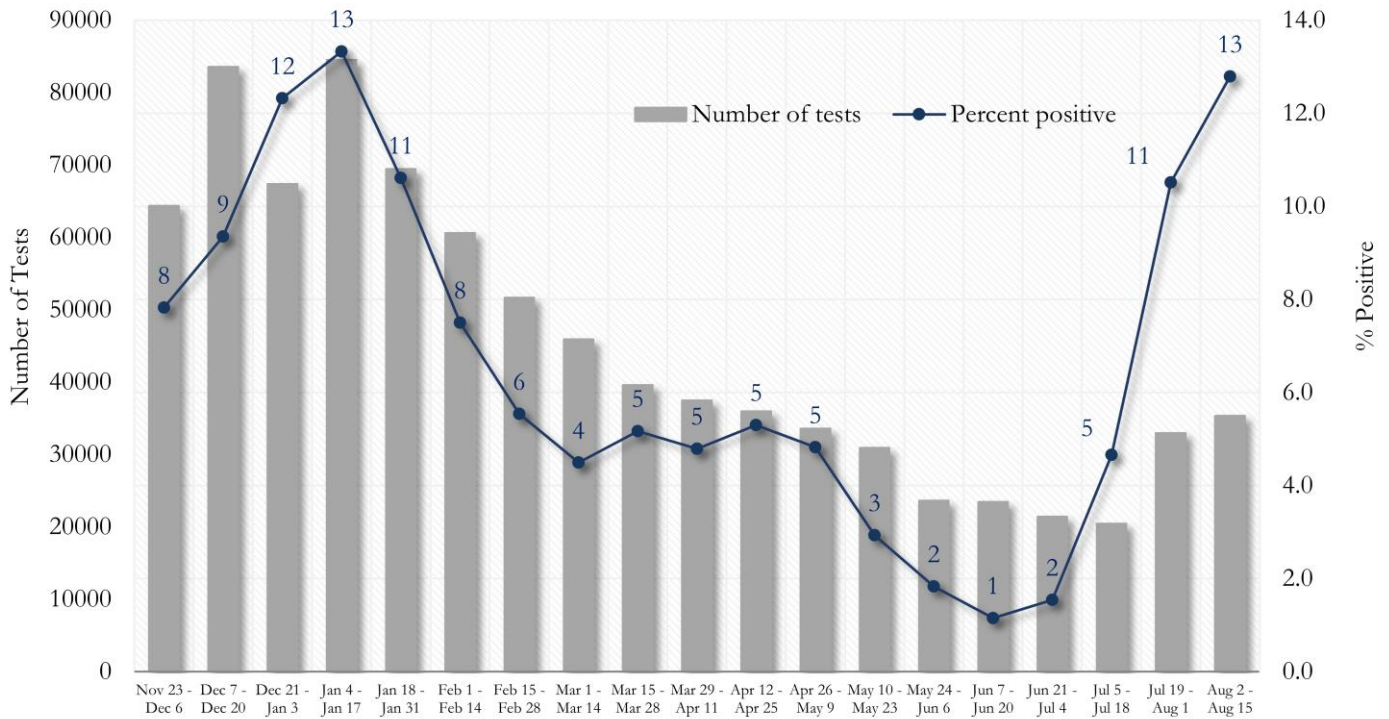
These data are generated using a fixed start date and counted forward in 14-day intervals. Using these time blocks allows for the stability in trends over time and accounts for delays in reporting lab results.

In the interest of keeping the reports concise and useful, the cumulative counts updated on a monthly basis can now be viewed between updates at the Fulton County Board of Health website [here](#).

Please visit the Georgia Department of Public Health Daily Status Report [here](#) for cumulative daily counts.

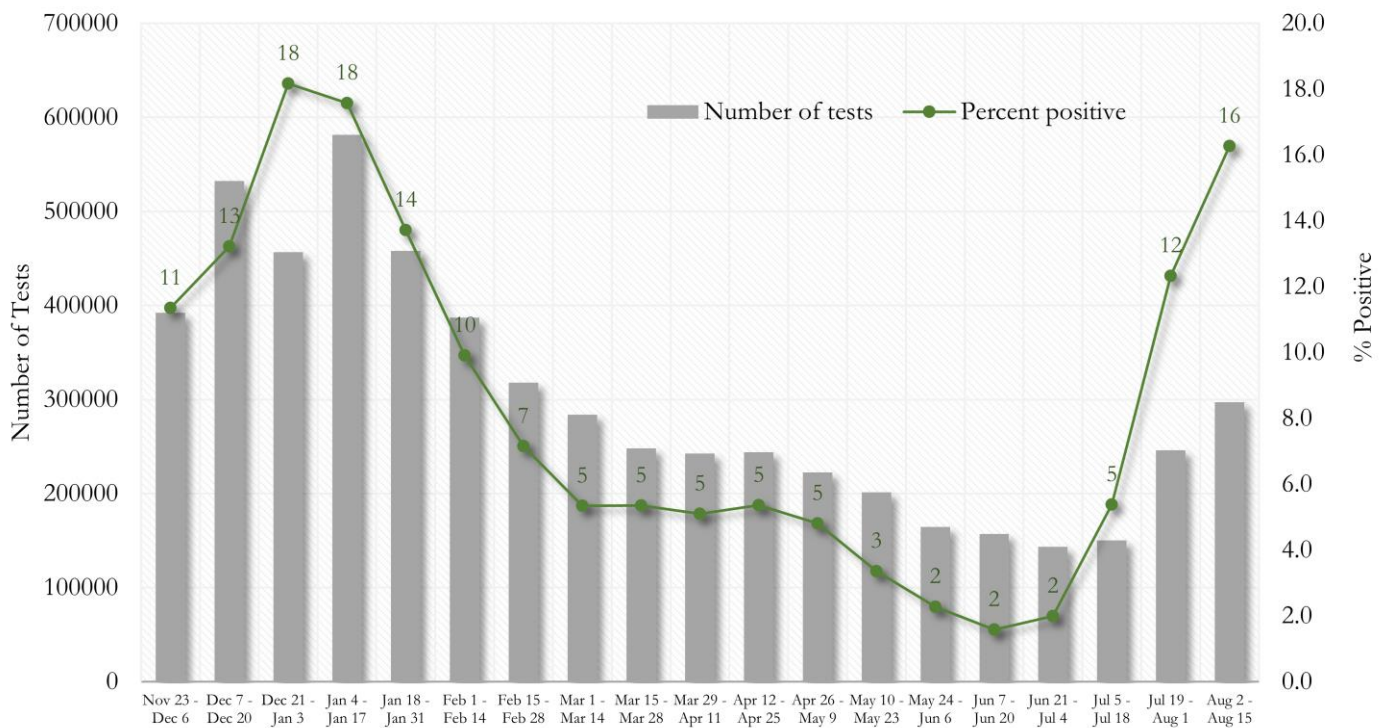
## COVID-19 TESTING AND POSITIVITY IN FULTON COUNTY AND GEORGIA

**Fig. 15. Trends in Positive COVID-19 Tests in Fulton County by 14-day Periods**



\*Data on Polymerase Chain Reaction (PCR) tests only included.

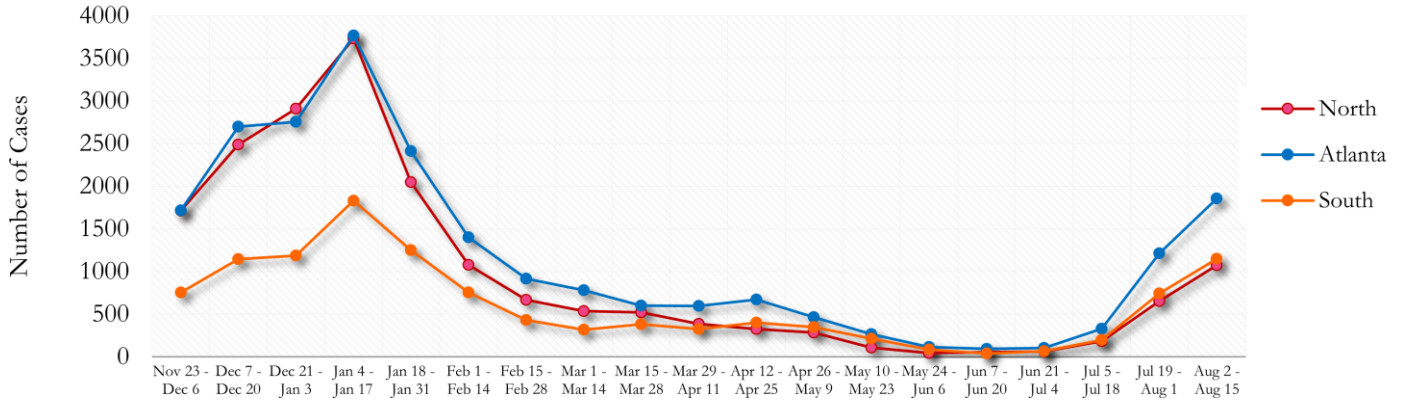
**Fig. 16. Trends in Positive COVID-19 Tests in Georgia by 14-day Periods**



\*Data on Polymerase Chain Reaction (PCR) tests only included.

**TRENDS IN COVID-19 CASES AMONG DEMOGRAPHIC GROUPS (14 DAY PERIODS)**

**Fig. 17. Trends in Geographic distribution of COVID-19 Cases in Fulton County by 14-day periods**

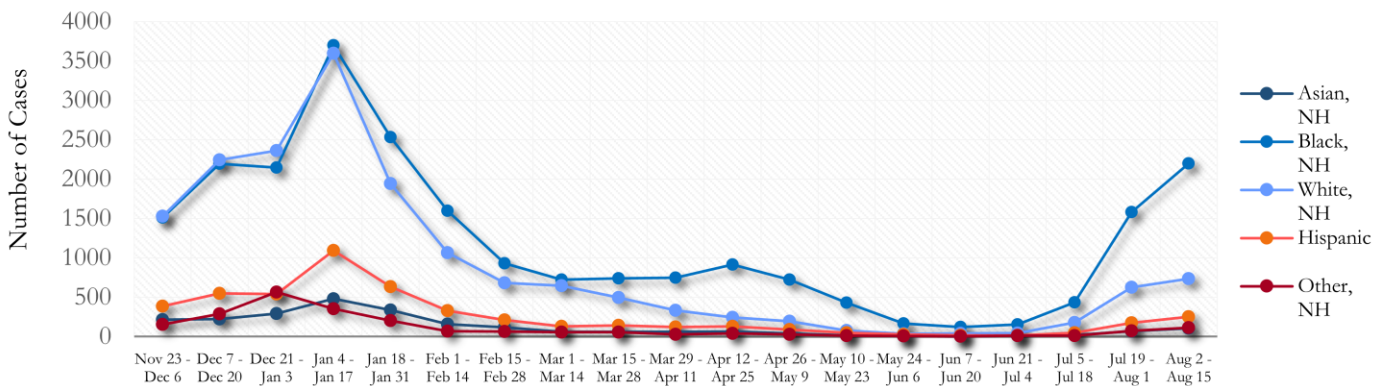


In the past two weeks, Atlanta accounted for the majority of new cases.

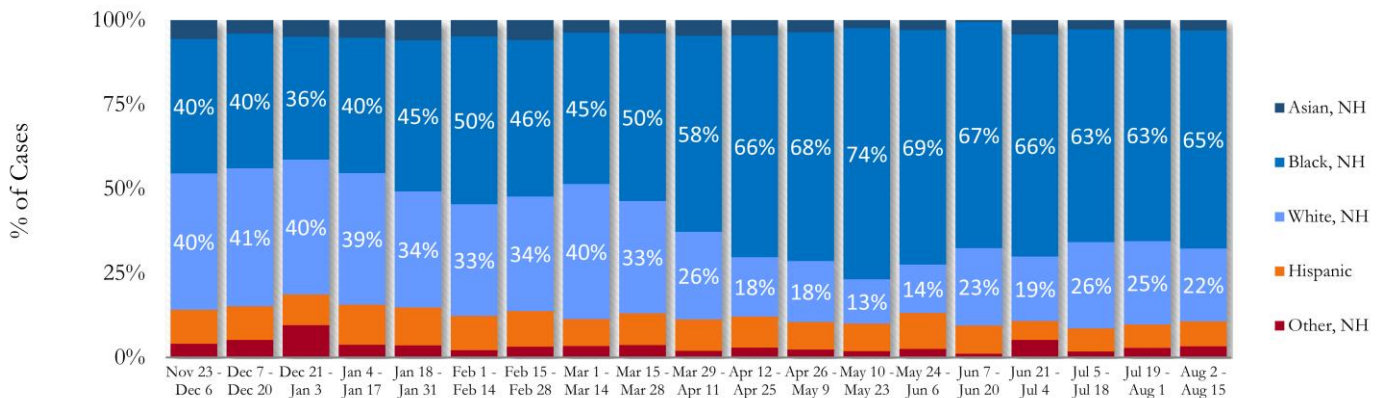
\*North - Includes all Fulton cities north of Atlanta (Alpharetta, Johns Creek, Milton, Mountain Park, Roswell, Sandy Springs)

\*South - Includes all Fulton cities south of Atlanta (Chattahoochee Hills, College Park, East Point, Fairburn, Hapeville, Palmetto, South Fulton, and Union City)

**Fig. 18. Trends in Racial Distribution of COVID-19 Cases in Fulton County by 14-day periods**

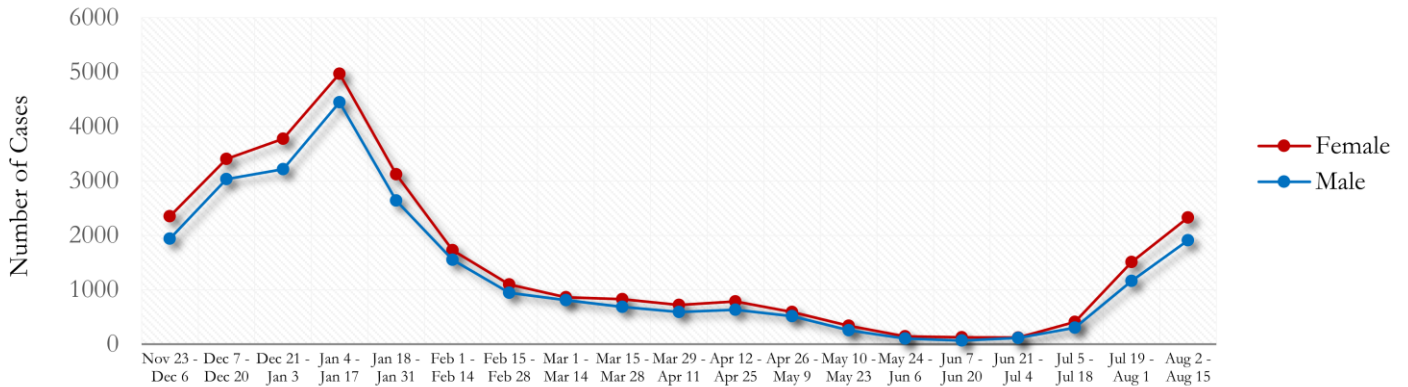


**Fig. 19. Racial Distribution of COVID-19 Cases in Fulton County by 14-day periods**

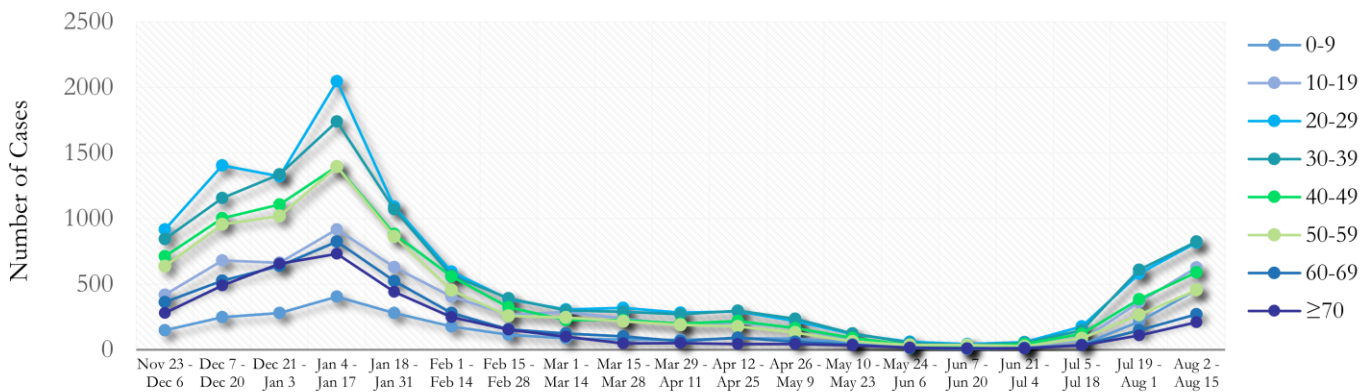


About 7% of all Fulton County COVID cases are missing data on patient race and ethnicity and in the past two weeks, about 20% of cases are missing this data. Percentages do not include the missing data and thus are subject to change as data are cleaned.

**Fig. 20. Trends in Gender Distribution of COVID-19 Cases in Fulton County by 14-day periods**

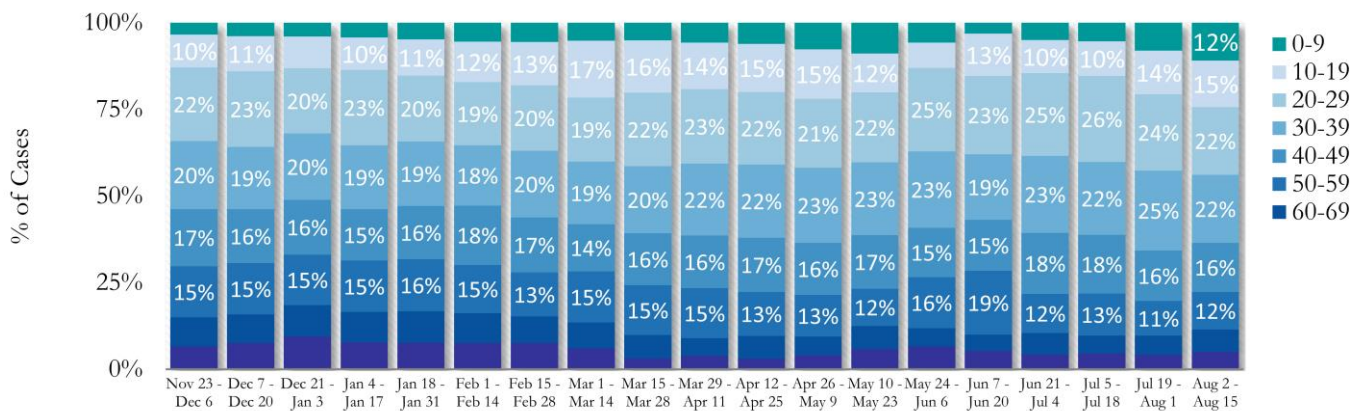


**Fig. 21. Trends in Age Distribution of COVID-19 Cases in Fulton County by 14-day periods**



In the most recent two weeks, 20-29 year olds and 30-39 year olds accounted for the majority of new cases.

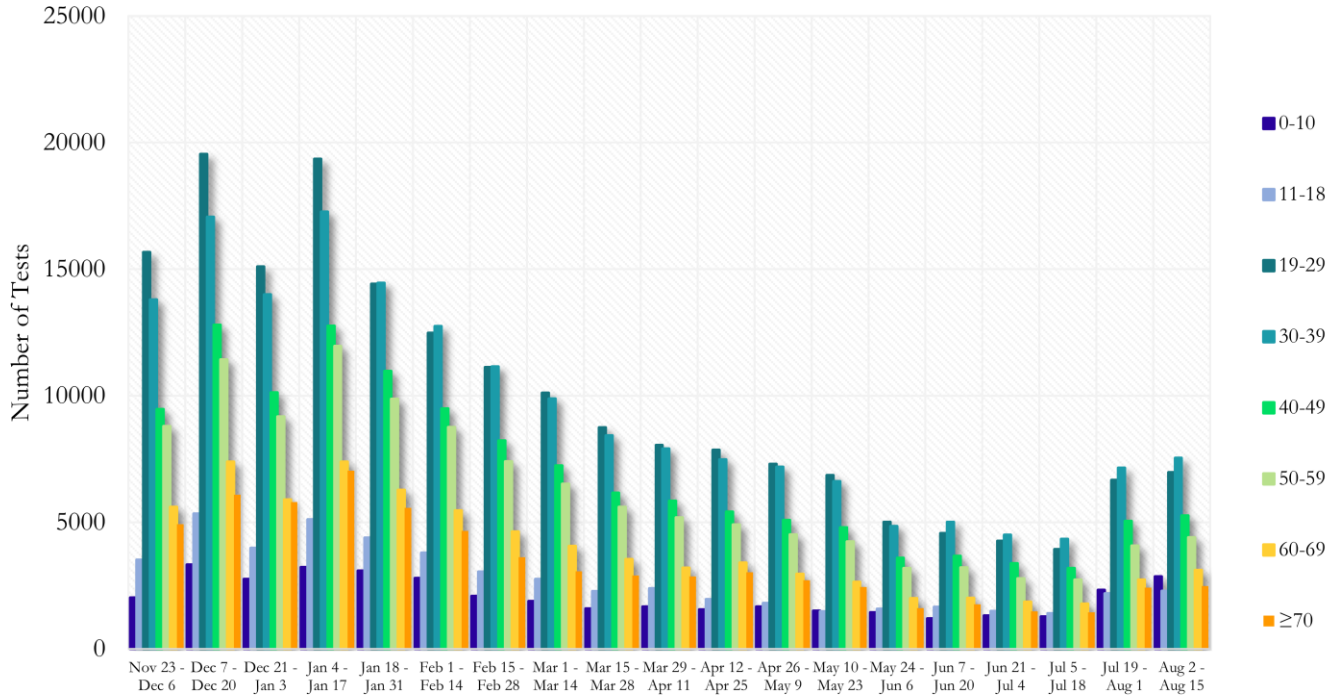
**Fig. 22. Age Distribution of COVID-19 Cases in Fulton County by 14-day periods**



Value labels under 10% are not shown. Percentages do not include the missing data and thus are subject to change as data are cleaned.

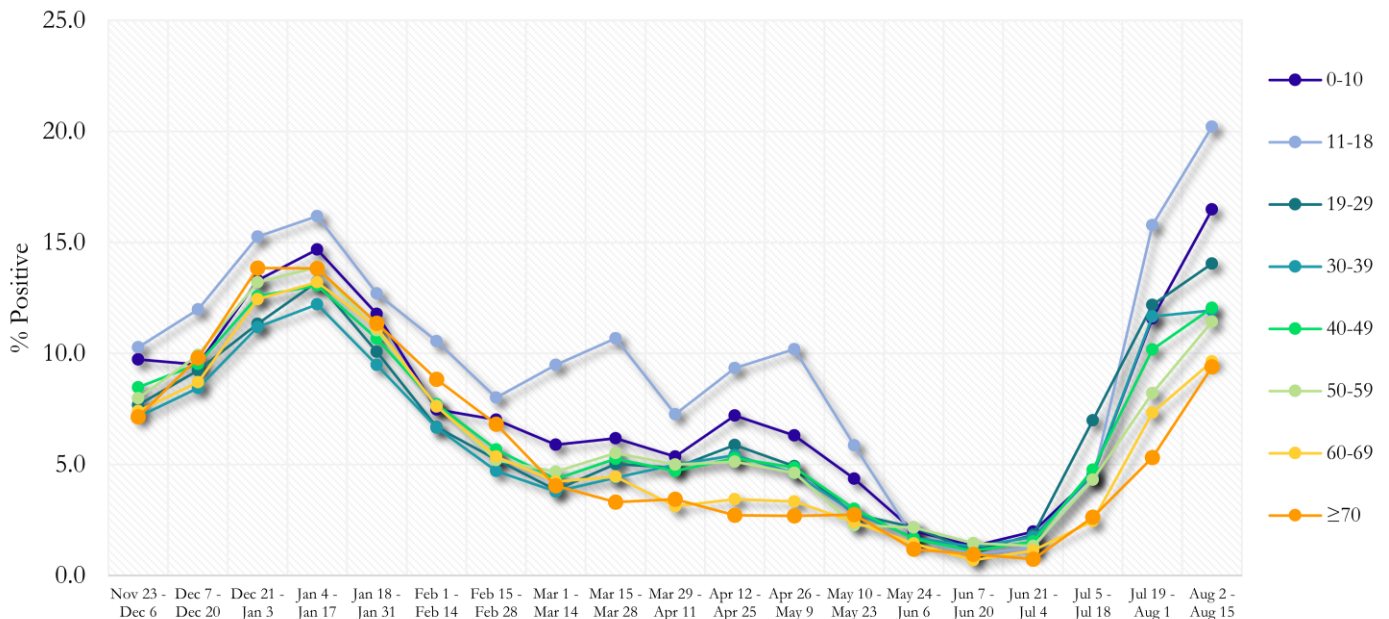
**COVID-19 TESTING AND POSITIVITY IN FULTON COUNTY BY AGE AND RACE**

**Fig. 23. COVID-19 Tests by Age in Fulton County by 14-day Periods**



\*Data on Polymerase Chain Reaction (PCR) tests only included.

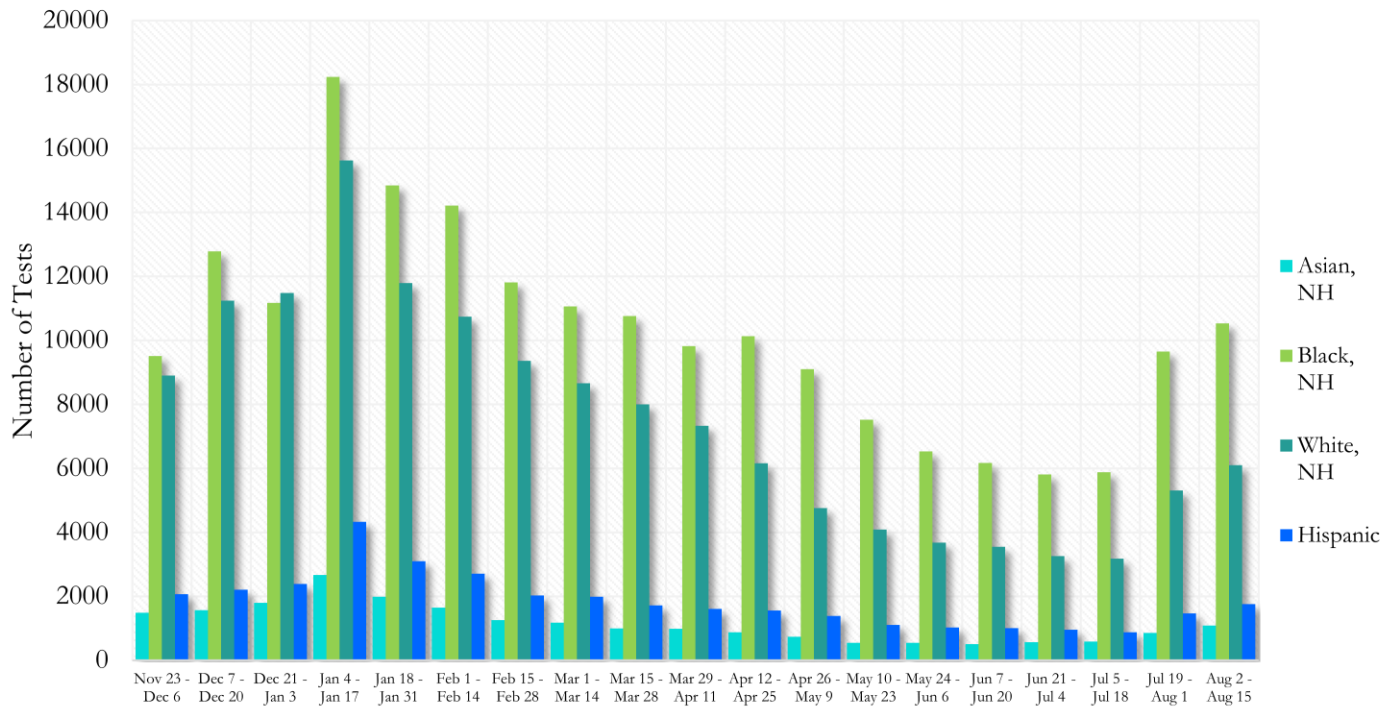
**Fig. 24. Percent Positive COVID-19 Tests by Age Group in Fulton County by 14-day Periods**



\*Data on Polymerase Chain Reaction (PCR) tests only included.

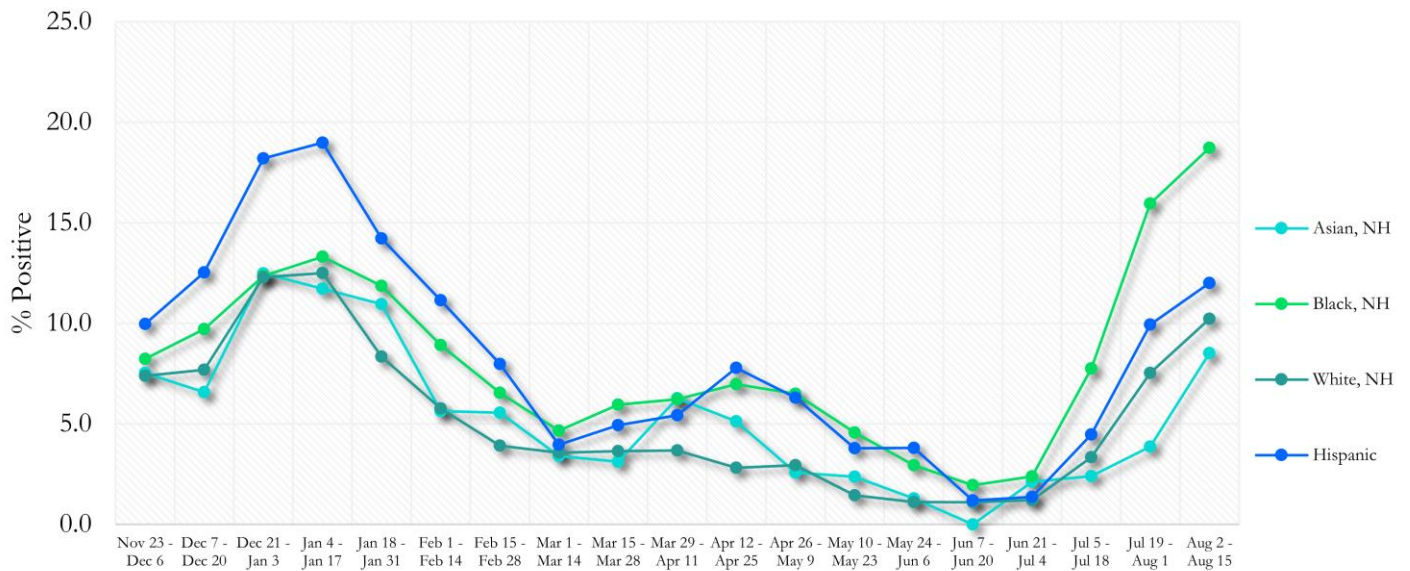


**Fig. 25. COVID-19 Tests by Race and Ethnicity in Fulton County by 14-day Periods**



\*Data on Polymerase Chain Reaction (PCR) tests only included. For the recent two weeks, 48% of test results did not have race/ethnicity information.

**Fig. 26. Percent Positive COVID-19 Tests by Race and Ethnicity in Fulton County by 14-day Periods**



\*Data on Polymerase Chain Reaction (PCR) tests only included.