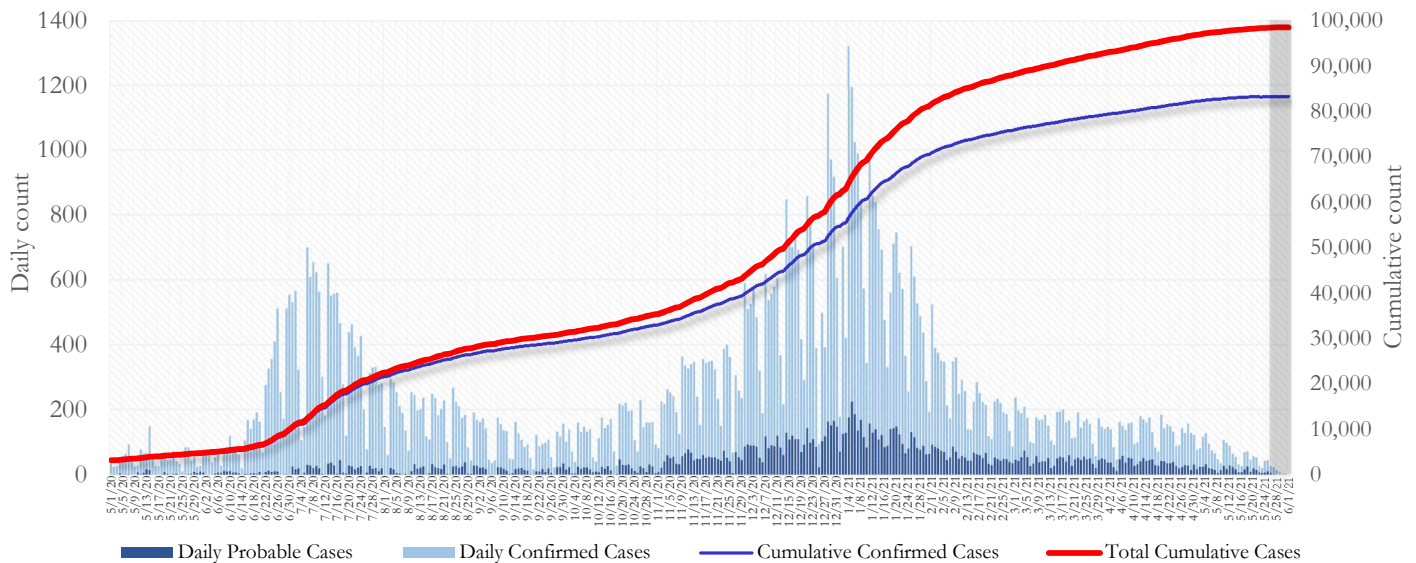


SUMMARY

- As of June 1, 2021, Fulton County has recorded **83,388 confirmed cases** and **15,157 probable cases** of COVID-19.
- Figure 1 shows both confirmed and probable case counts but the ensuing tables and figures use data from **confirmed cases only**.
- As of June 1, 2021, Fulton County has recorded **1,317 confirmed COVID-19 deaths**. 103 deaths are currently under review by GA DPH to confirm cause of death.
- By city, new confirmed COVID-19 case rates range from 13.9 per 100,000 persons (Alpharetta) to 143.1 per 100,000 persons (Union City). **[Fulton County Diagnoses Rates (per 100,000 persons): Cumulative – 7577.5; Incidence – 46.6]**. See map showing incident case rate by ZIP code on Pg.7.
- Among all confirmed cases of COVID-19 in Fulton County since Nov. 1, **4.8% required hospitalization and 1.3% died**.
- Of all PCR testing done in Fulton County between May 9 and May 23, the percent positivity rate was **2.7%**.

Fig 1. Daily and Cumulative Confirmed and Probable COVID-19 cases in Fulton County, GA



Counts shown reflect the number of cases as of 9:00 am on 6/1/21 using the date of first positive sample collection. Where date of sample collection was not available or missing, the date of report creation in GA SendSS was used instead. The Georgia Department of Health defines a confirmed cases as someone with a positive molecular test, also known as PCR. A probable case is defined as a positive antigen test, though probable cases are still considered positive cases and individuals who tested positive through an antigen test should follow all DPH isolation and quarantine guidance. **Note:** Delays in data reporting may cause changes in data counts, particularly in the shaded portion. Data throughout this report are preliminary and subject to ongoing data cleaning processes, and thus are subject to change.

THE FOLLOWING ANALYSES (PAGES 1-19) ARE USING DATA ON CONFIRMED CASES ONLY.

DISTRIBUTION OF COVID-19 CASES BY REGION

New cases: 47% of the new COVID-19 cases in the past 2 weeks occurred in Atlanta while 15% and 37% occurred in the Northern and Southern regions of the county respectively.

Fulton Region	% Cumulative count	% New cases*
Atlanta	42.7%	47.3%
North ¹	33.7%	14.6%
South ²	20.2%	36.7%
Unincorporated/Unknown	3.4%	1.4%

¹Includes all Fulton County cities north of Atlanta (Alpharetta, Johns Creek, Milton, Mountain Park, Roswell, Sandy Springs.) ²Includes all cities south of Atlanta (Chattahoochee Hills, College Park, East Point, Fairburn, Hapeville, Palmetto, South Fulton, and Union City) ***New cases:** Cases diagnosed in the past 2 weeks only (between 5/12/21 – 5/25/21).

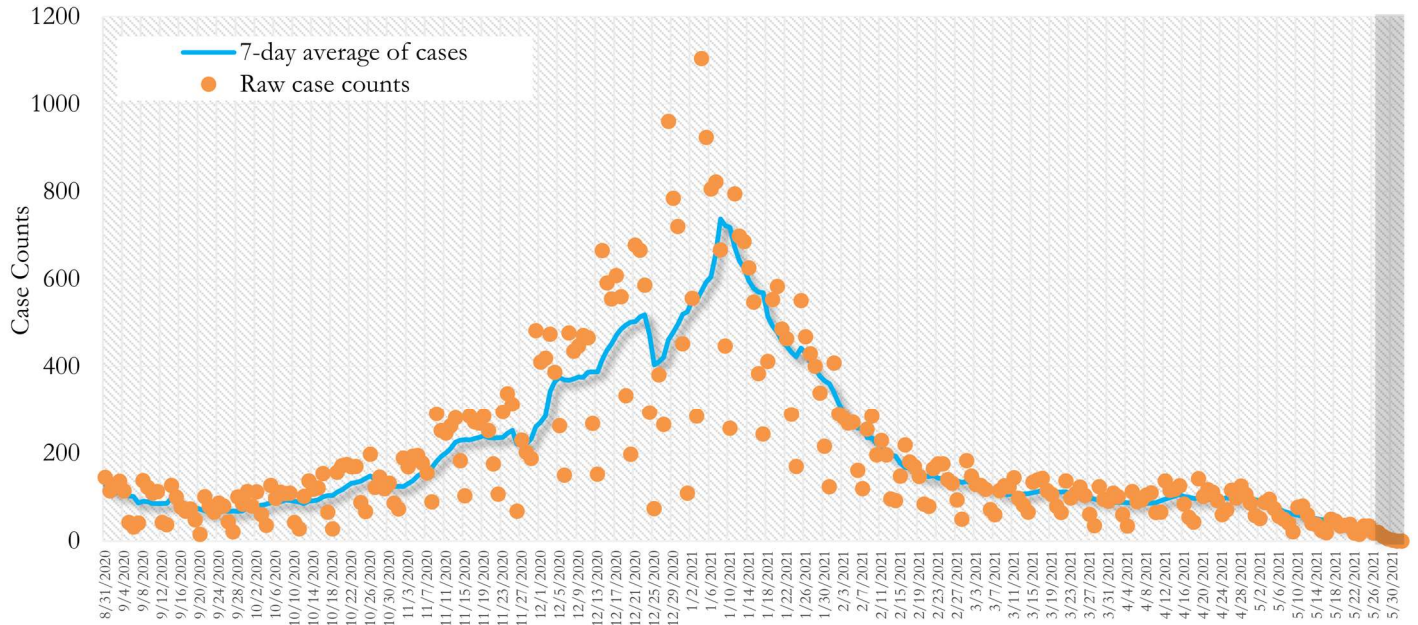
In the recent two week reporting period (5/12-5/25), there were fewer new cases of COVID-19 in Fulton County than the previous two weeks (4/28-5/11).



**Delayed a week to account for testing results turnaround time.*

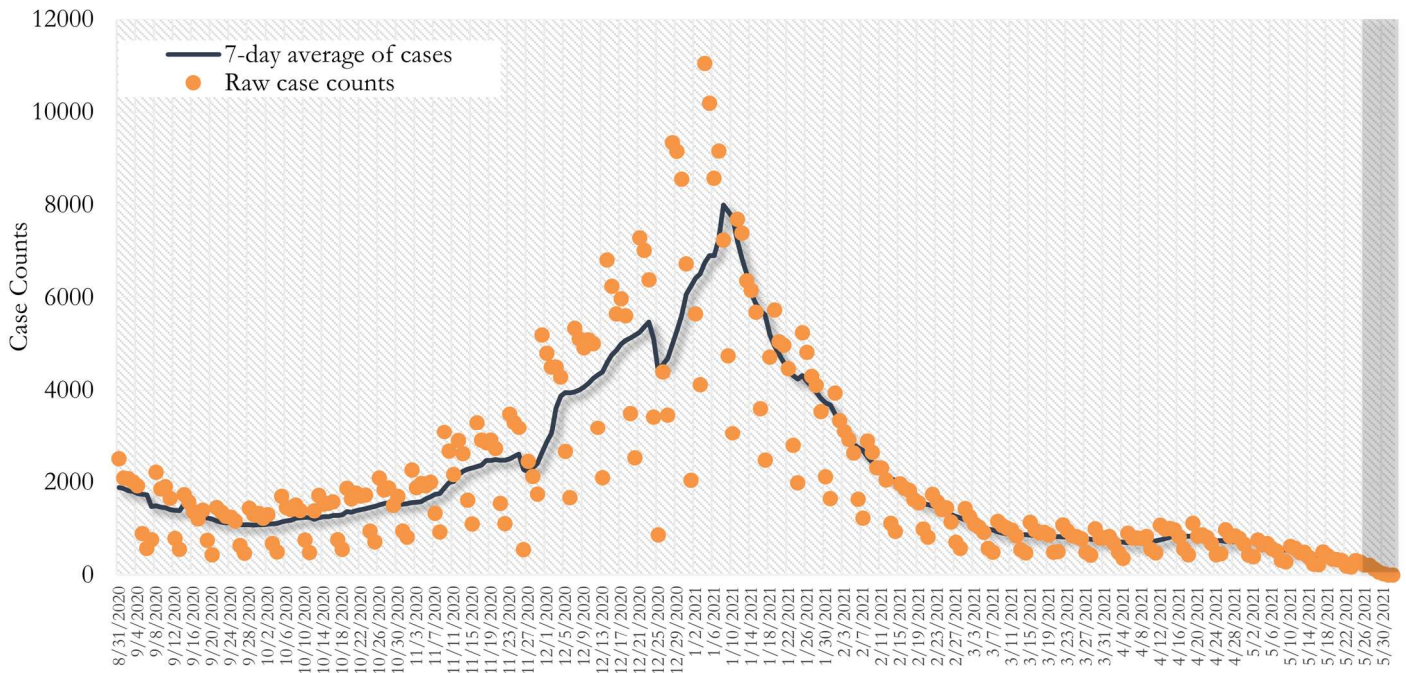
TRENDS IN COVID-19 CASES, HOSPITALIZATIONS AND DEATHS (7-DAY MOVING AVE.)

Fig. 2. New COVID-19 Cases in Fulton County Daily (Averaged over 7 days)



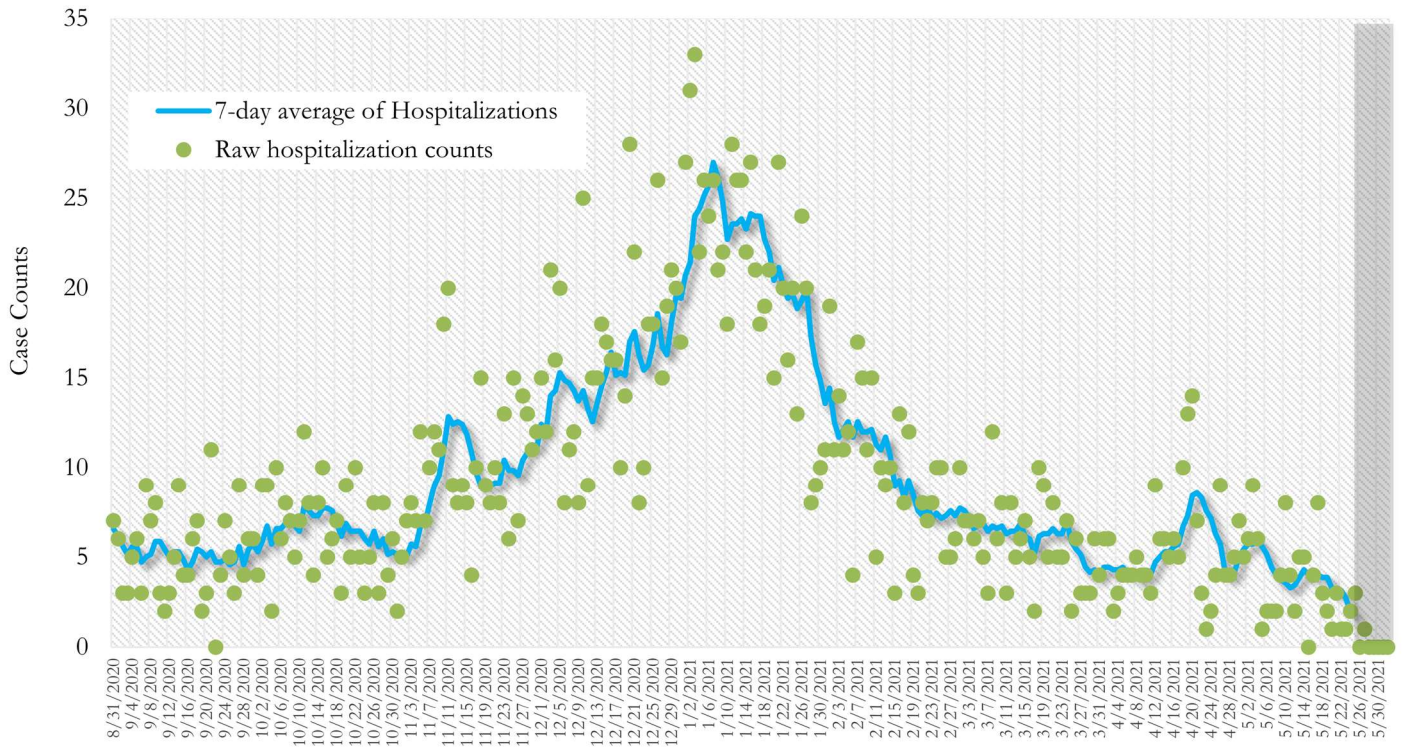
*Date of collection of first positive sample used (report creation date used where sample collection date is missing). Graph above reflects the trend in COVID-19 diagnosis. Due to the high volume of testing in recent weeks, there have been delays in reporting lab results. Thus, the trend is subject to change as more lab results get added to the state surveillance database.

Fig. 3. New COVID-19 Cases in Georgia State Daily (Averaged over 7 days)



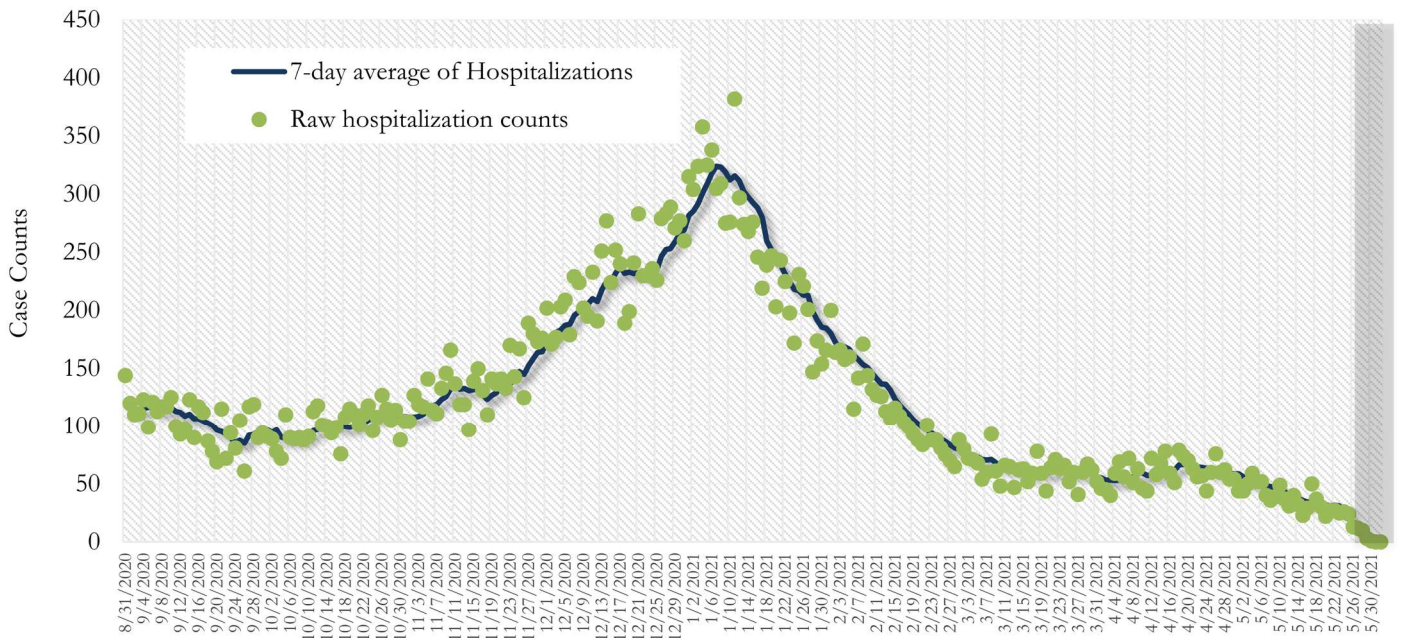
*Date of collection of first positive sample used (report creation date used where sample collection date is missing). Graph above reflects the trend in COVID-19 diagnosis. Due to the high volume of testing in recent weeks, there have been delays in reporting lab results. Thus, the trend is subject to change as more lab results get added to the state surveillance database.

Fig. 4. COVID-19 Hospitalizations in Fulton County Daily (Averaged over 7 days)



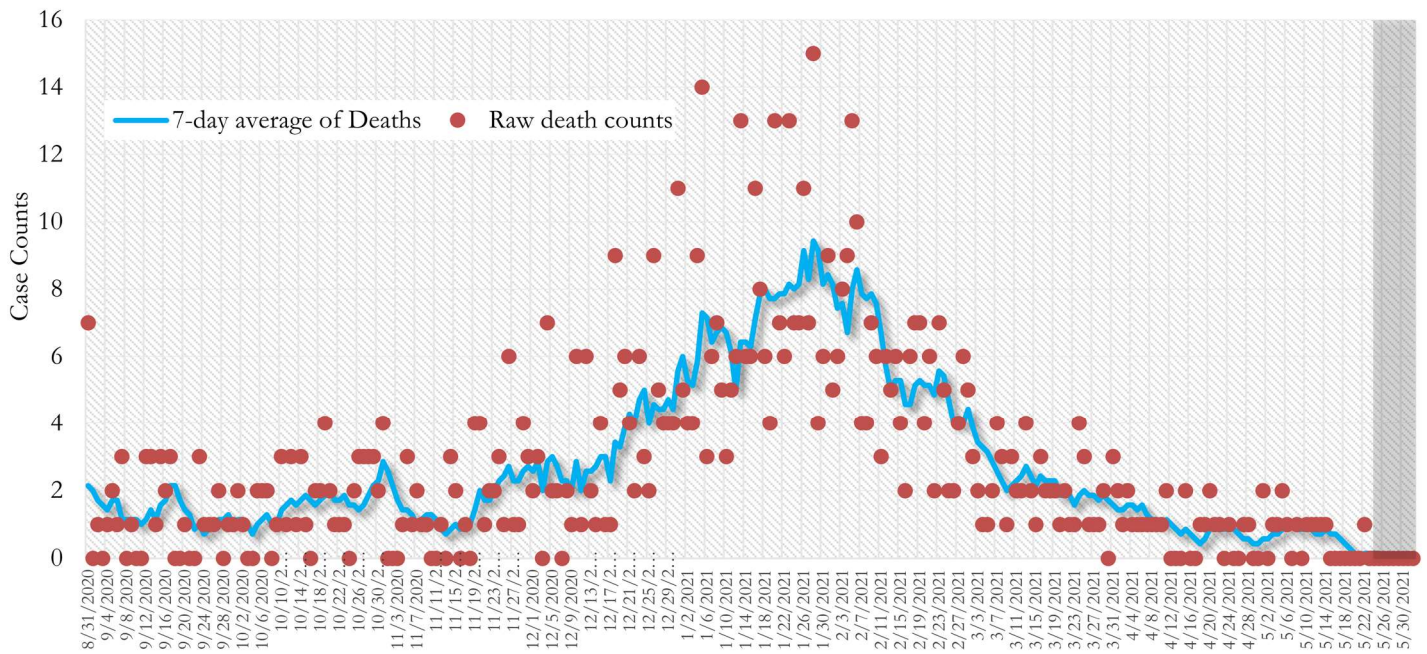
*Reported date of hospital admission used. Graph above reflects the trend in COVID-19 hospitalizations. Due to the high volume of new cases being added daily, there have been delays in reporting hospitalization data. Thus, the trend is likely to change as more hospitalization data is reported in the state surveillance database.

Fig. 5. COVID-19 Hospitalizations in Georgia State Daily (Averaged over 7 days)



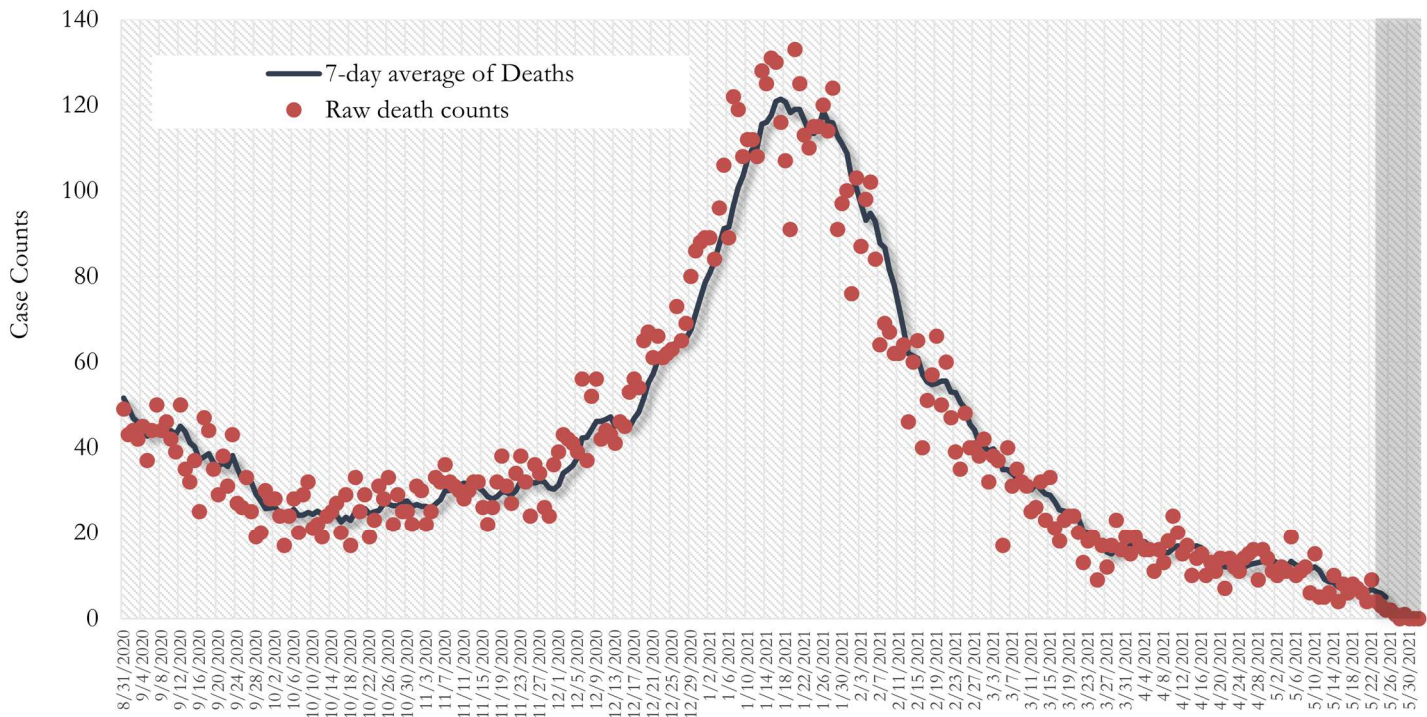
*Reported date of hospital admission used. Graph above reflects the trend in COVID-19 hospitalizations. Due to the high volume of new cases being added daily, there have been delays in reporting hospitalization data. Thus, the trend is likely to change as more hospitalization data is reported in the state surveillance database.

Fig. 6. COVID-19 Deaths in Fulton County Daily (Averaged over 7 days)



*Reported date of death used. Graph above reflects the trend in deaths attributed to COVID-19. The trend is likely to change as more data on deaths among persons with COVID-19 is reported in the state surveillance database.

Fig. 7. COVID-19 Deaths in Georgia State Daily (Averaged over 7 days)



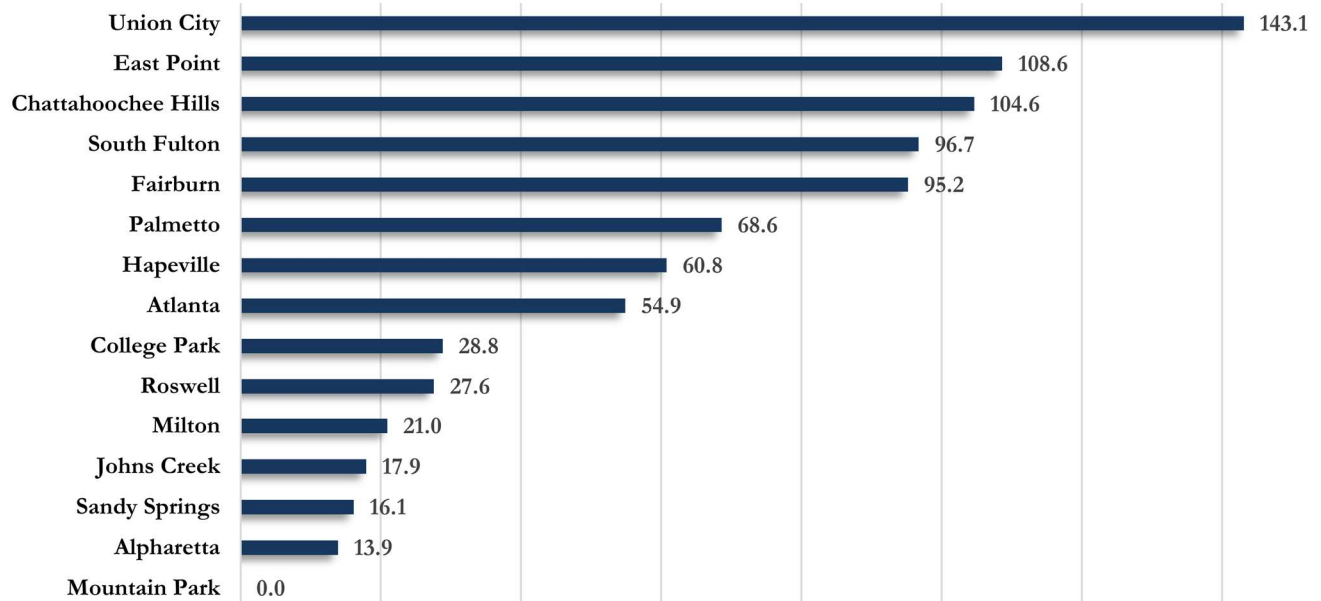
*Reported date of death used. Graph above reflects the trend in deaths attributed to COVID-19. The trend is likely to change as more data on deaths among persons with COVID-19 is reported in the state surveillance database.

COVID-19 CASE COUNTS AND RATES BY CITY

	Recent 14-day reporting period ¹	Preceding 14-day reporting period	% Change from preceding 14 days (%) ²	Incidence Rate ³
	5/12-5/25	4/28-5/11		
Alpharetta	<10	40	↓ 77.5%	13.9
Atlanta	242	449	↓ 46.1%	54.9
Chattahoochee Hills	<10	0	-	104.6 ⁴
College Park	<10	19	↓ 78.9%	28.8
East Point	38	59	↓ 35.6%	108.6
Fairburn	14	20	↓ 30.0%	95.2
Hapeville	<10	<10	↓ 55.6%	60.8
Johns Creek	15	23	↓ 34.8%	17.9
Milton	<10	25	↓ 68.0%	21.0
Mountain Park	0	<10	-	0.0
Palmetto	<10	<10	↓ 62.5%	68.6
Roswell	26	81	↓ 67.9%	27.6
Sandy Springs	17	82	↓ 79.3%	16.1
South Fulton	92	170	↓ 45.9%	96.7
Union City	30	42	↓ 28.6%	143.1
Unknown	<10	<10	-	-

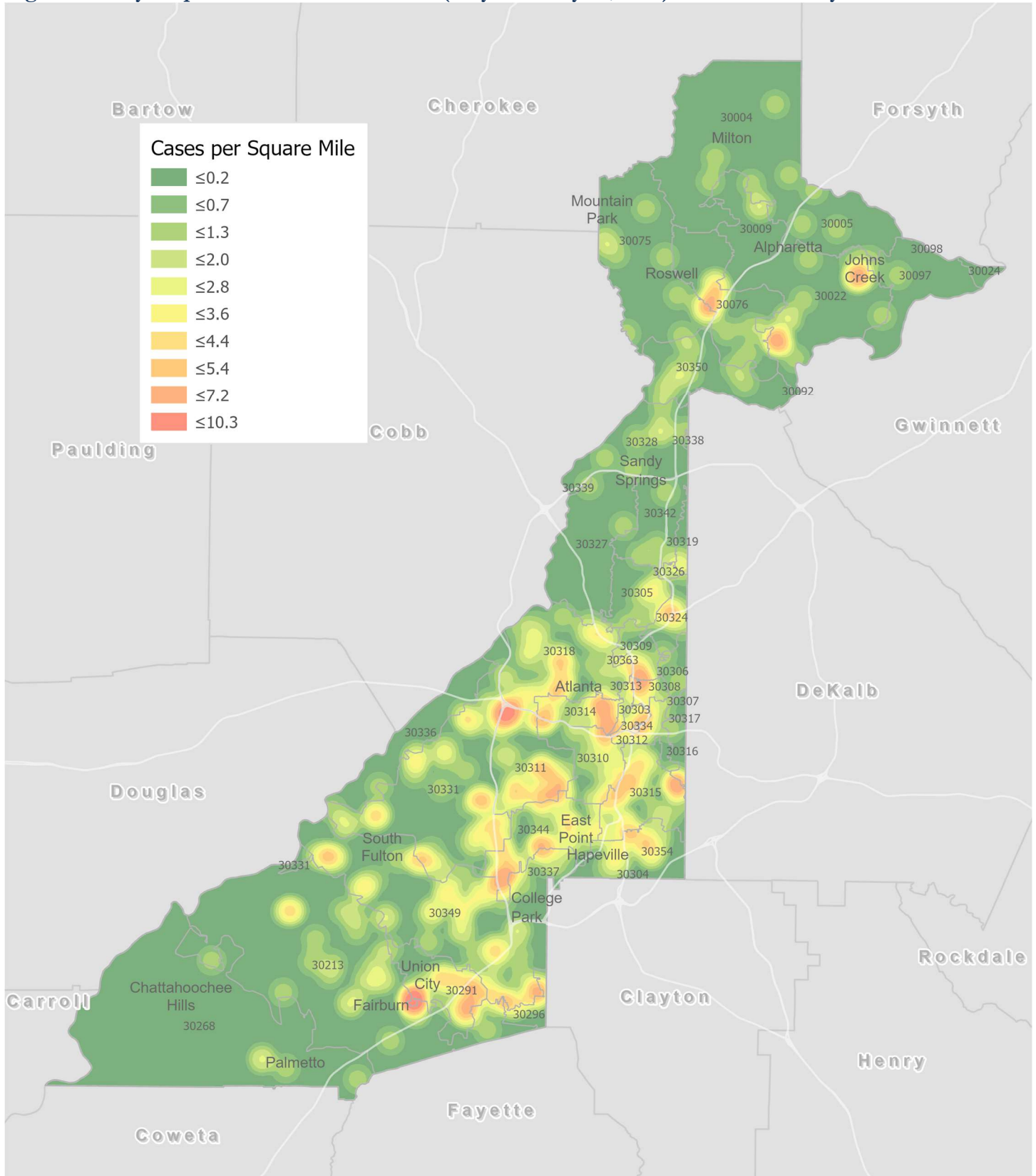
¹**New cases:** Cases diagnosed in most recent 14 days (based on reported dates of positive sample collection). To allow for lag in reporting results of new diagnoses from samples collected in the most recent week, data used for incident diagnoses analyses were moved back by one week. ²**% change:** These reflect the percentage increase or decrease in new diagnoses between the 14 days preceding the most recent 7 days and the 14 days preceding that. ³**(Incidence) Rate:** Rate of new diagnoses in the last 14 day period preceding the immediate past week. ****Data cleaning** (either during case interviews or address geo-coding) may lead to reassignment of few cases from one territory to another based on their corrected addresses. These may appear as “decreases” when compared to the previous counts. These do not reflect errors in the data collection or analysis process but only reflect the minor day-to-day fluctuations in case counts that arise in an evolving public health database like COVID’s. ⁴Incidence rate is skewed high due to small population. **Note:** All data reported are preliminary and subject to change.

Fig. 8. Incidence Rates by Fulton City for Recent 14-day Reporting Period



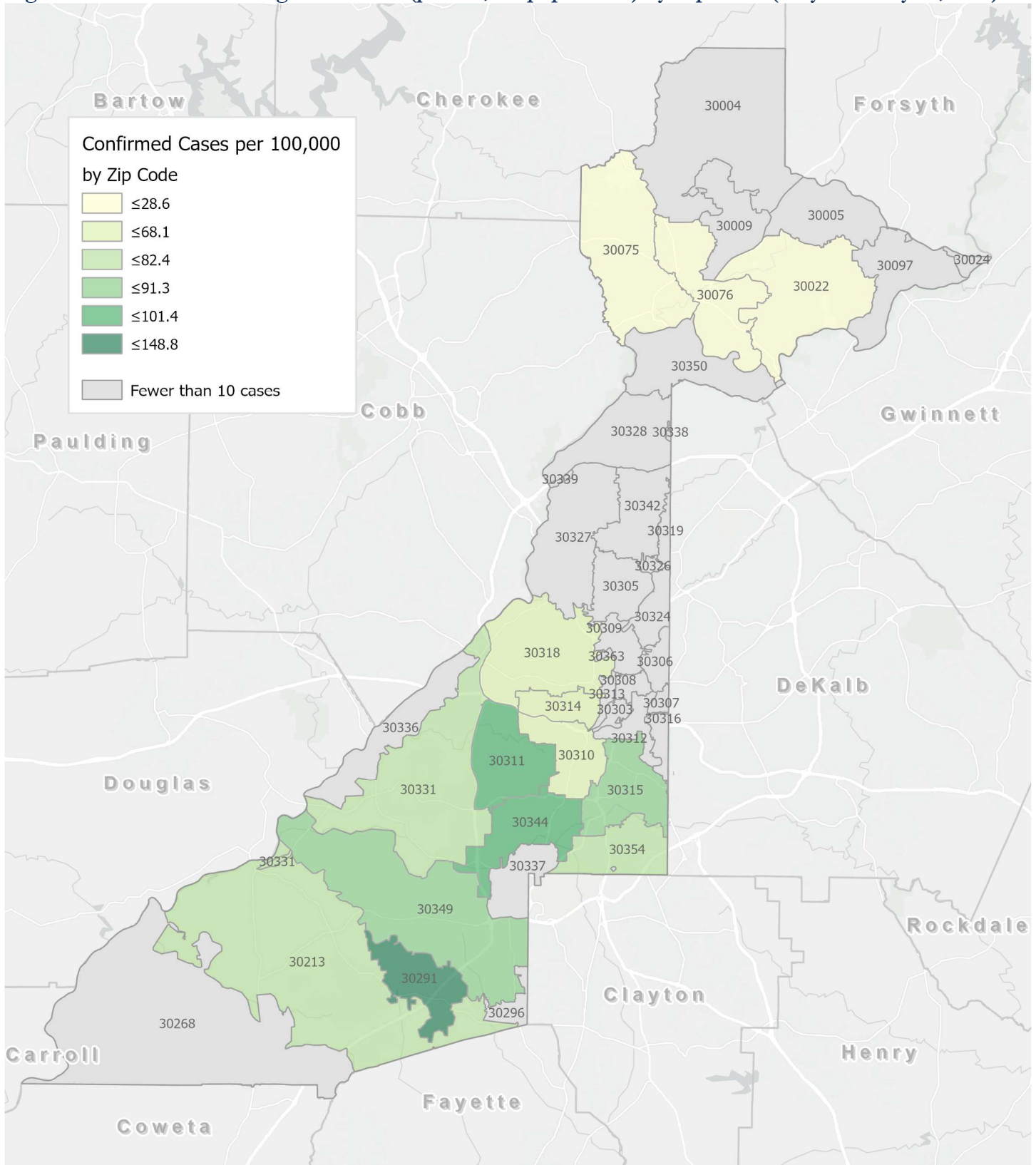
*Rates shown are per 100,000 persons | All data shown are preliminary and are subject to change as testing results get updated.

Fig. 9. Density Map – New COVID-19 Cases (May 12 – May 25, 2021) in Fulton County



New COVID-19 cases: Cases diagnosed in most recent 14 days (based on reported dates of positive sample collection). To allow for lag in reporting results of positive cases from samples collected in the immediate past 7 days, data used for incident diagnoses analyses are moved back by one week. Map reflects new COVID-19 cases diagnosed between May 12th and May 25th, 2021 across Fulton County, excluding LTCF cases.

Fig. 10. New COVID-19 Diagnoses Rates (per 100,000 population) by Zip Code (May 12 – May 25, 2021)



*Rates shown are per 100,000 populations.

New COVID-19 cases: Cases diagnosed in most recent 14 days (based on reported dates of positive sample collection). To allow for lag in reporting results of positive cases from samples collected in the immediate past 7 days, data used for incident diagnoses analyses are moved back by one week. Data used excludes outbreak-related cases at long-term care facilities and map shown reflects only the new non-LTCF cases diagnosed between the dates shown in map title. See page 12 for zip code break down table.

COVID-19 NEW CASE¹ COUNTS BY ZIP CODE

Zip Code	Recent 14-day reporting period (5/12– 5/25)	Previous 14-day reporting period (4/28– 5/11)	% Change between reporting periods ²
All Fulton	572	1051	↓ 45.6%
30004	<10	29	↓ 69.0%
30005	<10	14	↓ 85.7%
30009	<10	12	↓ 66.7%
30022	26	31	↓ 16.1%
30023	0	0	-
30024	0	<10	↓ 100.0%
30075	12	38	↓ 68.4%
30076	12	42	↓ 71.4%
30080	0	0	-
30097	<10	<10	-
30098	0	0	-
30135	0	0	-
30138	0	0	-
30139	0	0	-
30213	35	82	↓ 57.3%
30268	<10	<10	-
30291	37	35	↑ 5.7%
30296	<10	14	↓ 92.9%
30301	0	0	-
30303	<10	<10	-
30305	<10	17	↓ 58.8%
30306	<10	<10	-
30307	0	<10	↓ 100.0%
30308	<10	<10	-
30309	<10	21	↓ 66.7%
30310	18	29	↓ 37.9%
30311	48	72	↓ 33.3%
30312	<10	22	↓ 63.6%
30313	<10	10	↓ 50.0%
30314	19	40	↓ 52.5%
30315	39	35	↑ 11.4%
30316	<10	<10	-
30318	42	75	↓ 44.0%
30319	<10	10	↓ 60.0%
30321	0	0	-
30324	<10	22	↓ 59.1%
30326	<10	<10	-
30327	<10	12	↓ 66.7%
30328	<10	31	↓ 74.2%
30331	50	82	↓ 39.0%
30334	<10	0	-
30336	0	<10	↓ 100.0%
30337	<10	12	↓ 41.7%

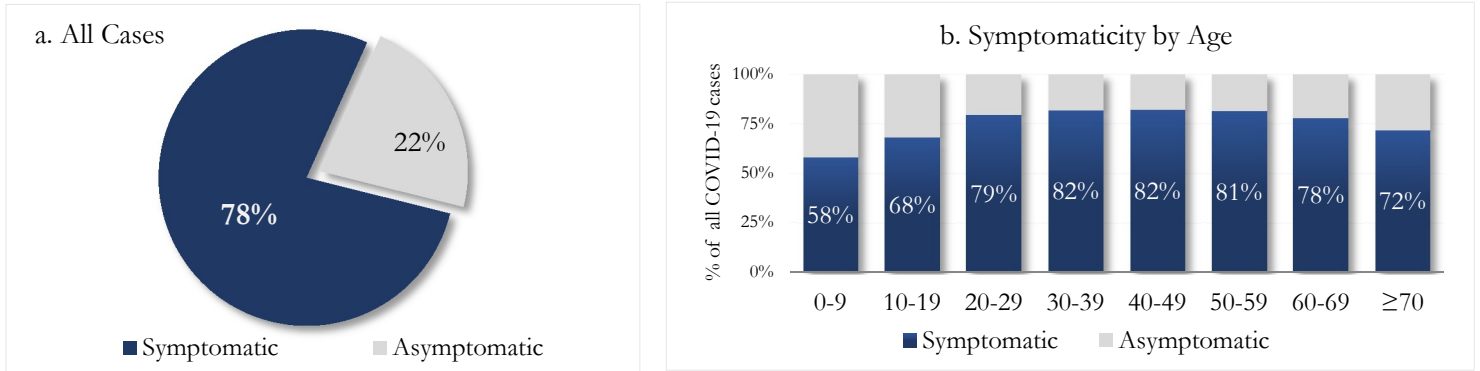
Zip Code	Recent 14-day reporting period (5/12– 5/25)	Previous 14-day reporting period (4/28– 5/11)	% Change between reporting periods
30338	0	0	-
30339	<10	<10	-
30340	0	0	-
30341	0	0	-
30342	<10	18	↓ 61.1%
30344	40	53	↓ 24.5%
30345	0	0	-
30349	58	81	↓ 28.4%
30350	<10	34	↓ 79.4%
30354	13	22	↓ 40.9%
30358	0	0	-
30363	<10	<10	-
30374	<10	0	-
30606	0	0	-
31131	0	0	-
31150	0	0	-
Unknown	0	<10	-

¹**New cases:** Cases diagnosed in most recent 28 days (based on reported dates of positive sample collection). To allow for lag in reporting results of new diagnoses from samples collected in the most recent week, data used for incident diagnoses analyses were moved back by one week. ²**Percent change:** These reflect the percentage increase or decrease of new diagnoses between the 14 days preceding the past 7 days and the 14 days preceding that. Changes in ZIP codes with less than 10 cases in both 2 week intervals are not reported.

REPORTING SYMPTOMS AMONG PERSONS WITH COVID-19 IN FULTON

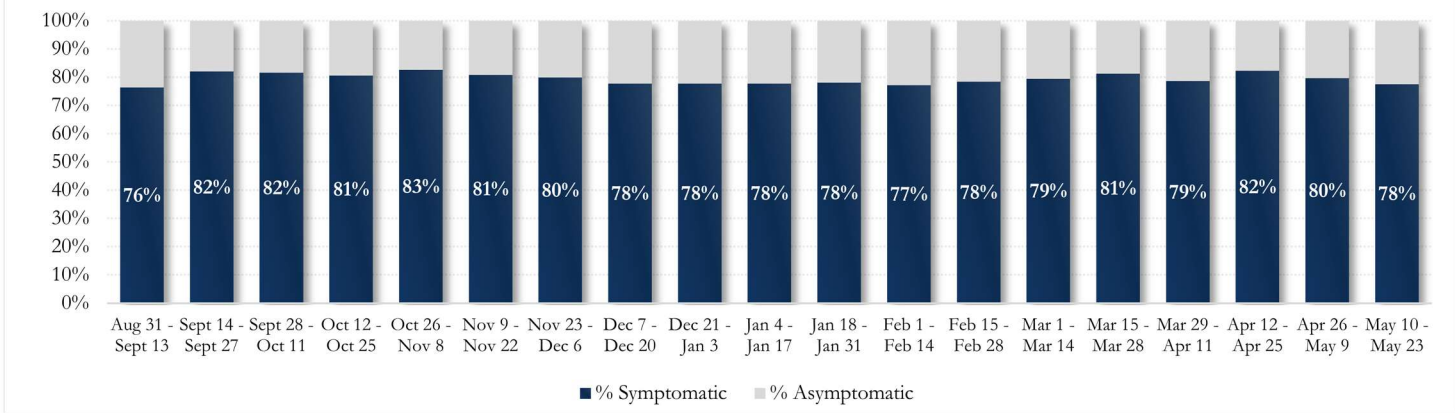
People with COVID-19 have reported a wide range of symptoms ranging from mild symptoms to severe illness. Symptoms may appear 2-14 days after exposure to the virus. Symptoms reported include: cough, shortness of breath/difficulty breathing, fever, chills, muscle pain, headache, sore throat, congestion, nausea or vomiting, diarrhea, fatigue, or new loss of taste or smell – Centers for Disease Control and Prevention (CDC) – Centers for Disease Control and Prevention (CDC) <https://www.cdc.gov/coronavirus/2019-ncov/symptoms-testing/symptoms.html>

Fig. 11a & b. Total Proportion Reporting Symptoms in Fulton



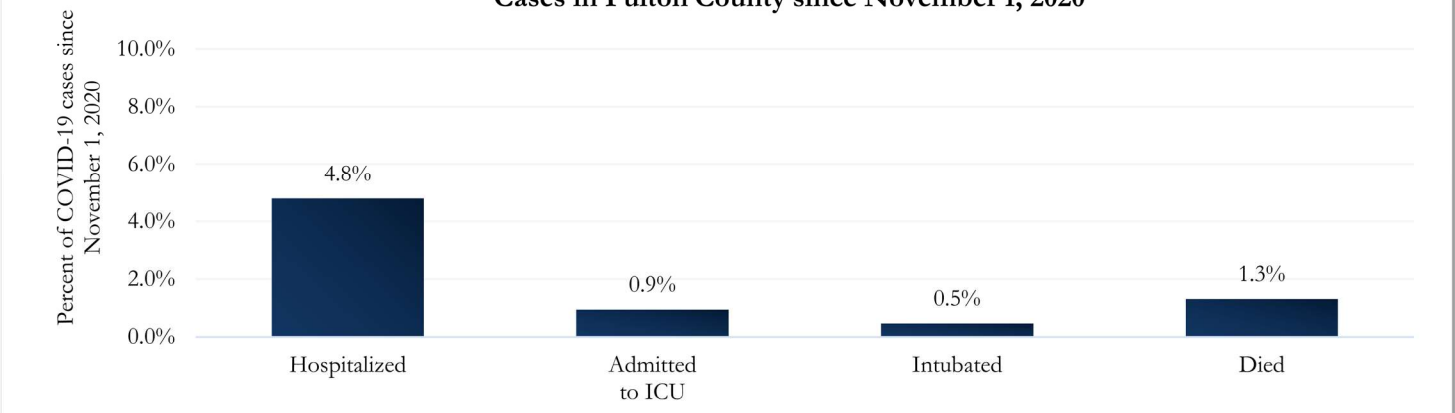
***COVID-19 cases who have been case interviewed or had medical charts reviewed as of 6/1/21 only. n = 54,893 ***

Fig 12. Total Proportion Reporting Symptoms in Fulton County Over Time



COVID-19 HOSPITALIZATIONS, ICU ADMISSIONS AND DEATHS IN FULTON

Fig. 13. Hospitalizations, ICU Admissions, Intubations, and Deaths among COVID-19 Cases in Fulton County since November 1, 2020



DEMOGRAPHIC DISTRIBUTIONS – COVID-19 CASES AND DEATHS

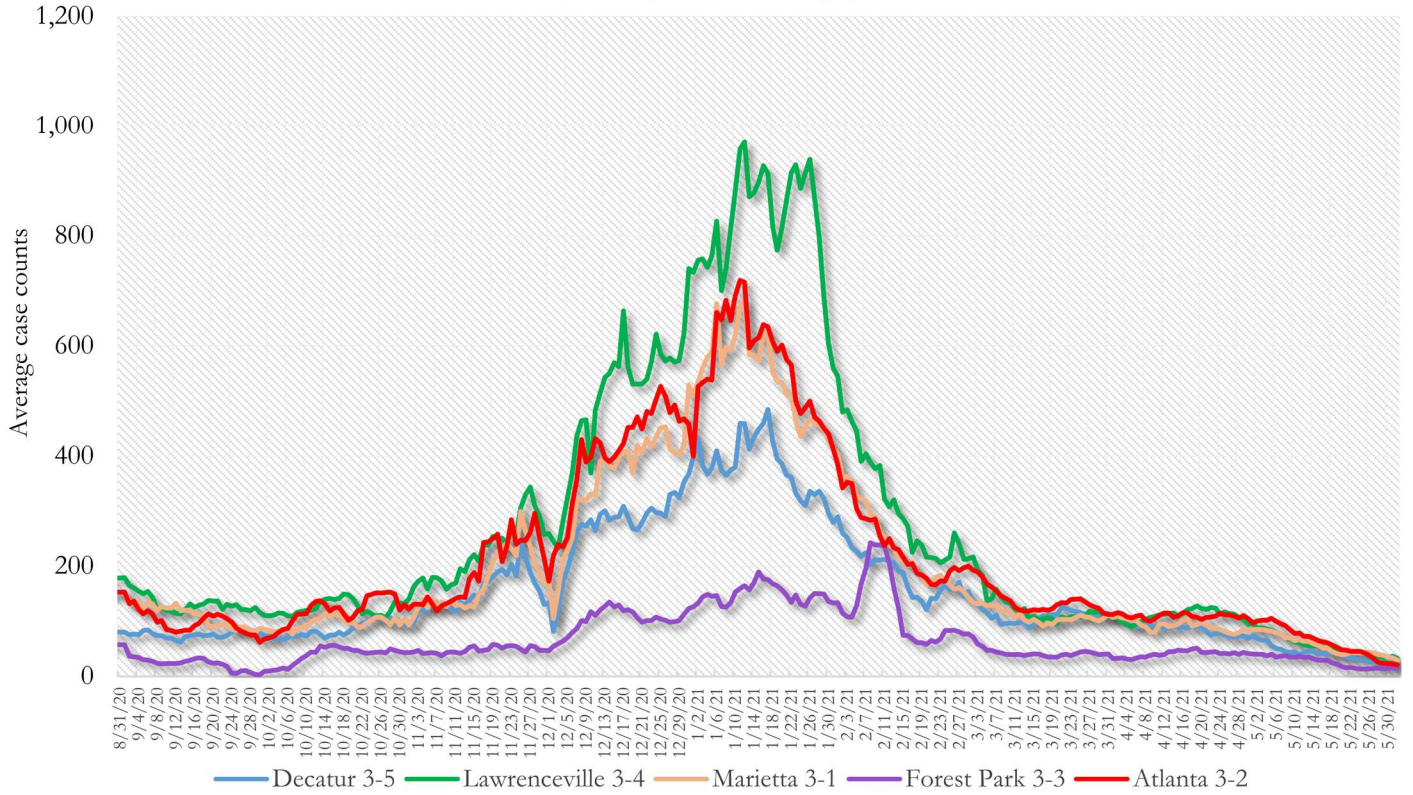
Table A - Cumulative and recent confirmed COVID-19 case and death counts by gender, age, and race/ethnicity in Fulton County, Georgia. Past 28 day period refers to April 28 – May 25, 2021

	Total Confirmed Cases	% of Total Cases	Confirmed Cases past 28 days	% of Confirmed Cases past 28 days	Total Confirmed Deaths	% of Total Deaths	Confirmed Deaths past 28 days	% of Confirmed Deaths past 28 days
TOTAL	83388		1525		1317		15	
Female	43968	52.7%	836	54.8%	623	47.3%	<10	46.7%
Male	38996	46.8%	684	44.9%	694	52.7%	<10	53.3%
Unknown*	424	<1%	<10	<1%	0	-	0	-
0-9	3107	3.7%	126	8.3%	0	-	0	-
10-19	8648	10.4%	218	14.3%	<10	<1%	0	-
20-29	18790	22.5%	306	20.1%	<10	<1%	0	-
30-39	16020	19.2%	317	20.8%	26	2.0%	0	-
40-49	12742	15.3%	231	15.1%	39	3.0%	0	-
50-59	11337	13.6%	167	11.0%	117	8.9%	<10	33.3%
60-69	6638	8.0%	86	5.6%	240	18.2%	<10	26.7%
>70	6028	7.2%	72	4.7%	889	67.5%	<10	40.0%
Unknown*	78	<1%	<10	<1%	0	-	0	-
Asian, NH	3041	3.6%	42	2.8%	22	1.7%	0	-
Black, NH	34458	41.3%	998	65.4%	814	61.8%	11	73.3%
White, NH	27252	32.7%	191	12.5%	421	32.0%	<10	20.0%
Hispanic, all races	8606	10.3%	111	7.3%	55	4.2%	0	-
Other, NH	3602	4.3%	24	1.6%	<10	<1%	<10	6.7%
Unknown*	6429	7.7%	159	10.4%	0	-	0	-

*Unknown includes cases not yet interviewed. 28 days delayed by seven to account for lag in reporting lab results. Deaths refer to all persons who had a positive PCR test result for Covid-19 and there is evidence that COVID-19 was the cause of death or a significant contributor to their death.

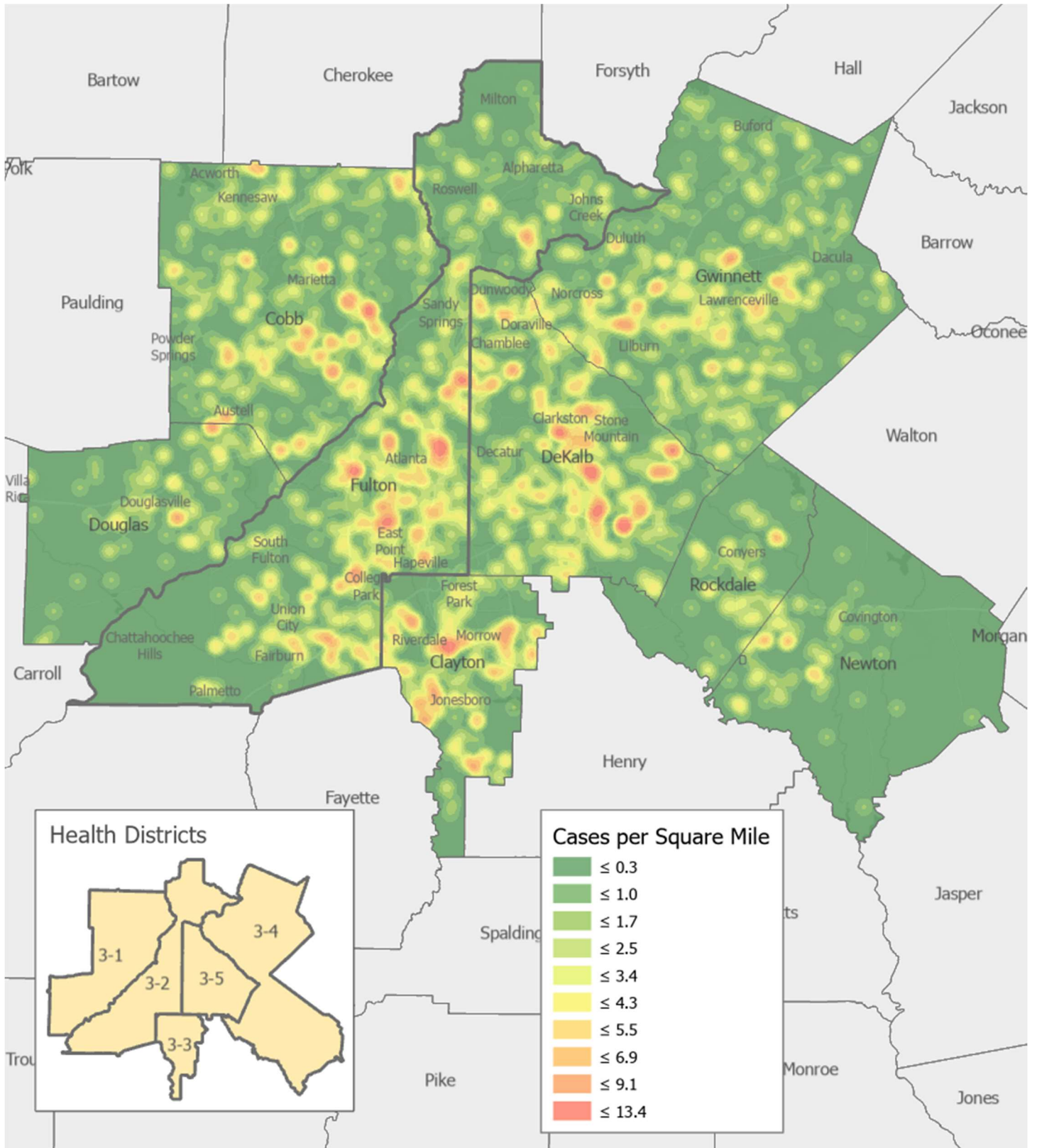
COVID-19 CASE TRENDS IN FULTON AND SURROUNDING DISTRICTS

**Fig. 14. Daily Case Counts for Atlanta Metro Districts
(Averaged over 7 days)**



*Graph shows the average number of cases calculated from the daily cumulative case counts in the metro Atlanta districts. Increases in daily cumulative case counts may include cases diagnosed earlier during the pandemic but were only recently reported to the state as cases diagnosed belonging to these districts.

Fig. 15. COVID-19 Cases in Fulton County and Surrounding Districts (May 12 – May 25, 2021)



The following data are updated every two weeks.

Last updated 5/25/2021

Data are from confirmed cases and PCR testing only.

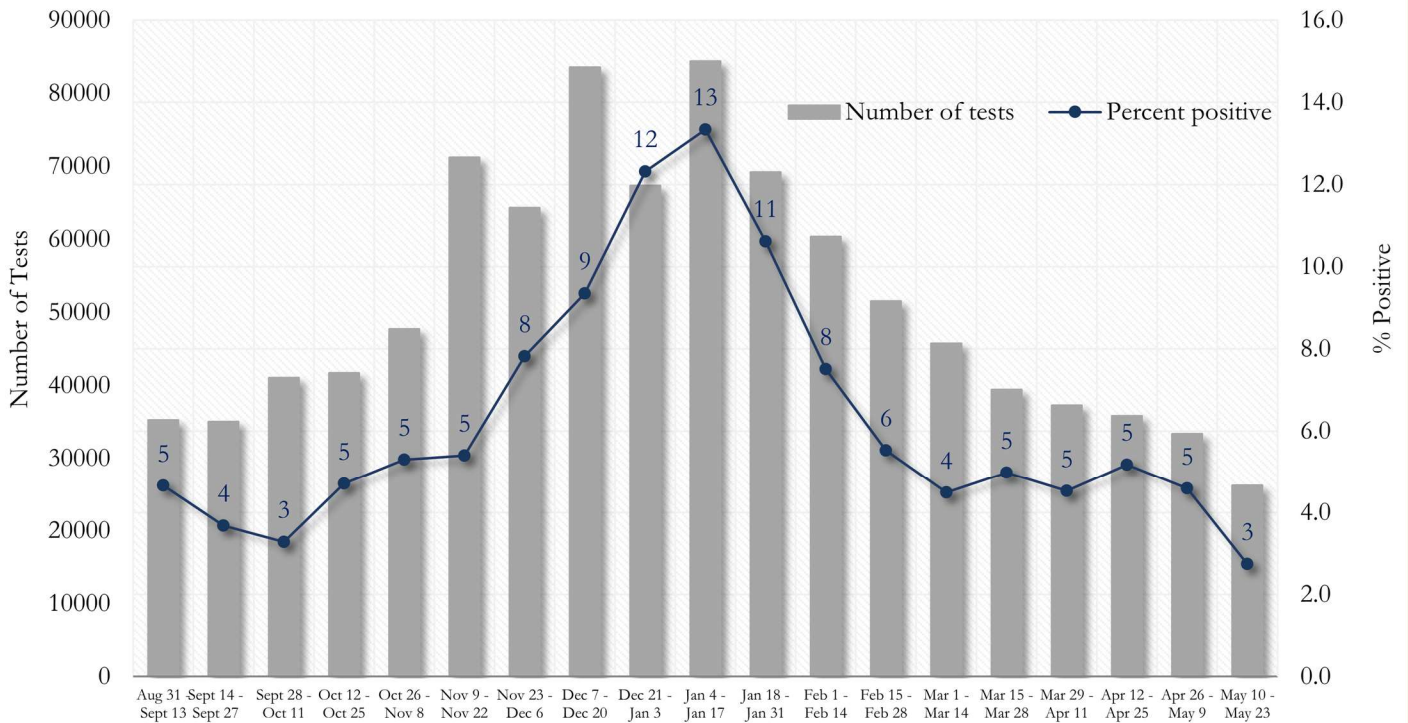
These data are generated using a fixed start date and counted forward in 14-day intervals. Using these time blocks allows for the stability in trends over time and accounts for delays in reporting lab results.

In the interest of keeping the reports concise and useful, the cumulative counts updated on a monthly basis can now be viewed between updates at the Fulton County Board of Health website [here](#).

Please visit the Georgia Department of Public Health Daily Status Report [here](#) for cumulative daily counts.

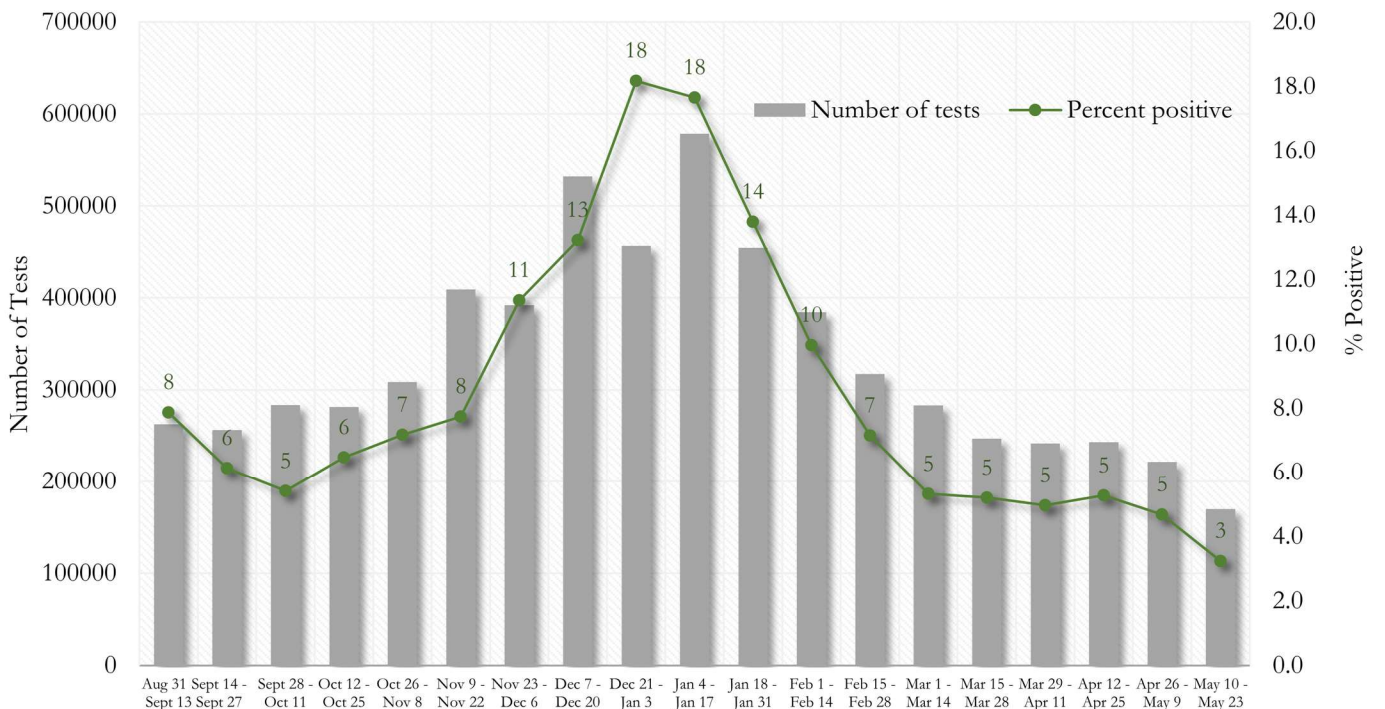
COVID-19 TESTING AND POSITIVITY IN FULTON COUNTY AND GEORGIA

Fig. 16. Trends in Positive COVID-19 Tests in Fulton County by 14-day Periods



*Data on Polymerase Chain Reaction (PCR) tests only included.

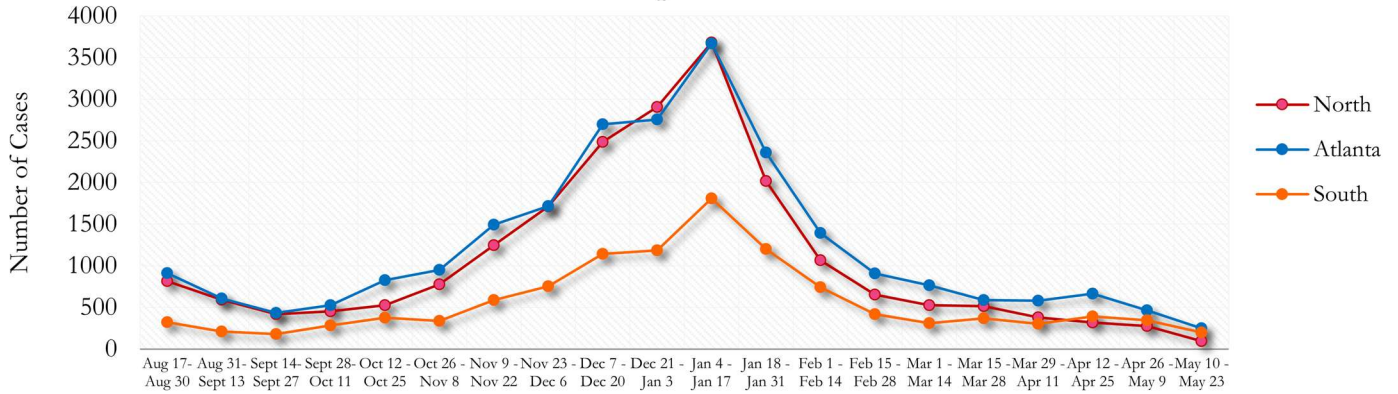
Fig. 17. Trends in Positive COVID-19 Tests in Georgia by 14-day Periods



*Data on Polymerase Chain Reaction (PCR) tests only included.

TRENDS IN COVID-19 CASES AMONG DEMOGRAPHIC GROUPS (14 DAY PERIODS)

Fig. 18. Trends in Geographic distribution of COVID-19 Cases in Fulton County by 14-day periods



In the past two weeks, Atlanta accounted for the majority of new cases.

*North - Includes all Fulton cities north of Atlanta (Alpharetta, Johns Creek, Milton, Mountain Park, Roswell, Sandy Springs)

*South - Includes all Fulton cities south of Atlanta (Chattahoochee Hills, College Park, East Point, Fairburn, Hapeville, Palmetto, South Fulton, and Union City)

Fig. 19. Trends in Racial Distribution of COVID-19 Cases in Fulton County by 14-day periods

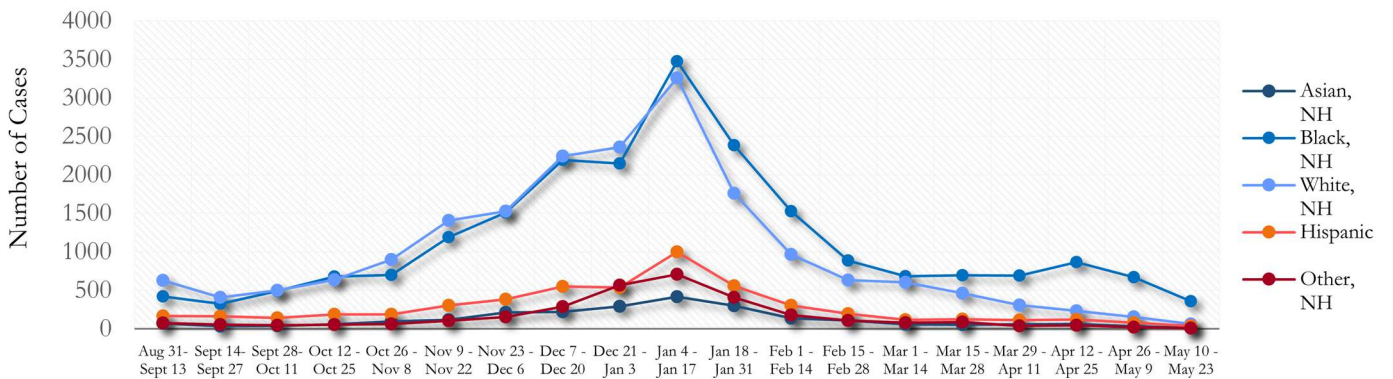
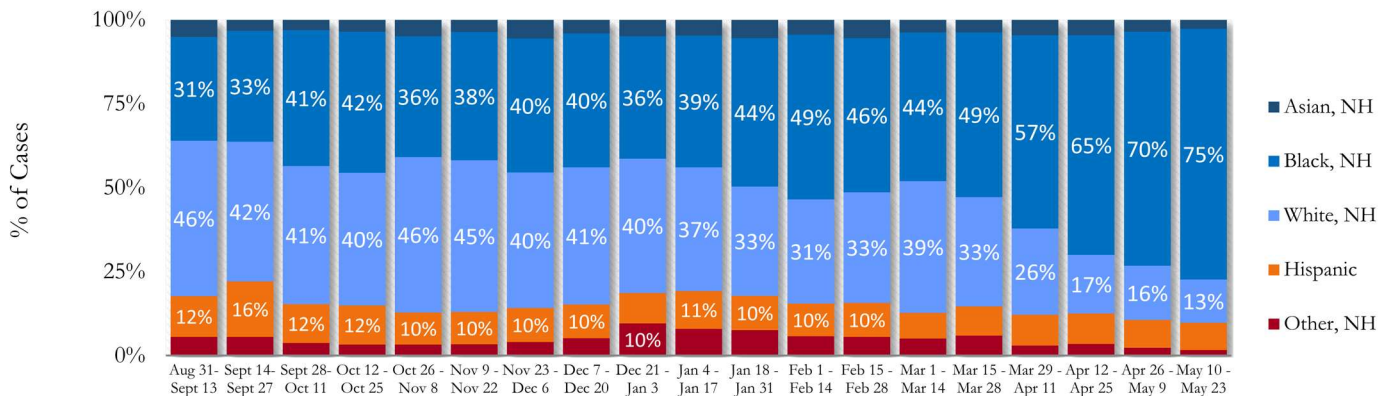


Fig. 20. Racial Distribution of COVID-19 Cases in Fulton County by 14-day periods



About 8% of all Fulton County COVID cases are missing data on patient race and ethnicity and in the past two weeks, about 15% of cases are missing this data. Percentages do not include the missing data.

Fig. 21. Trends in Gender Distribution of COVID-19 Cases in Fulton County by 14-day periods

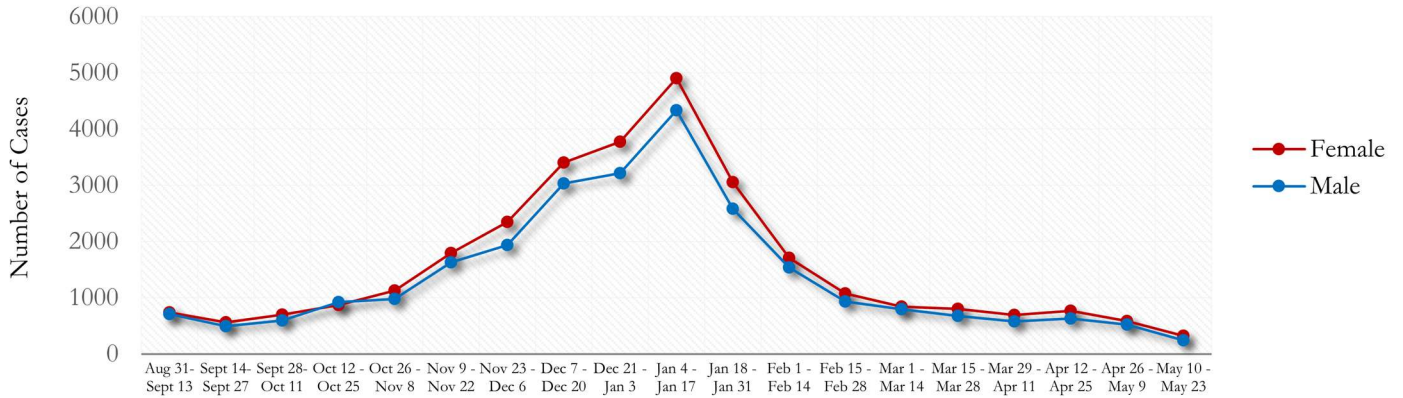
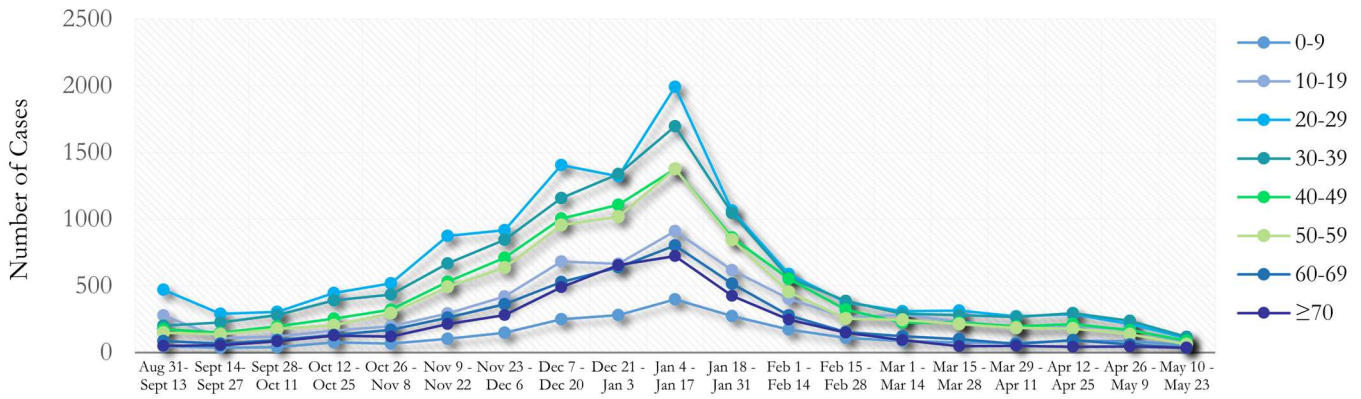
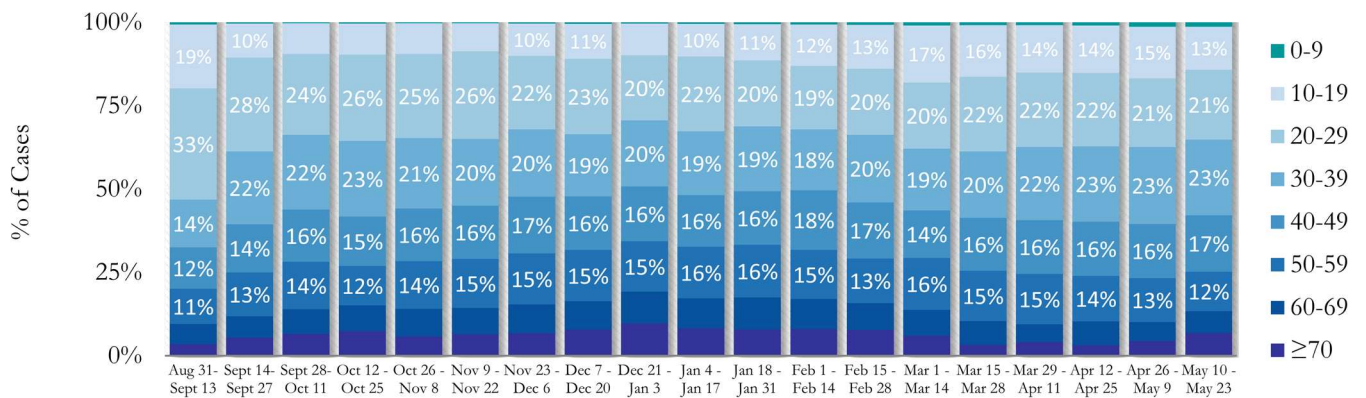


Fig. 22. Trends in Age Distribution of COVID-19 Cases in Fulton County by 14-day periods



In the most recent two weeks, 20-29 year olds and 30-39 year olds accounted for the majority of new cases.

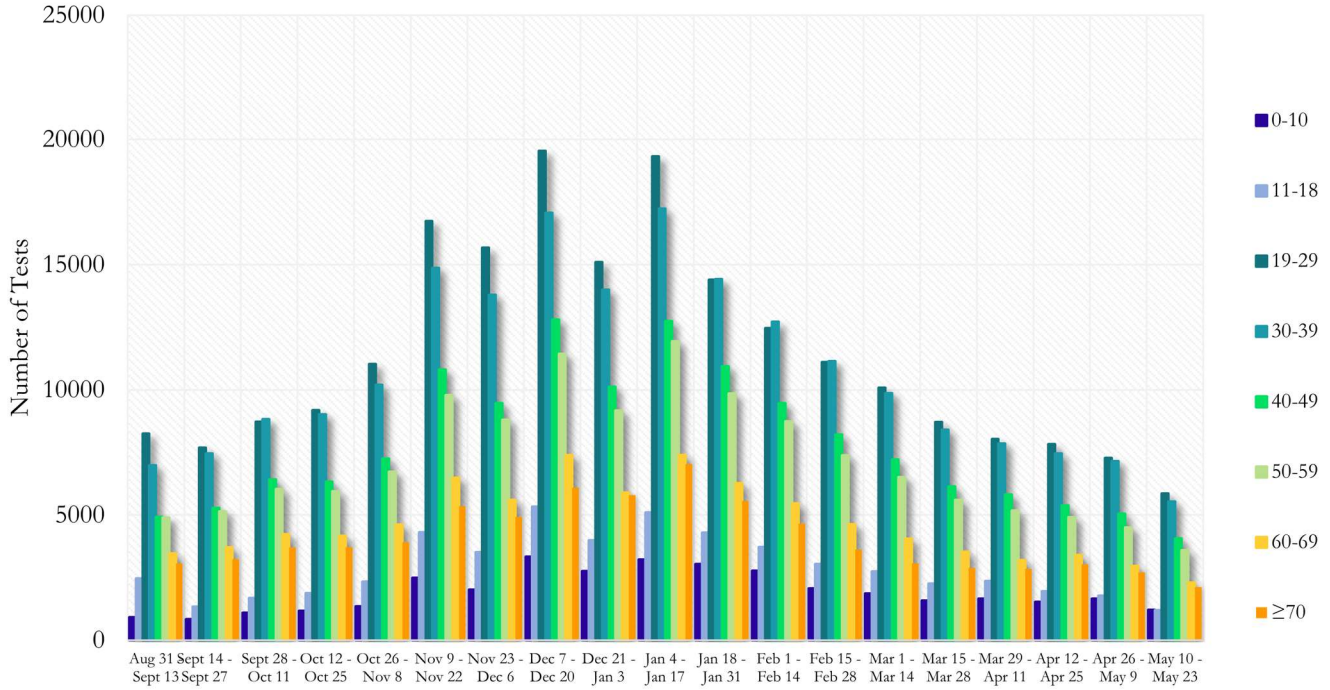
Fig. 23. Age Distribution of COVID-19 Cases in Fulton County by 14-day periods



Value labels under 10% are not shown.

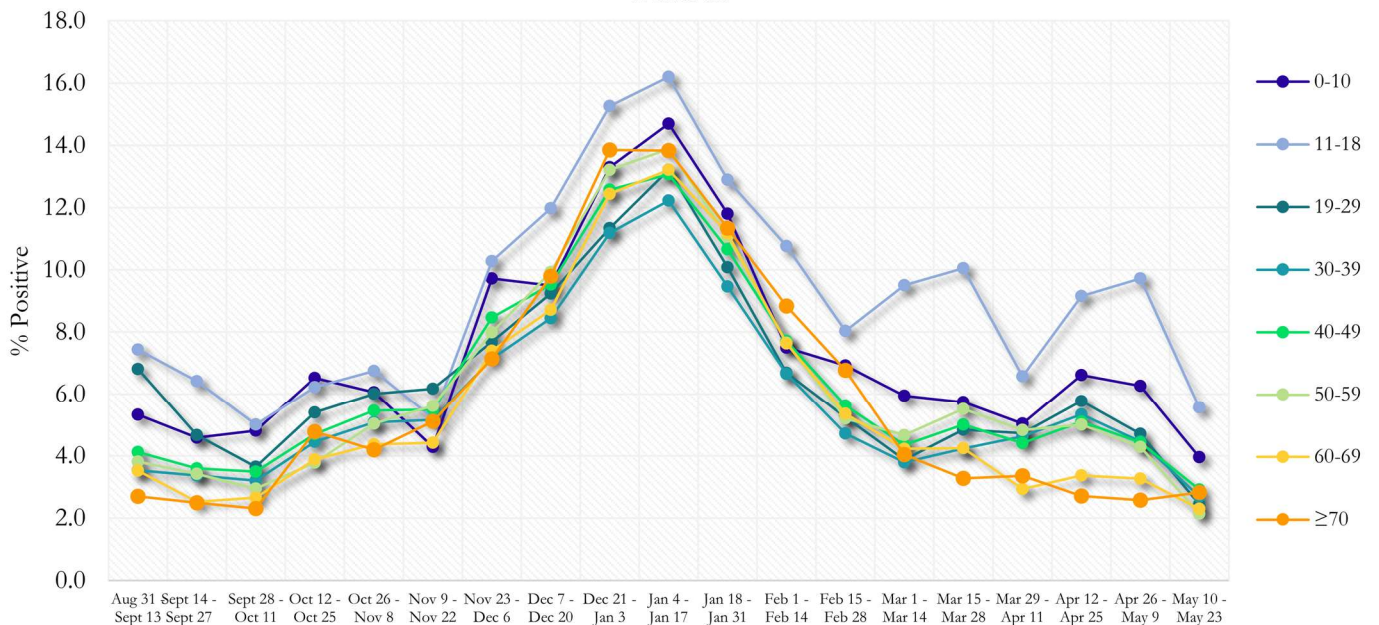
COVID-19 TESTING AND POSITIVITY IN FULTON COUNTY BY AGE AND RACE

Fig. 24. COVID-19 Tests by Age in Fulton County by 14-day Periods



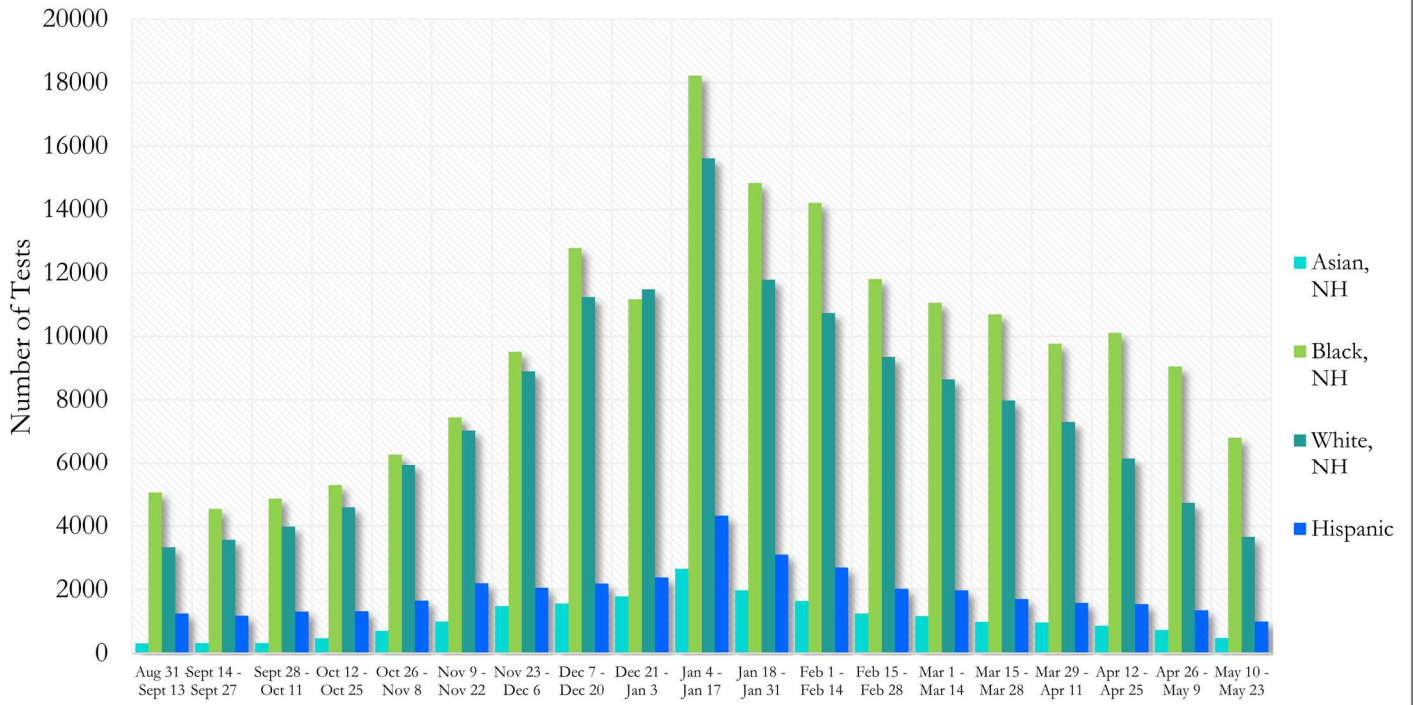
*Data on Polymerase Chain Reaction (PCR) tests only included.

Fig. 25. Percent Positive COVID-19 Tests by Age Group in Fulton County by 14-day Periods



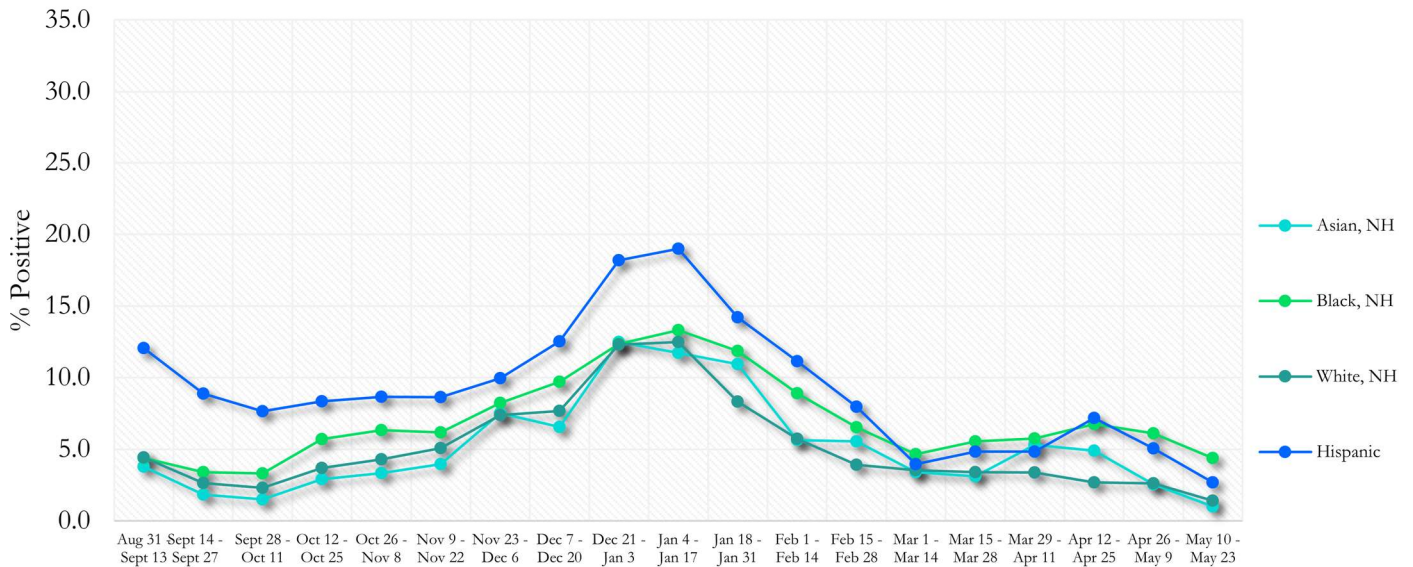
*Data on Polymerase Chain Reaction (PCR) tests only included.

Fig. 26. COVID-19 Tests by Race and Ethnicity in Fulton County by 14-day Periods



*Data on Polymerase Chain Reaction (PCR) tests only included. For the recent two weeks, 54% of test results did not have race/ethnicity information.

Fig. 27. Percent Positive COVID-19 Tests by Race and Ethnicity in Fulton County by 14-day Periods



*Data on Polymerase Chain Reaction (PCR) tests only included.

COVID-19 IN LONG-TERM CARE FACILITIES IN FULTON COUNTY

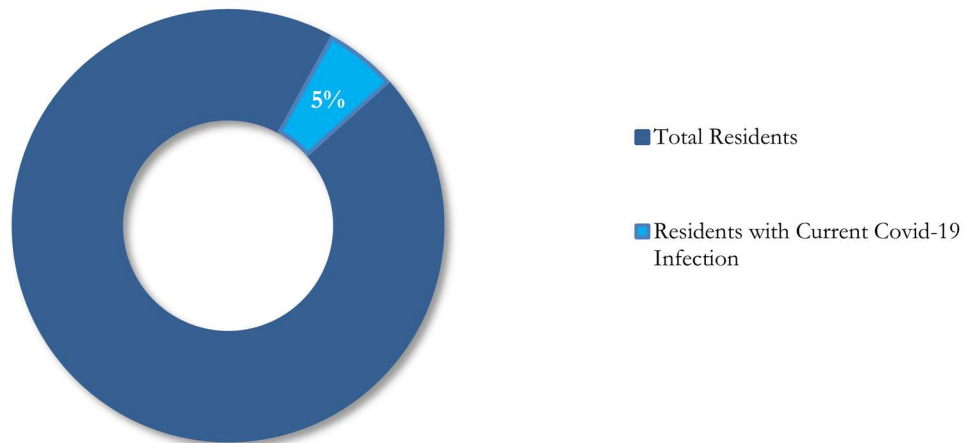
Older persons (aged 65 years and older) and persons who live in nursing homes or other long-term care facilities seem to be at higher risk for developing more serious complications from COVID-19. Extra precautions are recommended for individuals within this risk groups – Centers for Disease Control and Prevention (CDC 2020) <https://www.cdc.gov/coronavirus/2019-ncov/need-extra-precautions/people-at-higher-risk.html>

Fig. 28. Cumulative COVID-19 Diagnoses and Deaths in Fulton County Associated with Long-Term Care Facilities



CURRENT COVID-19 POSITIVITY:

Fig. 29. Percentage of LTCF Residents with Current COVID-19 Infection



*This data comes from facilities self-reporting to DPH and is thus subject to change as more facilities report or provide updated counts. Current total resident count = 4,402