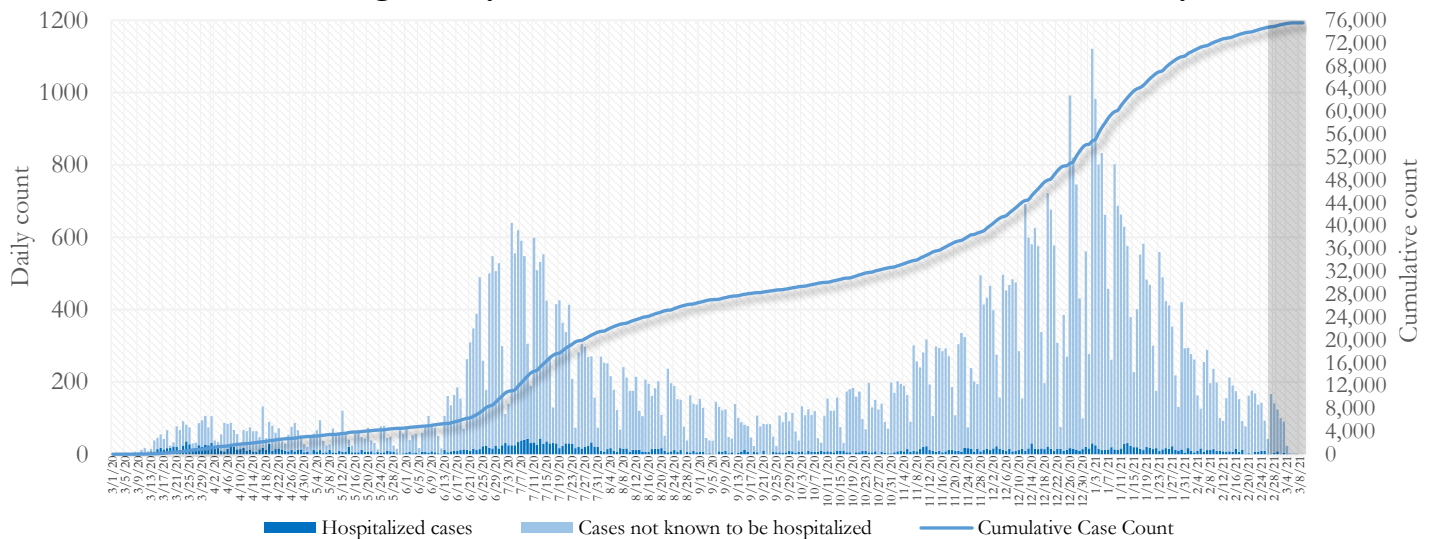


SUMMARY

- As of March 9, 2021, Fulton County has recorded **75,533 cases of the 2019 novel coronavirus (COVID-19)** and **1,092 confirmed COVID-19 deaths**. 121 deaths are currently being reviewed by GA DPH to confirm cause of death.
- Of **2,119 new diagnoses** made between February 17 and March 2, the central portion of the county (Atlanta) accounted for 45% while the northern and southern parts accounted for 32% and 21% respectively.
- By city, new COVID-19 case rates range from 121.6 per 100,000 persons (Hapeville) to 320.0 per 100,000 persons (Palmetto). [**Fulton County Diagnoses Rates (per 100,000 persons): Cumulative – 6871.8; Incidence –192.8**]. See map showing incident case rate by ZIP code on Pg.12.
- Among all persons diagnosed with COVID-19 in Fulton County since August 1, **4.0% required hospitalization and 1.2% died**.
- Of all testing done in Fulton County between February 15 and February 28, the **percent positivity rate was 6.0%**.

Fig 1. Daily and Cumulative COVID-19 cases in Fulton County, GA



*Counts shown reflect the number of **confirmed** cases as of 9:00 pm on 3/8/21 using the date of first positive sample collection. Where date of sample collection was not available or missing, the date of report creation in GA SENDSS was used instead. **Note:** Delays in data reporting may cause changes in data counts, particularly in the shaded portion. Data throughout this report are preliminary and subject to ongoing data cleaning processes, and thus are subject to change. For reporting on probable (antigen) cases, visit the DPH Daily Status Report [here](#).

DISTRIBUTION OF COVID-19 CASES BY REGION

New cases: 45% of the new COVID-19 cases in the past 2 weeks occurred in Atlanta while 32% and 21% occurred in the Northern and Southern regions of the county respectively.

Fulton Region	% Cumulative count	% New cases*
Atlanta	42.5%	44.7%
North ¹	34.2%	31.9%
South ²	19.6%	21.1%
Unincorporated/Unknown	3.7%	2.3%

¹Includes all Fulton County cities north of Atlanta (Alpharetta, Johns Creek, Milton, Mountain Park, Roswell, Sandy Springs.) | ²Includes all cities south of Atlanta (Chattahoochee Hills, College Park, East Point, Fairburn, Hapeville, Palmetto, South Fulton, and Union City) ***New cases:** Cases diagnosed in the past 2 weeks only (between 2/17/21 – 3/2/21).

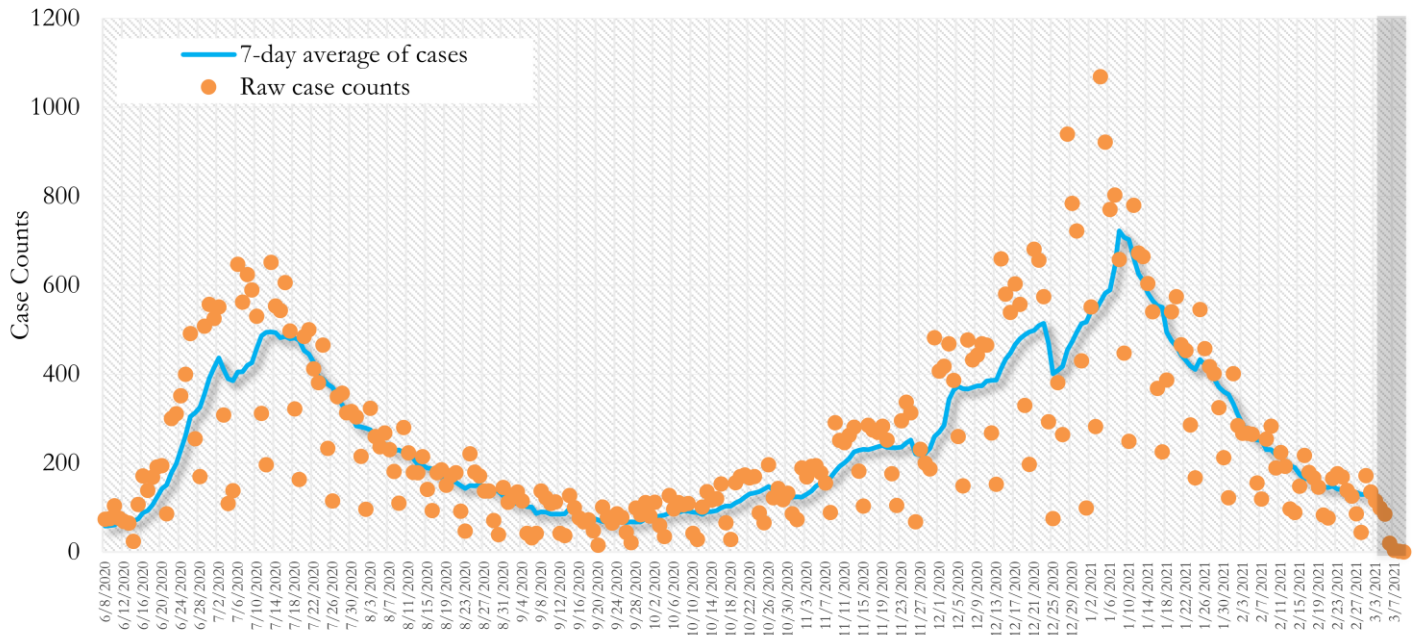
In the recent two week reporting period (2/17-3/2), there were fewer new cases of COVID-19 in Fulton County than the previous two weeks (2/3-2/16).



*Delayed a week to account for testing results turnaround time.

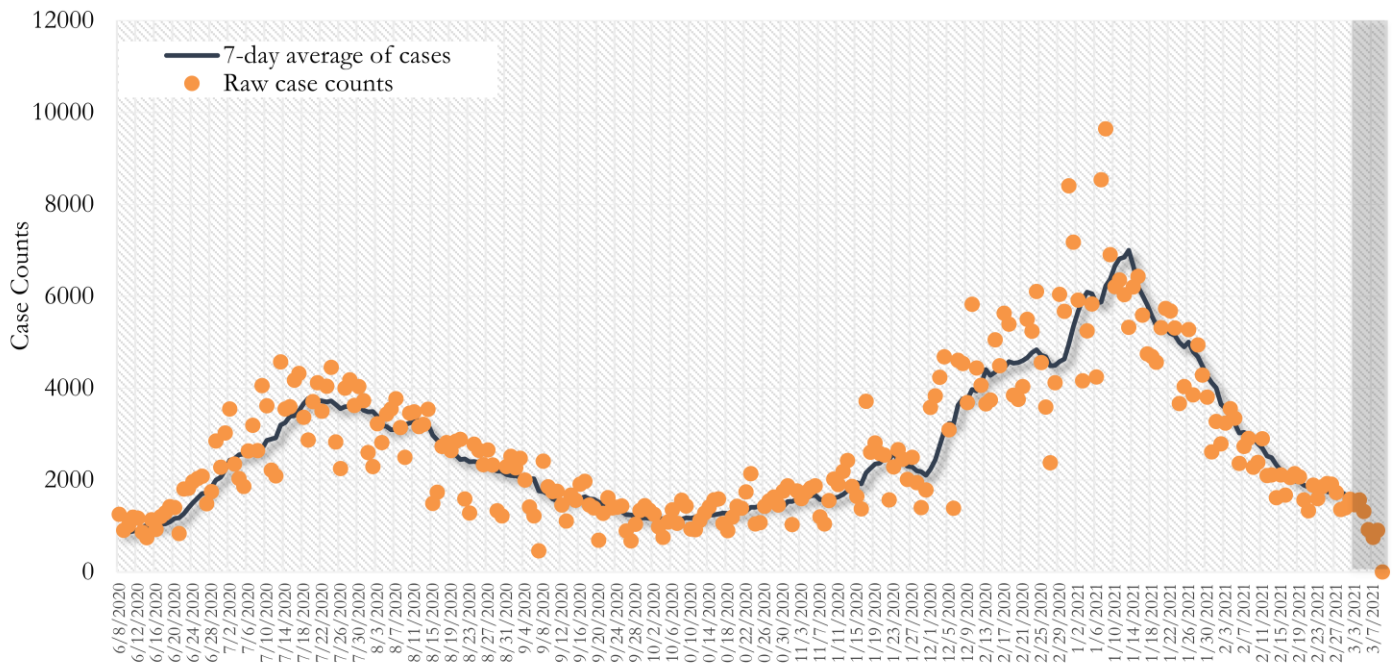
TRENDS IN COVID-19 CASES, HOSPITALIZATIONS AND DEATHS (7-DAY MOVING AVE.)

Fig. 2. New COVID-19 Cases in Fulton County Daily (Averaged over 7 days)



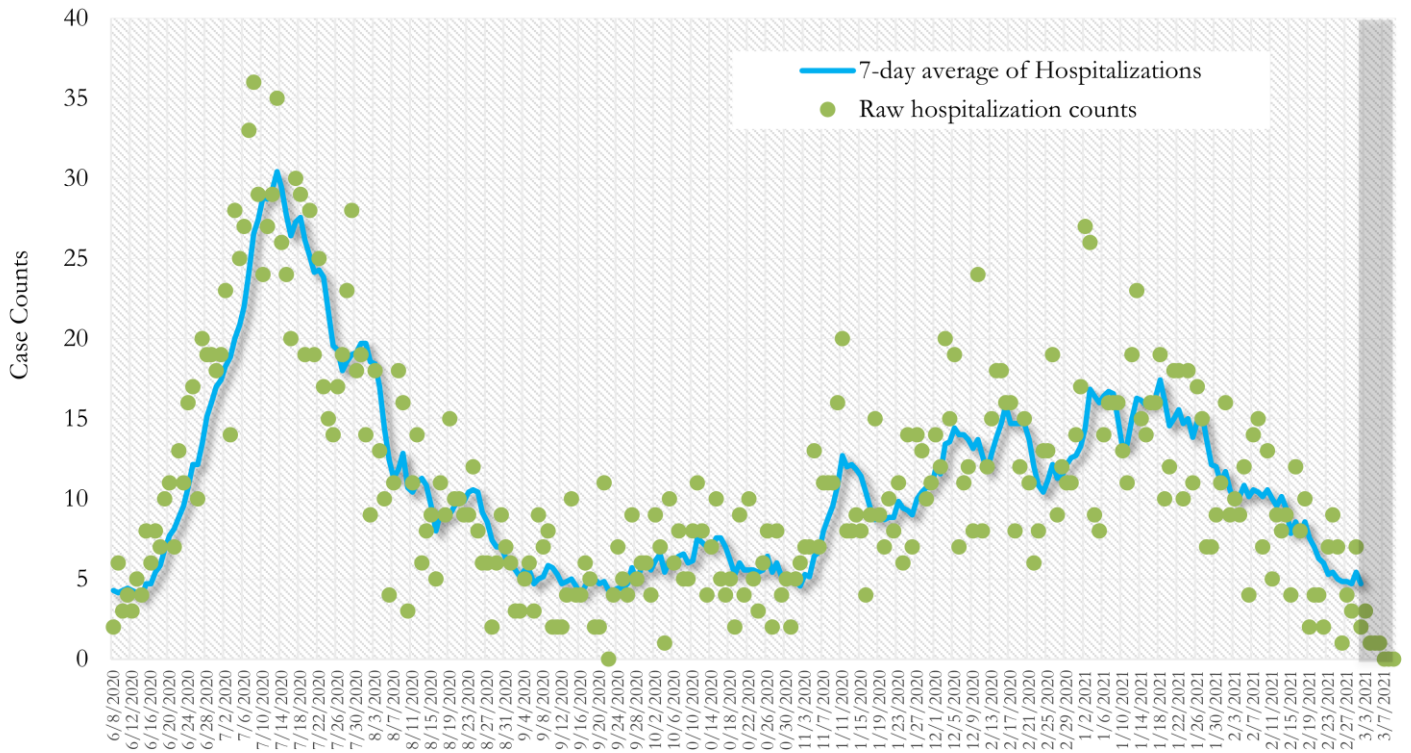
*Date of collection of first positive sample used (report creation date used where sample collection date is missing). Graph above reflects the trend in COVID-19 diagnosis. Due to the high volume of testing in recent weeks, there have been delays in reporting lab results. Thus, the trend is subject to change as more lab results get added to the state surveillance database.

Fig. 3. New COVID-19 Cases in Georgia State Daily (Averaged over 7 days)



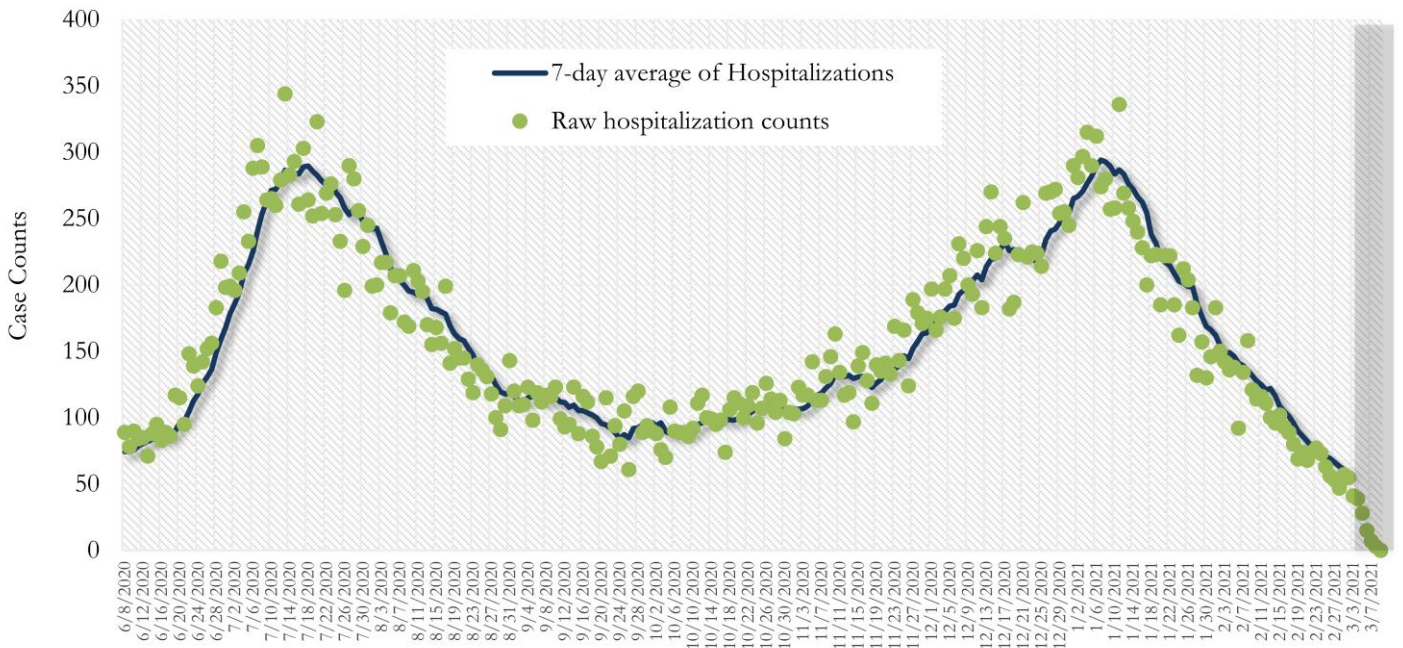
*Date of collection of first positive sample used (report creation date used where sample collection date is missing). Graph above reflects the trend in COVID-19 diagnosis. Due to the high volume of testing in recent weeks, there have been delays in reporting lab results. Thus, the trend is subject to change as more lab results get added to the state surveillance database.

Fig. 4. COVID-19 Hospitalizations in Fulton County Daily (Averaged over 7 days)



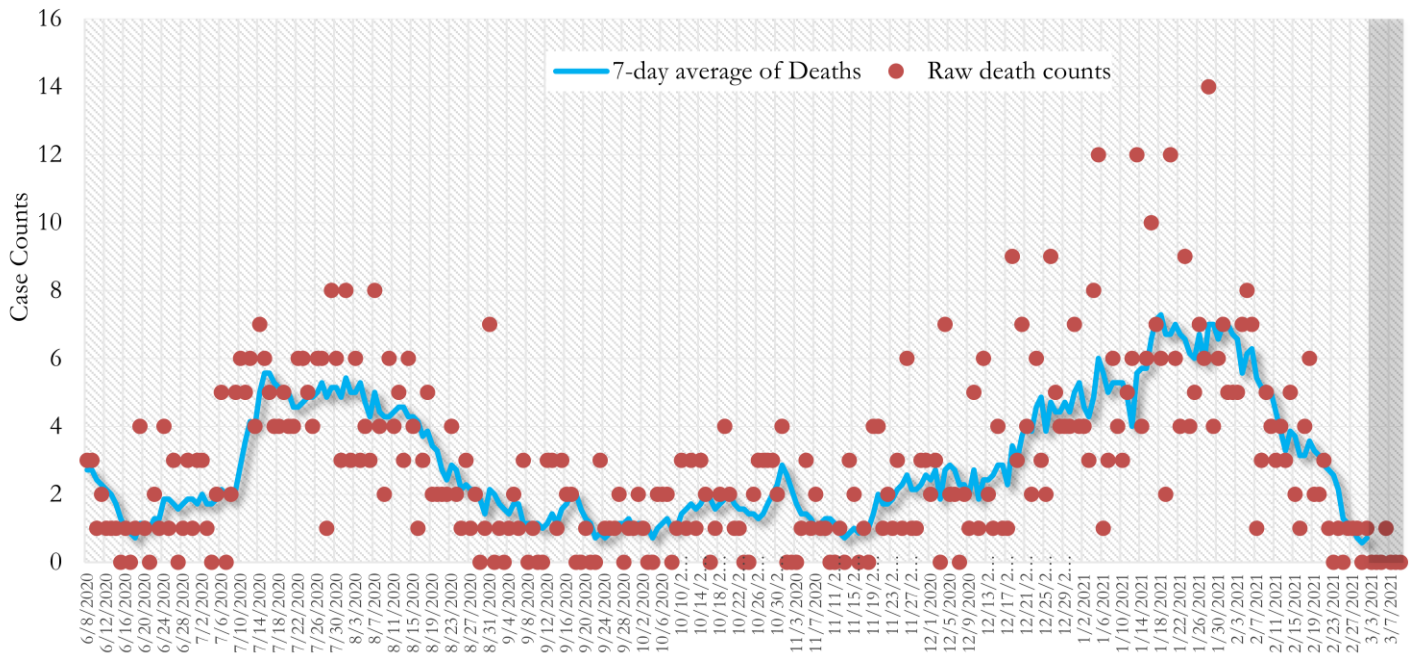
*Reported date of hospital admission used. Graph above reflects the trend in COVID-19 hospitalizations. Due to the high volume of new cases being added daily, there have been delays in reporting hospitalization data. Thus, the trend is likely to change as more hospitalization data is reported in the state surveillance database.

Fig. 5. COVID-19 Hospitalizations in Georgia State Daily (Averaged over 7 days)



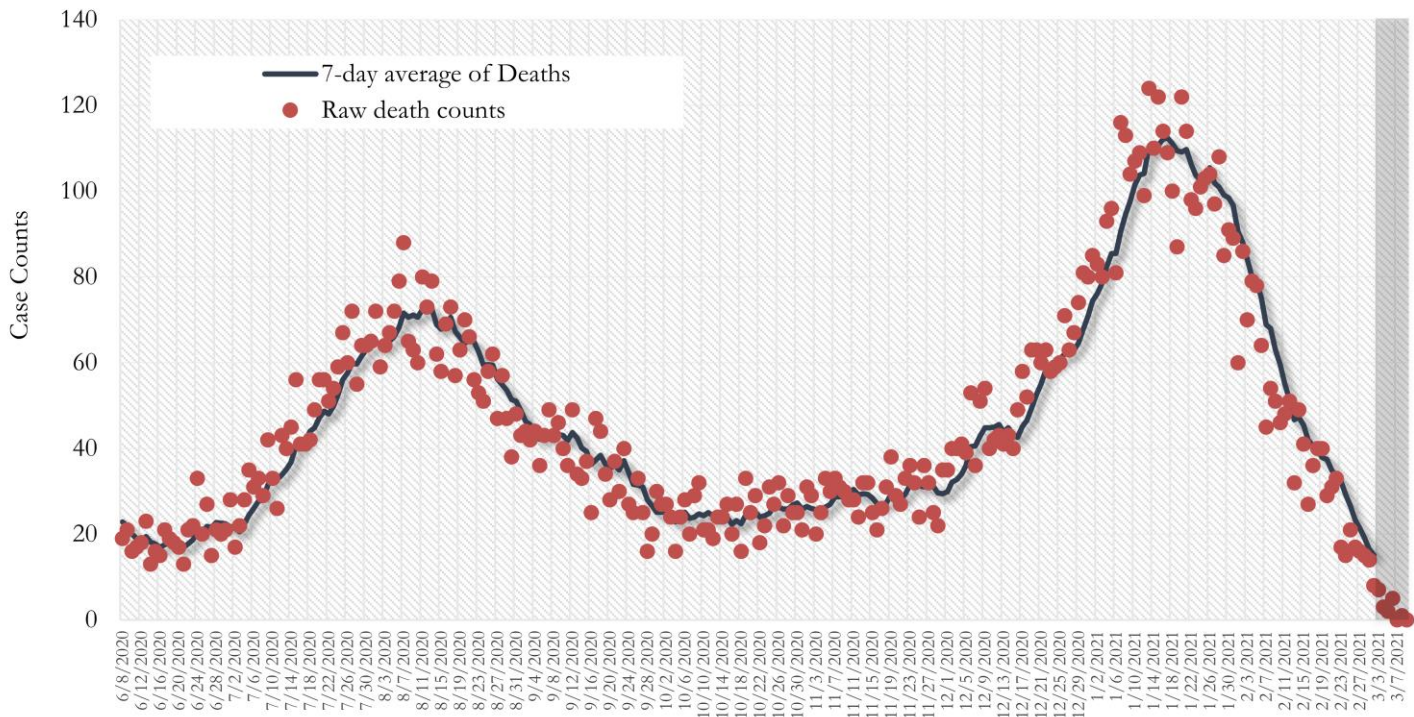
*Reported date of hospital admission used. Graph above reflects the trend in COVID-19 hospitalizations. Due to the high volume of new cases being added daily, there have been delays in reporting hospitalization data. Thus, the trend is likely to change as more hospitalization data is reported in the state surveillance database.

Fig. 6. COVID-19 Deaths in Fulton County Daily (Averaged over 7 days)



*Reported date of death used. Graph above reflects the trend in deaths attributed to COVID-19. The trend is likely to change as more data on deaths among persons with COVID-19 is reported in the state surveillance database.

Fig. 7. COVID-19 Deaths in Georgia State Daily (Averaged over 7 days)



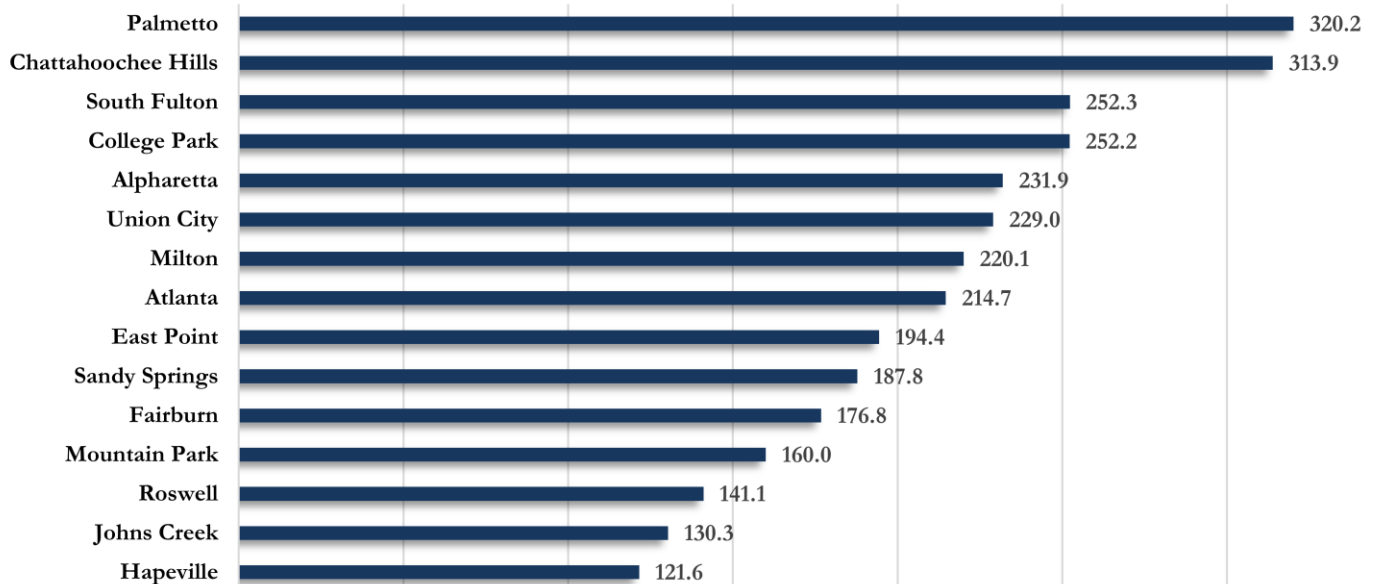
*Reported date of death used. Graph above reflects the trend in deaths attributed to COVID-19. The trend is likely to change as more data on deaths among persons with COVID-19 is reported in the state surveillance database.

COVID-19 CASE COUNTS AND RATES BY CITY

	Recent 14-day reporting period ¹	Preceding 14-day reporting period	% Change from preceding 14 days (%) ²	Incidence Rate ³
	2/17-3/2	2/3-2/16		
Alpharetta	150	162	↓ 7.4%	231.9
Atlanta	947	1280	↓ 26.0%	214.7
Chattahoochee Hills	<10	<10	↑ 125.0%	313.9 ⁴
College Park	35	41	↓ 14.6%	252.2
East Point	68	101	↓ 32.7%	194.4
Fairburn	26	60	↓ 56.7%	176.8
Hapeville	<10	18	↓ 55.6%	121.6
Johns Creek	109	198	↓ 44.9%	130.3
Milton	84	98	↓ 14.3%	220.1
Mountain Park	<10	<10	↓ 66.7%	160.0
Palmetto	14	14	-	320.2 ⁴
Roswell	133	220	↓ 39.5%	141.1
Sandy Springs	198	265	↓ 25.3%	187.8
South Fulton	240	313	↓ 23.3%	252.3
Union City	48	97	↓ 50.5%	229.0
Unknown	49	50	-	-

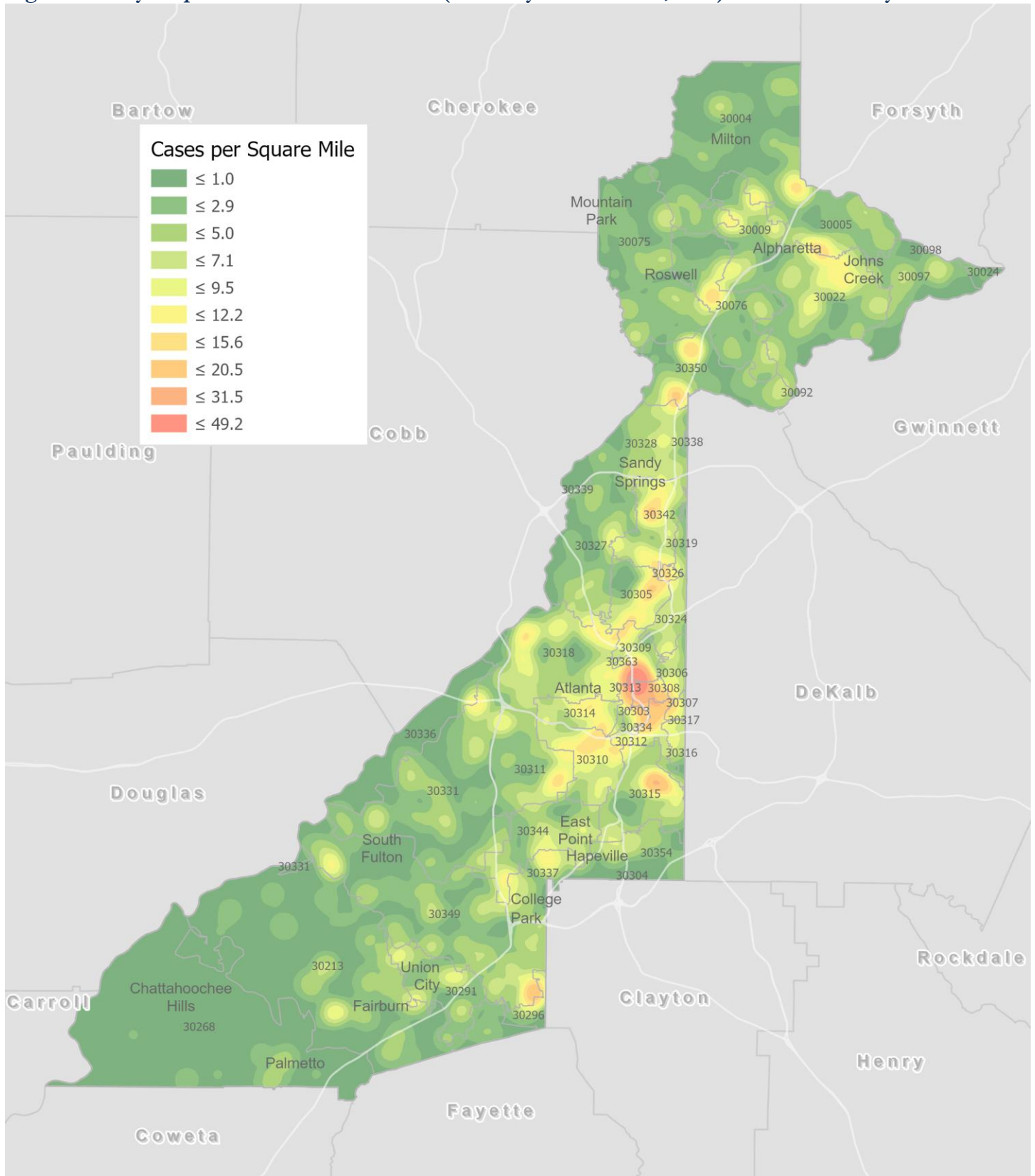
¹**New cases:** Cases diagnosed in most recent 14 days (based on reported dates of positive sample collection). To allow for lag in reporting results of new diagnoses from samples collected in the most recent week, data used for incident diagnoses analyses were moved back by one week. ²**% change:** These reflect the percentage increase or decrease in new diagnoses between the 14 days preceding the most recent 7 days and the 14 days preceding that. ³**(Incidence) Rate:** Rate of new diagnoses in the last 14 day period preceding the immediate past week. ****Data cleaning** (either during case interviews or address geo-coding) may lead to reassignment of few cases from one territory to another based on their corrected addresses. These may appear as "decreases" when compared to the previous counts. These do not reflect errors in the data collection or analysis process but only reflect the minor day-to-day fluctuations in case counts that arise in an evolving public health database like COVID's. ⁴**Incidence rate is skewed high due to small population. Note: All data reported are preliminary and subject to change.**

Fig. 8. Incidence Rates by Fulton City for Recent 14-day Reporting Period



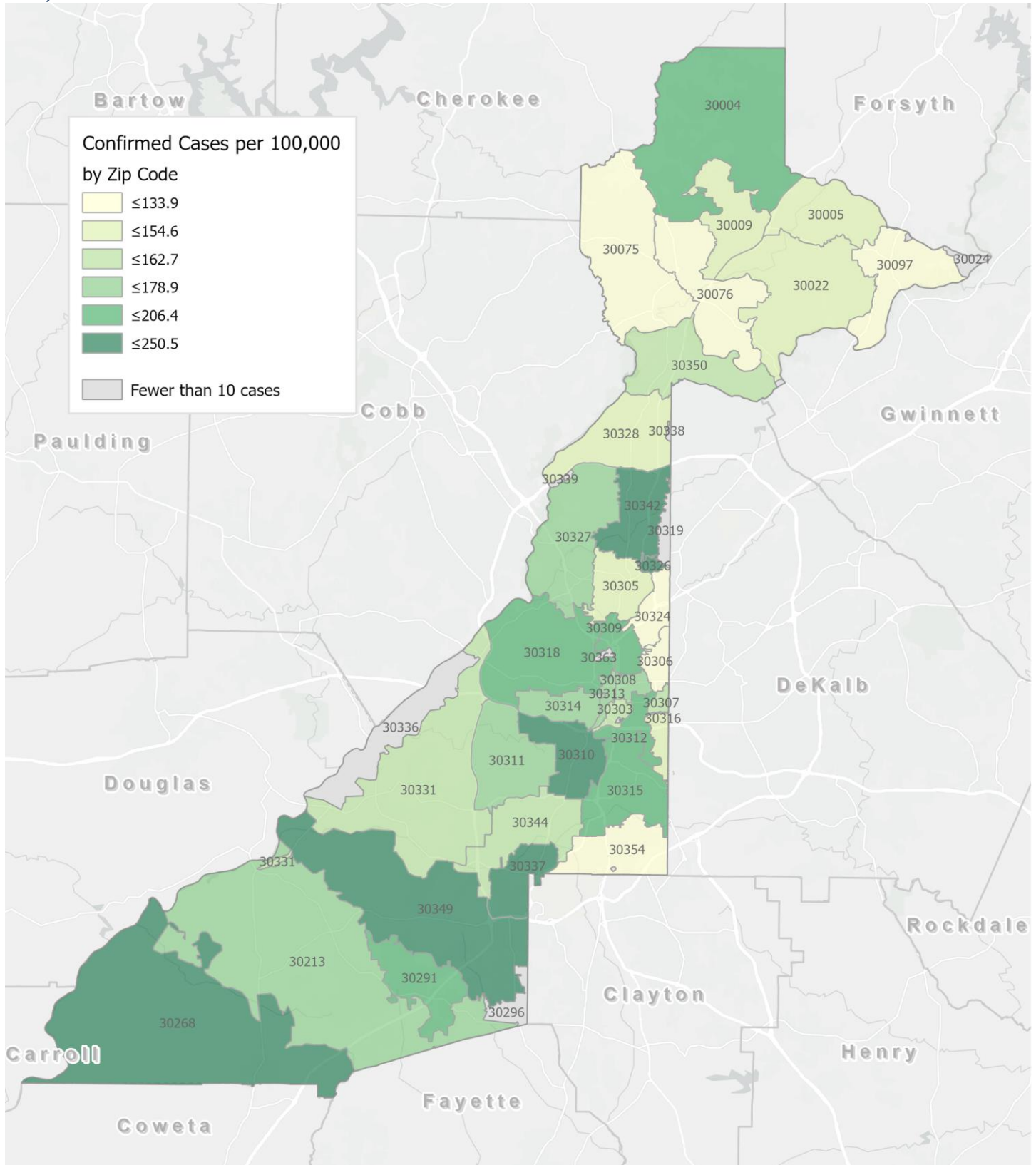
*Rates shown are per 100,000 persons | All data shown are preliminary and are subject to change as testing results get updated.

Fig. 9. Density Map – New COVID-19 Cases (February 17 – March 2, 2021) in Fulton County



New COVID-19 cases: Cases diagnosed in most recent 14 days (based on reported dates of positive sample collection). To allow for lag in reporting results of positive cases from samples collected in the immediate past 7 days, data used for incident diagnoses analyses are moved back by one week. Map reflects new COVID-19 cases diagnosed between Feb 17th and Mar 2nd, 2021 across Fulton County, excluding LTCF cases.

Fig. 10. New COVID-19 Diagnoses Rates (per 100,000 population) by Zip Code (February 17 – March 2, 2021)



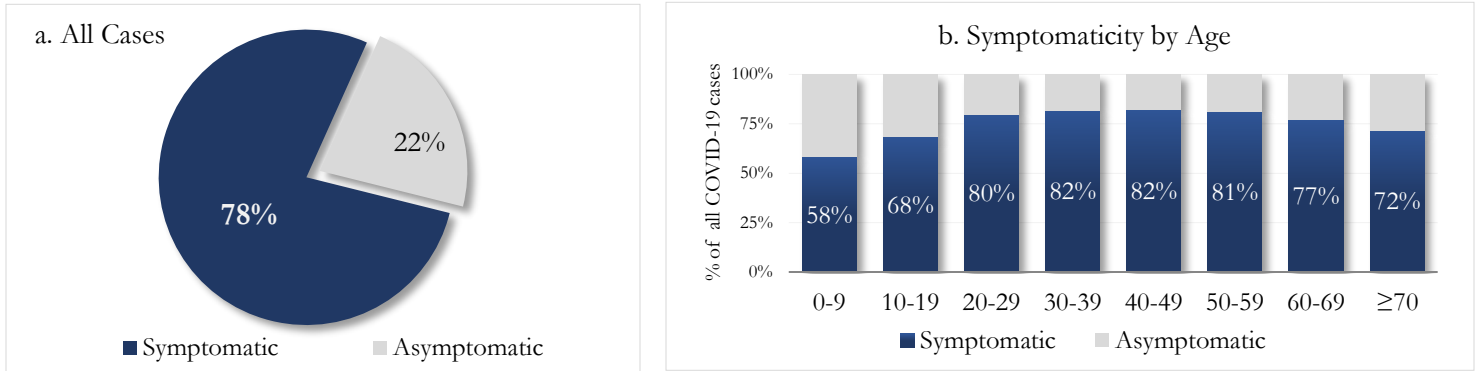
*Rates shown are per 100,000 populations.

New COVID-19 cases: Cases diagnosed in most recent 14 days (based on reported dates of positive sample collection). To allow for lag in reporting results of positive cases from samples collected in the immediate past 7 days, data used for incident diagnoses analyses are moved back by one week. Data used excludes outbreak-related cases at long-term care facilities and map shown reflects only the new non-LTCF cases diagnosed between the dates shown in map title. See page 12 for zip code break down table.

REPORTING SYMPTOMS AMONG PERSONS WITH COVID-19 IN FULTON

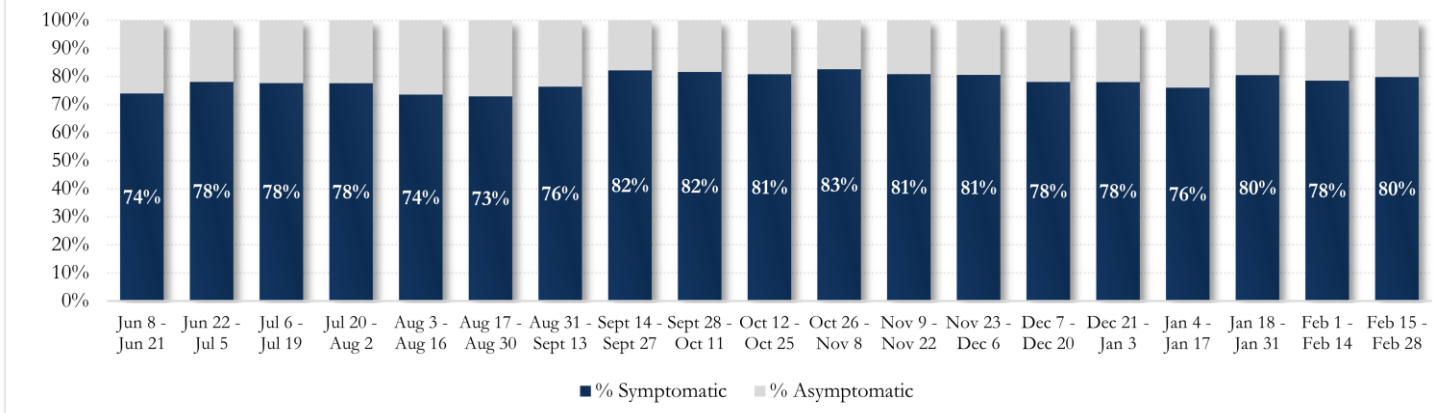
People with COVID-19 have reported a wide range of symptoms ranging from mild symptoms to severe illness. Symptoms may appear 2-14 days after exposure to the virus. Symptoms reported include: cough, shortness of breath/difficulty breathing, fever, chills, muscle pain, headache, sore throat, congestion, nausea or vomiting, diarrhea, fatigue, or new loss of taste or smell – Centers for Disease Control and Prevention (CDC) – Centers for Disease Control and Prevention (CDC) <https://www.cdc.gov/coronavirus/2019-ncov/symptoms-testing/symptoms.html>

Fig. 11a & b. Total Proportion Reporting Symptoms in Fulton



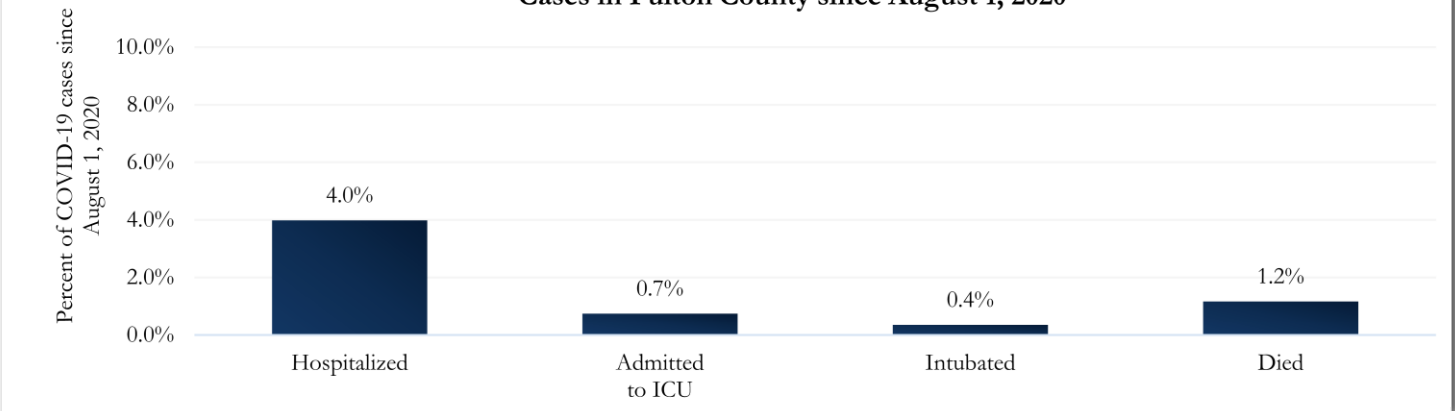
COVID-19 cases who have been case interviewed or had medical charts reviewed as of 3/9/21 only. n = 43,810

Fig 12. Total Proportion Reporting Symptoms in Fulton County Over Time



COVID-19 HOSPITALIZATIONS, ICU ADMISSIONS AND DEATHS IN FULTON

Fig. 13. Hospitalizations, ICU Admissions, Intubations, and Deaths among COVID-19 Cases in Fulton County since August 1, 2020



DEMOGRAPHIC DISTRIBUTIONS – COVID-19 CASES AND DEATHS

A. Distribution of COVID-19 cases by gender, age, and race in Fulton County by Fulton Region in the past 28 days (2/3- 3/2)

	North Fulton Cities ¹ Count (%)	Atlanta Count (%)	South Fulton Cities ² Count (%)	Unknown City Count (%)	All Fulton Count (%)
Total COVID-19 cases	1525	2112	1022	90	4749
Gender: Female	794 (52%)	1091 (52%)	554 (54%)	47 (52%)	2486 (52%)
Male	729 (48%)	999 (47%)	465 (45%)	43 (48%)	2236 (47%)
Unknown*	<10	22 (1%)	<10	<10	27 (1%)
Age: 0-9	87 (6%)	98 (5%)	60 (6%)	<10	251 (5%)
10-19	260 (17%)	192 (9%)	130 (13%)	<10	591 (12%)
20-29	241 (16%)	464 (22%)	143 (14%)	19 (21%)	867 (18%)
30-39	249 (16%)	443 (21%)	161 (16%)	21 (23%)	874 (18%)
40-49	282 (18%)	301 (14%)	173 (17%)	11 (12%)	767 (16%)
50-59	201 (13%)	255 (12%)	180 (18%)	11 (12%)	647 (14%)
60-69	110 (7%)	175 (8%)	107 (10%)	<10	401 (8%)
≥70	95 (6%)	181 (9%)	66 (6%)	<10	346 (7%)
Unknown*	<10	<10	<10	<10	5 (<1%)
Race: Asian, NH	139 (9%)	55 (3%)	10 (1%)	<10	209 (4%)
Black, NH	208 (14%)	969 (46%)	756 (74%)	35 (39%)	1968 (41%)
White, NH	634 (42%)	520 (25%)	55 (5%)	24 (27%)	1233 (26%)
Hispanic	213 (14%)	122 (6%)	78 (8%)	<10	417 (9%)
Other, NH	122 (8%)	104 (5%)	26 (3%)	<10	258 (5%)
Unknown*	209 (14%)	342 (16%)	97 (9%)	16 (18%)	664 (14%)

*Unknown includes cases not yet interviewed. 28 days delayed by seven to account for lag in reporting lab results. ¹Includes all Fulton County cities north of Atlanta (Alpharetta, Johns Creek, Milton, Mountain Park, Roswell, Sandy Springs). ²Includes all cities south of Atlanta (Chattahoochee Hills, College Park, East Point, Fairburn, Hapeville, Palmetto, South Fulton, and Union City)

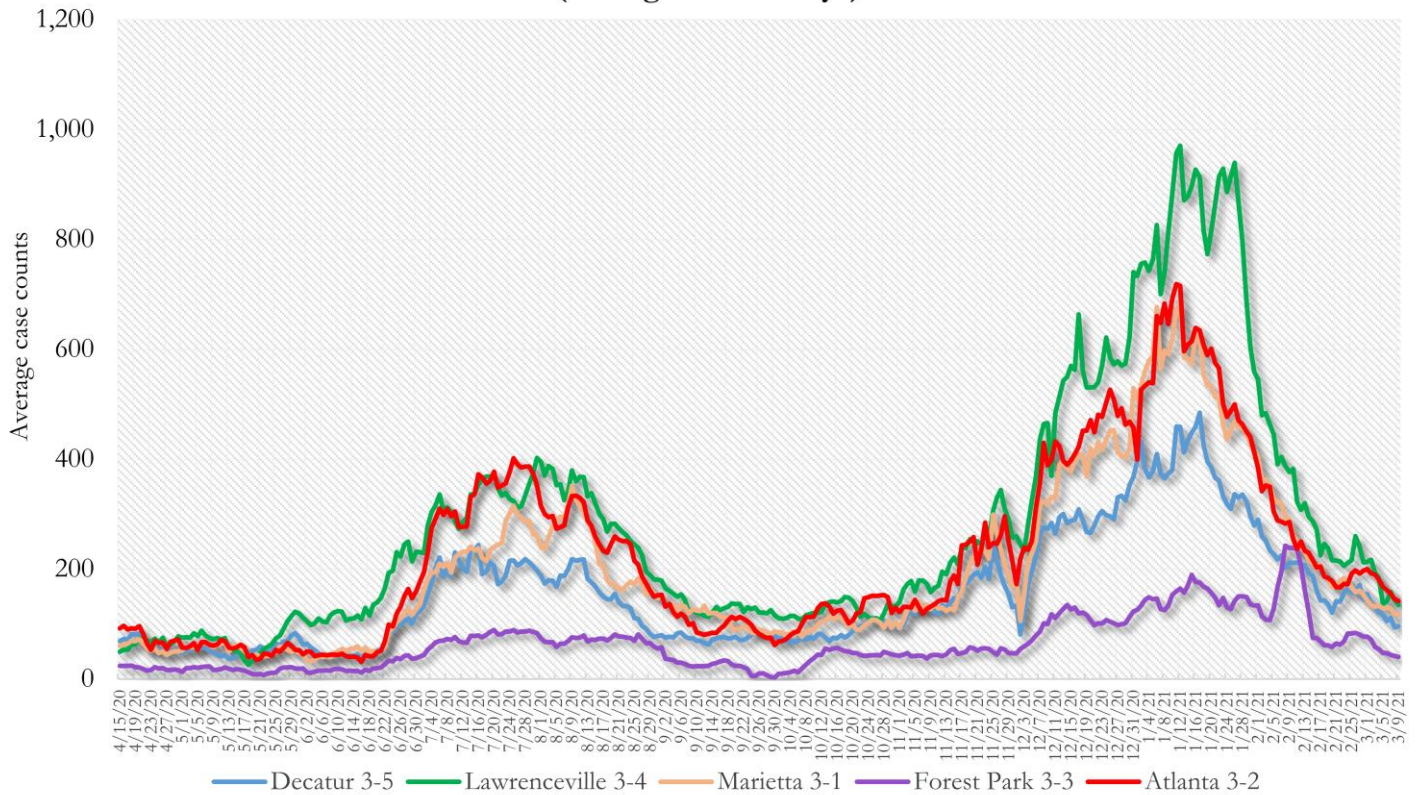
B. Distribution of COVID-19 deaths by gender, age, and race in Fulton County in the past 28 days (2/3 - 3/2)

	Count of New Deaths	% of New Deaths
Total COVID-19 deaths	18	
Gender: Female	10	56%
Male	<10	44%
Unknown	<10	<1%
Age: ≤ 29	<10	<1%
30-39	<10	<1%
40-49	<10	11%
50-59	<10	6%
60-69	<10	22%
≥70	11	61%
Unknown	<10	<1%
Race: Asian, NH	<10	6%
Black, NH	13	72%
White, NH	<10	22%
Hispanic	<10	<1%
Other, NH	<10	<1%
Unknown	<10	<1%

Note: All data reported are preliminary and subject to change. This table includes data on confirmed COVID-19 deaths and is subject to change as GA DPH completes cause of death confirmation processes. Data are 28 days delayed by seven to account for lag in reporting of deaths.

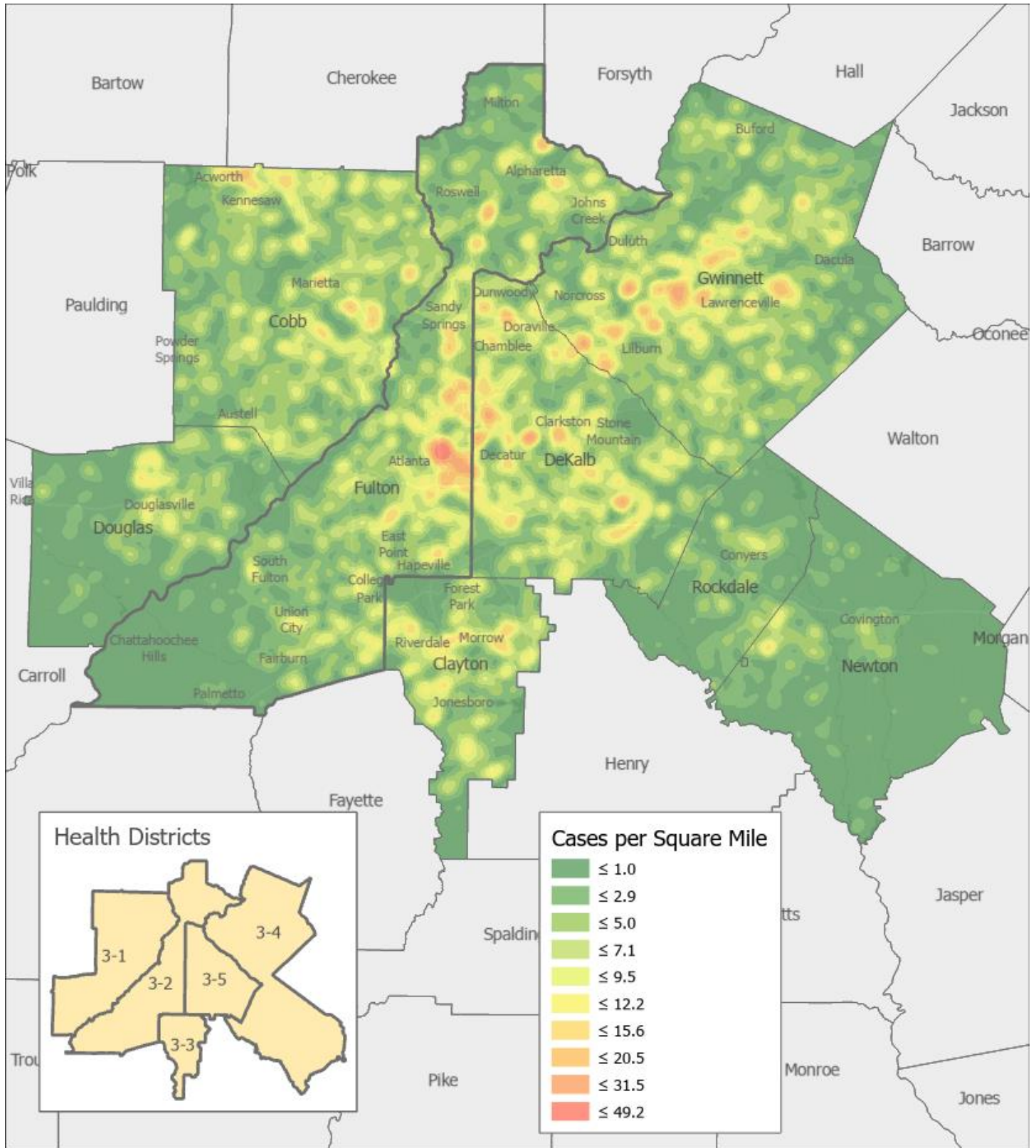
COVID-19 CASE TRENDS IN FULTON AND SURROUNDING DISTRICTS

**Fig. 14. Daily Case Counts for Atlanta Metro Districts
(Averaged over 7 days)**



*Graph shows the average number of cases calculated from the daily cumulative case counts in the metro Atlanta districts. Increases in daily cumulative case counts may include cases diagnosed earlier during the pandemic but were only recently reported to the state as cases diagnosed belonging to these districts.

Fig. 15. COVID-19 Cases in Fulton County and Surrounding Districts (February 17 – March 2, 2021)



COVID-19 NEW CASE¹ COUNTS BY ZIP CODE

Zip Code	Recent 14-day reporting period (2/17– 3/2)	Previous 14-day reporting period (2/3– 2/16)	% Change between reporting periods ²
All Fulton	2119	2928	↓ 27.6%
30004	114	113	↑ 0.9%
30005	63	74	↓ 14.9%
30009	47	54	↓ 13.0%
30022	117	151	↓ 22.5%
30023	0	<10	↓ 100.0%
30024	<10	<10	-
30075	66	121	↓ 45.5%
30076	55	98	↓ 43.9%
30080	0	0	-
30097	24	78	↓ 69.2%
30098	0	0	-
30135	0	0	-
30138	0	0	-
30139	0	0	-
30213	81	156	↓ 48.1%
30268	18	21	↓ 14.3%
30291	49	89	↓ 44.9%
30296	<10	<10	-
30301	<10	0	-
30303	11	21	↓ 47.6%
30305	51	74	↓ 31.1%
30306	21	41	↓ 48.8%
30307	11	10	↑ 10.0%
30308	43	45	↓ 4.4%
30309	78	74	↑ 5.4%
30310	71	94	↓ 24.5%
30311	72	113	↓ 36.3%
30312	52	74	↓ 29.7%
30313	25	27	↓ 7.4%
30314	46	45	↑ 2.2%
30315	88	110	↓ 20.0%
30316	20	28	↓ 28.6%
30318	137	190	↓ 27.9%
30319	<10	<10	-
30321	0	<10	↓ 100.0%
30324	37	69	↓ 46.4%
30326	14	21	↓ 33.3%
30327	46	70	↓ 34.3%
30328	62	105	↓ 41.0%
30331	107	176	↓ 39.2%
30334	<10	0	-
30336	<10	<10	-
30337	30	31	↓ 3.2%

Zip Code	Recent 14-day reporting period (2/17– 3/2)	Previous 14-day reporting period (2/3– 2/16)	% Change between reporting periods
30338	<10	0	-
30339	<10	<10	-
30340	0	0	-
30341	0	0	-
30342	86	93	↓ 7.5%
30344	60	97	↓ 38.1%
30345	0	0	-
30349	154	180	↓ 14.4%
30350	73	76	↓ 3.9%
30354	28	57	↓ 50.9%
30358	0	0	-
30363	<10	<10	-
30374	0	0	-
30606	0	0	-
31131	0	0	-
31150	0	0	-
Unknown	28	11	-

¹**New cases:** Cases diagnosed in most recent 28 days (based on reported dates of positive sample collection). To allow for lag in reporting results of new diagnoses from samples collected in the most recent week, data used for incident diagnoses analyses were moved back by one week. ²**Percent change:** These reflect the percentage increase or decrease of new diagnoses between the 14 days preceding the past 7 days and the 14 days preceding that. Changes in ZIP codes with less than 10 cases in both 2 week intervals are not reported

The following data are updated every two weeks.

Last updated 3/2/2021

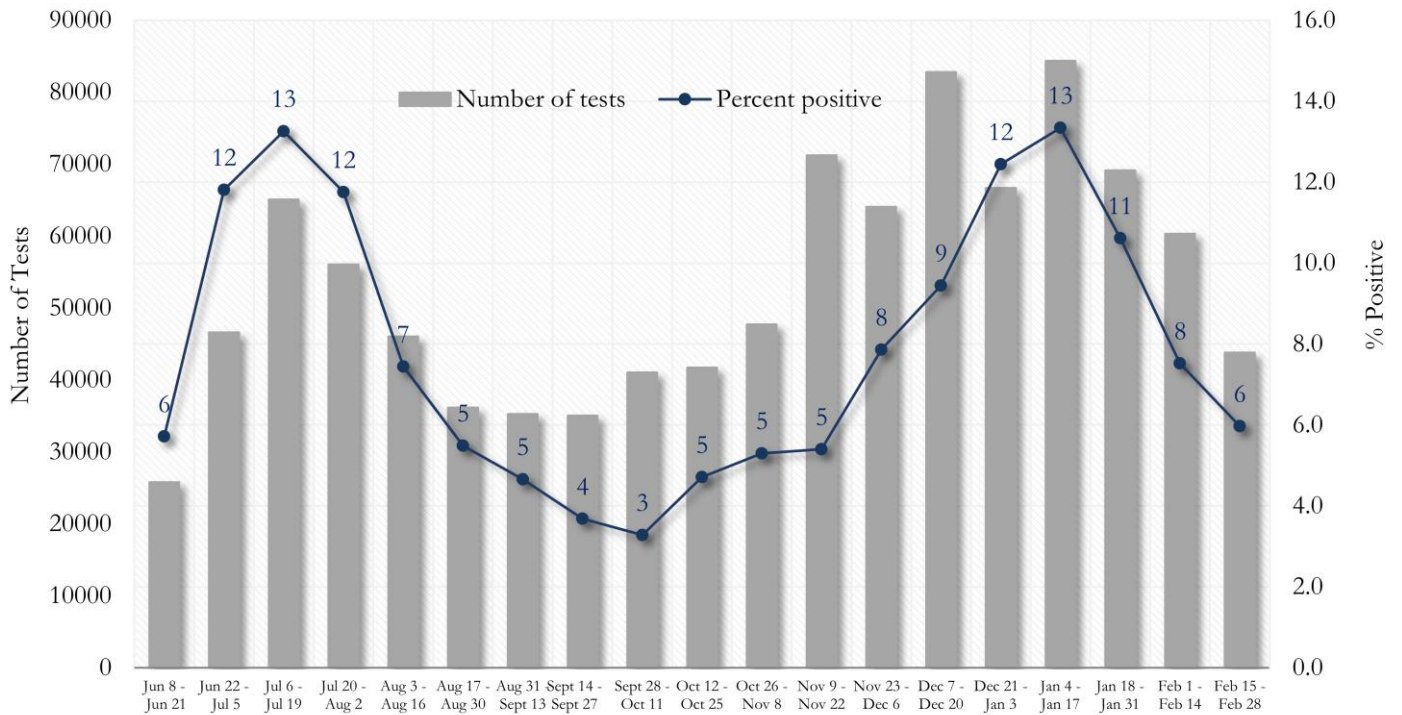
These data are generated using a fixed start date and counted forward in 14-day intervals. Using these time blocks allows for the stability in trends over time and accounts for delays in reporting lab results.

In the interest of keeping the reports concise and useful, the cumulative counts updated on a monthly basis can now be viewed between updates at the Fulton County Board of Health website [here](#).

Please visit the Georgia Department of Public Health Daily Status Report [here](#) for cumulative daily counts.

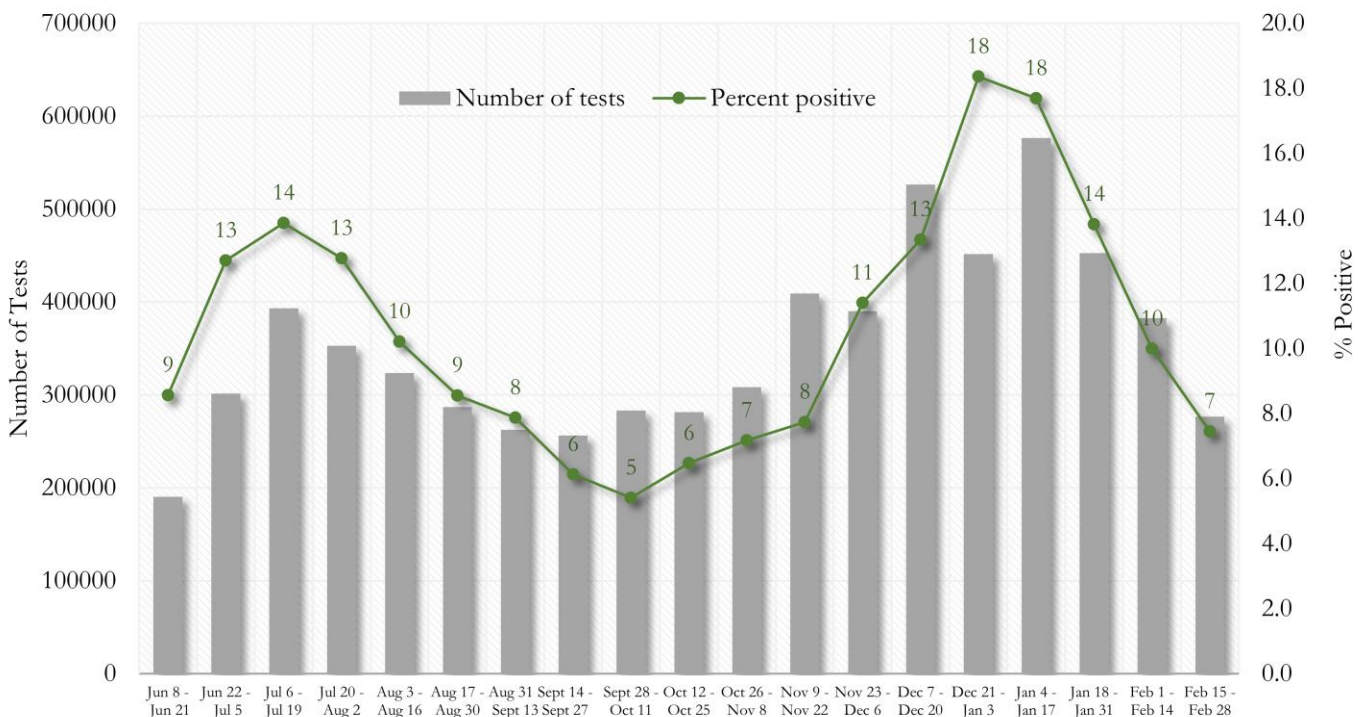
COVID-19 TESTING AND POSITIVITY IN FULTON COUNTY AND GEORGIA

Fig. 16. Trends in Positive COVID-19 Tests in Fulton County by 14-day Periods



*Data on Polymerase Chain Reaction (PCR) tests only included.

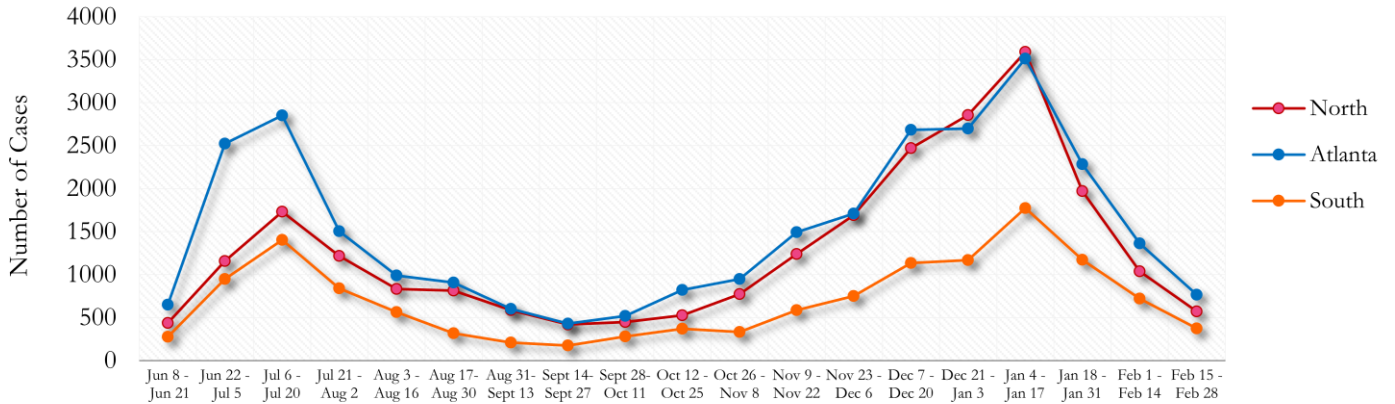
Fig. 17. Trends in Positive COVID-19 Tests in Georgia by 14-day Periods



*Data on Polymerase Chain Reaction (PCR) tests only included.

TRENDS IN COVID-19 CASES AMONG DEMOGRAPHIC GROUPS (14 DAY PERIODS)

Fig. 18. Trends in Geographic distribution of COVID-19 Cases in Fulton County by 14-day periods



In the past two weeks, the city of Atlanta has accounted for the majority of new cases.

*North - Includes all Fulton cities north of Atlanta (Alpharetta, Johns Creek, Milton, Mountain Park, Roswell, Sandy Springs)

*South - Includes all Fulton cities south of Atlanta (Chattahoochee Hills, College Park, East Point, Fairburn, Hapeville, Palmetto, South Fulton, and Union City)

Fig. 19. Trends in Racial Distribution of COVID-19 Cases in Fulton County by 14-day periods

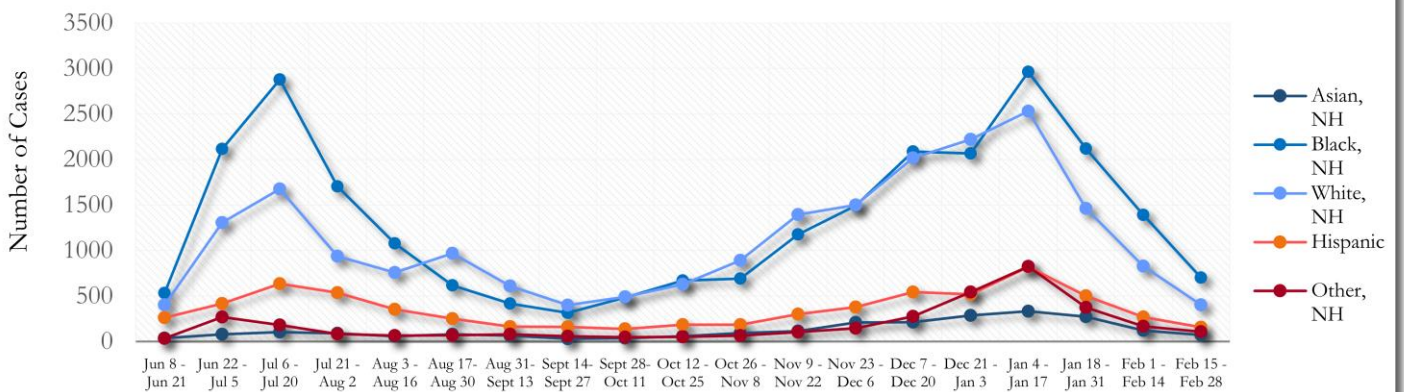
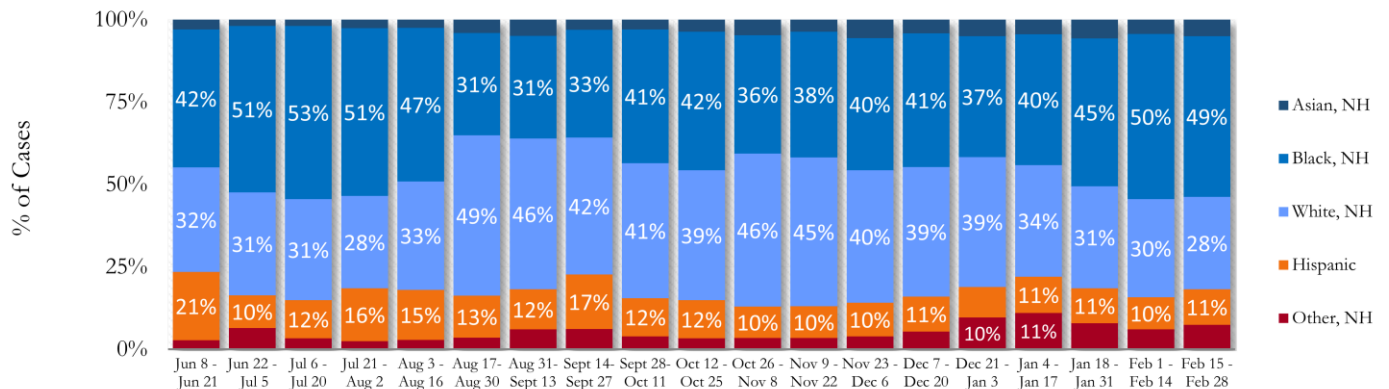


Fig. 20. Racial Distribution of COVID-19 Cases in Fulton County by 14-day periods



About 17% of all Fulton County COVID cases are missing data on patient race and ethnicity and in the past two weeks, about 18% of cases are missing this data.

Fig. 21. Trends in Gender Distribution of COVID-19 Cases in Fulton County by 14-day periods

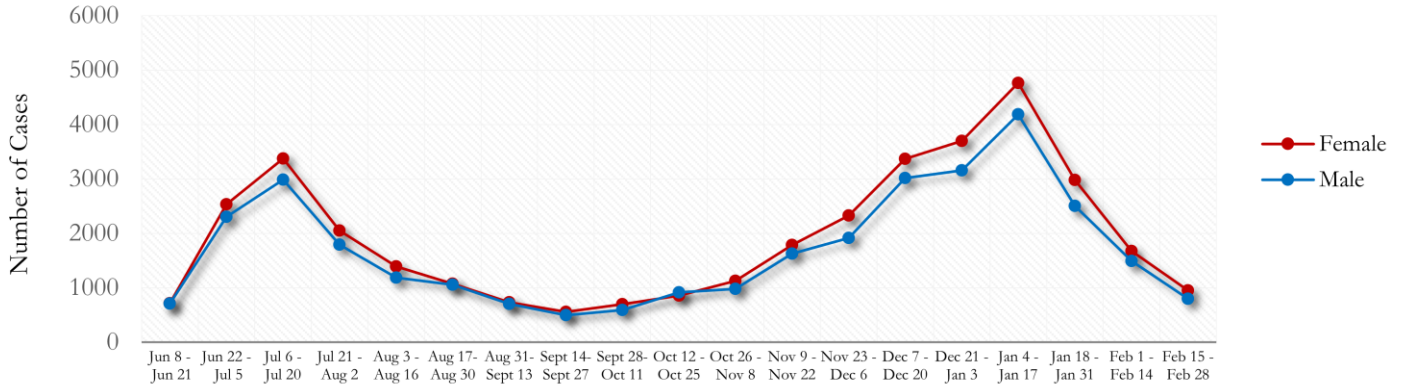
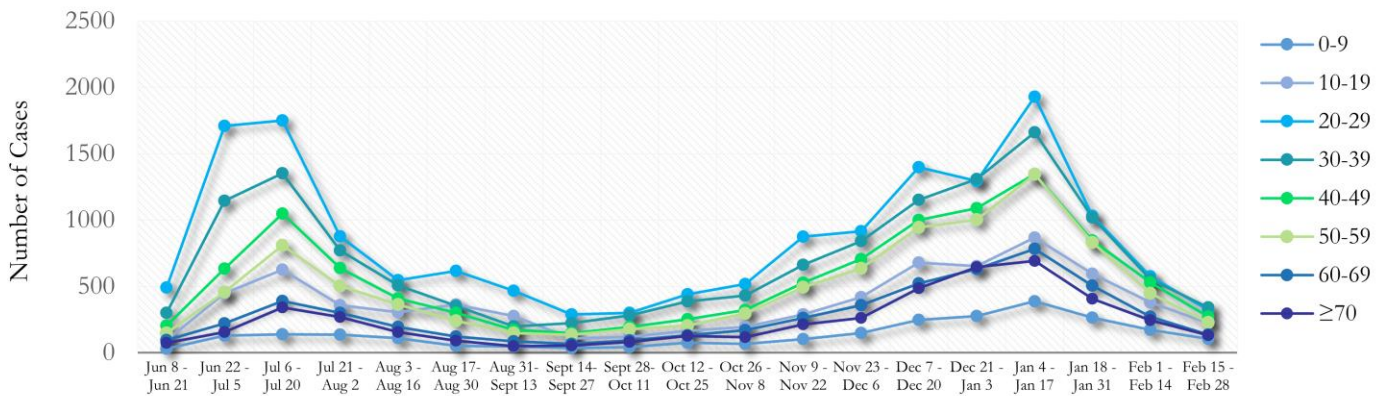
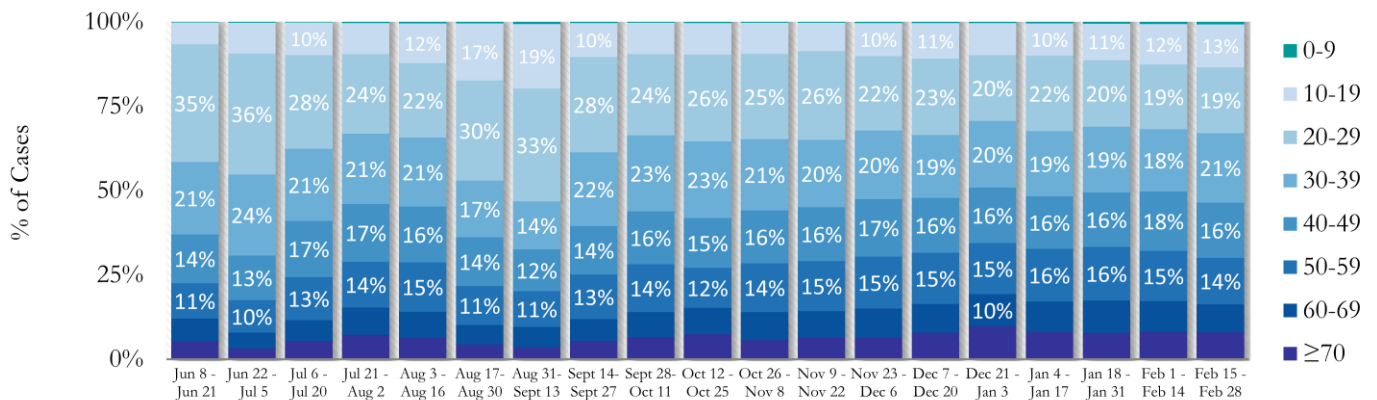


Fig. 22. Trends in Age Distribution of COVID-19 Cases in Fulton County by 14-day periods



In the most recent two weeks, 20-29 year olds and 30-39 year olds accounted for the majority of new cases.

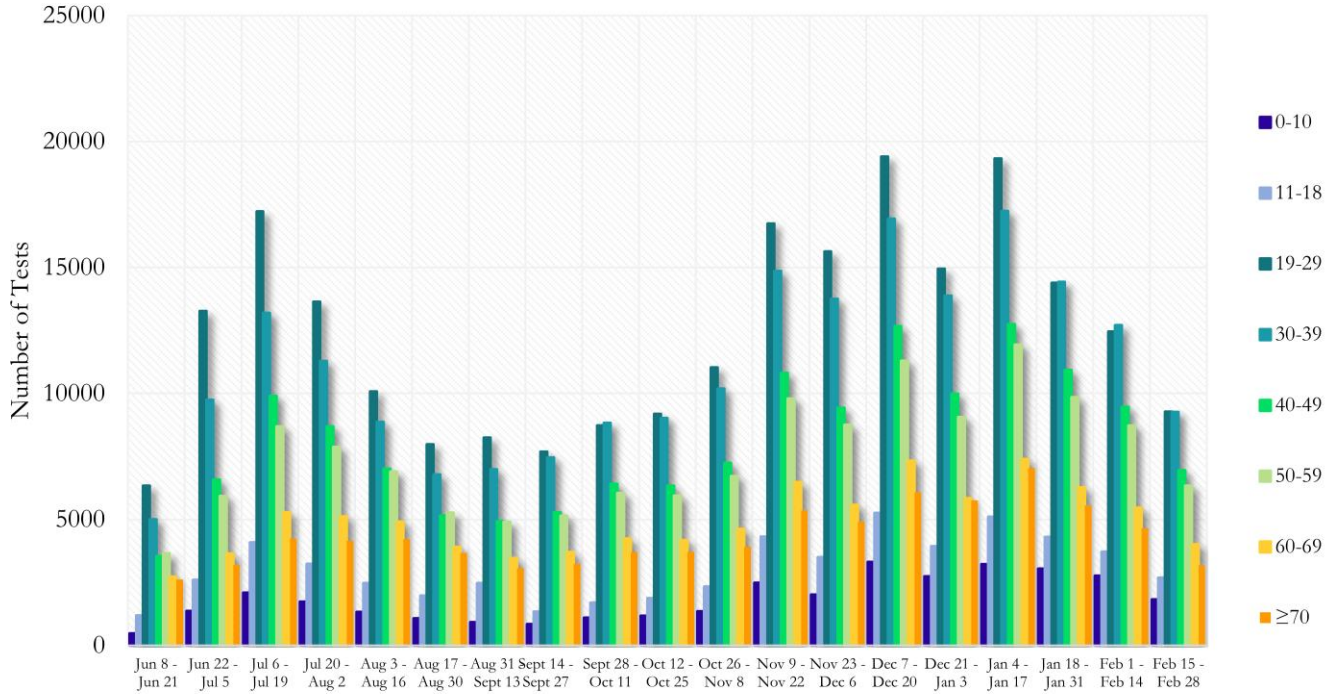
Fig. 23. Age Distribution of COVID-19 Cases in Fulton County by 14-day periods



Value labels under 10% are not shown.

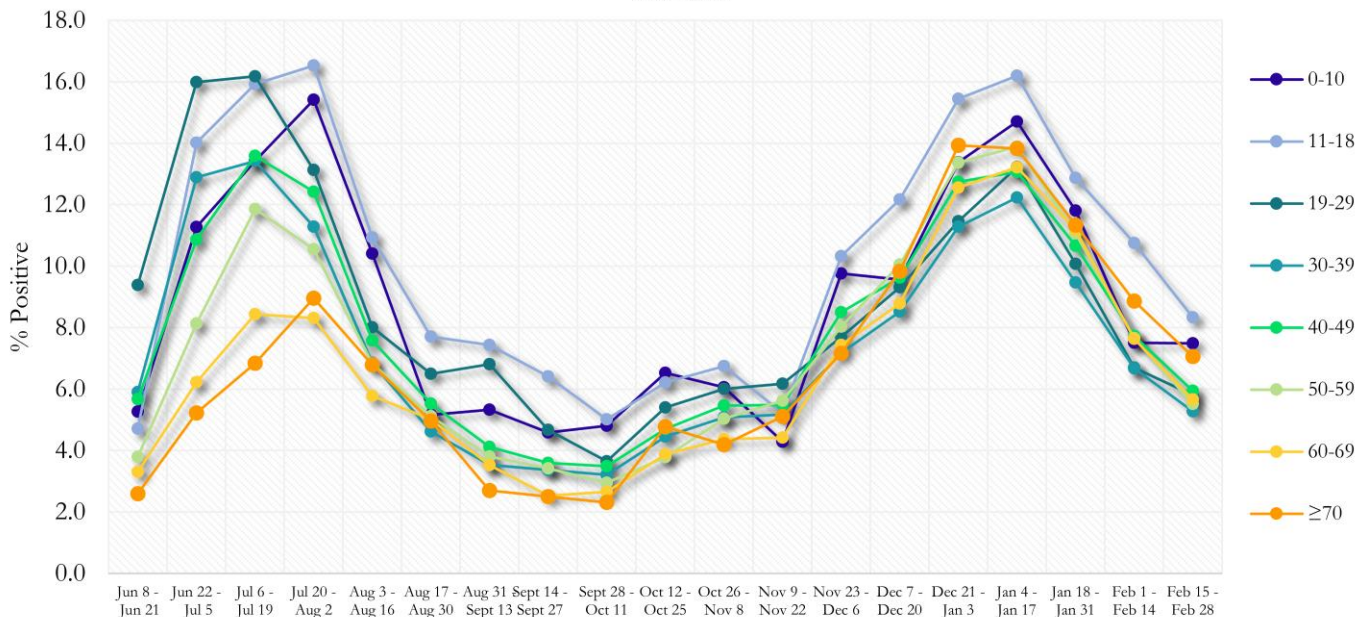
COVID-19 TESTING AND POSITIVITY IN FULTON COUNTY BY AGE AND RACE

Fig. 24. COVID-19 Tests by Age in Fulton County by 14-day Periods



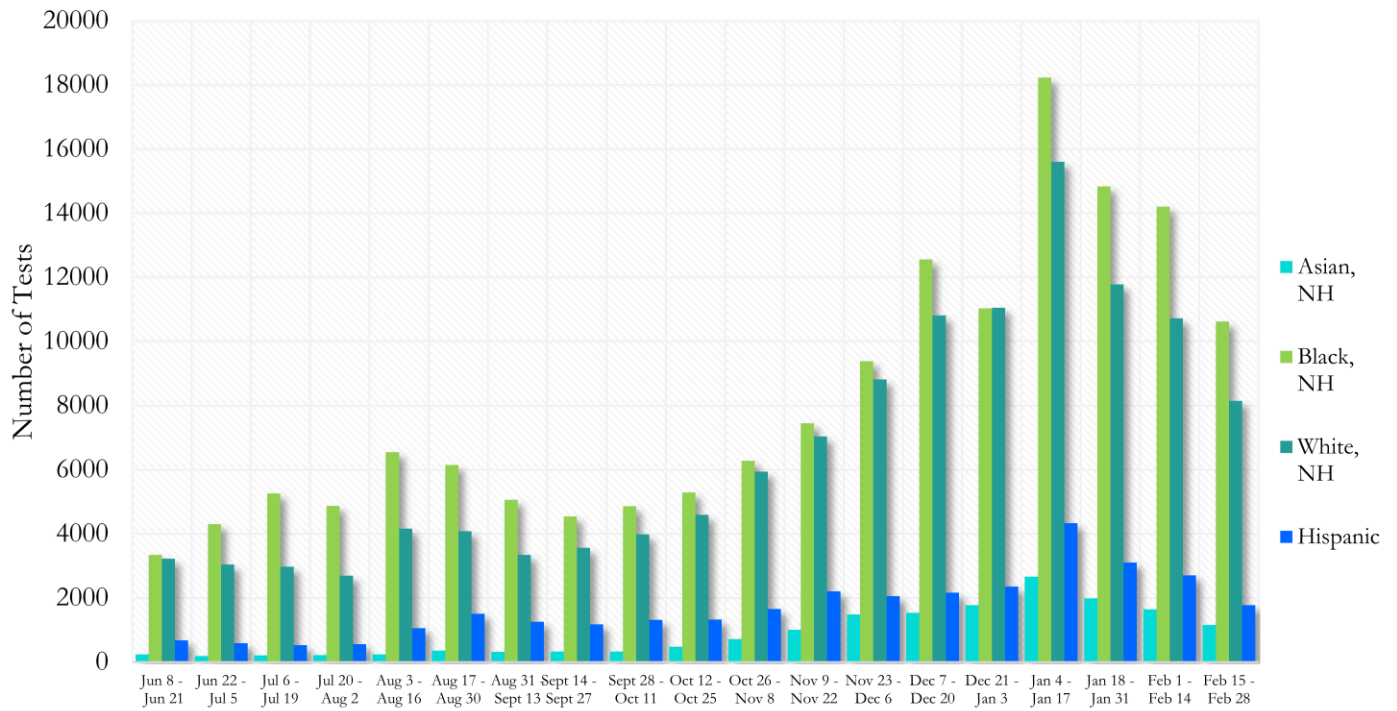
*Data on Polymerase Chain Reaction (PCR) tests only included.

Fig. 25. Percent Positive COVID-19 Tests by Age Group in Fulton County by 14-day Periods



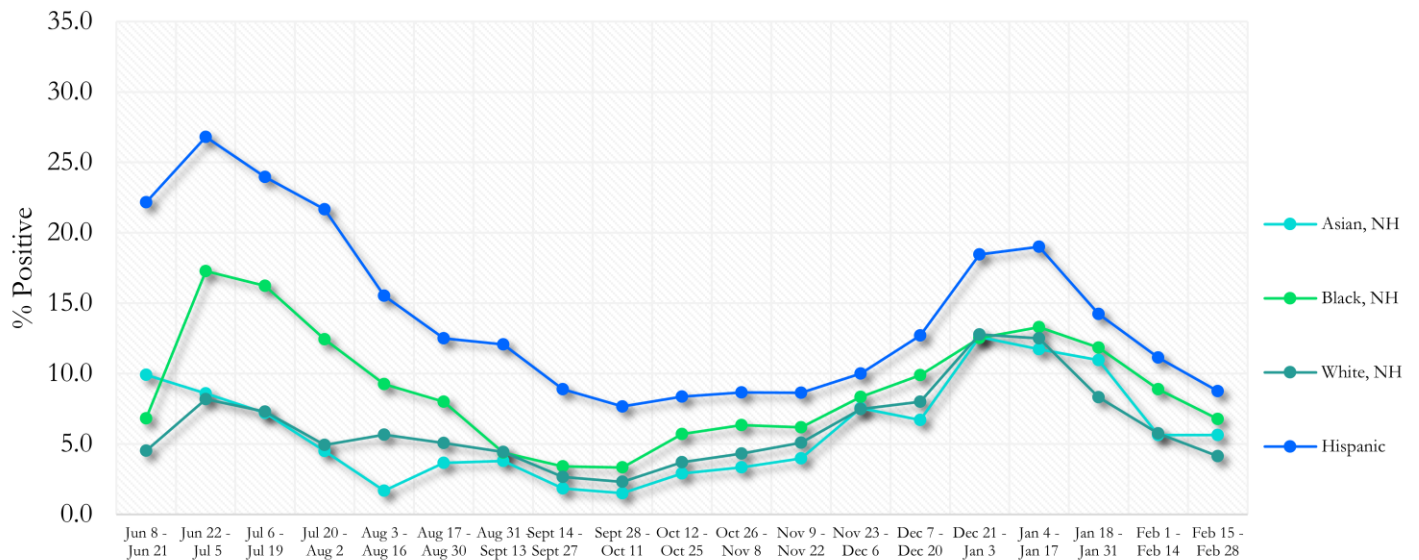
*Data on Polymerase Chain Reaction (PCR) tests only included.

Fig. 26. COVID-19 Tests by Race and Ethnicity in Fulton County by 14-day Periods



*Data on Polymerase Chain Reaction (PCR) tests only included. For the recent two weeks, 46% of test results did not have race/ethnicity information.

Fig. 27. Percent Positive COVID-19 Tests by Race and Ethnicity in Fulton County by 14-day Periods



*Data on Polymerase Chain Reaction (PCR) tests only included.

COVID-19 IN LONG-TERM CARE FACILITIES IN FULTON COUNTY

Older persons (aged 65 years and older) and persons who live in nursing homes or other long-term care facilities seem to be at higher risk for developing more serious complications from COVID-19. Extra precautions are recommended for individuals within this risk groups – Centers for Disease Control and Prevention (CDC 2020) <https://www.cdc.gov/coronavirus/2019-ncov/need-extra-precautions/people-at-higher-risk.html>

Fig. 28. Cumulative COVID-19 Diagnoses and Deaths in Fulton County Associated with Long-Term Care Facilities



LTCF → Long-term Care Facility (Includes residents and Staff)

CURRENT COVID-19 POSITIVITY:

Fig. 29. Percentage of LTCF Residents with Current COVID-19 Infection



*This data comes from facilities self-reporting to DPH and is thus subject to change as more facilities report or provide updated counts. Current total resident count = 4,150