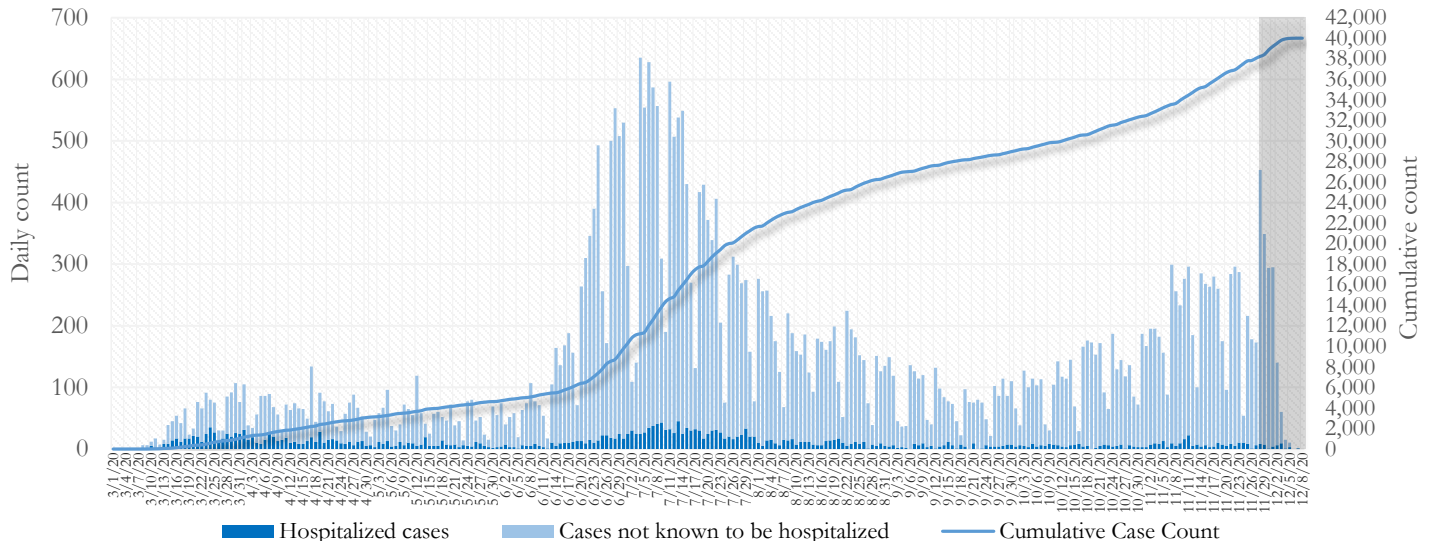


SUMMARY

- As of December 8, 2020, Fulton County has recorded **40,016 cases of the 2019 novel coronavirus (COVID-19)** and **688 confirmed COVID-19 deaths**. 94 deaths are currently being reviewed by GA DPH to confirm cause of death.
- Of the **3,628 new cases** between November 18 and December 1, the central portion of the county (Atlanta) accounted for 41% while the northern and southern parts accounted for 39% and 16% respectively.
- By city, new COVID-19 case rates range from 197.5 per 100,000 persons (Hapeville) to 411.7 per 100,000 persons (Sandy Springs). [**Fulton County Diagnoses Rates (per 100,000 persons): Cumulative – 3640.5; Incidence –330.1**]. See map showing incidence case rate by ZIP code on Pg.17.
- Among all persons diagnosed with COVID-19 in Fulton County since July 1, **5.6% required hospitalization and 1.2% died**.
- Of all testing done in Fulton County between November 23 and Dec 6, the **percent positivity rate was 7.7%**.

Fig 1. Daily and Cumulative COVID-19 cases in Fulton County, GA



*Counts shown reflect the number of confirmed cases as of 9:15 pm on 12/7/20 using the date of first positive sample collection. Where date of sample collection was not available or missing, the date of report creation in GA SENDSS was used instead. **Note:** Delays in data reporting may cause changes in data counts, particularly in the shaded portion. Data throughout this report are preliminary and subject to ongoing data cleaning processes, and thus are subject to change. This report includes data on confirmed PCR tests only. For data on antigen testing, see the [GA DPH County Indicator Reports here](#).

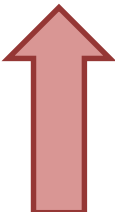
DISTRIBUTION OF COVID-19 CASES BY REGION

New cases: 41% of the new COVID-19 cases in the past 2 weeks occurred in Atlanta while 39% and 16% occurred in the Northern and Southern regions of the county respectively.

Fulton Region	% Cumulative count	% New cases*
Atlanta	43.8%	41.1%
North ¹	30.7%	38.6%
South ²	19.6%	15.9%
Unincorporated/Unknown	5.9%	4.4%

¹Includes all Fulton County cities north of Atlanta (Alpharetta, Johns Creek, Milton, Mountain Park, Roswell, Sandy Springs) |²Includes all cities south of Atlanta (Chattahoochee Hills, College Park, East Point, Fairburn, Hapeville, Palmetto, South Fulton, and Union City) ***New cases:** Cases diagnosed in the past 2 weeks only (between 11/18/20 – 12/1/20).

In the recent two week reporting period (11/18-12/1), there were more new cases of COVID-19 in Fulton County than the previous two weeks (11/4-11/17).



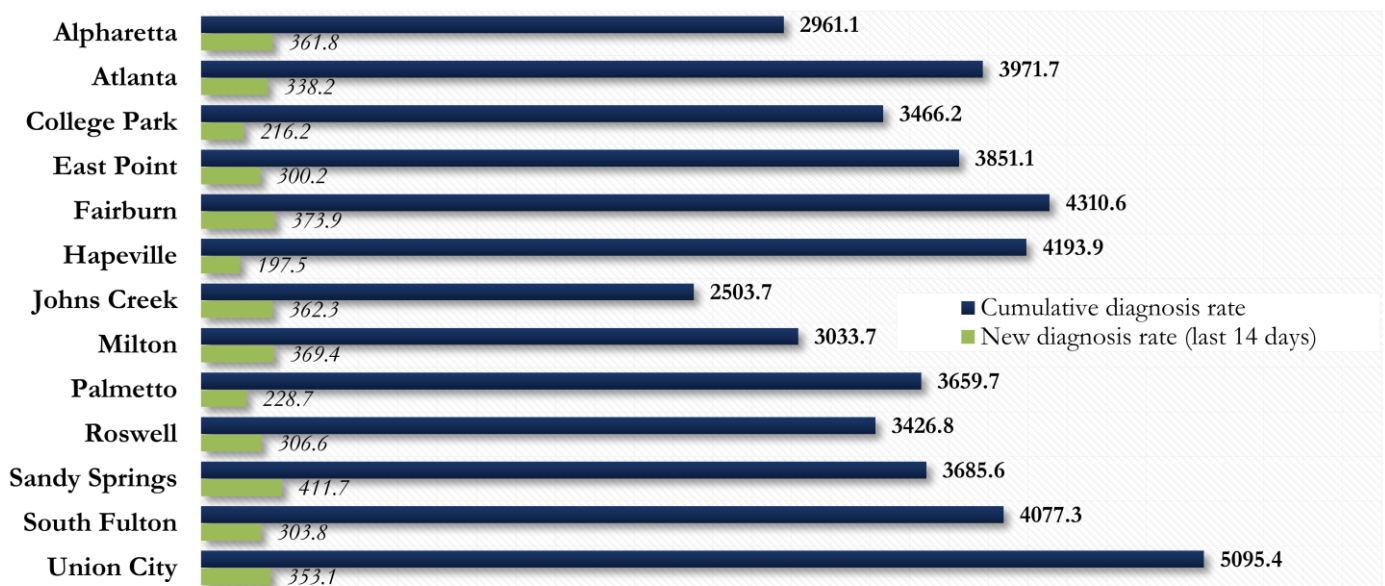
*Delayed a week to account for testing results turnaround time.

COVID-19 CASE COUNTS AND RATES BY CITY

	Prior (12/4/20)	Current Total (12/8/20)			New Cases (Period: 11/4/20 – 12/1/20) ¹			
	Count	Count	%	Cum. Rate ²	Recent 14 d. (11/18–12/1)	Prior 14 d. (11/4–11/17)	% change ³	Rate ⁴ (Last 14 d).
Alpharetta	1836	1915	4.8%	2961.1	234	177	↑ 32.2%	361.8
Atlanta	16973	17522	43.8%	3971.7	1492	1251	↑ 19.3%	338.2
Chattahoochee Hills	1	1	0.0%	-	0	0	-	-
College Park	473	481	1.2%	3466.2	30	32	↓ 6.3%	216.2
East Point	1302	1347	3.4%	3851.1	105	91	↑ 15.4%	300.2
Fairburn	610	634	1.6%	4310.6	55	47	↑ 17.0%	373.9
Hapeville	265	276	0.7%	4193.9	13	19	↓ 31.6%	197.5
Johns Creek	1977	2094	5.2%	2503.7	303	207	↑ 46.4%	362.3
Milton	1107	1158	2.9%	3033.7	141	100	↑ 41.0%	369.4
Mountain Park	10	10	0.0%	1600.0	0	<10	-	-
Palmetto	158	160	0.4%	3659.7	10	<10	↑ 11.1%	228.7
Roswell	3123	3230	8.1%	3426.8	289	236	↑ 22.5%	306.6
Sandy Springs	3729	3885	9.7%	3685.6	434	339	↑ 28.0%	411.7
South Fulton	3744	3878	9.7%	4077.3	289	225	↑ 28.4%	303.8
Union City	1033	1068	2.7%	5095.4	74	70	↑ 5.7%	353.1
Unknown	3675	2357	5.9%	-	156	107	-	-

¹**New cases:** Cases diagnosed in most recent 28 days (based on reported dates of positive sample collection). To allow for lag in reporting results of new diagnoses from samples collected in the most recent week, data used for incident diagnoses analyses were moved back by one week. ²**Cumulative diagnosis rate:** Population estimates from US Census Bureau used to calculate cumulative diagnoses rate. All rates shown are per 100,000 persons. ³**% change:** These reflect the percentage increase or decrease in new diagnoses between the 14 days preceding the most recent 7 days and the 14 days preceding that. ⁴**(Incidence) Rate:** Rate of new diagnoses in the last 14 day period preceding the immediate past week. ****Data cleaning** (either during case interviews or address geo-coding) may lead to reassignment of few cases from one territory to another based on their corrected addresses. These may appear as “decreases” when compared to the previous day’s count. These do not reflect errors in the data collection or analysis process but only reflect the minor day-to-day fluctuations in case counts that arise in an evolving public health database like COVID’s. **Note:** All data reported are preliminary and subject to change.

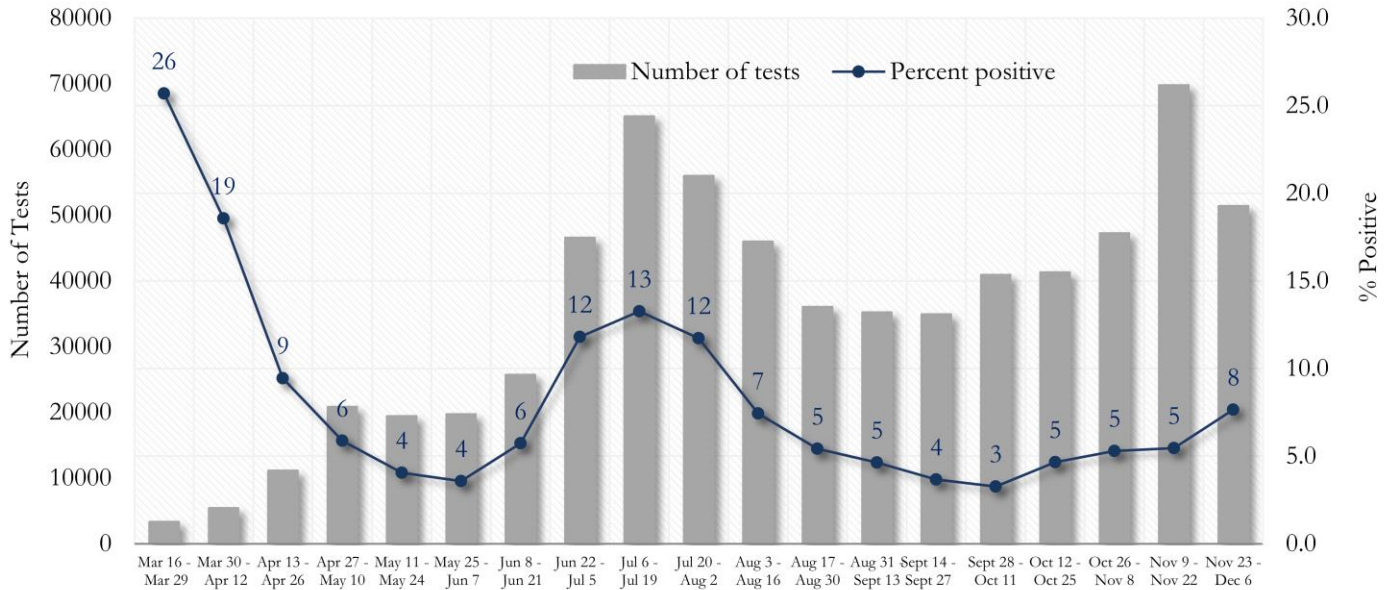
Fig. 2. Incident & Cumulative Diagnoses Rates for COVID-19 by City



*Rates shown are per 100,000 persons | **Note:** Mass testing in specific locations (e.g. long term care facilities) may cause sharp increases in the cumulative rate of COVID-19 diagnosis in those territories. All data shown are preliminary and are subject to change as testing results get updated.

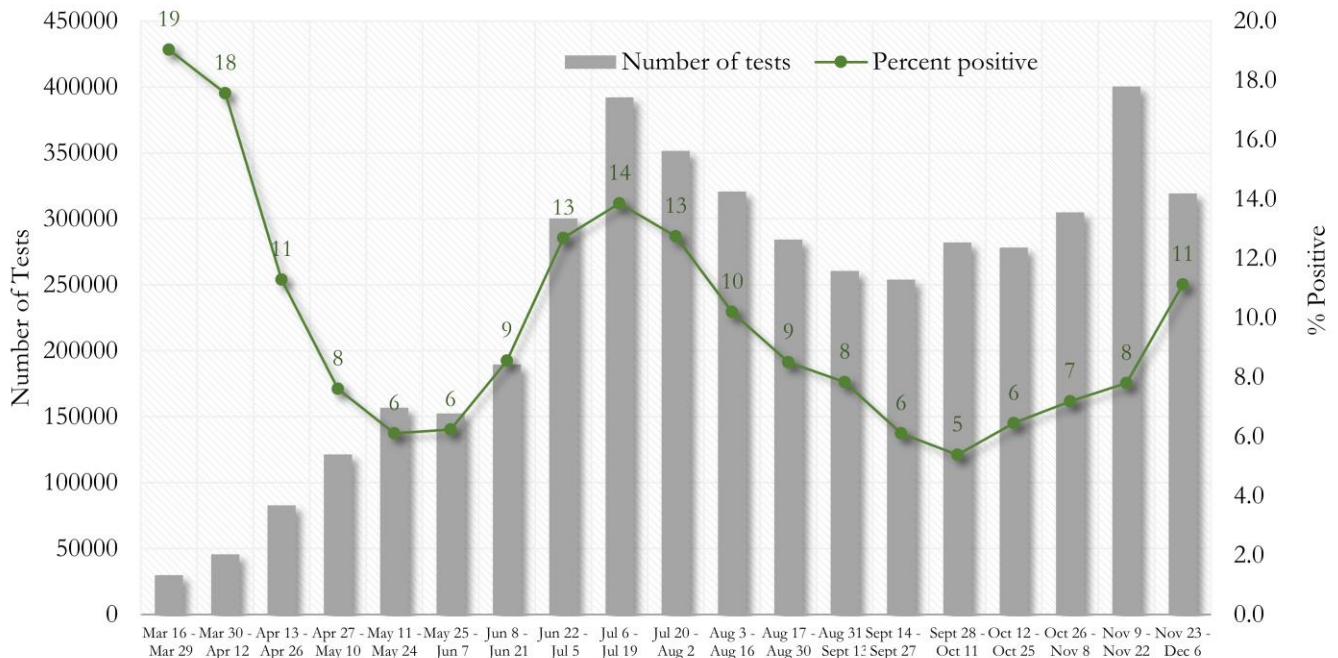
COVID-19 TESTING AND POSITIVITY IN FULTON COUNTY AND GEORGIA

Fig. 3. Trends in Positive COVID-19 Tests in Fulton County by 14-day Periods



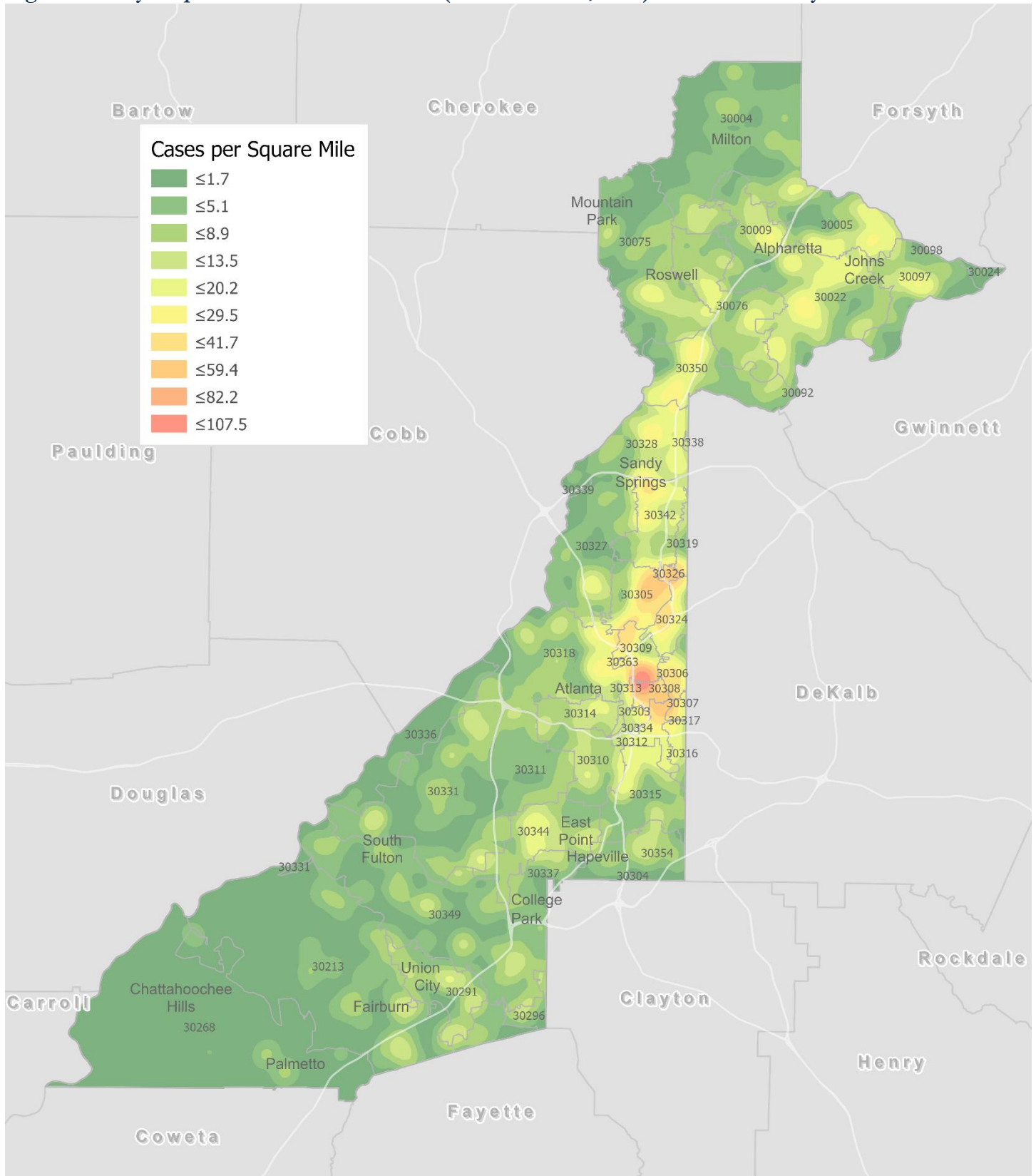
*Data on Polymerase Chain Reaction (PCR) tests only included. This rate is subject to change as more test results are reported.

Fig. 4. Trends in Positive COVID-19 Tests in Georgia by 14-day Periods



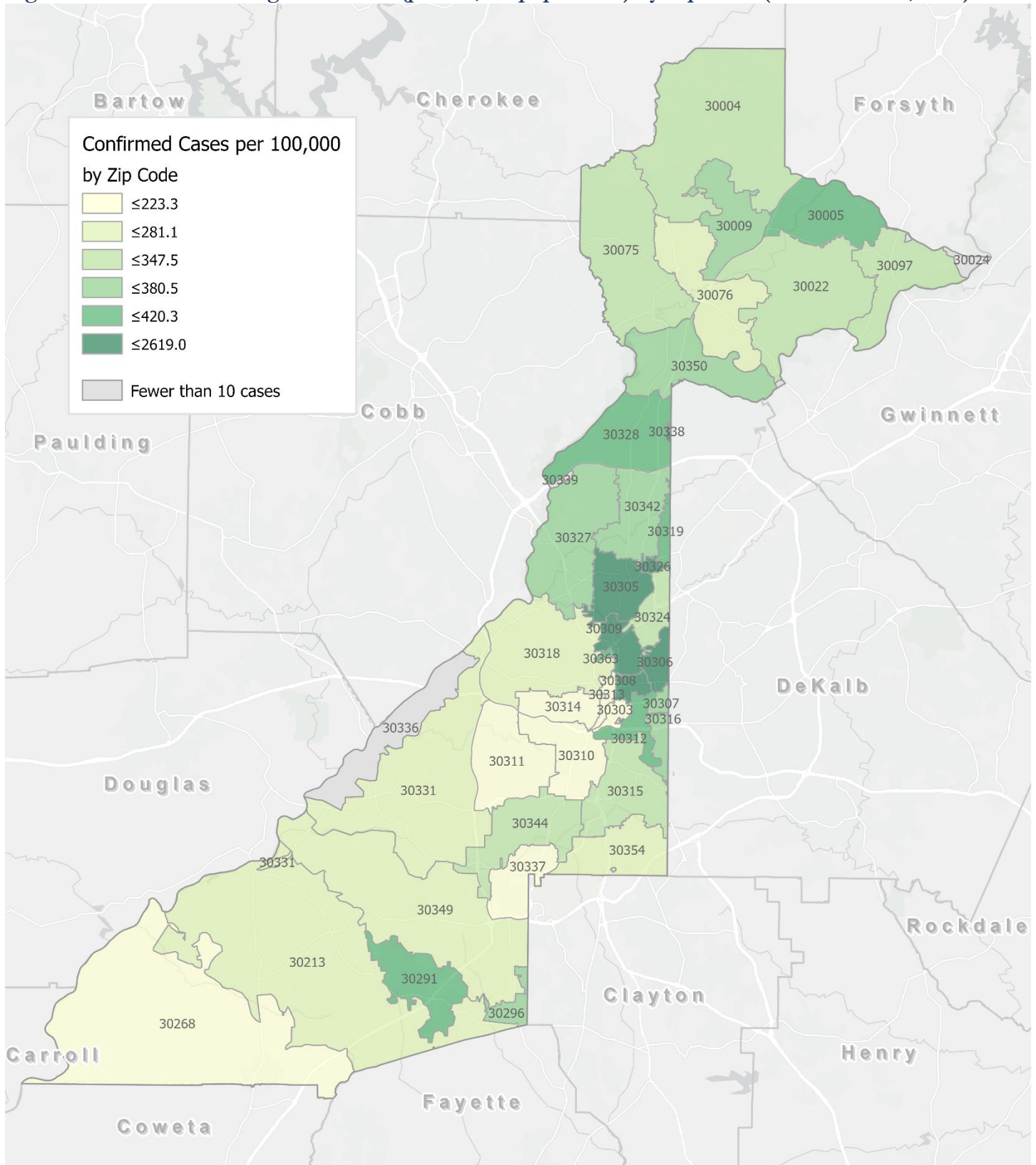
*Data on Polymerase Chain Reaction (PCR) tests only included. This rate is subject to change as more test results are reported.

Fig. 5. Density Map – New COVID-19 Cases (Nov 18– Dec 1, 2020) in Fulton County



New COVID-19 cases: Cases diagnosed in most recent 14 days (based on reported dates of positive sample collection). To allow for lag in reporting results of positive cases from samples collected in the immediate past 7 days, data used for incident diagnoses analyses are moved back by one week. Map reflects new COVID-19 cases diagnosed between Nov 18th and Dec 1st, 2020 across Fulton County, excluding LTCF cases.

Fig. 6. New COVID-19 Diagnoses Rates (per 100,000 population) by Zip Code (Nov 18– Dec 1, 2020)



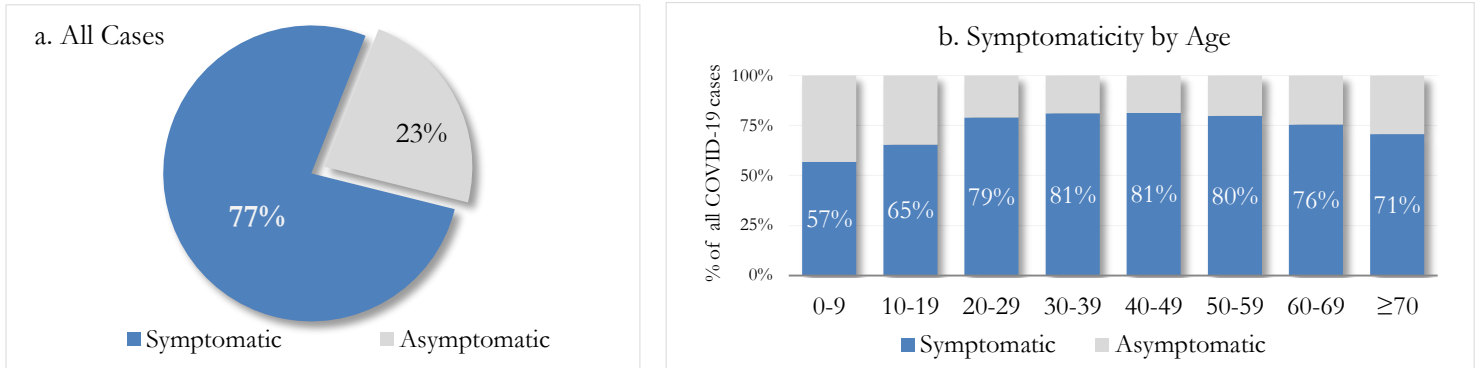
*Rates shown are per 100,000 populations.

New COVID-19 cases: Cases diagnosed in most recent 14 days (based on reported dates of positive sample collection). To allow for lag in reporting results of positive cases from samples collected in the immediate past 7 days, data used for incident diagnoses analyses are moved back by one week. Data used excludes outbreak-related cases at long-term care facilities and map shown reflects only the new non-LTCF cases diagnosed between the dates shown in map title. See page 17 for zip code break down table.

REPORTING SYMPTOMS AMONG PERSONS WITH COVID-19 IN FULTON

People with COVID-19 have reported a wide range of symptoms ranging from mild symptoms to severe illness. Symptoms may appear 2-14 days after exposure to the virus. Symptoms reported include: cough, shortness of breath/difficulty breathing, fever, chills, muscle pain, headache, sore throat, congestion, nausea or vomiting, diarrhea, or new loss of taste or smell – Centers for Disease Control and Prevention (CDC)
<https://www.cdc.gov/coronavirus/2019-ncov/symptoms-testing/symptoms.html>

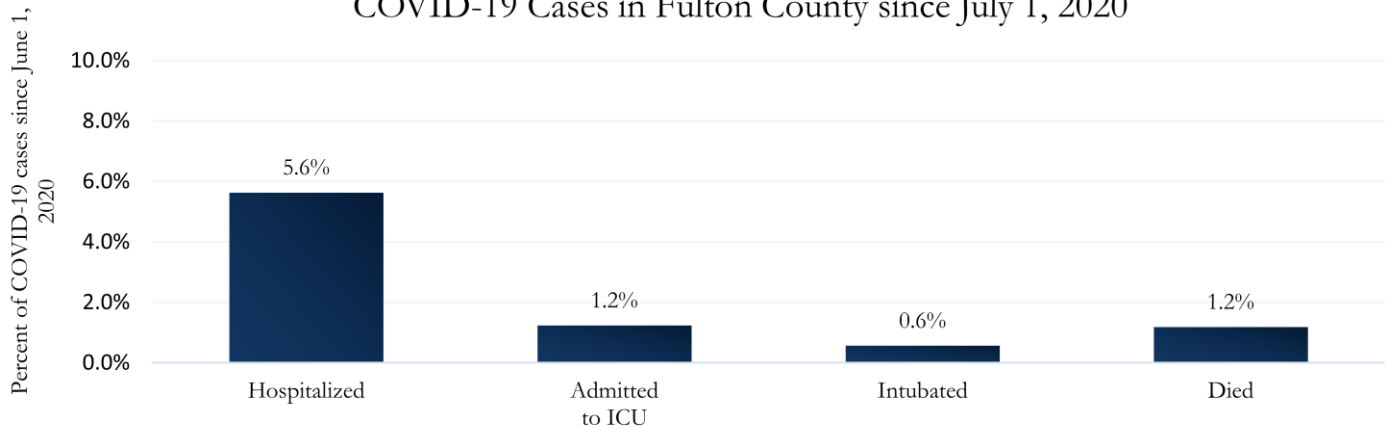
Fig. 7a & b. Total Proportion Reporting Symptoms in Fulton County



COVID-19 cases who have been case interviewed or had medical charts reviewed as of 12/7/20 only. n = 26,369

COVID-19 HOSPITALIZATIONS, ICU ADMISSIONS AND DEATHS IN FULTON

Fig. 8. Hospitalizations, ICU Admissions, Intubations, and Deaths among COVID-19 Cases in Fulton County since July 1, 2020



DEMOGRAPHIC DISTRIBUTIONS – COVID-19 CASES AND DEATHS

A. Distribution of COVID-19 cases by gender, age, and race in Fulton County by Fulton Region

	North Fulton Cities ¹ Count (%)	Atlanta Count (%)	South Fulton Cities ² Count (%)	Unknown City Count (%)	All Fulton Count (%)
Total COVID-19 cases	12292	17522	7845	2357	40016
Gender: Female	6336 (51.5%)	8744 (49.9%)	4495 (57.3%)	1166 (49.5%)	20741 (51.8%)
Male	5844 (47.5%)	8528 (48.7%)	3283 (41.8%)	1122 (47.6%)	18777 (46.9%)
Unknown*	112 (0.9%)	250 (1.4%)	67 (0.9%)	69 (2.9%)	498 (1.2%)
Age: 0-9	422 (3.4%)	359 (2.0%)	270 (3.4%)	61 (2.6%)	1112 (2.8%)
10-19	1704 (13.9%)	1290 (7.4%)	579 (7.4%)	156 (6.6%)	3729 (9.3%)
20-29	2665 (21.7%)	5274 (30.1%)	1473 (18.8%)	610 (25.9%)	10022 (25.0%)
30-39	1895 (15.4%)	3891 (22.2%)	1631 (20.8%)	496 (21.0%)	7913 (19.8%)
40-49	1958 (15.9%)	2280 (13.0%)	1427 (18.2%)	358 (15.2%)	6023 (15.1%)
50-59	1861 (15.1%)	1862 (10.6%)	1103 (14.1%)	313 (13.3%)	5139 (12.8%)
60-69	968 (7.9%)	1204 (6.9%)	727 (9.3%)	185 (7.8%)	3084 (7.7%)
≥70	812 (6.6%)	1310 (7.5%)	627 (8.0%)	169 (7.2%)	2918 (7.3%)
Unknown*	<10	52 (0.3%)	<10	<10	76 (0.2%)
Race: Asian, NH	574 (4.7%)	352 (2.0%)	38 (0.5%)	46 (2.0%)	1010 (2.5%)
Black, NH	1407 (11.4%)	7647 (43.6%)	5701 (72.7%)	827 (35.1%)	15582 (38.9%)
White, NH	5560 (45.2%)	5045 (28.8%)	399 (5.1%)	598 (25.4%)	11602 (29.0%)
Hispanic	2164 (17.6%)	1145 (6.5%)	647 (8.2%)	222 (9.4%)	4178 (10.4%)
Other, NH	476 (3.9%)	616 (3.5%)	181 (2.3%)	88 (3.7%)	1361 (3.4%)
Unknown*	2111 (17.2%)	2717 (15.5%)	879 (11.2%)	576 (24.4%)	6283 (15.7%)

*Unknown includes cases not yet interviewed.

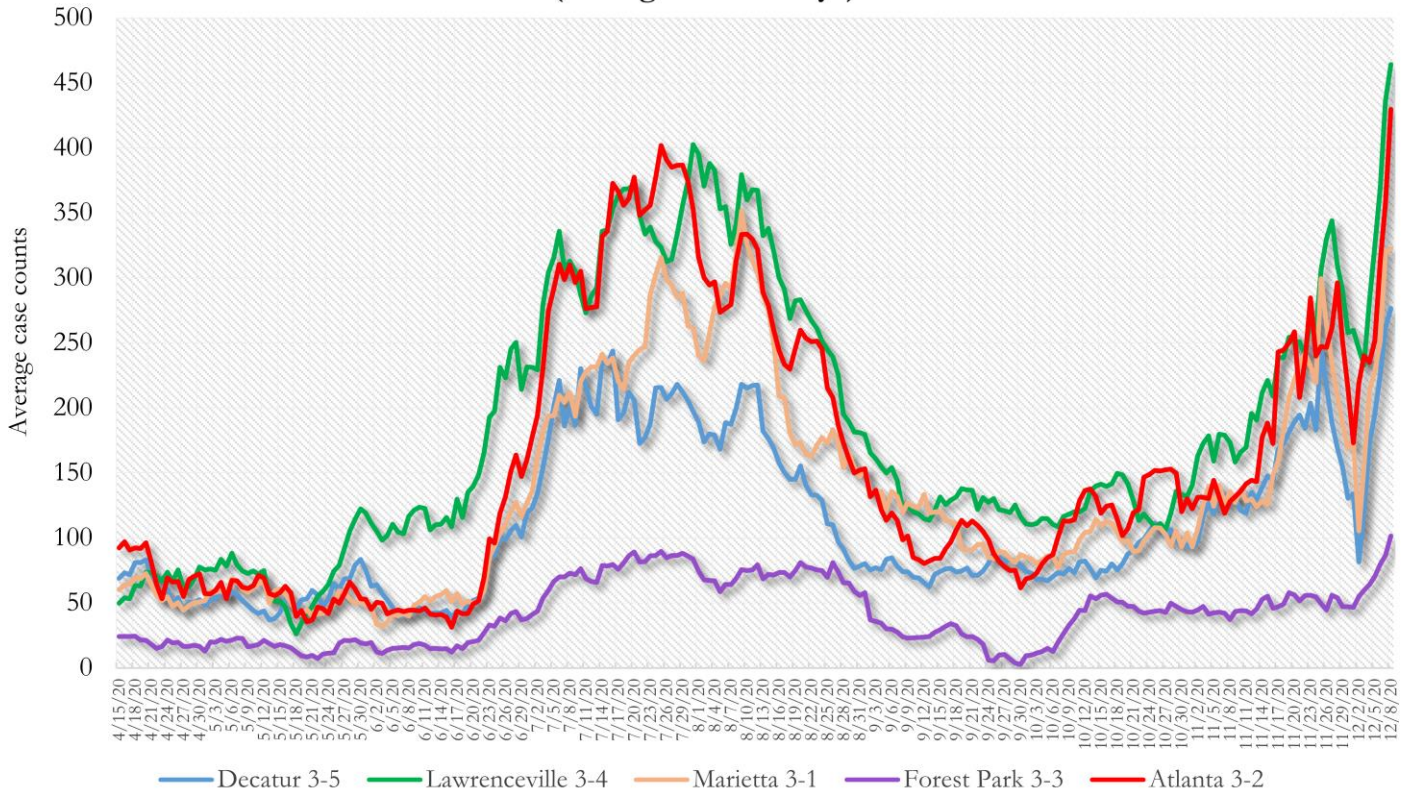
B. Distribution of COVID-19 deaths by gender, age, and race in Fulton County by Fulton Region

	North Fulton Cities ¹ Count (%)	Atlanta Count (%)	South Fulton Cities ² Count (%)	Unknown City Count (%)	All Fulton Count (%)
Total COVID-19 deaths	150	331	180	27	688
Gender: Female	70 (46.7%)	151 (45.6%)	90 (50.0%)	12 (44.4%)	323 (46.9%)
Male	80 (53.3%)	180 (54.4%)	90 (50.0%)	15 (55.6%)	365 (53.1%)
Unknown	0	0	0	0	0
Age: ≤ 29	<10	<10	<10	0	<10
30-39	<10	<10	<10	<10	13 (1.9%)
40-49	<10	<10	10 (5.6%)	<10	27 (3.9%)
50-59	<10	28 (8.5%)	21 (11.7%)	<10	60 (8.7%)
60-69	18 (12.0%)	65 (19.6%)	41 (22.8%)	<10	126 (18.3%)
≥70	118 (78.7%)	219 (66.2%)	103 (57.2%)	17 (63.0%)	457 (66.4%)
Unknown	0	0	0	0	0
Race: Asian, NH	<10	<10	<10	<10	12 (1.7%)
Black, NH	27 (18.0%)	271 (81.9%)	146 (81.1%)	11 (40.7%)	455 (66.1%)
White, NH	104 (69.3%)	47 (14.2%)	23 (12.8%)	13 (48.1%)	187 (27.2%)
Hispanic	15 (10.0%)	<10	<10	<10	29 (4.2%)
Other, NH	0	<10	<10	0	<10
Unknown	0	<10	<10	0	<10

¹Includes all Fulton County cities north of Atlanta (Alpharetta, Johns Creek, Milton, Mountain Park, Roswell, Sandy Springs) ²Includes all cities south of Atlanta (College Park, Chattahoochee Hills, East Point, Fairburn, Hapeville, Palmetto, South Fulton, Union City). **Note:** All data reported are preliminary and subject to change. This table includes data on all confirmed COVID-19 deaths and is subject to change as GA DPH completes cause of death confirmation processes.

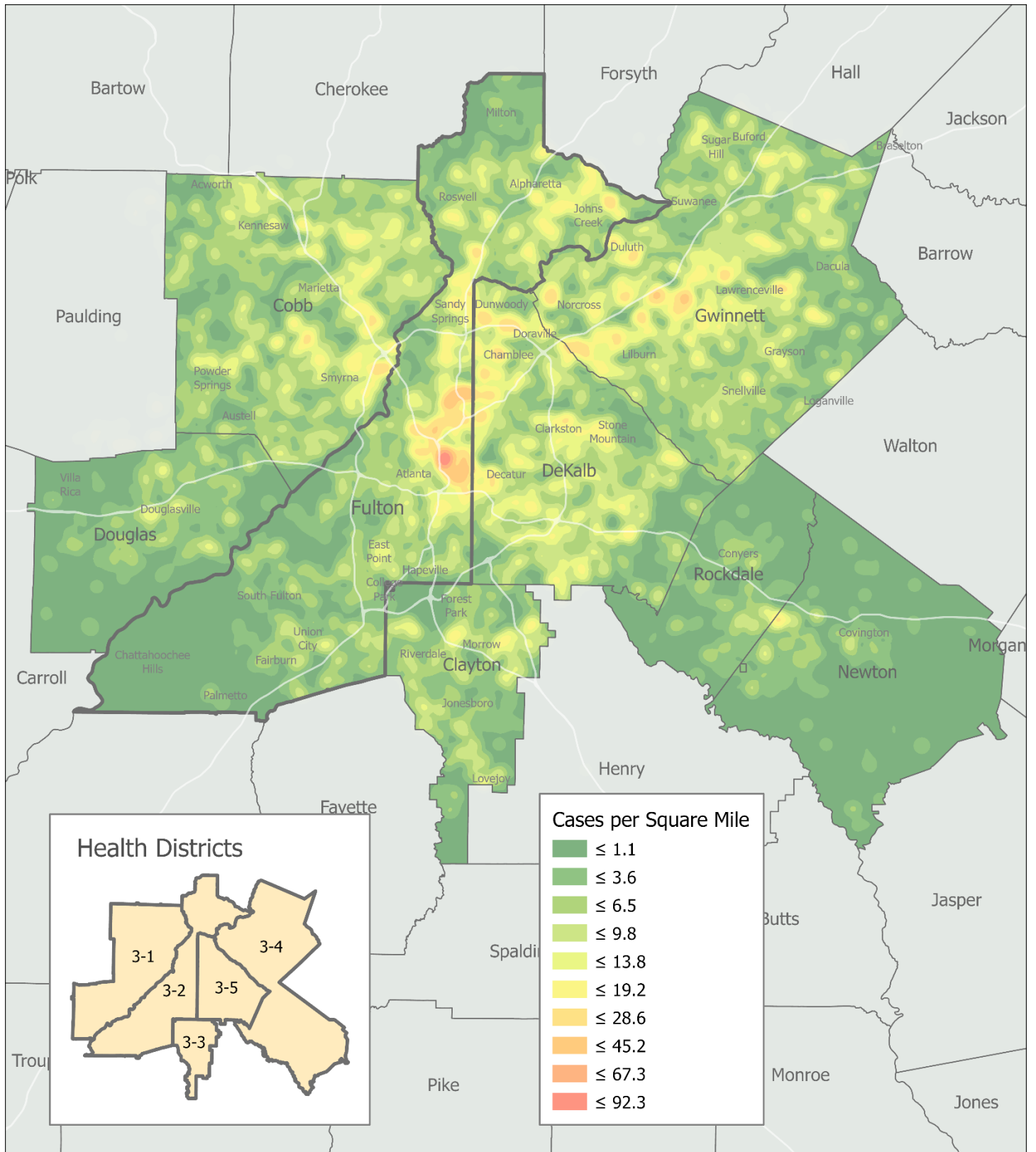
COVID-19 CASE TRENDS IN FULTON AND SURROUNDING DISTRICTS

**Fig. 9. Daily Case Counts for Atlanta Metro Districts
(Averaged over 7 days)**



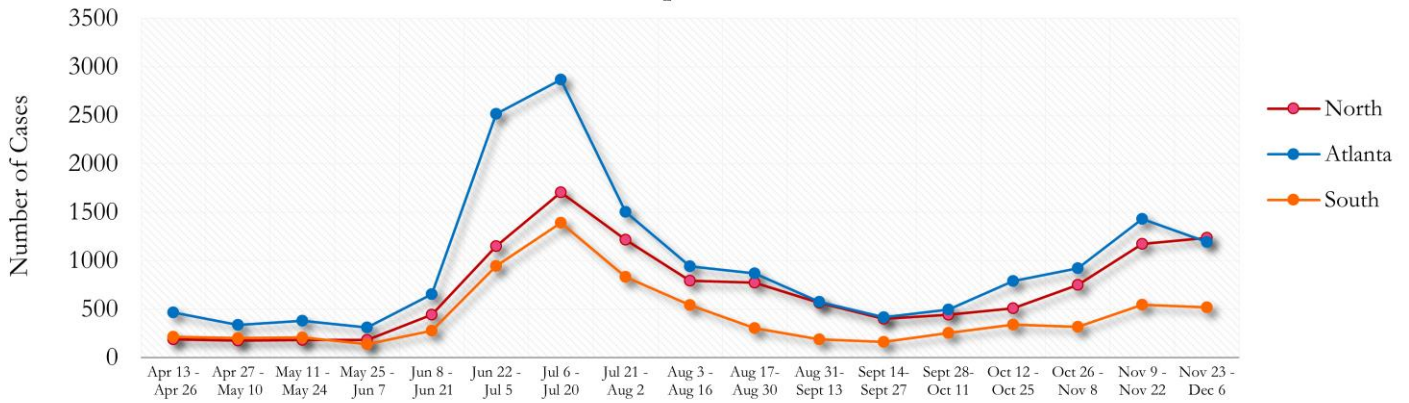
*Graph shows the average number of cases calculated from the daily cumulative case counts in the metro Atlanta districts. Increases in daily cumulative case counts may include cases diagnosed earlier during the pandemic but were only recently reported to the state as cases diagnosed belonging to these districts. Delays in data reporting may cause the trend line to appear as decreasing.

Fig. 10. COVID-19 Cases in Fulton County and Surrounding Districts (Nov 18 – Dec 1, 2020)



TRENDS IN COVID-19 CASES AMONG DEMOGRAPHIC GROUPS (14 DAY PERIODS)

Fig. 11. Trends in Geographic distribution of COVID-19 Cases in Fulton County by 14-day periods



In the past two weeks, the northern region of Fulton County accounted for the majority of new cases.

*North - Includes all Fulton cities north of Atlanta (Alpharetta, Johns Creek, Milton, Mountain Park, Roswell, Sandy Springs)

*South - Includes all Fulton cities south of Atlanta (College Park, Chattahoochee Hills, East Point, Fairburn, Hapeville, Palmetto, South Fulton, and Union City)

Fig. 12. Trends in Racial Distribution of COVID-19 Cases in Fulton County by 14-day periods

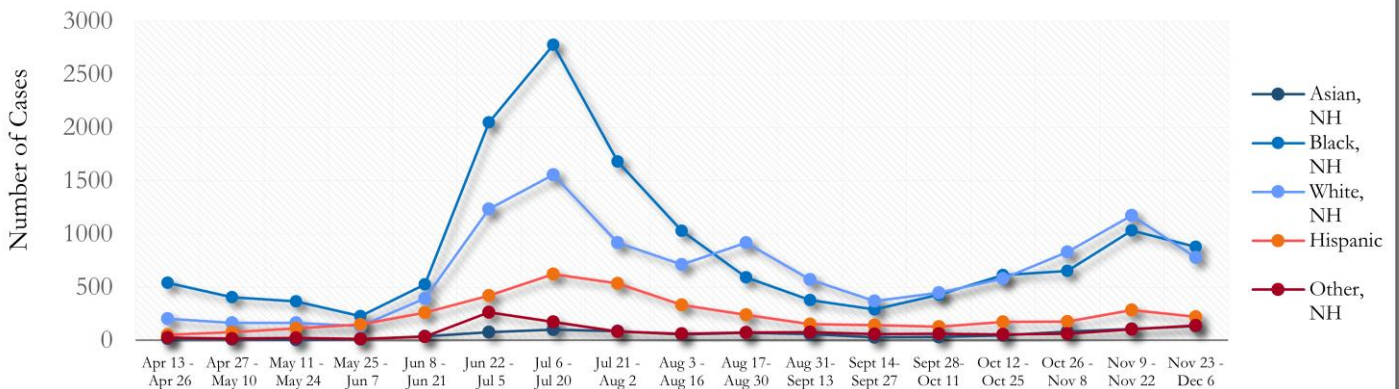
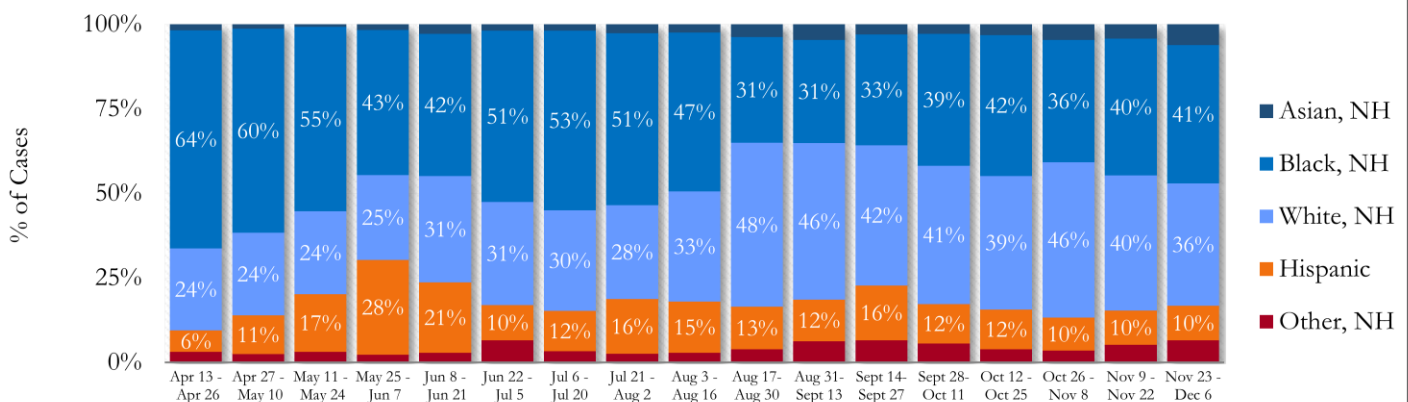


Fig. 13. Racial Distribution of COVID-19 Cases in Fulton County by 14-day periods



About 16% of COVID cases are missing data on patient race and ethnicity. The majority of new cases in the past two weeks were Black, NH (41%) and White, NH (36%).

Fig. 14. Trends in Gender Distribution of COVID-19 Cases in Fulton County by 14-day periods

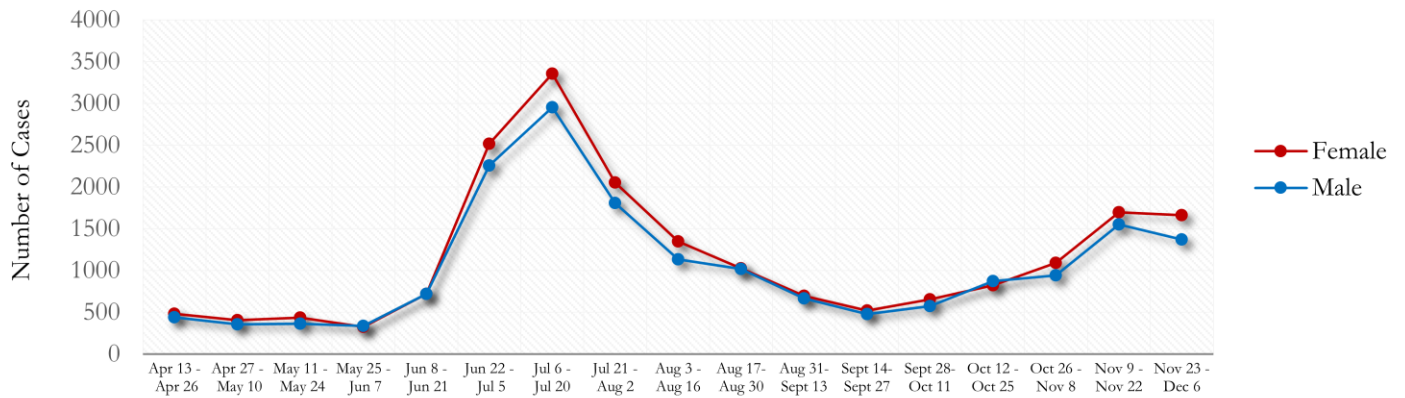
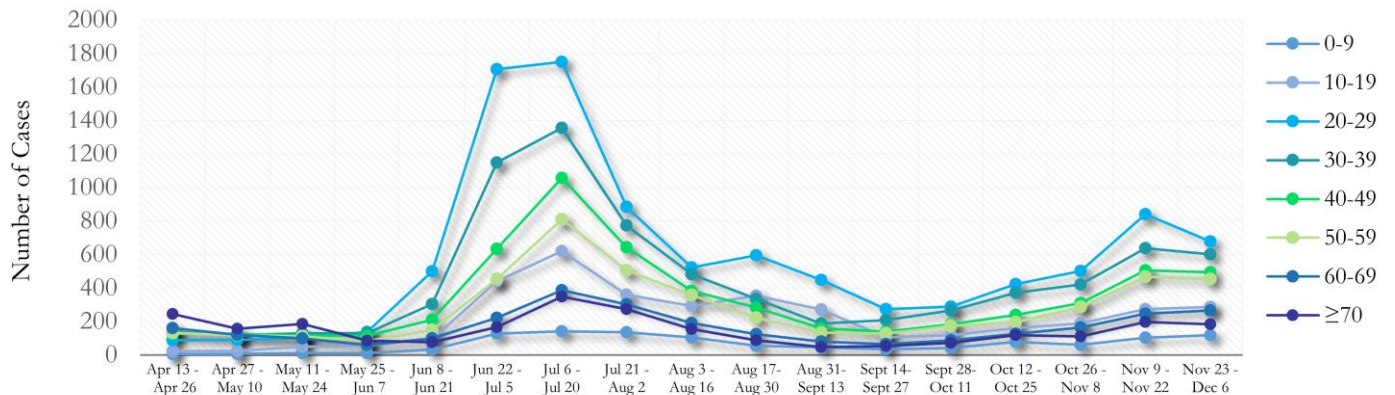
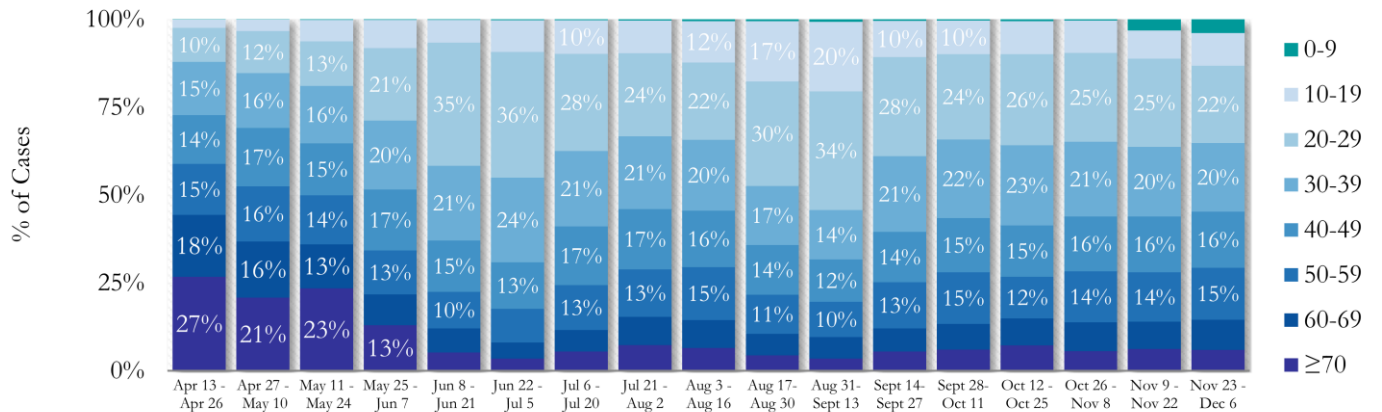


Fig. 15. Trends in Age Distribution of COVID-19 Cases in Fulton County by 14-day periods



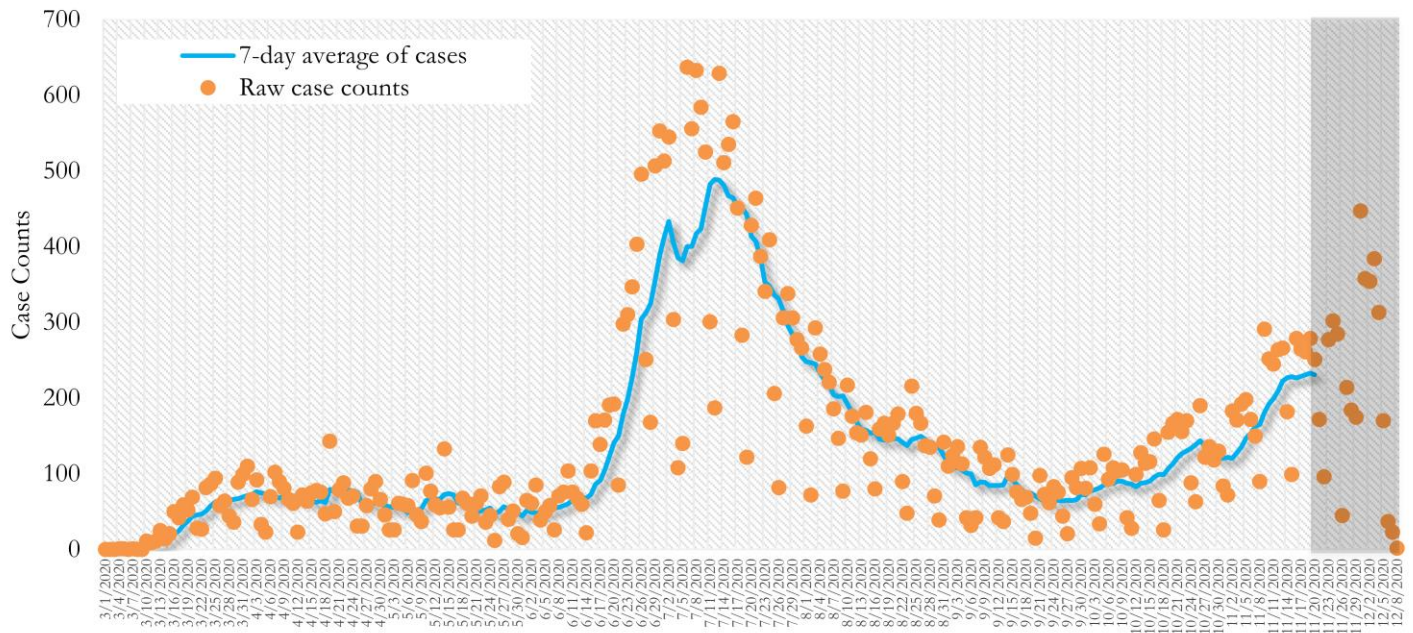
Earlier (March-May 2020) large proportions of reported cases were among persons aged 60 and older. In the most recent two weeks, 20-29 year olds accounted for the highest number of new cases among all age groups, followed by 30-39 year olds.

Fig. 16. Age Distribution of COVID-19 Cases in Fulton County by 14-day periods



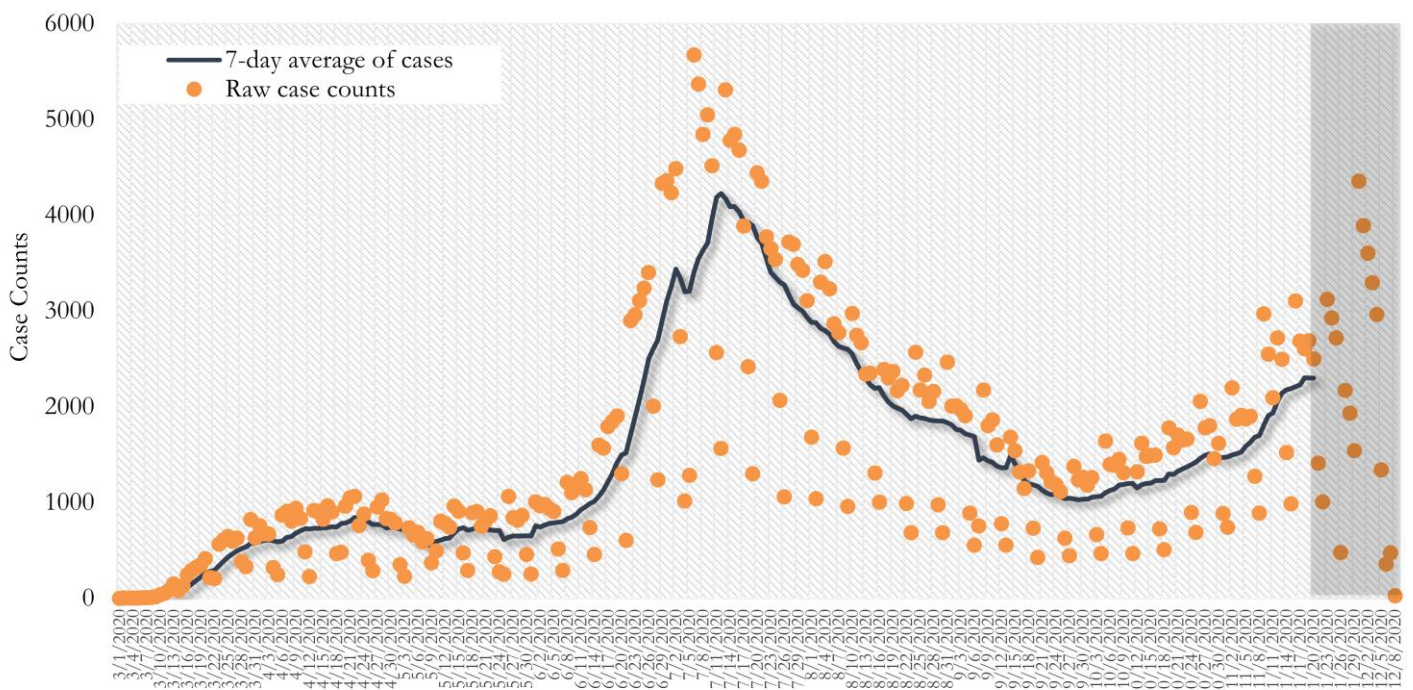
TRENDS IN COVID-19 CASES, HOSPITALIZATIONS AND DEATHS (7-DAY MOVING AVE.)

Fig. 17. New COVID-19 Cases in Fulton County Daily (Averaged over 7 days)



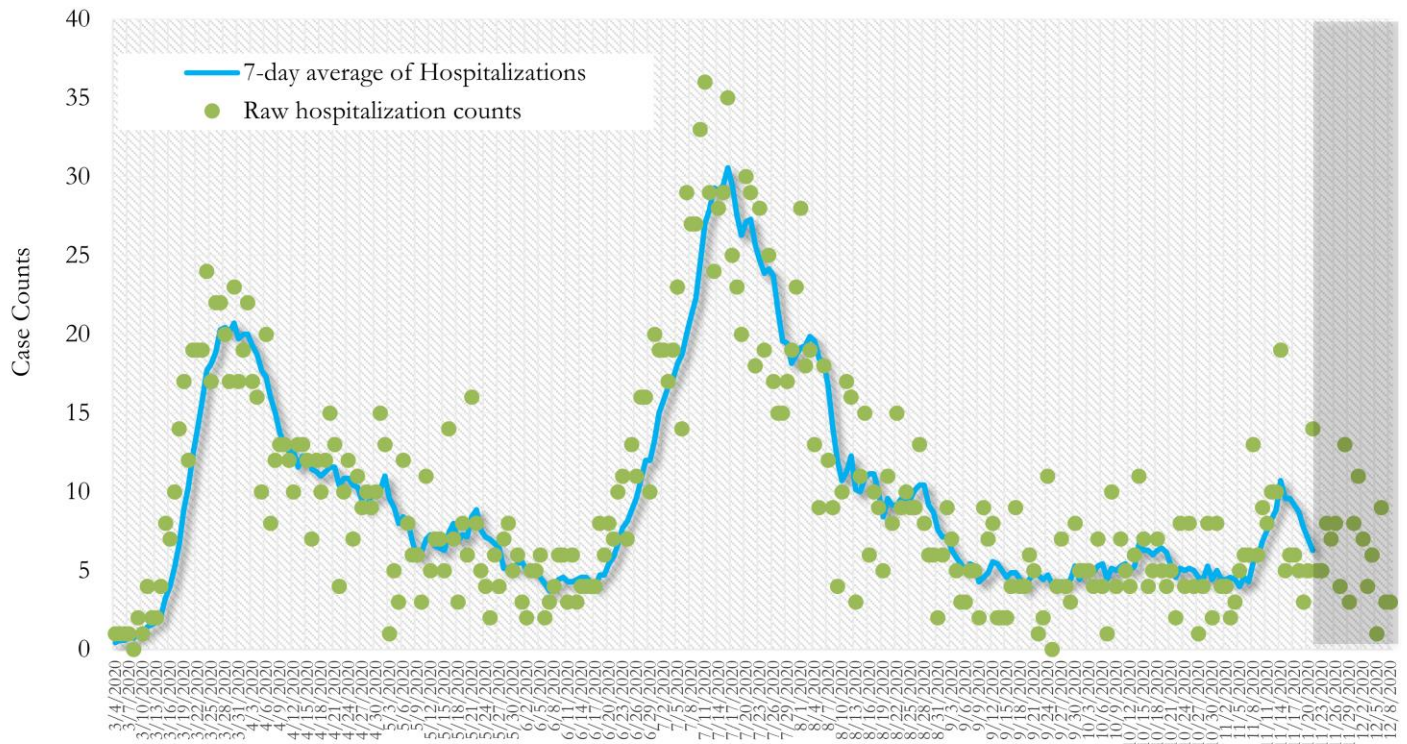
*Date of collection of first positive sample used (report creation date used where sample collection date is missing). Graph above reflects the trend in COVID-19 diagnosis. Due to the high volume of testing in recent weeks, there have been delays in reporting lab results. Thus, the trend is subject to change as more lab results get added to the state surveillance database.

Fig. 18. New COVID-19 Cases in Georgia State Daily (Averaged over 7 days)



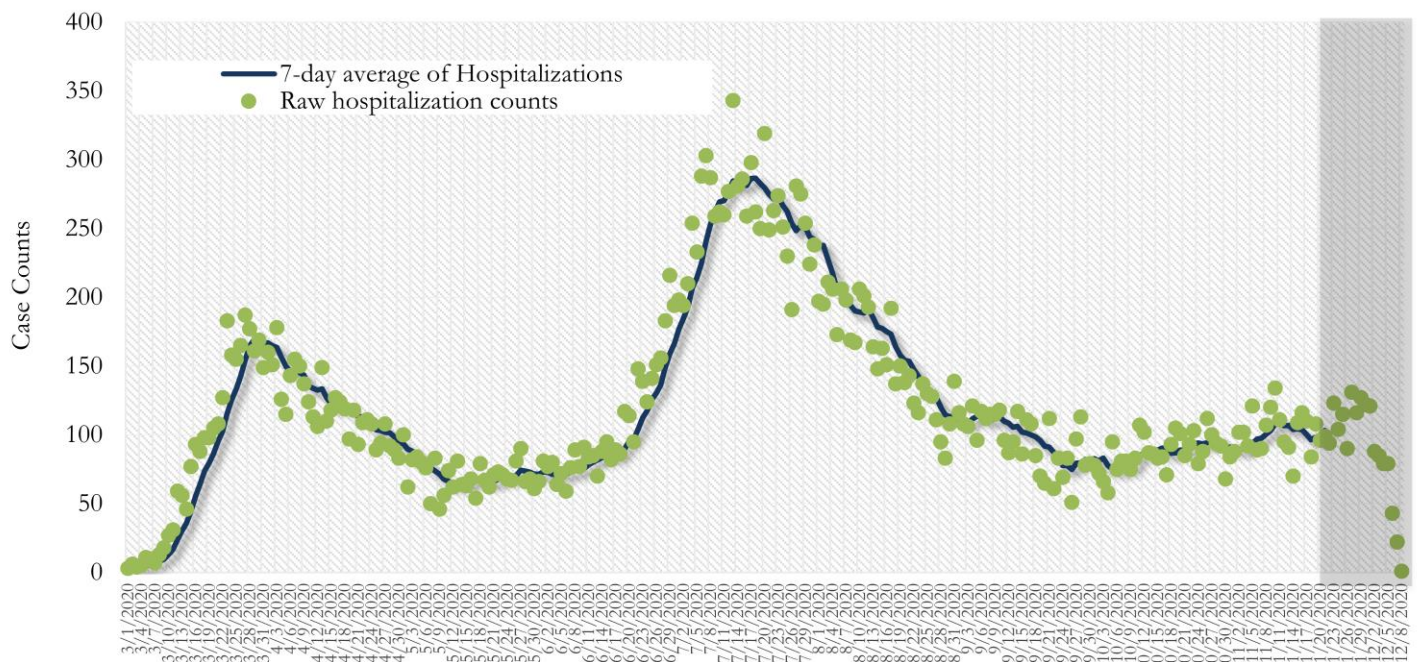
*Date of collection of first positive sample used (report creation date used where sample collection date is missing). Graph above reflects the trend in COVID-19 diagnosis. Due to the high volume of testing in recent weeks, there have been delays in reporting lab results. Thus, the trend is subject to change as more lab results get added to the state surveillance database.

Fig. 19. COVID-19 Hospitalizations in Fulton County Daily (Averaged over 7 days)



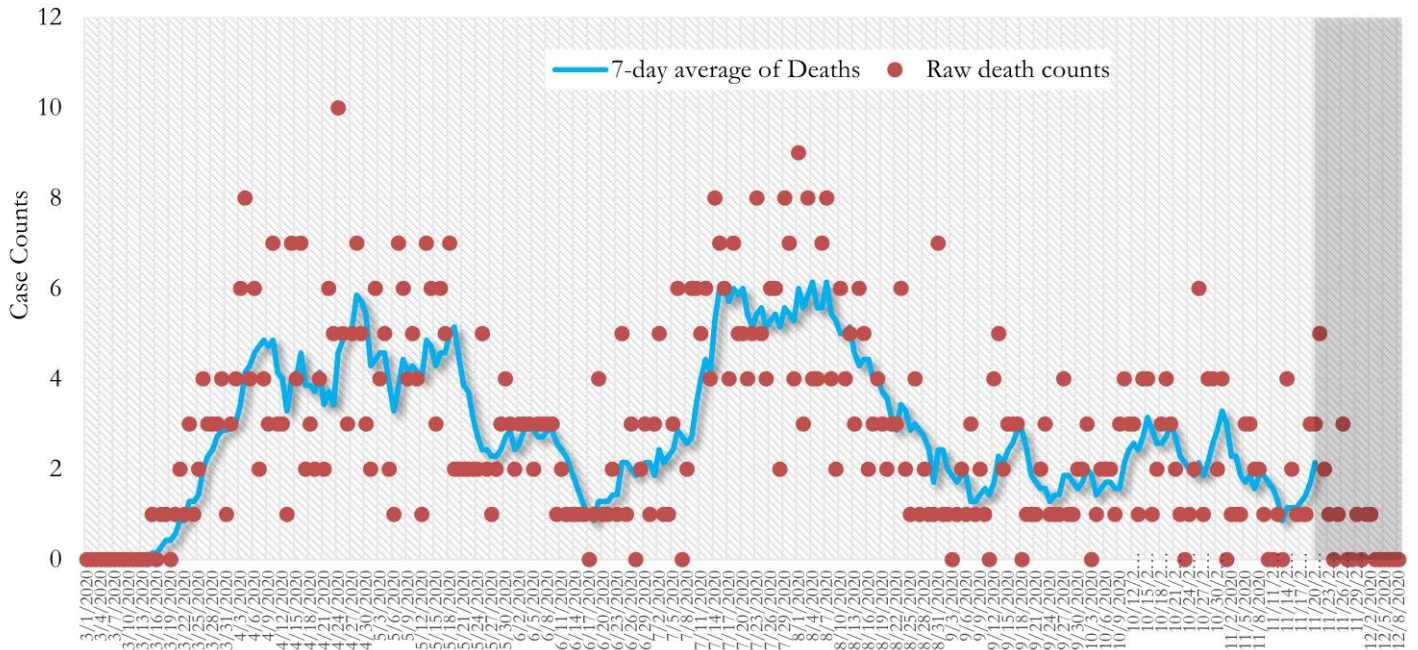
*Reported date of hospital admission used. Graph above reflects the trend in COVID-19 hospitalizations. Due to the high volume of new cases being added daily, there have been delays in reporting hospitalization data. Thus, the trend is likely to change as more hospitalization data is reported in the state surveillance database.

Fig. 20. COVID-19 Hospitalizations in Georgia State Daily (Averaged over 7 days)



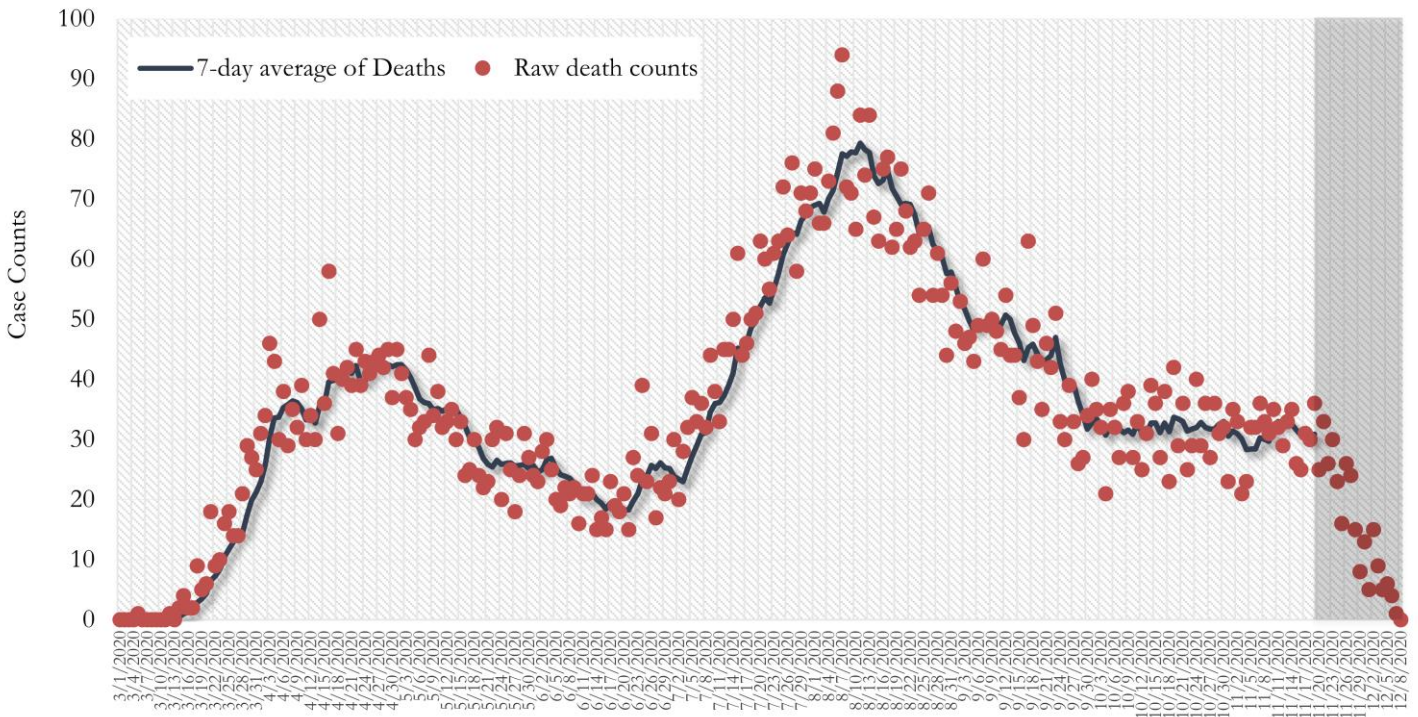
*Reported date of hospital admission used. Graph above reflects the trend in COVID-19 hospitalizations. Due to the high volume of new cases being added daily, there have been delays in reporting hospitalization data. Thus, the trend is likely to change as more hospitalization data is reported in the state surveillance database.

Fig. 21. COVID-19 Deaths in Fulton County Daily (Averaged over 7 days)



* Reported date of death used. Graph above reflects the trend in deaths attributed to COVID-19. The trend is likely to change as more data on deaths among persons with COVID-19 is reported in the state surveillance database.

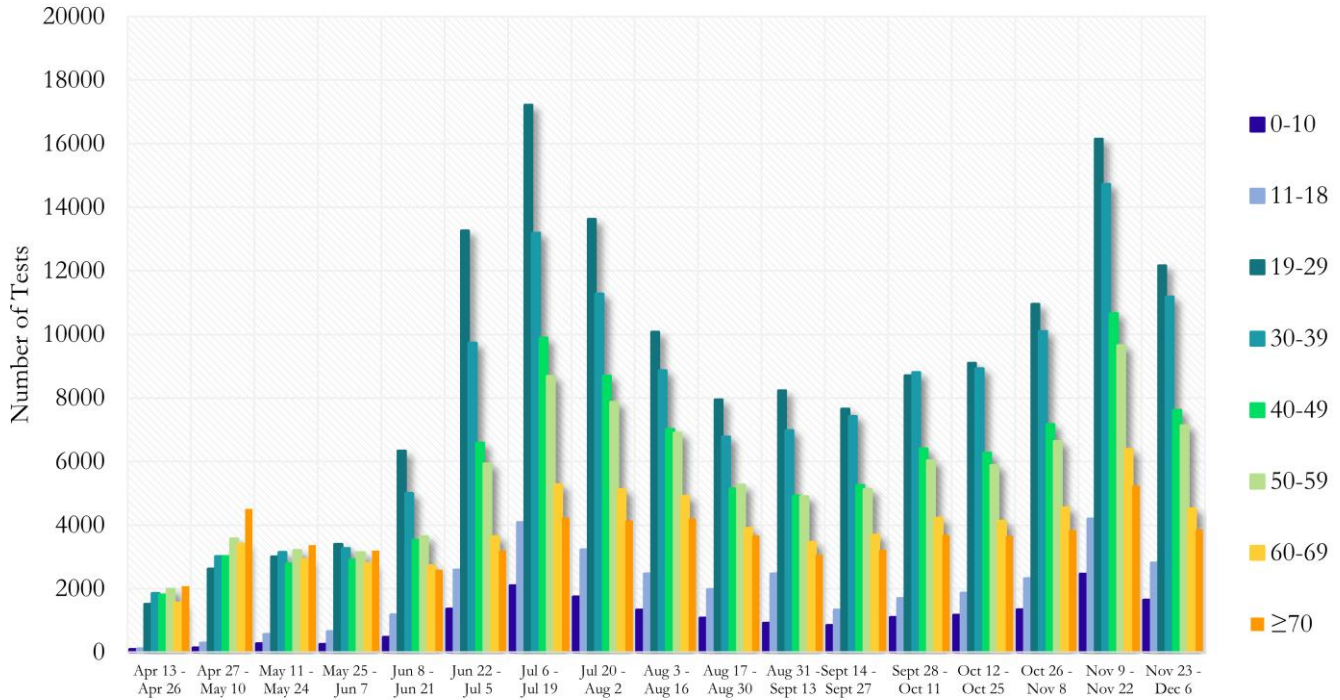
Fig. 22. COVID-19 Deaths in Georgia State Daily (Averaged over 7 days)



* Reported date of death used. Graph above reflects the trend in deaths attributed to COVID-19. The trend is likely to change as more data on deaths among persons with COVID-19 is reported in the state surveillance database.

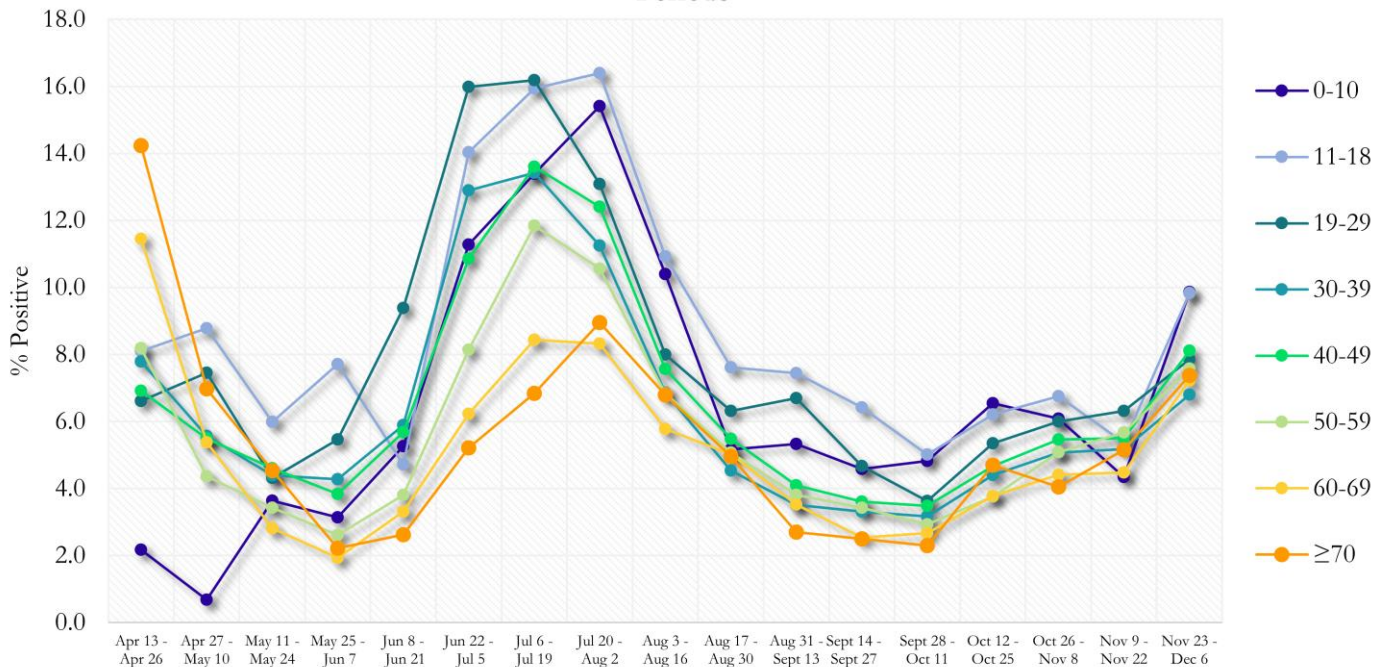
COVID-19 TESTING AND POSITIVITY IN FULTON COUNTY BY AGE AND RACE

Fig. 23. COVID-19 Tests by Age in Fulton County by 14-day Periods



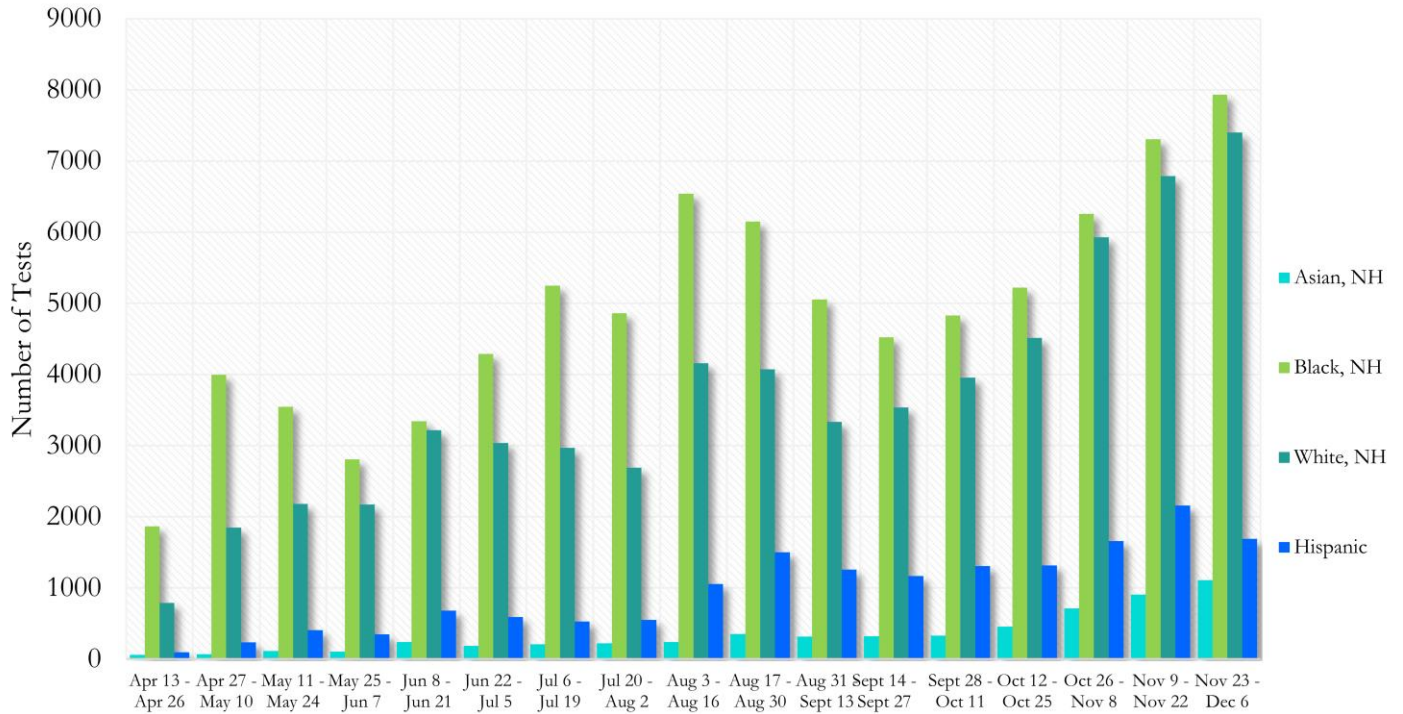
*Data on Polymerase Chain Reaction (PCR) tests only included.

Fig. 24. Percent Positive COVID-19 Tests by Age Group in Fulton County by 14-day Periods



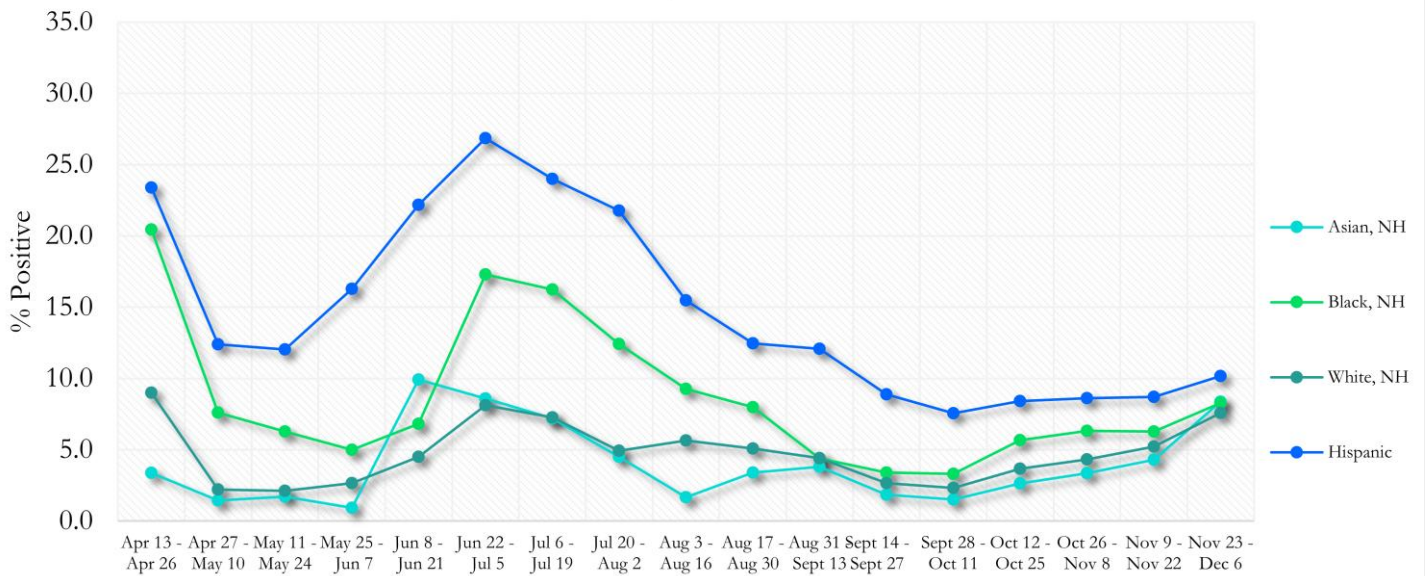
*Data on Polymerase Chain Reaction (PCR) tests only included.

Fig. 25. COVID-19 Tests by Race and Ethnicity in Fulton County by 14-day Periods



*Data on Polymerase Chain Reaction (PCR) tests only included.

Fig. 26. Percent Positive COVID-19 Tests by Race and Ethnicity in Fulton County by 14-day Periods



*Data on Polymerase Chain Reaction (PCR) tests only included.

COVID-19 CASE COUNTS BY ZIP CODE

	Prior (12/4/20)	Current Total (12/8/20)		New Cases (Period: 11/4/20 – 12/1/20) ¹		
	Count	Count	%	Recent 14 d. (Nov 18– Dec 1)	Prior 14 d. (Nov 4– Nov 17)	% change ²
All Fulton	38624	40016	100%	3628	2912	↑ 24.6%
30004	1410	1474	3.68%	191	128	↑ 49.2%
30005	830	873	2.18%	143	66	↑ 116.7%
30009	662	697	1.74%	79	61	↑ 29.5%
30022	1868	1950	0.95%	248	205	↑ 21.0%
30023	<10	<10	<0.1%	<10	0	-
30024	25	32	<0.1%	<10	<10	-
30075	1516	1558	3.89%	129	126	↑ 2.4%
30076	1491	1554	3.88%	138	96	↑ 43.8%
30080	<10	<10	<0.1%	<10	0	-
30097	511	548	1.37%	84	52	↑ 61.5%
30098	-	-	-	0	0	-
30135	<10	<10	<0.1%	0	0	-
30138	<10	<10	<0.1%	0	0	-
30139	-	-	-	0	0	-
30213	1460	1528	3.82%	124	105	↑ 18.1%
30268	238	246	0.61%	17	13	↑ 30.8%
30291	1023	1055	2.64%	84	56	↑ 50.0%
30296	96	104	0.26%	19	12	↑ 58.3%
30301	13	14	<0.1%	<10	<10	-
30303	455	462	1.15%	15	27	↓ 44.4%
30305	1192	1254	3.13%	160	97	↑ 64.9%
30306	526	537	1.34%	68	54	↑ 25.9%
30307	259	269	0.67%	25	14	↑ 78.6%
30308	856	878	2.19%	86	72	↑ 19.4%
30309	1229	1267	3.17%	128	104	↑ 23.1%
30310	952	981	2.45%	58	53	↑ 9.4%
30311	1011	1048	2.62%	69	54	↑ 27.8%
30312	1119	1162	2.90%	106	94	↑ 12.8%
30313	378	380	0.95%	22	26	↓ 15.4%
30314	688	718	1.79%	43	27	↑ 59.3%
30315	1170	1203	3.01%	104	91	↑ 14.3%
30316	492	508	1.27%	38	30	↑ 26.7%
30318	2313	2377	5.94%	175	173	↑ 1.2%
30319	215	222	0.55%	26	15	↑ 73.3%
30321	12	13	<0.1%	<10	<10	-
30324	1252	1301	3.25%	119	90	↑ 32.2%
30326	401	412	1.03%	53	43	↑ 23.3%
30327	879	914	2.28%	80	95	↓ 15.8%
30328	1282	1340	3.35%	155	136	↑ 14.0%
30331	2183	2237	5.59%	145	93	↑ 55.9%
30334	13	13	<0.1%	0	0	-
30336	110	113	0.28%	<10	<10	-
30337	446	454	1.13%	27	27	-
30338	104	106	0.26%	<10	<10	-
30339	269	278	0.69%	10	<10	↑ 11.1%
30340	32	33	<0.1%	0	<10	↓ 100.0%
30341	33	34	<0.1%	<10	<10	-
30342	1607	1651	4.13%	135	104	↑ 29.8%
30344	1196	1235	3.09%	96	81	↑ 18.5%
30345	25	25	<0.1%	0	0	-

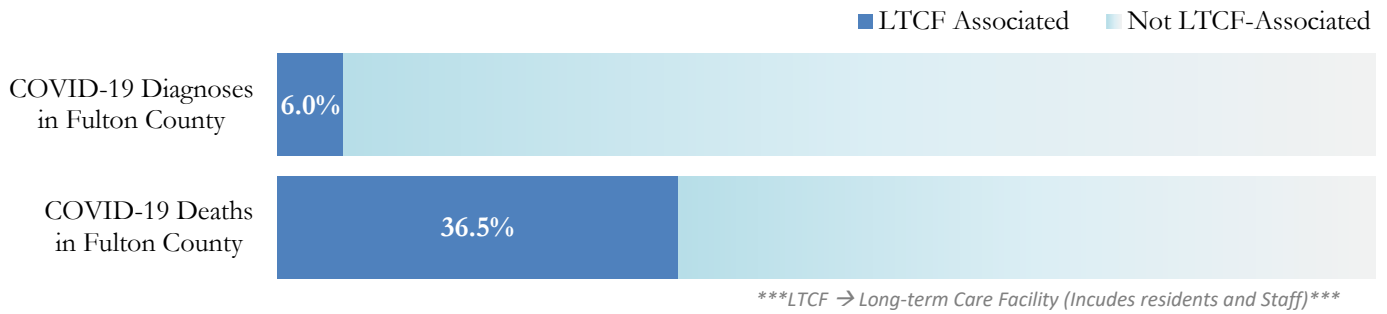
30349	2327	2401	6.00%	149	150	↓ 0.7%
30350	972	1026	2.56%	147	110	↑ 33.6%
30354	569	587	1.47%	50	33	↑ 51.5%
30358	<10	<10	<0.1%	0	0	-
30363	106	108	0.27%	14	11	↑ 27.3%
30374	35	35	<0.1%	<10	<10	-
30606	<10	<10	<0.1%	0	0	-
31131	<10	<10	<0.1%	<10	0	-
31150	<10	<10	<0.1%	0	0	-
Unknown	2134	770	1.92%	56	56	-

¹**New cases:** Cases diagnosed in most recent 28 days (based on reported dates of positive sample collection). To allow for lag in reporting results of new diagnoses from samples collected in the most recent week, data used for incident diagnoses analyses were moved back by one week. ²**Percent change:** These reflect the percentage increase or decrease of new diagnoses between the 14 days preceding the past 7 days and the 14 days preceding that. Changes in ZIP codes with less than 10 cases in both 2 week intervals are not reported**Data cleaning (either during case interviews or address geo-coding) may lead to reassignment of few cases from one territory to another based on their corrected addresses. These may appear as “decreases” when compared to the previous day’s count. These do not reflect errors in the data collection or analysis process but only reflect the minor day-to-day fluctuations in case counts that arise in an evolving public health database like COVID’s. **Note:** Sharp increases in territorial COVID case counts often reflect new cases diagnosed at long term care facilities located in those territories during facility-wide /mass screening events **All data reported are preliminary and subject to change.**

COVID-19 IN LONG-TERM CARE FACILITIES IN FULTON COUNTY

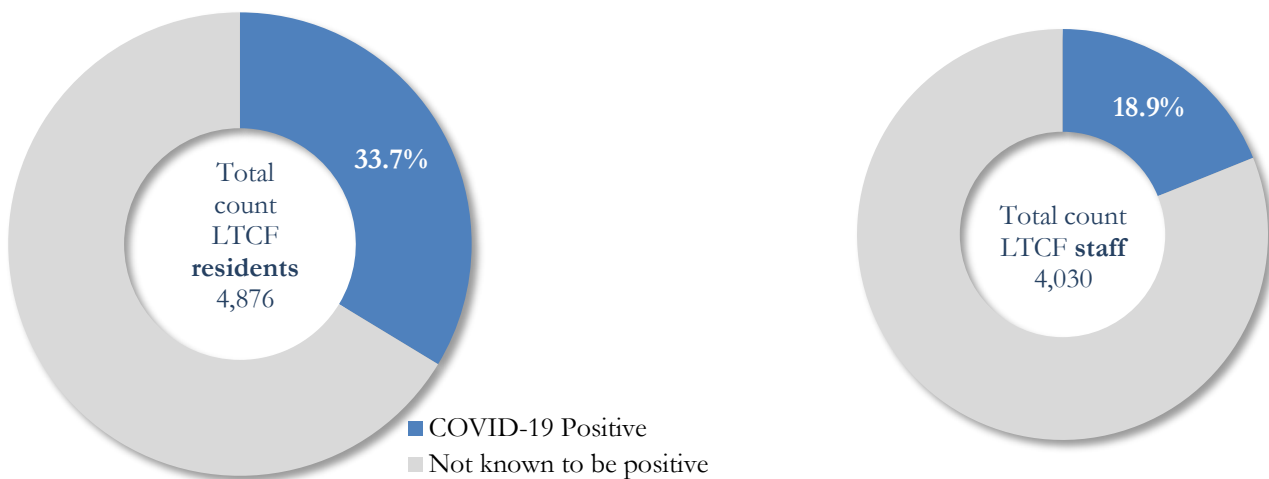
Older persons (aged 65 years and older) and persons who live in nursing homes or other long-term care facilities seem to be at higher risk for developing more serious complications from COVID-19. Extra precautions are recommended for individuals within this risk groups – Centers for Disease Control and Prevention (CDC 2020) <https://www.cdc.gov/coronavirus/2019-ncov/need-extra-precautions/people-at-higher-risk.html>

Fig. 27. COVID-19 Diagnoses and Deaths in Fulton County Associated with Long-Term Care Facilities



COVID-19 POSITIVITY:

Fig. 28. COVID-19 Positivity at 64 reporting Long-Term Care Facilities (LTCF) in Fulton County



COVID-19 Cases, Hospitalizations, and Deaths among 64 reporting Long-Term Care Facilities in Fulton County

	LTCF Residents (n=4,876)			LTCF Staff (n=4,030)		
	Cases	Hospitalizations	Deaths	Cases	Hospitalizations	Deaths
Average (count per fac.) ¹	26	5	4	12	1	<0.1
Median (count per fac.) ¹	10	2	1	9	0	0
Lowest counts	0	0	0	0	0	0
Highest counts	139	48	30	70	8	2
Total Count	1642 (33.7%) ^a	330 (20.1%) ^b	246 (15.0%) ^b	762 (18.9%) ^a	33 (4.3%) ^b	5 (<1.0%) ^b

^a Percentage shown reflects proportion of total residents/staff tested who were positive (i.e. COVID-19 Positivity). | ^b Percentages shown are proportions of persons residents/staff diagnosed with COVID-19 who were hospitalized or died after diagnoses.