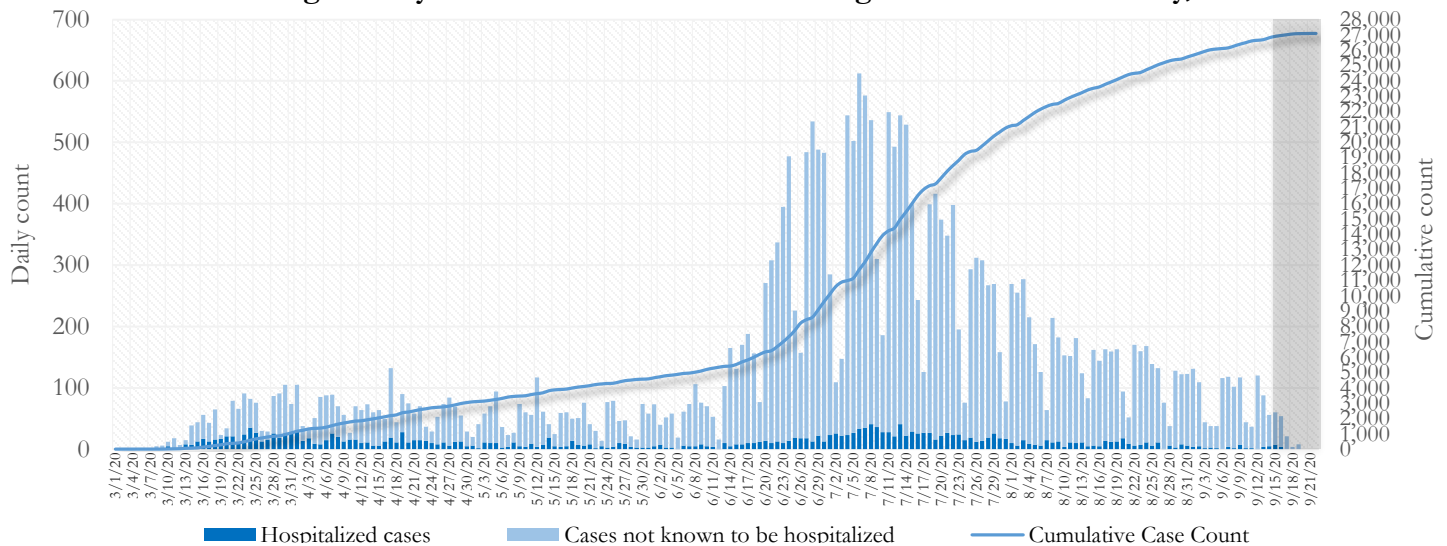


SUMMARY

- As of September 22, 2020, Fulton County has recorded **27,097 cases of the 2019 novel coronavirus (COVID-19)** and **519 confirmed COVID-19 deaths**. 46 deaths are currently being reviewed by GaDPH to confirm cause of death.
- Of **1,345 new diagnoses** made between September 1 and September 15, the central portion of the county (Atlanta metro) accounted for 38% while the northern and southern parts accounted for 42% and 14% respectively.
- By city, new COVID-19 case rates range from 57.6 per 100,000 persons (College Park) to 192.0 per 100,000 persons (Roswell). [**Fulton County Diagnoses Rates (per 100,000 persons): Cumulative – 2546.9; Incidence –126.4**]. See map showing incident case rate by ZIP code on Pg.17.
- Among all persons diagnosed with COVID-19 in Fulton County since May 1, **6.6% required hospitalization and 1.8% died**.
- Of all testing done in Fulton County between August 31 and September 13, the **percent positivity rate was 5%**.

Fig 1. Daily and Cumulative COVID-19 diagnoses in Fulton County, GA



*Counts shown reflect the number of confirmed cases as of 8:00 am on 9/22/20 using the date of first positive sample collection. Where date of sample collection was not available or missing, the date of report creation in GA SENDSS was used instead. **Note:** Delays in data reporting may cause changes in data counts, particularly in the shaded portion. Data throughout this report is preliminary and subject to ongoing data cleaning processes, and thus is subject to change.


DISTRIBUTION OF COVID-19 DIAGNOSES BY REGION

New cases: 38% of the new COVID-19 cases diagnosed in the past 2 weeks occurred in Atlanta while 42% and 14% occurred in the Northern and Southern regions of the county respectively.

Fulton Region	% Cumulative count	% New cases*
Atlanta	42.3%	38.2%
North ¹	27.4%	41.8%
South ²	19.8%	13.6%
Unincorporated/Unknown	10.5%	6.4%

¹Includes all Fulton County cities north of Atlanta metro (Alpharetta, Milton, Johns Creek, Roswell, Sandy Springs, Mountain Park) | ²Includes all cities south of Atlanta (College Park, Chattahoochee Hills, East Point, Hapeville, Palmetto, South Fulton, Fairburn, and Union City) ***New cases:** Cases diagnosed in the past 2 weeks only (between 9/1/20 – 9/15/20).

In the past two weeks (9/1-9/15), there were fewer new cases of COVID-19 in Fulton County than the previous two weeks (8/18-8/31).



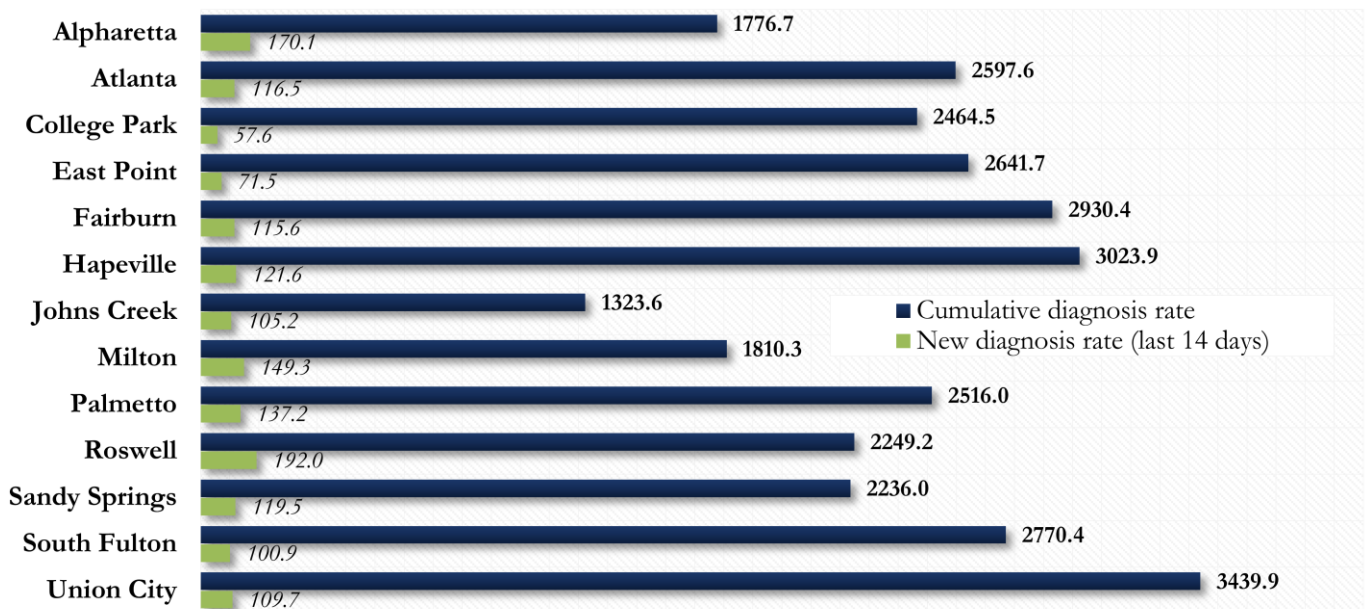
*Delayed a week to account for testing results turnaround time.

COVID-19 CASE COUNTS AND RATES BY CITY

	Prior (9/18/20)	Current Total (9/22/20)			New Cases (Period: 8/18/20 – 9/15/20) ¹			
	Count	Count	%	Cum. Rate ²	1 st 14 d. (8/18–8/31)	Last 14 d. (9/1–9/15)	% change ³	Rate ⁴ (Last 14 d).
Alpharetta	1125	1149	4.2%	1776.7	150	110	↓ 26.7%	170.1
Atlanta	11260	11460	42.3%	2597.6	630	514	↓ 18.4%	116.5
Chattahoochee Hills	0	0	0.0%	-	0	0	-	-
College Park	334	342	1.3%	2464.5	18	<10	↓ 55.6%	57.6
East Point	915	924	3.4%	2641.7	57	25	↓ 56.1%	71.5
Fairburn	425	431	1.6%	2930.4	23	17	↓ 26.1%	115.6
Hapeville	198	199	0.7%	3023.9	10	<10	↓ 20.0%	121.6
Johns Creek	1089	1107	4.1%	1323.6	125	88	↓ 29.6%	105.2
Milton	673	691	2.6%	1810.3	95	57	↓ 40.0%	149.3
Mountain Park	6	6	0.0%	960.0	0	0	-	-
Palmetto	109	110	0.4%	2516.0	<10	<10	-	137.2
Roswell	2058	2120	7.8%	2249.2	213	181	↓ 15.0%	192.0
Sandy Springs	2319	2357	8.7%	2236.0	148	126	↓ 14.9%	119.5
South Fulton	2597	2635	9.7%	2770.4	121	96	↓ 20.7%	100.9
Union City	713	721	2.7%	3439.9	31	23	↓ 25.8%	109.7
Unknown	3276	2845	10.5%	-	154	86	-	-

¹**New cases:** Cases diagnosed in most recent 28 days (based on reported dates of positive sample collection). To allow for lag in reporting results of new diagnoses from samples collected in the most recent week, data used for incident diagnoses analyses were moved back by one week. ²**Cumulative diagnosis rate:** Population estimates from US Census Bureau used to calculate cumulative diagnoses rate. All rates shown are per 100,000 persons. ³**% change:** These reflect the percentage increase or decrease in new diagnoses between the 14 days preceding the most recent 7 days and the 14 days preceding that. Changes in cities with less than 10 cases in both 2 week intervals are not reported. ⁴**(Incidence) Rate:** Rate of new diagnoses in the last 14 day period preceding the immediate past week. **Data cleaning (either during case interviews or address geo-coding) may lead to reassignment of few cases from one territory to another based on their corrected addresses. These may appear as “decreases” when compared to the previous day’s count. These do not reflect errors in the data collection or analysis process but only reflect the minor day-to-day fluctuations in case counts that arise in an evolving public health database like COVID’s. **Note: All data reported are preliminary and subject to change.**

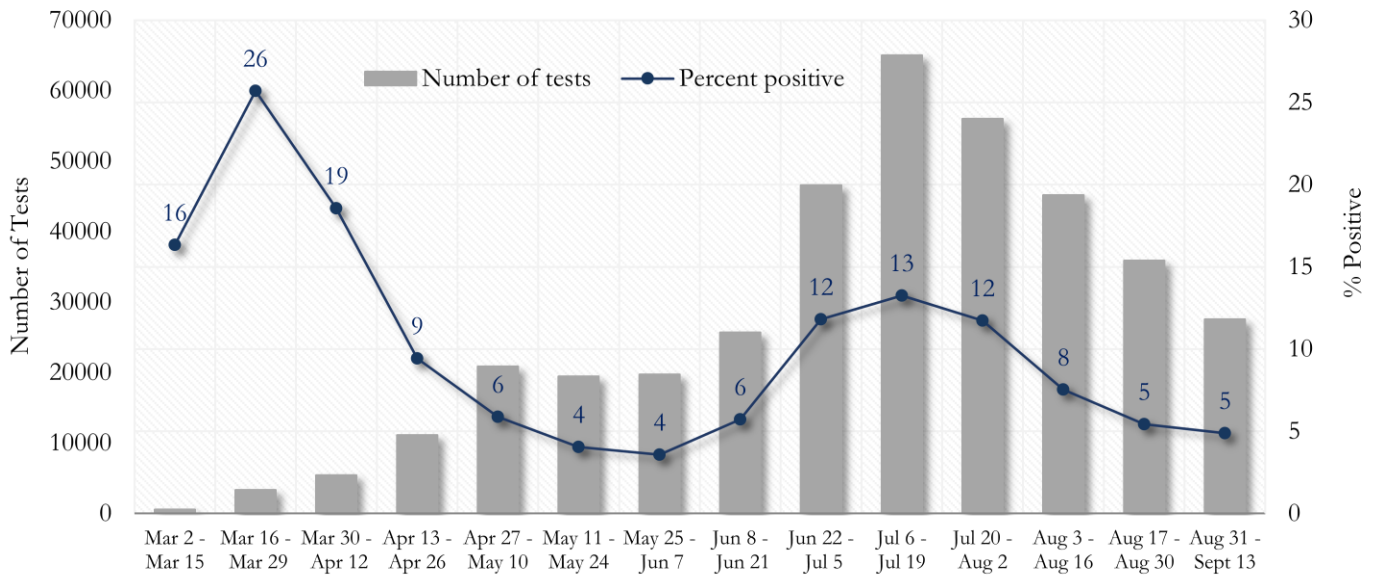
Fig. 2. Incident & Cumulative Diagnoses Rates for COVID-19 by City



*Rates shown are per 100,000 persons | **Note:** Mass testing in specific locations (e.g. long term care facilities) may cause sharp increases in the cumulative rate of COVID-19 diagnosis in those territories. All data shown are preliminary and are subject to change as testing results get updated.

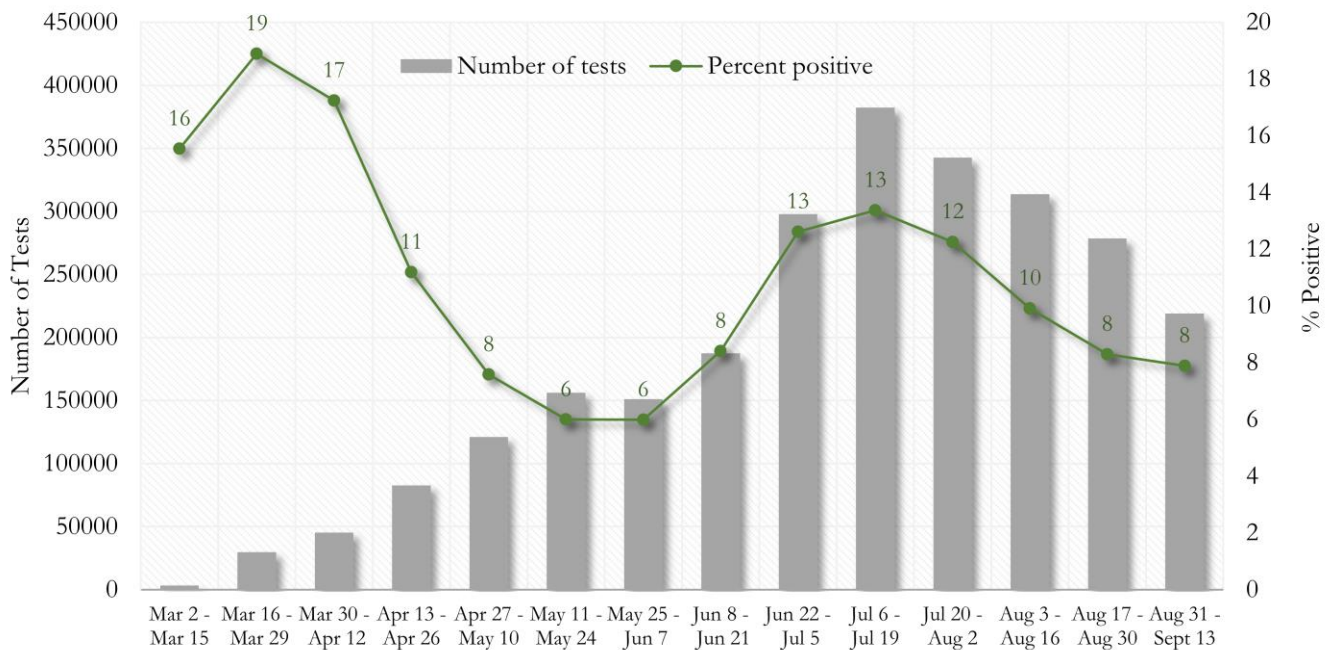
COVID-19 TESTING AND POSITIVITY IN FULTON COUNTY AND GEORGIA

Fig. 3. Trends in Positive COVID-19 Tests in Fulton County by 14-day Periods



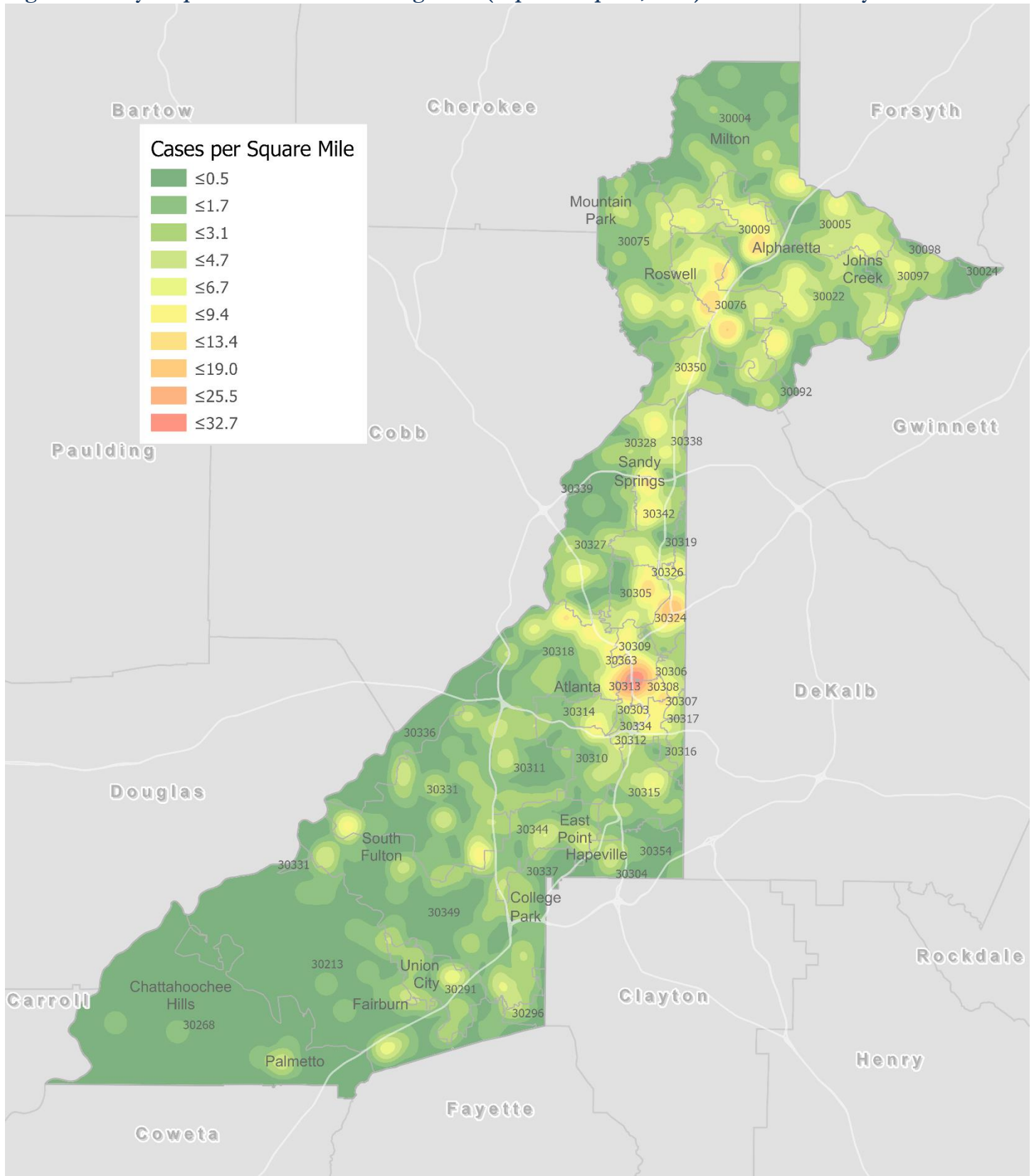
*Data on Polymerase Chain Reaction (PCR) tests only included.

Fig. 4. Trends in Positive COVID-19 Tests in Georgia by 14-day Periods



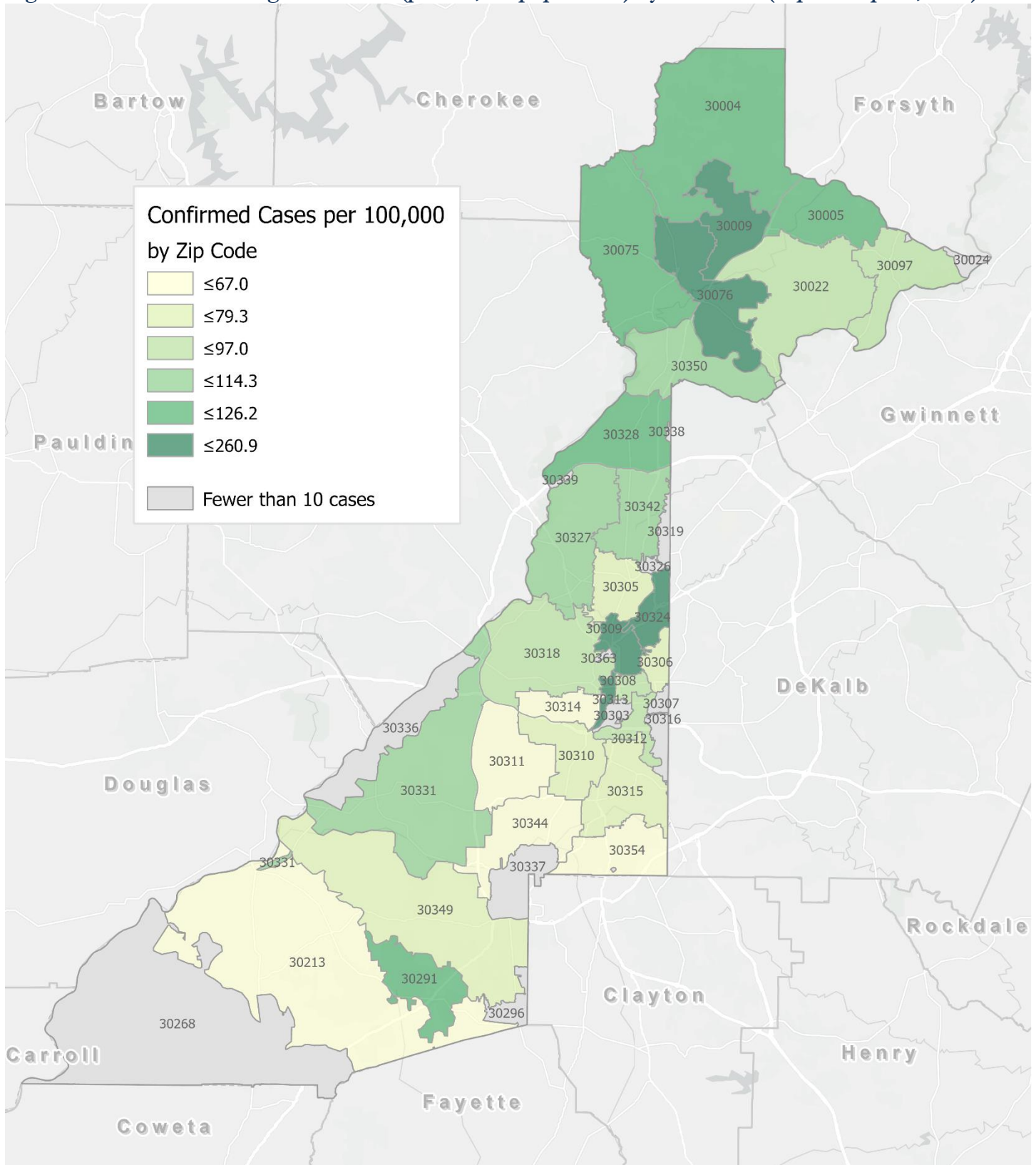
*Data on Polymerase Chain Reaction (PCR) tests only included.

Fig. 5. Density Map – New COVID 19 Diagnoses (Sept 1 – Sept 15, 2020) in Fulton County



New COVID-19 cases: Cases diagnosed in most recent 14 days (based on reported dates of positive sample collection). To allow for lag in reporting results of positive cases from samples collected in the immediate past 7 days, data used for incident diagnoses analyses are moved back by one week. Map reflects new COVID-19 cases diagnosed between Sept 1st and Sept 15th, 2020 across Fulton County.

Fig. 6. New COVID-19 Diagnoses Rates (per 100,000 population) by ZIP Code (Sept 1– Sept 15, 2020)



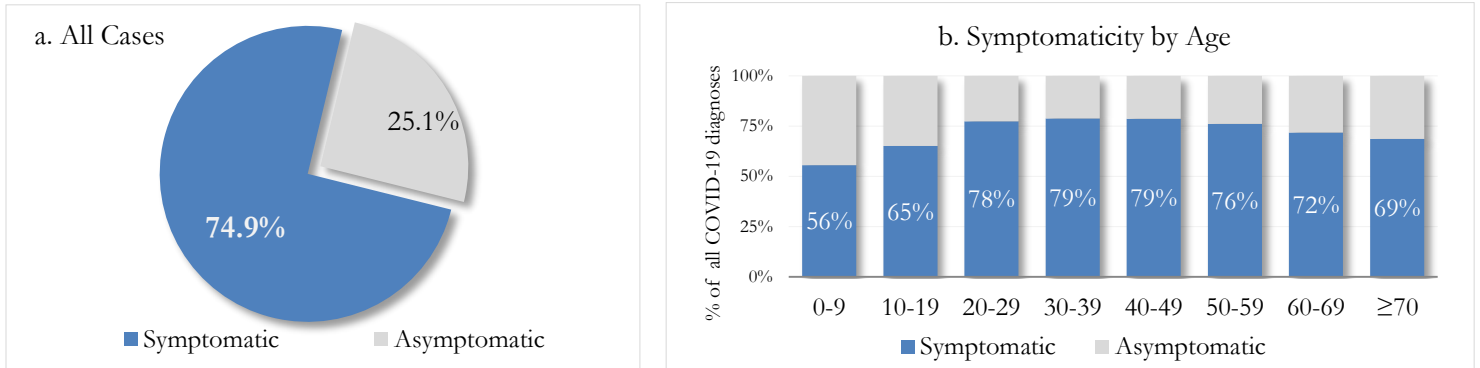
*Rates shown are per 100,000 populations.

New COVID-19 cases: Cases diagnosed in most recent 14 days (based on reported dates of positive sample collection). To allow for lag in reporting results of positive cases from samples collected in the immediate past 7 days, data used for incident diagnoses analyses are moved back by one week. Data used excludes outbreak-related cases at long-term care facilities and map shown reflects only the new non-LTCF cases diagnosed between the dates shown in map title. See page 17 for zip code break down table.

REPORTING SYMPTOMS AMONG PERSONS WITH COVID-19 IN FULTON

People with COVID-19 have reported a wide range of symptoms ranging from mild symptoms to severe illness. Symptoms may appear 2-14 days after exposure to the virus. Symptoms reported include: cough, shortness of breath/difficulty breathing, fever, chills, repeated shaking with chills, muscle pain, headache, sore throat, new loss of taste or smell – Centers for Disease Control and Prevention (CDC)
<https://www.cdc.gov/coronavirus/2019-ncov/symptoms-testing/symptoms.html>

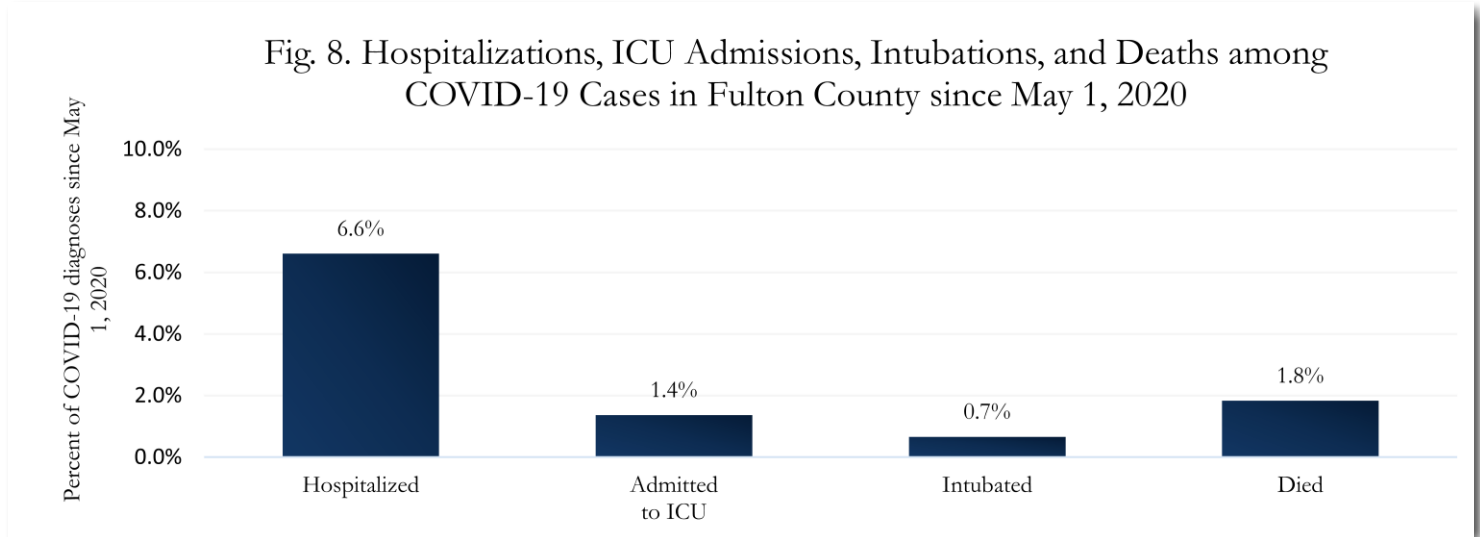
Fig. 7a & b. Total Proportion Reporting Symptoms in Fulton County



COVID-19 cases who have been case interviewed or had medical charts reviewed as of 9/22/20 only. n = 16,930

COVID-19 HOSPITALIZATIONS, ICU ADMISSIONS AND DEATHS IN FULTON

Fig. 8. Hospitalizations, ICU Admissions, Intubations, and Deaths among COVID-19 Cases in Fulton County since May 1, 2020



DEMOGRAPHIC DISTRIBUTIONS – COVID 19 CASES AND DEATHS

A. Distribution of COVID-19 cases by gender, age, and race in Fulton County by Fulton Region

	North Fulton Cities ¹ Count (%)	Atlanta Count (%)	South Fulton Cities ² Count (%)	Unknown City Count (%)	All Fulton Count (%)
Total COVID-19 cases	7430	11460	5362	2845	27097
Gender: Female	3774 (50.8%)	5595 (48.8%)	2968 (55.4%)	1431 (50.3%)	13768 (50.8%)
Male	3483 (46.9%)	5414 (47.2%)	2237 (41.7%)	1319 (46.4%)	12453 (46.0%)
Unknown*	173 (2.3%)	451 (3.9%)	157 (2.9%)	95 (3.3%)	876 (3.2%)
Age: 0-9	249 (3.4%)	203 (1.8%)	162 (3.0%)	74 (2.6%)	688 (2.5%)
10-19	1134 (15.3%)	775 (6.8%)	372 (6.9%)	201 (7.1%)	2482 (9.2%)
20-29	1638 (22.0%)	3351 (29.2%)	1053 (19.6%)	735 (25.8%)	6777 (25.0%)
30-39	1142 (15.4%)	2482 (21.7%)	1117 (20.8%)	589 (20.7%)	5330 (19.7%)
40-49	1170 (15.7%)	1509 (13.2%)	992 (18.5%)	449 (15.8%)	4120 (15.2%)
50-59	1047 (14.1%)	1258 (11.0%)	736 (13.7%)	358 (12.6%)	3399 (12.5%)
60-69	544 (7.3%)	852 (7.4%)	496 (9.3%)	224 (7.9%)	2116 (7.8%)
≥70	501 (6.7%)	989 (8.6%)	431 (8.0%)	206 (7.2%)	2127 (7.8%)
Unknown*	<10	41 (0.4%)	<10	<10	58 (0.2%)
Race: Asian, NH	255 (3.4%)	180 (1.6%)	16 (0.3%)	56 (2.0%)	507 (1.9%)
Black, NH	737 (9.9%)	5071 (44.2%)	3531 (65.9%)	858 (30.2%)	10197 (37.6%)
White, NH	2671 (35.9%)	2311 (20.2%)	212 (4.0%)	648 (22.8%)	5842 (21.6%)
Hispanic	1433 (19.3%)	700 (6.1%)	430 (8.0%)	320 (11.2%)	2883 (10.6%)
Other, NH	290 (3.9%)	369 (3.2%)	137 (2.6%)	107 (3.8%)	903 (3.3%)
Unknown*	2044 (27.5%)	2829 (24.7%)	1036 (19.3%)	856 (30.1%)	6765 (25.0%)

*Unknown included cases not yet interviewed.

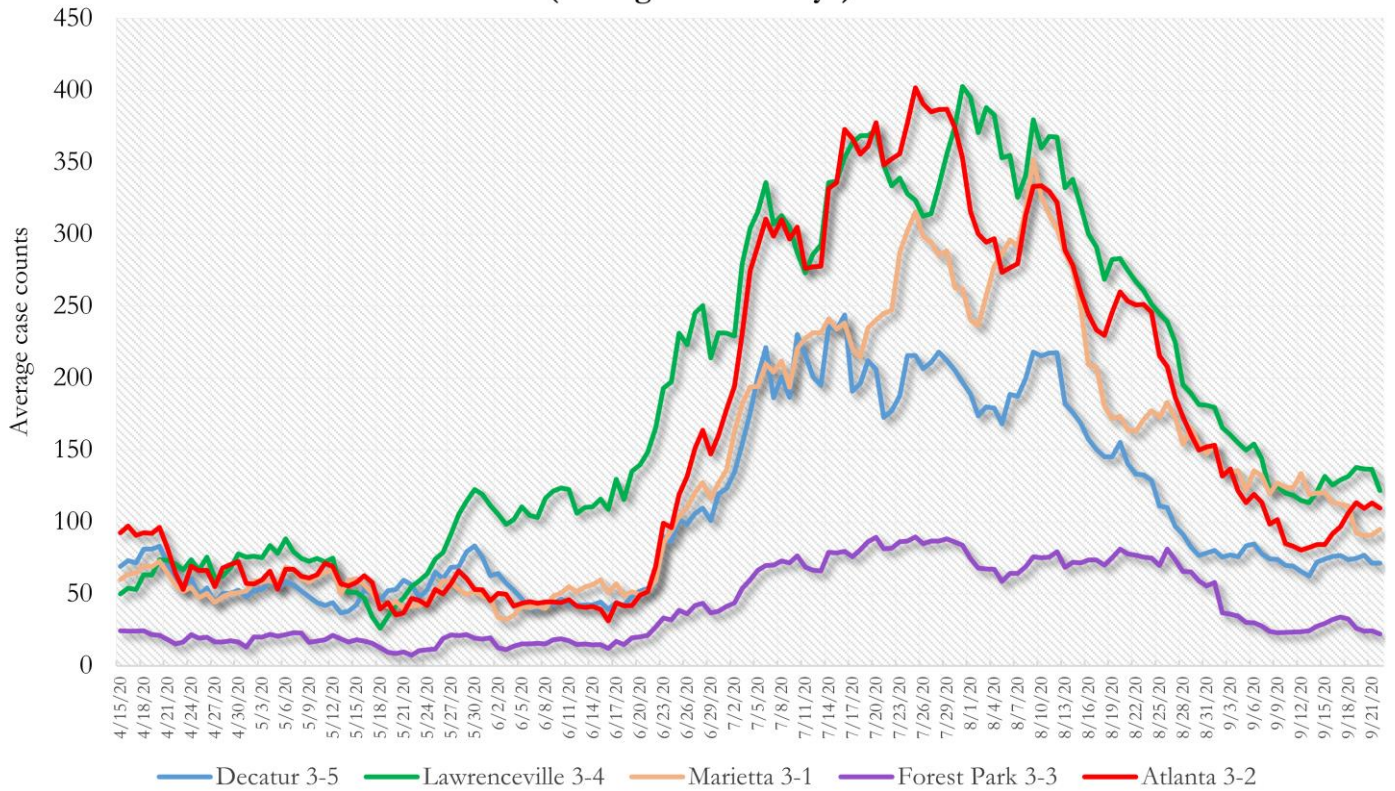
B. Distribution of COVID-19 deaths by gender, age, and race in Fulton County by Fulton Region

	North Fulton Cities ¹ Count (%)	Atlanta Count (%)	South Fulton Cities ² Count (%)	Unknown City Count (%)	All Fulton Count (%)
Total COVID-19 deaths	116	266	140	43	565
Gender: Female	53 (45.7%)	116 (43.6%)	70 (50.0%)	25 (58.1%)	264 (46.7%)
Male	63 (54.3%)	150 (56.4%)	70 (50.0%)	18 (41.9%)	301 (53.3%)
Unknown	0	0	0	0	0
Age: ≤ 29	0	<10	<10	0	<10
30-39	<10	<10	<10	<10	13 (2.3%)
40-49	<10	<10	10 (7.1%)	<10	26 (4.6%)
50-59	<10	24 (9.0%)	18 (12.9%)	<10	48 (8.5%)
60-69	14 (12.1%)	50 (18.8%)	32 (22.9%)	<10	100 (17.7%)
≥70	90 (77.6%)	173 (65.0%)	76 (54.3%)	34 (79.1%)	373 (66.0%)
Unknown	0	<10	0	0	0
Race: Asian, NH	<10	<10	<10	<10	10 (1.8%)
Black, NH	20 (17.2%)	229 (86.1%)	120 (85.7%)	22 (51.2%)	391 (69.2%)
White, NH	80 (69.0%)	29 (10.9%)	12 (8.6%)	17 (39.5%)	138 (24.4%)
Hispanic	10 (8.6%)	<10	<10	<10	20 (3.5%)
Other, NH	0	<10	<10	0	<10
Unknown	<10	<10	0	<10	<10

¹Includes all Fulton County cities north of Atlanta metro (Alpharetta, Milton, Johns Creek, Roswell, Sandy Springs, Mountain Park) ²Includes all cities south of Atlanta (College Park, Chattahoochee Hills, East Point, Hapeville, Palmetto, South Fulton, Fairburn, Union City). **Note:** All data reported are preliminary and subject to change. This table includes data on all presumed COVID-19 deaths and is subject to change as GaDPH completes cause of death confirmation processes.

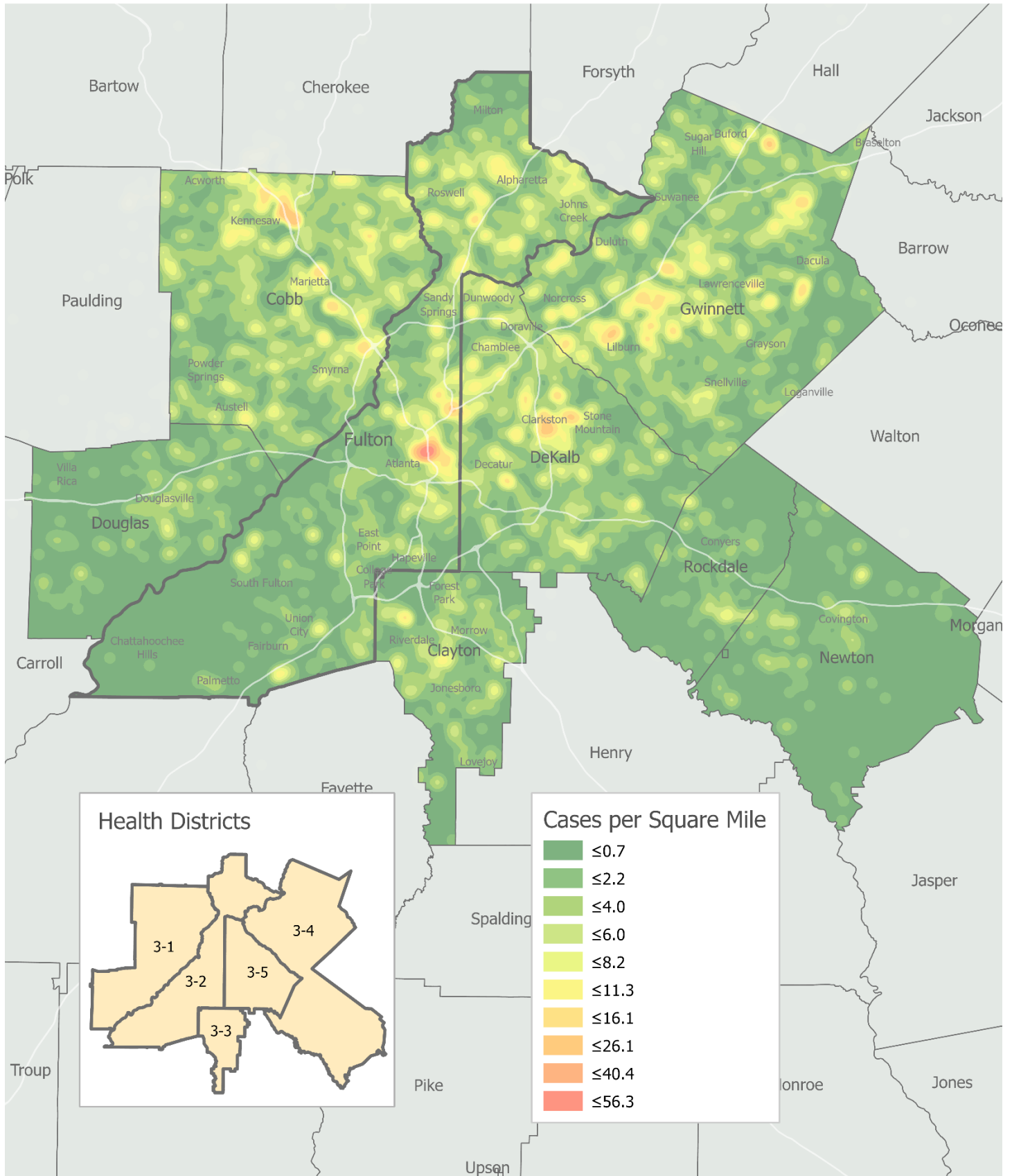
COVID-19 CASE TRENDS IN FULTON AND SURROUNDING DISTRICTS

**Fig. 9. Daily Case Counts for Atlanta Metro Districts
(Averaged over 7 days)**



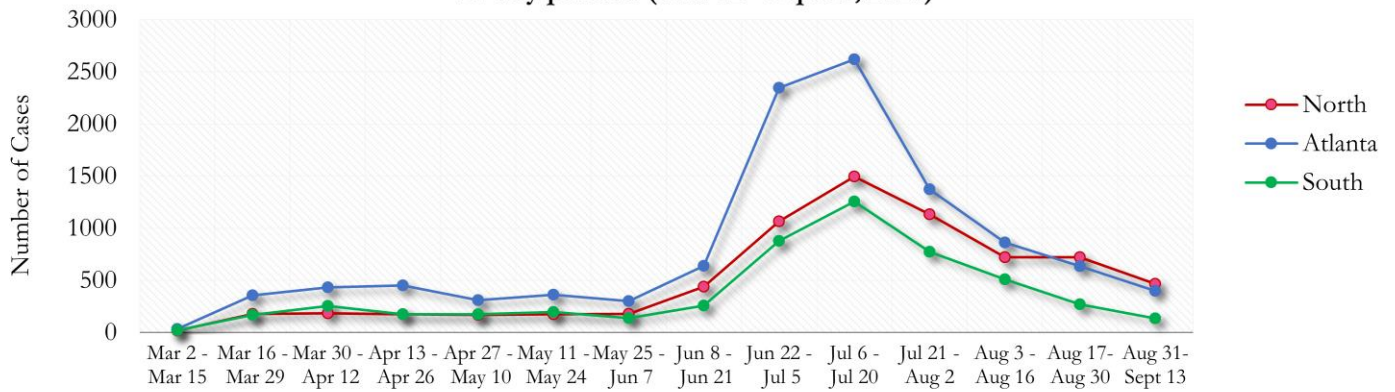
*Graph shows the average number of cases calculated from the daily cumulative case counts in the metro Atlanta districts. Increases in daily cumulative case counts may include cases diagnosed earlier during the pandemic but were only recently reported to the state as cases diagnosed belonging to these districts.

Fig. 10. COVID-19 Cases in Fulton County and Surrounding Districts (Sept 1 – Sept 15, 2020)



TRENDS IN COVID-19 CASES AMONG DEMOGRAPHIC GROUPS (14 DAY PERIODS)

Fig. 11. Trends in Geographic distribution of COVID -19 Diagnoses in Fulton County by 14-day periods (Mar 02 - Sept 13, 2020)



The Northern region now accounts for a majority of cases in Fulton County.

*North - Includes all Fulton cities north of Atlanta (Alpharetta, Milton, Johns Creek, Roswell, Sandy Springs, Mountain Park)

*South - Includes all Fulton cities south of Atlanta (College Park, Chattahoochee Hills, East Point, Hapeville, Palmetto, South Fulton, Fairburn, and Union City)

Fig. 12. Trends in Gender Distribution of COVID -19 Diagnoses in Fulton County by 14-day periods (Mar 02 - Sept 13, 2020)

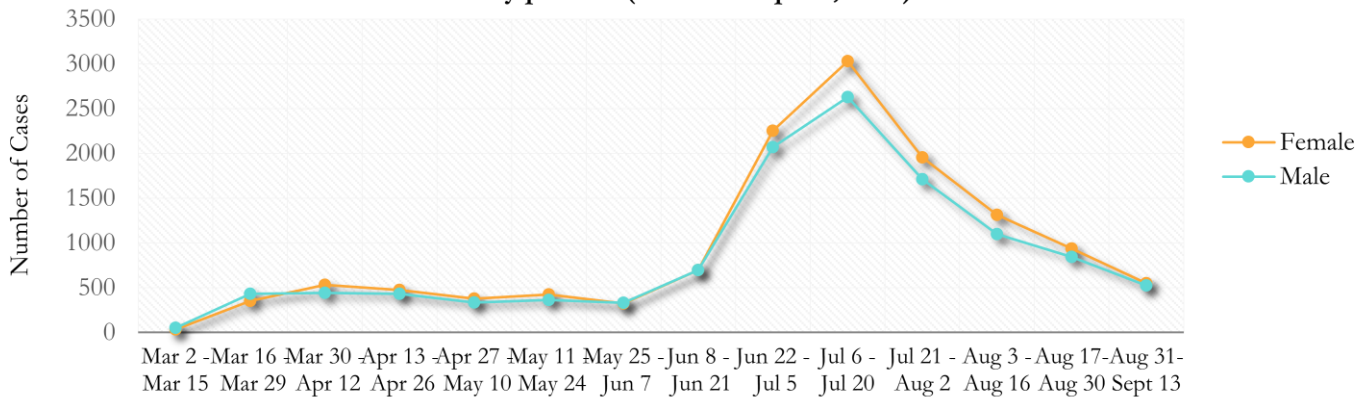
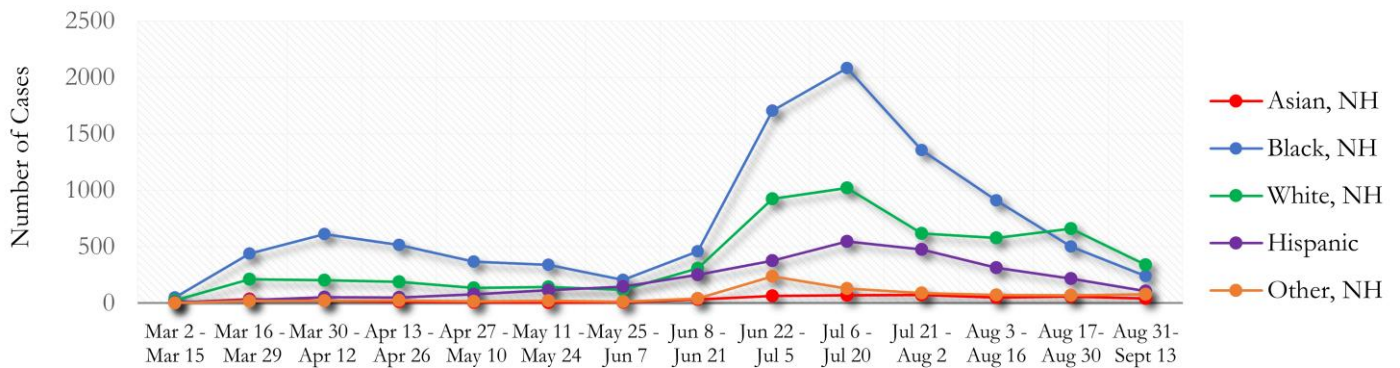


Fig. 13. Trends in Racial Distribution of COVID -19 Diagnoses in Fulton County by 14-day periods (Mar 02 - Sept 13, 2020)



About 27% of COVID cases are missing data on patient race and ethnicity. The majority of diagnoses made in the past two weeks were White-NH (42%) rather than Black-NH (30%).

Fig. 14. Racial Distribution of COVID -19 Cases in Fulton County by 14-day periods (Mar 02 - Sept 13, 2020)

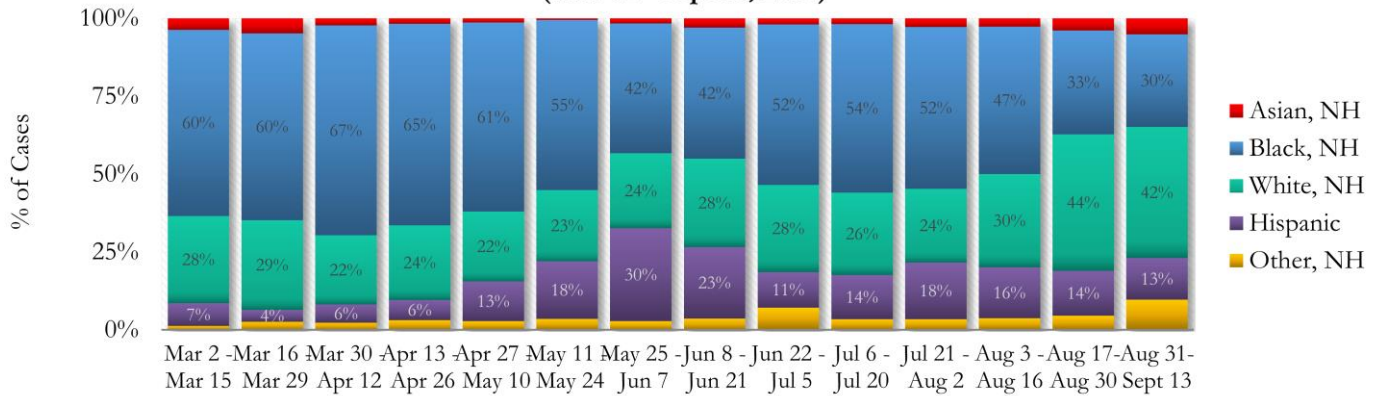
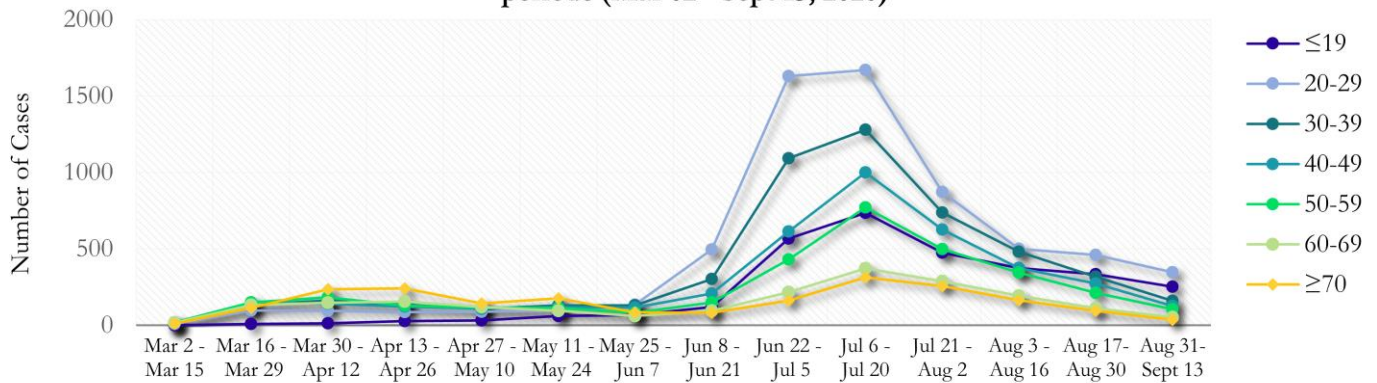
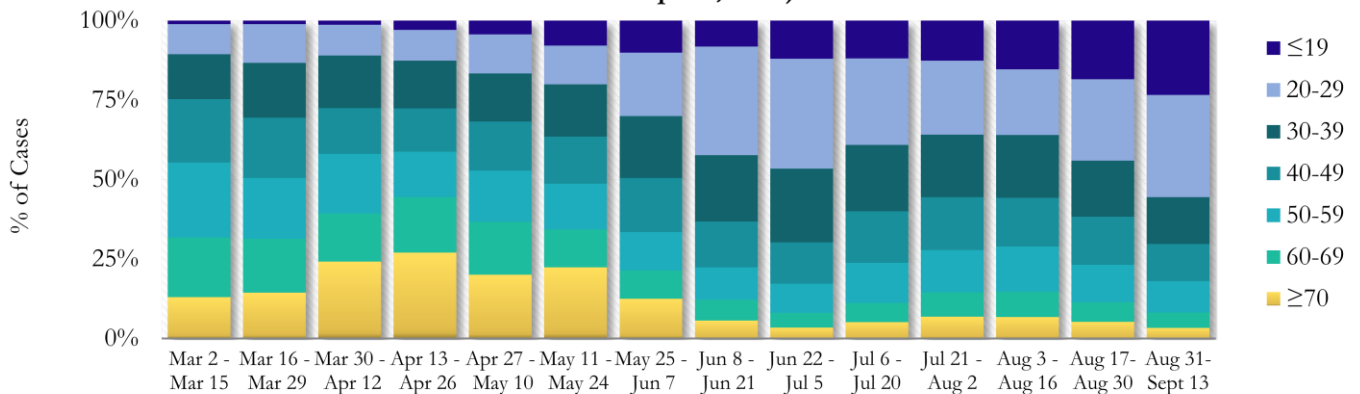


Fig. 15. Trends in Age Distribution of COVID -19 Diagnoses in Fulton County by 14-day periods (Mar 02 - Sept 13, 2020)



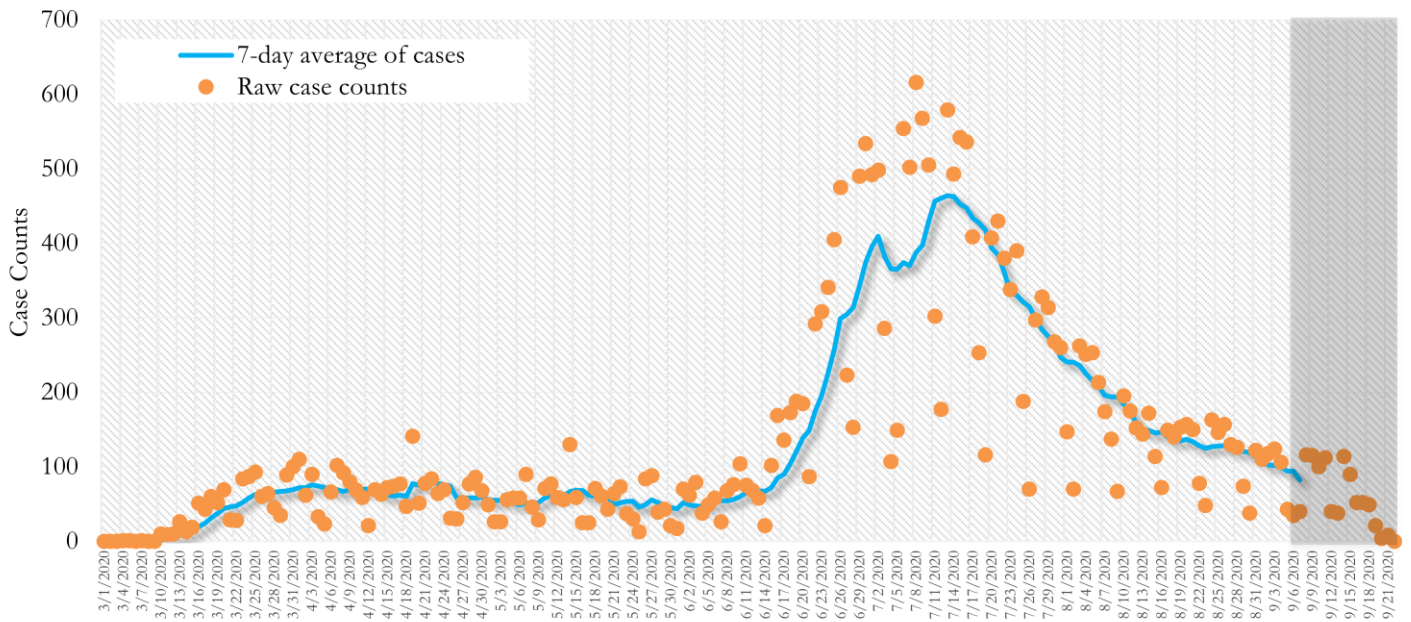
Earlier (March-May 2020) large proportions of reported cases were among persons aged 60 and older. However, starting in June, a higher number of cases were among persons aged between 20-29 years.

Fig. 16. Age Distribution of COVID -19 Cases in Fulton County by 14-day periods (Mar 02 - Sept 13, 2020)



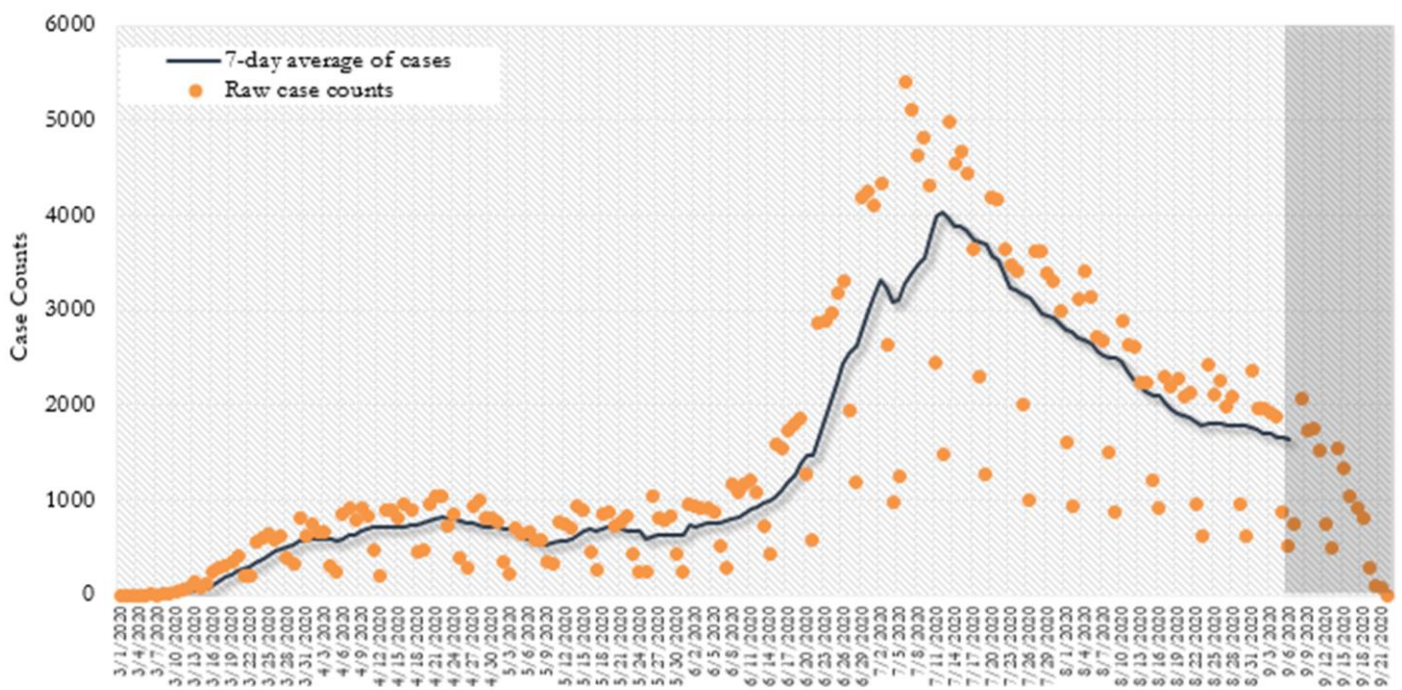
TRENDS IN COVID-19 CASES, HOSPITALIZATIONS AND DEATHS (7-DAY MOVING AVE.)

Fig. 17. New COVID-19 Cases in Fulton County Daily (Averaged over 7 days)



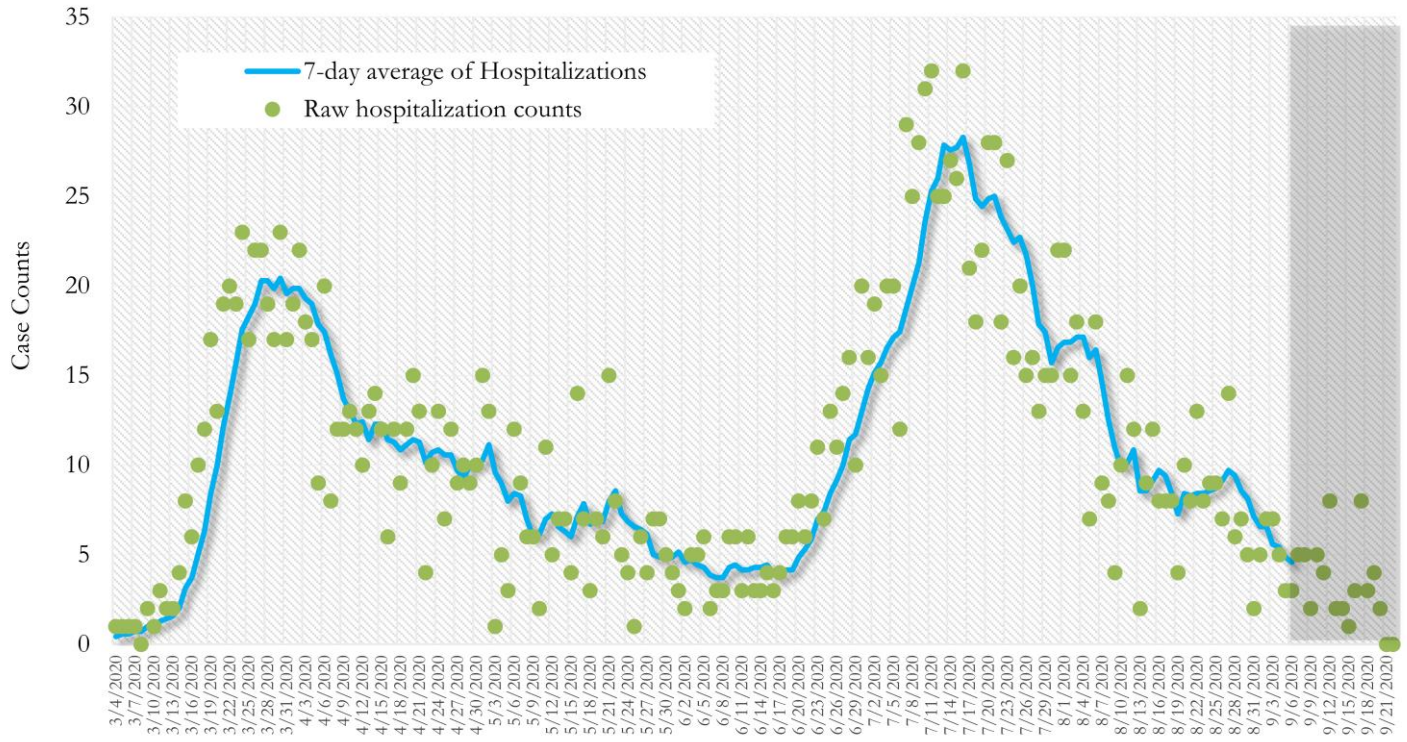
*Date of collection of first positive sample used (report creation date used where sample collection date is missing). Graph above reflects the trend in COVID-19 diagnosis. Due to the high volume of testing in recent weeks, there have been delays in reporting lab results. Thus, the trend is subject to change as more lab results get added to the state surveillance database.

Fig. 18. New COVID-19 Cases in Georgia State Daily (Averaged over 7 days)



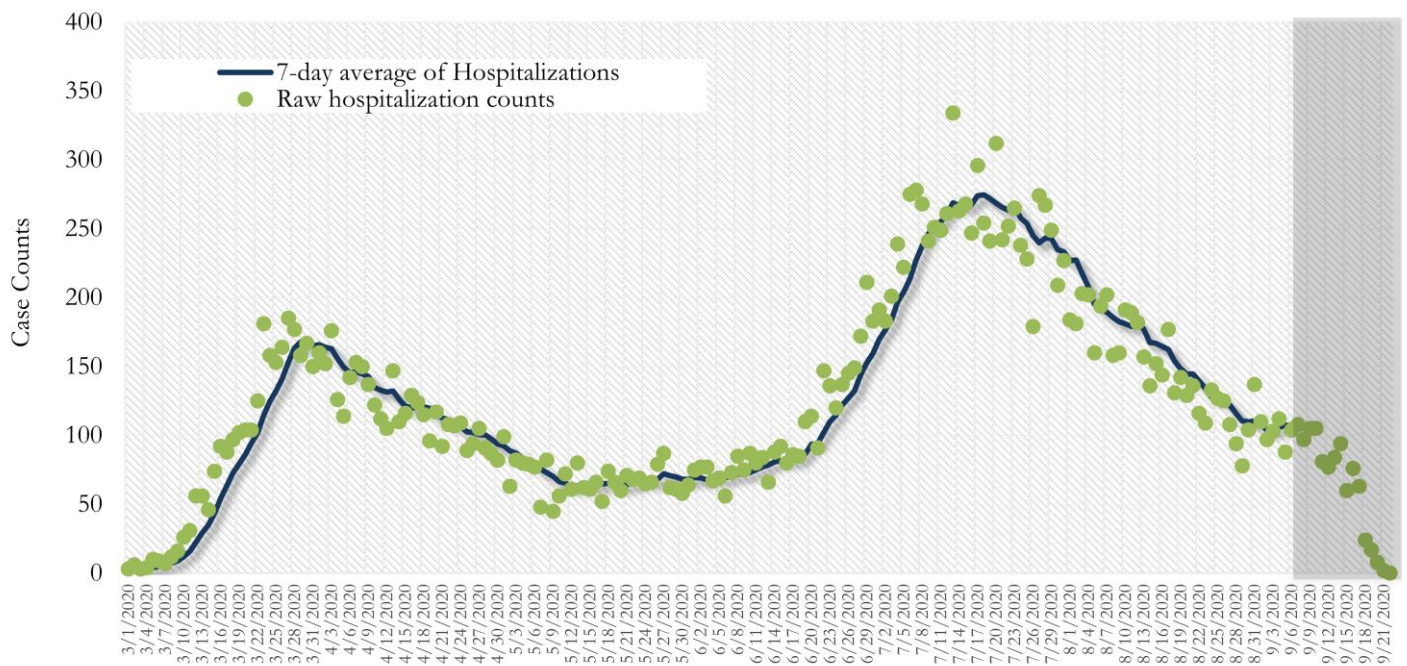
*Date of collection of first positive sample used (report creation date used where sample collection date is missing). Graph above reflects the trend in COVID-19 diagnosis. Due to the high volume of testing in recent weeks, there have been delays in reporting lab results. Thus, the trend is subject to change as more lab results get added to the state surveillance database.

Fig. 19. COVID-19 Hospitalizations in Fulton County Daily (Averaged over 7 days)



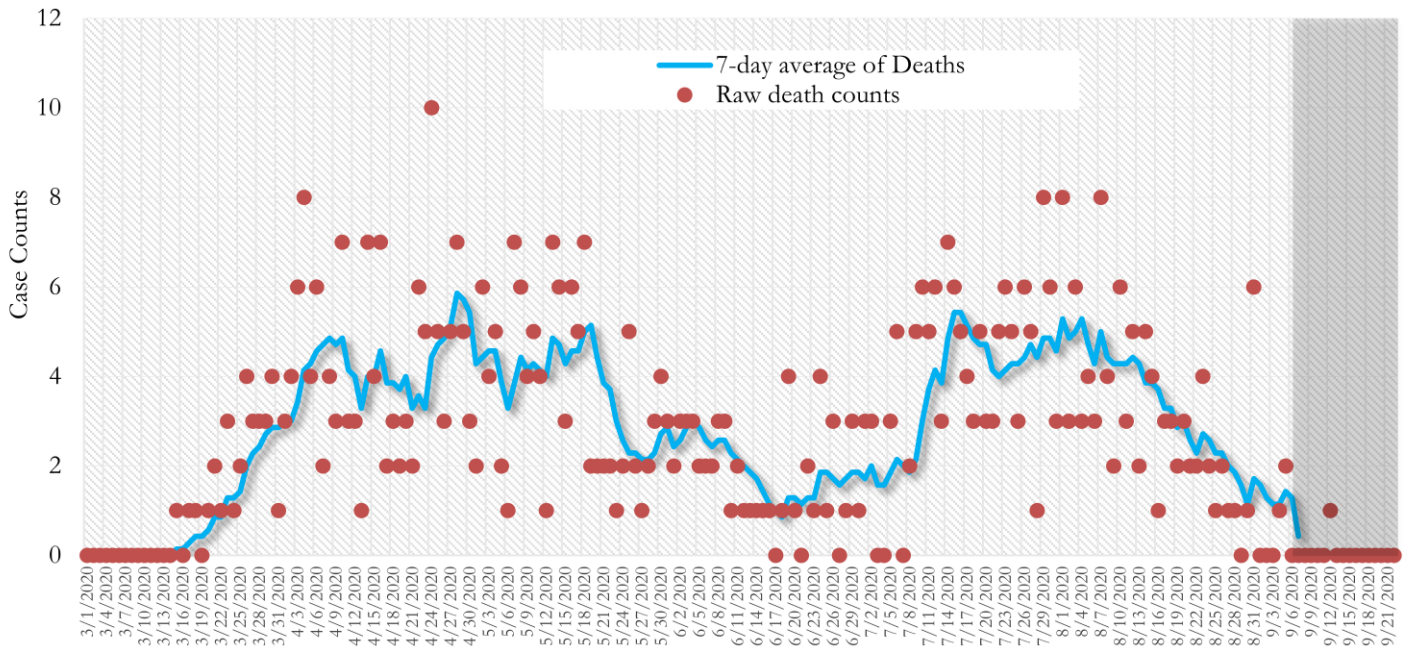
*Reported date of hospital admission used. Graph above reflects the trend in COVID-19 hospitalizations. Due to the high volume of new cases being added daily, there have been delays in reporting hospitalization data. Thus, the trend is likely to change as more hospitalization data is reported in the state surveillance database.

Fig. 20. COVID-19 Hospitalizations in Georgia State Daily (Averaged over 7 days)



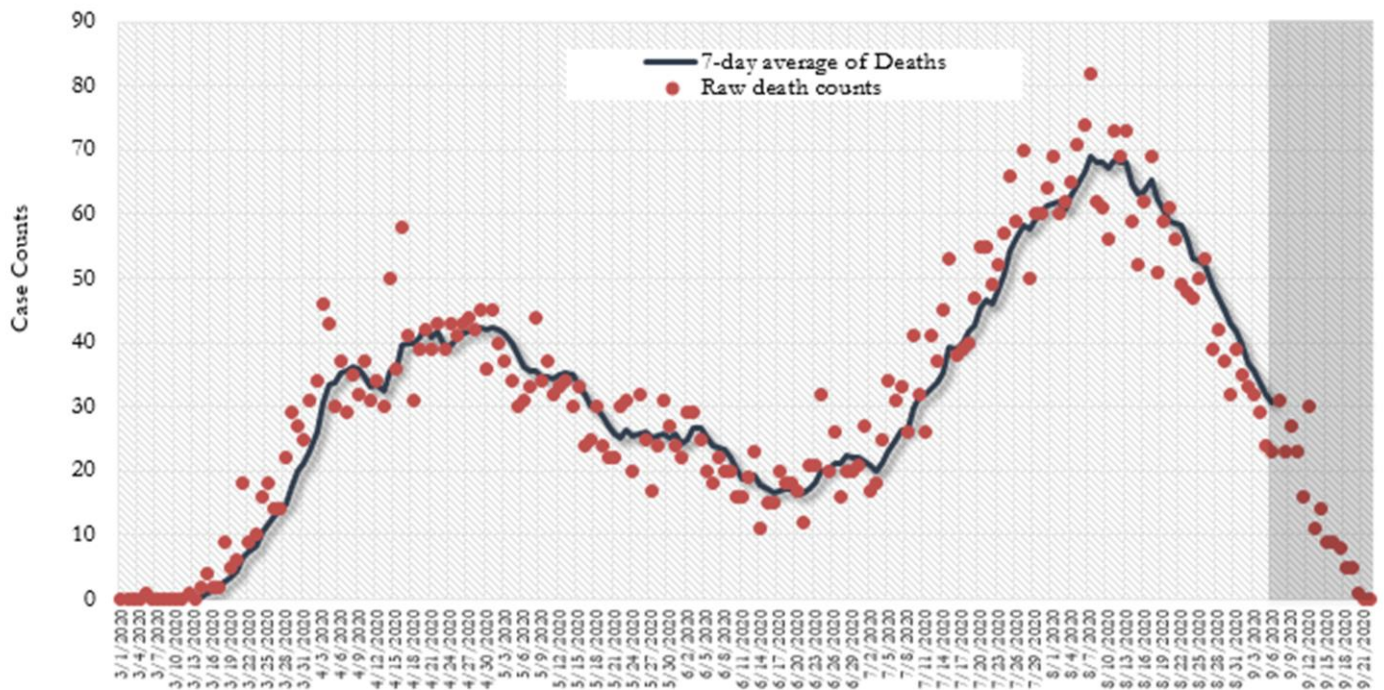
*Reported date of hospital admission used. Graph above reflects the trend in COVID-19 hospitalizations. Due to the high volume of new cases being added daily, there have been delays in reporting hospitalization data. Thus, the trend is likely to change as more hospitalization data is reported in the state surveillance database.

Fig. 21. COVID-19 Deaths in Fulton County Daily (Averaged over 7 days)



* Reported date of death used. Graph above reflects the trend in deaths attributed to COVID-19. The trend is likely to change as more data on deaths among persons with COVID-19 is reported in the state surveillance database.

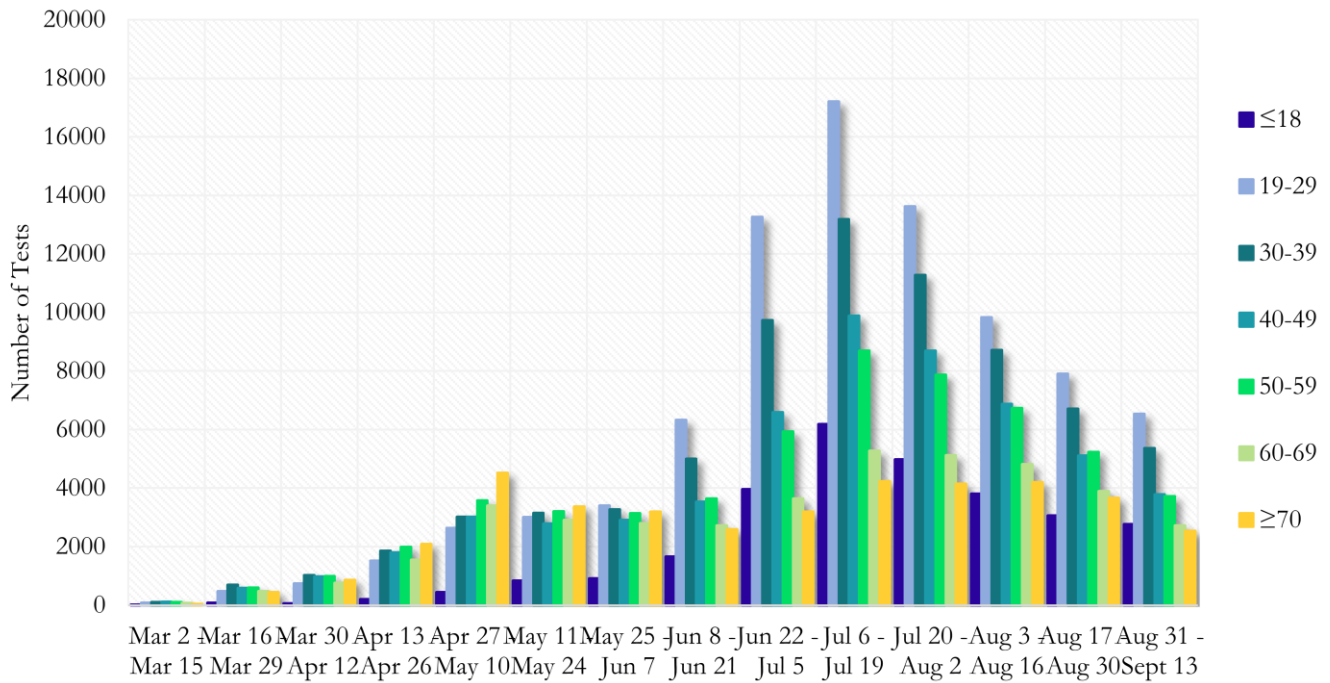
Fig. 22. COVID-19 Deaths in Georgia State Daily (Averaged over 7 days)



* Reported date of death used. Graph above reflects the trend in deaths attributed to COVID-19. The trend is likely to change as more data on deaths among persons with COVID-19 is reported in the state surveillance database.

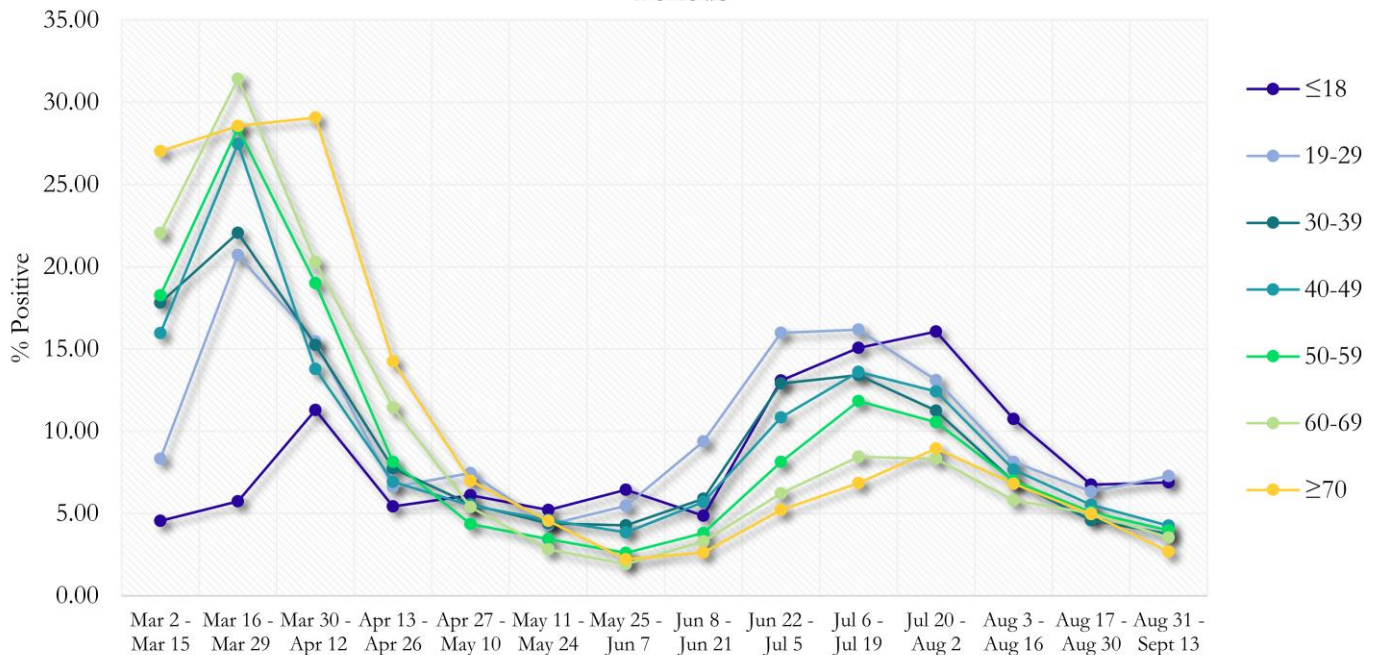
COVID-19 TESTING AND POSITIVITY IN FULTON COUNTY BY AGE AND RACE

Fig. 23. COVID-19 Tests by Age in Fulton County by 14-day Periods



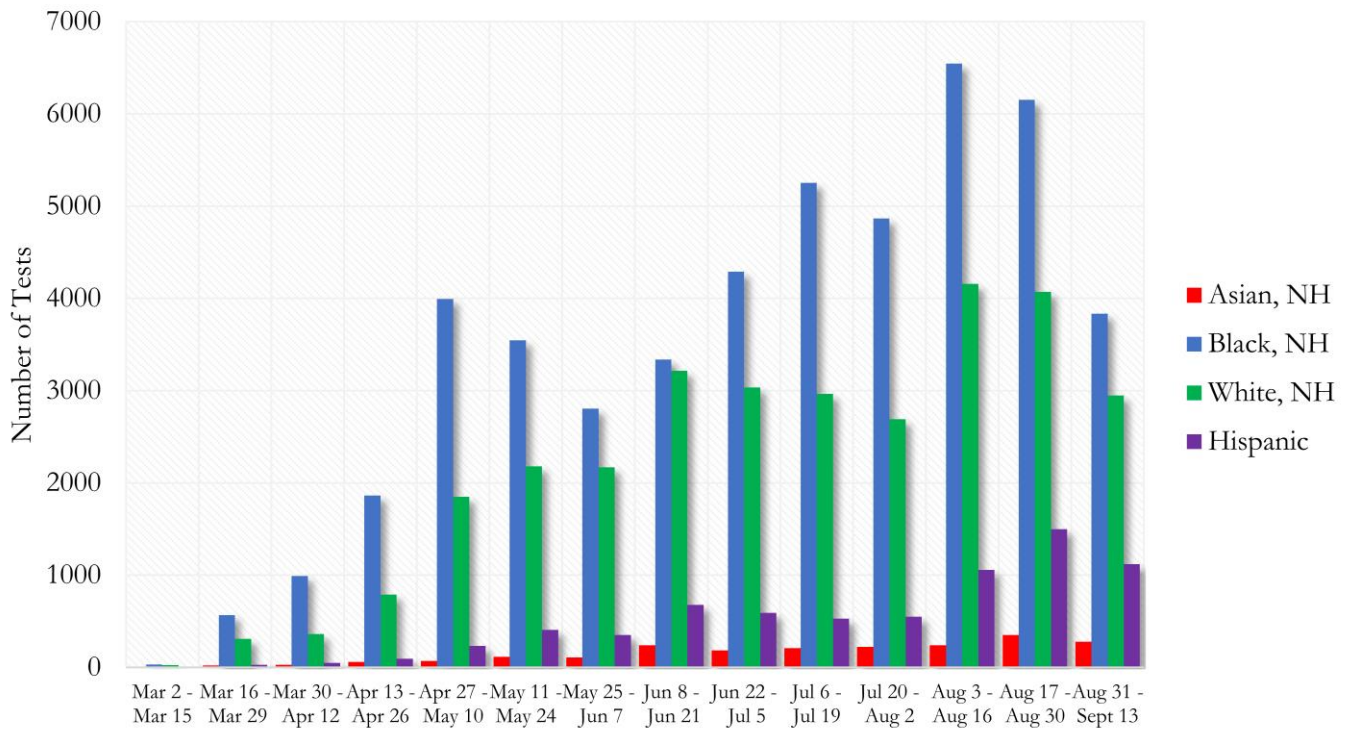
*Data on Polymerase Chain Reaction (PCR) tests only included.

Fig. 24. Percent Positive COVID-19 Tests by Age Group in Fulton County by 14-day Periods



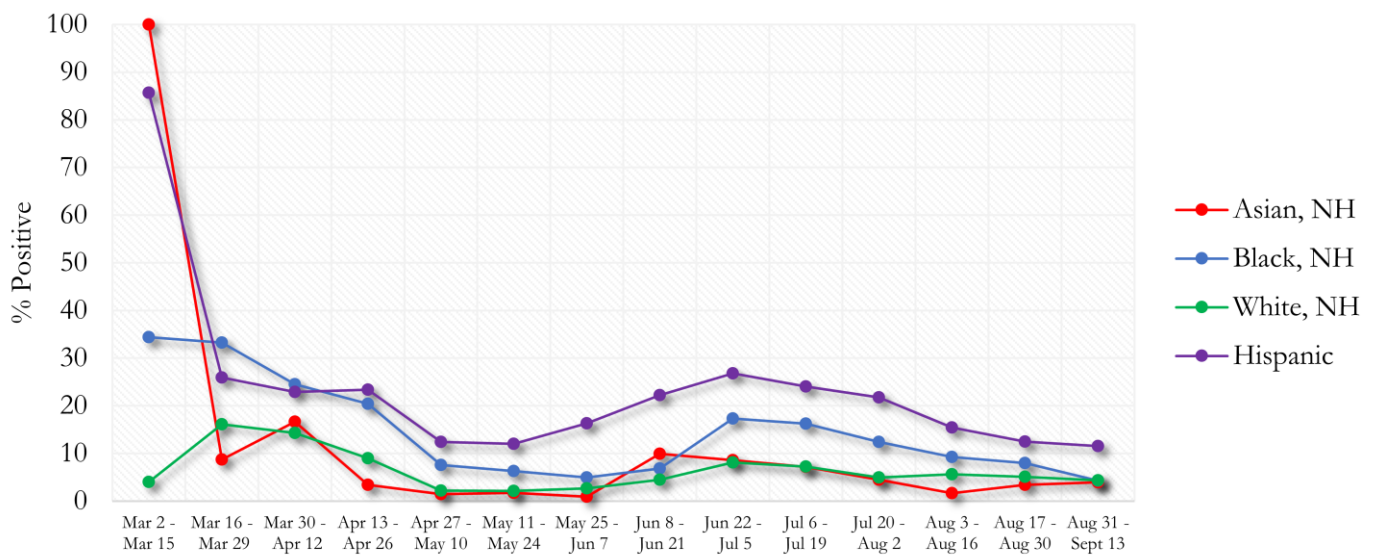
*Data on Polymerase Chain Reaction (PCR) tests only included.

Fig. 25. COVID-19 Tests by Race and Ethnicity in Fulton County by 14-day Periods



*Data on Polymerase Chain Reaction (PCR) tests only included.

Fig. 26. Percent Positive COVID-19 Tests by Race and Ethnicity in Fulton County by 14-day Periods



*Data on Polymerase Chain Reaction (PCR) tests only included.

COVID-19 CASE COUNTS BY ZIP CODE

	Prior (9/18/20)	Current Total (9/22/20)		New Cases (Period: 8/18/20 – 9/15/20) ¹		
	Count	Count	%	1st 14 days (Aug 18 – Aug 31)	Last 14 d. (Sept 1 – Sept 15)	% change ²
All Fulton	26670	27097	100%	1781	1345	↓ 24.5%
30004	1020	1032	3.81%	149	79	↓ 47.0%
30005	525	542	2.00%	60	50	↓ 16.7%
30009	440	449	1.66%	61	57	↓ 6.6%
30022	1126	1150	0.77%	109	75	↓ 31.2%
30023	<10	<10	<0.1%	<10	0	↓ 100.0%
30024	16	15	<0.1%	<10	0	↓ 100.0%
30075	1030	1058	3.90%	117	88	↓ 24.8%
30076	1012	1042	3.85%	91	84	↓ 7.7%
30080	<10	<10	<0.1%	0	0	-
30097	266	268	0.99%	22	27	↑ 22.7%
30098	-	-	-	0	0	-
30135	<10	<10	<0.1%	0	<10	-
30138	<10	<10	<0.1%	0	0	-
30139	-	-	-	0	0	-
30213	1014	1027	3.79%	57	28	↓ 50.9%
30268	182	185	0.68%	14	<10	↓ 42.9%
30291	737	748	2.76%	36	28	↓ 22.2%
30296	46	49	0.18%	<10	<10	-
30301	10	10	<0.1%	0	<10	-
30303	366	366	1.35%	10	<10	↓ 40.0%
30305	725	740	2.73%	40	30	↓ 25.0%
30306	330	332	1.23%	22	16	↓ 27.3%
30307	186	192	0.71%	17	<10	↓ 64.7%
30308	483	491	1.81%	50	30	↓ 40.0%
30309	742	756	2.79%	34	48	↑ 41.2%
30310	695	707	2.61%	28	24	↓ 14.3%
30311	757	764	2.82%	32	25	↓ 21.9%
30312	754	763	2.82%	26	26	-
30313	208	210	0.77%	45	23	↓ 48.9%
30314	540	546	2.01%	22	13	↓ 40.9%
30315	818	836	3.09%	65	35	↓ 46.2%
30316	371	375	1.38%	22	11	↓ 50.0%
30318	1585	1614	5.96%	89	71	↓ 20.2%
30319	131	132	0.49%	10	<10	↓ 10.0%
30321	11	11	<0.1%	0	0	-
30324	854	876	3.23%	39	44	↑ 12.8%
30326	210	223	0.82%	<10	18	↑ 157.1%
30327	512	525	1.94%	35	31	↓ 11.4%
30328	766	776	2.86%	48	43	↓ 10.4%
30331	1682	1701	6.28%	63	69	↑ 9.5%
30334	13	13	<0.1%	<10	0	↓ 100.0%
30336	81	81	0.30%	0	<10	-
30337	318	326	1.20%	17	<10	↓ 47.1%
30338	157	155	0.57%	10	<10	↓ 70.0%
30339	298	289	1.07%	15	<10	↓ 53.3%
30340	35	34	0.13%	<10	0	↓ 100.0%
30341	37	35	0.13%	<10	0	↓ 100.0%
30342	1132	1151	4.25%	67	51	↓ 23.9%
30344	856	863	3.18%	55	25	↓ 54.5%

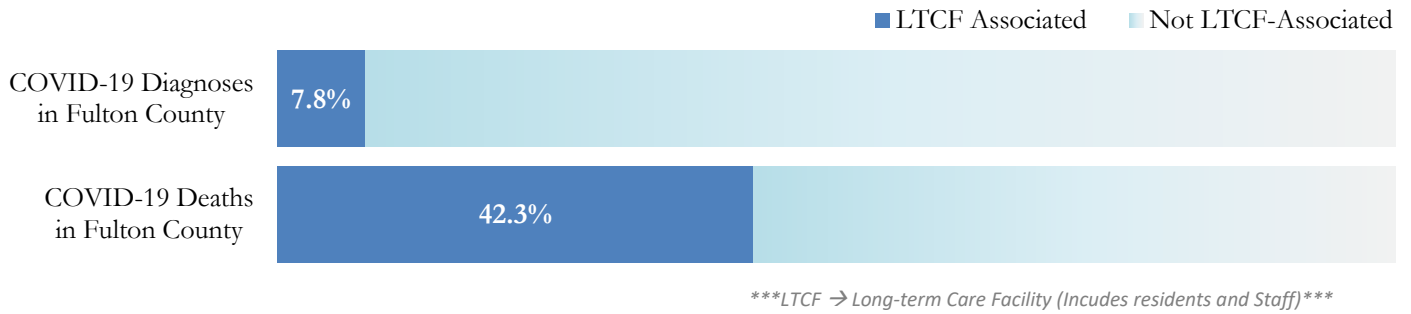
30345	33	31	0.11%	0	0	-
30349	1711	1738	6.41%	73	54	↓ 26.0%
30350	561	576	2.13%	35	47	↑ 34.3%
30354	407	413	1.52%	21	12	↓ 42.9%
30358	<10	<10	<0.1%	0	0	-
30363	59	60	0.22%	<10	<10	-
30374	31	31	0.11%	0	0	-
30606	<10	<10	<0.1%	0	0	-
31131	<10	<10	<0.1%	<10	0	↓ 100.0%
31150	<10	<10	<0.1%	0	0	-
Unknown	1182	754	2.78%	56	22	-

¹**New cases:** Cases diagnosed in most recent 28 days (based on reported dates of positive sample collection). To allow for lag in reporting results of new diagnoses from samples collected in the most recent week, data used for incident diagnoses analyses were moved back by one week. ²**Percent change:** These reflect the percentage increase or decrease of new diagnoses between the 14 days preceding the past 7 days and the 14 days preceding that. Changes in ZIP codes with less than 10 cases in both 2 week intervals are not reported**Data cleaning (either during case interviews or address geo-coding) may lead to reassignment of few cases from one territory to another based on their corrected addresses. These may appear as “decreases” when compared to the previous day’s count. These do not reflect errors in the data collection or analysis process but only reflect the minor day-to-day fluctuations in case counts that arise in an evolving public health database like COVID’s. **Note:** Sharp increases in territorial COVID case counts often reflect new cases diagnosed at long term care facilities located in those territories during facility-wide /mass screening events **All data reported are preliminary and subject to change.**

COVID-19 IN LONG-TERM CARE FACILITIES IN FULTON COUNTY

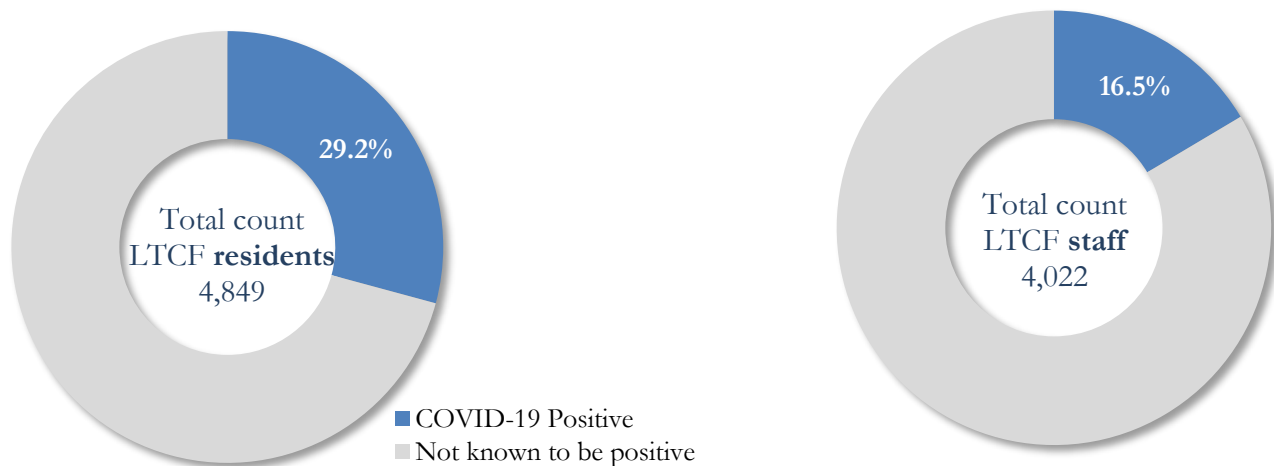
Older persons (aged 65 years and older) and persons who live in nursing homes or other long-term care facilities seem to be at higher risk for developing more serious complications from COVID-19. Extra precautions are recommended for individuals within this risk groups – Centers for Disease Control and Prevention (CDC 2020) <https://www.cdc.gov/coronavirus/2019-ncov/need-extra-precautions/people-at-higher-risk.html>

Fig. 27. COVID-19 Diagnoses and Deaths in Fulton County Associated with Long-Term Care Facilities



COVID-19 POSITIVITY:

Fig. 28. COVID-19 Positivity at 60 reporting Long-Term Care Facilities (LTCF) in Fulton County



COVID-19 Cases, Hospitalizations, and Deaths among 64 reporting Long-Term Care Facilities in Fulton County

	LTCF Residents (n=4,849)			LTCF Staff (n=4,022)		
	Cases	Hospitalizations	Deaths	Cases	Hospitalizations	Deaths
Average (count per fac.) ¹	22	5	4	10	1	<0.1
Median (count per fac.) ¹	9	1	0	7	0	0
Lowest counts	0	0	0	0	0	0
Highest counts	138	48	30	66	8	2
Total Count	1416 (29.2%) ^a	304 (21.5%) ^b	232 (16.4%) ^b	667 (16.6%) ^a	32 (4.8%) ^b	5 (<1.0%) ^b

^a Percentage shown reflects proportion of total residents/staff tested who were positive (i.e. COVID-19 Positivity). | ^b Percentages shown are proportions of persons residents/staff diagnosed with COVID-19 who were hospitalized or died after diagnoses.