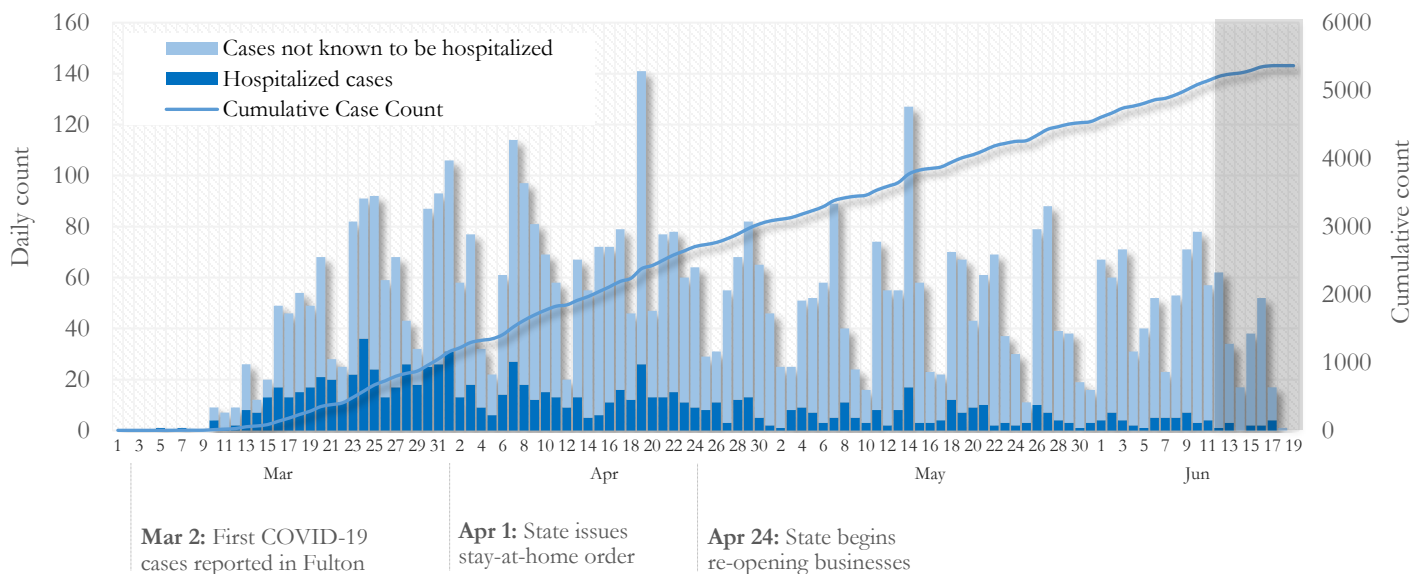


SUMMARY

- As of June 19, 2020, Fulton has recorded **5,367** cases of the 2019 novel coronavirus (COVID-19) and **301** deaths.
- The central portion of the county (Atlanta metro) accounts for 46% of the cumulative case count while the northern and southern parts of the county together account for 44% of the COVID-19 cumulative case count in the county.
- By city, cumulative COVID-19 diagnoses rates range from 168.6 per 100,000 persons (Johns Creek) to 978.1 per 100,000 persons (Union City).
- Among all persons diagnosed with COVID-19 in Fulton County, 18.2% required hospitalization and 5.6% died.
- Residents and staff of long-term care facilities account for 23% of COVID-19 diagnoses and 52% of COVID-19 deaths in Fulton County (6/17/20).

Daily and Cumulative COVID-19 diagnoses in Fulton County, GA (6/19/20)



*Counts shown reflect the number of confirmed cases as of 9:00am on 6/19/20 using the date of first positive sample collection. Where date of sample collection was not available or missing, the date of report creation in GA SENDSS was used instead. **Note:** All data reported are preliminary and subject to change. Delays in data reporting may cause changes in data counts, particularly in the shaded portion.

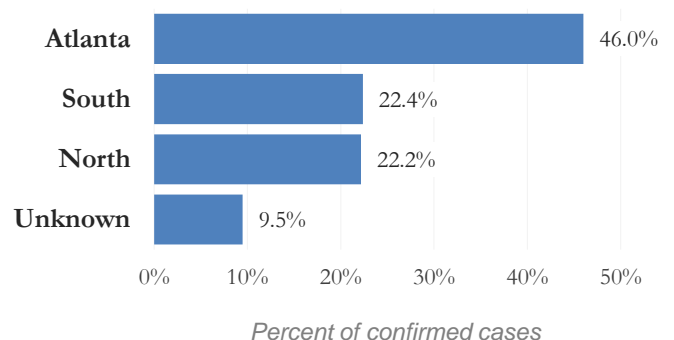
DISTRIBUTION OF COVID-19 DIAGNOSES BY REGION

New cases: 43% of the new COVID-19 cases diagnosed in the past 2 weeks occurred in Atlanta while 31% and 19% occurred in the Northern and Southern regions of the county respectively.

Fulton Region	% Cumulative count	% New cases*
Atlanta	46.0%	43.4%
North ¹	22.2%	31.0%
South ²	22.4%	18.6%
Unincorporated/Unknown	9.5%	7.0%

¹Includes all Fulton County cities north of Atlanta metro (Alpharetta, Milton, Johns Creek, Roswell, Sandy Springs, Mountain Park) | ²Includes all cities south of Atlanta (College Park, Chattahoochee Hills, East Point, Hapeville, Palmetto, South Fulton, Fairburn, and Union City) ***New cases:** Cases diagnosed in the past 2 weeks only (using the date of sample collection).

Fig. 2. Distribution of COVID 19 cases by Region (6/19/20)

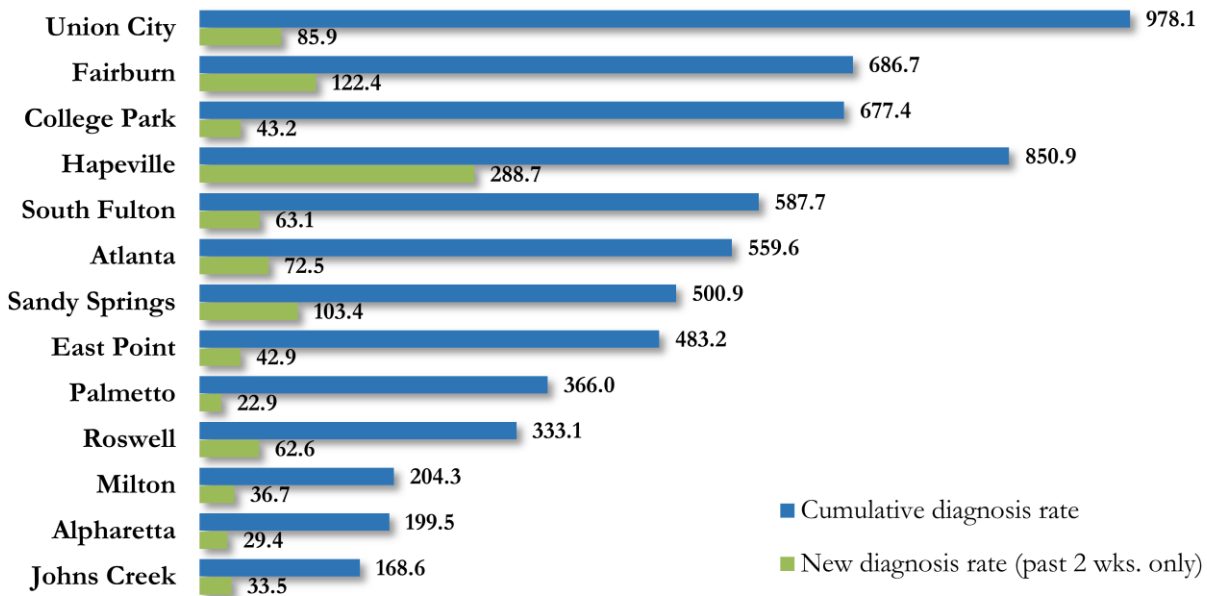


COVID-19 CASE COUNTS AND RATES BY CITY

	Prior (6/17/20)	Current Total (6/19/20)			New Cases (Period: 5/15/20 – 6/12/20) ¹			
	Count	Count	%	Cum. Rate ²	Ist 14 d.	Last 14 d.	% change ³	Rate ⁴ (last 14 d).
Atlanta	2441	2469	46.0%	559.6	346	320	↓ 7.5%	72.5
South Fulton	549	559	10.4%	587.7	49	60	↑ 22.4%	63.1
Sandy Springs	524	528	9.8%	500.9	94	109	↑ 16.0%	103.4
Roswell	304	314	5.9%	333.1	38	59	↑ 55.3%	62.6
East Point	166	169	3.1%	483.2	21	15	↓ 28.6%	42.9
Johns Creek	138	141	2.6%	168.6	11	28	↑ 154.5%	33.5
Union City	197	205	3.8%	978.1	29	18	↓ 37.9%	85.9
Alpharetta	123	129	2.4%	199.5	16	19	↑ 18.8%	29.4
Milton	75	78	1.5%	204.3	<10	14	↑ 100.0%	36.7
Fairburn	101	101	1.9%	686.7	<10	18	↑ 125.0%	122.4
College Park	92	94	1.8%	677.4	13	<10	↓ 53.8%	43.2
Palmetto	16	16	0.3%	366.0	0	<10	-	22.9
Hapeville	48	56	1.0%	850.9	10	19	↑ 90.0%	288.7
Mountain Park	0	0	0.0%	-	0	0	-	0.0
Unknown	512	508	9.5%	-	52	51	-	-

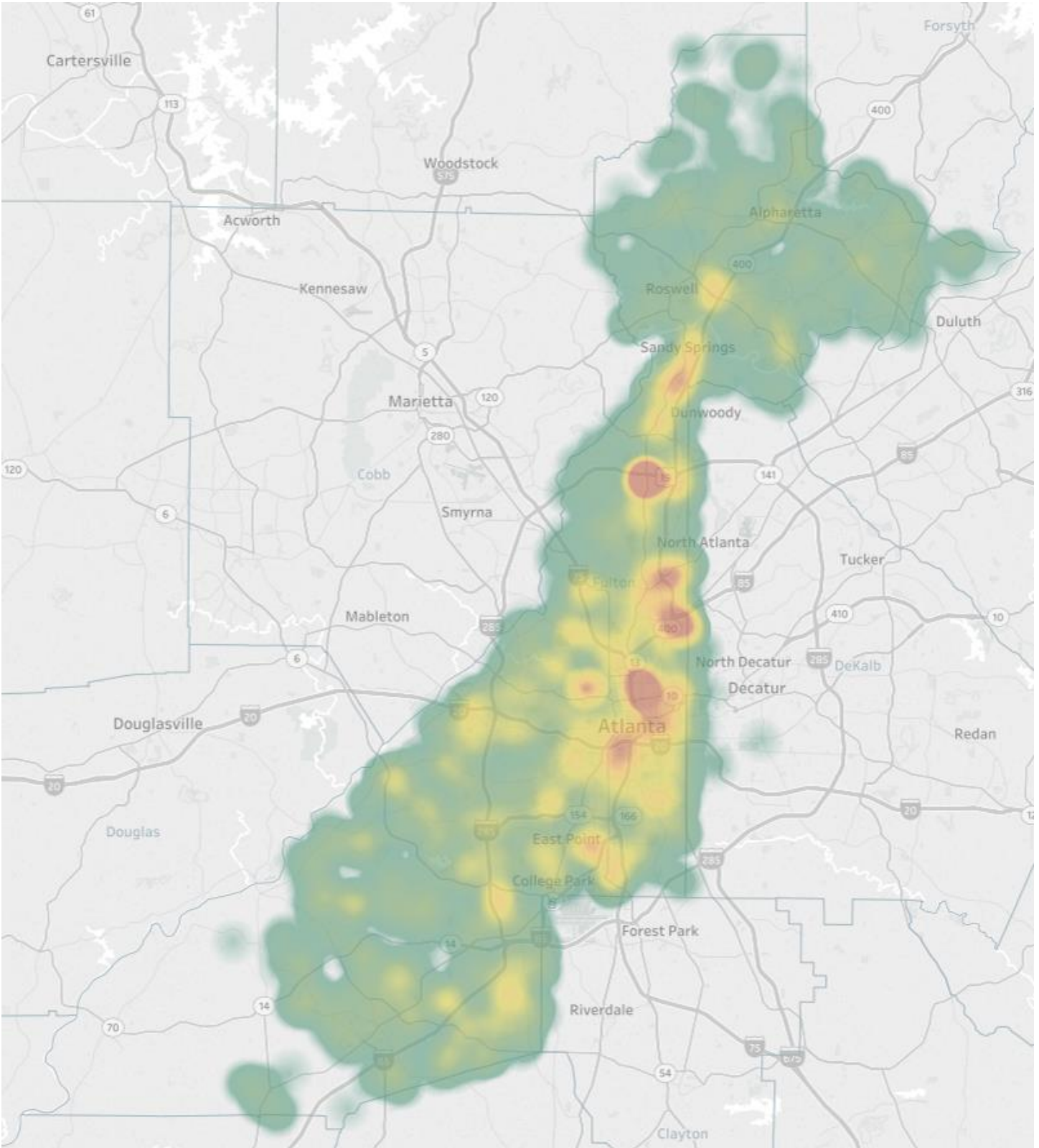
¹New cases: Cases diagnosed in most recent 28 days (based on reported dates of positive sample collection). To allow for lag in reporting results of new diagnoses from samples collected in the most recent week, data used for incident diagnoses analyses were moved back by one week. ²Cumulative diagnosis rate: Population estimates from US Census Bureau used to calculate cumulative diagnoses rate. All rates shown are per 100,000 persons. ³Percent change: These reflect the percentage increase or decrease in new diagnoses between the 14 days preceding the most recent 7 days and the 14 days preceding that. Changes in cities with less than 10 cases in both 2 week intervals are not reported. ⁴Incidence Rate: Rate of new diagnoses in the recent past 14 days. **Data cleaning (either during case interviews or address geo-coding) may lead to reassignment of few cases from one territory to another based on their corrected addresses. These may appear as “decreases” when compared to the previous day’s count. These do not reflect errors in the data collection or analysis process but only reflect the minor day-to-day fluctuations in case counts that arise in an evolving public health database like COVID’s. **Note:** Sharp increases in territorial COVID case counts often reflect new cases diagnosed at long term care facilities located in those territories during facility-wide /mass screening events All data reported are preliminary and subject to change.

Fig. 3. Incident & Cumulative Diagnoses Rates for COVID-19 by City (6/19/20)



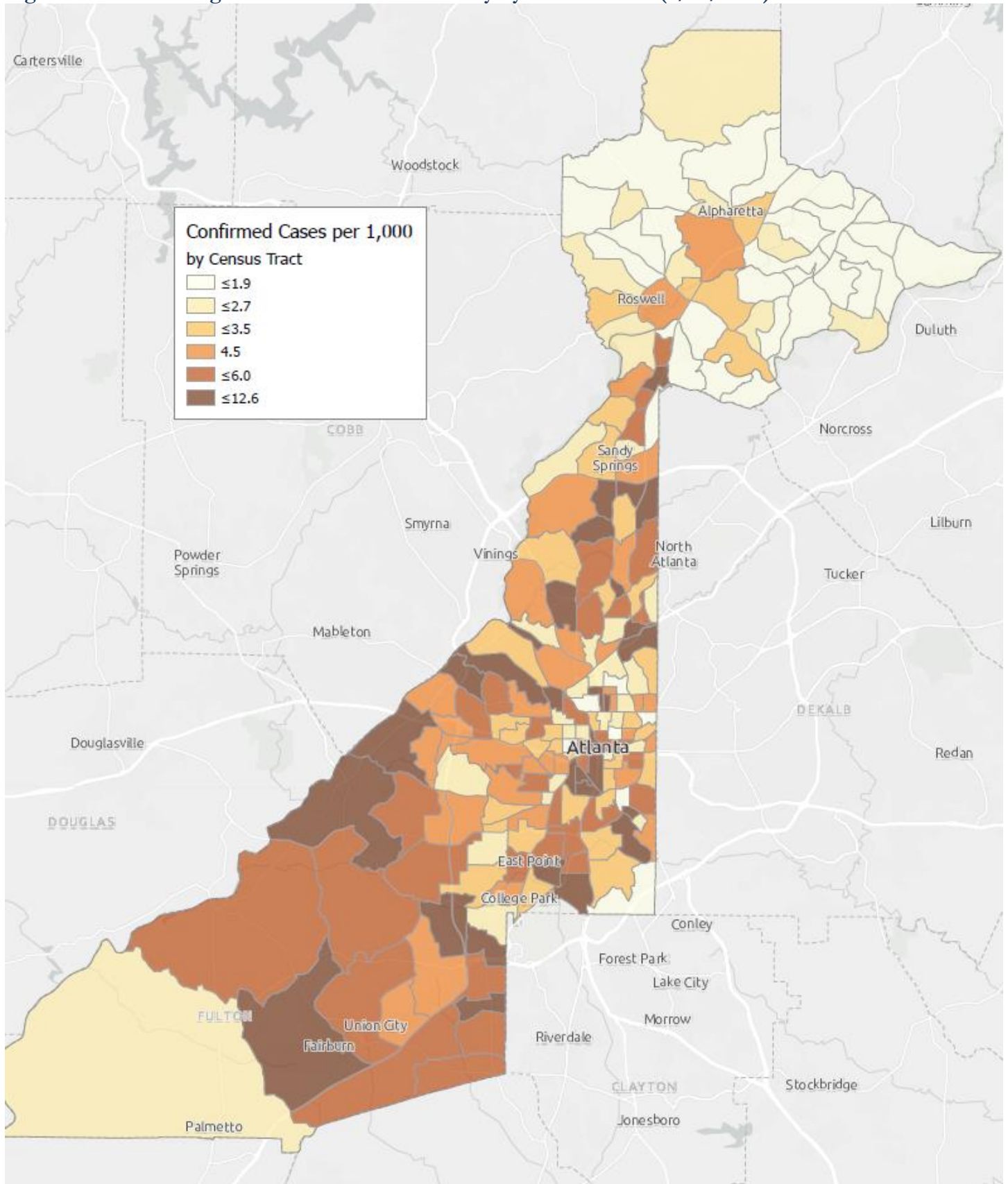
*Rates shown are per 100,000 persons | **Note:** Mass testing in specific locations (e.g. long term care facilities) may cause sharp increases in the cumulative rate of COVID-19 diagnosis in those territories. All data shown are preliminary and are subject to change as testing results get updated.

Fig. 4. Density Map of COVID-19 Cases in Fulton County (6/19/20)



NB. Data used excludes the outbreak-related cases diagnosed at long-term care facilities and reflects the current geographical distribution of COVID19 diagnoses in the general Fulton County community.

Fig. 5. COVID-19 Diagnosis Rates in Fulton County by Census Tract (6/19/2020)



*Rates shown are per 1,000 populations.

NB. Data used excludes the outbreak-related cases diagnosed at long-term care facilities and reflects the current geographical distribution of COVID19 diagnoses in

COVID-19 CASE COUNTS BY ZIP CODE

	Prior (6/17/20)	Current Total (6/19/20)		New Cases (Period: 5/15/20 – 6/12/20) ¹		
	Count	Count	%	1st 14 days	Last 14 d.	% change ²
30331	401	404	7.5%	34	35	↑ 2.9%
30318	323	325	6.1%	69	35	↓ 49.3%
30349	300	301	5.6%	32	36	↑ 12.5%
30213	223	225	4.2%	21	34	↑ 61.9%
30315	168	164	3.1%	16	14	↓ 12.5%
30344	155	159	3.0%	20	10	↓ 50.0%
30311	146	154	2.9%	11	18	↑ 63.6%
30342	254	261	4.9%	48	43	↓ 10.4%
30314	207	208	3.9%	28	<10	↓ 67.9%
30310	179	181	3.4%	46	20	↓ 56.5%
30308	86	86	1.6%	<10	10	↑ 400.0%
30022	130	133	2.5%	23	25	↑ 8.7%
30327	113	109	2.0%	25	11	↓ 56.0%
30004	108	112	2.1%	11	20	↑ 81.8%
30309	156	147	2.7%	12	20	↑ 66.7%
30076	114	117	2.2%	11	27	↑ 145.5%
30291	220	228	4.2%	29	18	↓ 37.9%
30350	141	146	2.7%	24	42	↑ 75.0%
30075	170	176	3.3%	19	29	↑ 52.6%
30328	128	125	2.3%	19	29	↑ 52.6%
30316	52	53	1.0%	<10	<10	-
30312	235	236	4.4%	13	15	↑ 15.4%
30005	51	54	1.0%	<10	<10	-
30305	157	159	3.0%	32	47	↑ 46.9%
30306	55	52	1.0%	<10	<10	-
30324	165	168	3.1%	30	52	↑ 73.3%
30337	88	90	1.7%	13	<10	↓ 61.5%
30009	55	55	1.0%	<10	10	↑ 66.7%
30313	38	42	0.8%	0	<10	-
30326	33	34	0.6%	<10	<10	-
30097	46	51	1.0%	<10	<10	-
30354	74	84	1.6%	16	22	↑ 37.5%
30303	37	39	0.7%	<10	<10	-
30339	18	14	0.3%	0	<10	-
30268	21	21	0.4%	0	<10	-
30307	20	19	0.4%	<10	<10	-
30319	31	33	0.6%	<10	<10	-
30336	22	28	0.5%	<10	<10	-
30296	13	13	0.2%	0	<10	-
30363	10	<10	0.2%	<10	<10	-
30301	<10	<10	<0.1%	0	0	↔
30345	10	11	0.2%	<10	<10	-
31131	<10	<10	<0.1%	0	0	↔
30023	<10	<10	<0.1%	<10	0	↓ 100.0%
30080	<10	<10	<0.1%	<10	0	↓ 100.0%
30135	<10	<10	<0.1%	0	0	↔
30138	<10	<10	<0.1%	0	0	↔
30139	-	-	-	0	0	↔
30321	<10	<10	<0.1%	<10	0	↓ 100.0%
30340	11	12	0.2%	<10	<10	-
30341	13	14	0.3%	<10	<10	-
30358	<10	<10	<0.1%	0	0	↔

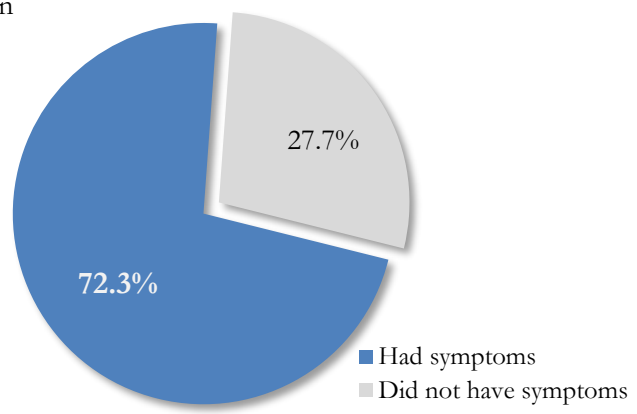
30374	19	20	0.4%	<10	<10	-
30606	<10	<10	<0.1%	0	0	↔
31150	<10	<10	<0.1%	0	0	↔
30024	<10	-	-	0	0	↔
30098	-	-	-	0	0	↔
30334	<10	<10	<0.1%	<10	<10	-
30338	<10	<10	<0.1%	0	<10	-
Unknown	267	272	5.1%	27	30	-

¹**New cases:** Cases diagnosed in most recent 28 days (based on reported dates of positive sample collection). To allow for lag in reporting results of new diagnoses from samples collected in the most recent week, data used for incident diagnoses analyses were moved back by one week. ²**Percent change:** These reflect the percentage increase or decrease of new diagnoses between the 14 days preceding the past 7 days and the 14 days preceding that. Changes in ZIP codes with less than 10 cases in both 2 week intervals are not reported**Data cleaning (either during case interviews or address geo-coding) may lead to reassignment of few cases from one territory to another based on their corrected addresses. These may appear as “decreases” when compared to the previous day’s count. These do not reflect errors in the data collection or analysis process but only reflect the minor day-to-day fluctuations in case counts that arise in an evolving public health database like COVID’s. **Note:** Sharp increases in territorial COVID case counts often reflect new cases diagnosed at long term care facilities located in those territories during facility-wide /mass screening events **All data reported are preliminary and subject to change.**

REPORTING SYMPTOMS AMONG PERSONS DIAGNOSED WITH COVID-19 IN FULTON

People with COVID-19 have reported a wide range of symptoms ranging from mild symptoms to severe illness. Symptoms may appear 2-14 days after exposure to the virus. Symptoms reported include: cough, shortness of breath/difficulty breathing, fever, chills, repeated shaking with chills, muscle pain, headache, sore throat, new loss of taste or smell – Centers for Disease Control and Prevention (CDC) <https://www.cdc.gov/coronavirus/2019-ncov/symptoms-testing/symptoms.html>

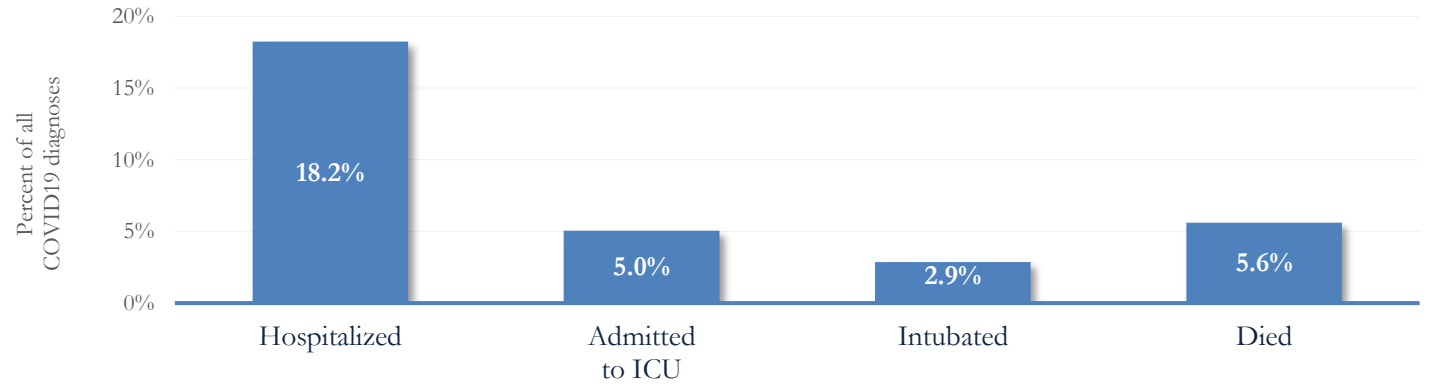
Fig. 6. Proportion reporting Symptoms in Fulton County (6/19/20)



COVID-19 cases who have been case interviewed or had medical charts reviewed as at 6/19/20 only

COVID-19 HOSPITALIZATIONS, ICU ADMISSIONS AND DEATHS IN FULTON

Fig. 7. Hospitalizations, ICU Admissions and Deaths among COVID-19 Diagnoses in Fulton County (5/29/20)



DEMOGRAPHIC DISTRIBUTIONS – COVID 19 DIAGNOSES AND DEATHS IN FULTON

Distribution of COVID-19 diagnoses in Fulton County by Fulton Region – 6/19/20

	North Fulton Cities ¹ Count (%)	Atlanta Count (%)	South Fulton Cities ² Count (%)	Unknown City Count (%)	All Fulton Count (%)
Total COVID-19 cases	1190	2469	1200	508	5367
Gender: Female	567 (47.6%)	1214 (49.2%)	684 (57.0%)	263 (51.8%)	2728 (50.8%)
Male	611 (51.3%)	1221 (49.5%)	498 (41.5%)	239 (47.0%)	2569 (47.9%)
Unknown	12 (1.0%)	34 (1.4%)	18 (1.5%)	<10	70 (1.3%)
Age: <15	31 (2.6%)	30 (1.2%)	17 (1.4%)	13 (2.6%)	91 (1.7%)
15-24	153 (12.9%)	214 (8.7%)	90 (7.5%)	39 (7.7%)	496 (9.2%)
25-34	191 (16.1%)	421 (17.1%)	150 (12.5%)	100 (19.7%)	862 (16.1%)
35-44	213 (17.9%)	369 (14.9%)	193 (16.1%)	81 (15.9%)	856 (15.9%)
45-54	211 (17.7%)	336 (13.6%)	208 (17.3%)	82 (16.1%)	837 (15.6%)
55-64	180 (15.1%)	346 (14.0%)	213 (17.8%)	66 (13.0%)	805 (15.0%)
65-74	104 (8.7%)	350 (14.2%)	156 (13.0%)	38 (7.5%)	648 (12.1%)
≥75	105 (8.8%)	386 (15.6%)	171 (14.3%)	84 (16.5%)	746 (13.9%)
Unknown	<10	17 (0.7%)	<10	<10	26 (0.5%)
Race: Asian, NH	56 (4.7%)	30 (1.2%)	<10	12 (2.4%)	100 (1.9%)
Black, NH	159 (13.4%)	1321 (53.5%)	844 (70.3%)	192 (37.8%)	2516 (46.9%)
White, NH	403 (33.9%)	440 (17.8%)	89 (7.4%)	93 (18.3%)	1025 (19.1%)
Hispanic	242 (20.3%)	169 (6.8%)	64 (5.3%)	54 (10.6%)	529 (9.9%)
Other, NH	35 (2.9%)	50 (2.0%)	15 (1.3%)	18 (3.5%)	118 (2.2%)
Unknown	295 (24.8%)	459 (18.6%)	186 (15.5%)	139 (27.4%)	1079 (20.1%)

¹Includes all Fulton County cities north of Atlanta metro (Alpharetta, Milton, Johns Creek, Roswell, Sandy Springs, Mountain Park) ²Includes all cities south of Atlanta (College Park, Chattahoochee Hills, East Point, Hapeville, Palmetto, South Fulton, Fairburn, Union City). **Note:** All data reported are preliminary and subject to change.

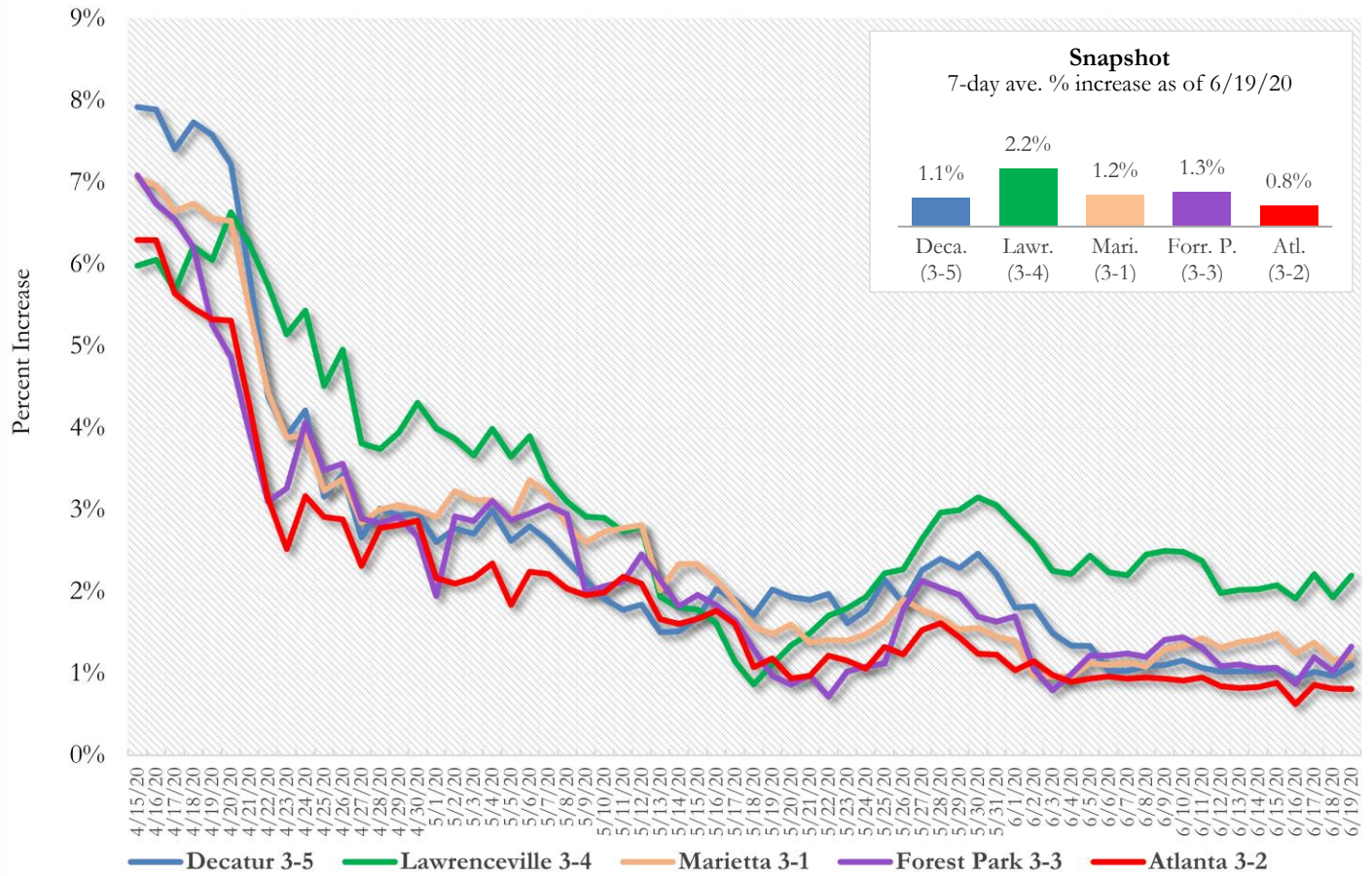
Distribution of COVID-19 Deaths in Fulton County by Fulton Region – 6/19/20

	North Fulton Cities ¹ Count (%)	Atlanta Count (%)	South Fulton Cities ² Count (%)	Unknown City Count (%)	All Fulton Count (%)
Total COVID-19 deaths	37	143	92	29	301
Gender: Female	12 (32.4%)	57 (39.9%)	49 (53.3%)	18 (62.1%)	136 (45.2%)
Male	24 (64.9%)	86 (60.1%)	43 (46.7%)	11 (37.9%)	164 (54.5%)
Unknown	<10	0	0	0	<10
Age: <65	<10	25 (17.5%)	26 (28.3%)	<10	59 (19.6%)
65-74	<10	36 (25.2%)	24 (26.1%)	<10	70 (23.3%)
75-84	10 (27.0%)	40 (28.0%)	19 (20.7%)	<10	77 (25.6%)
≥85	16 (43.2%)	42 (29.4%)	23 (25.0%)	14 (48.3%)	95 (31.6%)
Unknown	0	0	0	0	0
Race: Asian, NH	0	<10	0	0	<10
Black, NH	<10	122 (85.3%)	80 (87.0%)	15 (51.7%)	223 (74.1%)
White, NH	28 (75.7%)	15 (10.5%)	<10	13 (44.8%)	65 (21.6%)
Hispanic	<10	<10	<10	<10	<10
Other, NH	0	<10	0	0	<10
Unknown	0	<10	0	0	<10

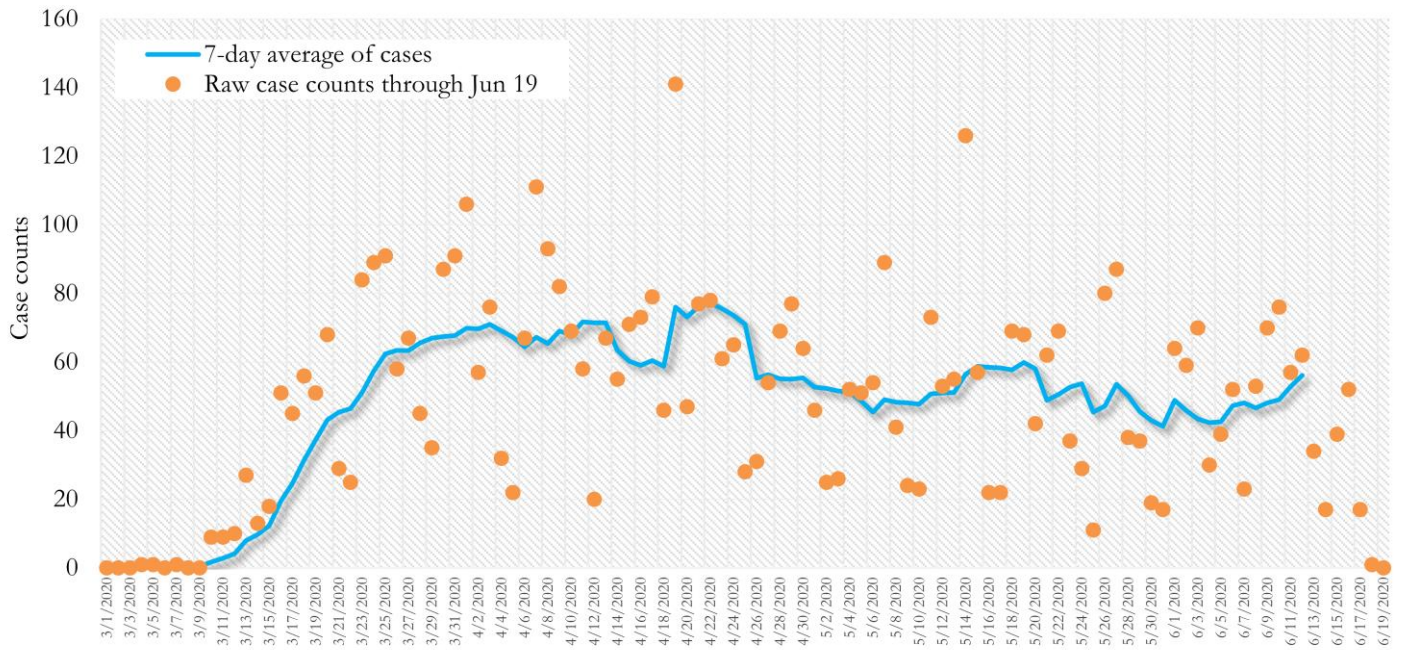
¹Includes all Fulton County cities north of Atlanta metro (Alpharetta, Milton, Johns Creek, Roswell, Sandy Springs, Mountain Park) ²Includes all cities south of Atlanta (College Park, Chattahoochee Hills, East Point, Hapeville, Palmetto, South Fulton, Fairburn, Union City). **Note:** All data reported are preliminary and subject to change.

MORBIDITY AND MORTALITY TRENDS

**Fig. 8. Daily Percent Increase for Atlanta Metro Districts
(Averaged over 7 days)**

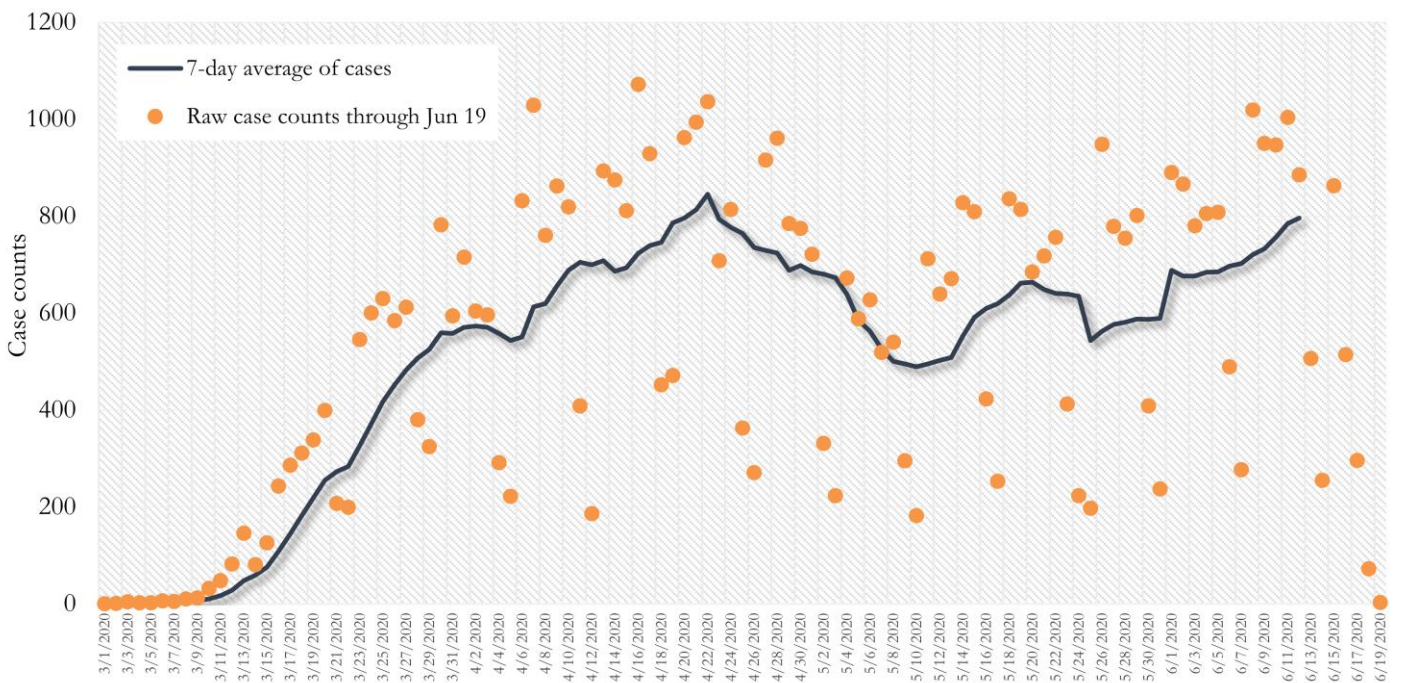


**Fig. 11. New COVID-19 Cases in Fulton County Daily (Averaged over 7 days)
Mar 01, 2020 - Jun 12, 2020**



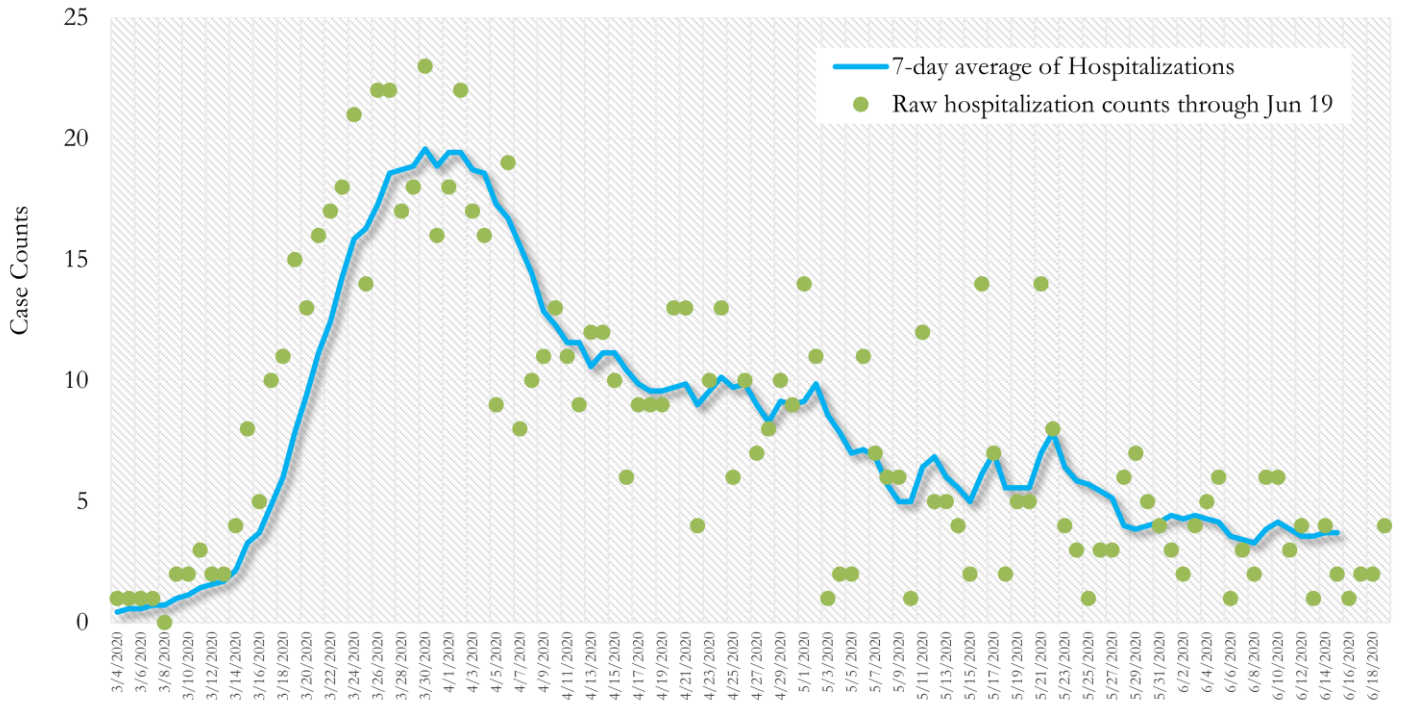
*Date of collection of first positive sample used (report creation date used where sample collection date is missing).

**Fig. 10. New COVID-19 Cases in Georgia State Daily (Averaged over 7 days)
Mar 01, 2020 - Jun 12, 2020**



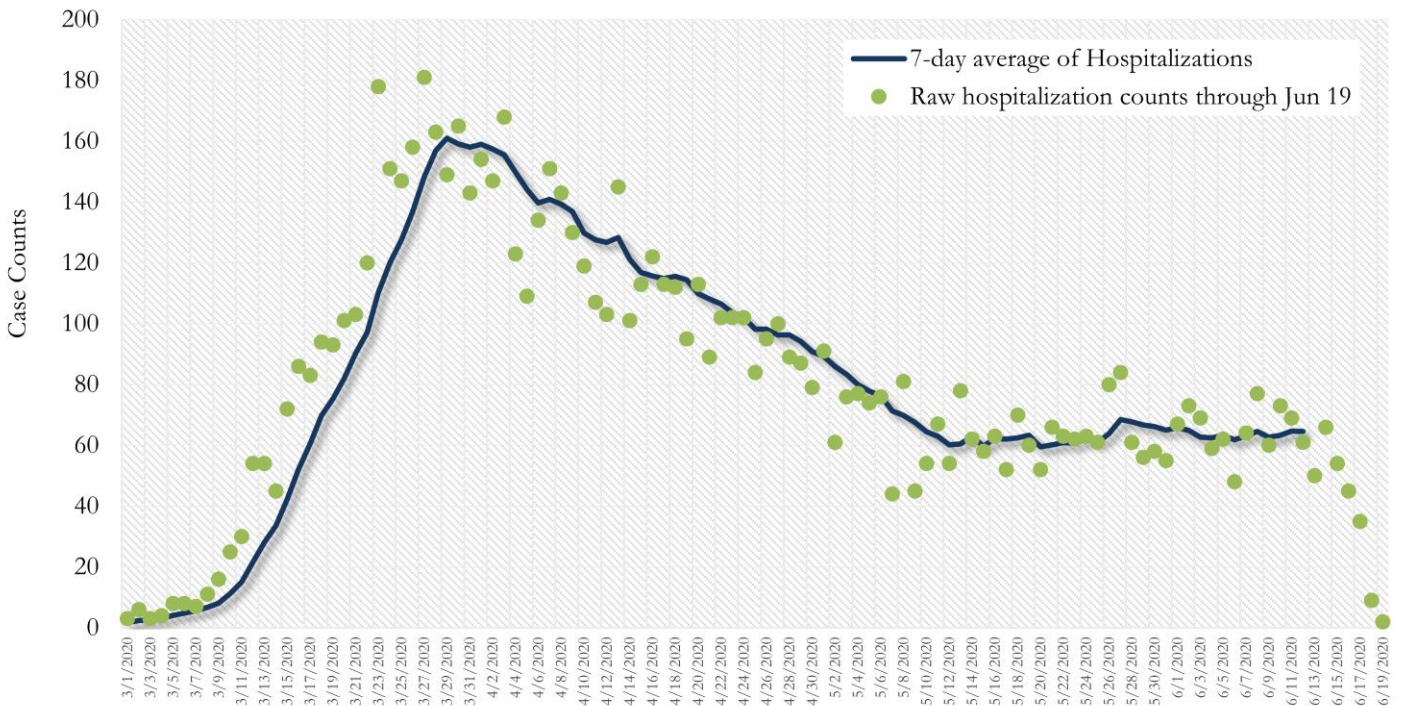
*Date of collection of first positive sample used (report creation date used where sample collection date is missing).

**Fig. 11. COVID-19 Hospitalizations in Fulton County Daily (Averaged over 7 days)
Mar 01, 2020 - Jun 12, 2020**



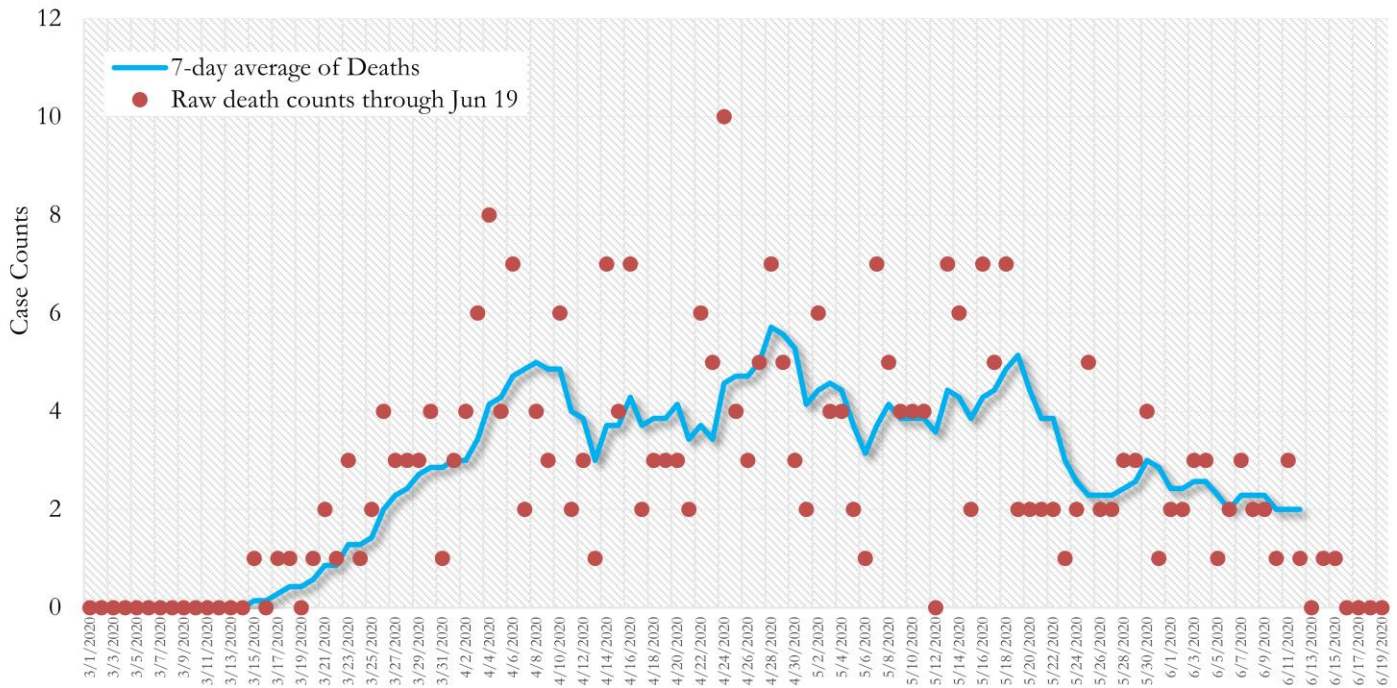
*Date of collection of first positive sample used (report creation date used where sample collection date is missing).

**Fig. 12. COVID-19 Hospitalizations in Georgia State Daily (Averaged over 7 days)
March 01, 2020 - Jun 12, 2020**



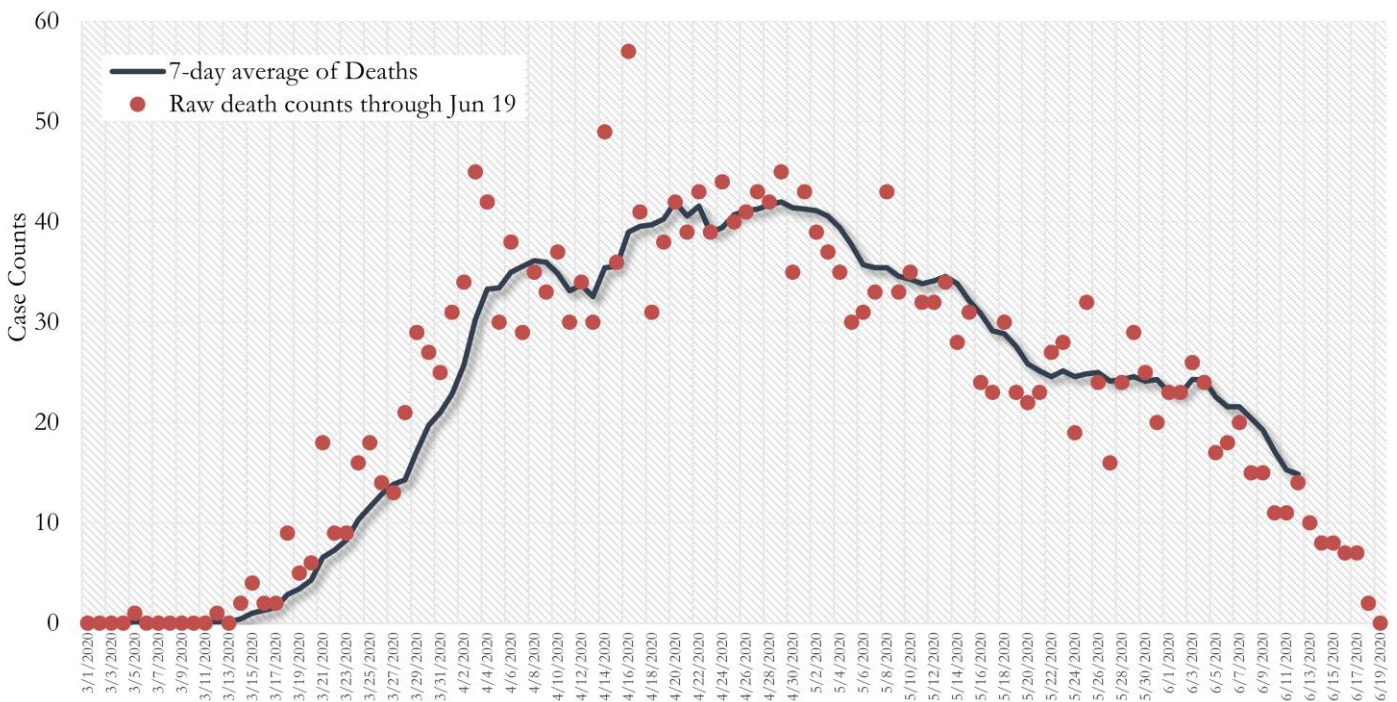
*Date of collection of first positive sample used (report creation date used where sample collection date is missing).

**Fig. 13. COVID-19 Deaths in Fulton County Daily (Averaged over 7 days)
Mar 01, 2020 - Jun 12, 2020**



*Reported date of death used.

**Fig. 14. COVID-19 Deaths in Georgia State Daily (Averaged over 7 days)
Mar 01, 2020 - Jun 12, 2020**

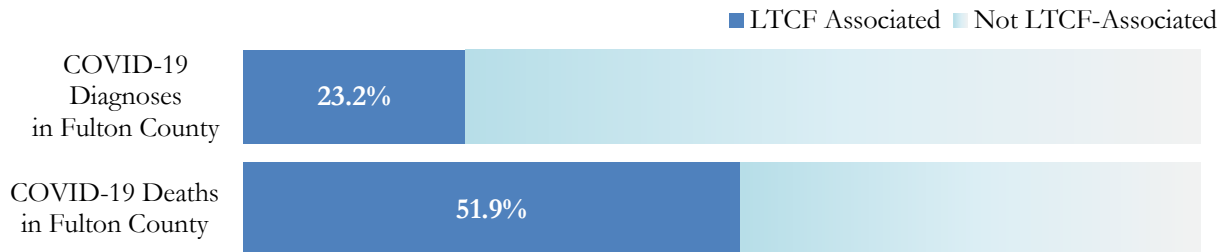


* Reported date of death used.

COVID-19 IN LONG-TERM CARE FACILITIES IN FULTON

Older persons (aged 65 years and older) and persons who live in nursing homes or other long-term care facilities seem to be at higher risk for developing more serious complications from COVID-19. Extra precautions are recommended for individuals within this risk groups – Centers for Disease Control and Prevention (CDC 2020) <https://www.cdc.gov/coronavirus/2019-ncov/need-extra-precautions/people-at-higher-risk.html>

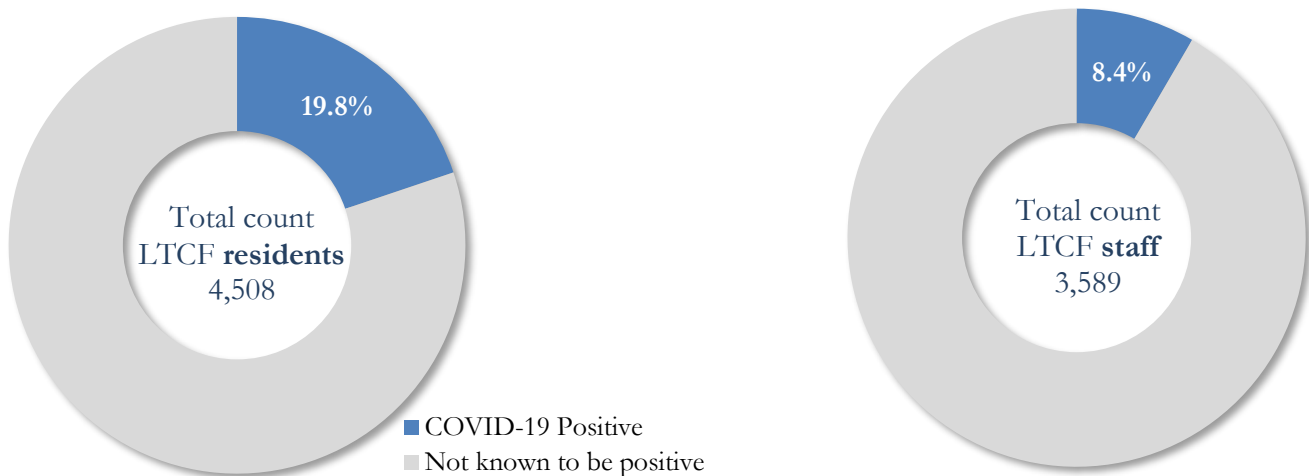
COVID-19 Diagnoses and Deaths in Fulton County Associated with Long-Term Care Facilities (6/17/20)



***LTCF → Long-term Care Facility (Includes residents and Staff) ***

COVID-19 POSITIVITY: COVID-19 testing is currently being provided at various long-term care facilities in Fulton County through the efforts of the Board of Health and the National Guard. See <https://dch.georgia.gov/> for a line listing of COVID-19 cases at all facilities in Georgia.

COVID-19 Positivity at 47 reporting Long-Term Care Facilities (LTCF) in Fulton County (6/17/20)



COVID-19 Cases, Hospitalizations, and Deaths among reporting Long-Term Care Facilities in Fulton County (6/17/20)

	LTCF Residents (n=4,508)			LTCF Staff (n=3,589)		
	Cases	Hospitalizations	Deaths	Cases	Hospitalizations	Deaths
Average (count per fac.) ¹	19	4	3	6	<1	<0.1
Median (count per fac.) ¹	2	2	1	2	0	0
Lowest counts	0	0	0	0	0	0
Highest counts	126	32	23	40	6	1
Total Count	894 (19.8%) ^a	187 (20.9%) ^b	147 (16.4%) ^b	302 (8.4%) ^a	16 (5.3%) ^b	1 (0.3%) ^b

^a Percentage shown reflects proportion of total residents/staff tested who were positive (i.e. COVID-19 Positivity). | ^b Percentages shown are proportions of persons residents/staff diagnosed with COVID-19 who were hospitalized or died after diagnoses.