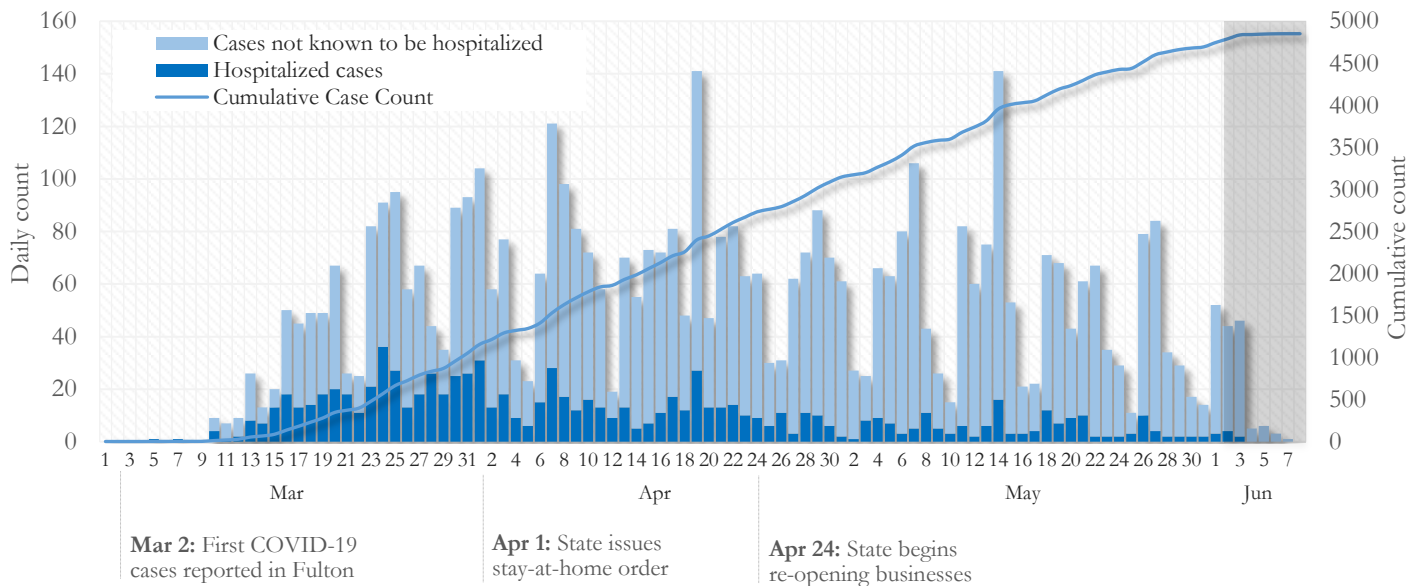


SUMMARY

- As of June 8, 2020, Fulton County has recorded **4,851** cases of the 2019 novel coronavirus (COVID-19) and **253** deaths.
- The central portion of the county (Atlanta metro) accounts for 47% of the cumulative case count while the northern and southern parts of the county together account for 44% of the COVID-19 cumulative case count in the county.
- By city, cumulative COVID-19 diagnoses rates range from 153.0 per 100,000 persons (Johns Creek) to 901.7 per 100,000 persons (Union City).
- Among all persons diagnosed with COVID-19 in Fulton County, 18.9% required hospitalization and 5.2% died.
- Residents and staff of long-term care facilities account for 24% of COVID-19 diagnoses and 69% of COVID-19 deaths in Fulton County (6/05/20).

Daily and Cumulative COVID-19 diagnoses in Fulton County, GA (6/08/20)



*Counts shown reflect the number of confirmed cases as of 9:00am on 6/08/20 using the date of first positive sample collection. Where date of sample collection was not available or missing, the date of report creation in GA SENDSS was used instead. **Note:** All data reported are preliminary and subject to change. Delays in data reporting may cause changes in data counts, particularly in the shaded portion.

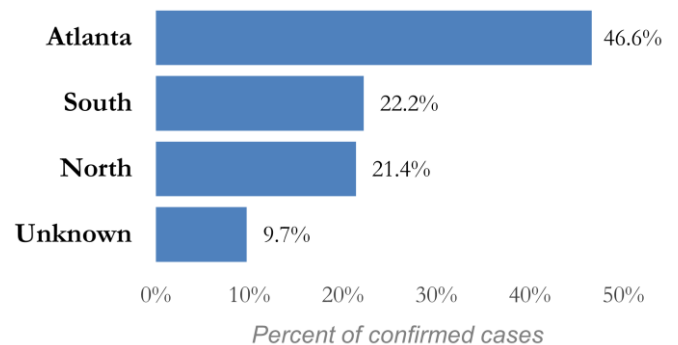
DISTRIBUTION OF COVID-19 DIAGNOSES BY REGION

New cases: 50% of the new COVID-19 cases diagnosed in the past 2 weeks occurred in Atlanta while 23% and 18% occurred in the Northern and Southern regions of the county respectively.

Fulton Region	% Cumulative count	% New cases*
Atlanta	46.6%	50.4%
North ¹	21.4%	23.3%
South ²	22.2%	17.9%
Unincorporated/Unknown	9.7%	8.5%

¹Includes all Fulton County cities north of Atlanta metro (Alpharetta, Milton, Johns Creek, Roswell, Sandy Springs, Mountain Park) | ²Includes all cities south of Atlanta (College Park, Chattahoochee Hills, East Point, Hapeville, Palmetto, South Fulton, Fairburn, and Union City) ***New cases:** Cases diagnosed in the past 2 weeks only (using the date of sample collection).

Distribution of COVID 19 cases by Region (6/08/20)

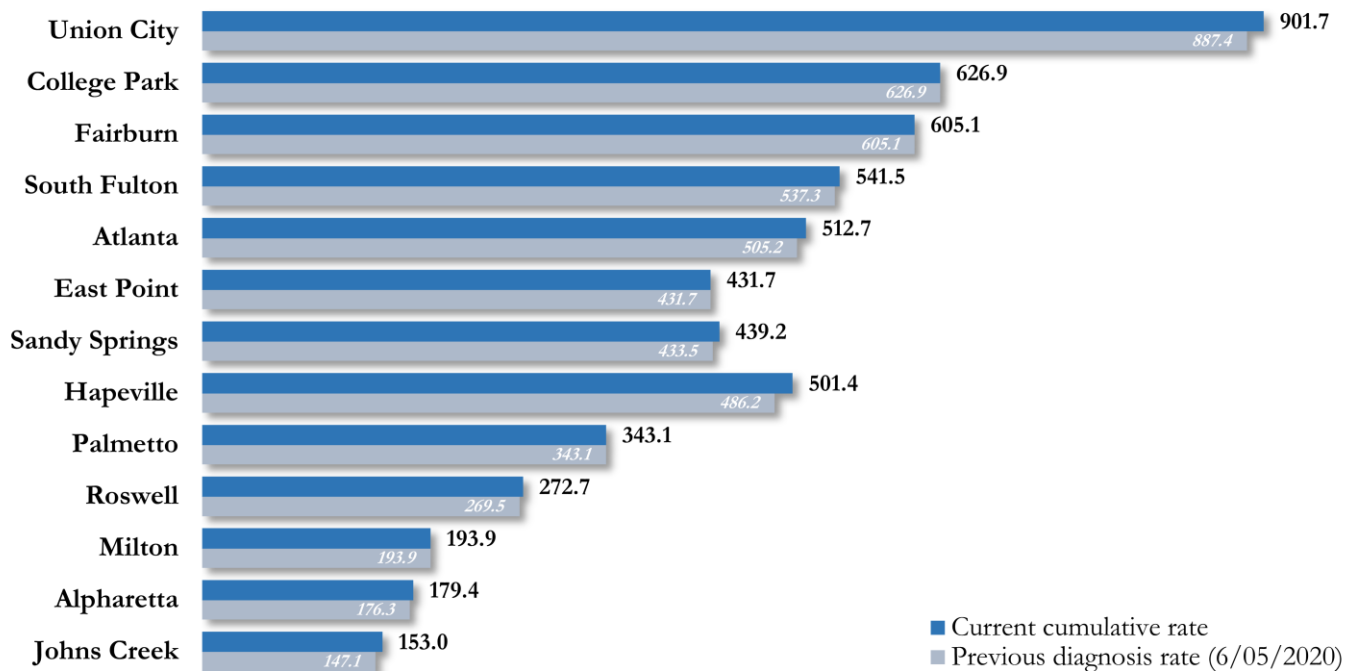


COVID-19 CASE COUNTS AND RATES BY CITY

	Prior Count (6/05/2020)	Current Count (6/08/20)	Percent (County Total)	% Change from prior Count	Cumulative Rate (Per 100,000 pop.)	New Cases Diagnosed in Past 14 Days ¹ (Count)
Atlanta	2229	2262	46.6%	1.5%	512.7	214
South Fulton	511	515	10.6%	0.8%	541.5	34
Sandy Springs	457	463	9.5%	1.3%	439.2	54
Roswell	254	257	5.3%	1.2%	272.7	19
East Point	151	151	3.1%	0.0%	431.7	<10
Johns Creek	123	128	2.6%	4.1%	153.0	12
Union City	186	189	3.9%	1.6%	901.7	15
Alpharetta	114	116	2.4%	1.8%	179.4	<10
Milton	74	74	1.5%	0.0%	193.9	<10
Fairburn	89	89	1.8%	0.0%	605.1	<10
College Park	87	87	1.8%	0.0%	626.9	<10
Palmetto	15	15	0.3%	0.0%	343.1	No new cases
Hapeville	32	33	0.7%	3.1%	501.4	<10
Mountain Park	-	-	0%	-	-	No new cases
Unknown	463	472	9.7%	-	-	-

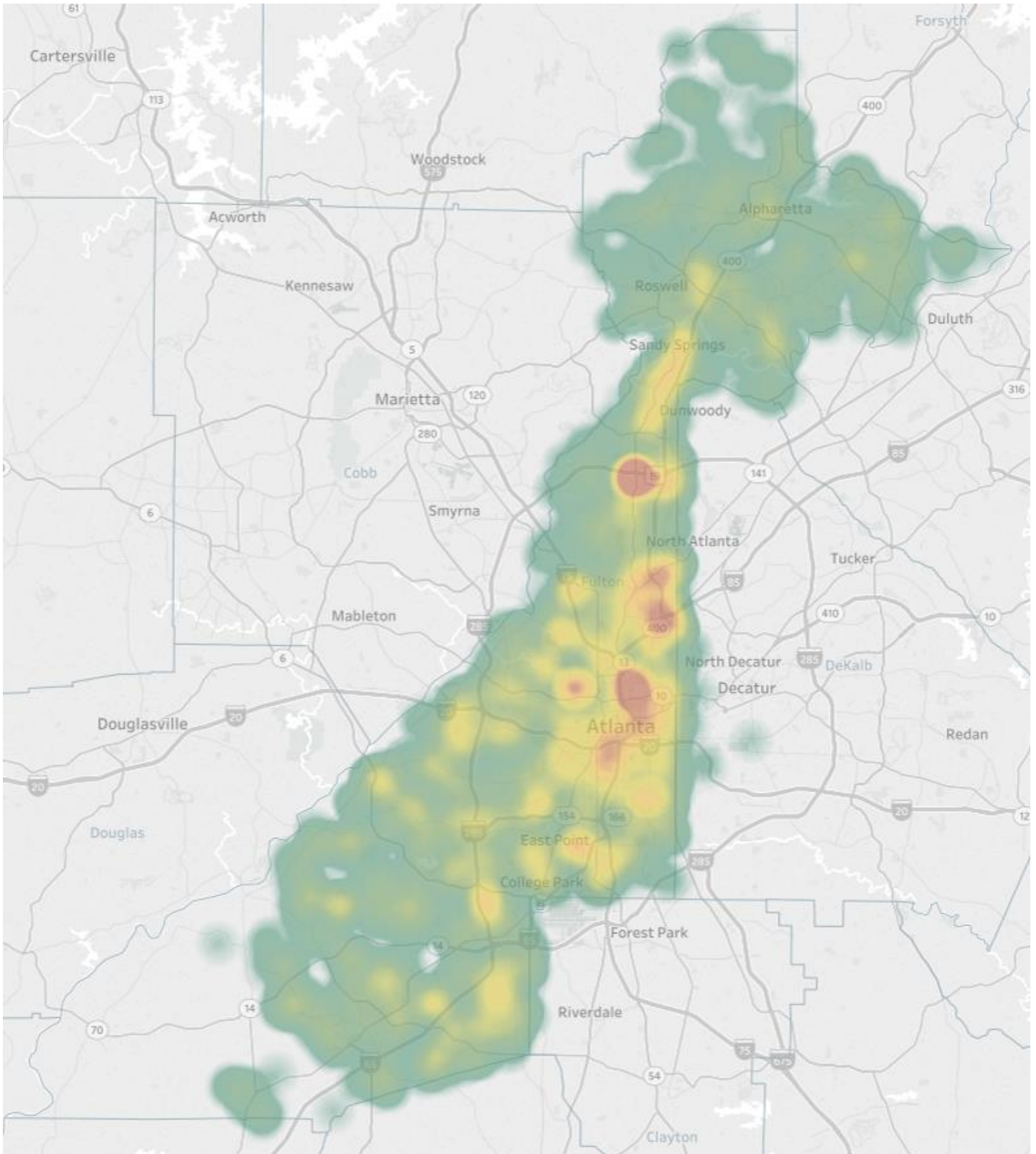
Population estimates from US Census Bureau used to calculate diagnoses rates. ** Data cleaning (either during case interviews or address geo-coding) may lead to reassignment of few cases from one territory to another based on their corrected addresses. These may appear as "decreases" when compared to the previous day's count. These do not reflect errors in the data collection or analysis process but only reflect the minor day-to-day fluctuations in case counts that arise in an evolving public health database like COVID's. **Note:** Sharp increases in territorial COVID case counts often reflect new cases diagnosed at long term care facilities located in those territories during facility-wide /mass screening events. ¹**New cases:** Cases diagnosed in the past 2 weeks only (using the date of sample collection). **All data reported are preliminary and subject to change.**

Fig. 3. COVID-19 Diagnoses Rate in Fulton County by City (6/08/20)



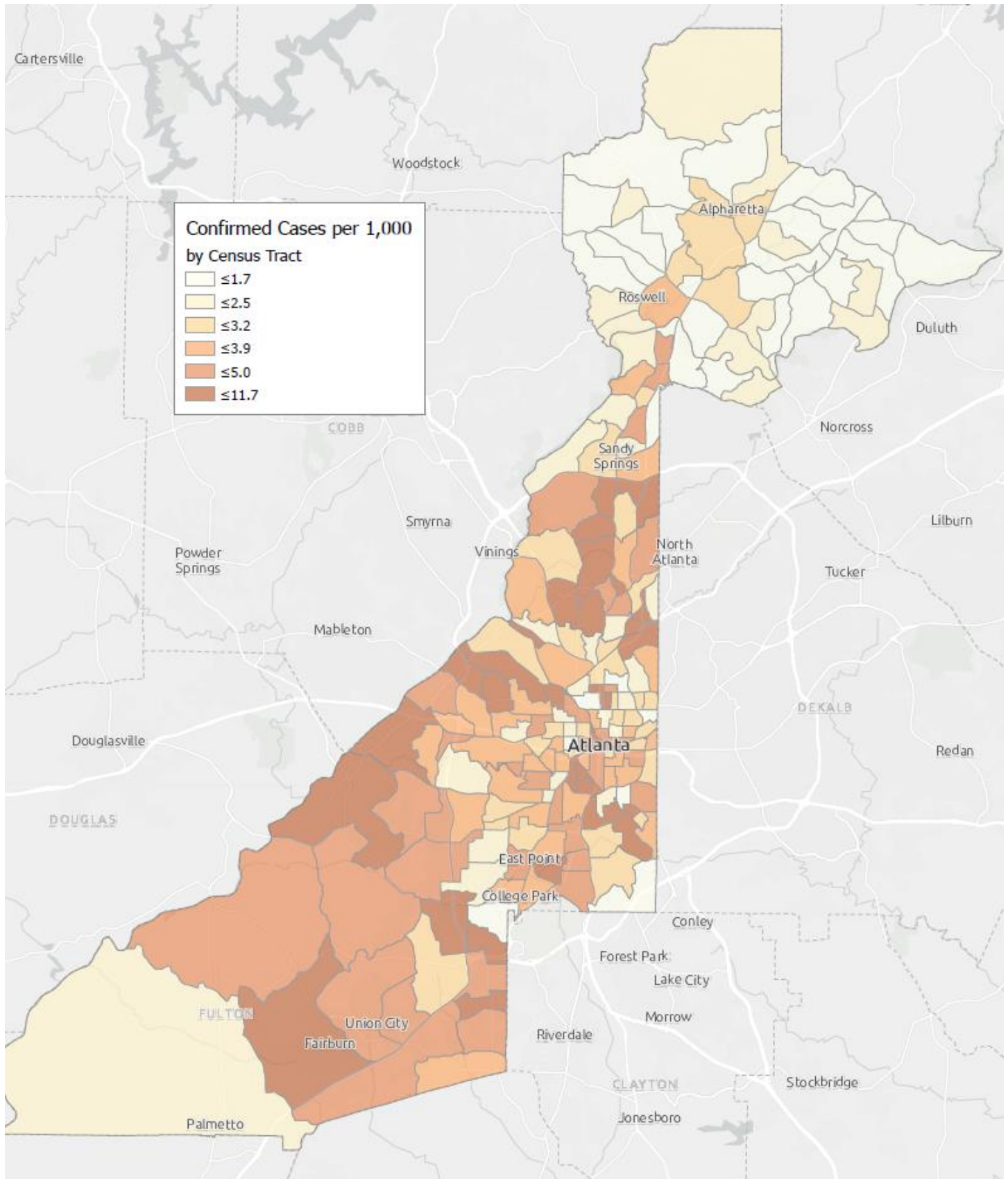
*Rates shown are per 100,000 persons | **Note:** Mass testing in specific locations (e.g. long term care facilities) may cause sharp increases in the cumulative rate of COVID-19 diagnosis in those territories. All data shown are preliminary and are subject to change as testing results get updated.

Fig. 4. Density Map of COVID-19 Cases in Fulton County (6/08/20)



NB. Data used excludes the outbreak-related cases diagnosed at long-term care facilities and reflects the current geographical distribution of COVID19 diagnoses in the general Fulton County community.

Fig. 5. COVID-19 Diagnosis Rates in Fulton County by Census Tract (6/08/2020)



*Rates shown are per 1,000 populations.

NB. Data used excludes the outbreak-related cases diagnosed at long-term care facilities and reflects the current geographical distribution of COVID19 diagnoses in

COVID-19 CASE COUNTS BY ZIP CODE

ZIP code	Prior Count (6/05/2020)	Current Count (6/08/20)	Percent (County Total)	% Change from Prior ZIP-level Count	New Cases Diagnosed in Past 14 Days ¹ (Count)
30331	371	375	7.7%	1.1%	17
30318	298	302	6.2%	1.3%	24
30349	276	279	5.8%	1.1%	22
30213	199	200	4.1%	0.5%	15
30315	151	153	3.2%	1.3%	<10
30344	144	143	2.9%	-0.7%**	<10
30311	132	133	2.7%	0.8%	<10
30342	233	237	4.9%	1.7%	27
30314	189	197	4.1%	4.2%	<10
30310	168	169	3.5%	0.6%	42
30308	80	82	1.7%	2.5%	<10
30022	115	119	2.5%	3.5%	17
30327	108	108	2.2%	<0.1%	<10
30004	104	105	2.2%	1.0%	10
30309	136	138	2.8%	1.5%	<10
30076	93	94	1.9%	1.1%	<10
30291	210	213	4.4%	1.4%	13
30350	110	111	2.3%	0.9%	16
30075	139	141	2.9%	1.4%	<10
30328	113	114	2.4%	0.9%	12
30316	48	49	1.0%	2.1%	<10
30312	220	220	4.5%	<0.1%	<10
30005	48	50	1.0%	4.2%	<10
30305	146	149	3.1%	2.1%	45
30306	44	46	0.9%	4.5%	<10
30324	137	138	2.8%	0.7%	26
30337	82	82	1.7%	<0.1%	<10
30009	52	53	1.1%	1.9%	<10
30313	39	39	0.8%	<0.1%	<10
30326	27	28	0.6%	3.7%	<10
30097	43	43	0.9%	<0.1%	<10
30354	54	55	1.1%	1.9%	10
30303	32	32	0.7%	<0.1%	<10
30339	13	13	0.3%	<0.1%	No new cases
30268	20	20	0.4%	<0.1%	No new cases
30307	19	19	0.4%	<0.1%	<10
30319	29	30	0.6%	3.4%	<10
30336	20	20	0.4%	<0.1%	<10
30296	10	11	0.2%	10.0%	No new cases
30363	<10	<10	0.2%	-	<10
30301	<10	<10	<0.1%	-	No new cases
30345	<10	<10	0.2%	-	<10
31131	<10	<10	<0.1%	-	No new cases
30023	<10	<10	<0.1%	-	No new cases
30080	<10	<10	<0.1%	-	No new cases
30135	<10	<10	<0.1%	-	No new cases
30138	<10	<10	<0.1%	-	No new cases
30139	-	-	-	-	No new cases
30321	<10	<10	<0.1%	-	<10
30340	<10	<10	0.2%	-	<10
30341	11	13	0.3%	18.2%	<10
30358	<10	<10	<0.1%	-	No new cases

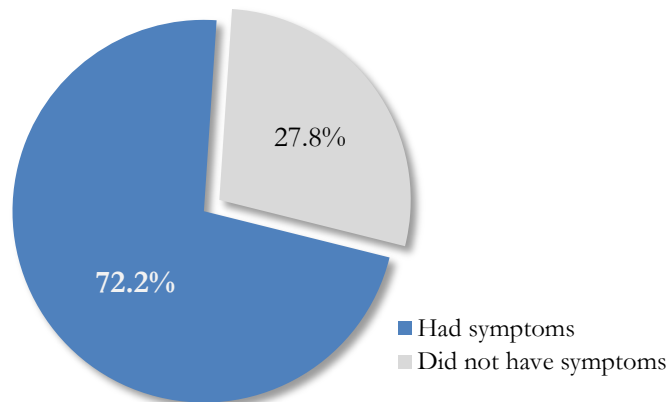
30374	19	19	0.4%	<0.1%	<10
30606	<10	<10	<0.1%	-	No new cases
31150	<10	<10	<0.1%	-	No new cases
30024	<10	<10	<0.1%	-	No new cases
30098	-	-	-	-	No new cases
30334	<10	<10	<0.1%	-	<10
30338	<10	<10	<0.1%	-	<10
Unknown	254	259	5.3%	-	20

** Data cleaning (either during case interviews or address geo-coding) may lead to reassignment of few cases from one territory to another based on their corrected addresses. These may appear as "decreases" when compared to the previous day's count. These do not reflect errors in the data collection or analysis process but only reflect the minor day-to-day fluctuations in case counts that arise in an evolving public health database like COVID's. **Note:** Sharp increases in territorial COVID case counts often reflect new cases diagnosed at long term care facilities located in those territories during facility-wide/mass screening events. **New cases:** Cases diagnosed in the past 2 weeks only (using the date of sample collection). **All data reported are preliminary and subject to change.**

REPORTING SYMPTOMS AMONG PERSONS DIAGNOSED WITH COVID-19 IN FULTON

People with COVID-19 have reported a wide range of symptoms ranging from mild symptoms to severe illness. Symptoms may appear 2-14 days after exposure to the virus. Symptoms reported include: cough, shortness of breath/difficulty breathing, fever, chills, repeated shaking with chills, muscle pain, headache, sore throat, new loss of taste or smell – Centers for Disease Control and Prevention (CDC)
<https://www.cdc.gov/coronavirus/2019-ncov/symptoms-testing/symptoms.html>

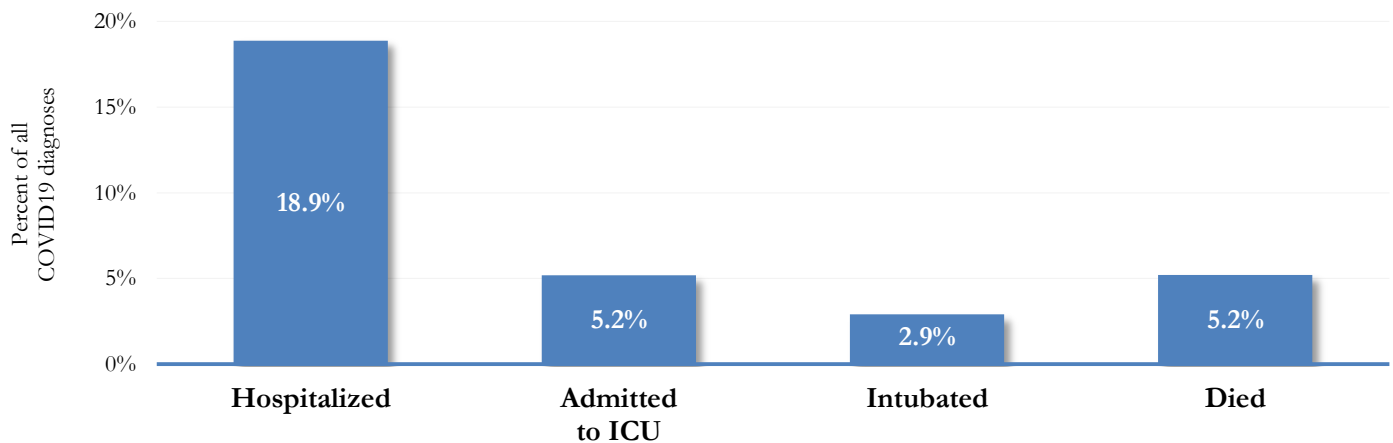
Fig. 6. Proportion reporting Symptoms in Fulton County (6/08/20)



COVID-19 cases who have been case interviewed or had medical charts reviewed as at 6/08/20 only

COVID-19 HOSPITALIZATIONS, ICU ADMISSIONS AND DEATHS IN FULTON

Fig. 7. Hospitalizations, ICU Admissions and Deaths among COVID-19 Diagnoses in Fulton County (6/08/20)



DEMOGRAPHIC DISTRIBUTIONS – COVID 19 DIAGNOSES AND DEATHS IN FULTON

Distribution of COVID-19 diagnoses in Fulton County by Fulton Region – 6/08/20

	North Fulton Cities ¹ Count (%)	Atlanta Count (%)	South Fulton Cities ² Count (%)	Unknown City Count (%)	All Fulton Count (%)
Total COVID-19 cases	1038	2262	1079	472	4851
Gender: Female	501 (48.3%)	1107 (48.9%)	609 (56.4%)	254 (53.8%)	2471 (50.9%)
Male	533 (51.3%)	1125 (49.7%)	456 (42.3%)	211 (44.7%)	2325 (47.9%)
Unknown	<10	30 (1.3%)	14 (1.3%)	<10	55 (1.1%)
Age: <15	25 (2.4%)	22 (1.0%)	13 (1.2%)	12 (2.5%)	72 (1.5%)
15-24	116 (11.2%)	147 (6.5%)	68 (6.3%)	29 (6.1%)	360 (7.4%)
25-34	155 (14.9%)	363 (16.0%)	121 (11.2%)	93 (19.7%)	732 (15.1%)
35-44	183 (17.6%)	336 (14.9%)	159 (14.7%)	76 (16.1%)	754 (15.5%)
45-54	188 (18.1%)	320 (14.1%)	193 (17.9%)	76 (16.1%)	777 (16.0%)
55-64	166 (16.0%)	339 (15.0%)	200 (18.5%)	66 (14.0%)	771 (15.9%)
65-74	103 (9.9%)	342 (15.1%)	154 (14.3%)	34 (7.2%)	633 (13.0%)
≥75	100 (9.6%)	376 (16.6%)	169 (15.7%)	81 (17.2%)	726 (15.0%)
Unknown	<10	17 (0.8%)	<10	<10	26 (0.5%)
Race: Asian, NH	47 (4.5%)	21 (0.9%)	<10	12 (2.5%)	82 (1.7%)
Black, NH	143 (13.8%)	1190 (52.6%)	767 (71.1%)	179 (37.9%)	2279 (47.0%)
White, NH	352 (33.9%)	357 (15.8%)	78 (7.2%)	78 (16.5%)	865 (17.8%)
Hispanic	167 (16.1%)	95 (4.2%)	44 (4.1%)	41 (8.7%)	347 (7.2%)
Other, NH	30 (2.9%)	40 (1.8%)	13 (1.2%)	15 (3.2%)	98 (2.0%)
Unknown	299 (28.8%)	559 (24.7%)	175 (16.2%)	147 (31.1%)	1180 (24.3%)

¹Includes all Fulton County cities north of Atlanta metro (Alpharetta, Milton, Johns Creek, Roswell, Sandy Springs, Mountain Park) ²Includes all cities south of Atlanta (College Park, Chattahoochee Hills, East Point, Hapeville, Palmetto, South Fulton, Fairburn, Union City). **Note:** All data reported are preliminary and subject to change.

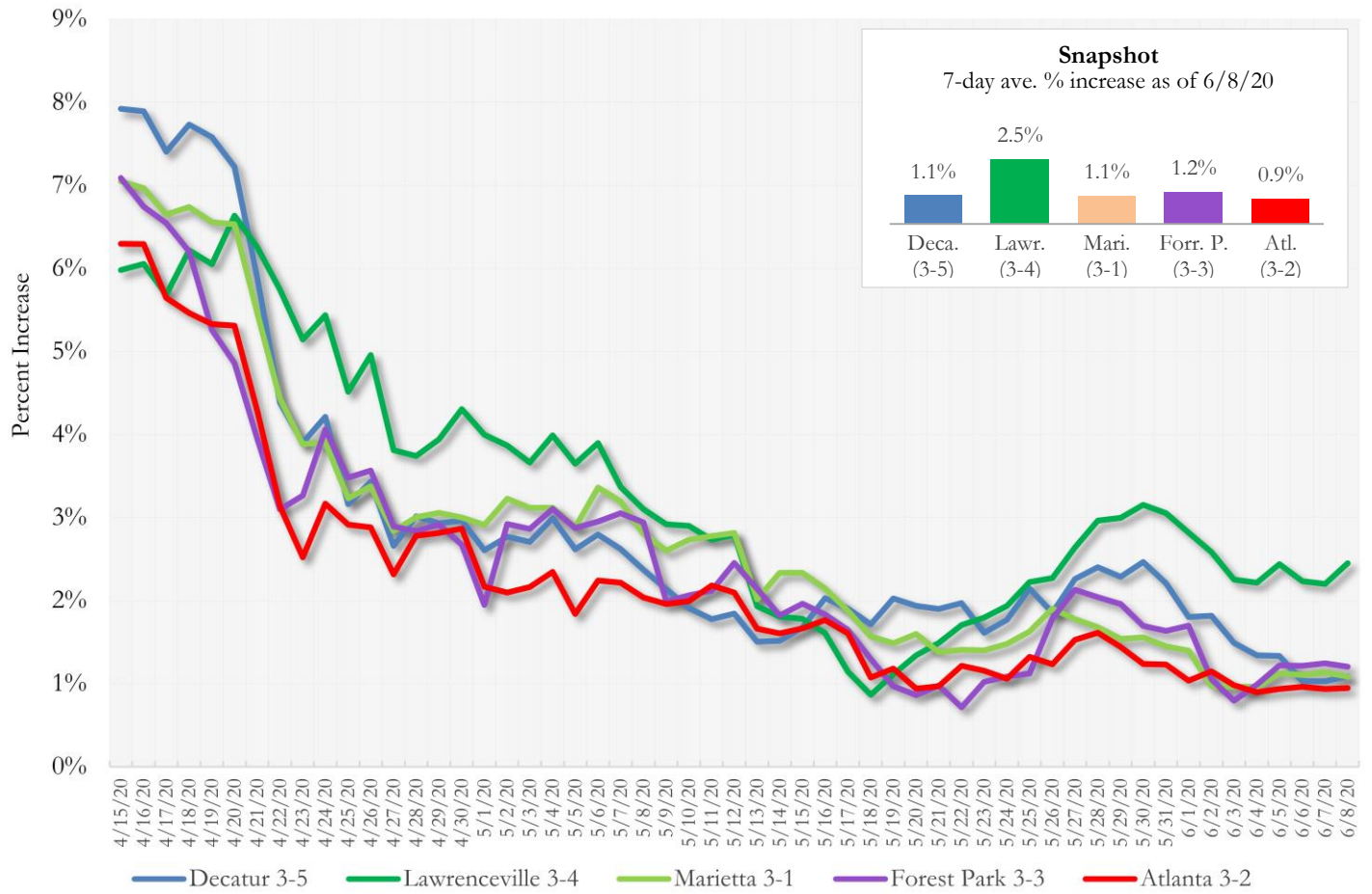
Distribution of COVID-19 Deaths in Fulton County by Fulton Region – 6/08/20

	North Fulton Cities ¹ Count (%)	Atlanta Count (%)	South Fulton Cities ² Count (%)	Unknown City Count (%)	All Fulton Count (%)
Total COVID-19 deaths	32	117	81	23	253
Gender: Female	<10	45 (38.5%)	43 (53.1%)	15 (65.2%)	111 (43.9%)
Male	24 (75.0%)	72 (61.5%)	38 (46.9%)	<10	142 (56.1%)
Unknown	0	0	0	0	0
Age: <65	<10	20 (17.1%)	23 (28.4%)	<10	50 (19.8%)
65-74	<10	30 (25.6%)	19 (23.5%)	<10	55 (21.7%)
75-84	10 (31.3%)	31 (26.5%)	17 (21.0%)	<10	64 (25.3%)
≥85	13 (40.6%)	36 (30.8%)	22 (27.2%)	13 (56.5%)	84 (33.2%)
Unknown	0	0	0	0	0
Race: Asian, NH	0	<10	0	0	<10
Black, NH	<10	99 (84.6%)	71 (87.7%)	11 (47.8%)	187 (73.9%)
White, NH	24 (75.0%)	12 (10.3%)	<10	11 (47.8%)	54 (21.3%)
Hispanic	<10	<10	<10	0	<10
Other, NH	0	<10	0	0	<10
Unknown	0	<10	<10	<10	<10

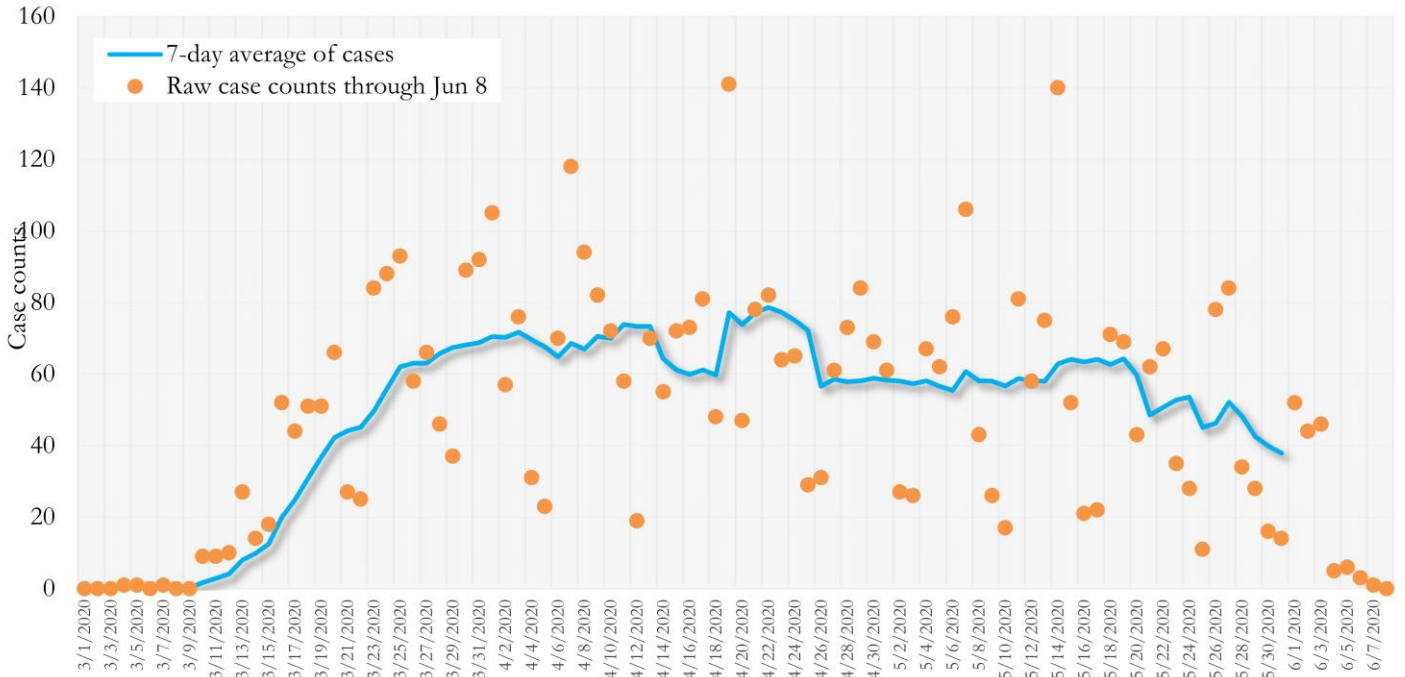
¹Includes all Fulton County cities north of Atlanta metro (Alpharetta, Milton, Johns Creek, Roswell, Sandy Springs, Mountain Park) ²Includes all cities south of Atlanta (College Park, Chattahoochee Hills, East Point, Hapeville, Palmetto, South Fulton, Fairburn, Union City). **Note:** All data reported are preliminary and subject to change.

MORBIDITY AND MORTALITY TRENDS

**Fig. 8. Daily Percent Increase for Atlanta Metro Districts
(Averaged over 7 days)**

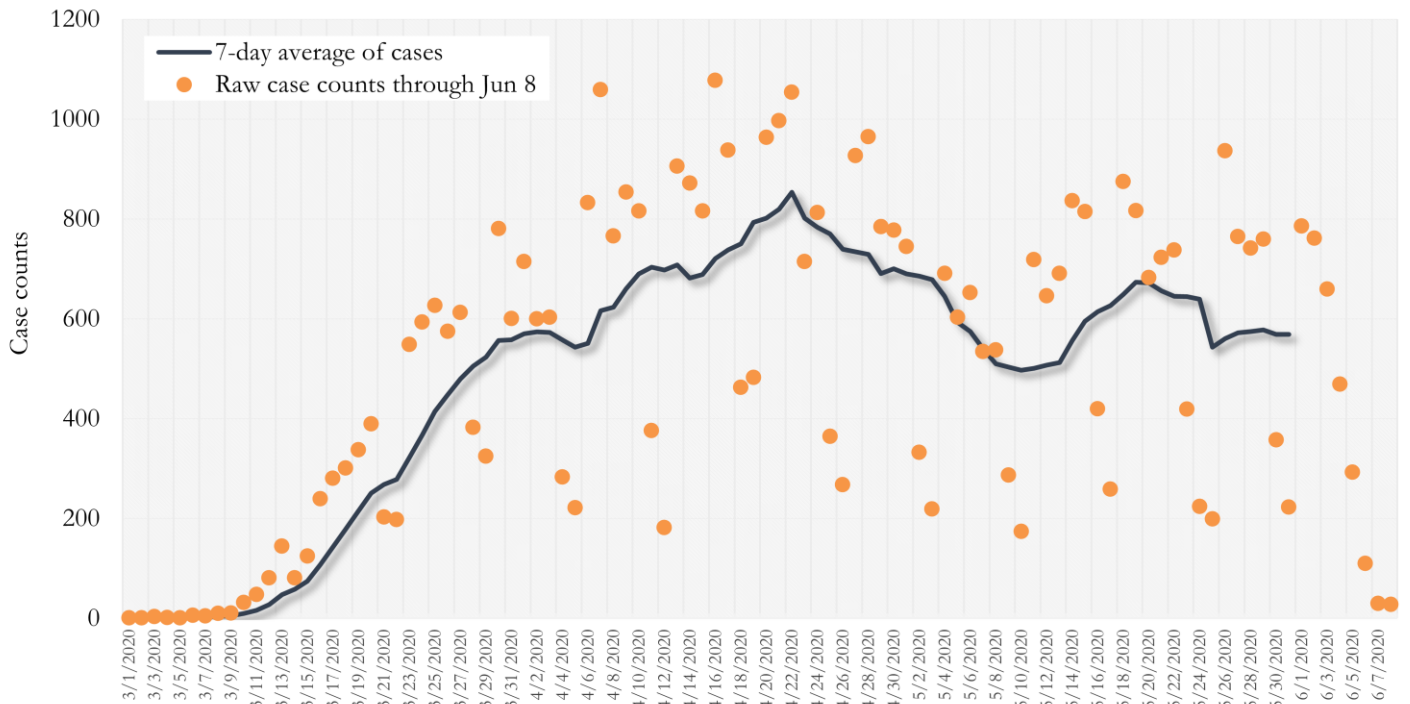


**Fig. 11. New COVID-19 Cases in Fulton County Daily (Averaged over 7 days)
Mar 01, 2020 - May 31, 2020**



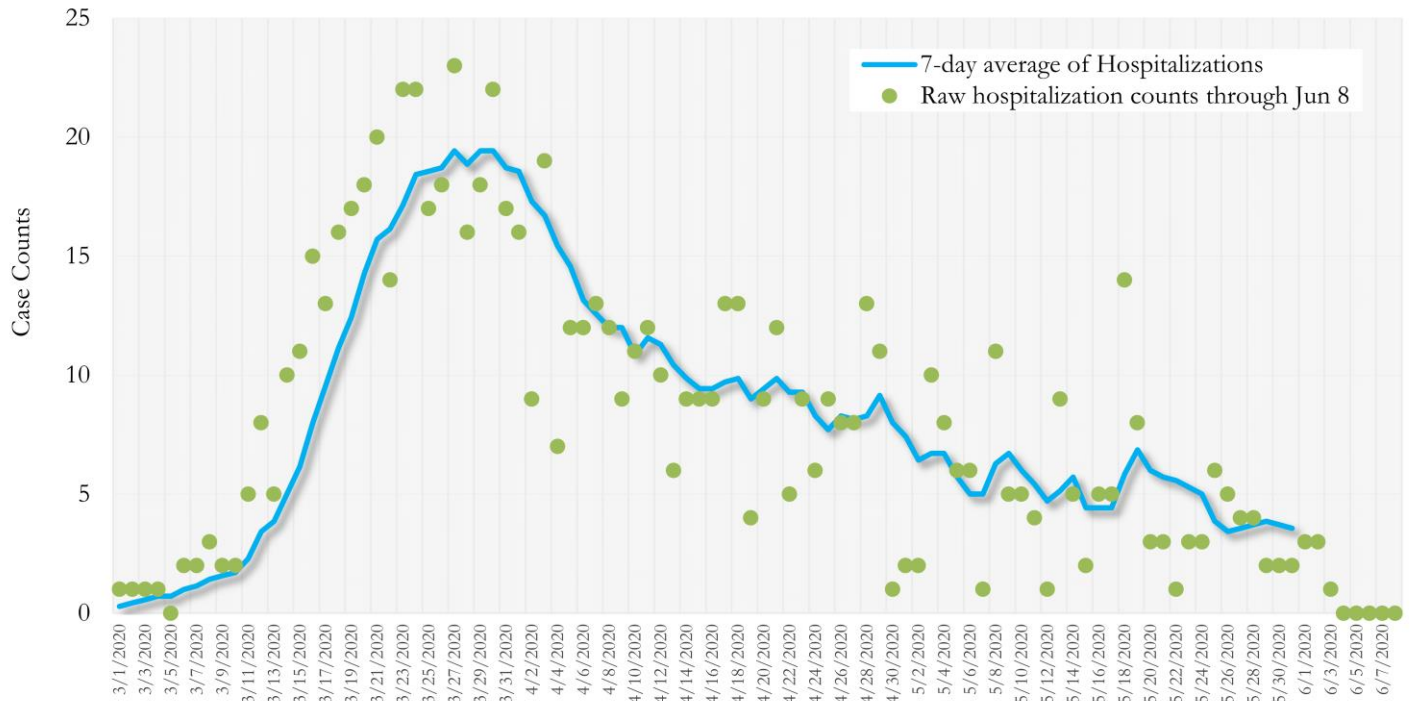
*Date of collection of first positive sample used (report creation date used where sample collection date is missing).

**Fig. 10. New COVID-19 Cases in Georgia State Daily (Averaged over 7 days)
Mar 01, 2020 - May 31, 2020**



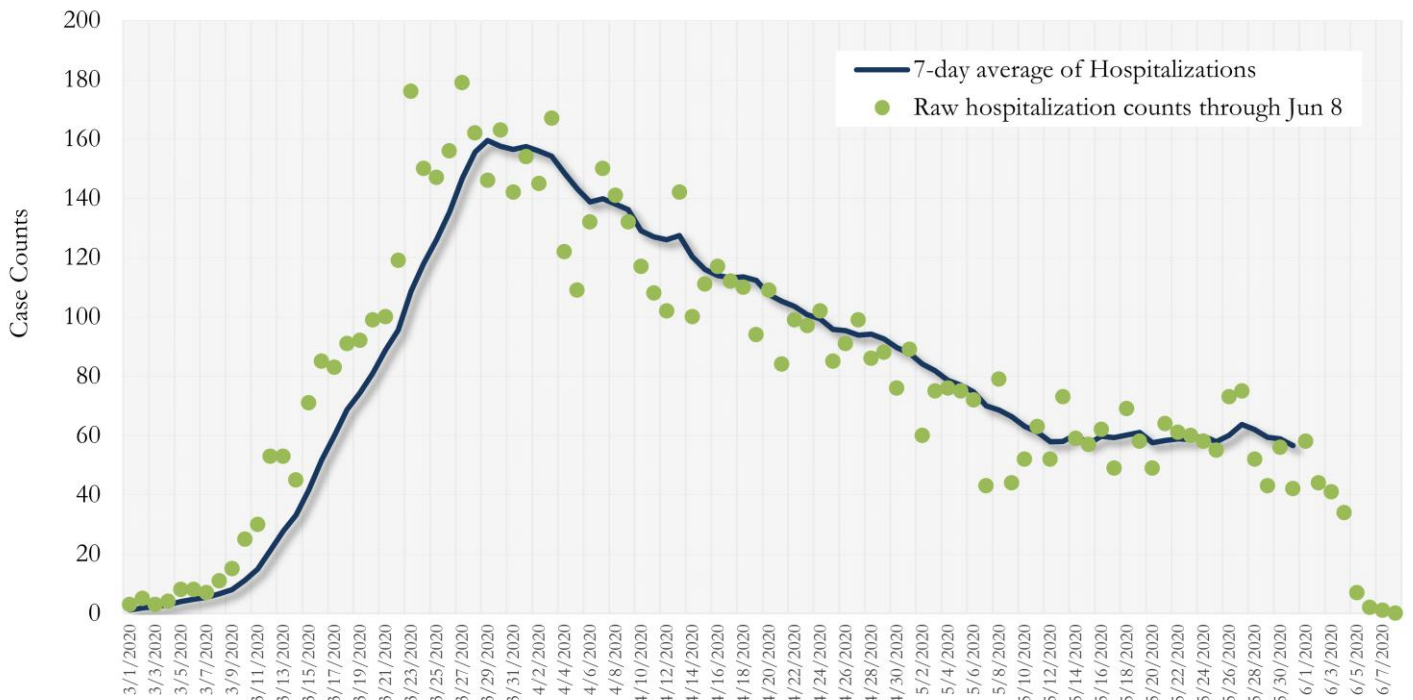
*Date of collection of first positive sample used (report creation date used where sample collection date is missing).

**Fig. 11. COVID-19 Hospitalizations in Fulton County Daily (Averaged over 7 days)
Mar 01, 2020 - May 31, 2020**



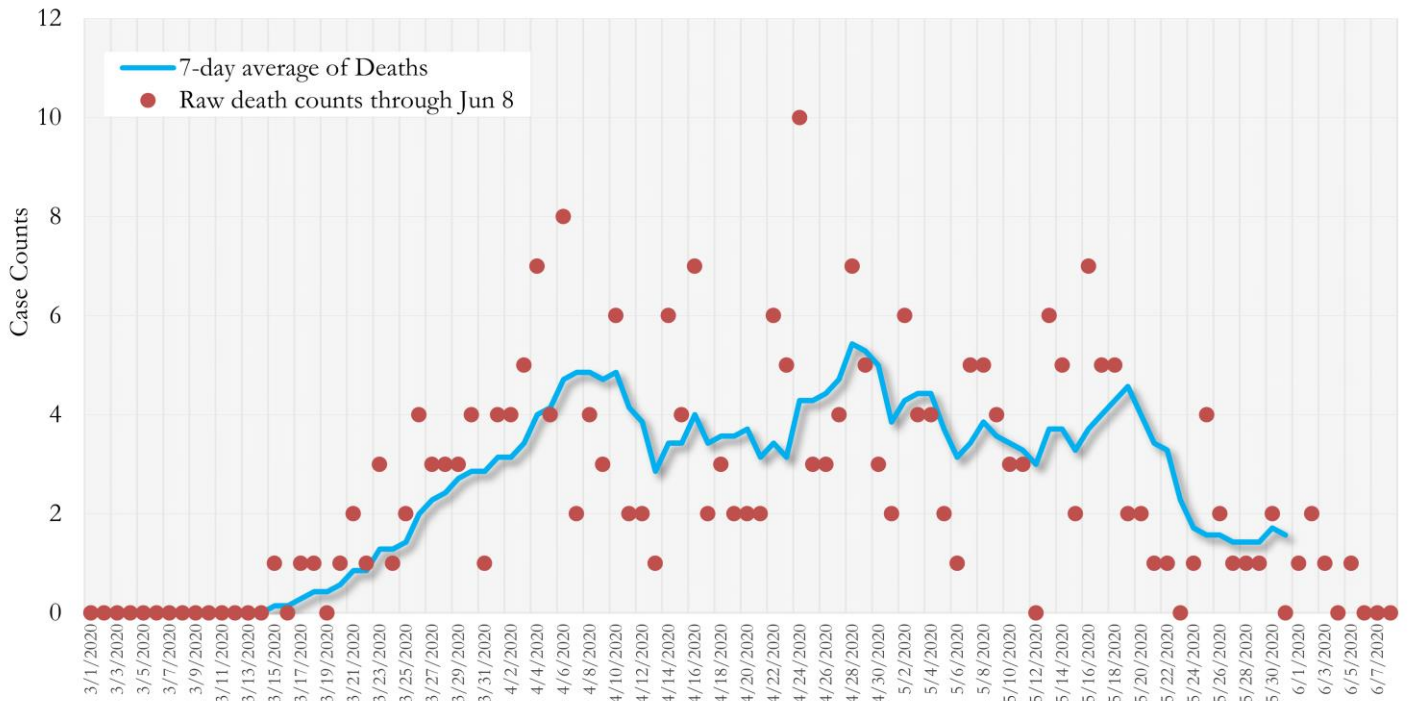
*Date of collection of first positive sample used (report creation date used where sample collection date is missing).

**Fig. 12. COVID-19 Hospitalizations in Georgia State Daily (Averaged over 7 days)
Mar 01, 2020 - May 31, 2020**



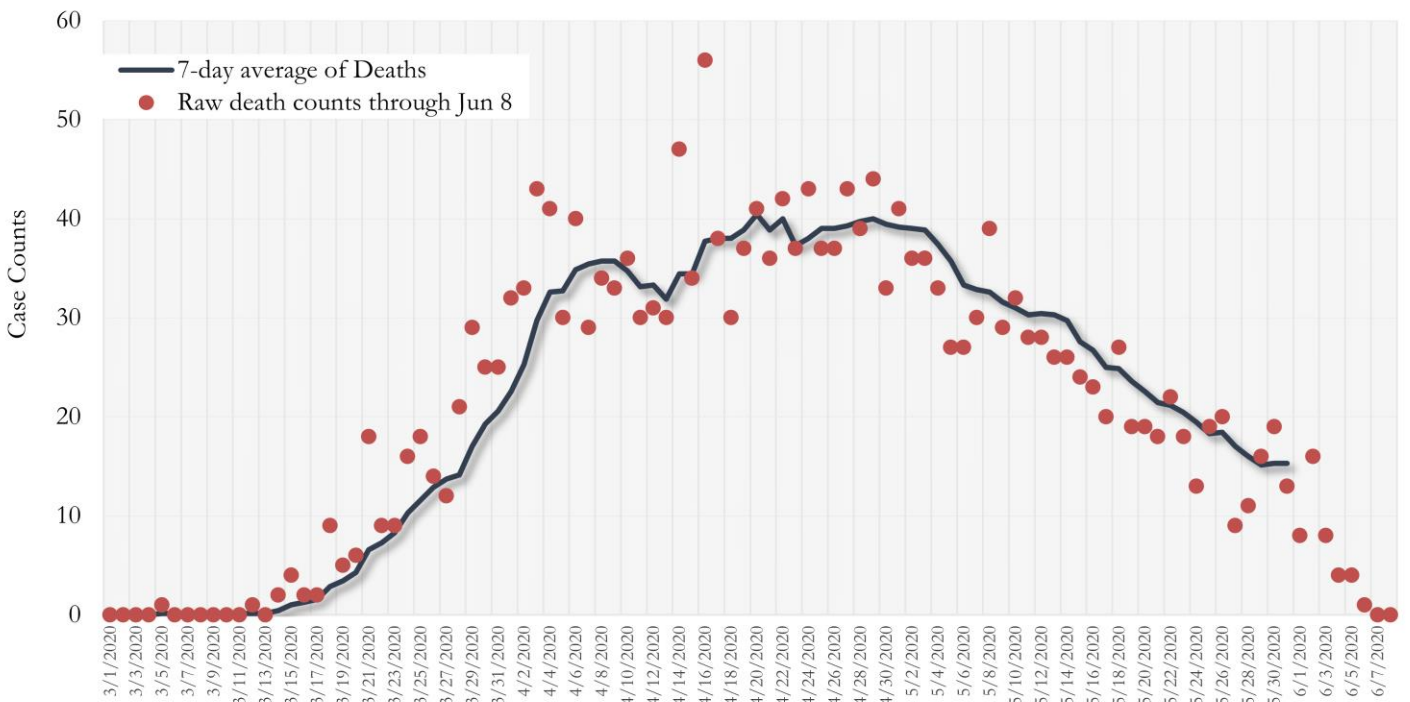
*Date of collection of first positive sample used (report creation date used where sample collection date is missing).

**Fig. 13. COVID-19 Deaths in Fulton County Daily (Averaged over 7 days)
Mar 01, 2020 - May 31, 2020**



*Reported date of death used.

**Fig. 14. COVID-19 Deaths in Georgia State Daily (Averaged over 7 days)
Mar 01, 2020 - May 31, 2020**

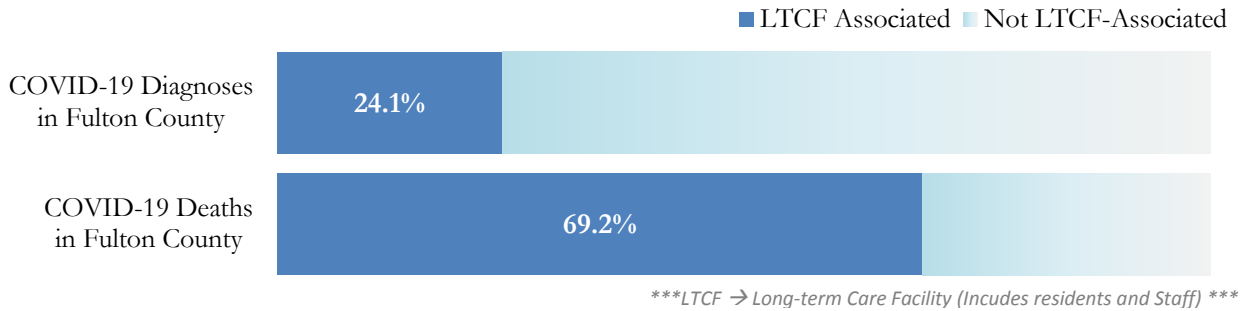


* Reported date of death used.

COVID-19 IN LONG-TERM CARE FACILITIES IN FULTON

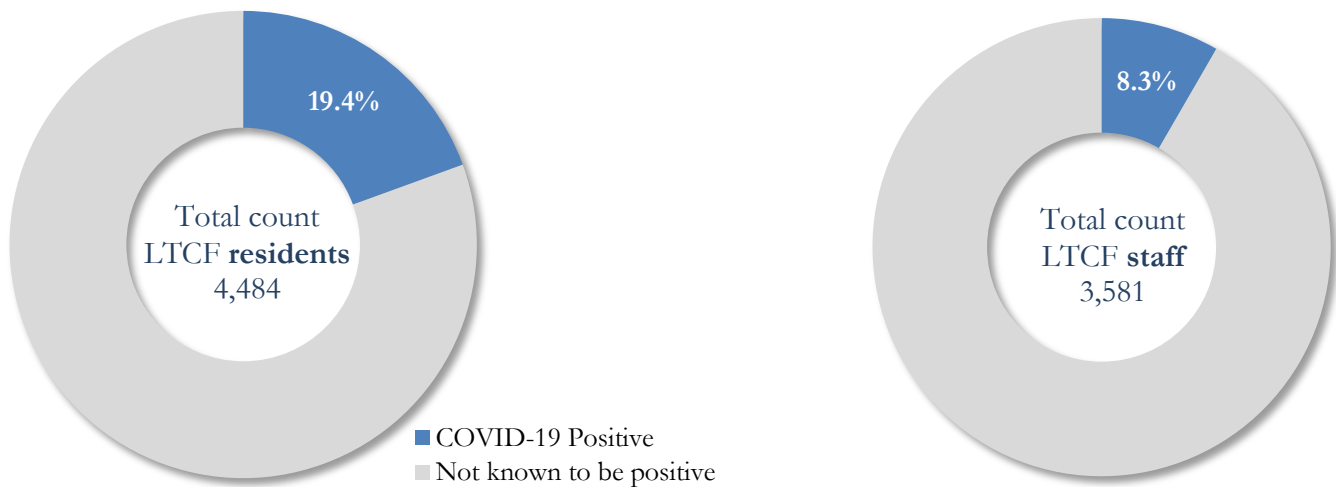
Older persons (aged 65 years and older) and persons who live in nursing homes or other long-term care facilities seem to be at higher risk for developing more serious complications from COVID-19. Extra precautions are recommended for individuals within this risk groups – Centers for Disease Control and Prevention (CDC 2020) <https://www.cdc.gov/coronavirus/2019-ncov/need-extra-precautions/people-at-higher-risk.html>

COVID-19 Diagnoses and Deaths in Fulton County Associated with Long-Term Care Facilities (6/08/20)



COVID-19 POSITIVITY: COVID-19 testing is currently being provided at various long-term care facilities in Fulton County through the efforts of the Board of Health and the National Guard. See <https://dch.georgia.gov/> for a line listing of COVID-19 cases at all facilities in Georgia.

COVID-19 Positivity at 45 reporting Long-Term Care Facilities (LTCF) in Fulton County (6/08/20)



COVID-19 Cases, Hospitalizations, and Deaths among reporting Long-Term Care Facilities in Fulton County (6/08/20)

	LTCF Residents (n=4,484)			LTCF Staff (n=3,581)		
	Cases	Hospitalizations	Deaths	Cases	Hospitalizations	Deaths
Average (count per fac.) ¹	20	4	3	7	<1	<0.1
Median (count per fac.) ¹	2	2	2	2	0	0
Lowest counts	0	0	0	0	0	0
Highest counts	126	32	23	40	6	1
Total Count	872 (18.4%)^a	173 (19.6%)^b	145 (16.6%)^b	299 (8.3%)^a	16 (5.4%)^b	1 (0.3%)^b

^a Percentage shown reflects proportion of total residents/staff tested who were positive (i.e. COVID-19 Positivity). | ^b Percentages shown are proportions of persons residents/staff diagnosed with COVID-19 who were hospitalized or died after diagnoses.