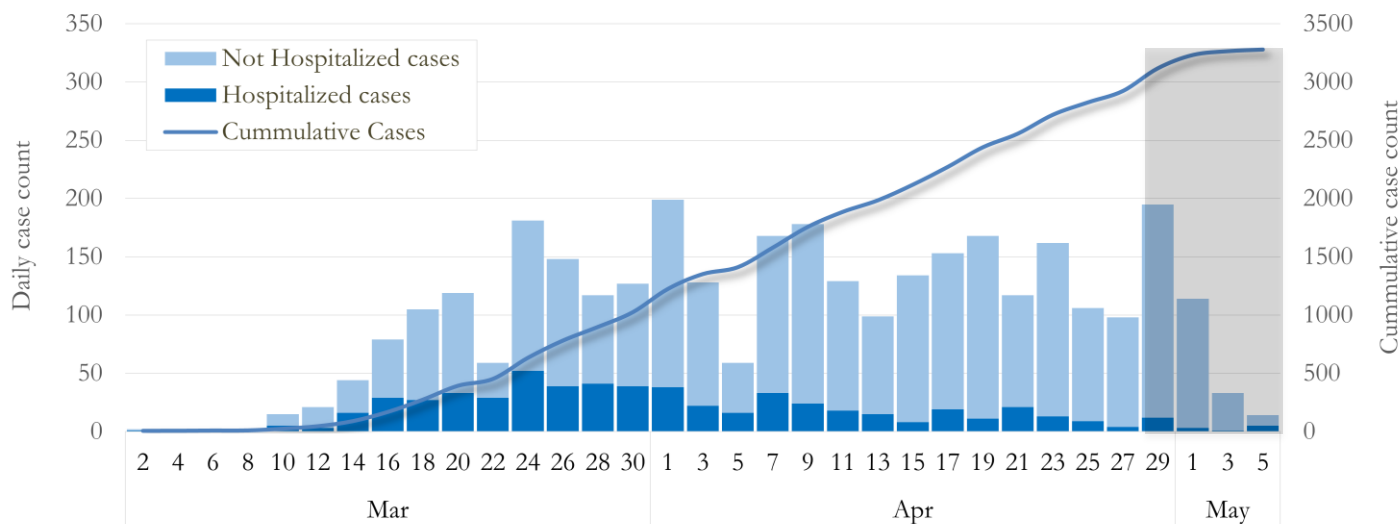


SUMMARY

- As of May 6, 2020, Fulton County has recorded **3,279** cases of the 2019 novel coronavirus (COVID-19) and **130** deaths.
- The central portion of the county (Atlanta metro) accounted for 46% of these diagnoses while northern and southern parts of the county together accounted for 41% of the cases.
- By city, COVID-19 diagnoses rates have ranged from 120.6 (per 100,000 persons) to 462.8
- Among persons diagnosed with COVID-19, 18% have needed hospitalization and 4.0% have died.

Figure 1. Daily and Cummulative COVID-19 diagnoses in Fulton County, GA (5/06/20)



*Counts shown reflect the number of cases diagnosed as at 5/6/20 using the date of first positive sample collection. Where date of sample collection was not available or missing, the date of report creation in GA SENDSS was used instead.

**Note: All data reported are preliminary and subject to change. Delays in data reporting may cause changes in data counts, particularly in the shaded portion.

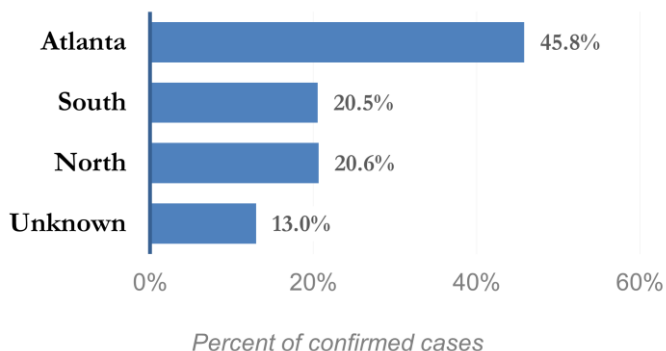
DISTRIBUTION OF COVID-19 DIAGNOSES BY REGION

Fulton Region	% of total cases in Fulton county
Atlanta	45.8%
North ¹	20.6%
South ²	20.5%
Unincorporated/Unknown	13.0%

¹Includes all Fulton County cities north of Atlanta metro (Alpharetta, Milton, Johns Creek, Roswell, Sandy Springs, Mountain Park)

²Includes all cities south of Atlanta (College Park, Chattahoochee Hills, East Point, Hapeville, Palmetto, South Fulton, Fairburn, Union City)

Figure 2. Distribution by Region (5/06/20)

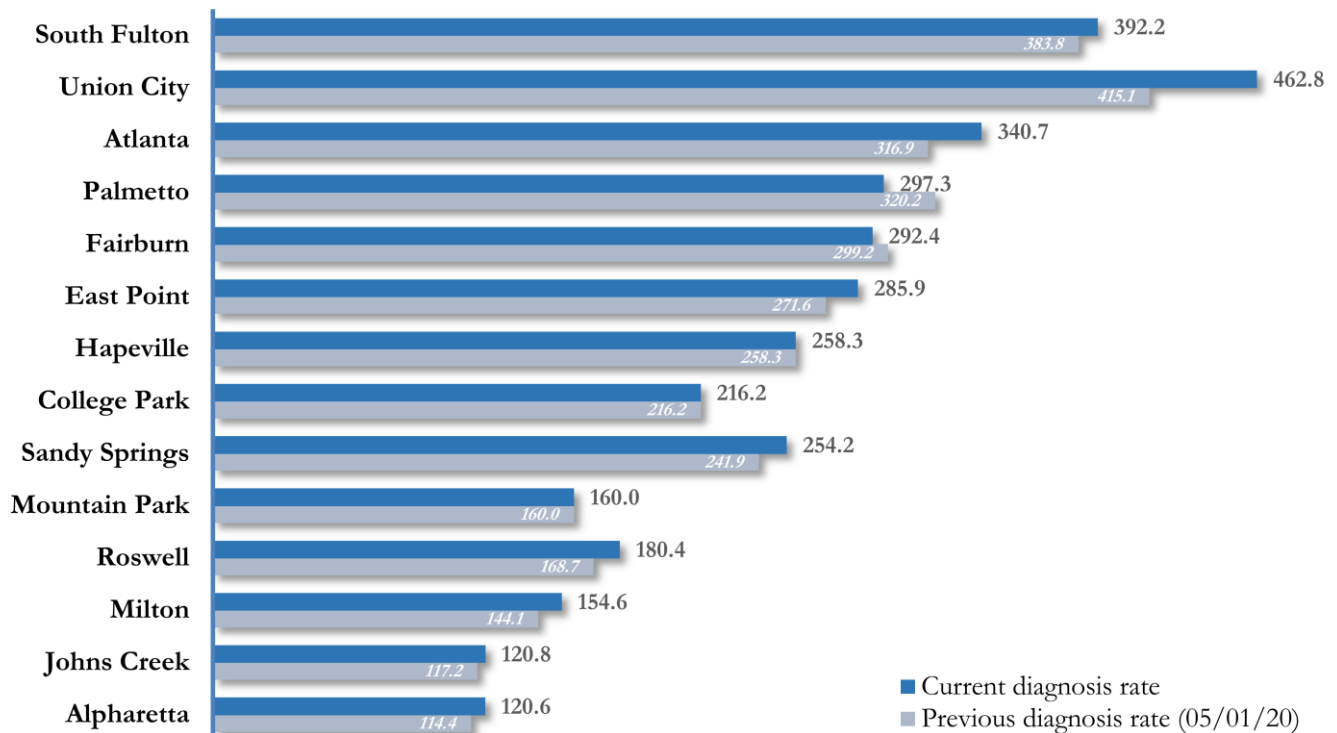


COVID-19 CASE COUNTS AND RATES BY CITY

	Previous Count (5/04/2020)	Current Count (5/06/20)	Percent of Current Total	% Change	COVID-19 Diagnoses Rate (per 100,000 persons)*
Atlanta	1398	1503	45.8%	7.5%	340.7
South Fulton	365	373	11.4%	2.2%	392.2
Sandy Springs	255	268	8.2%	5.1%	254.2
Roswell	159	170	5.2%	6.9%	180.4
East Point	95	100	3.0%	5.3%	285.9
Johns Creek	98	101	3.1%	3.1%	120.8
Union City	87	97	3.0%	11.5%	462.8
Alpharetta	74	78	2.4%	5.4%	120.6
Milton	55	59	1.8%	7.3%	154.6
Fairburn	44	43	1.3%	-2.3%**	292.4
College Park	30	30	0.9%	0.0%	216.2
Palmetto	14	13	0.4%	-7.1%**	297.3
Hapeville	17	17	0.5%	0.0%	258.3
Mountain Park	<10	<10	0.0%	0.0%	160.0
Unknown	399	426	13.0%	-	-

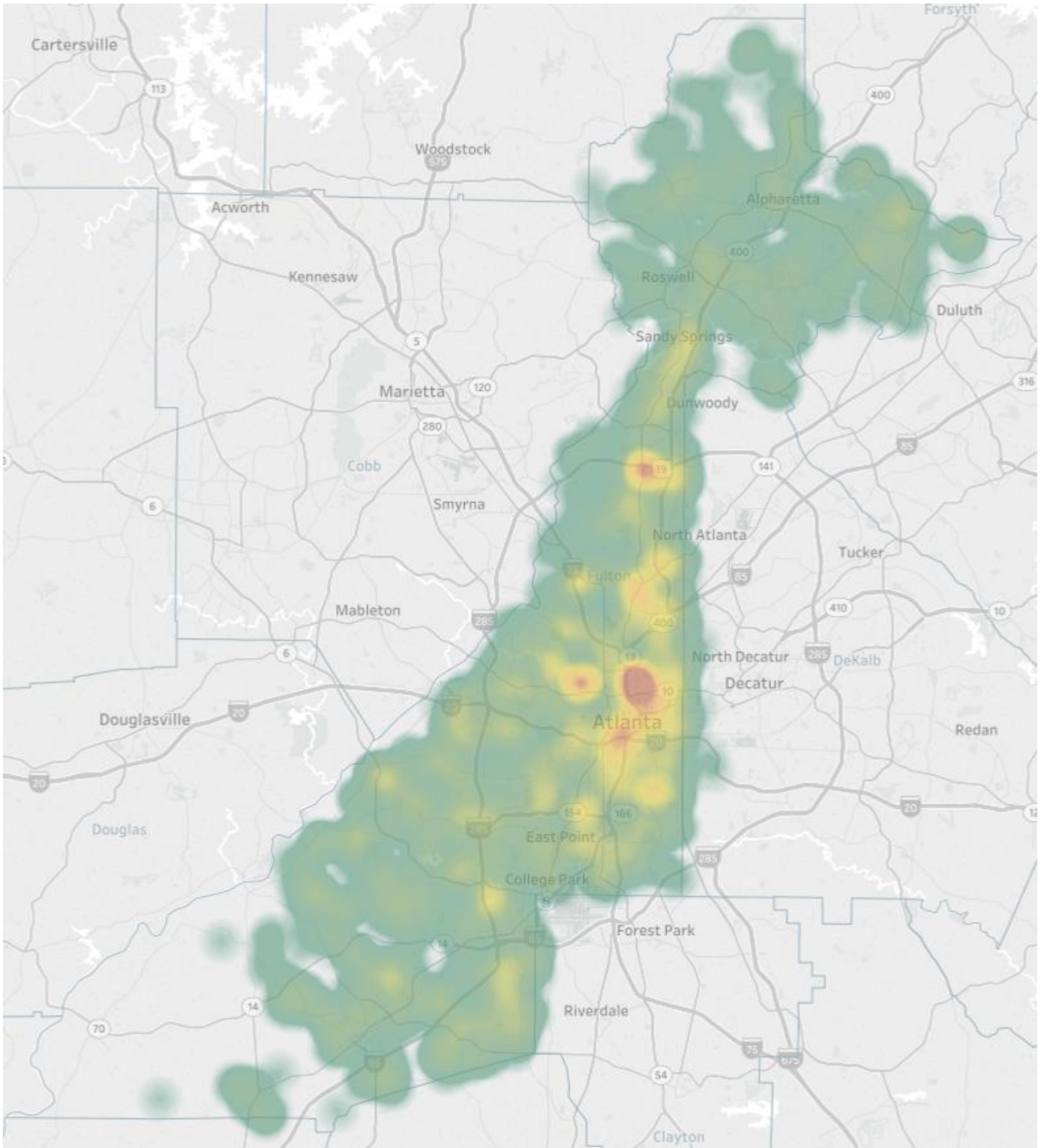
*Population estimates from US Census Bureau used to calculate diagnoses rates. ** Data cleaning (either during detailed data collection that takes place at case interviews or during the geo-coding process) may lead to reassignment of few cases from one territory to another and these may appear as “decreases” when compared to the previous day’s count. These do not reflect errors in the data collection or analysis process but only reflect the minor day-to-day fluctuations in case counts that arise in an evolving public health database like COVID’s.

Figure 3. COVID-19 Diagnoses Rate in Fulton County by City (5/06/20)



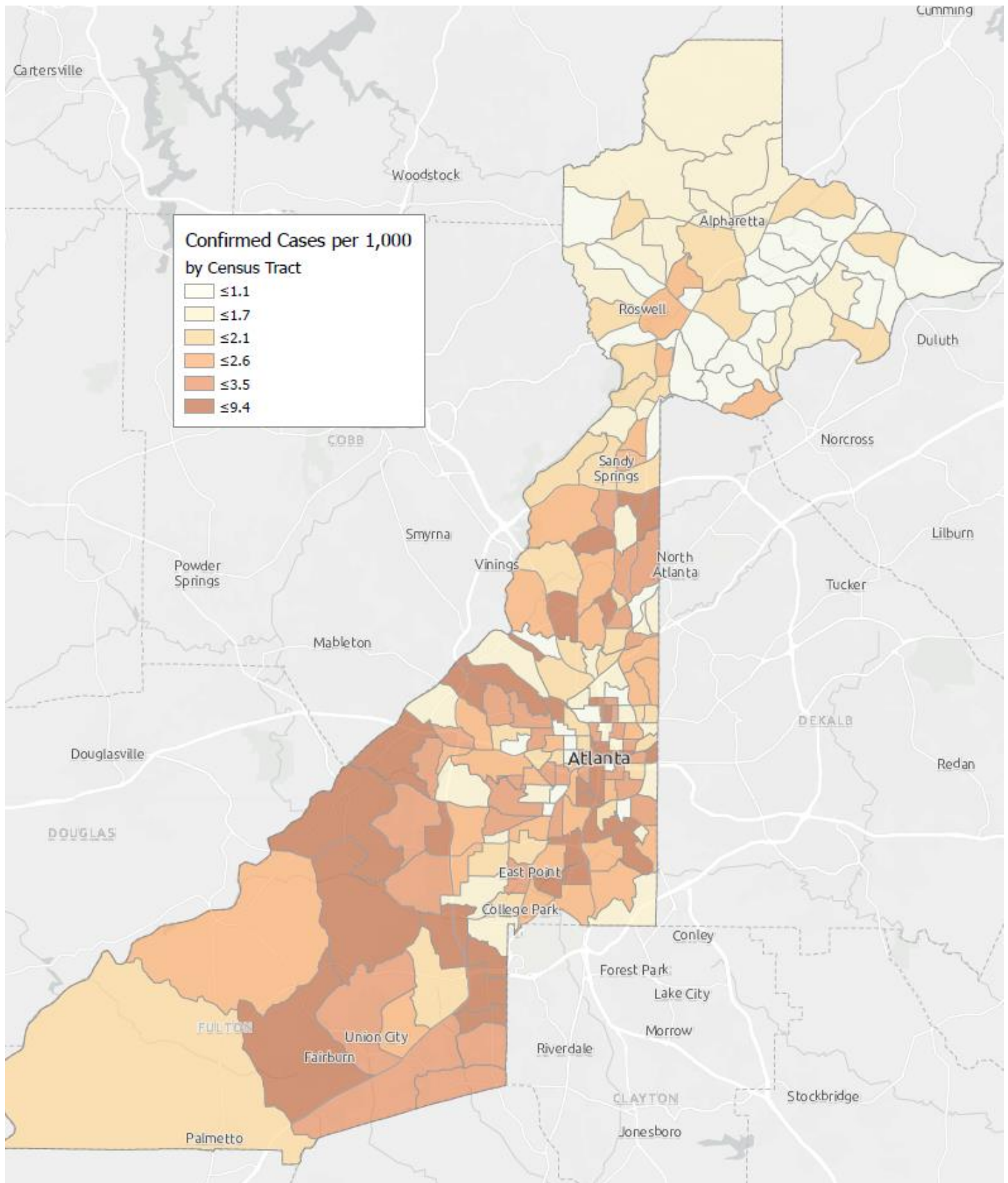
*Rates shown are per 100,000 persons

Figure 4. Density Map of COVID-19 Cases in Fulton County (5/06/20)



NB. Data used excludes the outbreak-related cases diagnosed at long-term care facilities and reflects the current geographical distribution of COVID19 diagnoses in the general Fulton County community.

Figure 5. COVID19 Diagnosis Rates in Fulton County by Census Tract (5/06/2020)



*Rate (per 1000 population)

NB. Data used excludes the outbreak-related cases diagnosed at long-term care facilities and reflects the current geographical distribution of COVID19 diagnoses in

COVID-19 CASE COUNTS BY ZIP CODE

ZIP code	Previous Count (5/04/2020)	Current Count (5/06/20)	Percent of Current Total	% Change
30331	278	280	8.5%	0.7%
30318	172	195	5.9%	13.4%
30349	192	193	5.9%	0.5%
30213	118	123	3.8%	4.2%
30315	104	111	3.4%	6.7%
30344	92	98	3.0%	6.5%
30311	100	102	3.1%	2.0%
30342	140	143	4.4%	2.1%
30314	63	64	2.0%	1.6%
30310	84	93	2.8%	10.7%
30308	67	72	2.2%	7.5%
30022	72	74	2.3%	2.8%
30327	72	77	2.3%	6.9%
30004	73	78	2.4%	6.8%
30309	106	115	3.5%	8.5%
30076	60	63	1.9%	5.0%
30291	114	124	3.8%	8.8%
30350	59	63	1.9%	6.8%
30075	87	95	2.9%	9.2%
30328	68	72	2.2%	5.9%
30316	33	35	1.1%	6.1%
30312	174	189	5.8%	8.6%
30005	40	46	1.4%	15.0%
30305	56	68	2.1%	21.4%
30306	36	38	1.2%	5.6%
30324	48	59	1.8%	22.9%
30337	24	25	0.8%	4.2%
30009	32	33	1.0%	3.1%
30313	28	30	0.9%	7.1%
30326	20	21	0.6%	5.0%
30097	33	34	1.0%	3.0%
30354	32	32	1.0%	0.0%
30303	31	31	0.9%	0.0%
30339	10	12	0.4%	20.0%
30268	18	18	0.5%	0.0%
30307	11	13	0.4%	18.2%
30319	16	19	0.6%	18.8%
30336	10	12	0.4%	20.0%
30296	<10	<10	0.3%	-
30363	<10	<10	0.2%	-
30301	<10	<10	0.1%	-
30345	<10	<10	0.2%	-
31131	<10	<10	0.1%	-
30023	<10	<10	0.1%	-
30080	<10	<10	0.1%	-
30135	<10	<10	0.0%	-

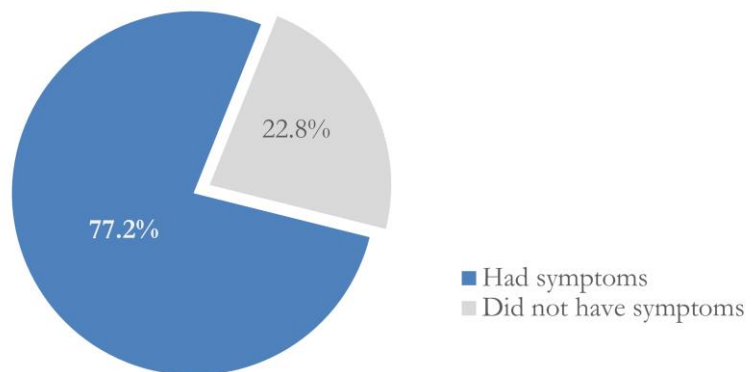
30138	<10	<10	0.0%	-
30139	<10	<10	0.0%	-
30321	<10	<10	0.1%	-
30340	<10	<10	0.2%	-
30341	<10	12	0.4%	-
30358	<10	<10	0.0%	-
30374	18	18	0.5%	0.0%
30606	<10	<10	0.0%	-
31150	<10	<10	0.0%	-
30024	<10	<10	0.0%	-
30098	<10	<10	0.0%	-
30334	<10	<10	0.0%	-
30338	<10	<10	0.1%	-
Unknown	234	258	7.9%	-

** Data cleaning (either during the detailed data collection that takes place at case interviews or during the geo-coding process) may lead to reassignment of few cases from one territory to another and these may appear as “decreases” when compared to the previous day’s count. These do not reflect errors in the data collection or analysis process but only reflect the minor day-to-day fluctuations in case counts that arise in an evolving public health database like COVID’s.

REPORTING SYMPTOMS

People with COVID-19 have reported a wide range of symptoms ranging from mild symptoms to severe illness. Symptoms may appear 2-14 days after exposure to the virus. Symptoms reported include: cough, shortness of breath/difficulty breathing, fever, chills, repeated shaking with chills, muscle pain, headache, sore throat, new loss of taste or smell – Centers for Disease Control and Prevention (CDC) <https://www.cdc.gov/coronavirus/2019-ncov/symptoms-testing/symptoms.html>

Figure 6. Proportion reporting Symptoms in Fulton County (5/06/20)



COVID-19 cases who have been case interviewed or had medical charts reviewed as at 5/06/20 only

HOSPITALIZATIONS AND DEATHS

Figure 7. Hospitalizations, ICU Admissions and Deaths among COVID-19 Diagnoses in Fulton County (5/06/20)

